

ALL CUTOUT DETAILS ARE FACED THEN TOPSTITCHED FOR QUALITY FINISH.

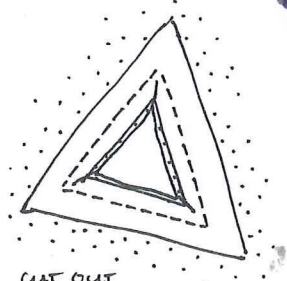
THE DRESS IS DONE UP WITH AN INVISIBLE ZIPPER AT THE SIDE.

A WIDE STRAIGHT BOAT STYLE NECK MIRRORS THE ANGLED CUT OUT DETAILS.

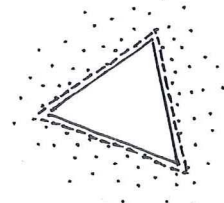
A DROPPED WAIST IS BALANCED BY THE SHORT GATHERED SKIRT.

SHOULDER PADS GIVE THE GEOMETRICAL ANGLED LOOK OF THE BOODICE.

THE SKIRT IS CUT ON THE BIAS TO CONTRAST THE ANGLED LOOK OF THE BOODICE AND CUT OUT WITH THAT OF THE FLOWING SKIRT THAT HITS JUST ABOVE THE KNEE.



CUT OUT DETAIL.



THE DRESS SWINGS OUTWARDS AND IS FASTENED WITH AN INVISIBLE ZIPPER AT THE BACK.

DRESS IS DONE UP WITH AN INVISIBLE ZIPPER AT THE BACK.

A MANDARIN COLLAR ADDS A CONSERVATIVE NATURE TO THE BODY FITTING SHORT DRESS WITH CUT OUT DETAIL AT THE HEM.

THE DRESS FABRIC HAS A LITTLE STRETCH IN ORDER TO ALLOW A TIGHT FIT WITH A SINGLE SIDE BUST DART.

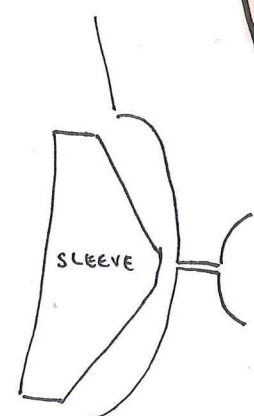
GATHER

SLEEVE PATTERN iv.

THE BOODICE IS FITTED WITH SIDE OF BUST DARTS AND UNDER THE BUST DARTS AND AT THE BACK WITH 2 BACK DARTS.

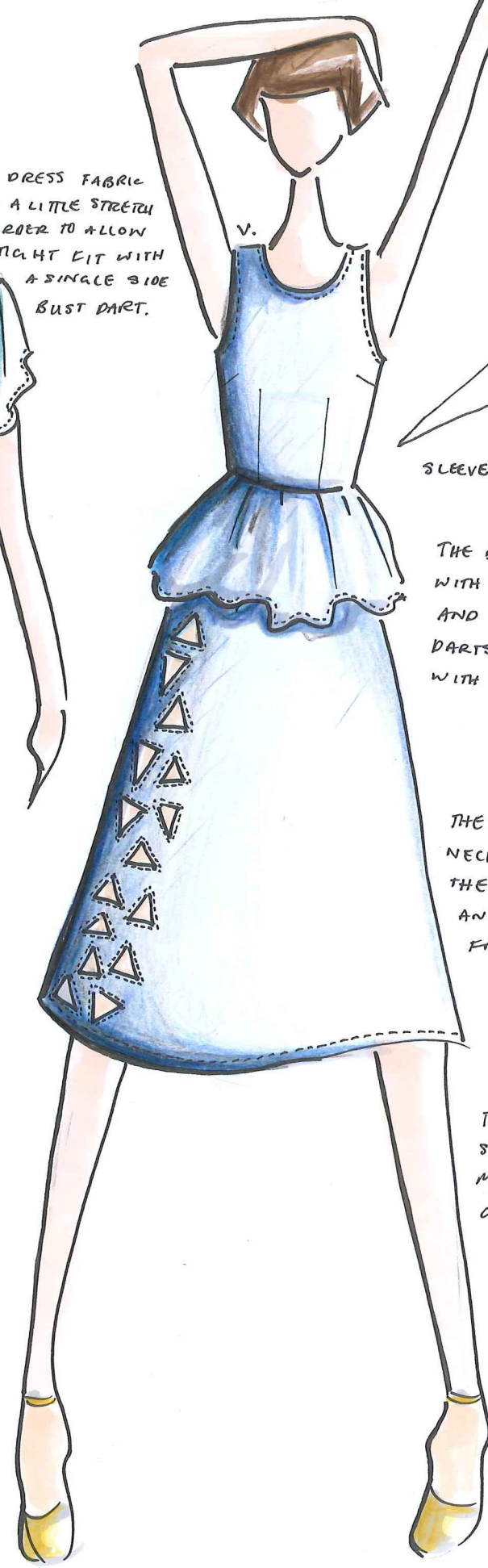
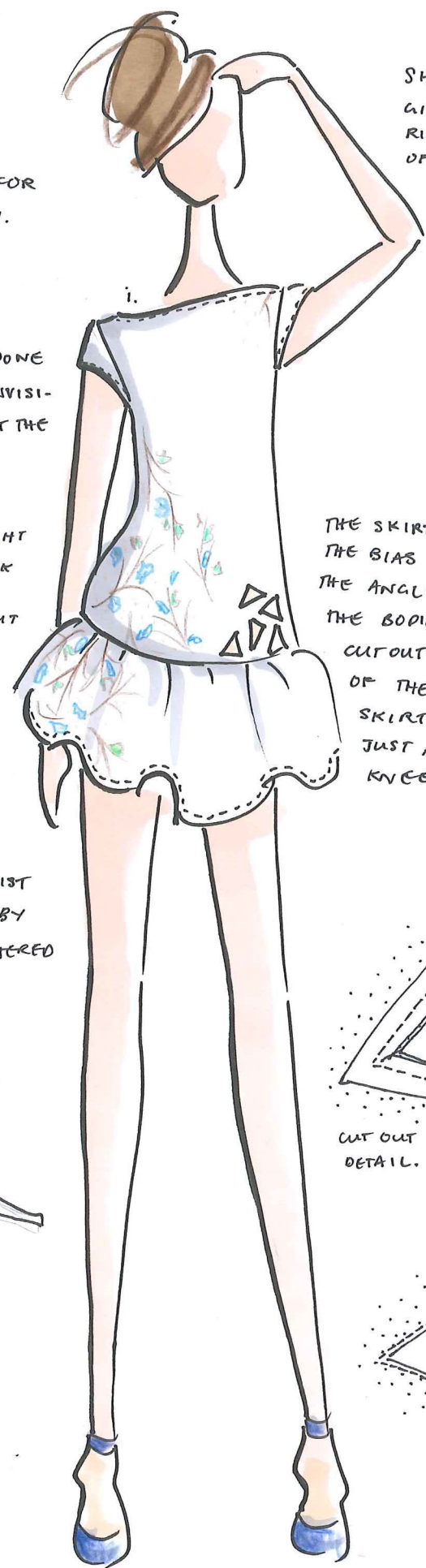
THE SCOOPED/ROUNDED NECKLINES CONTRASTS THE ANGLED CUT OUTS AND MATCHES THE FREE FLOWING PEPLUM.

THE SKIRT HAS A SLIGHT FLARE FOR MOVEMENT IN THE GARMENT.

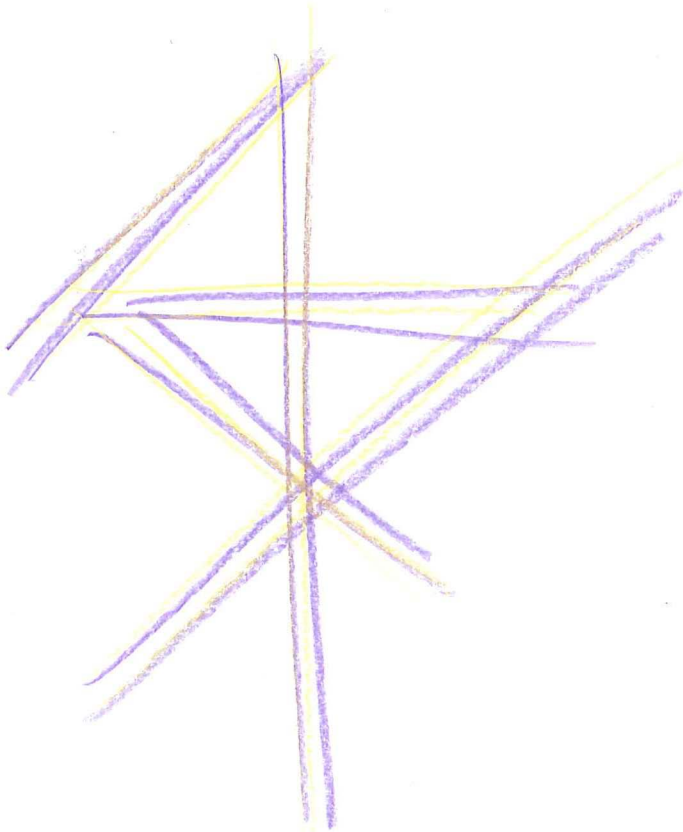


SLEEVE

DRESS







STAND UP MANDARIN COLLAR  
AND BAND PINTUCKED FOR  
EFFECT



INTERFACED CONCEALED BUTTON  
PLACKET FOR STRENGTH



GATHERED AND  
DRAPED TOP

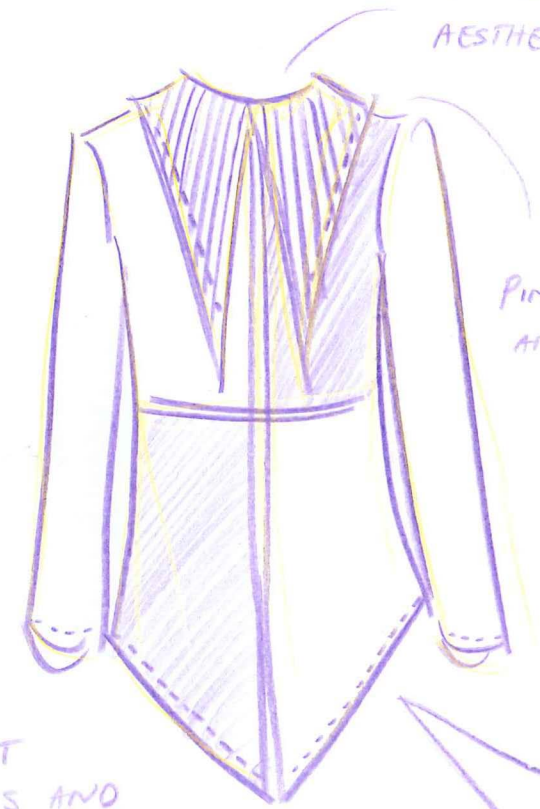


ANGLED PRESS  
HEM



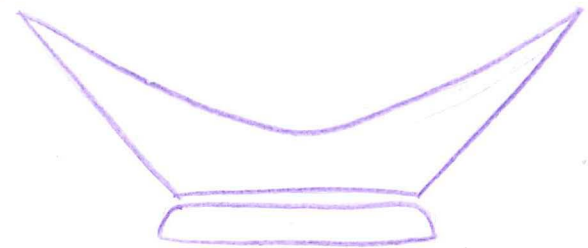
SHOULDER PADS  
ADD STRUCTURE  
AND BODY

BIAS CUT SKIRT  
ADDS FULLNESS AND  
BODY VOLUME



CONCEALED BUTTON PLACKET  
CONTINUES GEOMETRICAL  
AESTHETIC

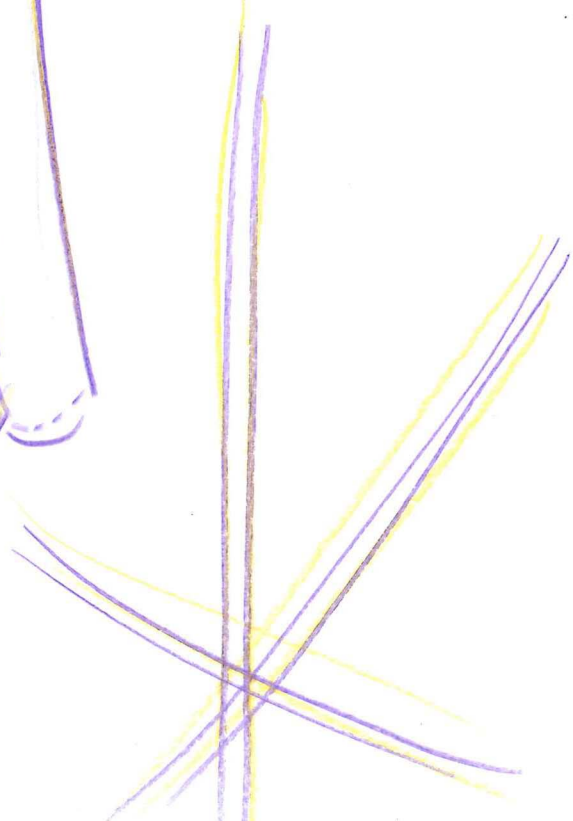
PINTUCKED COLLAR  
AND STAND.



COLLAR AND STAND  
PATTERN



ANGLED SHIRT  
HEM.





SLIGHT BATWING  
SLEEVES

PIPED DETAIL

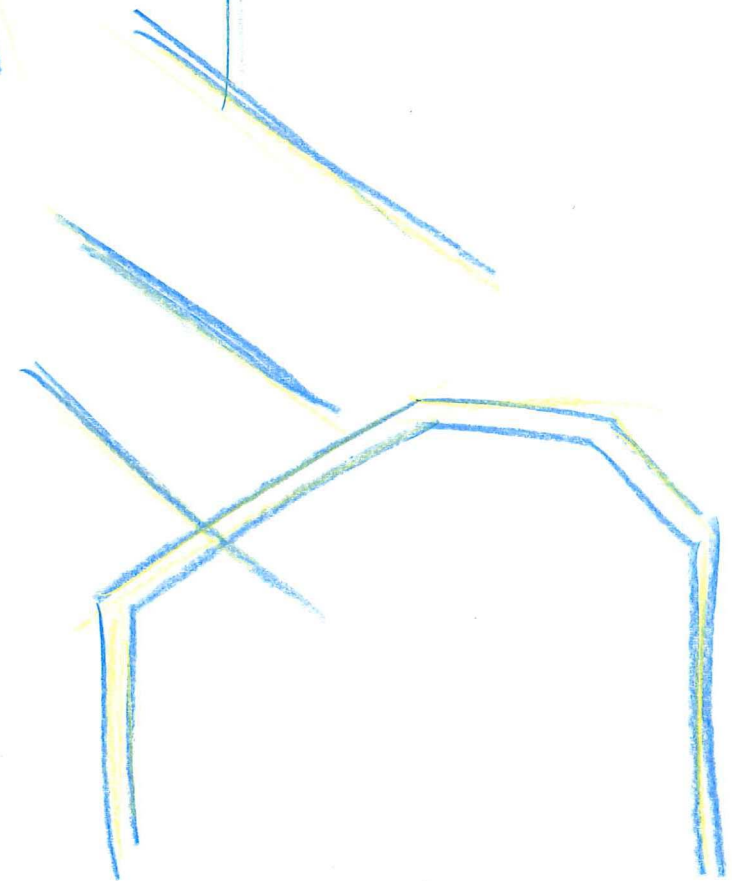
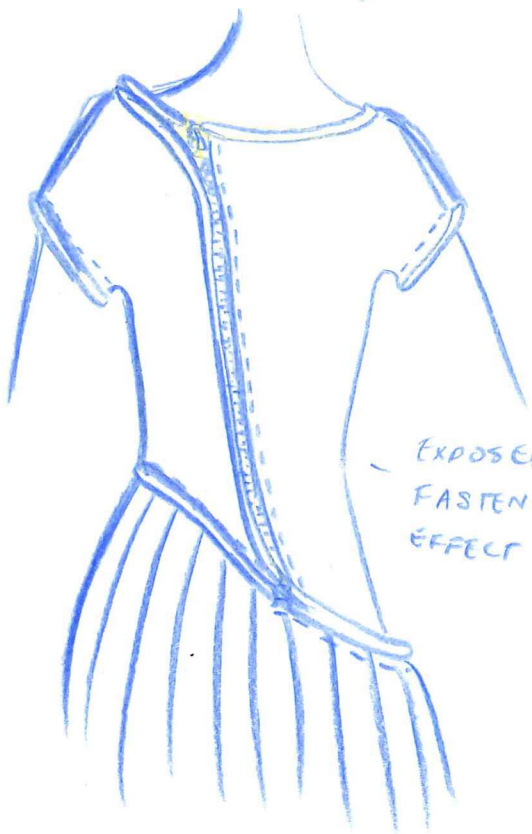
CUT OUT FACED  
AND BOUND FOR  
EFFECT

DRAPED CHIFFON PANEL MATCHES  
DRAPED SLEEVES

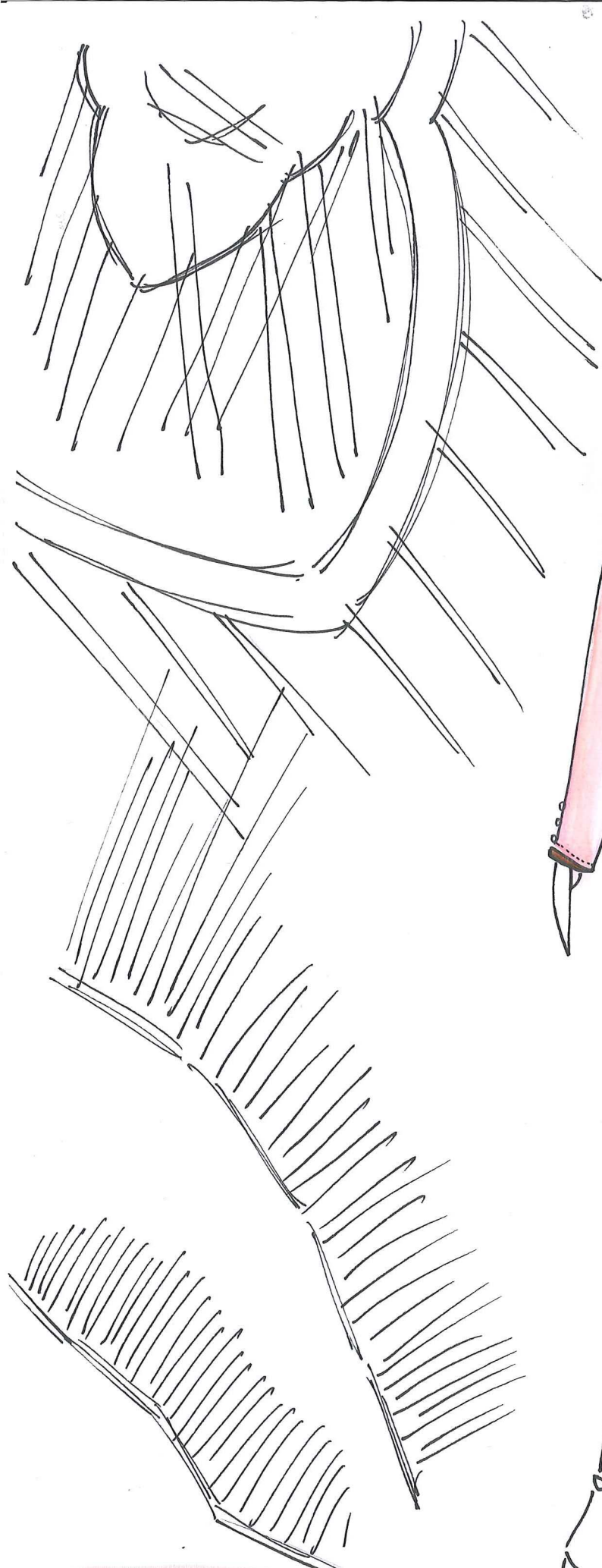
FULL PLEATED  
SKIRT HITS JUST  
BEFORE THE KNEE

DROPPED  
WASTE AND  
SHORT PLEATED  
SKIRT PANEL

EXPOSED ZIPPER  
FASTENING FOR  
EFFECT







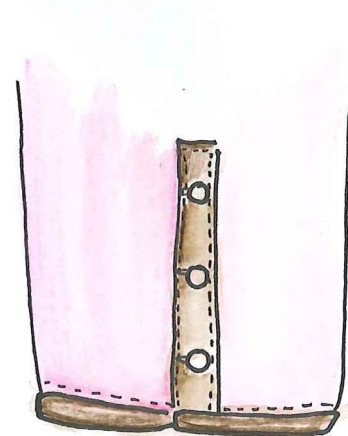
FRONT i.

THE ASYMMETRICAL HEM MOVES FROM THE A LOW WAIST TO BELOW THE HIP.



BACK i.

THE BACK HAS A LACE DESIGN PANEL THAT IS EDGED AT THE BOTTOM WITH BROWN PIPING, A PINK BAND, BROWN PIPING THEN THE PLEATED SHIRT BACK.



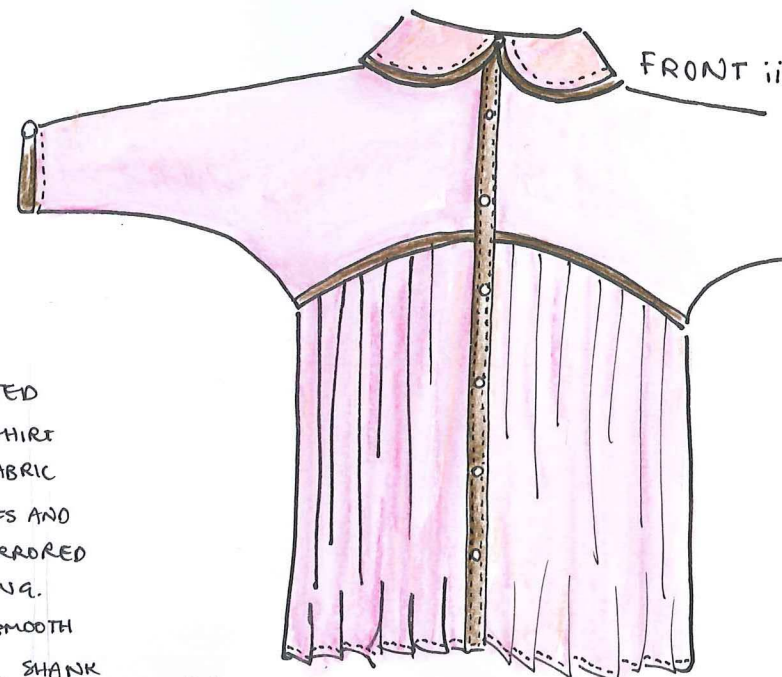
CUFF i.

DESIGN i. HAS LACE YOKE AND ASYMETTRICAL PLEATED BODY AT THE FRONT. THE SLEEVES, COLLAR AND SHIRT BODY ARE CONSTRUCTED IN THE LIGHT PINK FABRIC WHILE THE YOKE IS IN THE BROWN LACE. THE CUFFS AND COLLAR ARE PIPED IN BROWN FABRIC THAT IS MIMICRED IN THE CF. BUTTON BAND AND SLEEVE VENT OPENING. THE SHIRT HAS A FLAT PETER PAN COLLAR AND SMOOTH TAILORED SLEEVES, ALL BUTTONS ARE PEARL SHANK BUTTONS.



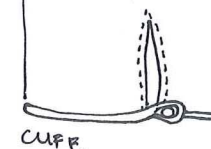
BACK ii.

DESIGN ii. IS A VARIATION OF i. WITH BATWING SLEEVES AND A BABYDOLL STYLE PANEL BEFORE THE PLEATED SECTION. THE BACK HAS A TRIANGULAR LACE PANEL AND AND PEARL BUTTON FASTENING WHERE EVERYTHING MEETS.

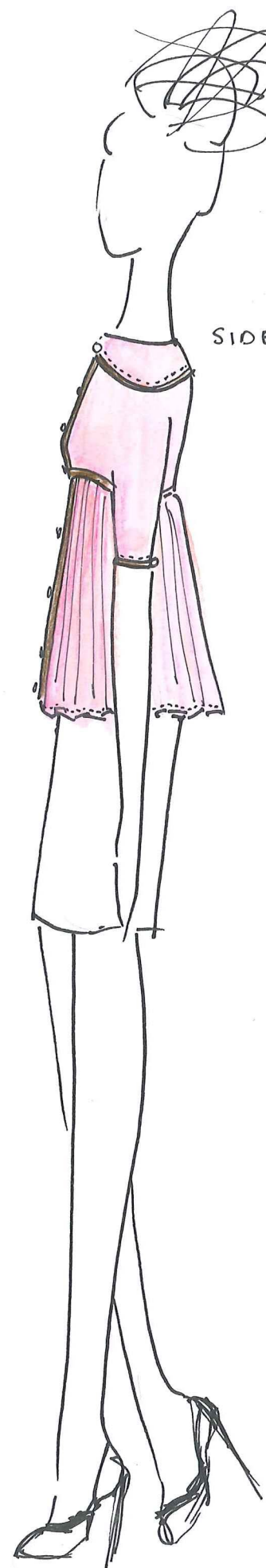


FRONT ii.

THE CUFFS ARE PIPED IN BROWN AND ARE CLOSED WITH A SINGLE PEARL BUTTON AND LOOP.



CUFF.



SIDE ii.

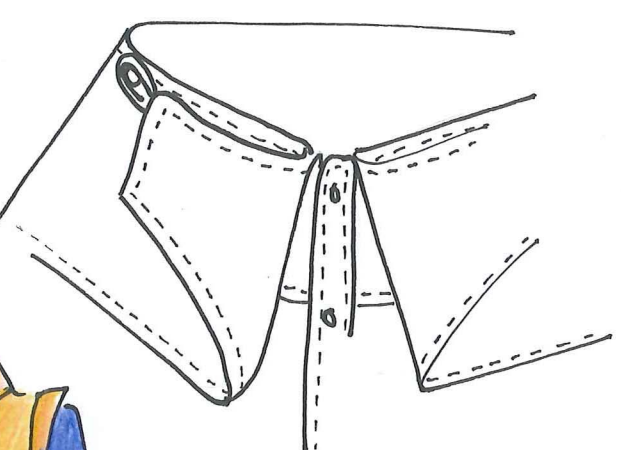
THE SHIRT HAS ELBOW LENGTH SLEEVES PIPED DETAIL AT THE EMPIRE WAIST AND BROWN CONTRAST





FRONT i.

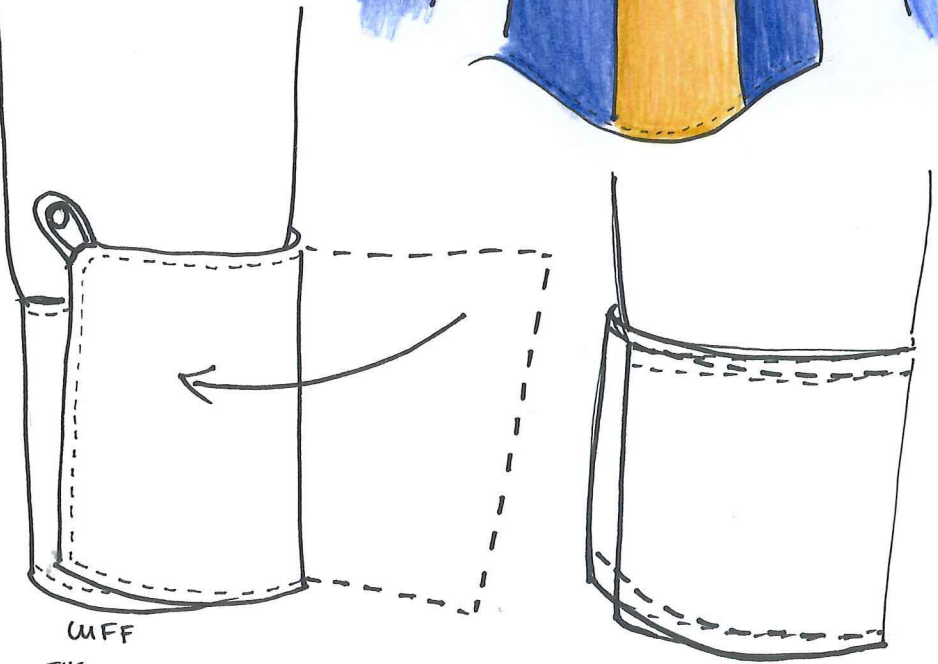
COLLAR



STAND UP SHIRT COLLAR IS DOUBLE SIDED IN BLUE AND BROWN AND IS DESIGNED TO FOLD BACK AND EXPOSE THE BLUE UNDER. THE COLLAR IS HELD BACK WITH A BUTTON AND LOOP.



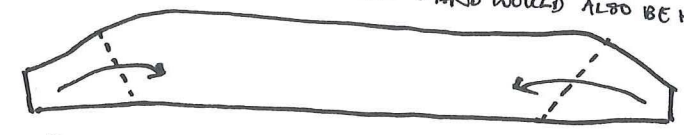
BACK i.



CUFF

THE CUFF (IN BROWN) HAS AN EXTRA ATTACHED PANEL THAT WRAPS AROUND THE FRONT AND FASTENS WITH A BUTTON AND LOOP. THIS TIES IN WITH THE COLLAR AND HAS THE SAME FOLD CONTRAST EFFECT, ATTACHED PANEL IS BLUE.

THE PATTERN FOR THE COLLAR PIECE WITH ARROWS SHOWING WHERE IT WOULD FOLD BACK. COLLAR HAS AN EXAGGERATED SIZE AND THE STAND WOULD ALSO BE HIGHER



COLLAR PIECE

DESIGN i. INCORPORATES A LARGE FOLD BACK COLLAR IN BROWN WITH BLUE UNDEREATH. THE SHIRT HAS PRINCESS SEAMS TO ALLOW A CLOSE FIT AND CONTRASTING BLUE SIDE PANELS, SLEEVES, BUTTON BAND (CF) AND COLLAR UNDER PROVIDE VISUAL INTEREST IN CONTRAST WITH THE RICH GOLDEN BROWN OF THE CENTRE PANELS AND OUTER COLLAR. THE HEMLINE OF THE SHIRT RISES IN THE FRONT AND DIPS AT THE BACK MIRRORING THE CURVED PRINCESS SEAMS AND PROVIDING CONTINUITY IN THE GARMENT.



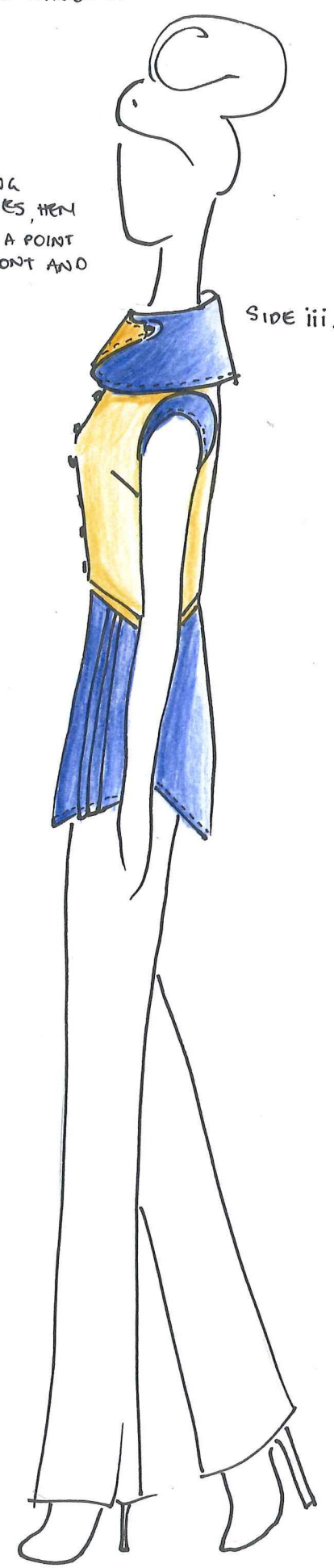
DESIGN iii. HAS A HIGHER LARGER COLLAR IN THE ORIGINAL COLOURS EXCEPT REVERSED. IT NOW HAS A FRONT CUTOUT THAT MELTS INTO THE BUTTON BAND. A DIAGONAL LINED PLEATED PIECE ADDS GEOMETRICAL LINES AND A STRONGER SILHOUETTE.



FRONT iii.

SIMPLE WING CAP SLEEVES, THEN DROPS TO A POINT AT THE FRONT AND BACK.

SIDE iii.



WING SLEEVE CAP

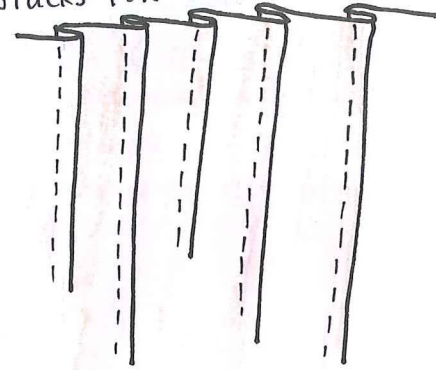
DESIGN ii. SUBSTITUTES A LIGHT DROWN FOR THE DARK BLUE AND MINIMISES THE SLEEVE CAPS WHILE BECOMING MORE STRUCTURAL WITH A SIMPLE COLLAR, ANGULAR PANELS AND UNICOLOUR CUFFS ON 3/4 LENGTH SLEEVES.



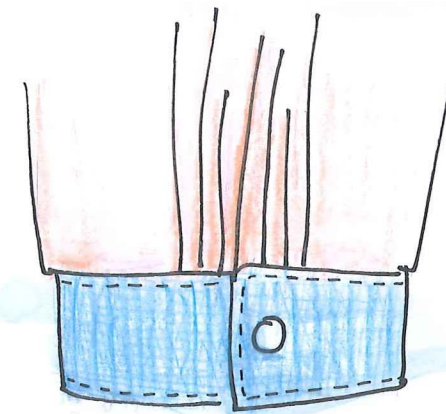
FRONT ii.



PINTUCKS FOR i. AND ii.



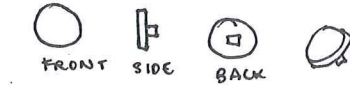
FABRIC IS FIRST PINTUCKED THEN IS CUT FOR PATTERN PIECE AND SEWN.



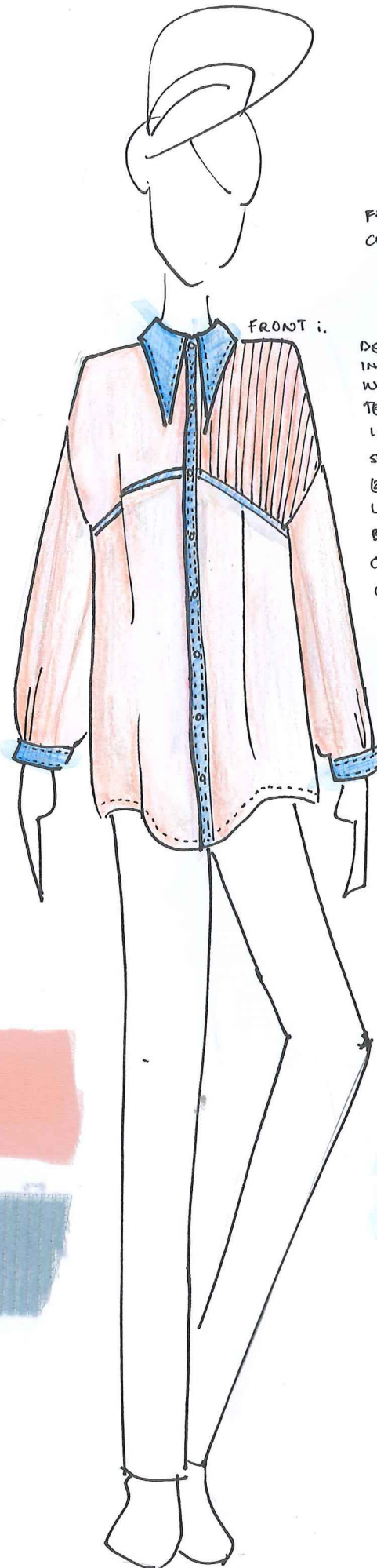
CUFF i. AND ii.

CUFF HAS SEVERAL PLEATS IN THE SLEEVE AND A CONTRASTING CUFF BAND FASTENED WITH A SMALL CREAM SHANK BUTTON.

BUTTON



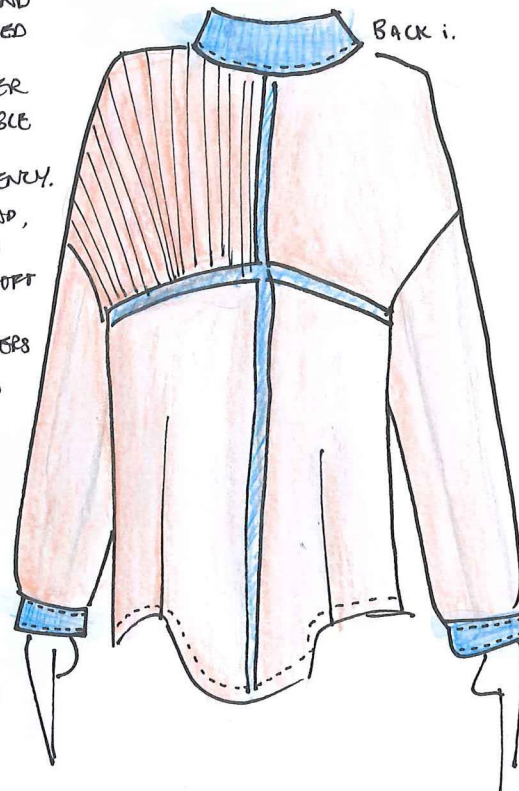
FRONT i.



DESIGN i. IS AN OVERSIZED SHIRT IN A PEACHY/PINK/PLEAS CHIFFON WHICH CREATES IDEAL DRAPE AND TEXTURE. THE CHIFFON IS USED IN A SINGLE LAYER IN THE SLEEVES PROVIDING A SHEER EFFECT WHEREAS IT IS DOUBLE LAYERED AT THE FRONT AND BACK TO DECREASE TRANSLUCENCY. CONTRAST CUFFS, BUTTON BAND, COLLAR, STAND, AND DESIGN LINES ARE DONE IN A SOFT WASHED DENIM. THE SHIRT FEATURES DROPPED SHOULDERS + SLOUCHY SILHOUETTE AND FIT AND A DECORATIVE PINTUCKED PANEL ON THE FRONT AND BACK.

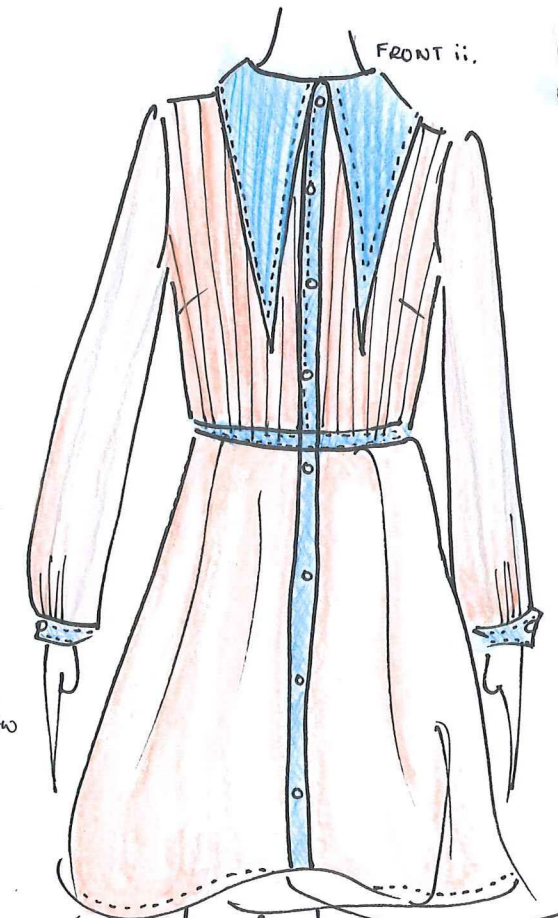
THE COLLAR IS MADE IN DENIM FOR STRUCTURE AND HAS ELONGATED POINTS.

BACK i.

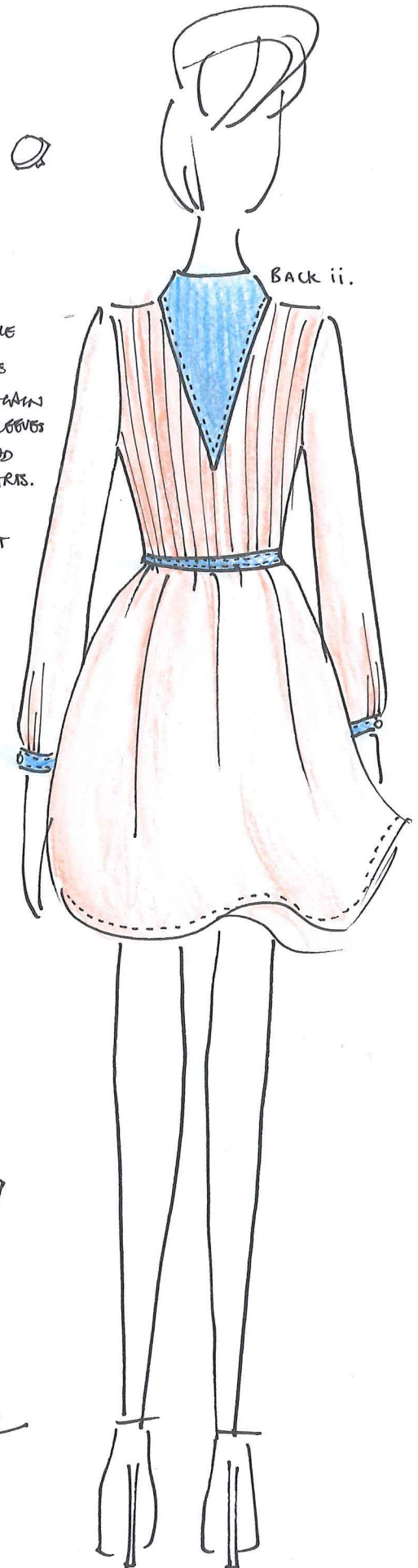


DESIGN ii. IS A VARIATION ON THE SAME CONCEPT WITH A FITTED BODICE WITH THE SAME DECORATIVELY PINTUCKED CHIFFON, AGAIN DOUBLE LAYERED TO DECREASE SHEERNESS. SLEEVES ARE SHEER SINGLE LAYER CHIFFON AGAIN AND THE BODICE IS FITTED WITH SIDE BUST DARS. A CONTRASTING DENIM COLLAR HAS GREATLY LENGTHENED POINTS ~~AT THE FRONT~~ AT THE FRONT (PAST THE BUST) A LENGTHENED POINT AT THE CB. THE CUFFS, CF BUTTON BAND, STAND AND WAIST ARE CONSTRUCTED OF THE SAME LIGHT DENIM.

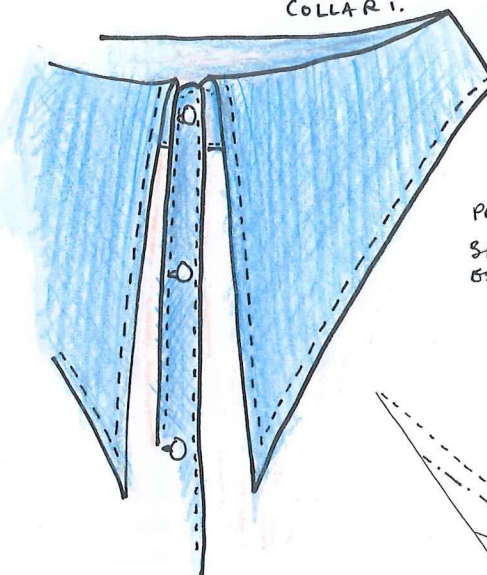
FRONT ii.



BACK ii.

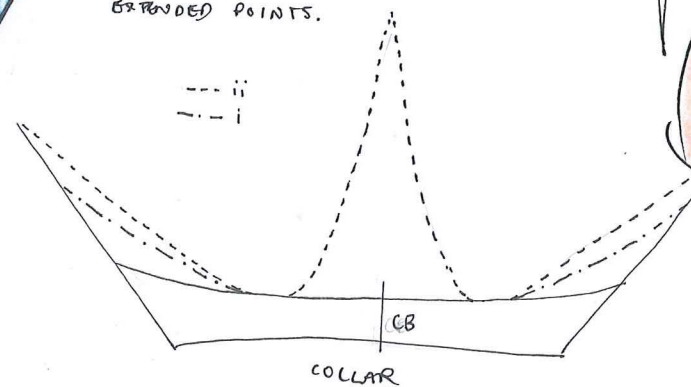


COLLAR i.

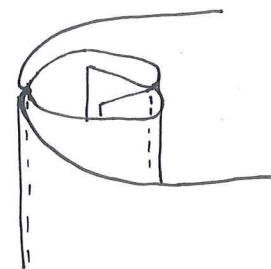


THE SKIRT OF ii. IS DOUBLE LAYERED CHIFFON BUT IS HEMMED SEPARATELY AND JOINED SEPARATELY AT THE SIDES THIS IS TO PROVIDE OPTIMAL MOVEMENT IN THE GARMENT.

PATTERN PIECES FOR COLLARS i. AND ii. SHOWING ORIGINAL PIECE AND THE NEW EXTENDED POINTS.







SEAMS, SHOULDER i.

AS SHEER LACE IS USED ALL SEAMS ARE PARTIALLY VISIBLE INSTEAD OF OVER LOCKING 3 SHOULDERS AND ARMHOLES ARE FRENCH SEAMED LOOKING NEAT AND PREVENTING FRAYING.

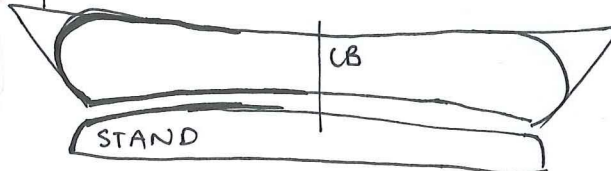
THE CUFFS, COLLAR, BUTTON BAND AND LACE PANEL ARE MADE IN BROWN WHILST THE REST IS IN LIGHT BLUE.



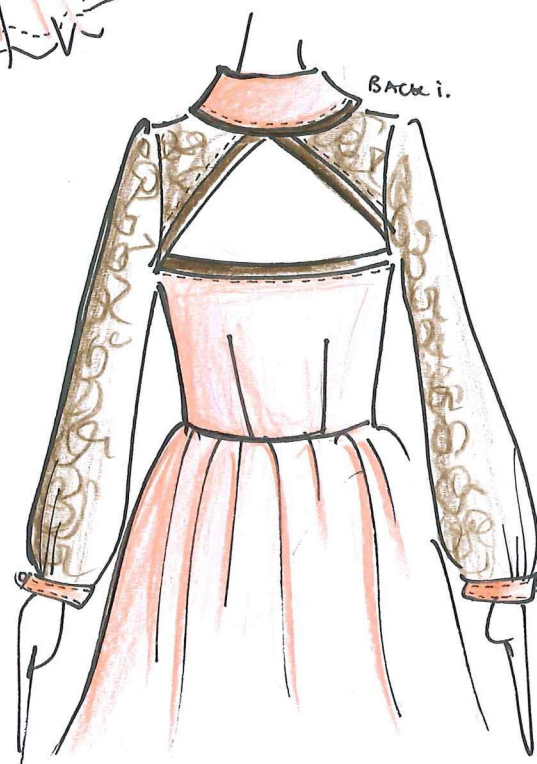
FRONT i.

DESIGN i. HAS A DESIGN THAT HAS EVOLVED FROM A SHORT PEPLUM TO AN ABOVE THE KNEE PLEATED SKIRT AS PART OF A DRESS. IT HAS A PETER PAN STYLE PIPED COLLAR WITH A STAND, A FITTED BODICE WITH BUST DARTS IN PINK CONTRASTS AND COORDINATES WITH THE BROWN LACE YOKE AND SLEEVES. THE OF BUTTON BAND IS A BROWN THE MATCHES THE COLLAR AND BACK CUT OUT PANEL PIRING. THE BACK OF THE DRESS HAS 2 DARTS AND A CUT OUT DETAIL WITH PIPED LACE PANELS.

ORIGINAL SHIRT COLLAR.



STAND



BACK i.

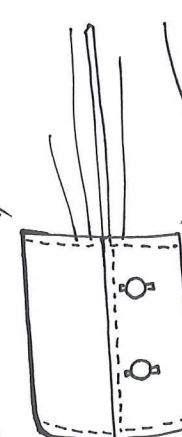
THE CUFFS ON THE SLEEVE ARE MADE IN THE PINK AND ARE CLOSED WITH A SINGLE BUTTON.



FRONT ii.

DESIGN ii. HAS A FITTED

BODICE WITH A DART COMING FROM WAIST AND SIDE, THE OFFCENTRE OPENING ALIGNS WITH THE WIDE BOATNECK FLAT COLLAR WITH ROUNDED COLLAR TIPS. THE BACK HAS A LACE PANEL WITH CURVED LINES REMINISCENT OF THE SHAPE OF THE COLLAR. AN ASYMMETRICAL PLEATED PEPLUM ALSO ALIGNS WITH THE BUTTON BAND BUT BRINGS A MORE STRUCTURAL EDGE TO THE DESIGN.

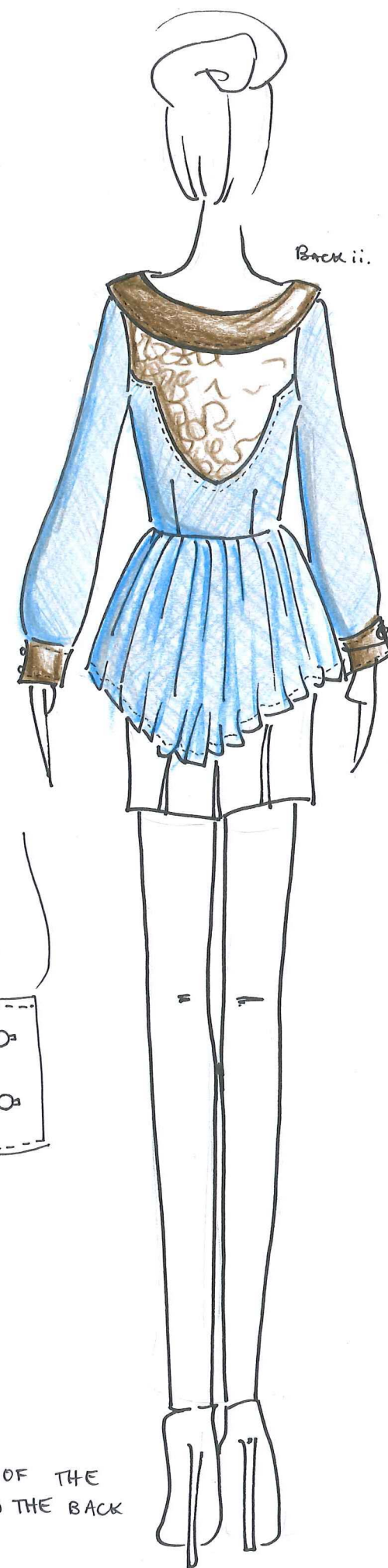


CUFF ii.



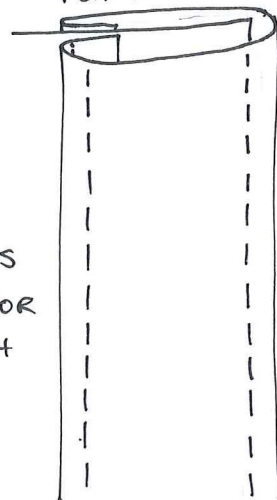
PIPING i.

SEWING DETAIL OF THE PIPING USED ON THE BACK LACE PANELS.



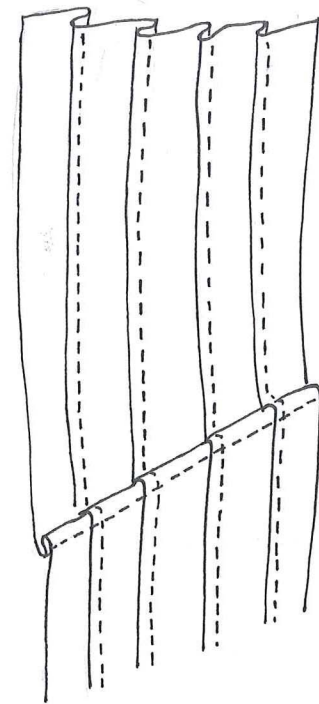
BACK ii.

PLACKET i.

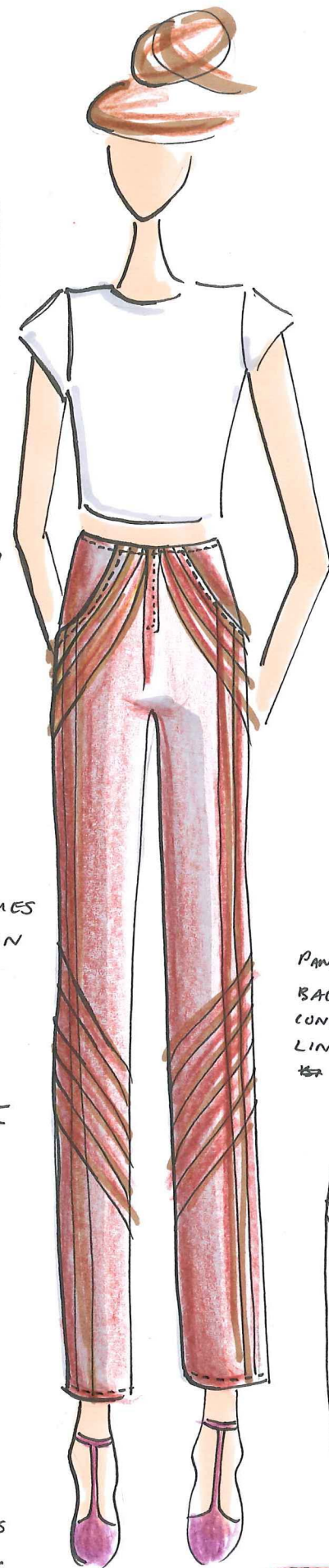


PLACKET IS INTERFACED FOR STABILITY WITH BUTTONS AND STRENGTH.





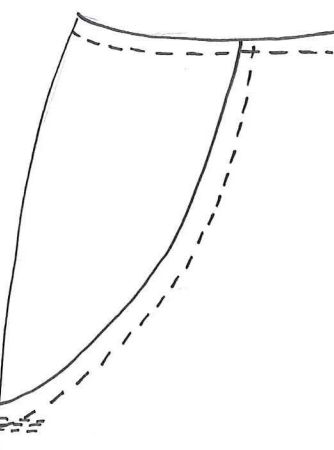
PINTUCK DETAIL.



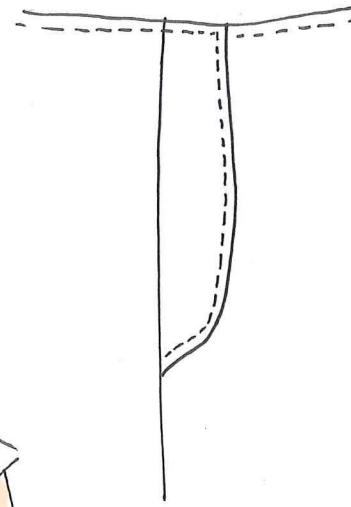
THIS PAIR OF PANTS IS STRAIGHT CUT FROM THE HIPS REACHING DOWN TO THE ANKLES.

PINTUCK DETAIL CREATES THE DESIGN LINES ON THE PANT LEGS.

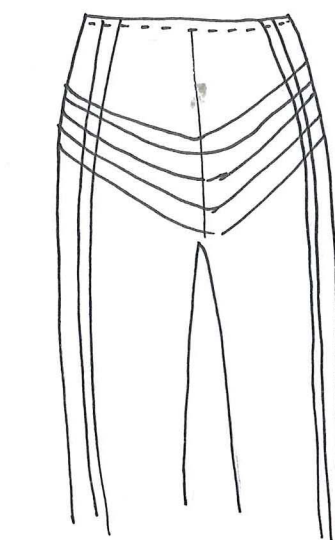
PANTS POCKET CONTINUES THE PINTUCKED DESIGN LINES FOUND ON THE PANT LEGS.



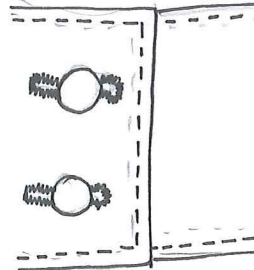
POCKET CLOSEUP. BOTTOM OF POCKET HAS REINFORCING STITCHING FOR STRENGTH.



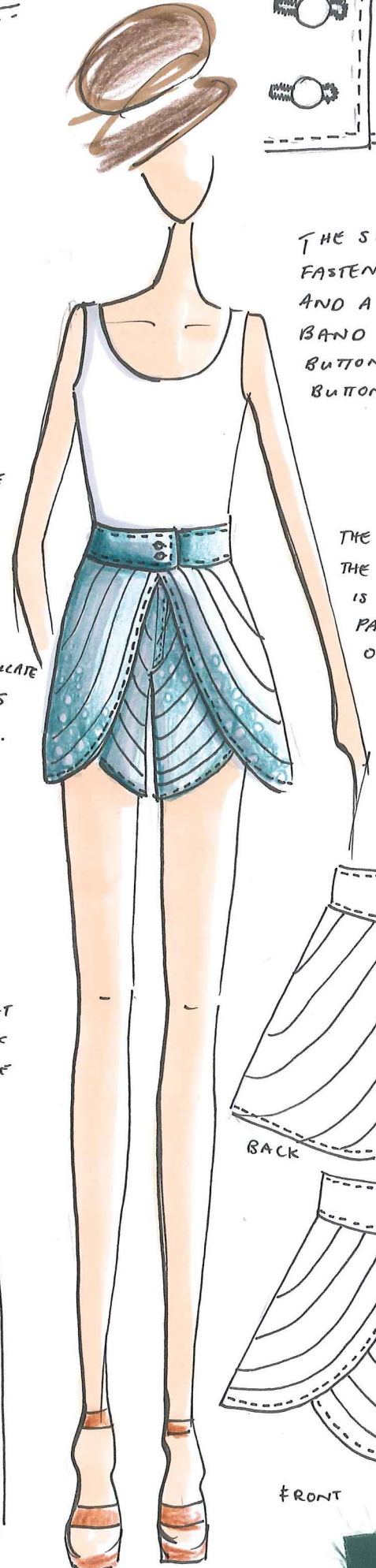
THE SHORTS ARE PLAIN ON THE BACK AND AT THE FRONT HAVE OVERLAPPING RETAIL LIKE PANELS THAT EMULATE THE PANEL LINES OF THE DESIGN.



PANTS ARE FITTED AT THE BACK WITH A YOKE THAT CONTINUES THE PINTUCK LINES FEATURED AT THE FRONT.

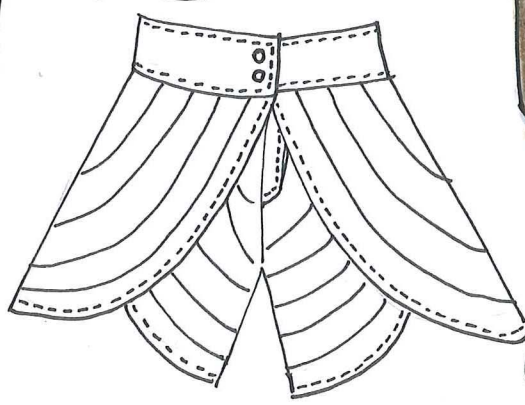
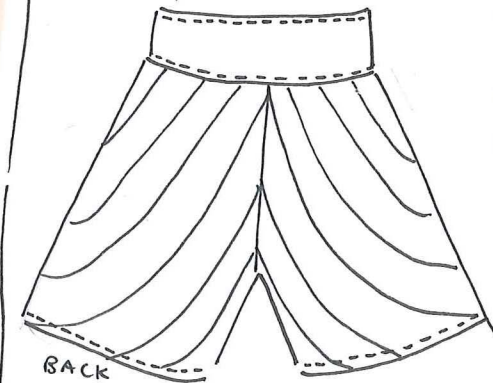


THE SHORTS ARE FASTENED WITH A ZIPPER AND A FLY WITH A WAIST BAND WITH 2 SHANK BUTTONS AND MACHINE BUTTON HOLES.

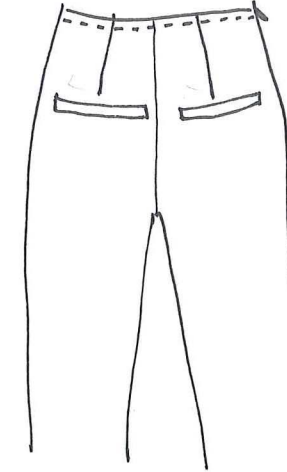
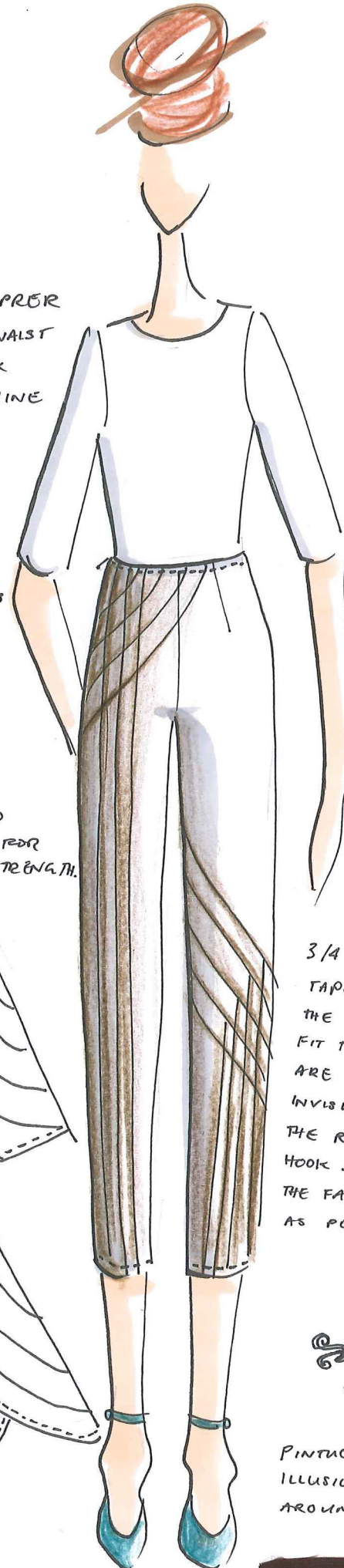


THE EFFECT OF THE FLOWING LINES IS CREATED BY PANELS INSTEAD OF PINTUCKS.

WAIST BAND INTERLACED FOR STABILITY & STRENGTH.



FRONT



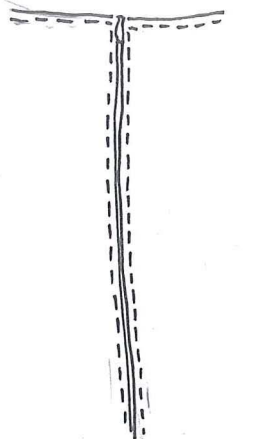
BACK FEATURES 2 WELT POCKETS TO KEEP THE CLEAN LINE AESTHETIC OF THE PANTS.

3/4 LENGTH PANTS TAPERED TO FIT THE LEG. DARTS FIT THE WAIST AND THEY ARE FASTENED WITH AN INVISIBLE ZIPPER ON THE RIGHT SIDE AND A HOOK AND EYE TO CONCEAL THE FASTENING AS MUCH AS POSSIBLE.

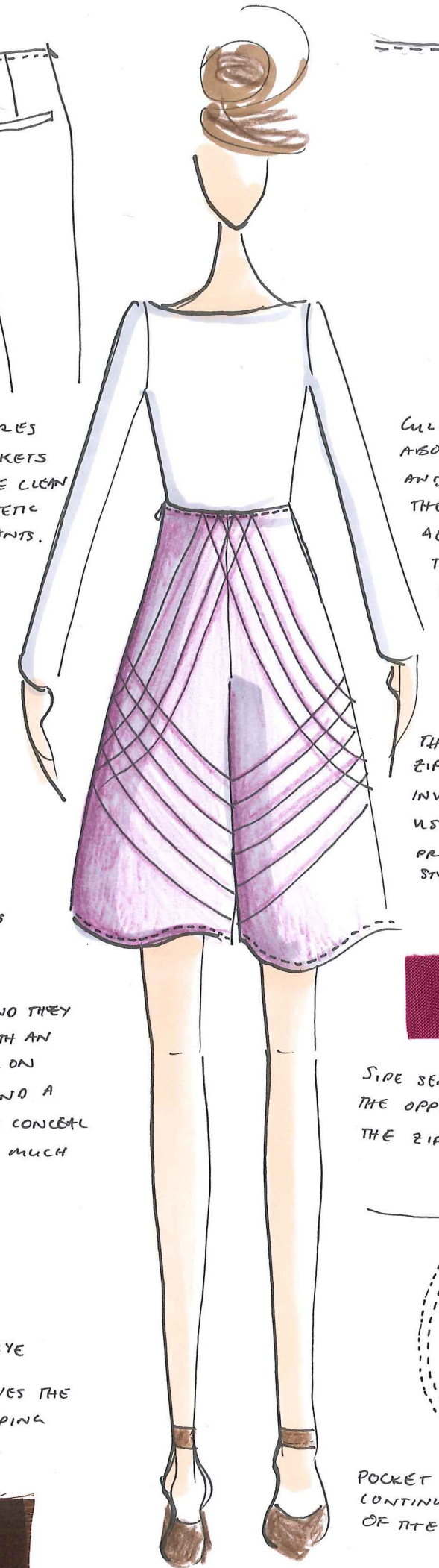


HOOK AND EYE

PINTUCK DETAIL GIVES THE ILLUSION OF WRAPPING AROUND THE LEG.

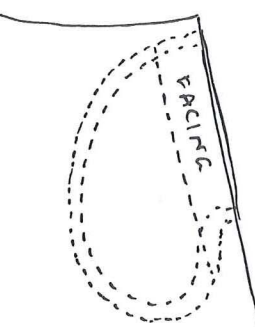


CULOTTES STOP ABOVE THE KNEE AND CONTINUE THE FULL FLOWING AESTHETIC OF THE PINTUCKED LINES.



THE GARMENT IS ZIP FASTENED, AN INVISIBLE ZIP IS USED FOR A PROFESSIONAL AND STYLISH FINISH.

SIDE SEAM POCKET ON THE OPPOSITE SIDE TO THE ZIP.



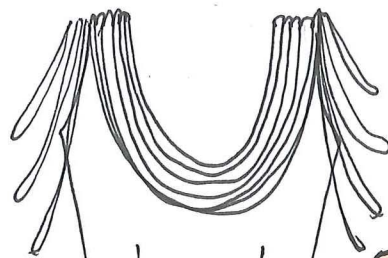
POCKET FACING CONTINUES THE LOOK OF THE OUTER FABRIC.



BACK

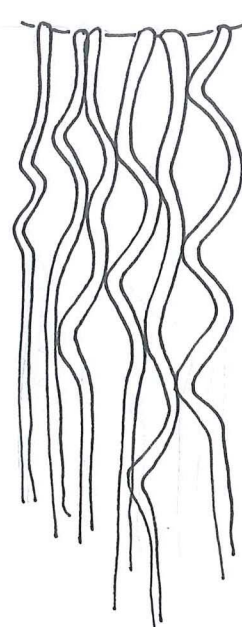


BACK

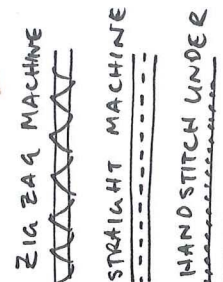


THIS DESIGN HAS  
A SIMPLE A-LINE  
SHAPE ACCENTUATED  
WITH ROULEAU CORD.

CLOSE UP OF CORD DETAIL



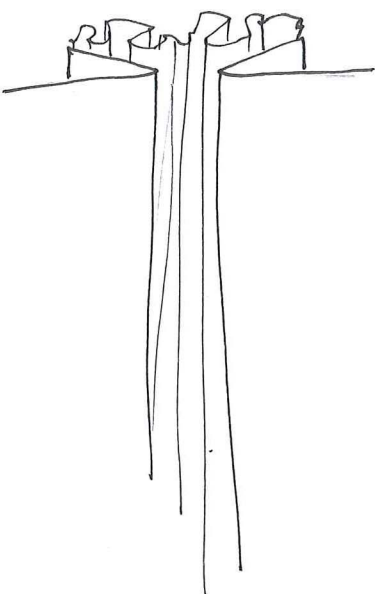
ROULEAU CORD.



ROULEAU CORD STITCH

A TAKE ON THE  
HALTER STYLE NECK  
OF THE FIRST  
DESIGN, NOW WITH  
A CUTOUT DETAIL.

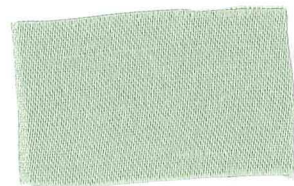
THIS DRESS HAS UTILISED  
CORD WHICH HAS BEEN  
STITCHED ONTO A BACKING  
TO CREATE THE BANDS  
FOR THE HALTER STYLE  
NECK, DECORATED  
FRONT AND  
CROSS OVER BACK.  
IT HAS A CLEAN  
AND SIMPLE  
SILHOUETTE WITH  
AN ADDED GATHERED PANEL  
BETWEEN A BOX PLEAT. THIS  
ADDS MOVEMENT TO THE PIECE  
AND ADDS FULLNESS AND  
BALANCE TO THE SMOOTH  
FITTED BODICE AND SLIGHTLY  
FLARED/A-LINE SKIRT. TO WEAR  
THE DRESS HAS AN INVISIBLE  
ZIPPER AT THE SIDE FOR A  
DISCRETE, CONCEALED OPENING  
TO FIT THE STYLE OF THE DRESS.



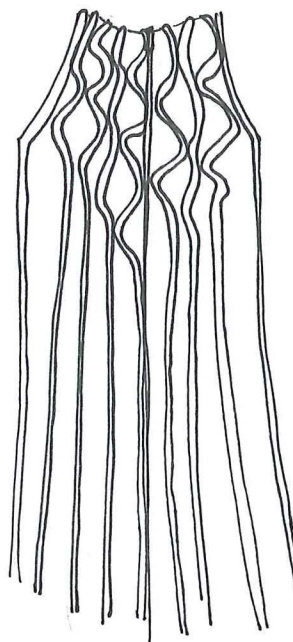
DETAIL OF FRONT GATHERED BOX-PEAT PANEL.

A LONG SCOOPED  
BACK THAT HAS  
CORDED TRIMMING  
CONTRASTS WITH  
THE HIGH NECK  
AT THE FRONT.

IN THIS DRESS  
I HAVE A FITTED  
BODICE AND  
HAVE ADDED  
ADDITIONAL  
CORDING AS  
SLEEVES AS  
REPLACEMENT FOR  
THE FRONT DETAIL.  
THE GATHERED BOX-  
PLEAT PANEL AT  
THE FRONT OF  
THE DRESS HAS  
BEEN MOVED TO  
THE SKIRT FOR INCREASED  
FULLNESS. I REMOVED THE  
DETAIL FROM THE FRONT TO  
BALANCE THE LENGTH OF THE  
DRESS AND HAVE THE TEXTURE  
AT THE BACK COMPLEMENTING  
THAT OF THE PLEATS AT THE  
FRONT.



A RUFFLE AT  
THE BOTTOM  
BALANCES THE  
WAVING CORD  
AT THE TOP AND  
ADDS TEXTURE  
AND VOLUME  
TO A MOSTLY 2D  
PIECE.



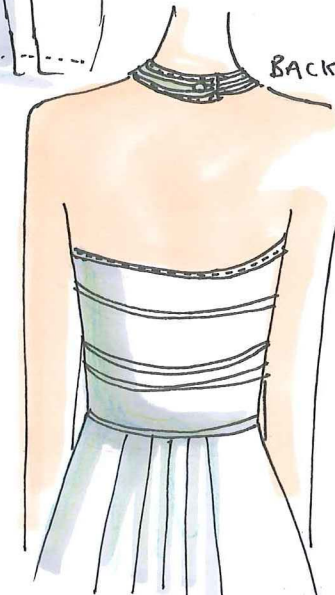
BACK.  
HAS AN INVISIBLE ZIP  
AS NOT TO DISTRACT  
OR CONFUSE FROM  
THE DECORATIVELY CORDED  
DRESS BODY

A LONG LENGTH DRESS  
WITH PLEATS FOR VOLUME  
AND AESTHETIC APPEAL.  
CONTINUES THE LINED  
EFFECT FROM THE  
BODICE CORD DETAIL.

THE BODICE  
FASTENS WITH A  
SIDE INVISIBLE  
ZIPPER AND THE  
HALTER NECK CLOSURE  
WITH A SINGLE SELF FABRIC  
COVERED BUTTON AND  
MACHINE BUTTON HOLE.  
THE CORDING FROM THE FRONT  
CONTINUES TO THE BACK IN  
A SINGLE CONTINUOUS LINE.

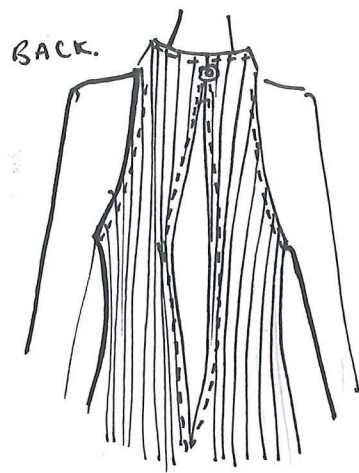
THE BACK HAS 5 CENTRED  
PLEATS DIFFERENT TO THE  
FRONT 5, 3 CENTRE, 1 ON  
EITHER SIDE.

AN ELEGANT  
ELONGATED SILHOUETTE  
SHOWS AND CONTINUES  
THE SPECIAL NATURE  
OF THE ROULEAU  
CORDING.



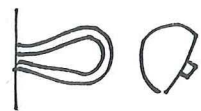
BACK.





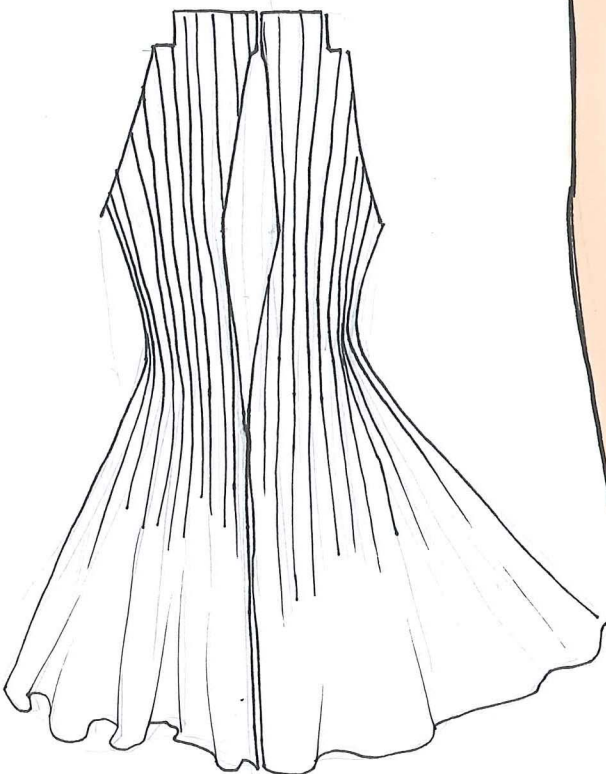
BACK.

THE BACK IS CLOSED WITH A SINGLE BUTTON AND LOOP AND HAS A CUT OUT DETAIL. THE CUT OUT ALLOWS ACCESS IN AND OUT OF THE DRESS.



BUTTON & LOOP.

THE COLLAR, ARMHOLES AND CUT OUT ARE ALL FACED AND REINFORCED TO MAINTAIN THE PLEAT DETAIL AND ADD STRENGTH AND STABILITY.

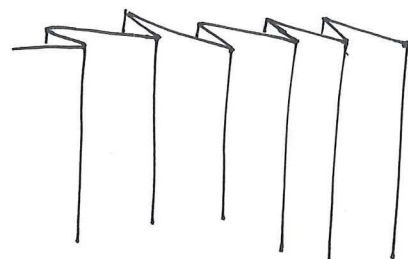


A DIFFERENT TAKE ON THE IDEA OF A HALTER STYLE NECKLINE WITH A SLIGHTLY MANDARIN STYLE COLLAR.

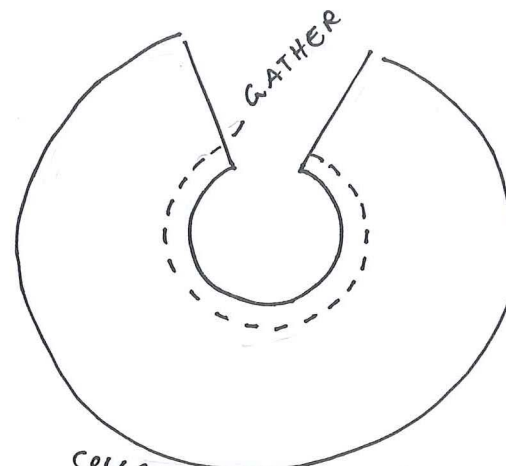
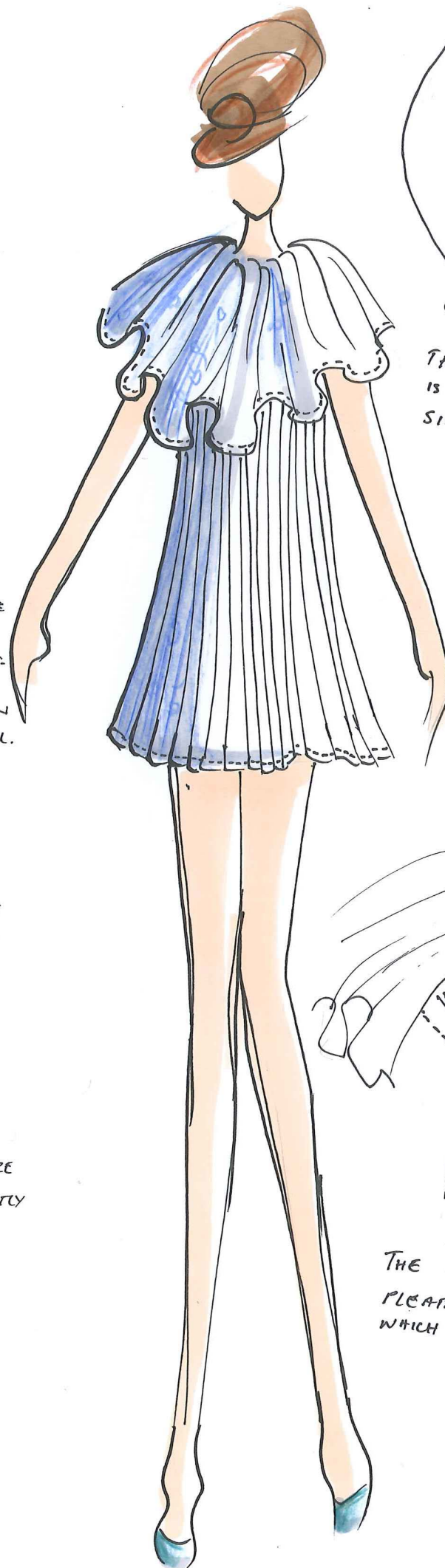
THE HEM OF THE DRESS IS CREATED BEFORE IT IS PLEATED TO ENSURE A SMOOTH CONTINUATION OF THE PLEAT DETAIL.

THE FLOUNCE HAS BEEN MOVED TO THE BOTTOM OF THE DRESS GIVING THE DRESS MORE MOVEMENT.

THE MECHANICAL PLEATS ARE CREATED TO TAPER OFF SLIGHTLY AFTER THE WAIST TO CREATE THE FLOUNCED SKIRT.

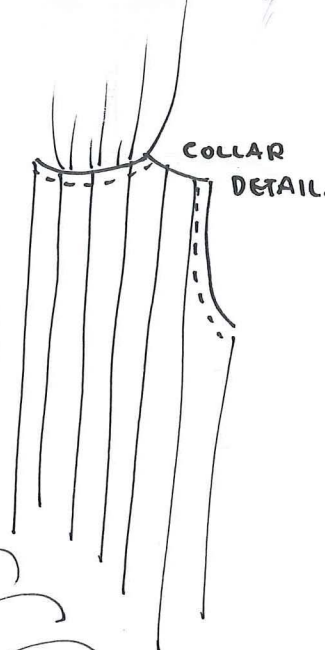


PLEAT DETAIL.

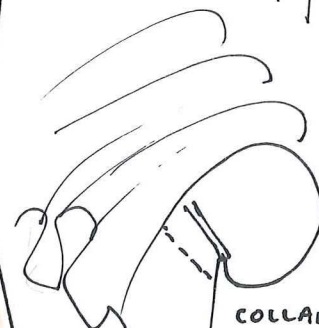


COLLAR PATTERN PIECE.

THE FULLNESS OF THE COLLAR IS BALANCED BY THE SHORT SIMPLISTIC DRESS.

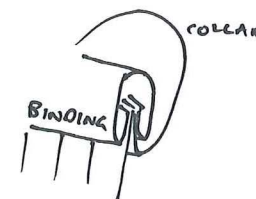


COLLAR DETAIL.



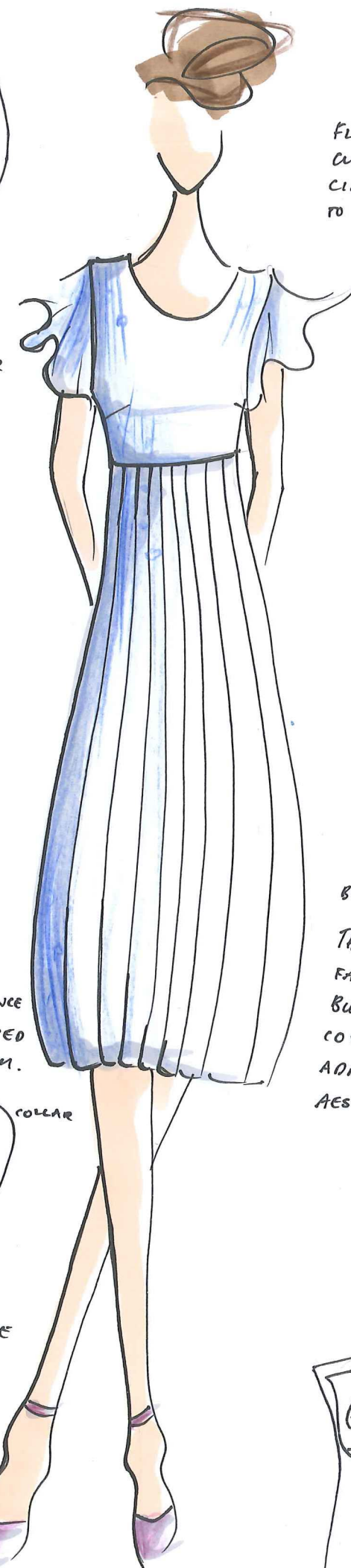
COLLAR SEAM.

THE COLLAR IS BOUND FOR NEATNESS.



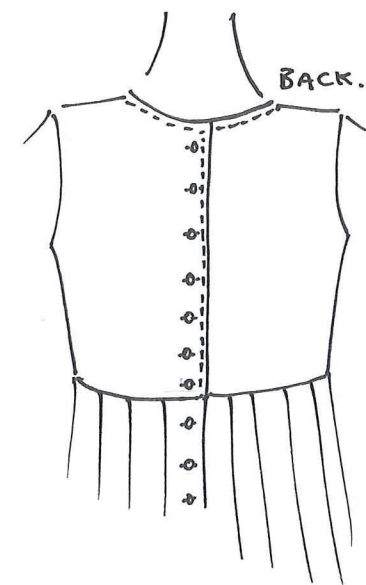
COLLAR BINDING

THE DRESS HAS MECHANICAL PLEATS AND AN ALINE SILHOUETTE WHICH ENDS AT MINI LENGTH.



FLOUNCE SLEEVES ARE CUT ON A FROM A CIRCLE AND ATTACHED TO THE BODICE.

UNDER THE BUST BODICE IS FITTED WITH 2 SIDE OF BUST DARTS.

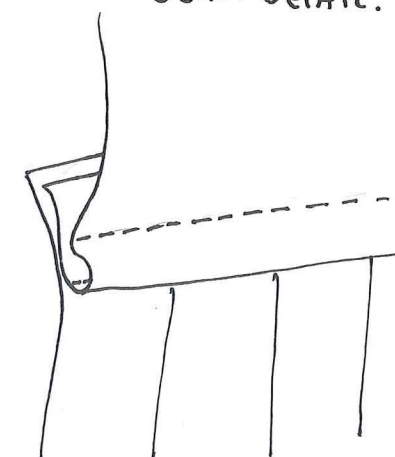


BACK.

BACK OF DRESS

THE BACK OF THE DRESS IS FASTENED WITH MACHINE BUTTON HOLES AND FABRIC COVERED BUTTONS. THIS ADDS DECORATIVE AND AESTHETIC APPEAL.

SEAM DETAIL.

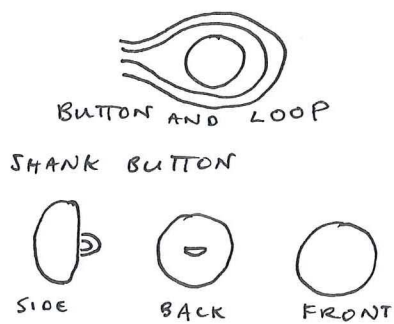




THE NECKLINE IS FACED AND TOPSTITCHED FOR STABILITY AND SECURITY. THE CORD DETAIL WON'T MOVE OR WARP THE FABRIC.

RAGLAN SLEEVE WITH FRONT CORDED PANEL FOR AESTHETIC, TEXTURE AND PATTERN ON AN OTHERWISE PLAIN FABRIC.

THE SKIRT IS CUT ON THE BIAS FOR A FITTED UNDER THE BUST SILHOUETTE WITH A FULL FLOWING SKIRT THAT HITS JUST ABOVE THE KNEE.



BUTTON AND LOOP IS REINFORCED STITCHED TO PREVENT RIPPING AS A RESULT OF EXCESSIVE USE.



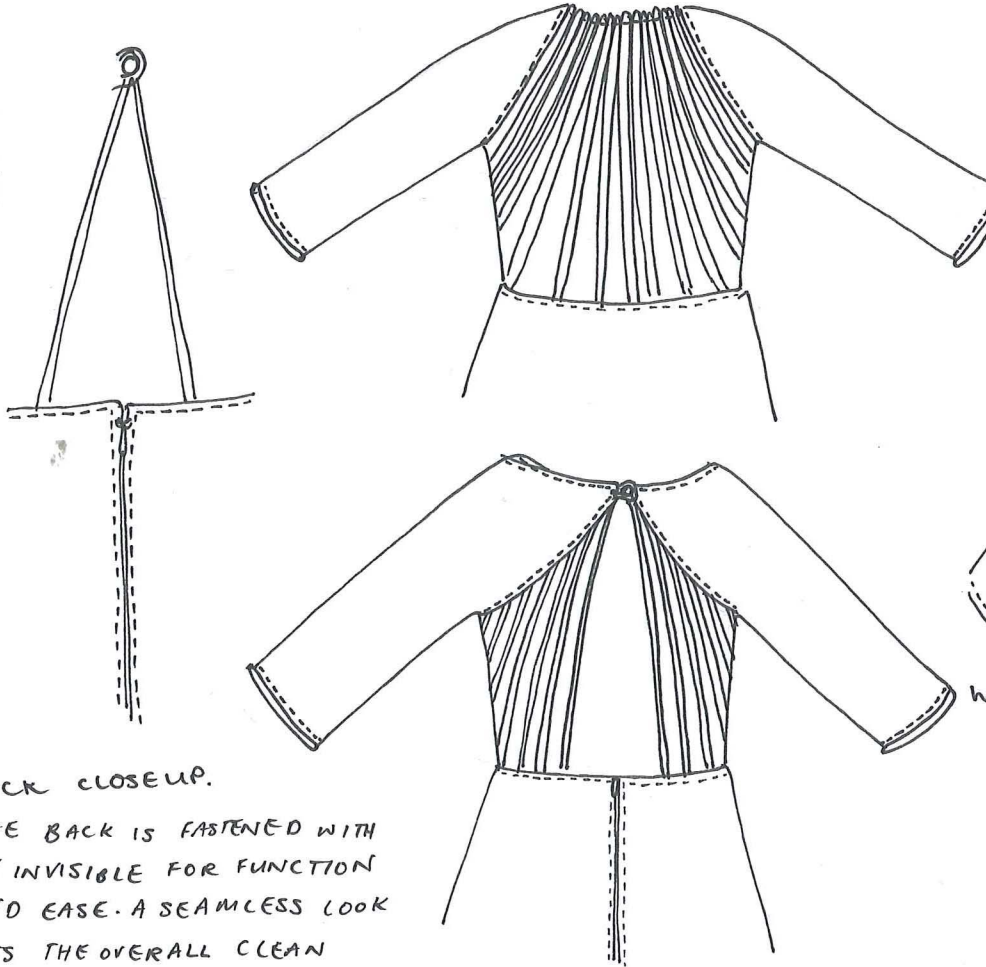
BACK. A CORDED BACK WITH TRIANGULAR CUTOUT IS FASTENED AT THE BACK OF THE NECK WITH A PEARL BUTTON AND CORD LOOP.

ROULEAU CORD

THE HIGHLY DETAILED BODICE IS BALANCED BY THE SIMPLE BIAS CUT SKIRT.



THE SLEEVES ARE EDGED WITH CORD TO BRING CONTINUITY INTO THE DRESS.



BACK CLOSEUP. THE BACK IS FASTENED WITH AN INVISIBLE FOR FUNCTION AND EASE. A SEAMLESS LOOK FITS THE OVERALL CLEAN AESTHETIC OF THE DRESS.

CAP SLEEVE PATTERN

DRESS DIPS AT BACK TO EXHIBIT CORDED DETAIL AND CONTINUE THE FLOW OF THE DESIGN.



BACK. THE BACK OF THE DRESS CONTINGUES THE CORDING FROM THE FRONT AND IS THE FOCAL POINT OF THE DRESS.

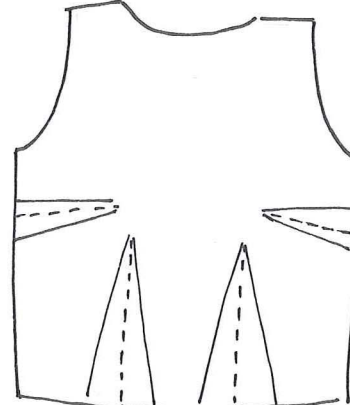


WORKING DRAWING.

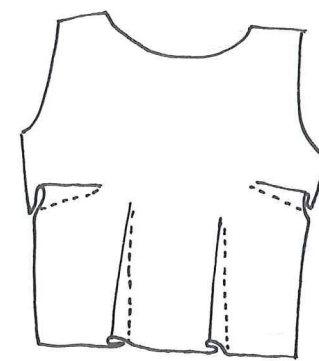
THE BODICE HAS TWO DARTS AT THE FRONT TO FIT THE BODICE AND ACCENTUATE THE FULLNESS OF THE SKIRT.

CORDED COLLAR IS INTERFACED FOR STRENGTH DUE TO THE STRAIN DUE AS A RESULT OF THE CORD STITCHING.

CAP SLEEVES ADD TO THE SHORT FUN VIBE OF THE DRESS.

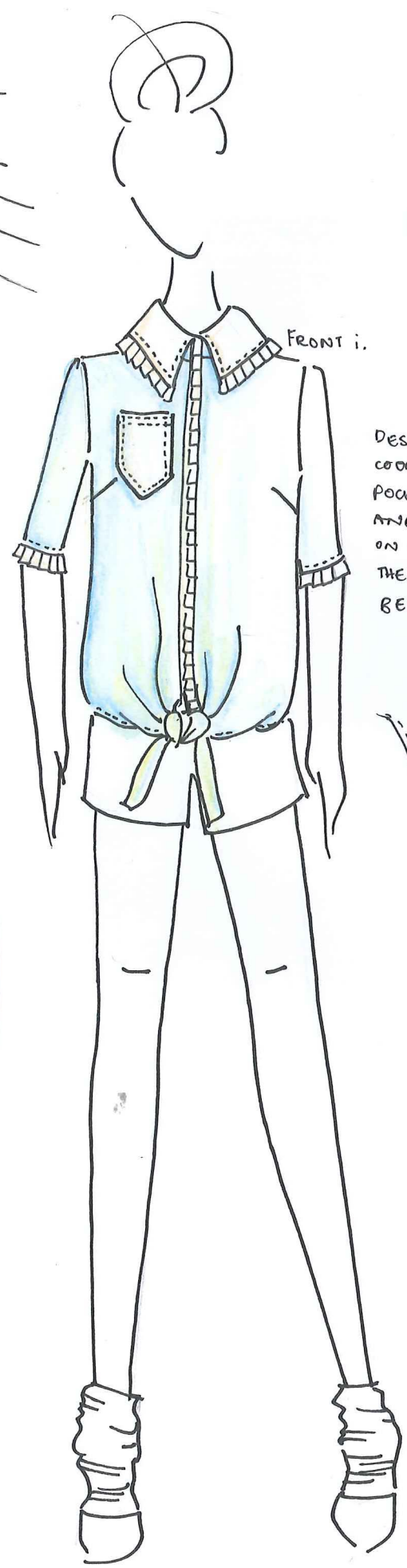
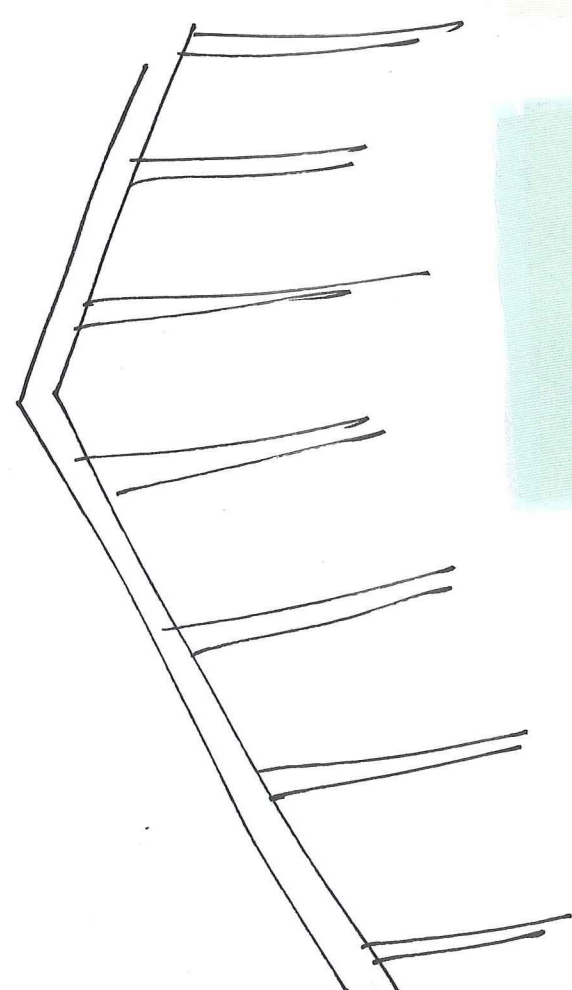
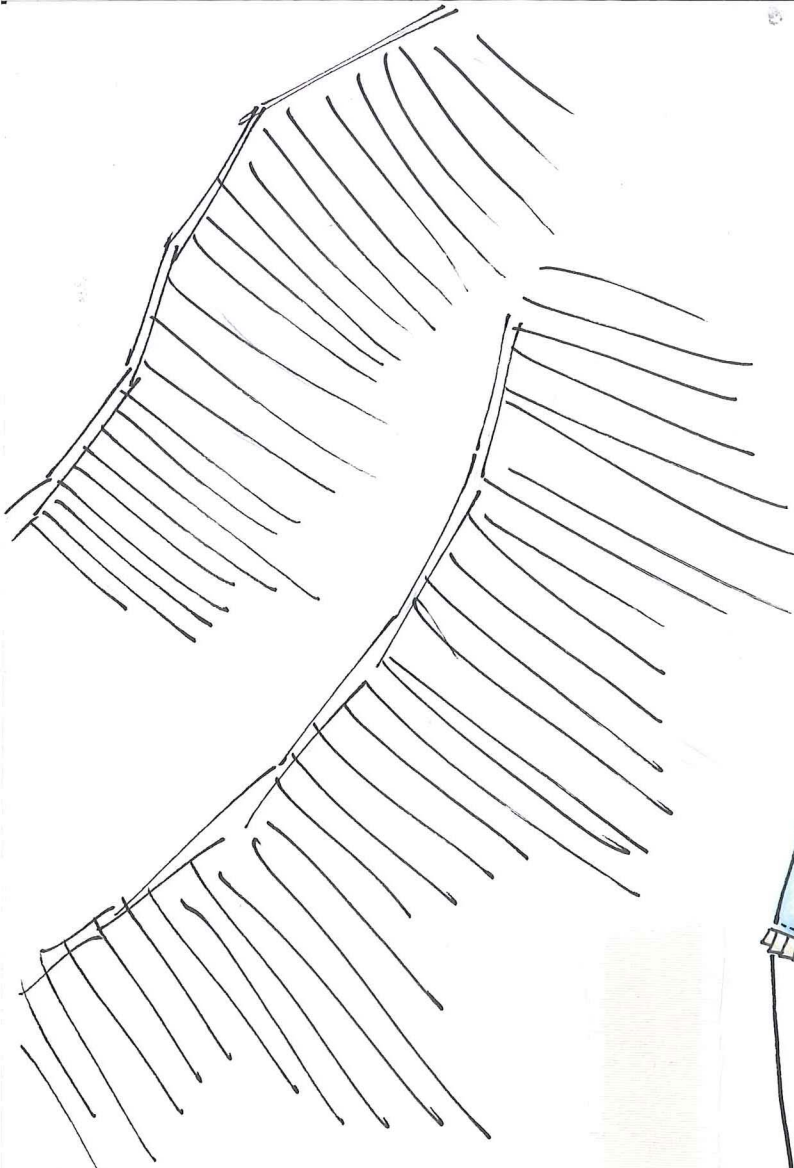


PATTERN BODICE FRONT



BODICE FRONT DARTS

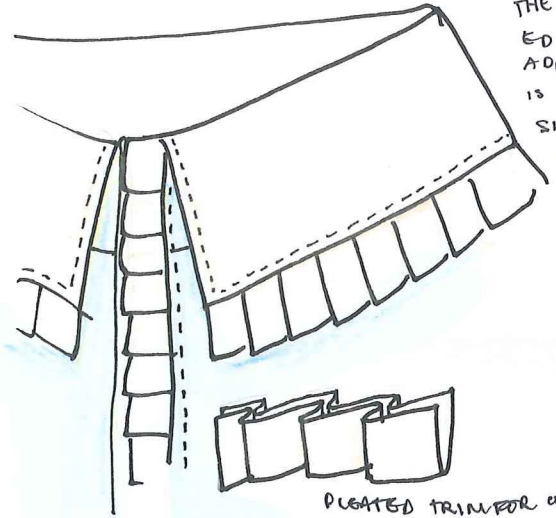




FRONT i.

DESIGN i. IS A SHIRT IN A TURQUOISE SILK WITH CONTRAST/ COORDINATING LIGHT CREAM/PEARL TRIM, COLLAR AND POCKET. THE SHIRT IS SEMI-FITTED WITH SIDE BUST DARTS AND 3/4 LENGTH SLEEVES. IT FEATURES A CREAM POCKET ON THE RIGHT AND A PLEATED CF BUTTON BAND COVER ON THE BOTTOM OF THE SHIRT HAS ELONGATED ENDS TO BE TIED IN A KNOT.

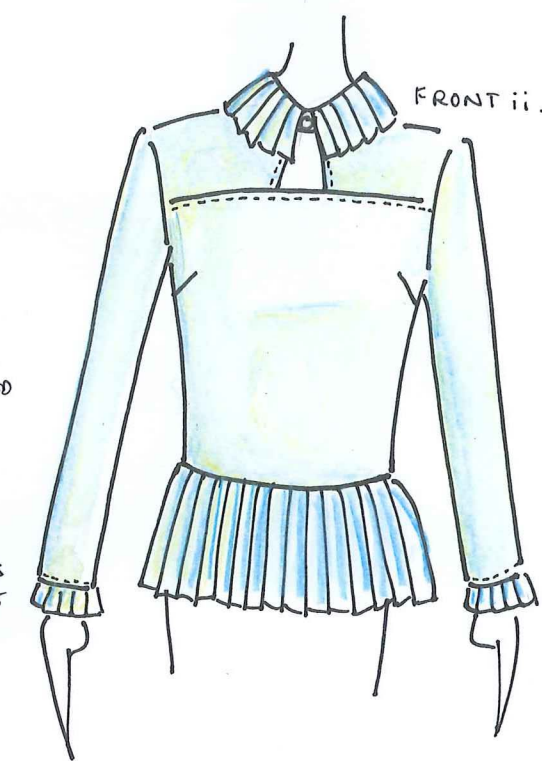
COLLAR i.



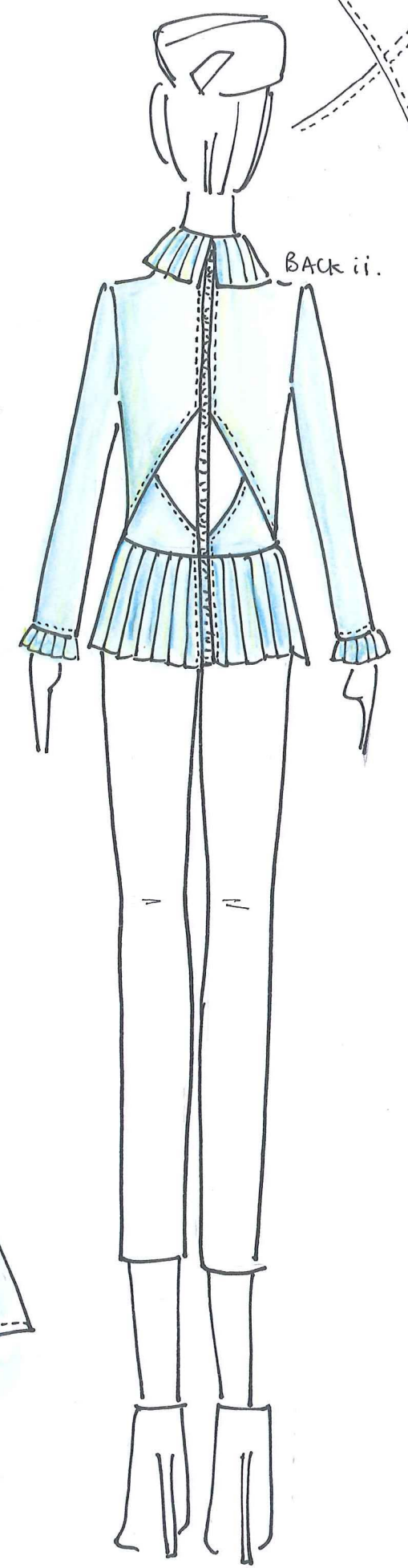
PLEATED TRIM FOR COLLAR, CUFFS AND CF BUTTON BAND COVER.

THE COLLAR IS TRIMMED AT THE BOTTOM EDGE WITH A PLEATED DECORATION THAT ADDS VISUAL APPEAL. THE COLLAR STAND IS CONSTRUCTED FROM THE TURQUOISE SILK AND BLENDS WITH THE SHIRT BODY.

THE BACK OF THE SHIRT FEATURES A BACK CUT-OUT AND THE PANELS AT THE BACK OVERLAP EACH OTHER TO FORM THE CUTOUT AND DESIGN LINES.



FRONT ii.



BACK ii.

DESIGN ii. IS A FITTED SHIRT WITH PLEATED DETAILS AND BACK ZIP FASTENING. A FRONT YOKE FORMS THE BASE OF A SMALL CUT OUT WHICH LEADS ONTO THE SINGLE BUTTON STAND AND A PLEATED COLLAR. THE SHIRT HAS DARTS AT THE FRONT FOR SHAPE AND A PLEATED REPLUM STARTS FROM THE WAIST AND CONTINUES TO JUST BELOW THE HIP. LIKE DESIGN i. IT HAS PLEATED TRIM AT THE CUFFS BUT IN THE SAME TURQUOISE SILK AS THE REST OF THE SHIRT.

SHIRT TIE i.



BACK i.

CUFFS ARE EDGED IN THE PLEATED TRIM AND THE BACK OF THE SHIRT IS QUITE LOOSE.

BUTTON & BUTTONHOLE

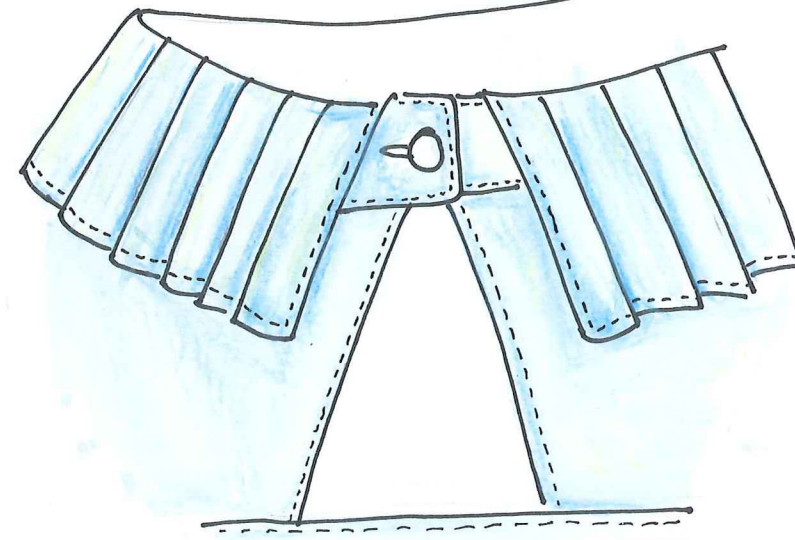


MACHINE BUTTON HOLE



SMALL PEARL SHANK BUTTON

COLLAR ii.





**AS 91337: Use visual communication techniques to generate design ideas (3 credits) – 2013**

Achievement	Achievement with Merit	Achievement with Excellence
<ul style="list-style-type: none"> <li>Use visual communication techniques to generate design ideas.</li> </ul>	<ul style="list-style-type: none"> <li>Use visual communication techniques skilfully to generate design ideas.</li> </ul>	<ul style="list-style-type: none"> <li>Use visual communication techniques effectively to generate design ideas.</li> </ul>
Visual communication techniques are used to generate ideas to show design qualities. <hr/>	Visual communication techniques are used <b>skilfully</b> to generate ideas to show design qualities with <b>clarity</b> through well-articulated visual means. <hr/>	Visual communication techniques are used <b>effectively</b> to generate ideas to show design qualities with clarity and a <b>depth of understanding</b> through well-articulated visual means. <hr/>
Design ideas are produced that explore identifiable design qualities <hr/>	<b>Divergent</b> design ideas are produced that explore identifiable design qualities <hr/>	Divergent design ideas are produced that are explored and <b>extended</b> to show identifiable design qualities. <hr/>

**Commentary:**

A good Excellence exemplar for fashion and textiles design. Excellent visual communication skills, with outstanding freehand sketching utilised in an effective illustrative manner. Strengths in the communication resides with the aesthetics, though there are some functional detailing in terms of garment construction drawings that show some detailing and assembly.

Design ideas are divergent and fully extended, with some good idea generation from some creative starting themes through some sophisticated exploration and experimentation through drawing.

Technical skills and thinking throughout this project a strong feature of this submission.

**E**