

NGĀ

pōkaitahi

Ā-MOTU



Pōkaitahi ā-motu mō ngā ākonga kura tuarua

He tohu mātauranga
e hāngai ana ki te mahi



NEW ZEALAND QUALIFICATIONS AUTHORITY
MANA TOHU MĀTAURANGA O AOTEAROA

Kupu whakataki

I ēnei rā, e wātea ana ki a koe he huinga whānui o ngā tohu mātauranga i te kura tuarua. Tāpiri atu ki ngā tohu mātauranga pērā me Te Taumata Mātauranga ā-Motu Kua Taea (NCEA), arā atu ngā Pōkaitahi ā-motu mātanga.

Mā te pānui whakamārama nei e whakarāpopoto ngā kōwhiringa huhua e wātea ana.

Kei a koe anō te tīmatanga me te mutunga o ō akoranga. He tīmatanga pea ēnei tohu mātauranga mō ētahi akoranga anō, kia neke whakamua hoki i te mahi kua whiriwhiria e koe, he whakawhānui noa iho rānei i tō mātauranga whānui.

Ko ētahi tohu mātauranga:

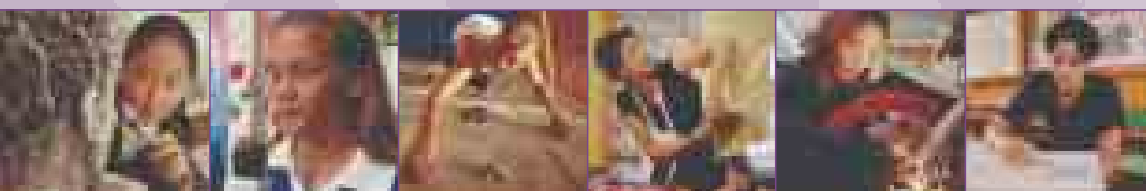
- ka oti i a koe i te kura
- ka tīmata i te kura, ā, ka mutu i te wāhi mahi, i tētahi kura tuatoru rānei
- ka kotahi tau te roa
- ka oti i te wā roa ake, i runga anō i ngā akoranga e hiahia ana koe, i ō tikanga mahi me te momo aromatawai e wātea ana ki a koe.

Te whiwhi pōkaitahi ā-motu

Ki te whiwhi koe ki tētahi Pōkaitahi ā-motu, me mātua riro i a koe ngā whiwhinga e hiahiatia ana. Ki te riro mai i a koe ētahi whiwhinga mai i te Anga Tohu Mātauranga, me mātua tutuki i a koe ngā paerewa ā-motu. E whakaatu ana ēnei i ngā pūkenga me ngā mātauranga e hiahiatia ana mō tētahi āhua pū o te akoranga.

Kia aromatawaia koe, ka rēhitatia koe hei ākonga i te Mana Tohu Mātauranga. Ia tau ka kohi whiwhinga, ka kohi tohu mātauranga rānei koe, ka whakawhiwhia ki a koe tētahi rārangi whakatutukitanga i roto i tētahi Pūrongo Ako. Ka whakaatu tēnei ki ngā kaituku mahi i ngā akoranga kua tutuki i a koe, ā, he wāhanga matua hoki o tō tāhuhu tangata.

Ko te nuinga o ngā tohu mātauranga ā-motu e wātea ana ki te katoa, engari i ētahi wā e hiahiatia ana kia mahi kē koe i tētahi wāhi, kia whakaatu rānei koe i te mātauranga ōrite. Mā tō kura koe e whakamōhio.



Tohu Mātauranga Mātanga – e whakawhānui ana i te akoranga

Ka tuku pea tō kura i ētahi tohu mātauranga mātanga, i ētahi paerewa rānei e āhei ai koe ki te tīmata i tētahi tohu mātauranga mātanga.

He Pōkaitahi ā-motu me ngā paerewa ā-motu e wātea ana i ngā akoranga mātanga e whai ake nei:

Ahuwhenua	Mahi Kai	Reo Irirangi
Tiaki Kararehe	Huanga Kai	Reo Māori
Ratonga Rerehua	Ono Rākau	Te utu ki te Kiritaki me te Kaihoko
Hangawaka	Taputapu ā-whare	Te Hanga Huarahi
Whakahaere Kaipakihi	Kai Rākaihuru	Te Kirimana Mahi Pāmu
Whakahaora Animation	Hauora (Hauora hapori Māori)	Pūtaiao
Whatu Kākahu	Ahuone	Security
Pūkenga Pārongo	Manaakitanga (tae atu ki te tunu kai)	Kaimoana Māori
Whakamahi Rorohiko	Taitapa	Tākaro Hukapapa
Kanikani	Kaipakihi me te Whakahaerenga Māori	Tākaro
Whakaari	Kapa Haka (Māori Performing Arts)	Mātauranga Tākaro
Raweke Hiko	Te Ahumahi Waka	Tautoko i te Hunga Pakeke
Hangarau Hiko	Waiata	Te Waharoa
Pāpaho Hiko	Ngā Mahi a te Whare Pora	Torotoro Waea
Reo Pākehā Hei Reo Tuarua (ESOL)	Peita me te Whakapaiapai Whare	Tāpoi
Hōiho	Toi Whakaari, Kanikani	Hāereere
Tākaro Hoari	Mahi Kirihou	Toi Ataata
Whitiāhua me te Pouaka	Te Whakanaonga Pūoru	Whakairo
Whakaata		

Kua oti te nuinga o ēnei tohu mātauranga te whanake i ngā rōpū whakangungu ahumahi, ā, e wātea ana hoki i roto i ngā akoranga kura tuatoru, i ngā wāhi mahi rānei. Ko ngā Kāhui tohutohu ā-motu, ngā tohunga Māori rānei kua mōhiohia tō rātau mākohakoha e whakawhanake ana i ngā tohu mātauranga me NZQA.

Ka oti i a koe ētahi tohu mātauranga i a koe i te kura. Mō ētahi atu, ka tīmata koe i te kura. Tāpiri atu ki te whakawhānui i tō mātauranga me ō pūkenga, mā te tīmata i ētahi Pōkaitahi ā-motu mātanga ka paku rongo i ngā wāhi mahi hei mahi māhau i ngā rā e haere ake nei.

Kia maumahara koe, ka whai wāhi ētahi whiwhinga mai i tētahi tohu mātauranga ki tētahi atu. Ko ēnei whiwhinga katoa ka whai wāhi ki te NCEA.

Ka āhei ngā kura ki te tuku akoranga me te aromatawai i te maha o ēnei wāhi ako. Ka āhei hoki ki te whakarite whakangungu me te aromatawai mā roto i ngā kaituku kura tuatoru. I ētahi wāhi ako, mā te rōpū whakangungu ahumahi e aromatawai. Kōrero ki tō kura mō ngā huarahi e wātea ana.

Tohu mātauranga whānui

Te Taumata Mātauranga ā-motu Kua Taea (NCEA) – tohu mātauranga kura tuarua ā-motu

Ko te Taumata Mātauranga ā-motu Kua Taea (NCEA) te tohu mātauranga matua mō ngā ākonga kura tuarua, ā, e wātea ana i te taumata 1 me te taumata 2. Ka wātea te taumata 3 ā te tau 2004. E whakaaetia ana te NCEA huri noa i te motu me te ao e ngā kaituku mahi me ngā kaituku kura tuatoru.

Ka āhei koe ki te ako i tētahi huinga o ngā kaupapa mō te NCEA. Mō te taumata 1, 16 ngā whiwhinga e hiahia ana koe mō te mōhio ki te tuhituhi me te pānui pukapuka me te mōhio ki te tatau, ā, e 80 ngā whiwhinga katoa mai i ngā paerewa me ngā paerewa paetae. Ko ērā atu kaupapa ako ka akona e koe ka hoki ki ō hiahia, ō kahanga hoki me ngā akoranga e tukua ana e tō kura.

I raro i te NCEA ka kawea e koe he paerewa paetae, he paerewa hoki – kia tutuki i a koe te paerewa, ka riro i a koe he whiwhinga. Mō ngā paerewa paetae, ka tutuki i a koe te paerewa ki te tohu taumata kaiaka, kairangi rānei, ā, he whakamātautau anō mō ētahi paerewa.

Ka taea hoki ngā taumata rerekē te ako i te wā kotahi i raro i te NCEA. Hei tauira, ehara ngā paerewa, paerewa paetae rānei taumata 1 i te akoranga tōmua mō te ako i ngā paerewa taumata 2. Ka āhei hoki koe ki te ako i ētahi paerewa taumata 1 i a koe e ako ana i ētahi atu paerewa taumata 2. Ka whakaaturia te roanga atu o ngā kōrero mō ō whakatutukitanga i roto i tō Pūrongo Ako.

Ko ngā whiwhinga ka riro i a koe mō ngā paerewa me ngā paerewa paetae i raro i te NCEA, ka whai wāhi anō ki ētahi atu Pōkaitahi ā-motu.

Mō te roanga atu o ngā kōrero e pā ana ki te NCEA, hono ki te paetukutuku NCEA: www.ncea.govt.nz. E wātea ana hoki he tānga. Tono īmēra ki coms@nzqa.govt.nz me tō wāhi noho, me tohu anō hoki i tō hiahia ki te Aratohu NCEA, te pukapuka NCEA roa rānei, he aha hoki te reo e hiahia ana koe me te nui o ngā kape e hiahiatia ana. E wātea ana te Aratohu i te reo Arabic, te Hainamana Tūturu, te reo o ngā Kuki Airani, te reo Pākeha, Whīti, Hindi, Hapanī, Korean, Niuean, Punjabi, Hāmoa, Somali, Te Reo Māori, Thai, Tonga, Tokelau, Tuavalu me te reo o Vietnam.



Te Pōkaitahi ā-motu Māori (Te Waharoa) – e whakaae ana ki te mātauranga Māori

He tohu mātauranga taumata 2 a Te Waharoa e whakaae ana ki te huinga katoa o ngā pūkenga me ngā mātauranga Māori kua tutuki i tētahi ākongā. He tīmatanga anō hoki mō ētahi atu tohu mātauranga.

E 500 ngā paerewa e whai wāhi ana ki Te Waharoa tae atu ki ngā kaupapa ako whānui pērā i te Pūtaiao, i te reo Māori, i te Mātai Matawhenua, i te Hangarau, i te Tikanga ā-iwi me te Pāngarau.

Ko ētahi atu kaupapa ako pērā me te Whakairo, te Raranga, te Reo Māori, Tikanga me te Kapa Haka (Māori Performing Arts) hei kōwhiringa e tino hiahia ana e ngā kura. Ko ngā whiwhinga katoa ka kohia mō ēnei wāhi ako ka whai wāhi ki Te Waharoa.

E 80 ngā whiwhinga mō tēnei tohu mātauranga:

- e 30 whiwhinga i te taumata 1, 2 rānei mai i te marau Māori
- e 40 whiwhinga i te taumata 2 teitei ake rānei mai i te marau Māori
- 0 whiwhinga i te taumata 1 teitei ake rānei mai i tētahi marau i runga i te Anga Tohu Mātauranga

Ki te oti i a koe Te Waharoa, he nui ngā whiwhinga i a koe ka whai wāhi ki te NCEA me ētahi atu tohu mātauranga. Ki te riro i a koe ngā whiwhinga mai i te Reo Māori me te Pāngarau mō te tohu mātauranga Te Waharoa, te āhua nei kua tutuki kē i a koe te NCEA taumata 1, ā, kāore rawa atu e hiahia ana ētahi atu whiwhinga.

Mō ētahi kōrero anō mō ngā paerewa marau Māori, tēnā haere ki te wāhanga Anga Tohu Mātauranga (National Qualifications Framework) o te paetukutuku NZQA kei www.nzqa.govt.nz. Ki te kore, tonu īmēra ki te kōwae Ratonga Tohu Mātauranga Māori, e tiaki ana i te whanaketanga o ngā tohu mātauranga Māori, kei mqs@nzqa.govt.nz.

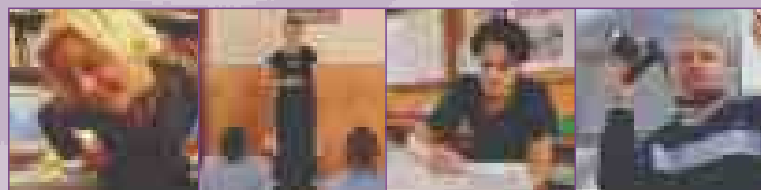
Te Pōkaitahi ā-motu e pā ana ki ngā Pūkenga ā-mahi (NCES) – he tīmatanga mō ētahi atu tohu mātauranga

Ko Te Pōkaitahi ā-motu e pā ana ki ngā Pūkenga ā-mahi (NCES) he tohu mātauranga taumata 1 ka riro mai ai i a koe he pūkenga e tino hiahia ana i te nuinga o ngā wāhi mahi. He tīmatanga tēnei mō ētahi tohu mātauranga anō. Mā te NCES e ngākau titikaha ai ngā kaituku mahi he pūkenga tōtika tō ngā tāngata ka uru atu hei kaimahi mā rātau.

Ka whakaatu te NCES, kua kaha koe i roto i ēnei:

- te whakawhitihiti kōrero ā-waha, ā-tuhi rānei
- te mōhio ki te tatauranga
- te mahi tahi me te whakatauranga raruraru
- ngā pūkenga e hāngai pū ana ki te wāhi mahi, pērā me te whakarurutanga me te whakaoti mahi i runga i te wā i whakaritea
- te whāwhā rorohiko
- ngā takohanga me ngā tika o te kaimahi
- tō whakahaere i a koe anō.

Mō te roanga atu o ngā kōrero e pā ana ki te NCES, haere koe ki te wāhanga Anga Tohu Mātauranga (National Qualifications Framework) o te paetukutuku NZQA kei www.nzqa.govt.nz. Ka wātea ki a koe he kape o tā mātau pānui whakamārama NCES mā te tango ā-rorohiko i te paetukutuku, mā te tonu īmēra ki coms@nzqa.govt.nz, tāpirihia tō wāhi noho me te nui o ngā kape e hiahia ana koe.



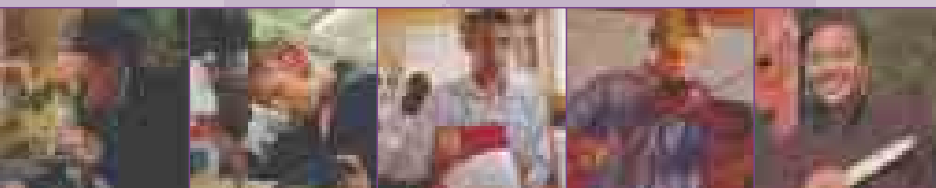
Pōkaitahi ā-motu e pā ana ki te Whakatutukitanga Ako (NCLA) – e tautoko ana i te auroa tonu o te ako

Ko te Pōkaitahi ā-motu e pā ana ki te Whakatutukitanga Ako (NCLA) he tohu mātauranga whānui e tautoko ana i te auroa tonu o te ako. Ka toro mai i te taumata 2 ki te taumata 4 me tētahi huinga o ngā wāhi ako.

O ngā whiwhinga e 240 e hiahiatia ana kia tutuki i a koe te NCLA, kua whakatakotoria he tau e pā ana ki ngā whiwhinga pūkenga pārongo me te/reo Pākeha rānei me te pāngarau. Ko te toenga ka riro mai i ngā wāhi katoa o te anga ahakoa he aha. Ka whai wā ngā paerewa me ngā paerewa paetae.

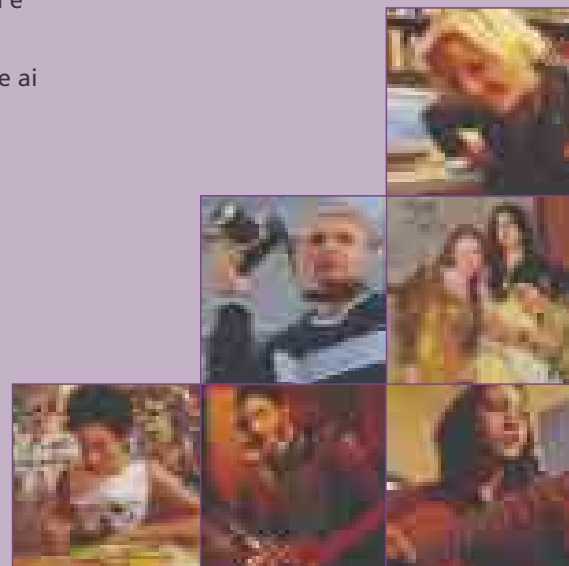
Ki te oti i a koe te NCLA, ka mōhio ngā kaituku mahi me ngā kaituku kura tuatoru i kaha o whakatutukitanga puta noa i ngā kaupapa ako maha. Ka whakaatua mai te roanga atu o ngā kōrero i tō Pūrongo Ako.

Mō ētahi kōrero anō mō te NCLA, haere ki te wāhanga Anga Tohu Mātauranga (National Qualifications Framework) o te paetukutuku NZQA kei www.nzqa.govt.nz kōrero rānei ki tō kura.



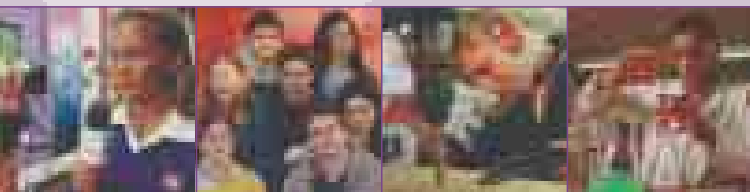
He aha te painga o ngā tohu mātauranga ā-motu?

- **Whakaaetanga** – kia whakaaetia, kia mana ō pūkenga, ō akoranga me tō mātauranga huri noa i te motu me te ao, ā, kohia he whiwhinga mō ngā pūkenga kua mau kē i a koe.
- **Kōwhiringa Whānui** – e tae atu ana ngā tohu mātauranga ā-motu i tētahi huinga whānui o ngā ahumahi, o ngā pūkenga matua, kano hoki, me ētahi atu wāhi ako.
- **Ka taea te whakawhiti** – ko ngā whiwhinga mai i tētahi tohu mātauranga ka whai wāhi pea ki tētahi atu, ahakoa kei hea i runga i te Anga Tohu Mātauranga. Nā reira ka whai wāhi ngā whiwhinga paerewa katoa ki te NCEA. Whakaoti tētahi wāhanga o tētahi tohu mātauranga i tētahi wāhi, whakamutua te toenga ki wāhi kē.
- **Nui ake ngā huarahi** – e whakaaetia ana ngā tohu mātauranga ā-motu e ngā kaituku mahi huri noa i te motu me te ao. Nā te mea i whanaketia e ngā tohunga, e hāngai ana aua tohu mātauranga ki te ahumahi, ā, ka mau i a koe ngā pūkenga e hiahiatia ana kia neke whakamua me te whanake i tō wāhi mahi. Mā tō tohu mātauranga ā-motu e matua mōhiohia ai he pono ō pūkenga.
- **Whakaū Kounga** – kei te whakawhanaketia ngā paerewa ā-motu me ngā tohu mātauranga ā-motu e ngā tohunga, ka tiakina e NZQA, ā, e tukua ana e ngā kaituku kua whakamanatia.
- **Tāwarīwaritanga** – ka āhei koe ki te kōhi whiwhinga ki tētahi tohu mātauranga i te pāhuretanga o te wā, ā, ka whiriwhiri koe, he aha, ā hea, he pēhea hoki te ako.
- **Rata ana** – E rata ana ngā Pōkaitahi ā-motu ki ō hiahia me ngā hiahia o te ohanga o Aotearoa. Māna anō koe e mau puku ki ngā pūkenga e tika ana mō ngā rā kei mua me te whakatū tūāpapa mō tētahi huarahi mahi, te whakangungu me te whanaketanga ā muri ake nei.
- **Watea ana ki te katoa** – kāore he tohu mātauranga tōmua e hiahiatia ana kia tīmata koe.
- **E tika ana** – Mā te pūnaha whakaōrite o NZQA e tika, e rite ai ngā whakataunga a ngā kaiaromatawai mō ngā mahi e aromatawaia ana e rātau.



He aha e whai atu ana?

- Ka tuku akoranga tō kura i runga i āna rauemi me ōna tino hiahia. Kōrero ki tō Kaitono a te Tūmuaki NZQA kia mōhio koe he aha ngā tohu mātauranga e wātea ana ki a koe.
- Toroa te paetukutuku NZQA kei www.nzqa.govt.nz mō ngā kōrero mōhoā e pā ana ki ngā tohu mātauranga me ngā kaituku. Whakamahia te wāhanga whakapā (contact section) kia tonu īmēra mai e pā ana ki ō pātai.
- Tono īmēra ki helpdesk@nzqa.govt.nz, waea 04 802 3000 waea whakaahua rānei 04 802 3112.
- Toroa te paetukutuku NCEA kei www.ncea.govt.nz mō ngā kōrero e hāngai pū ana ki te NCEA.
- Tono īmēra ki help@ncea.govt.nz me ngā me ngā pātai NCEA, waea mai rānei ki te Waea Āwhina NCEA 0800 NCEA HELP (0800 623 243).



Te Mana Tohu Mātauranga o Aotearoa
Pouaka Poutāpeta 160
Te Whanganui ā-Tara

Waea 04 802 3000

Waea whakaahua 04 802 3112

Ī-mera helpdesk@nzqa.govt.nz

Ipurangi www.nzqa.govt.nz



NEW ZEALAND QUALIFICATIONS AUTHORITY
MANA TOHU MĀTAURANGA O AOTEAROA