

No part of the candidate evidence in this exemplar material may be presented in an external assessment for the purpose of gaining credits towards an NCEA qualification.

Design and Visual Communication

AS 91338

Exemplar D - Achieved

AS91338: Produce working drawings to communicate technical details of a design (4 credits) 2016

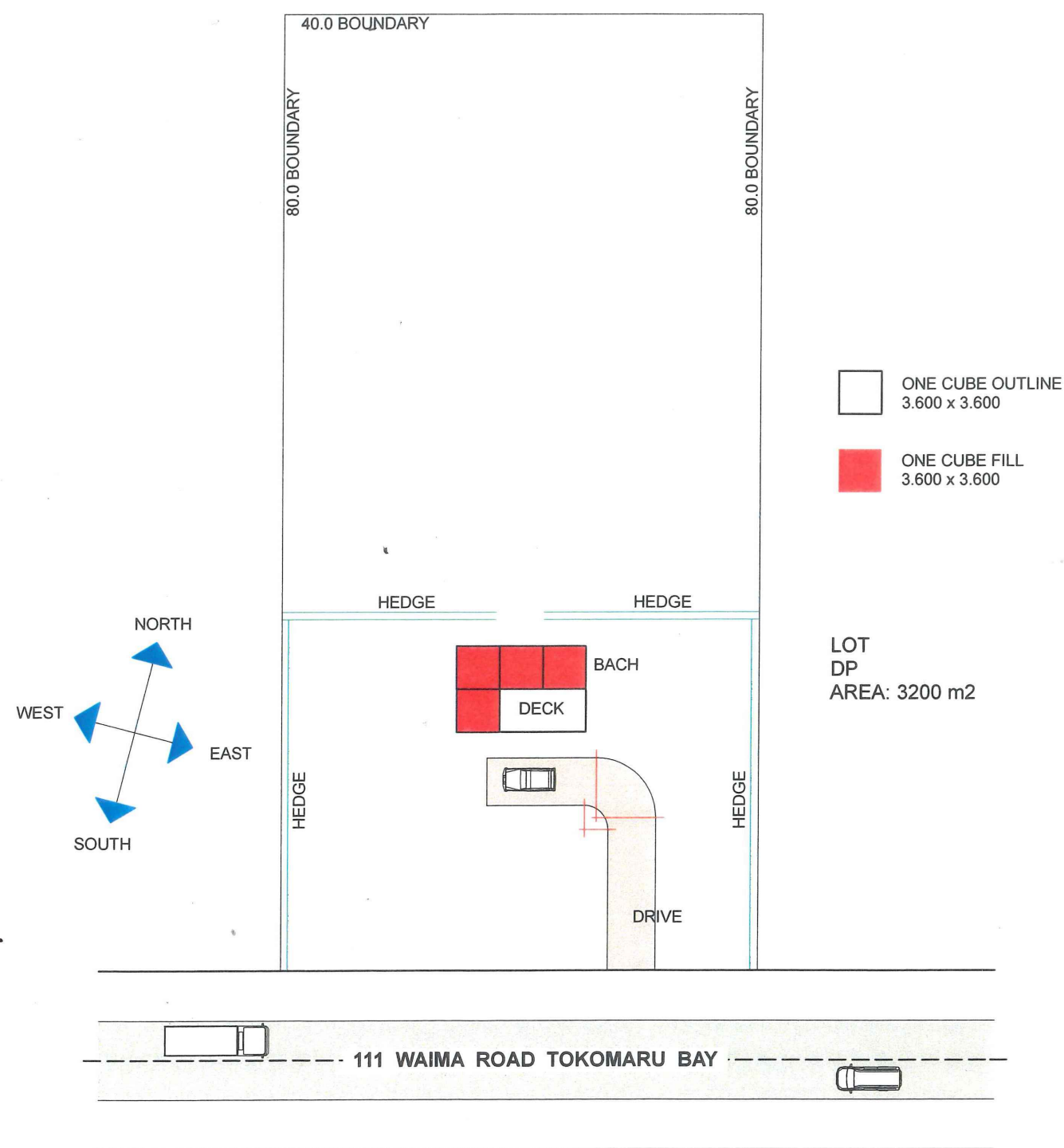
Achievement	Achievement with Merit	Achievement with Excellence
<ul style="list-style-type: none">Produce working drawings to communicate technical details of a design.	<ul style="list-style-type: none">Produce working drawings to clearly communicate technical details of a design.	<ul style="list-style-type: none">Produce working drawings to effectively communicate technical details of a design.
Produce a set of related 2D instrumental working drawings that communicate technical details showing complex visual information .	Produce a set of working drawings that clearly communicate technical details showing complex visual information.	Produce a coherent set of working drawings that effectively communicate technical details showing complex visual information.
Demonstrate an ability to use drawing conventions in a working drawing.	Demonstrate an ability to apply drawing conventions appropriately to working drawings.	Demonstrate an ability to apply drawing conventions appropriately to the type of working drawing.

A

Comments:
This set of drawings is a good solid Achieve. The site plan clearly shows the building positioned on the site with a North point orientating the building. The plan view is well drawn using the correct conventions and communicates the technical details in the form of room fittings, door swings and windows. The elevations are also drawn accurately showing windows and doors although the materials are not shown there are notes to indicate the exterior materials. The candidate has a good understanding of how to use CAD. Although the elevations are not referenced back the Plan or Site Plan (North, South, East, West) the pages are linked through the title and page numbers. It is important to reference and link all of the drawings to one another to enable them to be read as a coherent set of working drawings.

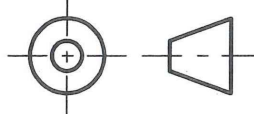
To allow this set of drawings to achieve at the higher levels there is a need to communicate the technical details more clearly and effectively. A cross section with some enlarged construction details or a cross section drawn to a larger scale would allow these drawings to communicate the visual information more effectively.

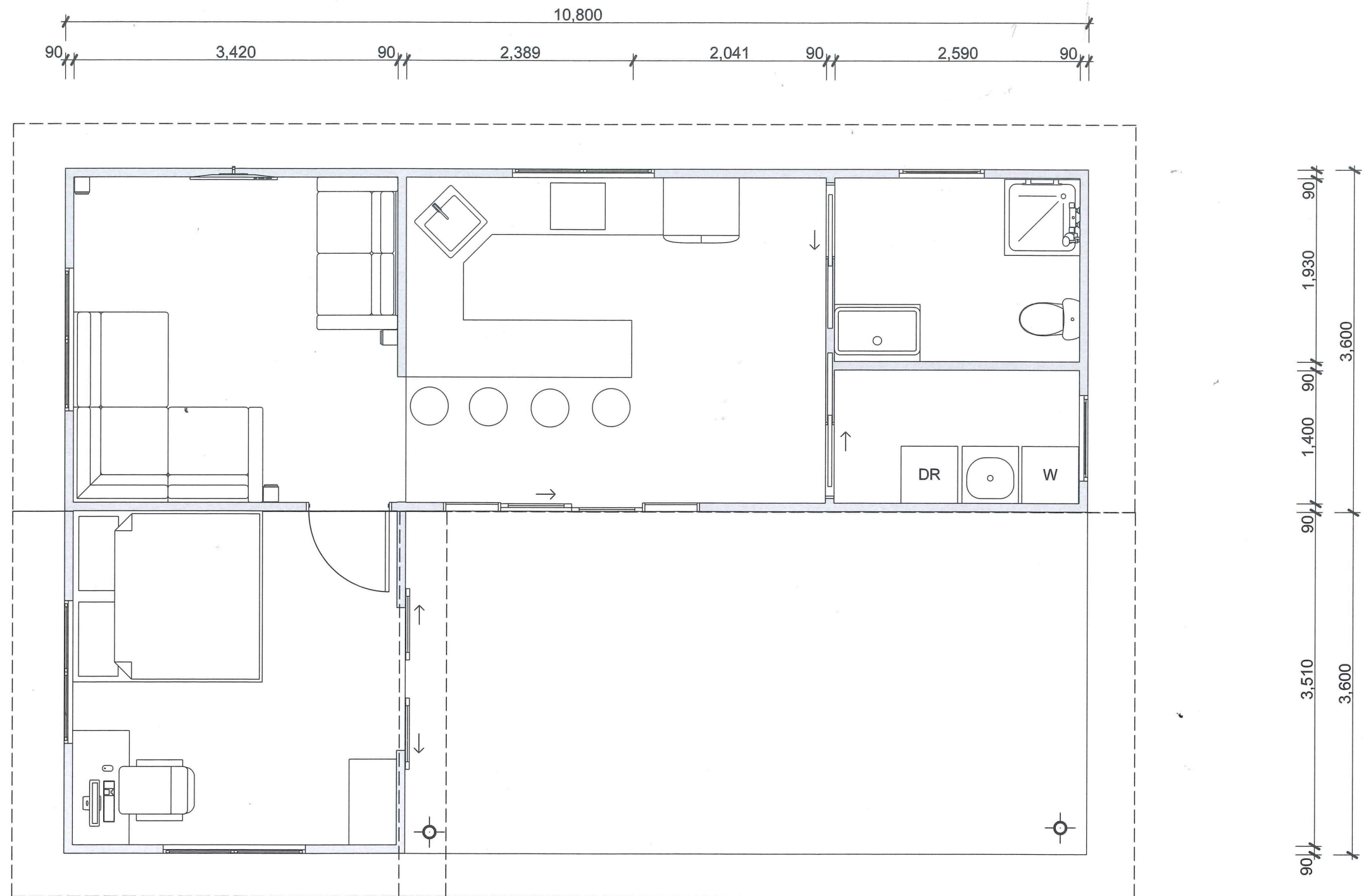
The drawings have been drawn using standard scales: 1:500, 1:100, and 1:50.



VIEW TO BEACH
ACROSS ROAD

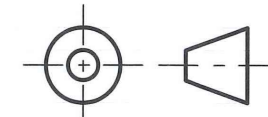


	SITE PLAN ORTHOGRAPHIC PROJECTION	CUBUILD HOMES MODULAR HOME 111 WAIMA ROAD . TOKOMARU BAY		SCALE 1:500 DRAWING NUMBER: 04
--	--------------------------------------	---	---	-----------------------------------



FLOOR PLAN
ORTHOGRAPHIC PROJECTION

CUBUILD HOMES MODULAR HOME
111 WAIMA ROAD . TOKOMARU BAY



SCALE 1:50
DRAWING NUMBER: 05

ROOF PITCH 10°
ROOF CLADDING LONG RUN
COLORSTEEL CORRUGATED
PROFILE

PLATFORM STEP
HARDWOOD TIMBER DECK
WITH PLATFORM STEP

WALL CLADDING
150 WIDE LINEA
WEATHERBOARDS

GL

GL

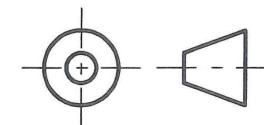
GL

EXTERIOR WINDOWS / DOORS
ALL ALUMINIUM DOUBLE GLAZED

GL

ELEVATIONS 1 - 4
ORTHOGRAPHIC PROJECTION

CUBUILD HOMES MODULAR HOME
111 WAIMA ROAD . TOKOMARU BAY



SCALE 1:100
DRAWING NUMBER: 06