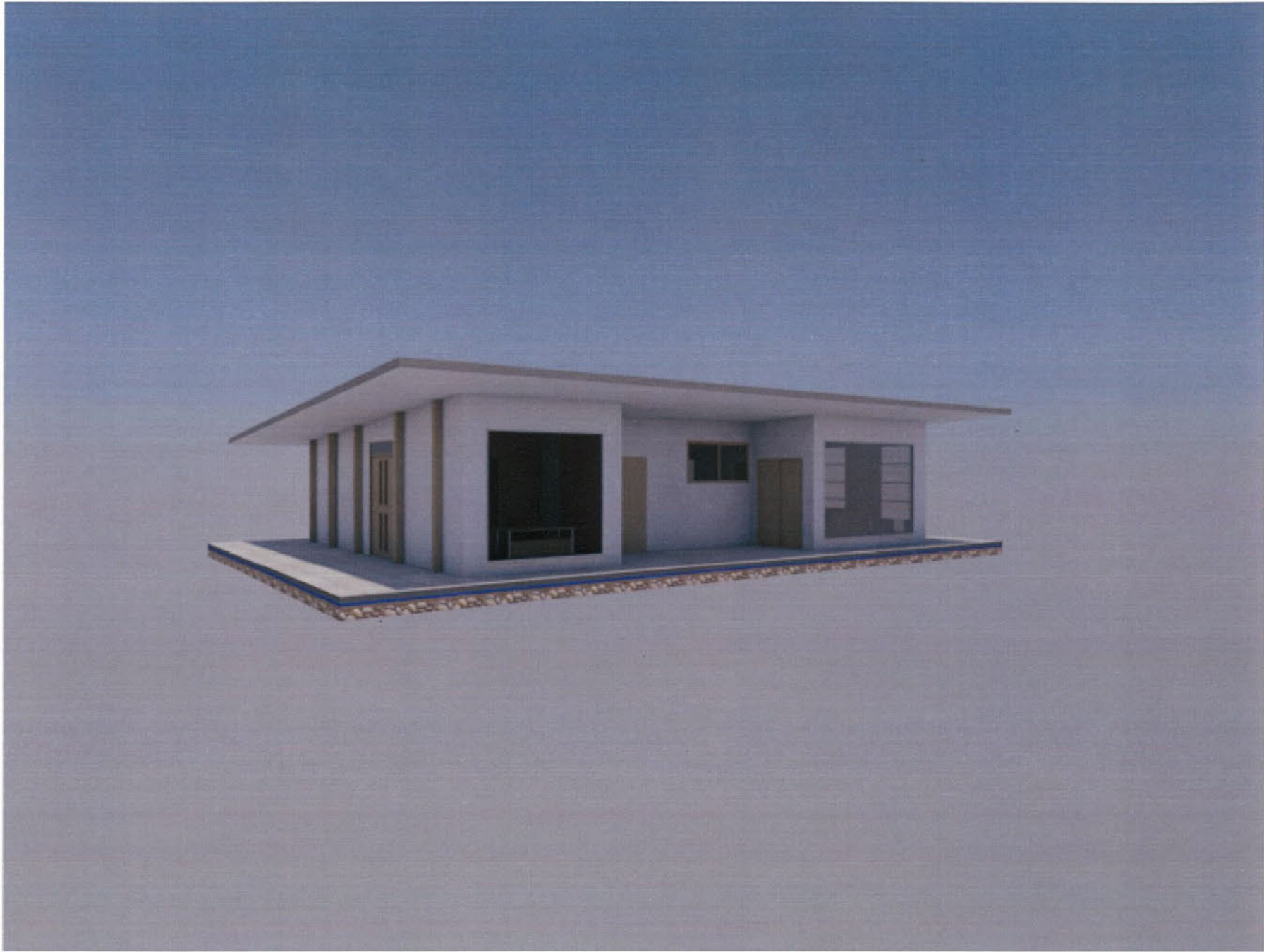


No part of the candidate evidence in this exemplar material may be presented in an external assessment for the purpose of gaining credits towards an NCEA qualification.

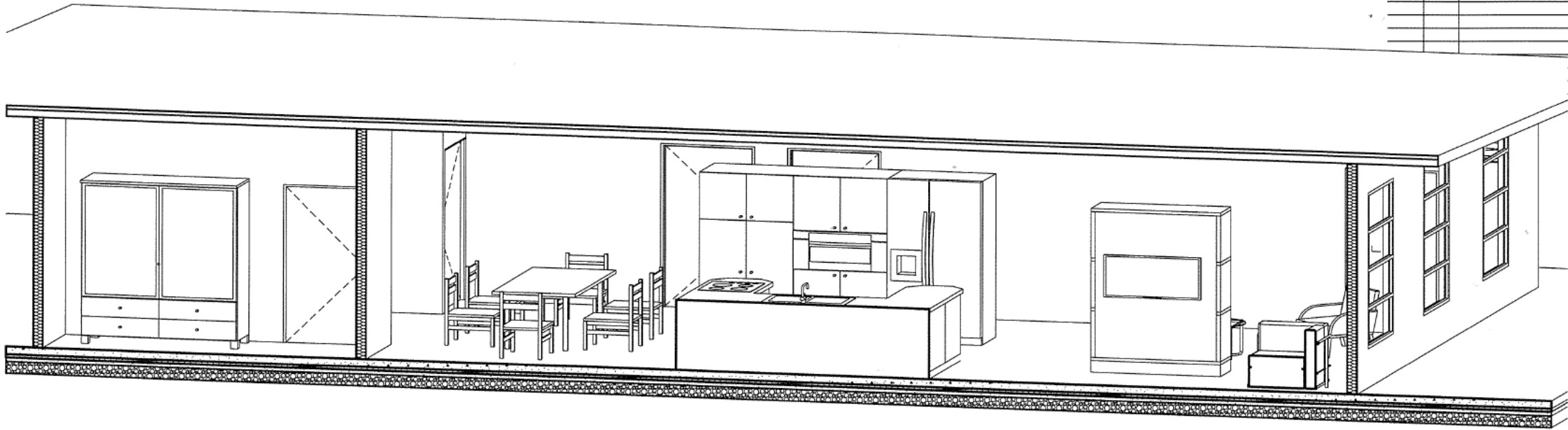


ARCHICAD EDUCATION VERSION

RevID	ChID	Revision	Date

RETREAT PRESENTATION	
31/10/2017	SHEET 1

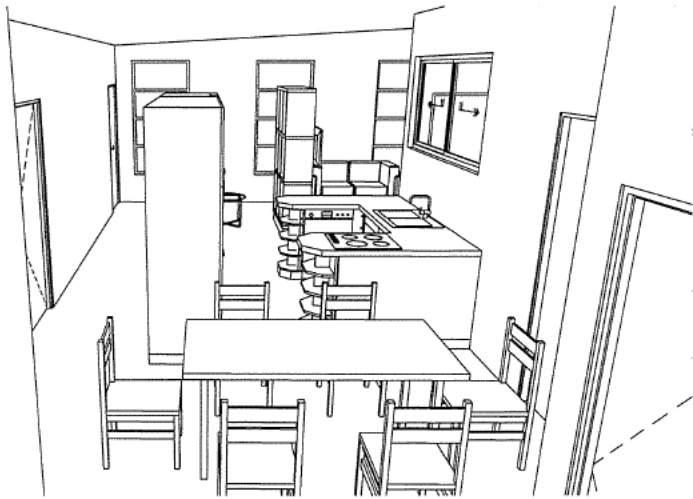
RevID	CHID	Revision	Date



3 3D CUTAWAY (1) 1:50



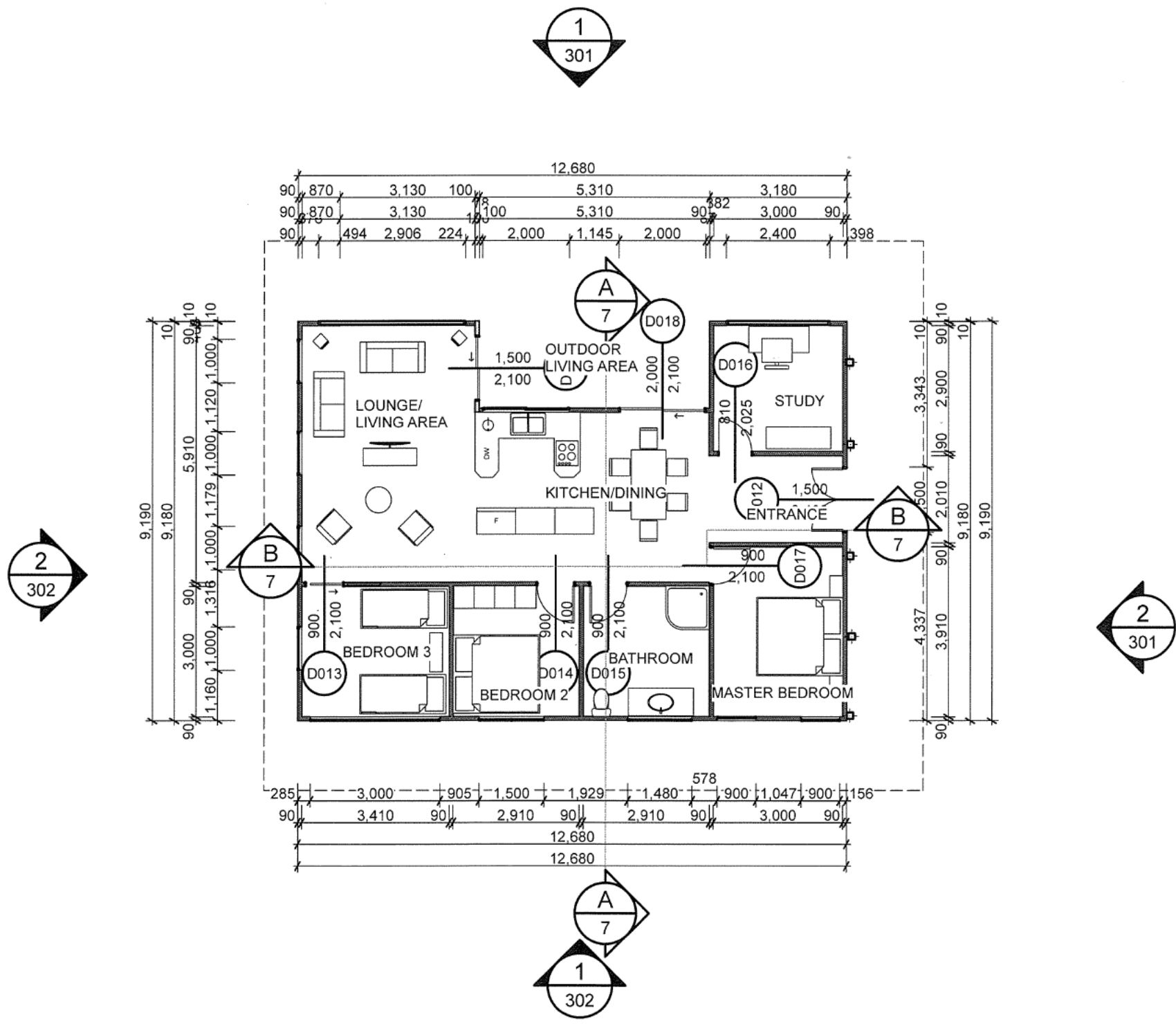
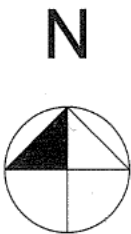
1 EXTERIOR VIEW (1) 1:100



2 INTERIOR KITCHEN/DINING 1:100

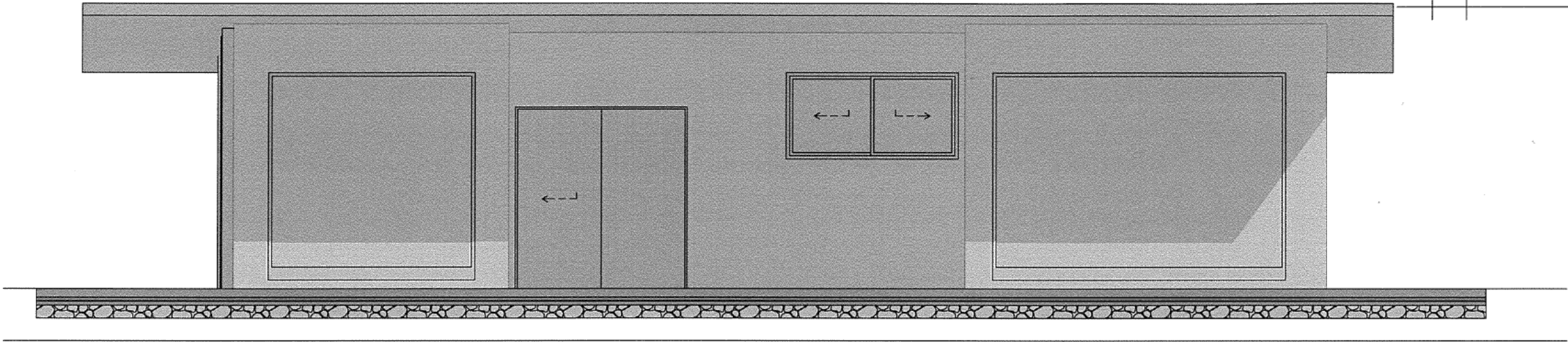
PRESENTATION DRAWINGS	
	SCALE AS SHOWN
31/10/2017	SHEET 2

RevID	CHID	Revision	Date

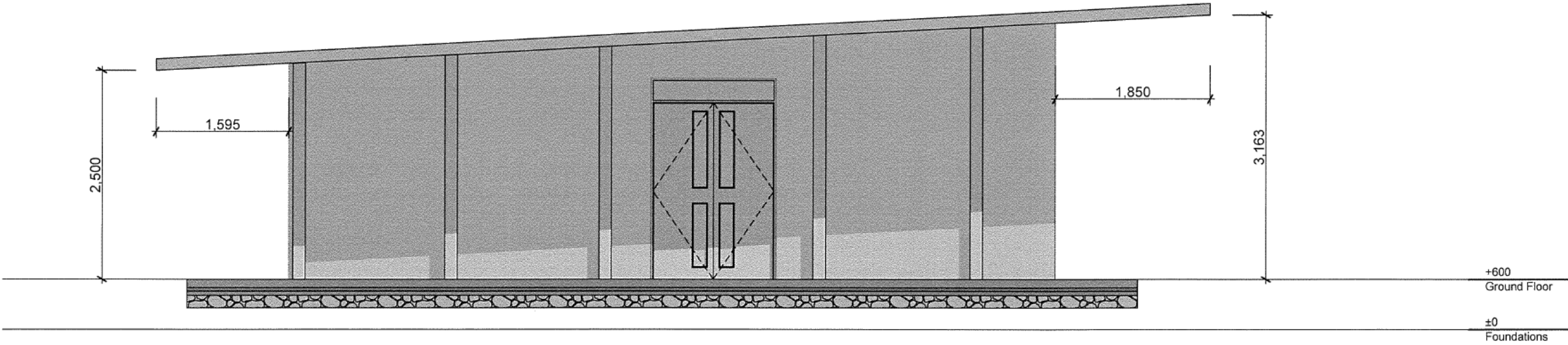


RETREAT FLOOR PLAN	
	SCALE 1:100
31/10/2017	SHEET 3

RevID	ChID	Revision	Date



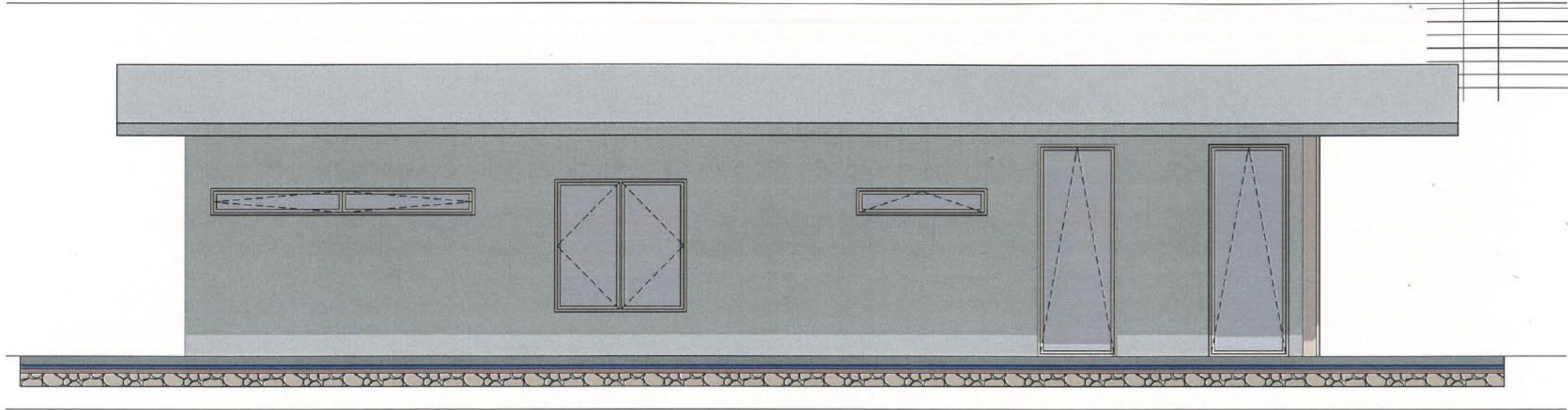
1 North Elevation 1:50



2 East Elevation 1:50

ELEVATION VIEW	
	SCALE 1:50
31/10/2017	SHEET 4

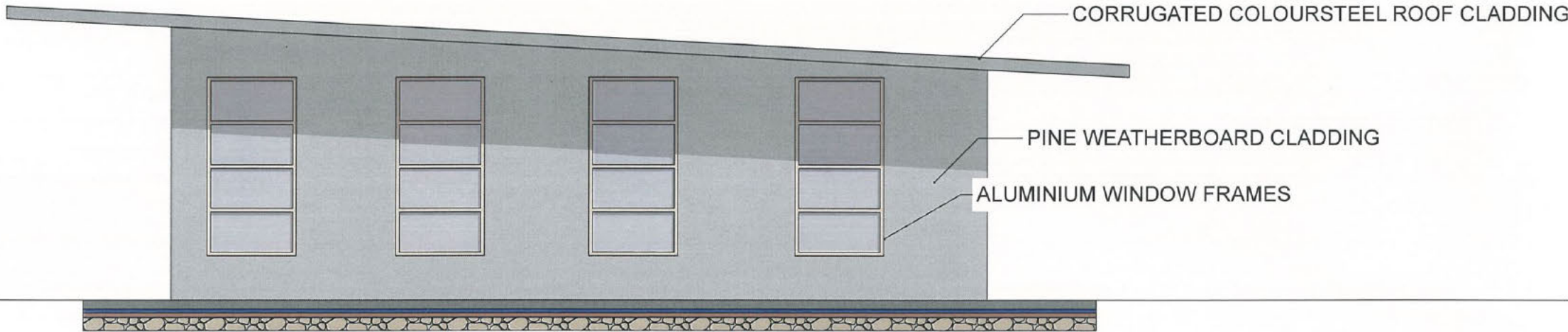
RevID	ChID	Revision	Date



1

South Elevation (1)

1:50

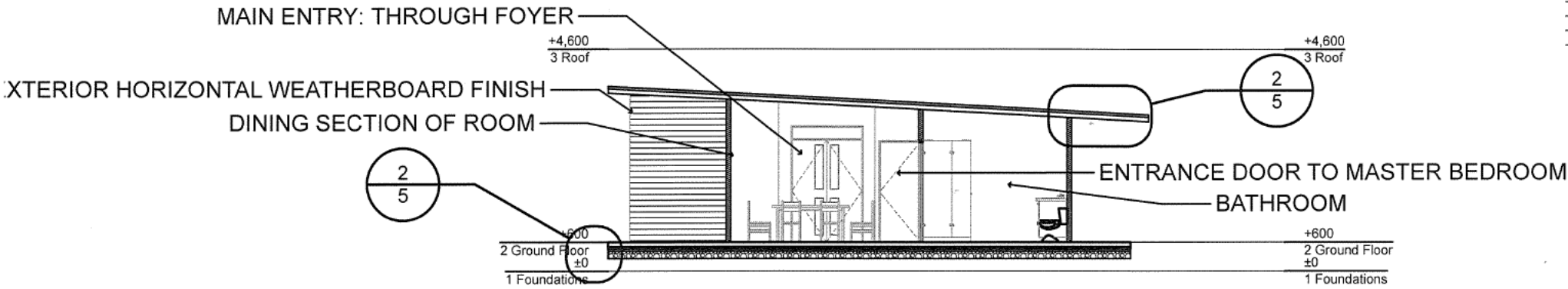


West Elevation

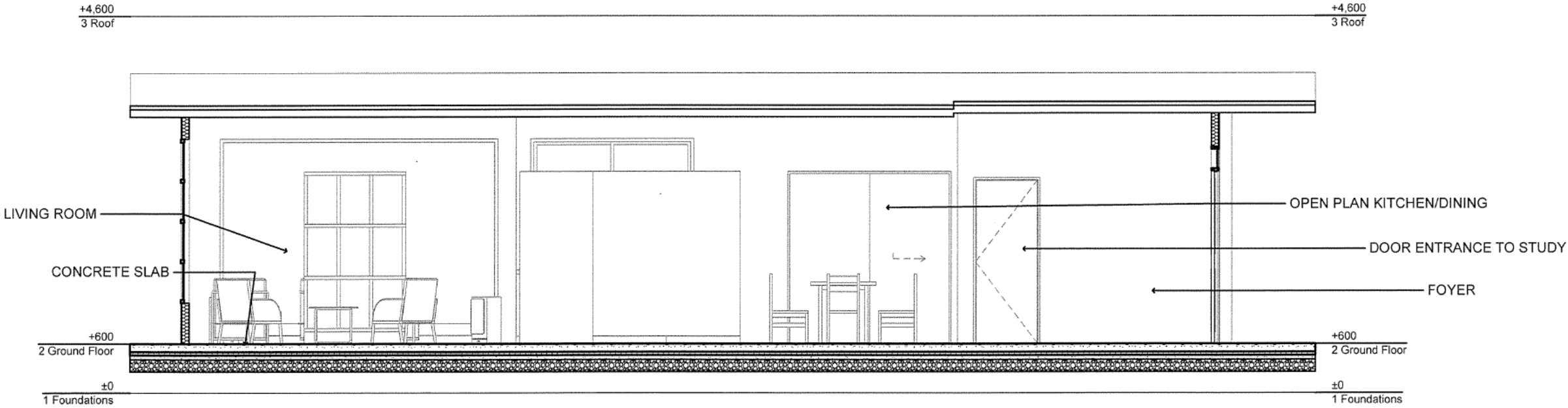
1:50

ELEVATION VIEW	
	SCALE 1:50
31/10/2017	SHEET 5

RevID	ChID	Revision	Date



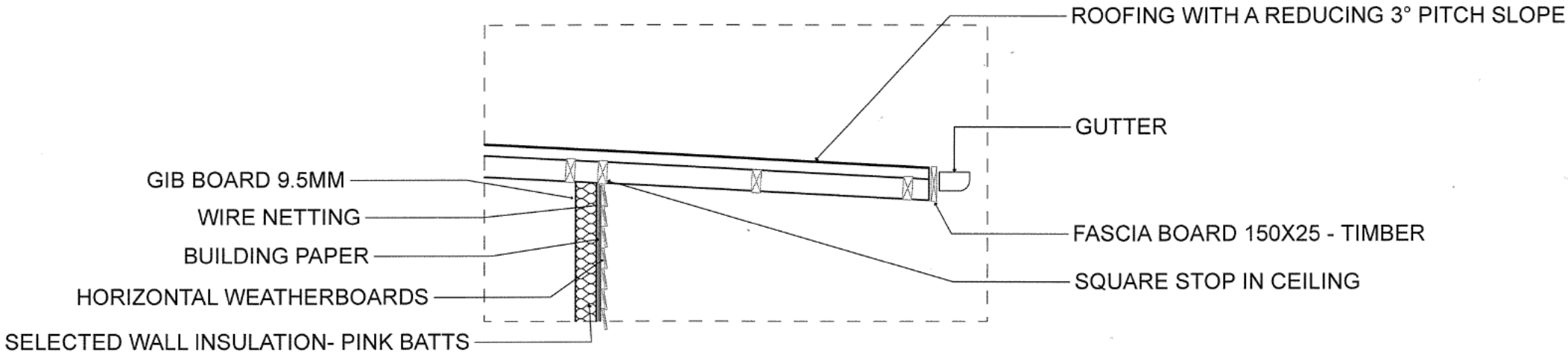
Section AA (2) 1:100



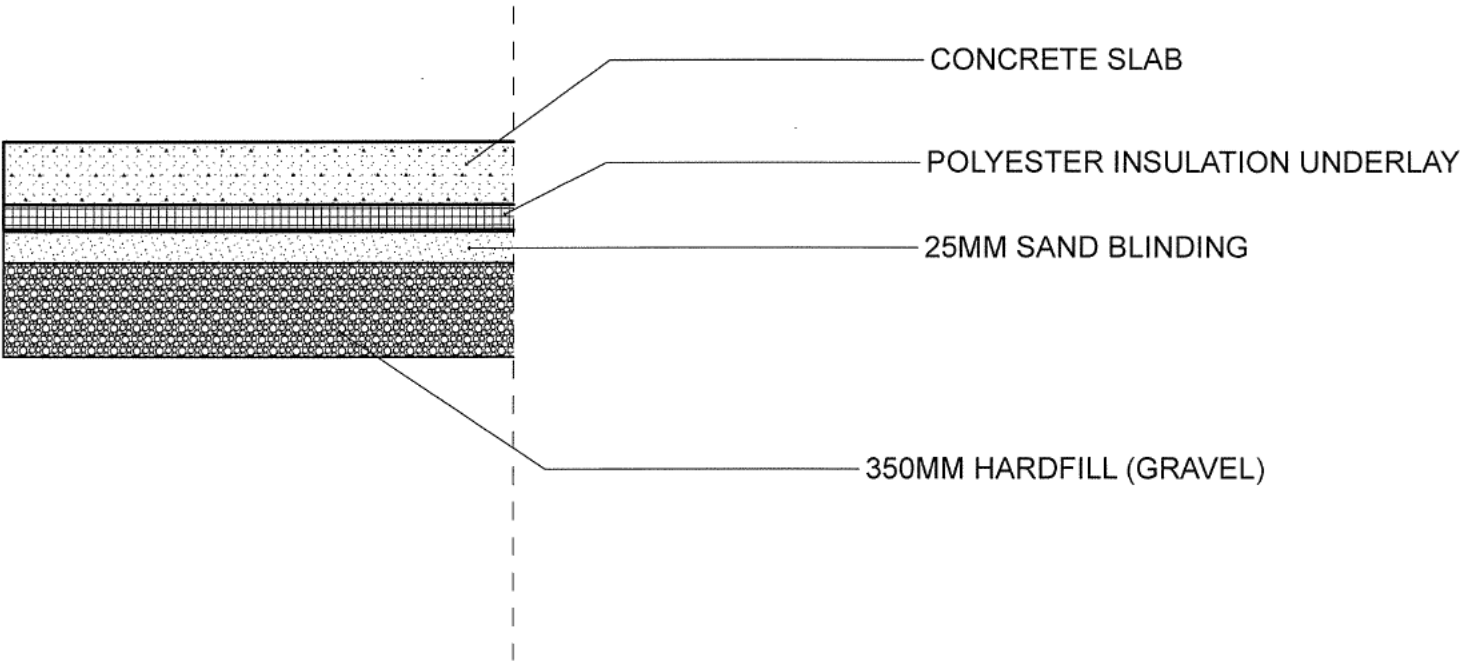
2 Section BB (1) 1:50

SECTIONS	
	SCALE AS SHOWN
31/10/2017	SHEET 6

RevID	ChID	Revision	Date



2 Detail (10) 1:20



1 Detail (5) 1:10

CONSTRUCTION DETAILS	
	SCALE AS SHOWN
31/10/2017	SHEET 7

AS 91631 (3.34): Produce working drawings to communicate production details for a complex design (6 credits)

Achievement	Achievement with Merit	Achievement with Excellence
Produce working drawings to communicate production details for a complex design.	Produce working drawings to clearly communicate production details for a complex design.	Produce working drawings to effectively communicate production details for a complex design.
<ul style="list-style-type: none"> Produce a <u>set of related instrumental</u> working drawings showing <u>exterior and interior detail</u> of components <u>related</u> to the construction and assembly of a <u>complex</u> design. Demonstrate an ability to use <u>drawing conventions and presentation techniques</u> to communicate details of a complex design. 	<ul style="list-style-type: none"> Produce a <u>precise</u> set of related instrumental working drawings showing exterior and interior detail of components that explains the construction and assembly of a complex design. Demonstrate an ability to <u>accurately apply</u> drawing conventions and presentation techniques to clearly communicate details of a complex design. 	<ul style="list-style-type: none"> Produce a precise and <u>cohesive</u> set of related instrumental working drawings through the appropriate selection of views and modes that enable the construction and/or assembly of a complex design. Demonstrate an ability to to accurately apply drawing conventions and presentation techniques to clearly communicate <u>production</u> details of a complex design.

Commentary: This submission is assessed at Achievement.

It shows a set of related complex plans for a small dwelling and has been produced using CAD.

This includes (helping it meet this grade):

- precision and accuracy helped by the use of CAD
- a series of pictorial illustrative views to help visualise the design
- a fully dimensioned floor plan with north point symbol, room space information and correct use of labelling
- a set of corresponding elevations matching the north point orientation shown on the plan
- two sectional views which match the orientation shown on the plan.
- the correct use of drawing conventions such recognised scales, dimensioning and titling.
- two call-out details as indicated on the cross section.

This submission could have scored a higher grade with a better selection of details i.e. detail “2” does not show any valuable information at all. Perhaps a foundation/footing detail would have been better and would have meet the “clearly communicate details of a complex design” and the “explains the construction and assembly of a design” requirements.

Section AA could have shown more information if it had also been drawn to the same scale as BB i.e. 1:50

The labelling on the sectional view does not match those shown on the details.