



MĀORI QUALIFICATIONS SERVICES
NGĀ RATONGA TOHU MĀTAURANGA MĀORI

TĪKAROHIA TE MARAMA REALISE YOUR POTENTIAL

Assessment Support Material

TE ITI A TARANGA

Unit Standard 32182 (Version 1)

Demonstrate knowledge and expressions of pūkengatanga

Kaupae 3 | Credits 5

Ingoa Name	<input type="text"/>
Kura School	<input type="text"/>
Kaiwhakawā Assessor	<input type="text"/>
NSN Number	<input type="text"/>

~ Pukapuka Aromatawai ā te Ākonga



NEW ZEALAND QUALIFICATIONS AUTHORITY
MANA TOHU MĀTAURANGA O AOTEAROA

QUALIFY FOR THE FUTURE WORLD
KIA NOHO TAKATŪ KI TŌ ĀMUA AO!

Tēnā koe

This is your assessment booklet for Tikanga unit standard **32182 Demonstrate knowledge and expressions of pūkengatanga**.

This unit standard can be awarded with a Paetae/Achieved, Kaiaka/Merit, Kairangi/Excellence or Not Achieved/Kore i whiwhi grade.

Evidence for Paetae/Achieved

The following components should be included in the ākongā responses:

- description of pūkengatanga in terms of skills needed for a specific role or mahi,
- description of pūkengatanga in relation to the positive benefits for ākongā and whānau,
- expressions of pūkengatanga in accordance with tikanga and ngā kōrero tuku iho.

Evidence for Kaiaka/Merit

The following components should be included in the ākongā responses:

- in-depth knowledge of pūkengatanga,
- similarities and differences of skills with traditional Māori models in accordance with tikanga and ngā kōrero tuku iho.

Evidence for Kairangi/Excellence

The following components should be included in the ākongā responses:

- comprehensive knowledge of pūkengatanga,
- how expressed skills in specific context can positively impact self-care and whānau well-being (ā-tinana, ā-hinengaro, ā-wairua, ā-whatumanawa).

This assessment booklet contains Worksheets for you to complete the assessment tasks (Tūmahi). The worksheets are provided to assist you with gathering evidence to meet the requirements of the standard.

You are also required to visually record Tūmahi 2 on a device and provide relevant commentary or an explanation of the mahi required for the task. Your kaiako will need to complete the attestation form and checklist and submit alongside your evidence for the purposes of moderation.

Please aim to do more than what is required in this booklet, as this will ensure you have covered everything you need to do.

Kia ora mai anō.

Assessment Criteria

There are **TWO** tūmahi (assessment tasks) that you must complete correctly to gain the credits for this unit standard. You are required to:

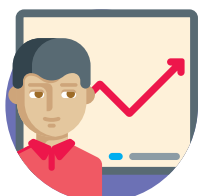
Ākonga are required to:



Read and research



Listen and answer questions



Research and present research to an audience



Prepare and present a speech



Compile and gather information

- Your kaiako will also discuss the length of time you have to complete these aromatawai.
- **PLEASE** remember to reference where you get your information from. Your kaiako will also discuss this with you.

Name

NSN #

Tūmahi 1

Worksheet 1

Outcome 1 - Demonstrate knowledge of pūkengatanga

Assessment Task 1 – this tūmahi assesses PC 1.1, 1.2

Select TWO specific roles or type of mahi and describe the necessary pūkenga or the right skills needed to get each job done.

- Range may include but is not limited to skills needed to contribute to a whānau event or occasion at home, the marae, within the hapū, community or part time mahi.
- Recording your mahi on your phone or device will help you with Tūmahi 2.

ROLE/MAHI 1

Describe how these skills can benefit yourself and your whānau.

Range may include but is not limited to sharing knowledge to build confidence and skill base within your whānau, encouraging self-development, getting mahi to support yourself and whānau.

ROLE/MAHI 2

Describe how these skills can benefit yourself and your whānau.

Range may include but is not limited to sharing knowledge to build confidence and skill base within your whānau, encouraging self-development, getting mahi to support yourself and whānau

Requirements for Kaiaka | Merit

Description includes identifying similarities and differences of expressed skills with traditional Māori models in accordance with tikanga and ngā kōrero tuku iho.

Requirements for Kairangi | Excellence

Description explains how expressed skills in specific context can positively impact self-care and whānau well-being (ā-tinana, ā-hinengaro, ā-wairua, ā-whatumanawa)

Tūmahi 2 Worksheet 1

Outcome 2 - Demonstrate expressions of pūkengatanga in accordance with tikanga and ngā kōrero tuku iho.

Assessment Task 2 – this tūmahi assesses PC 2.1, 2.2

Select ONE of the roles or type of mahi from Tūmahi 1 and demonstrate the necessary pūkenga needed to get the job done.

- Range may include but is not limited to the skills needed to contribute to a whānau event or occasion at home, the marae, within the hapū, community or part time mahi.
- A minimum of six pūkenga is required.
- Pūkenga are demonstrated in accordance with tikanga and ngā kōrero tuku iho.
- List at least 6 different skills needed for the required job and provide an explanation below or commentary where relevant.
- Don't forget to tick off the visual evidence as you collect it.

DEMONSTRATION OF PŪKENGATANGA	VISUAL EVIDENCE COLLECTED

Tūmahi 2 ▶ Assessor Checklist

Select a specific role or mahi and demonstrate the pūkenga needed to get each job done.

- Range may include but is not limited to skills needed to contribute to a whānau event or occasion at home, the marae, within the hapū, community or part time mahi
- A minimum of six pūkenga are required
- Your demonstration must be in accordance with tikanga and ngā kōrero tuku iho
- For the purposes of moderation, checklists and attestation forms are not enough evidence on their own; ākongā mahi must be visually recorded on a device and the recording submitted with the kaiako attestation.

	Ākongā	Assessor
Outcome 2 - Demonstrate expressions of pūkengatanga in accordance with tikanga and ngā kōrero tuku iho.	<i>Visual Evidence Collected</i>	<i>Visual Evidence Sighted & Submitted</i>
• Pūkenga are demonstrated accurately		
• At least six different pūkenga are demonstrated		
• Pūkenga are demonstrated in accordance with tikanga and ngā kōrero tuku iho		
• An explanation or relevant commentary is included where relevant		
Assessor Comments		
Assessor Signature		Date:

This task assesses the evidence required for Outcome 2 | Performance Criteria 2.1, 2.2

He kaupapa iti hei whakaaro mōu

A FEW THINGS FOR YOU TO THINK ABOUT

Referencing

This assessment requires the ākonga to reference his/her information. For the purposes of this assessment, the following are examples of reference styles.

EXAMPLES OF REFERENCING STYLES

1 **Book**

King, M. (2000). *Wrestling with the angel: A life of Janet Frame*. Auckland, New Zealand: Viking.

2 **Course handout/Lecture notes (electronic version)**

Archard, S., Merry, R., & Nicholson, C. (2011). Karakia and waiata [PowerPoint slides]. Retrieved from TEPS757-11B (NET): Communities of Learners website: <http://elearn.waikato.ac.nz/mod/resource/view.php?id=174650>.

3 **Film**

Māori Television (Producer). (2016). Iwi Anthems, Series 2 Episode 5 [video file]. Retrieved from: <http://www.maoritv.com/tv/shows/iwi-anthems/S02E005/iwi-anthems-series-2-episode-5>.

4 **Magazine/Newspaper article – popular/trade/general interest**

Fox, D. (2015, 15 September). Viewpoint: Not one more acre. *Mana*. Retrieved from: <http://www.mana.co.nz/heritage/viewpoint.html>.

5 **Personal Communication (letters, telephone conversations, emails, personal interviews, private social networking) – no reference list entry required (not recoverable); however, for quoting or citing in text**

J. Jackson, personal communication, March 12, 2011.

6 **Webpage**

New Zealand Trade and Enterprise. (n.d.). Agribusiness. Retrieved from <https://www.nzte.govt.nz/en/export/market-research/agribusiness/>.

Kaiako Assessment Schedule

Ākonga			
NSN			
Kaupapa	Tikanga - Tikanga Concepts	Level	3
Standard Number Version	32182 Version 1	Credits	5
Standard Title	Demonstrate knowledge and expressions of pūkengatanga		

Paetae Achieved	Kaiaka Merit	Kairangi Excellent
Demonstrate knowledge of pūkengatanga	Demonstrate in-depth knowledge of pūkengatanga	Demonstrate comprehensive knowledge of pūkengatanga

Tīpako	Paearu Mahi	Paetae ✓	Kaiaka ✓	Kairangi ✓
Demonstrate knowledge of pūkengatanga.	1.1 Pūkengatanga is described in terms of specific pūkenga required for the role or mahi selected. Evidence of two is required			
	1.2 Pūkengatanga is described in relation to the positive impacts for self and whānau well-being. Evidence of two is required			
Demonstrate expressions of pūkengatanga in accordance with tikanga and ngā kōrero tuku iho. A minimum of six pūkenga is required	2.1 Expressions of pūkengatanga are demonstrated accurately in terms of skills required for the specific role or mahi selected.			
	2.2 Expressions of pūkengatanga are demonstrated in accordance with tikanga and ngā kōrero tuku iho.			
Demonstrate in-depth knowledge of pūkengatanga Identify similarities and differences of expressed skills with traditional Māori models in accordance with tikanga and ngā kōrero tuku iho.				
Demonstrate comprehensive knowledge of pūkengatanga Explain how expressed skills in specific context can positively impact self-care and whānau well-being (ā-tinana, ā-hinengaro, ā-wairua, ā-whatumanawa)				

Sufficiency Statement				
Paetae	All Paetae must be ticked			
Kaiaka	All Paetae and Kaiaka must be ticked			
Kairangi	All Paetae, Kaiaka and Kairangi must be ticked			
Circle Overall Grade	Kāore anō	Paetae	Kaiaka	Kairangi
Kaiako Signature			Date:	