



TĪKAROHIA TE MARAMA REALISE YOUR POTENTIAL

Ngā Rauemi Aromatawai

TE ITI A TARANGA

Paerewa 32184 (Putanga 1)

Te whakaatu mōhio me te whakapuaki hoki i te rangatiratanga

Kaupae 3 | Whiwhinga 5



Ingoa	
Kura	
Kaiwhakawā	
Tau Ākonga (NSN)	

~ Pukapuka Aromatawai ā te Ākonga

Tēnā koe

Anei tō pukapuka aromatawai mō te Paerewa, **32184 Rangatiratanga: Te whakaatu mōhio me te whakapuaki hoki i te rangatiratanga**

Ko ngā taumata o te paerewa nei ko te Paetae, te Kaiaka, te Kairangi me te Kāore i whiwhi.

Paearu aromatawai - Paetae

Me taunaki mai ngā whakautu a te ākonga i ngā āhuatanga e whai ake nei:

- he whakaaturanga a ngā āhuatanga o te rangatiratanga e ai ki te oranga ā-tinana, ā-wairua, ā-hinengaro o te whānau
- he whakaaturanga o te rangatiratanga e ai ki ngā mahi hāpai i te oranga ā-tinana, ā-wairua, ā-hinengaro o te whānau
- he whakapuaki i te rangatiratanga o te nohoanga ā-whānau
- he whakapuaki i te rangatiratanga e whakatinana ana i ngā pūkenga pāhekoheko whāiti me ngā mōhioatanga e hāngai nei ki te horopaki.

Paearu aromatawai - Kaiaka

Me taunaki mai ngā whakautu a te ākonga i ngā āhuatanga e whai ake nei:

- he hōhonu te whakaatu mōhio i te rangatiratanga
- he whakataurite, he whakatairite hoki i ngā āhuatanga o te rangatiratanga kei ngā tauira Māori tawhito, e ai ki te reo, ki ngā tikanga, ki te kawa anō hoki.

Paearu aromatawai - Kairangi

Me taunaki mai ngā whakautu a te ākonga i ngā āhuatanga e whai ake nei:

- he matawhānui te whakaatu mōhio i te rangatiratanga
- he whakatairite i ngā whakapānga o te rangatiratanga ki te oranga ā-tinana, ā-wairua, ā-hinengaro o te whānau kei ngā tauira Māori tawhito e hāngai nei ki ngā korero tuku iho.

He pukapuka aromatawai tēnei me āna pepa mahi hei whakaoti i ngā tūmahi aromatawai. E takoto ana ngā pepa mahi hei āwhina ki te whai taunaki e tutuki pai ai hoki ngā ture o te paerewa.

Kia kaha ki te whakaoti tika i ngā mahi o te pukapuka nei kia tutuki pai ai āu mahi katoa mō te paerewa nei.

Kia ora mai anō.

Paearu Aromatawai

Me whakaoti tika i a koe ngā tūmahi aromatawai e RUA kia whai whiwhinga mō te paerewa nei.

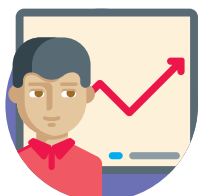
Me whakapau kaha hoki koe ki te :



PĀNUI me te rangahau



WHAKARONGO me te tuku pātai



WHAKARITE MAHI me te tuhi kōrero



WHAKARĀRANGI me te whakaemi kōrero tautoko



HOPU MAHI me te whakaatu ki tō kaiako

- Mā tō kaiako koe e tohutohu ai mō te roanga o te wā hei whakaoti i a koe ēnei tūmahi aromatawai katoa.
- **KIA MAUMAHARA** ki te whakarite rārangi tohutoro hei puna kōrero tautoko. Mā tō kaiako anō ēnei whakamārama e kōrero atu ki a koe.

Ingoa

Tau Ākonga (NSN)

Tūmahi 1 Pepa Mahi 1

Putanga 1 – Te whakaatu mōhio i te rangatiratanga.

Tūmahi aromatawai 1 – ka arotakengia te 1.1, 1.2

Me whakaahua mai ngā āhuatanga o te rangatiratanga e RUA e ai ki ngā mahi hāpai i te oranga ā-tinana, ā-wairua, ā-hinengaro o te whānau

Me whakamārama mai i ngā āhuatanga o te rangatiratanga e RUA e hāpai nei i te oranga ā-tinana, ā-wairua, ā-hinengaro o te whānau e ai ki ngā tikanga a te mana whenua.

Ko ngā āhuatanga pēnei i te ngākau mahaki, ngākau tapatahi, kanohi kai mātārae, ngākau pono, te whakawhanaungatanga me te kōtuitui.

Me taunaki mai i ngā āhuatanga e RUA.

Ko te hāpai i te oranga ā-whānau, ā-tinana, ā-hinengaro e ai ki te kapa haka, te hākinakina, te hui ahurei, te hui ahurei ā-whānau/ ā-hapū/ā-iwi hui, te wānanga, te pakihi, te hui taurima, te whakanui tangata/tāngata, tangihana

Me taunaki mai i ngā taura e RUA.

**E RUA NGĀ ĀHUATANGA O TE RANGATIRATANGA:
 E RUA NGĀ TAUIRA E WHAKAPUAKI ANA I TE RANGATIRATANGA:**



Ka arotake tēnei tūmahi i ngā taunakitanga mō te Putanga 1 | Paearu aromatawai 1.1, 1.2

Paearu aromatawai | Kaiaka

He whakaaturanga e tautohu ana, e whakatairite ana i ngā pūkenga whāiti nō roto mai i ngā tauira Māori tawhito e ai ki ngā tikanga me ngā kōrero tuku iho.

Paearu aromatawai | Kairangi

He whakaaturanga i te painga o ngā pūkenga whakapuaki e tautoko ai i te tiaki whaiaro me te oranga ā-tinana, ā-wairua, ā-hinengaro o te whānau.

Tūmahi 2

Pepa Mahi 2

Putanga 2 – He whakaatu whakapuaki o te rangatiratanga e ai ki te reo me ngā tikanga a te tangata whenua

Me whakapuaki mai ngā āhuatanga e RUA o te rangatiratanga i te nohonga ā-whānau e whakatinana ana i ngā pūkenga pāhekoheko me ngā mōhiotanga hoki o te kaupapa, o te horopaki rānei e ai ki te reo me ngā tikanga a te tangata whenua.

Ngā āhuatanga pēnei i te ngākau māhaki, te ngākau tapatahi, te kanohi kai mātārae, te ngākau pono, te whakawhanaungatanga, te kōtuitui

NGĀ ĀHUATANGA

Tūmahi 1 ▶ Te rārangi mahi a te ākonga

Me kōwhiri, ā, me whakamārama mai i ngā āhuatanga whāiti e RUA o te rangatiratanga ka whakamahia koe me tō whānau kia hāpai tonu i te oranga tonutanga (ā-tinana, ā-wairua, ā-hinengaro) o te whānau.

- Te whānui – te ngākau māhaki, te ngākau tapatahi, te kanohi kai mātārae, te ngākau pono, te whakawhanaungatanga me te kōtuitui
- Me taunaki mai i ngā āhuatanga e RUA
- Me hāngai pū tō whakamārama ki ngā tikanga a te tangata whenua
- Me tuhi whakamārama te ākonga mō ia āhuatanga, he takinga kōrero rānei e tautoko ana i te taunakitanga reo ā-ataata.

Me whakamārama mai i te rangatiratanga e ai ki te hāpai tonu i te oranga tonutanga (ā-tinana, ā-wairua, ā-hinengaro) o te whānau.

- Te whānui – te kapa haka, te hakinakina, te hui ahurei, te hui ā-whānau, ā-hapū, ā-iwi. te wananga, te hui taurima, te hui ā-hāhi me te whakanui tangata
- Me taunaki mai i ngā tauira e RUA
- Me tuhi whakamāramatanga poto te ākonga, he takinga kōrero rānei e tautoko ana i te taunakitanga reo ā-ataata.

	Ākonga	Kaiaromātai
Putanga 2 – Te whakapuaki i te rangatiratanga e ai ki te reo me ngā tikanga a te tangata whenua	<i>Kua tutuki te reo ā-ataata</i>	<i>Kua tutuki, kua whakatūturu te reo ā-ataata</i>
• He tika te whakaatu i ngā whakapuaki o te rangatiratanga		
• E whakaatu ana i ngā whakapuaki e rua o te rangatiratanga.		
• E whakaatu tika ana ngā āhuatanga o te rangatiratanga e ai ki te reo me ngā tikanga.		
• E tohu tika ana ngā whakapuaki o te rangatiratanga i te hiranga o te pāhekoheko whāiti, ngā pūkenga me ngā mōhiotanga e ai ki te kaupapa, ki te horopaki rānei.		
He kōrero tāpiri a te kaiaromātai		
Waitohu Kaiaromātai		Te Rā

Te rārangi aromatawai a te Kaiaromātai

Ākongā			
Tau Ākongā			
Kaupapa	Tikanga – Ariā Tikanga	Kaupae	3
Nama Putanga	32184 Putanga 1	Whiwhinga	5
Paerewa	Te whakaatu mōhio me te whakapuaki i te rangatiratanga		

Paetae	Kaiaka	Kairangi
He whakaatu mōhio me te whakapuaki i te rangatiratanga	He hōhonu te whakaatu mōhio me te whakapuaki i te rangatiratanga	He matawhānui te whakaatu mōhio me te whakapuaki i te rangatiratanga

Tipako	Paearu Mahi	Paetae ✓	Kaiaka ✓	Kairangi ✓
He whakaatu mōhio i te rangatiratanga	1.1 He whakaahua i ngā āhuatanga o te rangatiratanga e ai ki ngā mahi hāpai i te oranga ā-tinana, ā-wairua, ā-hinengaro o te whānau Me taunaki mai i ngā āhuatanga e RUA			
	1.2 He whakamārama i te rangatiratanga e ai ki te hāpai i te oranga ā-tinana, ā-wairua, ā-hinengaro o te whānau. Me taunaki mai i ngā āhuatanga e RUA			
He whakapuaki i te rangatiratanga e ai ki te reo me ngā tikanga.	2.1 He whakaatu i ngā whakapuaki o te rangatiratanga i te nohonga ā-whānau. Me taunaki mai i ngā whakapuaki e RUA			
	2.2 Ko ngā whakapuaki o te rangatiratanga e tohu ana i te hiranga o te pāhekoheko whāiti, ngā pūkenga me ngā mōhiotanga rānei e ai ki te kaupapa, ki te horopaki hoki.			
He hōhonu te whakaatu mōhio i te rangatiratanga. E tautohu ana, e whakatairite ana i ngā āhuatanga o te rangatiratanga a ngā taurira Māori tawhito e ai ki te reo, ki te tikanga, ki te kawa anō hoki.				
He matawhānui te whakaatu mōhio i te rangatiratanga. E whakatairite ana i te pānga mai o te rangatiratanga ki te oranga ā-tinana, ā-wairua, ā-hinengaro o te whānau me ngā taurira Māori tawhito hoki e ai ki ngā kōrero tuku iho.				

Te tauākī aromatawai				
Paetae	Kua tutuki			
Kaiaka	Kua tutuki te taumata Paetae me te taumata Kaiaka			
Kairangi	Kua tutuki ngā taumata katoa (Paetae, Kaiaka, Kairangi)			
Porowhitangia te taumata tika	Kāore anō	Paetae	Kaiaka	Kairangi
Waitohu:		Te Rā:		

He Pitopito Kōrero: