

Te Hono o Te Kahurangi quality



Six dynamic and interconnected kaupapa are at the heart of Te Hono o Te Kahurangi. They are a point of reference for education organisation and evaluators to guide their practice. They are about:

- what quality looks like in the educational context of the organisation;
- how the organisation knows they are meeting the needs of their stakeholders and their accountabilities;

- whether the organisation has sufficient capacity and capability to
- how well the organisation reflects upon its delivery to improve it

Te Hono o te Kahurangi guidelines and processes

The Te Hono o Te Kahurangi guidelines were implemented in 2017. The following are the key processes:

Qualification development and listing

Approve a qualification for development

The decision to approve a new qualification for development is made by an NZQA board.

Kua tutuki ngā kaupapa o Te Hono o Te Kahurangi i te tohu nei?

NZQA reviews the information and evidence provided with the application. If the information required, NZQA will contact the applicant directly.

Ngā paearu: Criteria for rating answers to the pātai arotake for approval

Te Taumata	Ngā Taunaki
He pounamu kahurangi	<p>ALL of the following:</p> <p>The qualification is developed in consultation with the relevant industry, hapū, iwi, and other stakeholders. The application includes evidence supporting the need for the qualification.</p> <p>The qualification is developed in accordance with the Te Hono o Te Kahurangi guidelines.</p>

<p>He pounamu</p>	<p>There are no application.</p> <p>ANY of the following:</p> <p>The nature, quality, or content of the qualification is not demonstrated to be relevant to the needs of hapū, iwi, and other stakeholders and the applicant's qualification is not of a standard that meets the requirements of the Qualification Act 2012.</p> <p>The qualification is not a New Zealand Qualification Authority qualification.</p> <p>There are significant concerns about the application.</p>
--------------------------	---

Approve a qualification for listing on the New Zealand Qualifications Register

The decision to list the qualification is made by answering the following pātai:

Kua tutuki ngā kaupapa o Te Hono o Te Kahurangi i te whare ako nei

NZQA reviews the details of the qualification provided with the application. We will contact the applicant directly.

Ngā paearu: Criteria for rating answers to the pātai arotake to list

Te Taumata	Ngā Taunaki
<p>He pounamu kahurangi</p>	<p>ALL of the following:</p> <p>The qualification is not a New Zealand Qualification Authority qualification.</p> <p>The qualification is not a New Zealand Qualification Authority qualification.</p> <p>There are no significant concerns about the qualification details.</p>

He pounamu

ANY of the following

The qualification is on the Register of Qualifications for the Hono o Te Kahurangi

The qualification is on the Register of Qualifications for New Zealand Qualifications

There are significant differences between the qualification details

For more information see the [Guidelines for Te Hono o Te Kahurangi evaluation](#)

The application must meet criteria set out in and use the terminology of the [Rules 2016](#).

Programme approval and accreditation

Approve a programme

The decision to approve a new programme is made by answering the following question:

Kua tutuki ngā kaupapa o Te Hono o Te Kahurangi i te hōtaka nei?

NZQA reviews the details of the qualification provided with the application. We will contact the applicant directly.

Ngā paearu: Criteria for rating answers to the pātai arotake to approve a THoTK qualification on the NZQF

Te Taumata

He pounamu kahurangi

Ngā Taunaki

ALL of the following

The learning outcomes of the qualification are on the Register of Qualifications for the Hono o Te Kahurangi

The programme
and where ap
qualification ou

The programme
Kahurangi.

The programme
structured in a
outcomes and

No significant g
ANY of the foll

The nature, qu
not convincin
of the program

Insufficient ev
kaupapa o Te H

Insufficient ev
and, where ap
qualification ou

Insufficient evi
programme are
the qualificatio
of learners.

Significant gap

He pounamu

Accredit an education organisation to deliver an approved prog

Except where NZQA otherwise requires, a Category 1 institution applying for accreditation must submit a self-reflective practice report addressing the pātai arotake for accreditation.

The decision to accredit an education organisation (whare ako) is made by a

Kua tutuki ngā kaupapa o Te Hono o Te Kahurangi i te whare ako ne

NZQA reviews the details of the qualification provided with the application. V will contact the applicant directly.

**Ngā paearu: Criteria for rating answers to the pātai arotake to accre
a THoTK programme leading to a NZQF approved qualification**

Te Taumata	Ngā Taunaki
He pounamu kahurangi	ALL of the follo The organisat capacity to sup through approp educational and The organisat capacity to en are fair, valid, c The organisatio performance o capability to su where required owners. No significant practice, and/o the organisatio
He pounamu	ANY of the follo The nature, qu not reflect tha capacity to en are fair, valid, c The nature, qu not reflect tha capacity to sup

through appropriate
educational and

The nature, quality
not reflect the
self-reflects the
the institution
programme; for
owners.

Significant gaps
and/or the un
organisation.

For more information see the [Guidelines for Te Hono o Te Kahurangi evaluation](#)

The application must meet criteria set out in the [NZQF Programme Approval](#)

Applications from Legislated Wānanga

Approve a new Legislated Wānanga qualification for development

Written verification from Te Tau Ihu o Ngā Wānanga confirming that the title and
the Legislated Wānanga and NZQA criteria is required at the time of submission

Submitted Legislated Wānanga qualification details must meet the listing requirements
[Qualifications Listing and Operational Rules 2016](#). See the [Legislated Wānanga
73KB](#)).

The decision to approve a Legislated Wānanga qualification is made by answering

Kua tutuki ngā kaupapa o Te Hono o Te Kahurangi i te tohu nei?

NZQA reviews the information and evidence provided with the application. If the information
required, NZQA will contact the applicant directly.

Ngā paearu - Criteria for rating answers to the pātai arotake for application qualification

Te Taumata	Ngā Taunaki
He pounamu kahurangi	<p>ALL of the following:</p> <p>The qualification is relevant to the community, hapū, iwi, whānau, and stakeholders and has evidence supporting its value.</p> <p>The qualification is consistent with the Kahurangi.</p> <p>There are no other applications.</p>
He pounamu	<p>ANY of the following:</p> <p>The nature, quality, or quantity of the qualification does not demonstrate a need for the qualification, iwi, and where there is a need for the qualification.</p> <p>The qualification is not consistent with the Kahurangi.</p> <p>There are significant other applications.</p>

Approve the listing of a Legislated Wānanga qualification on the NZQF

The decision to approve the listing of a Legislated Wānanga qualification is made by the Minister of Education. The Minister will contact the applicant directly.

Kua tutuki ngā kaupapa o Te Hono o Te Kahurangi i te Whare Wānanga

NZQA reviews the details of the qualification provided with the application. The Minister of Education will contact the applicant directly.

Ngā paearu - Criteria for rating answers to the pātai arotake to list qualifications on the NZQF

Te Taumata	Ngā Taunaki
He pounamu kahurangi	<p>ALL of the following</p> <p>The qualification must be a Level 7 qualification</p> <p>The qualification must be a Level 7 qualification in the field of the qualification</p> <p>The qualification must be a Level 7 qualification in the field of the qualification</p> <p>There are no other qualifications in the field of the qualification</p>
He pounamu	<p>ANY of the following</p> <p>The qualification must be a Level 7 qualification</p> <p>The qualification must be a Level 7 qualification in the field of the qualification</p> <p>The qualification must be a Level 7 qualification in the field of the qualification</p> <p>There are significant qualifications in the field of the qualification</p>

Approve a Legislated Wānanga programme

The application must meet criteria set out in the NZQF Programme Approval Process

The decision to approve a Legislated Wānanga programme leading to a Level 7 qualification will be based on the following pātai arotake:

Kua tutuki ngā kaupapa o Te Hono o Te Kahurangi i te hōtaka nei?

NZQA reviews the details of the qualification provided with the application. NZQA will contact the applicant directly.

Ngā paearu - Criteria for rating answers to the pātai arotake to approve a Legislated Wānanga qualification listed on the NZQF

Te Taumata
He pounamu kahurangi

Ngā Taunaki

ALL of the follow

The programme
requirements o

The programme
and where ap
qualification ou

The programme
Kahurangi.

The programme
structured in a
outcomes and

No significant g

He pounamu

ANY of followin

The nature, q
does not convi
matches the st
qualification.

Insufficient ev
kaupapa o Te H

Insufficient ev
and, where ap
qualification ou

Insufficient ev
programme are
the qualificatio

Significant gap

Accredit a Legislated Wānanga to deliver an approved programme

The application must meet criteria set out in the NZQF Programme Approval

The decision to accredit a Legislated Wānanga is made by answering the fo

Kua tutuki ngā kaupapa o Te Kahurangi i te Whare Wānanga nei?

NZQA reviews the details of the qualification provided with the application. V
will contact the applicant directly.

Ngā paearu - Criteria for rating answers to the pātai arotake to acc a Legislated Wānanga programme leading to a Legislated Wānanga

Te Taumata	Ngā Taunaki
He pounamu kahurangi	ALL of the follo The organisat capacity to sup through approp educational and The organisat capacity to en are fair, valid, outcomes relat The organisatio performance o capability to su No significant practice, and/o the organisatio
He pounamu	ANY of the follo The nature, qu not reflect tha capacity to en are fair, valid,

outcomes do not meet the criteria for Kahurangi.

The nature, quality and quantity of evidence do not reflect the institution's capacity to support learning through appropriate educational and assessment practices.

The nature, quality and quantity of evidence do not self-reflect on the institution's performance and the institution's ability to support the programme.

Significant gaps in evidence and/or the university organisation.

For more information see the [Guidelines for Te Hono o Te Kahurangi evaluation](#)

External evaluation and review

The intent of the review should meet the Te Hono o Te Kahurangi criteria in the [Evaluation and Review \(EER\) Rules 2016](#).

The decision to rate and finalise a statement of confidence is made by answering the following questions:

Ka pēhea tā koutou whakapuaki i te kaupapa, ā, ka pēhea koutou e whakapuaki i te kaupapa?

Ngā paearu: Criteria for rating answers to pātai arotake for educational practice

Ngā Hua o te Whare Ako

(Education Performance)

Pounamu Kahurangi

ALL of the following:

Te Whakairangi

(Self Reflective)

Pounamu Kahurangi

ALL of the following:

Kaupapa are clearly exemplary and imbue performance in nearly all levels of the organisation, or the focus area

Very few or no gaps or weaknesses

Any gaps or weaknesses have no significant impact and are managed effectively.

Kaupapa are clearly self-reflective understanding of the area, and to bring improvements

Clear and comprehensive

Any gaps or weaknesses are managed effectively

Self-reflective and comprehensive understanding of the focus area.

Pounamu Whakairo

ALL of the following:

Kaupapa are generally strong and imbue performance across most levels of the organisation or the focus area

Few gaps or weaknesses

Gaps or weaknesses have some impact but are mostly managed effectively.

Pounamu Whakairo

ALL of the following:

Kaupapa are generally strong and imbue performance, and are worth while improvements

Good evidence

Any gaps or weaknesses are managed effectively

Self-reflective and coherent understanding of the organisation or focus area

Pounamu Hukihuki

ALL of the following:

Kaupapa are inconsistent across most levels of the organisation or the focus area

Some gaps or weaknesses have impact, and are not managed effectively

Pounamu Hukihuki

ALL of the following:

Kaupapa are generally weak and do not understand the area and bring little or no improvements

Limited or little evidence

Meets minimum expectations/requirements as far as can be determined	Some significant practice, which Self-reflective comprehensive focus area.
He pounamu	He pounamu
ANY ONE of the following:	ANY ONE of the following:
Kaupapa are unacceptably weak and not evident at all levels of organisation or the focus area	Kaupapa are weaknesses at
Significant gaps or weaknesses are not managed effectively	Little or no evidence Weaknesses in
Does not meet minimum expectations/requirements.	significant improvement

NZQA also uses [Tertiary Evaluation Indicators](#) to make evaluative judgements of a tertiary organisation.

For more information see the [Guidelines for Te Hono o Te Kahurangi evaluation](#)

Assuring national consistency

The quality assurance process is used to assure national consistency of qualifications listed on the NZQF at levels 1-6.

The process for assuring national consistency of graduate outcomes was developed for qualifications and the underlying knowledge, skills and attributes that graduate

NZQA has specific [guidelines](#) for assuring the national consistency of qualifications or programmes quality assured through the Te Hono o Te Kahurangi

Consistency of graduate outcomes for individual education organisations

Each education organisation must be able to demonstrate with quality, demonstrate the graduate outcomes of the qualification.

This is determined by answering the following pātai arotake:

Mā te āta whakaputa i te kaupapa, me pēhea e tutuki pai ai te whare ako e taurite anō ai te taumata tika o ngā whāinga putanga.

The conclusion, based on the answer to the pātai arotake, is a judgement reflecting evidence the education organisation uses to demonstrate how well

Ngā paearu: Performance criteria for rating the answer to the pātai arotake for all organisations

Te Whakairinga Kōrero	Performance
<p>He pounamu kahurangi (Self-reflection and supporting evidence is sufficient to demonstrate consistency of graduate outcomes)</p>	<p>ALL of the following criteria are met: Effective self-reflection and supporting evidence (as defined above) demonstrating consistency of graduate outcomes of the education organisation. Sufficient self-reflection and supporting evidence from the education organisation to ensure their graduate outcomes are consistent with the nature, quality and quantity of the education organisation's offerings, meeting the graduate outcomes of the qualification. Any areas of weakness identified are not serious and have been improved.</p>
<p>He Pounamu When ANY of the above are not met, the self-reflection and supporting evidence is insufficient to demonstrate consistency of graduate outcomes</p>	

The critical outcomes are determined during the assuring consistency process. The essential evidence is defined by the accepted 'threshold statement' for the qualification. The essential evidence is defined by the specific 'threshold statement'.

Consistency of graduate outcome across education organisations

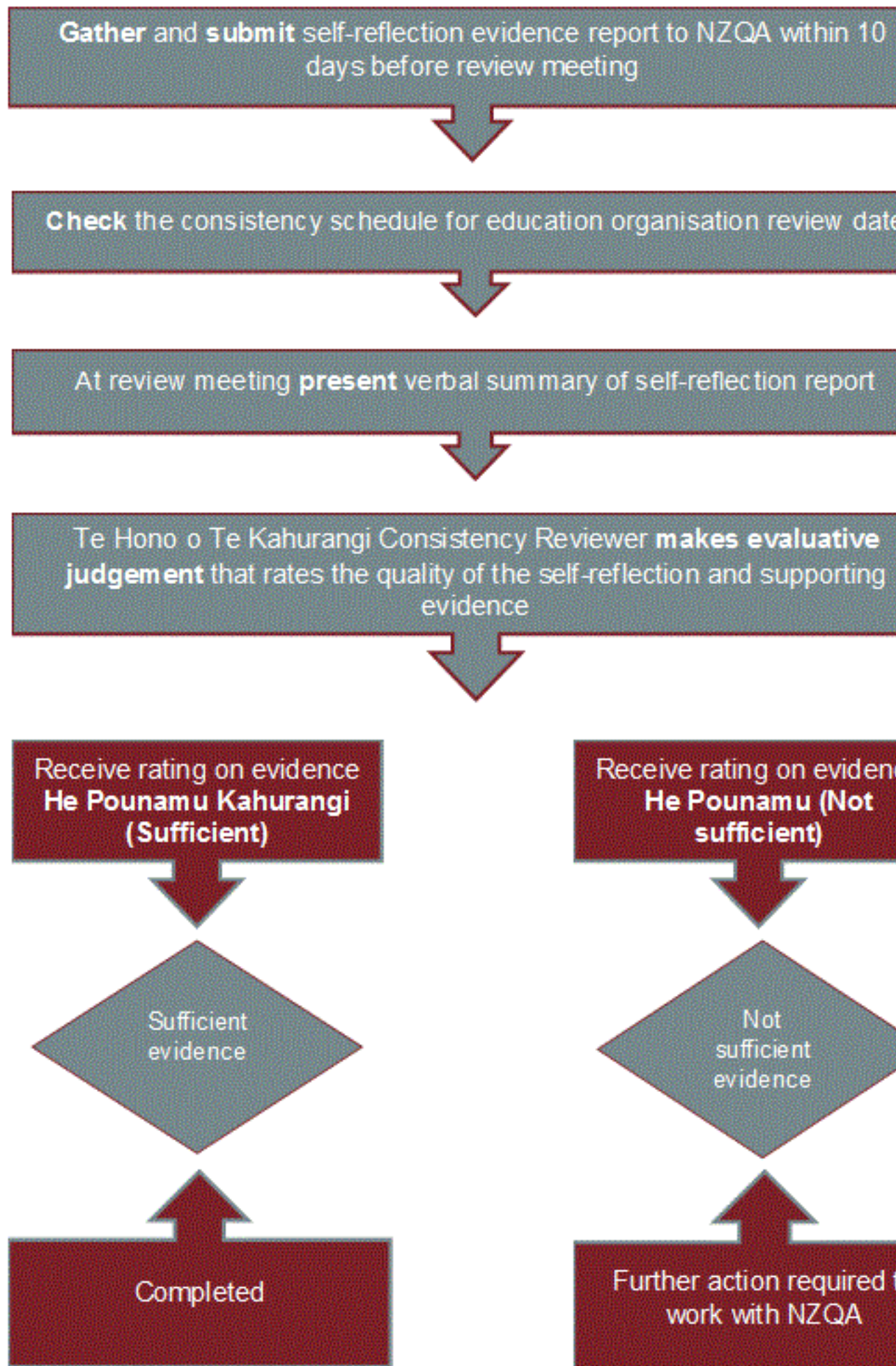
The decision on the national consistency of graduates of the qualification is based on the pātai arotake answered for each education organisation participating in the process.

The performance criteria for reaching a conclusion about the national consistency of graduates are set out in the following paearu:

Ngā paearu: Criteria for judgements about the national consistency of graduates across all education organisations providing relevant programmes

	Performance criteria
<hr/> National consistency confirmed	ALL of the following criteria must be met:
Self-reflection and supporting evidence confirms graduate outcomes are being achieved to a consistent and appropriate threshold	Sufficient confidence in the consistency of graduate outcomes across all education organisations providing relevant programmes
	Sufficient self-reflection and supporting evidence from all education organisations participating in the process to confirm their graduates are achieving the intended outcomes
	The nature, quality and consistency of the evidence provides sufficient confidence in the consistency of graduate outcomes across all education organisations providing relevant programmes
	Areas of weakness are identified and effectively managed
<hr/> National consistency not confirmed	
When ANY of the above are not evident, the qualification may be judged as not nationally consistent if self-reflection or evidence indicates significant questions about the consistency of graduate outcomes	

The process for assuring national consistency of graduate outcomes



Registration of a private training establishment

The application must meet criteria set out in the [Private Training Establishment](#)

The decision to approve the registration of a private training establishment is arotake:

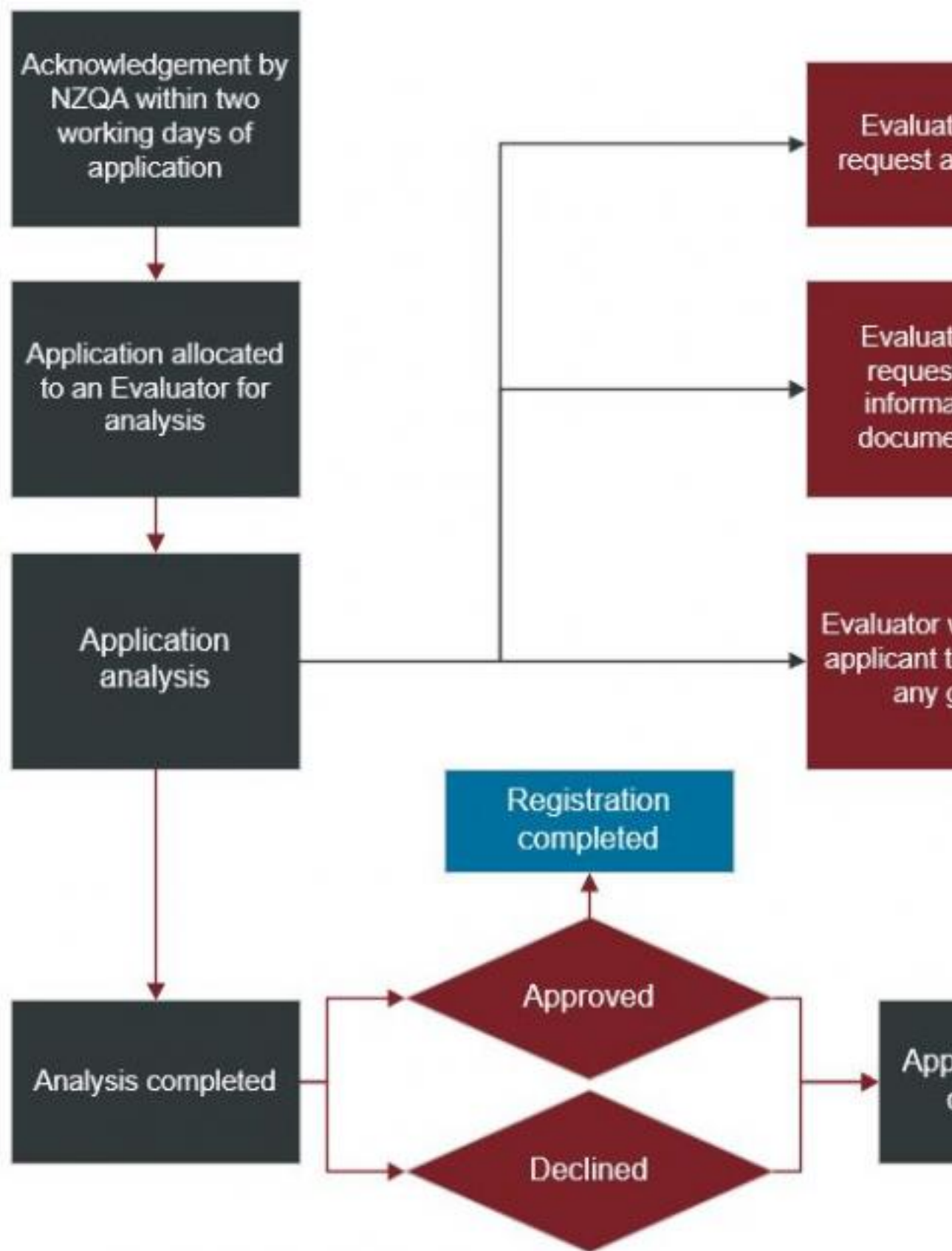
Kua tutuki ngā kaupapa o Te Hono o Te Kahurangi i te tono nei?

Where further information is required, NZQA will contact the applicant directly.

Ngā paearu: Criteria for rating answers to the pātai arotake to register

Te Taumata	Ngā Taunaki
He pounamu kahurangi	ALL of the following: The application meets the requirements of the Private Training Establishment Act 2003. The application meets the requirements of the Private Training Establishment Regulations 2003. No significant gaps in the information provided. The nature, quality and quantity of the information provided fully reflect the requirements of the Act and Regulations.
He pounamu	ANY of the following: The nature, quality and quantity of the information provided do not reflect the requirements of the Act and Regulations. The nature, quality and quantity of the information provided do not reflect that of a private training establishment registered with Te Hono o Te Kahurangi. Significant gaps in the information provided, and/or underlying information about the organisation.

Process for PTE registration



For more information see the [Guidelines for Te Hono o Te Kahurangi evaluation](#)

Assessment standards and consent to assess

Approve the listing of assessment standards

The application must meet criteria set out in the [Directory of Assessment Standards](#)

The decision to approve the listing of assessment standards is made by an assessor

Kua tutuki ngā kaupapa o Te Hono o Te Kahurangi i ngā paerewa ne

Where further information is required, NZQA will contact the applicant directly

Ngā paearu: Criteria for rating answers to the pātai arotake to assessment standards

Te Taumata	Ngā Taunaki
He pounamu kahurangi	ALL of the following The application meets the requirements of the standards listed in the Directory of Assessment Standards. The application meets the requirements of the standards listed in the Directory of Assessment Standards. No significant gaps between the application and the standards listed in the Directory of Assessment Standards.
He pounamu	ANY of the following The nature, quality or quantity of the application does not reflect the requirements of the standards listed in the Directory of Assessment Standards. The nature, quality or quantity of the application does not reflect that of the standards listed in the Directory of Assessment Standards. Te Hono o Te Kahurangi will not assess the application. Significant gaps between the application and the standards listed in the Directory of Assessment Standards.

Consent to assess against assessment standards

The application must meet criteria set out in the [Consent to Assess against Standards Rules 2011](#).

The decision to approve consent to assess against standards on the Director's behalf is made by answering the following pātai arotake:

Kua tutuki ngā kaupapa o Te Hono o Te Kahurangi i te tono nei?

Where further information is required, NZQA will contact the applicant directly.

Ngā paearu: Criteria for rating answers to the pātai arotake for consent to assess against standards

Te Taumata	Ngā Taunaki
He pounamu kahurangi	ALL of the following: The application meets the standards of the Kahurangi. The application meets the standards of the Kahurangi. No significant gaps in practice reported in the resources of the application.
He pounamu	ANY of the following: Insufficient evidence that the organisation has met the standards of the Kahurangi moderation requirements. The standards of the Kahurangi are not met in the application. Insufficient evidence that the organisation can manage the standards of the Kahurangi consent and moderation requirements.

The application
o Te Kahurangi

Significant gap
report and/or t
the organisatio

For more information see the [Guidelines for Te Hono o Te Kahurangi evaluat](#)

Training schemes and micro-credentials

Approve a training scheme

A training scheme can be at any NZQF level and can provide a range of acad
The scheme can lead to an award but does not, of itself, lead to a qualificat
Framework.

The application should meet the criteria set out in the [Training Scheme Ru](#)

The decision to approve the training scheme is made by answering the follo

Kua tutuki ngā kaupapa o Te Hono o Te Kahurangi i te kōwae mahi

NZQA reviews the details of the training scheme provided with the applica
NZQA will contact the applicant directly.

Ngā Paearu: Criteria for rating answers to the pātai arotake to app scheme

Te Taumata

He pounamu kahurangi

Ngā Taunaki

ALL of the follo

The training so
structured in
outcomes and

The training sc
and where app
learning outcom

The training sc
Te Kahurangi.

The organisat
capacity to su
scheme.

The organisati
on the perform
organisation's
scheme where

No significant g
ANY of the foll

The nature, q
and evidence
the training sc
structured in
outcomes and

Insufficient evi
ngā kaupapa o

Insufficient evi
capability and
the training sch

Significant gap
practice repor
support and im
sub-contractors

He pounamu

Approval, accreditation and monitoring of degrees

Approve a degree or related qualification

The decision to approve a degree or related qualification for listing on the Register of Qualifications is made by meeting the criteria as expressed through the pātai arotake, by answering the following pātai arotake:

Kua tutuki ngā kaupapa o Te Hono o Te Kahurangi i te tono nei?

The application should meet criteria set out in part 4 of the NZQF Qualification Approval and Accreditation Rules 2018. NZQA reviews applications in the application.

Ngā tūtohu taurite for Level 7-10 qualifications utilise the New Zealand Qualification Approval and Accreditation criteria with some minor amendments to ensure the advancement of Mātauranga Māori, whilst also maintaining quality consistency in the sector.

Ngā paearu (below) sets out the expected level of performance in relation to the pātai arotake.

Ngā Paearu: Criteria for rating answers to the pātai arotake to list qualifications

Te Taumata	Ngā Taunaki
He pounamu kahurangi	ALL of the following: Good evidence that there is a programme. Good evidence the qualification meet the evidence.
He pounamu	ANY of the following: No significant good evidence Insufficient evidence and programme.

Insufficient evidence
programme purposes
need.

Significant gaps

Accredit an education organisation to deliver a degree or related programme

The decision to accredit a TEO is made by meeting the criteria as expressed in the Te Kahurangi Act 2011 and by answering the following pātai arotake:

Kua tutuki ngā kaupapa o Te Hono o Te Kahurangi i te whare ako nei

NZQA reviews the information and the evidence using ngā paearu. Ngā paearu are used to assess the TEO's performance in relation to the pātai arotake.

Ngā Paearu: Criteria for rating answers to the pātai arotake to provide an approved programme

Te Taumata

He pounamu kahurangi

Ngā Taunaki

ALL of the following

Good evidence that the education organisation has sufficient resources to provide the programme

Good evidence that the education organisation has sufficient resources to provide any specific programme

Good evidence of formal arrangements for the programme if this is required

Good evidence of research (research) that

<p>He pounamu</p>	<p>No significant practice reports or resources of the</p> <p>ANY of the following</p> <p>Insufficient evidence of the capability and</p> <p>Insufficient evidence that can manage to meet requirements.</p> <p>Formal arrangements for these are required of the programme</p> <p>Insufficient evidence of rangahau (research)</p> <p>Significant gaps in practice reports or resources of the</p>
--------------------------	--

Monitoring delivery outcomes of qualifications at level 7-10

Under the NZQF Programme Approval and Accreditation 2018 rules, an education provider must conduct a monitoring visit to ensure sufficiency and capability to maintain ongoing delivery of an approved programme or part of an approved programme at levels 7-10.

On-site enquiry will be guided by the following pātai arotake:

Kua tutuki ngā kaupapa o Te Hono o Te Kahurangi i te hōtaka nei?

Ngā paearu: Criteria for rating answers to the pātai arotake to mai

<p>Ngā Hua o te Hōtaka</p> <p>(Programme Performance)</p> <p>Pounamu Kahurangi</p>	<p>Te Whakairinga</p> <p>(Self Reflective)</p> <p>Pounamu Kahurangi</p>
---	--

ALL of the following:

Kaupapa are clearly exemplary and imbue performance in nearly all levels of the programme.

Very few or no gaps or weaknesses.

Any gaps or weaknesses have no significant impact and are managed effectively.

ALL of the follo

Kaupapa are cle
self-reflective
understanding
about wide ran

Clear and c
outcomes.

Any gaps or we
effectively.

Self-reflective p
comprehensive
focus area.

Pounamu Whakairo

ALL of the following:

Kaupapa are generally strong and imbue performance across most levels of the programme.

Few gaps or weaknesses.

Gaps or weaknesses have some impact but are mostly managed effectively.

Pounamu Wh

ALL of the follo

Kaupapa are g
reflective prac
used to bring a

Good evidence

Any gaps or w
managed effec

Self-reflective
reasonably coh
the programme

Pounamu Hukihuki

ALL of the following:

Kaupapa are inconsistent across most levels of the programme.

Some gaps or weaknesses have impact, and are not managed effectively.

Pounamu Huk

ALL of the follo

Kaupapa are of
to understand
improvements.

Limited or little

Meets minimum expectations/requirements as far as can be determined.	Some significant practice, which Self-reflective comprehensive
He pounamu	He pounamu
ANY ONE of the following:	ANY ONE of the
Kaupapa are unacceptably weak and not evident at all levels of programme.	Kaupapa are weaknesses at
Significant gaps or weaknesses are not managed effectively.	Little or no evidence Weaknesses in
Does not meet minimum expectations/requirements.	significant improvement

Monitoring by NZQA is not intended to replace actions taken by education or to improve the quality of programmes they are responsible for.

For more information see the [Guidelines for Te Hono o Te Kahurangi evaluation](#)

Relevant rules and legislation

The NZQA rules that apply to Te Hono o Te Kahurangi are:

- [Directory of Assessment Standards Operational and Listing Rules](#)
- [Consent to assess against standards on the Directory of Assessment Standards](#)
- [Training Scheme Rules 2012](#)
- [Private Training Establishment Rules 2018](#)
- [NZQF Programme Approval and Accreditation Rules 2018](#)
- [NZQF Qualification Listing and Operational Rules 2016](#)
- [Quality Assurance \(including External Evaluation and Review\) \(EQAR\) Rules 2018](#)

We'd love your feedback

The Quality Assurance Māori team wants to know the best way to support you using Te Hono o Te Kahurangi quality assurance.

Please give us some feedback by answering this survey. It will be open until 21 December 2018.

Further information

For further information about Te Hono o Te Kahurangi and its processes, please contact us.

All emails will be acknowledged within two working days. You will receive a response within 10 working days.