

Design and Visual Communication

AS 91338

Exemplar D - Merit

AS91338: Produce working drawings to communicate technical details of a design (4 credits)

Achievement	Achievement with Merit	Achievement with Excellence
Produce working drawings to communicate technical details of a design.	Produce working drawings to clearly communicate technical details of a design.	Produce working drawings to effectively communicate technical details of a design.
Produce a set of related 2D instrumental working drawings that communicate technical details showing complex visual information.	Produce a set of working drawings that clearly communicate technical details showing complex visual information.	Produce a coherent set of working drawings that effectively communicate technical details showing complex visual information.
Demonstrate an ability to use drawing conventions in a working drawing.	Demonstrate an ability to apply drawing conventions appropriately to working drawings.	Demonstrate an ability to apply drawing conventions appropriately to working drawings.

M

Comments:

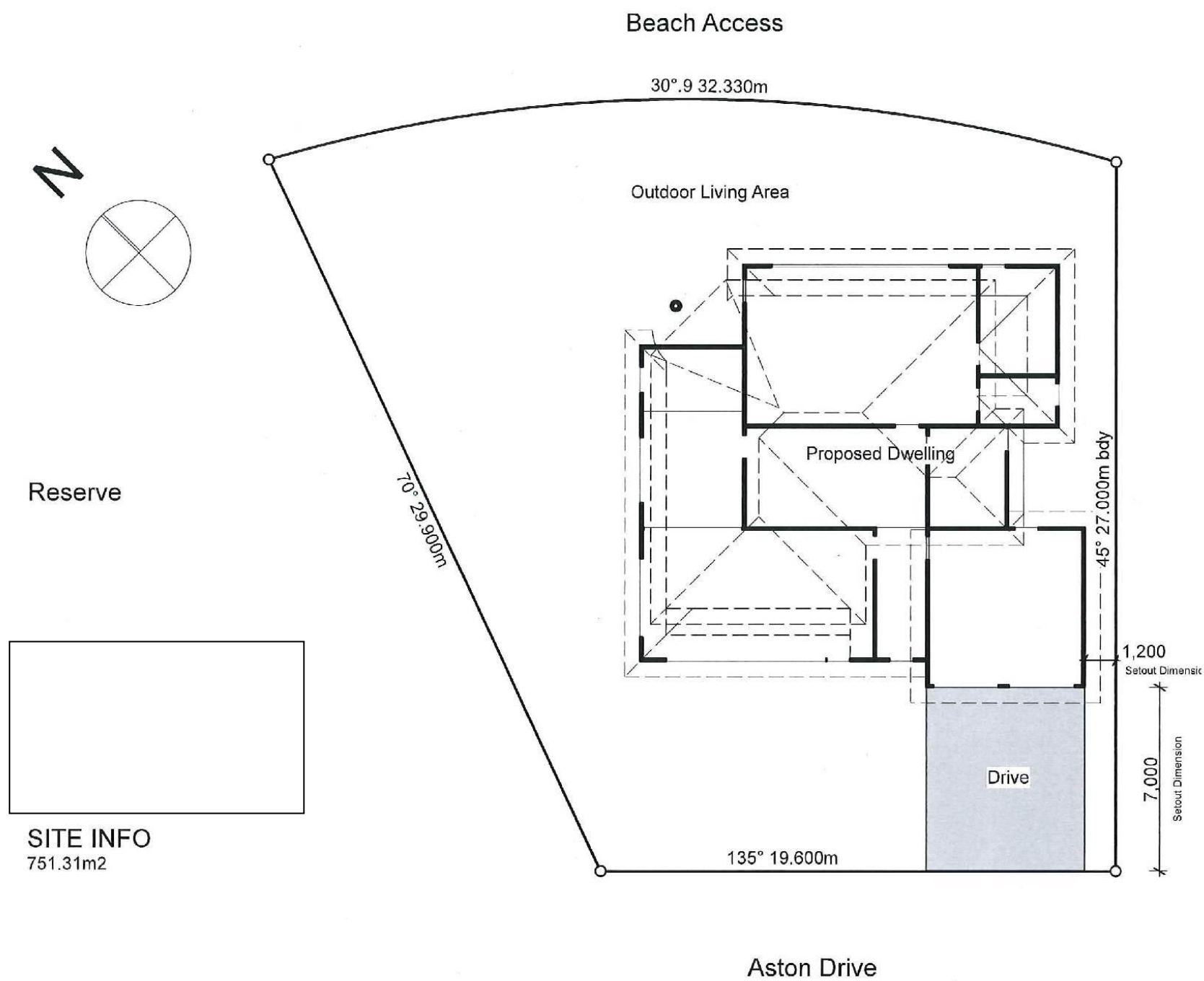
A coherent set of 2-D working drawings has been produced that effectively communicates complex visual information. The drawing shows a plan view, elevations, cross section, an enlarged construction detail at 1:10 and a sheet with 3D drawings of the finished design (This sheet is not required as it is a set of 2D related drawings that is required).

The plan view clearly communicates technical details in the form of room fittings, door swings and windows. The elevations clearly indicate exterior materials, windows and doors. The cross section, drawn at 1:50 clearly shows the level of detail expected at this scale. However the exterior materials shown on the enlarged detail do not relate to the materials of the house shown on the elevations and therefore does not effectively communicate the technical details.

All the drawings are referenced and linked to one another.

Conventions are shown correctly and enough are applied appropriately for this type of drawing.

The drawings have been drawn using standard scales: 1:200, 1:100, 1:50 & 1:10.



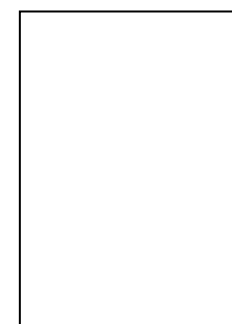
SITE INFO
751.31m²

1

Site Plan

1:200

#Architect Full Address
PHONE: #Architect Phone Number
FAX: #Architect Fax
#Architect E-mail
#Architect Web

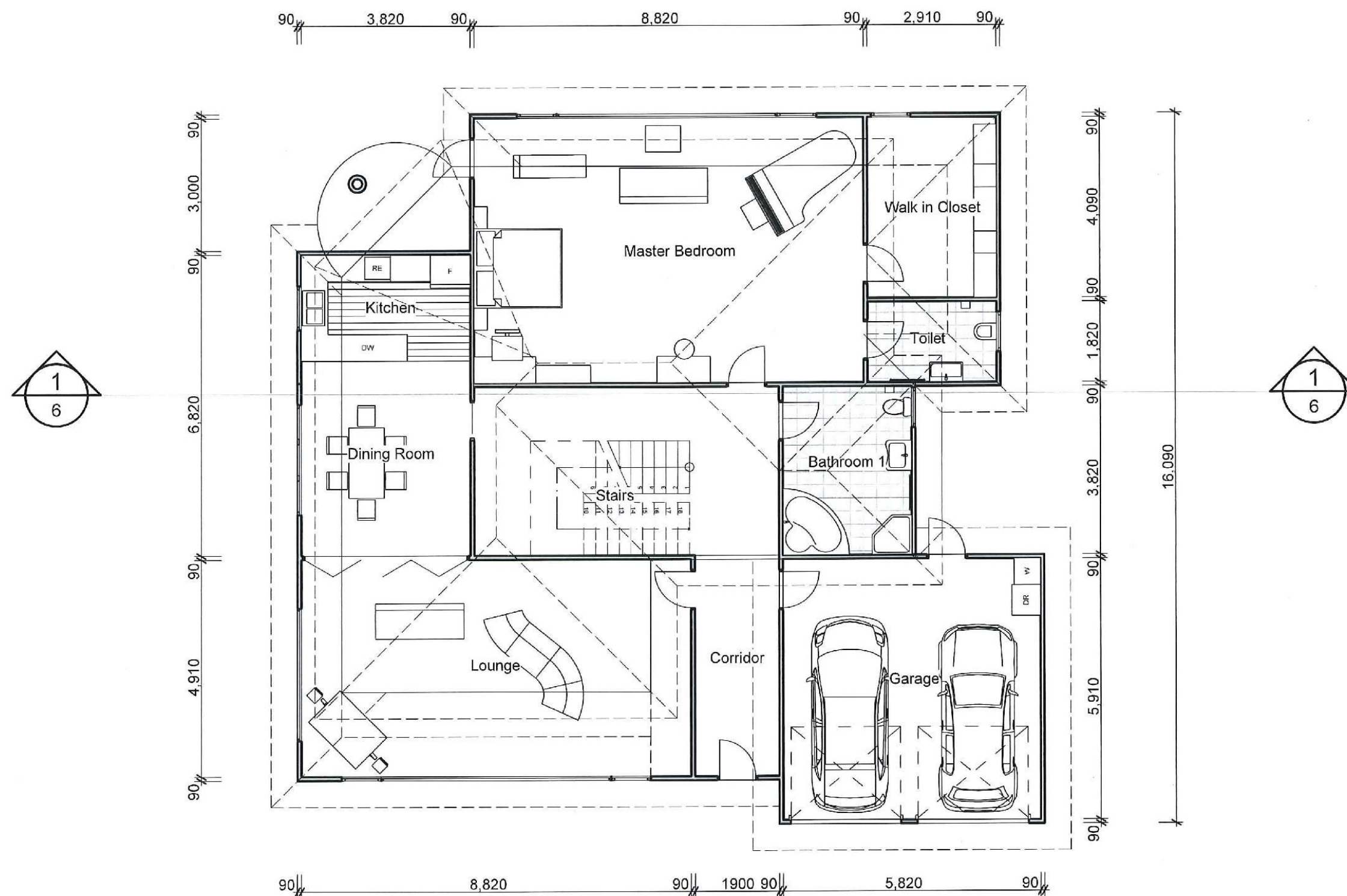


SHEET TITLE: Site Plan
REVISION #:
ISSUED: 23/10/2014
PROJECT #: 1
#Pln

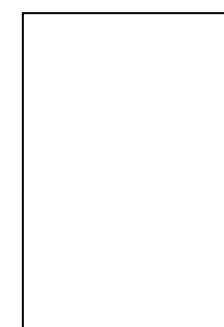
NZQA Assessed

NZQA Assessed





#Architect Full Address
PHONE: #Architect Phone Number
FAX: #Architect Fax
#Architect E-mail
#Architect Web

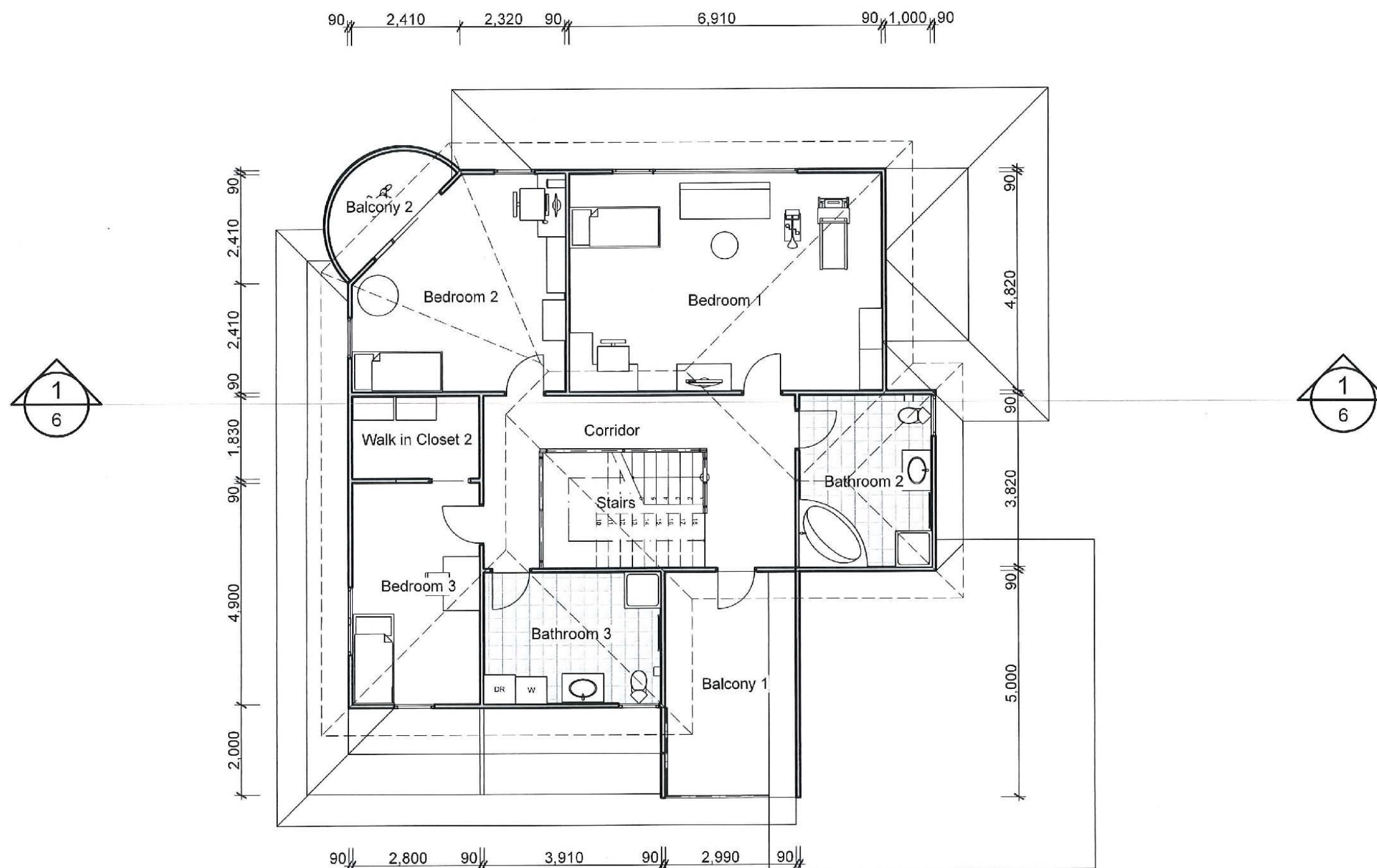


SHEET TITLE: Ground Floor Plan
REVISION #:
ISSUED: 23/10/2014
PROJECT #:
#Pin

2

NZQA Assessed

NZQA Assessed

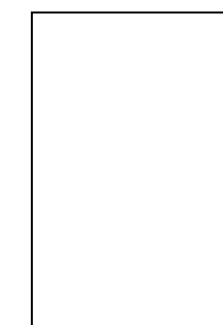


1

Second Storey Plan

1:100

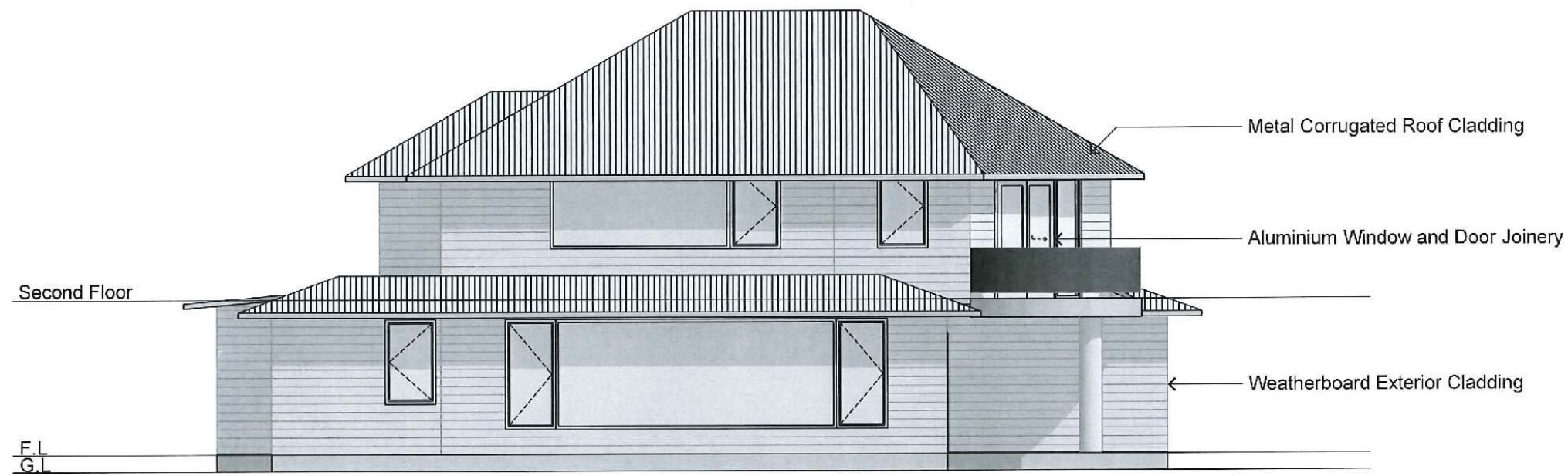
#Architect Full Address
PHONE: #Architect Phone Number
FAX: #Architect Fax
#Architect E-mail
#Architect Web



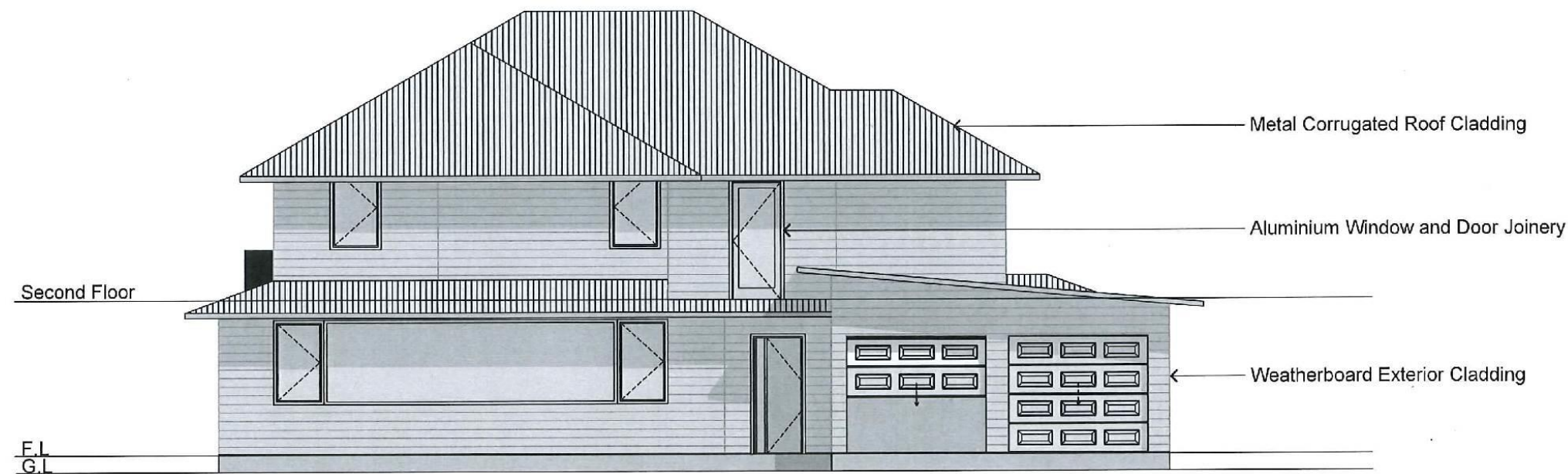
SHEET TITLE: Second Floor Plan
REVISION #:
ISSUED: 23/10/2014
PROJECT #: #Pin

3

NZQA Assessed
NZQA Assessed

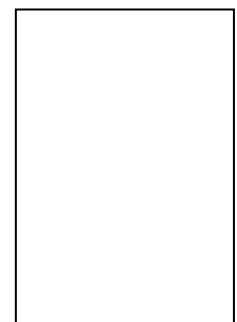


1 North Elevation 1:100



2 South Elevation 1:100

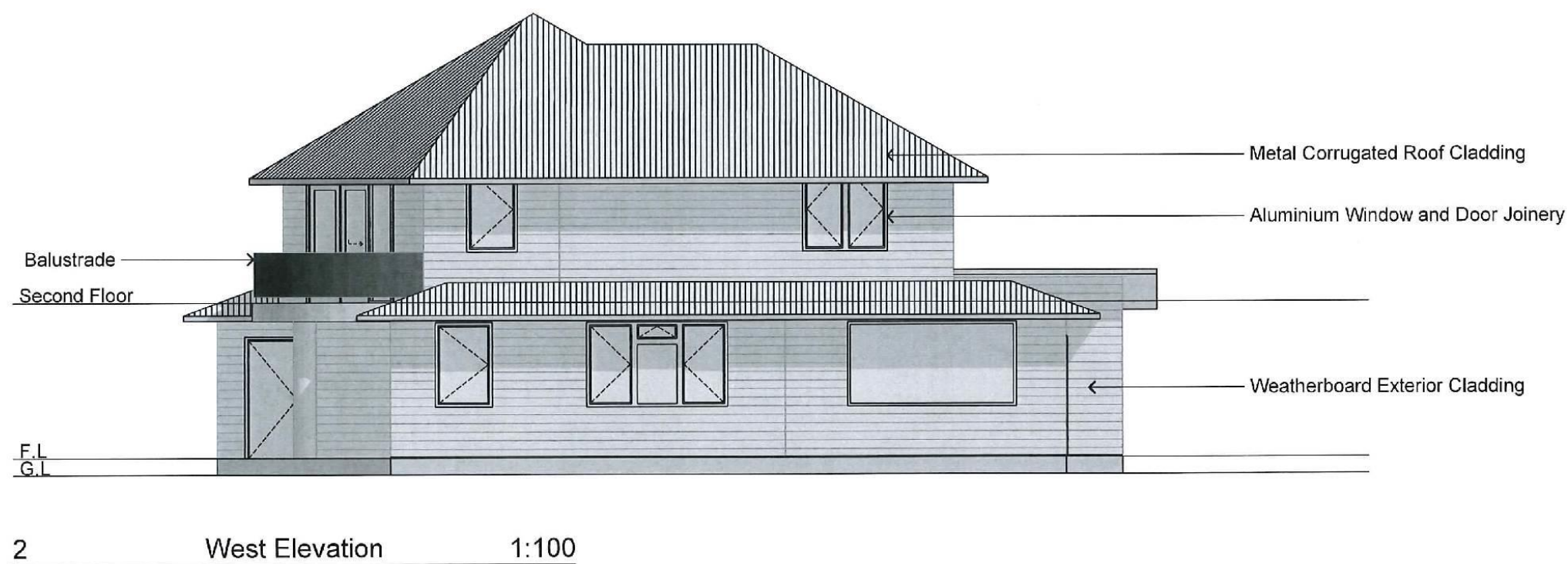
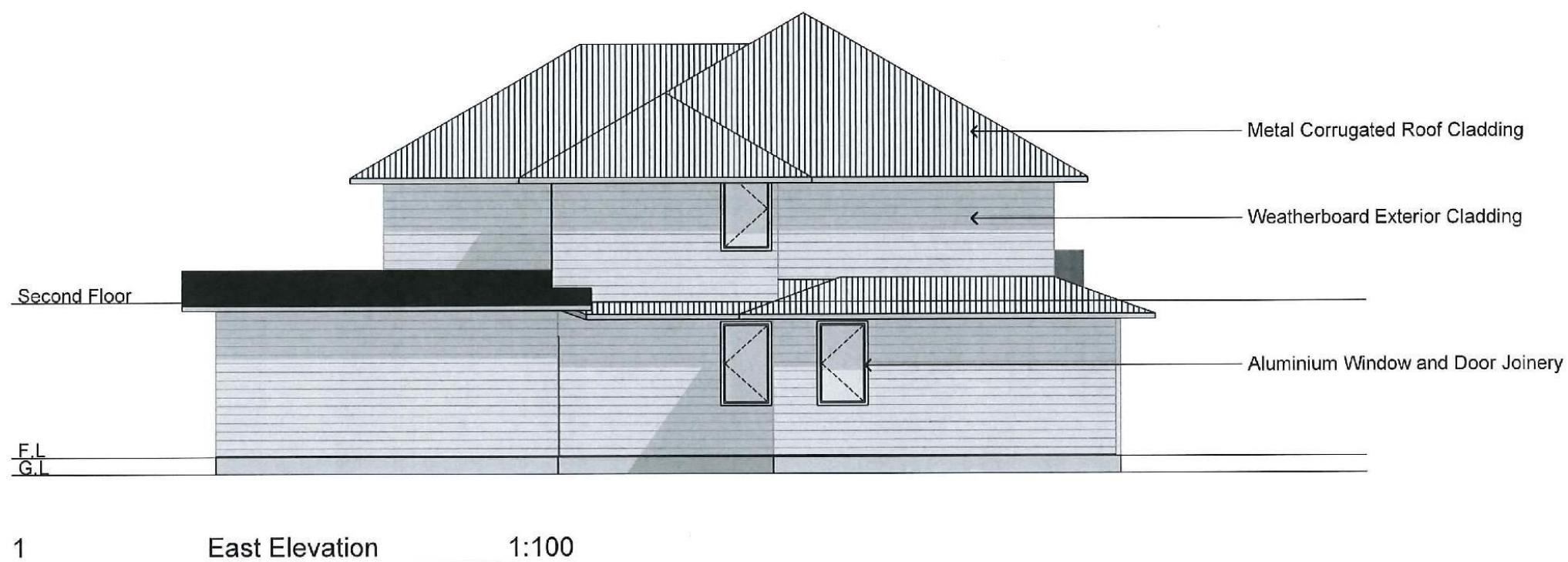
#Architect Full Address
PHONE: #Architect Phone Number
FAX: #Architect Fax
#Architect E-mail
#Architect Web



SHEET TITLE: Elevations
REVISION #
ISSUED: 23/10/2014
PROJECT #
#Pin

NZQA Assessed

NZQA Assessed



#Architect Full Address

PHONE: #Architect Phone Number
FAX: #Architect Fax
#Architect E-mail
#Architect Web



SHEET TITLE: Elevations

REVISION #:

ISSUED: 23/10/2014

PROJECT #:

#Pin

NZQA Assessor 5



TIMBER TREATMENT SCHEDULE

ARCHICAD EDUCATION VERSION
GRAPHISOFT.

MEMBER: SPECIES: TREATMENT:
PURLINS * RADIATA PINE H3.1
I BEAM RAFTERS RADIATA PINE H3.1
* - MAY BE SUBSTITUTED FOR UNTREATED KILN DRIED
AND GAUGED RADIATA PINE WITH AN IN SERVICE
MOISTURE CONTENT OF <18%
NOTE:
SEE DRAWINGS FOR ADDITIONAL MEMBER SPECIFIC TREATMENT
EXTERIOR FRAMING RADIATA PINE H1.2
INTERIOR FRAMING RADIATA PINE H1.1
FASCIA & BARGE RADIATA PINE H3.1
CAVITY BATTENS RADIATA PINE H3.1
RAFTER SUPPORT BEAMS TO
SKILLION ROOF RADIATA PINE H3.1
FLOOR JOISTS RADIATA PINE UNTREATED
TIMBER FLOOR PACKERS RADIATA PINE H3.2
BLOCKWALL BATTENS RADIATA PINE H1.2
LINTEL SUPPORTING VENEER ANGLE RADIATA PINE H3.1
FRAMING AND STUDS
SUPPORTING VENEER ANGLE RADIATA PINE H3.1

Coloursteel Corrugated Roofing on battens on
underlay on purpose made Trusses @ 900crs

13mm Gibboard to ceiling on ceiling battens
@ 590crs with 2.6 insulation Batts

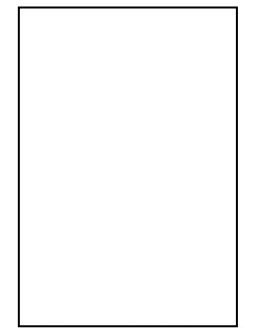
Aluminium Window and Door joinery
with 3.1 treated timber reveals

Weatherboard cladding on 90x45 ext
wall framing with 2.4 Batts insulation

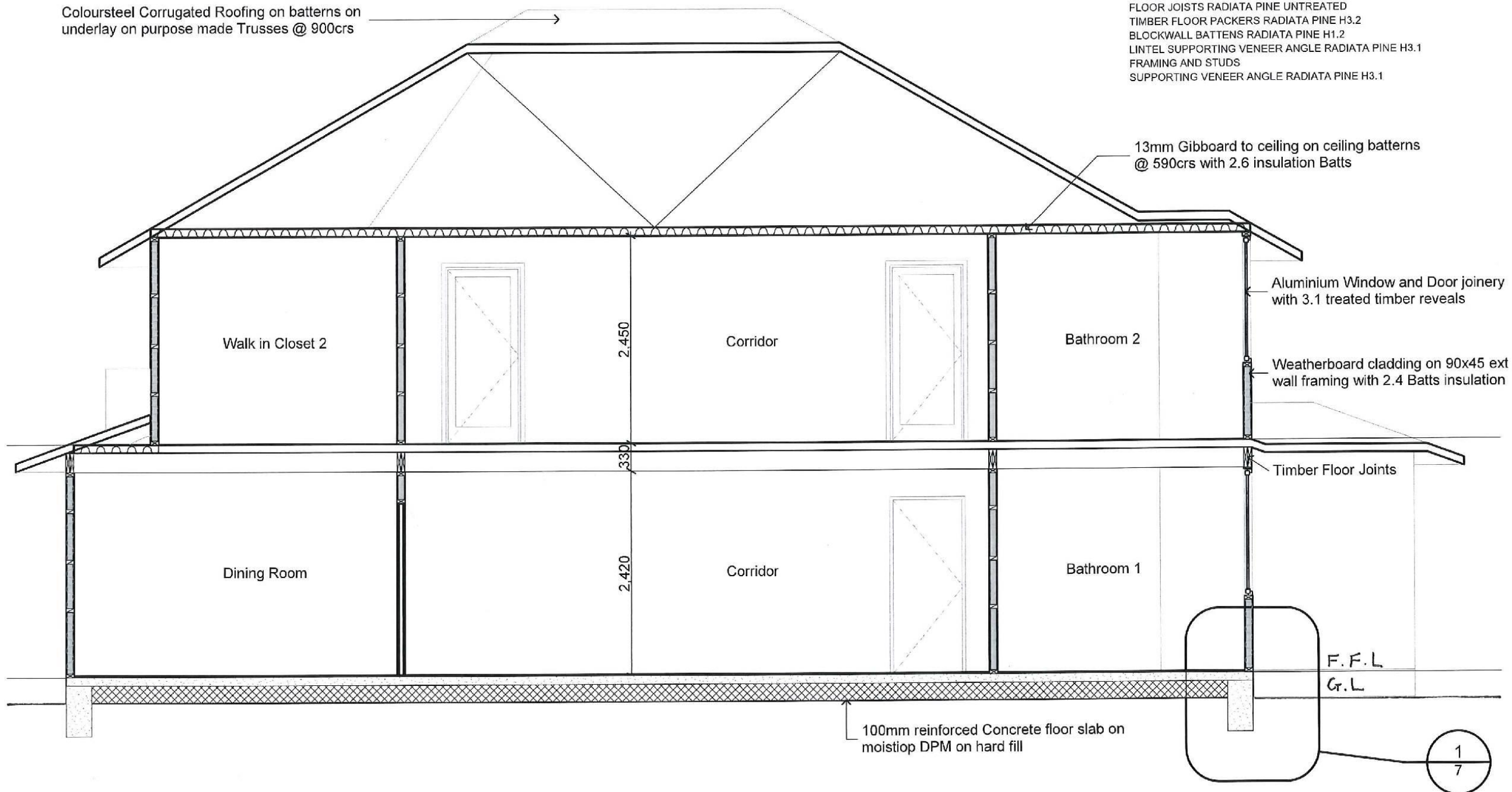
Timber Floor Joints

100mm reinforced Concrete floor slab on
moistop DPM on hard fill

#Architect Full Address
PHONE: #Architect Phone Number
FAX: #Architect Fax
#Architect E-mail
#Architect Web

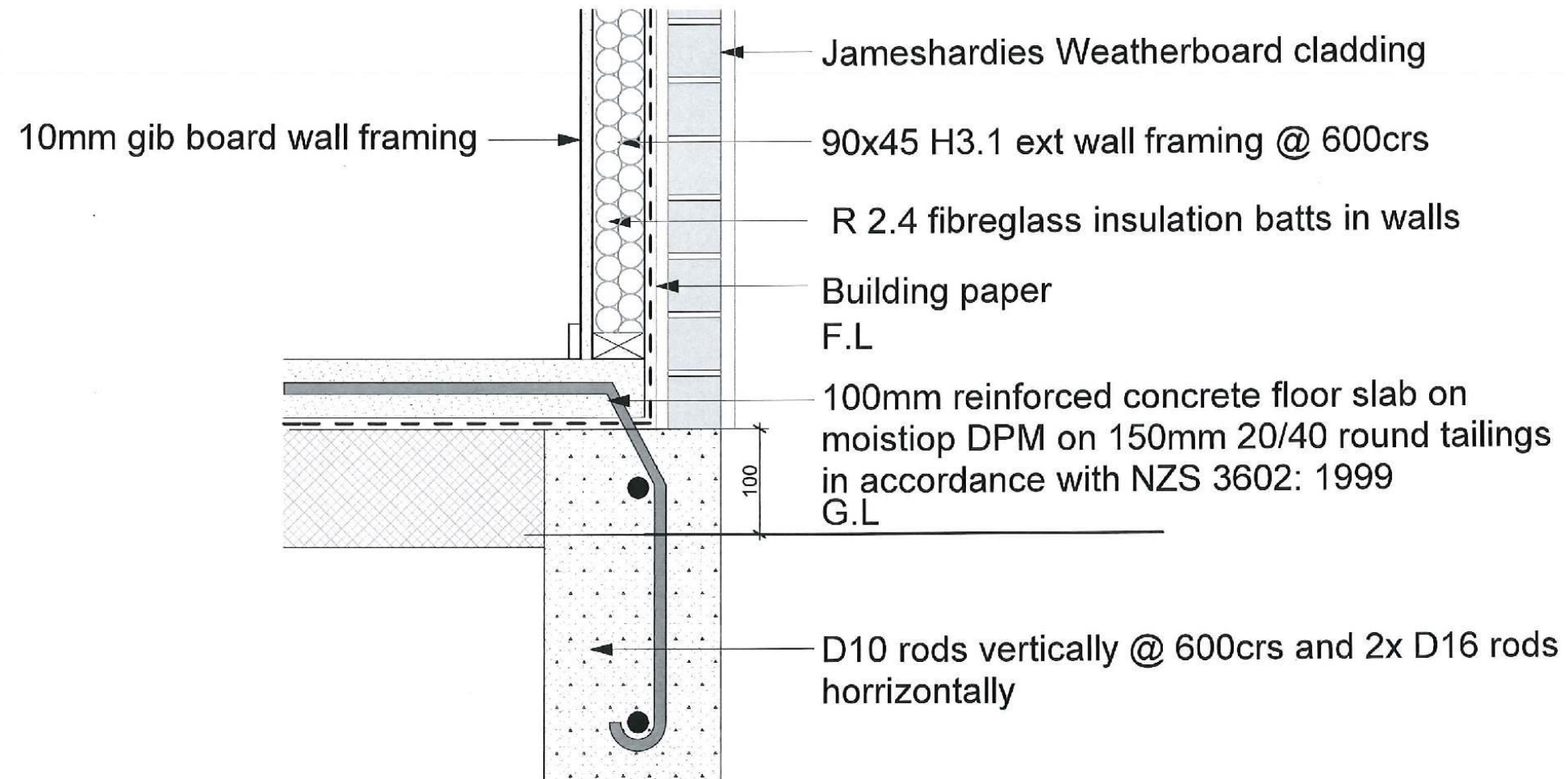


SHEET TITLE: Cross Section
REVISION #
ISSUED: 23/10/2014
PROJECT #
#Pln
NZQA Assessor 6



Section A-A

1:50



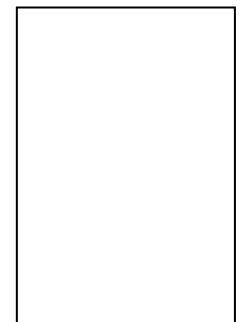
1

Foundation Detail

1:10

#Architect Full Address

PHONE: #Architect Phone Number
FAX: #Architect Fax
#Architect E-mail
#Architect Web



SHEET TITLE: Details

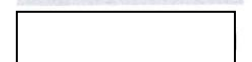
REVISION #:

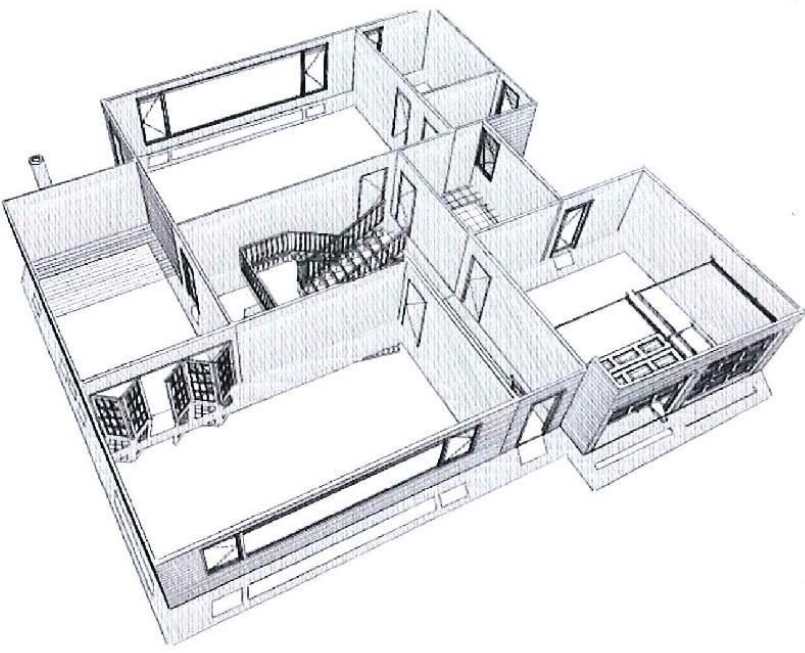
ISSUED: 23/10/2014
PROJECT #:

#Pin

NZQA Assessed

NZQA Assessed





#Architect Full Address
PHONE: #Architect Phone Number
FAX: #Architect Fax
#Architect E-mail
#Architect Web



SHEET TITLE: 3Ds
SHEET
REVISION #
ISSUED: 23/10/2014
PROJECT #
#Pin

8

NZQA
Assessed