

Design and Visual Communication

AS 91338

Exemplar A - Excellence

AS91338: Produce working drawings to communicate technical details of a design (4 credits)

Achievement	Achievement with Merit	Achievement with Excellence
Produce working drawings to communicate technical details of a design.	Produce working drawings to clearly communicate technical details of a design.	Produce working drawings to effectively communicate technical details of a design.

Produce a set of related 2D instrumental working drawings that communicate technical details showing complex visual information .	Produce a set of working drawings that clearly communicate technical details showing complex visual information.	Produce a coherent set of working drawings that effectively communicate technical details showing complex visual information.
Demonstrate an ability to use drawing conventions in a working drawing.	Demonstrate an ability to apply drawing conventions appropriately to working drawings.	Demonstrate an ability to apply drawing conventions appropriately to working drawings.

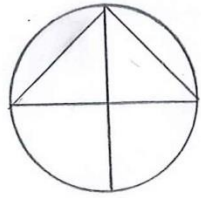
E

COMMENTS:
A coherent set of 2-D working drawings has been produced that effectively communicates complex visual information. The drawings show a site plan, floor plan, elevations, cross section and some enlarged construction details. All drawings clearly communicate details of the design. The drawings are referenced and linked to one another, making this a coherent set of drawings.

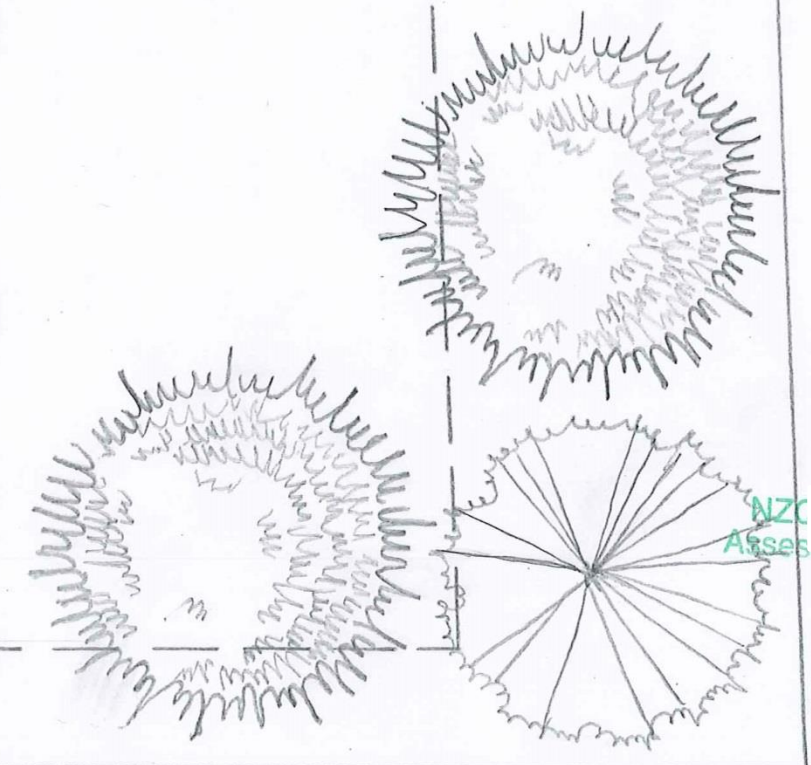
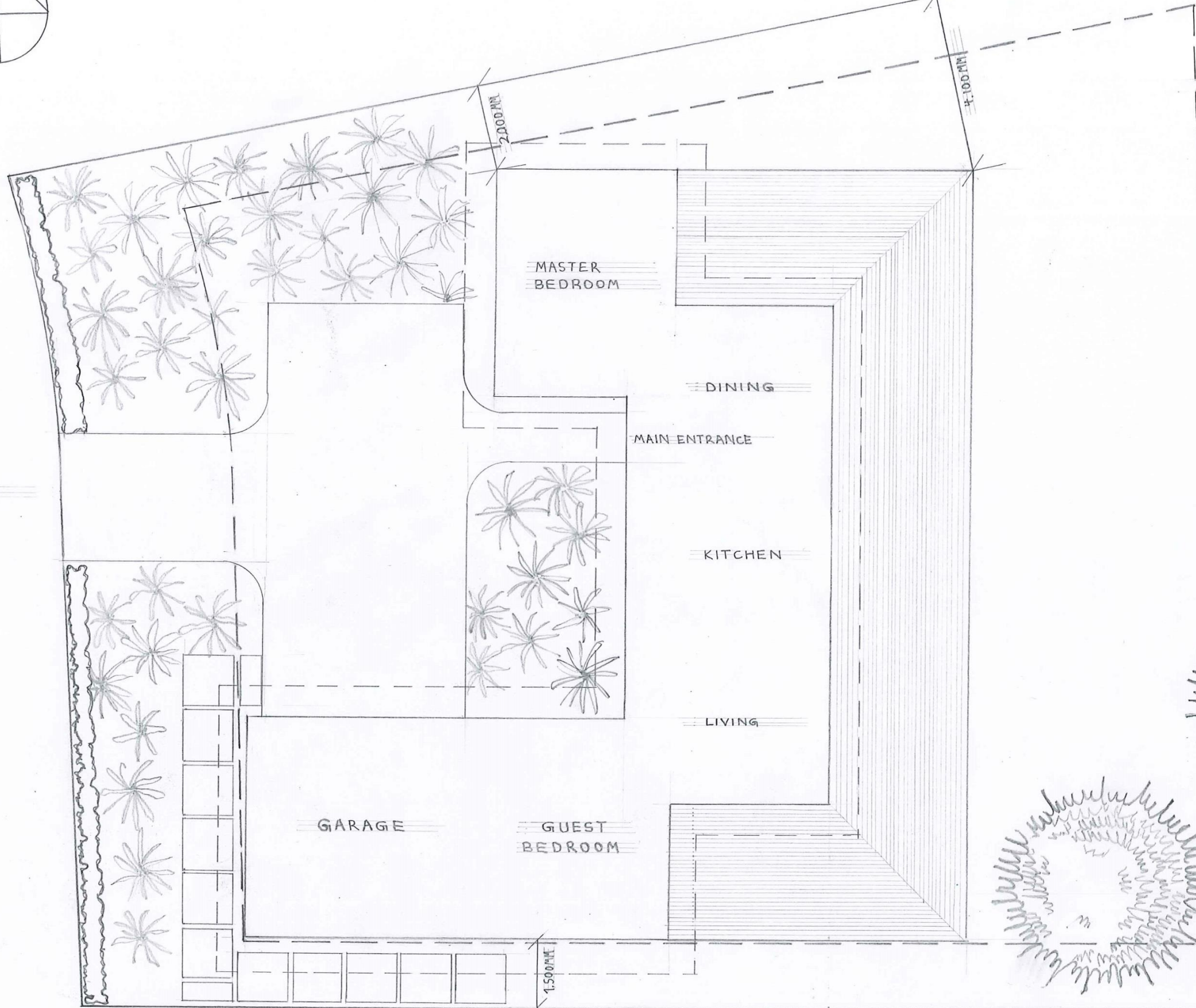
Conventions are used correctly and applied appropriately for this type of drawing.

The drawings have been drawn using standard scales: 1:100 & 1:10.

BEACH HOUSE || SITE PLAN



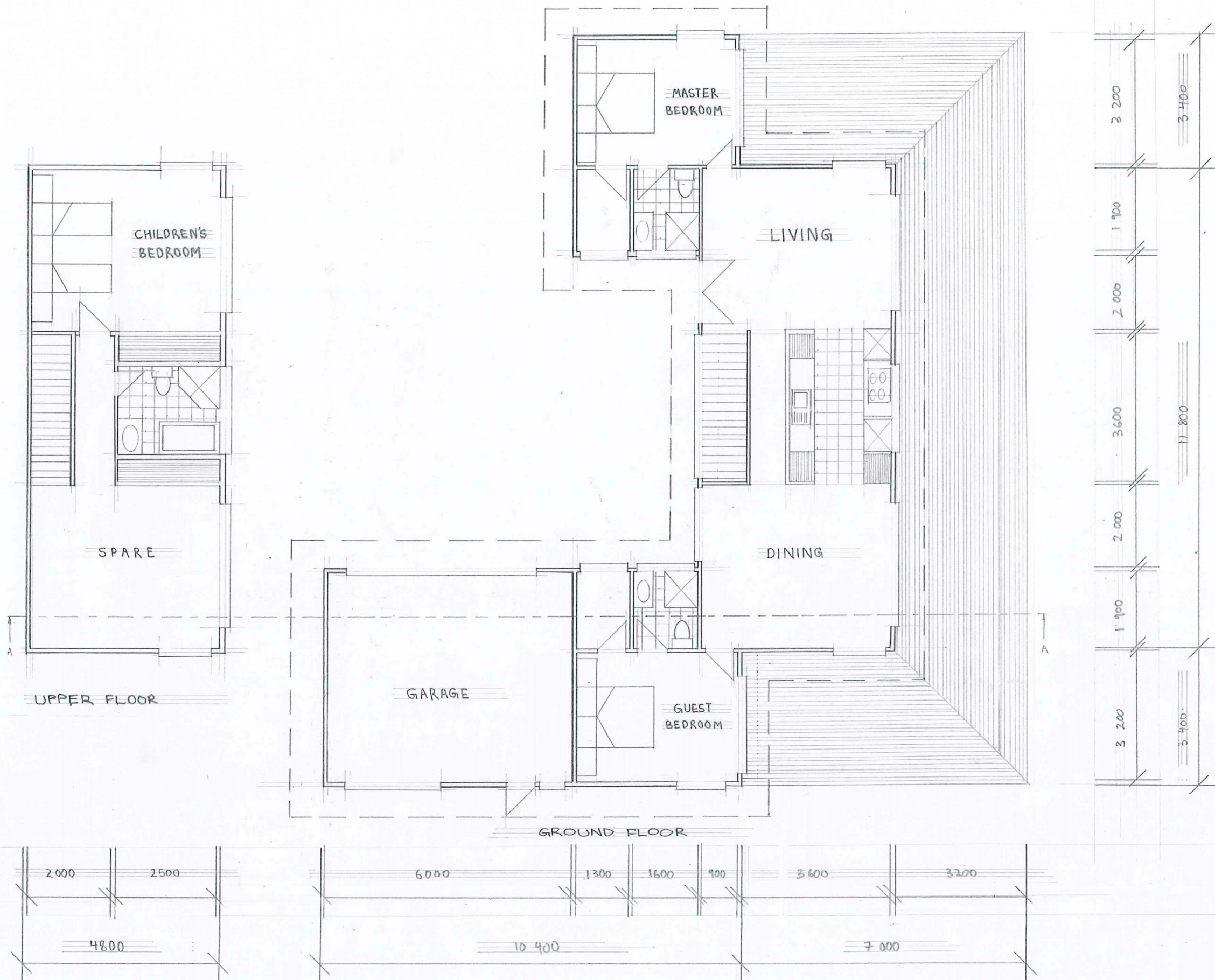
ROAD



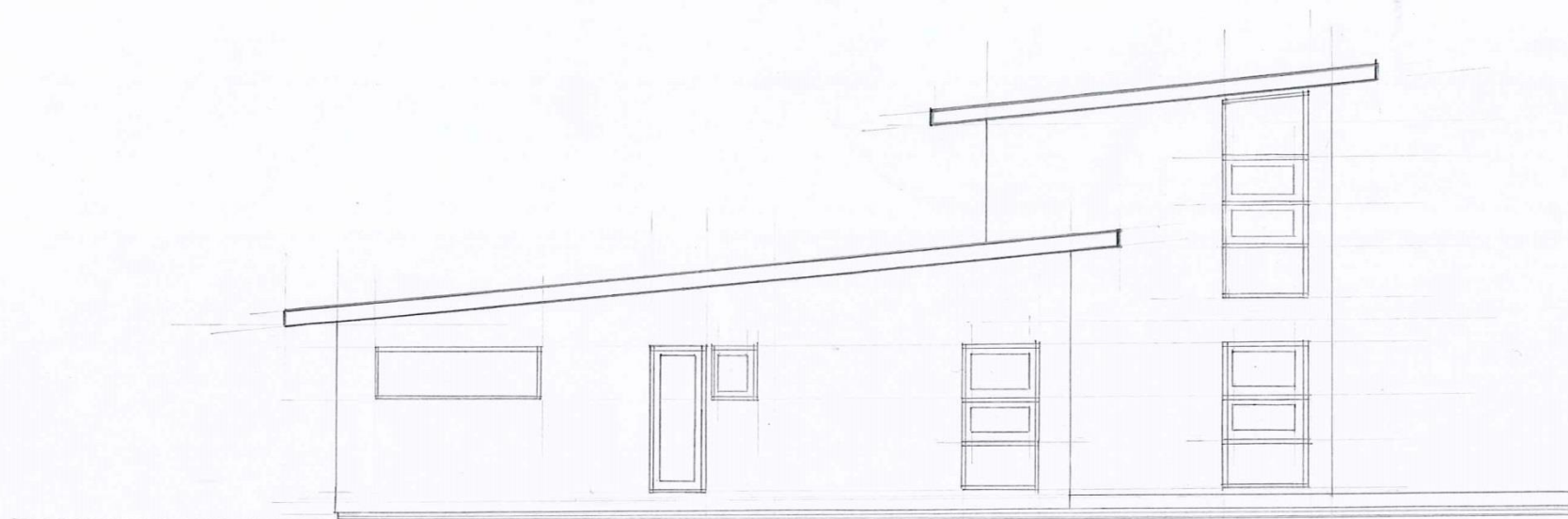
NZC
Asses...

SCALE 1:100

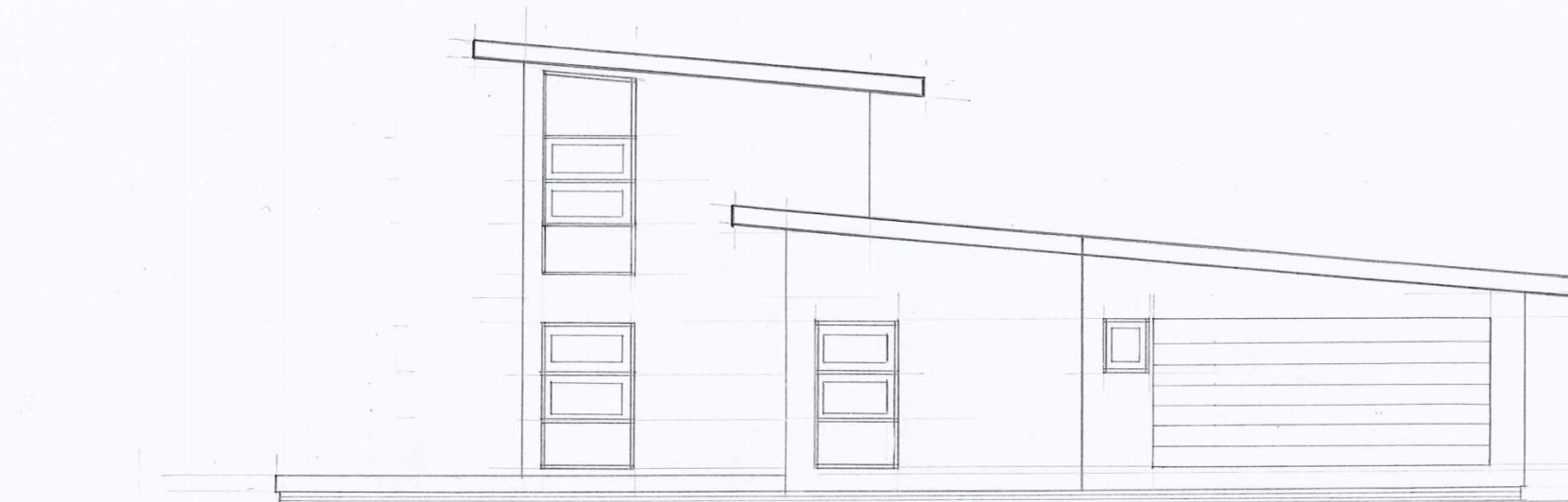
BEACH HOUSE || FLOOR PLAN



BEACH HOUSE || NORTH & SOUTH ELEVATIONS

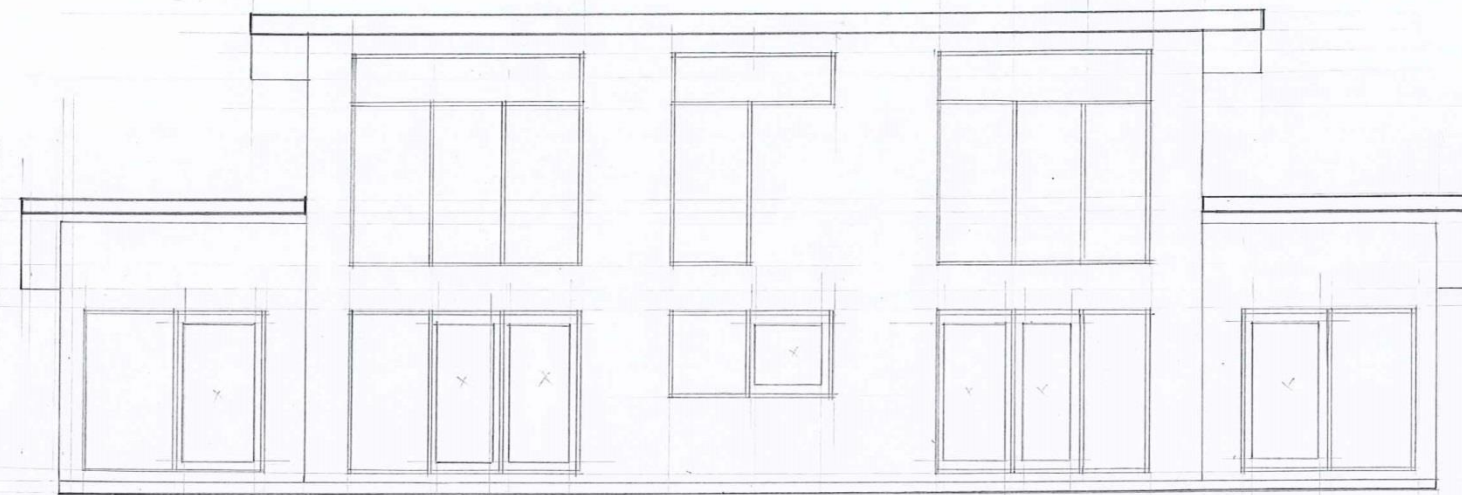


SOUTH ELEVATION



NORTH ELEVATION

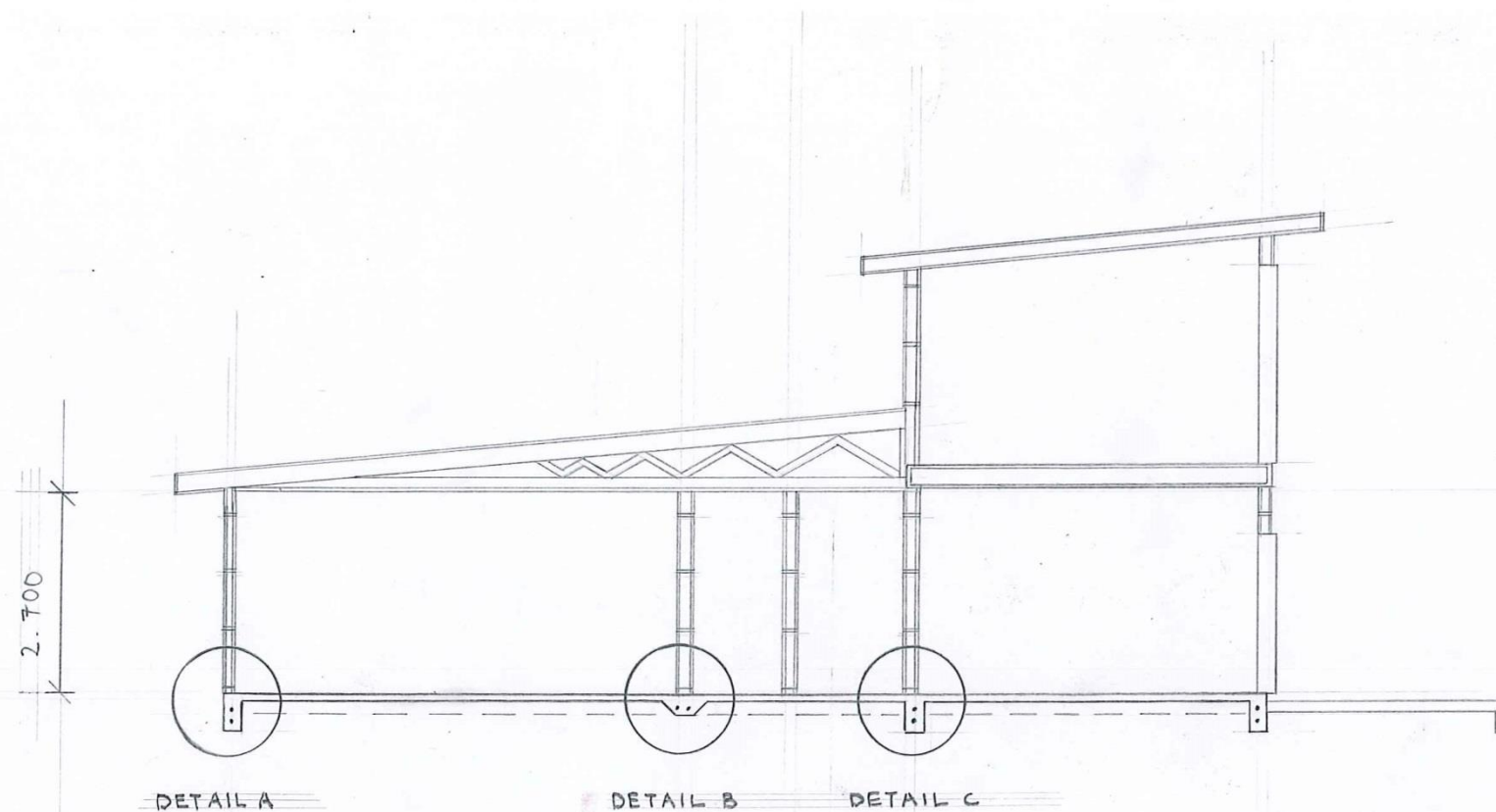
BEACH HOUSE || EAST & WEST ELEVATIONS



EAST ELEVATION

used

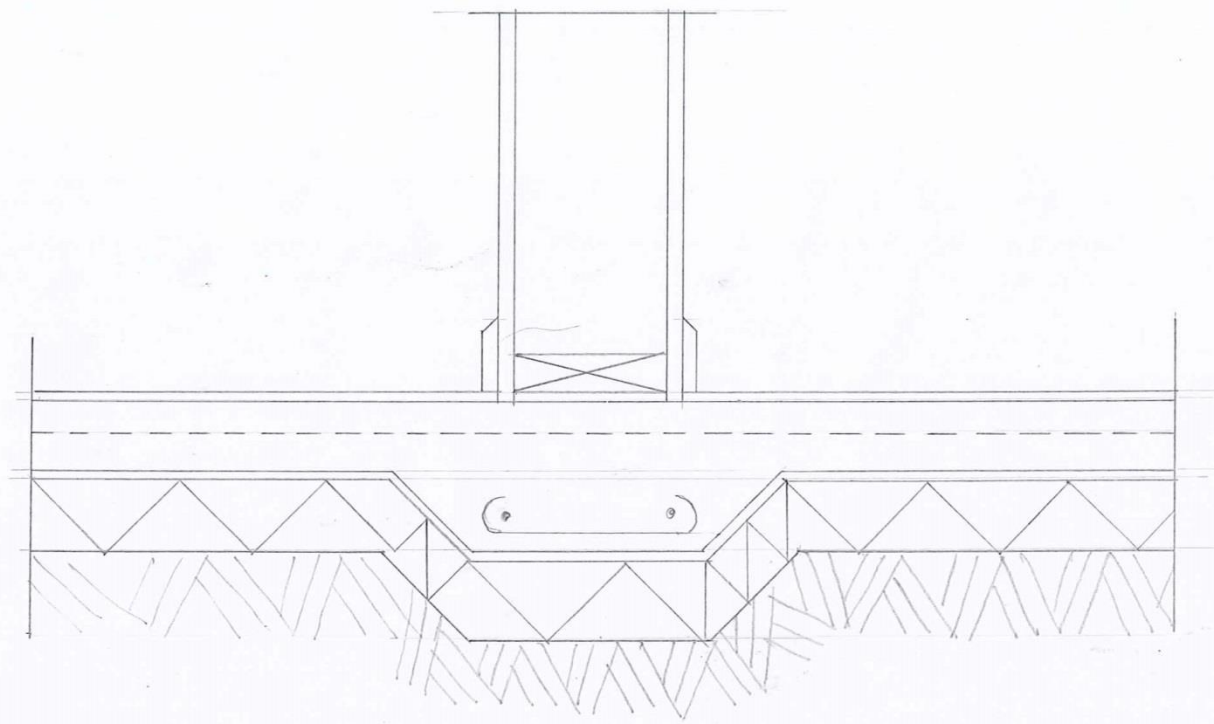
BEACH HOUSE || SECTIONAL VIEW A-A



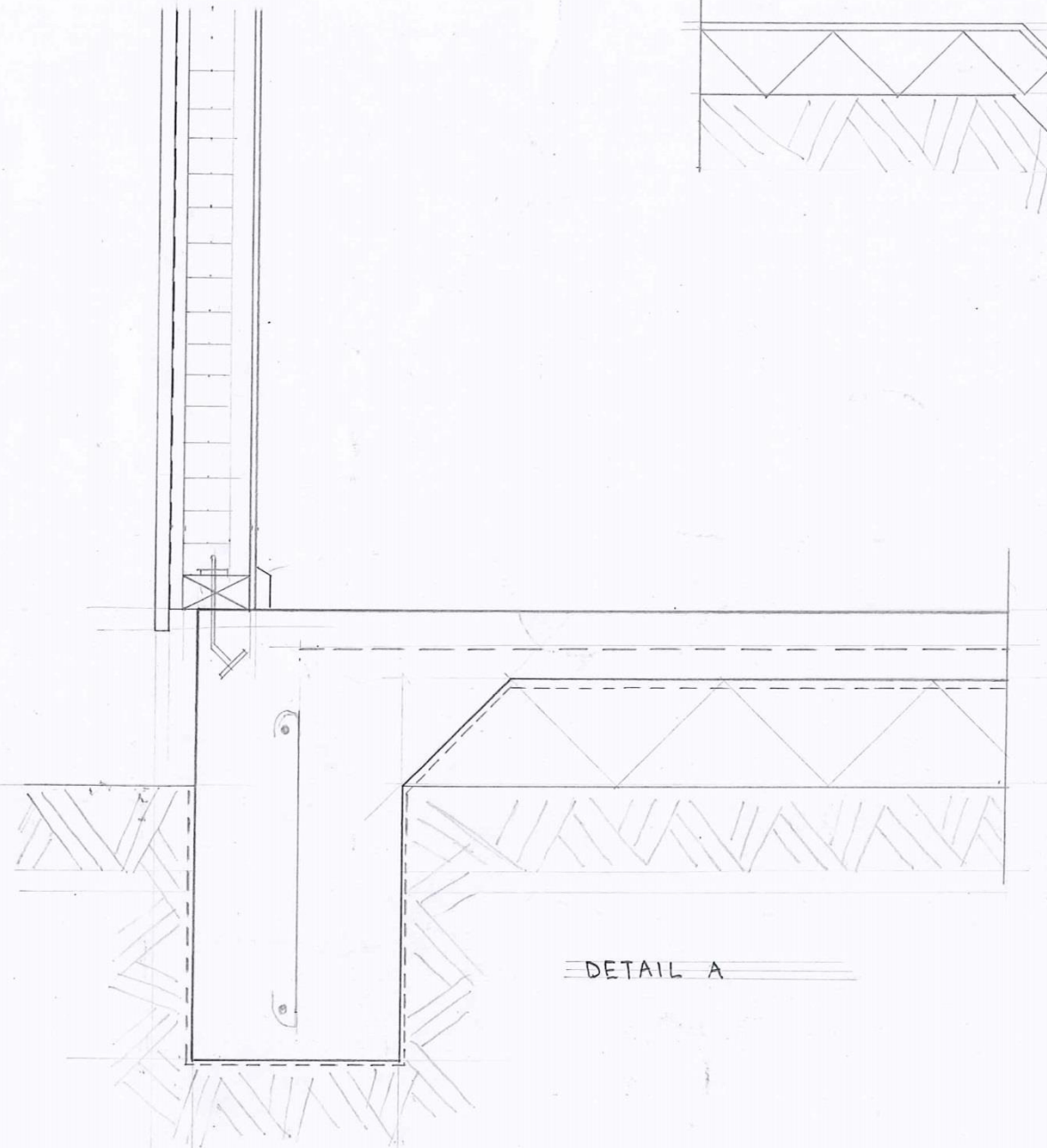
- LONG-RUN COLOUR STEEL ROOFING OVER SELF SUPPORTING BUILDING PAPER ON 75 x 50mm PURLINS AT 900mm CRS.
- 200 x 50mm RAFTERS AT 900mm CRS PITCHED 5 DEGREES
- 5 DEGREE PITCHED GANG NAIL ROOFING TRUSSES AT 900mm CRS.
- 600mm HARDIGLAZE SOFFIT ON 75 x 50mm SOFFIT FRAMING
- EX 200 x 25mm FASCIA BOARD AND MARLEY PVC RAINWATER SYSTEM.
- EX 180 x 50mm PLATE AND 75 x 50mm CEILING BATTENS AT 450mm CRS.
- 10mm GIB-BOARD CEILING
- 10mm GIB-BOARD LINED 100 x 50mm WALL FRAMING
- 100mm THICK CONCRETE FLOOR SLAB REINFORCED WITH 665 MESH ON POLYTHENE DPM.
- MIN 100mm MACHINE COMPACTED WITH HARDFILL AND 50mm SAND BLINDING.
- 450 x 250mm CONCRETE FOOTING REINFORCED WITH 7/12mm DIAMETER RODS AND 6mm DIAMETER TIES AT 500mm CRS.
- ALUMINIUM JOINERY

SCALE 1:100

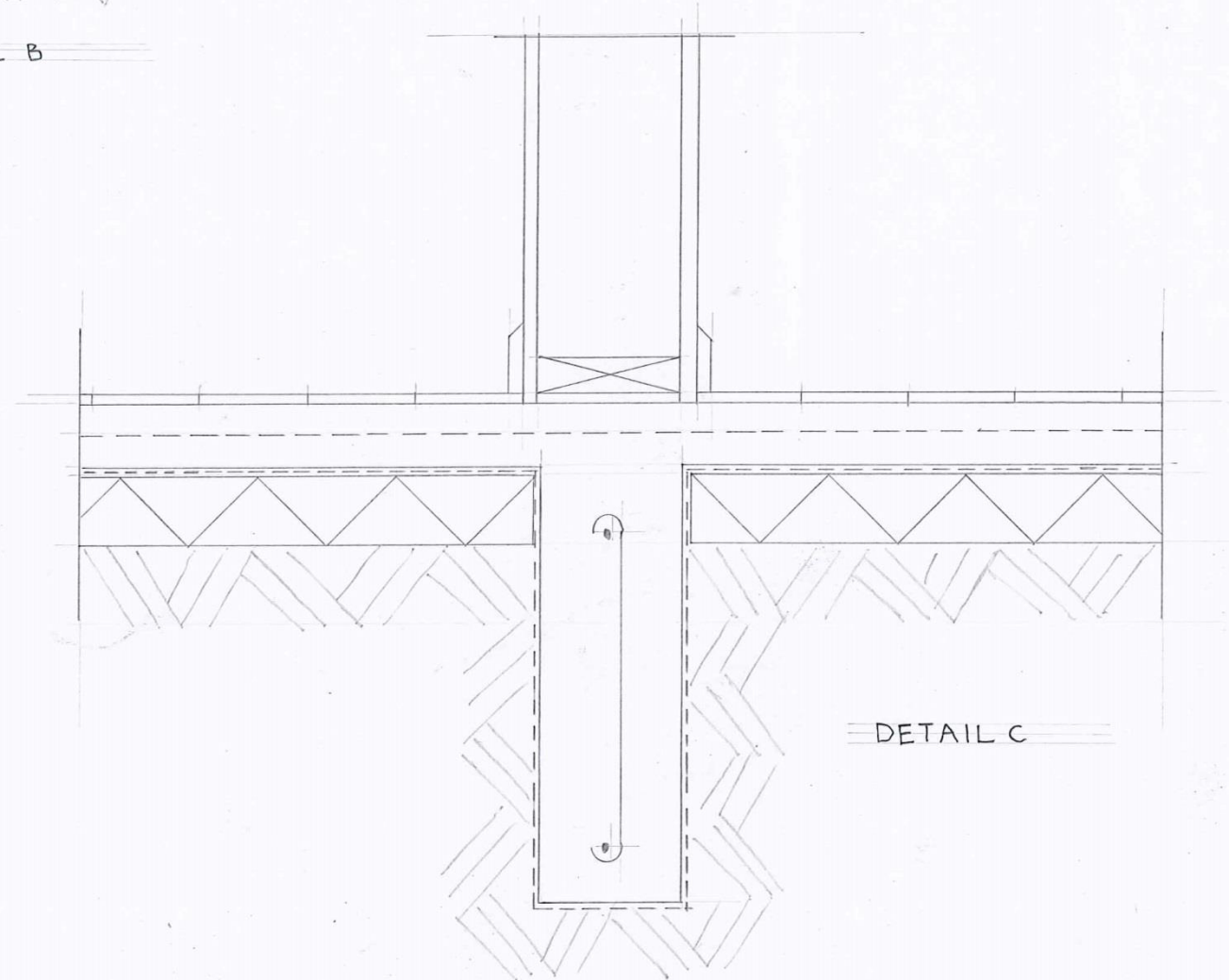
BEACH HOUSE // CONSTRUCTION DETAIL



DETAIL B



DETAIL A



DETAIL C