

Design and Visual Communication

AS 91339

Exemplar E - Achieve

AS91339: Produce instrumental perspective projection drawings to communicate design ideas (3 credits)

Achievement	Achievement with Merit	Achievement with Excellence
Produce instrumental perspective projection drawings to communicate design ideas.	Produce instrumental perspective projection drawings to clearly communicate design ideas	Produce instrumental perspective projection drawings to effectively communicate design ideas.
Uses perspective projection drawing techniques to communicate complex visual information.	Uses perspective projection drawing techniques to skilfully communicate complex visual information.	Demonstrate an ability to select a viewpoint that enables complex visual information of the design to be effectively communicated.
The instrumental perspective drawing shows design features .	The instrumental perspective drawing clearly shows detail of the design features	The instrumental perspective drawing accurately shows detail of the design features

A

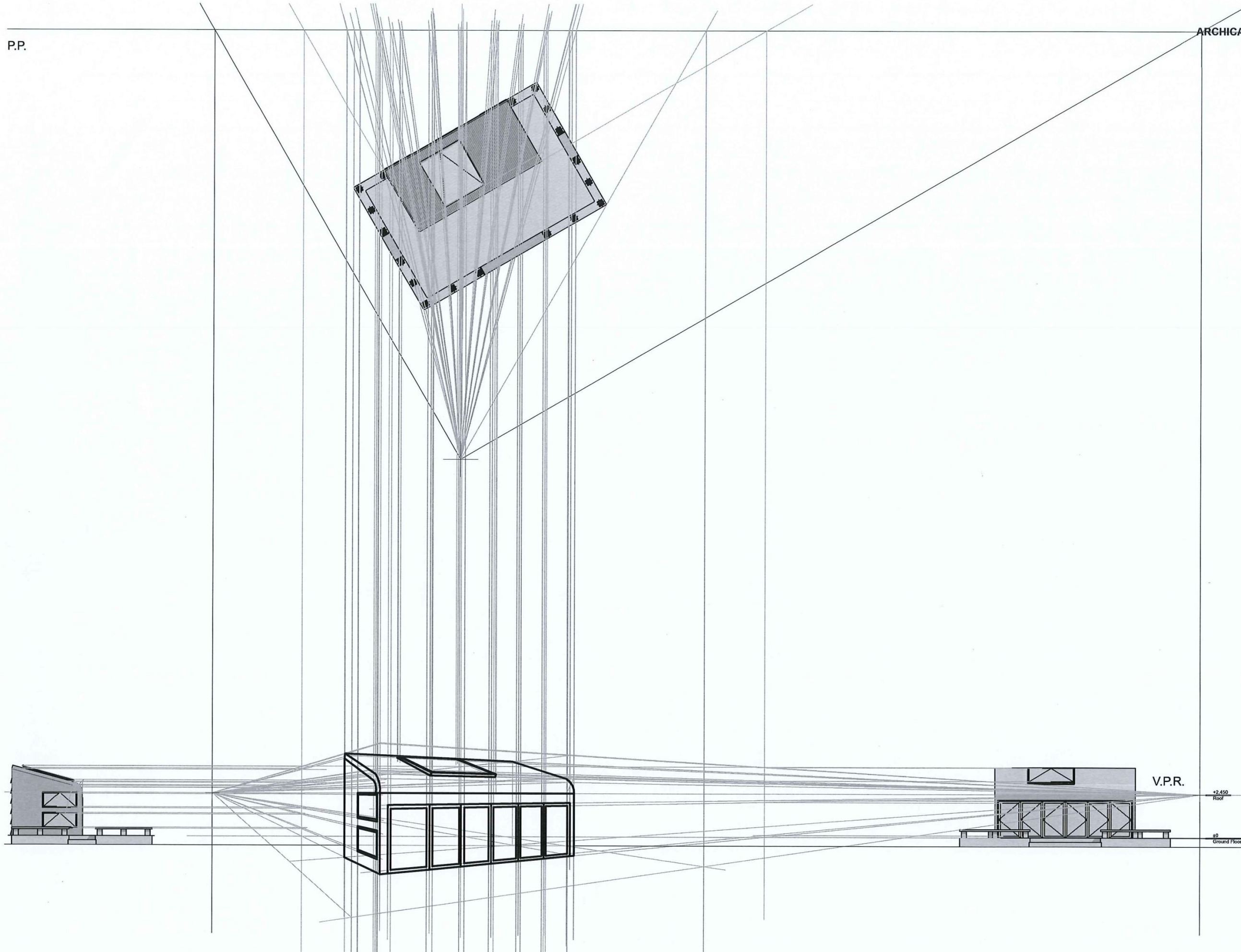
COMMENTS:

The perspective principles have been applied and the setting up and use of the height line is correct. However, the final drawing is small, therefore preventing the visual information from being communicated effectively.

The plan and elevation that have been used to draw the perspective are small, resulting in a small perspective drawing. This makes it difficult to show the depth and detail of the design features required to achieve at higher levels.

A larger perspective would have allowed the design features to be shown in more detail.

P.P.



Sleep-out

SHEET TITLE: Perspective
REVISION #:
ALL DIMENSIONS IN mm
SCALE AS SHOWN
ISSUED: 30/10/15
Sleep-out #P/n

NZQA
Assessec

SHEET 108