

## Exemplar

### AS 91631 (3.34) Produce working drawings to communicate production details for a complex design. (6 credits)

Achievement	Achievement with Merit	Achievement with Excellence
Produce working drawings to communicate production details for a complex design.	Produce working drawings to clearly communicate production details for a complex design.	Produce working drawings to effectively communicate production details for a complex design.

#### Marking Schedule

Produce a <del>set of related</del> <b>instrumental</b> working drawings showing <del>exterior and interior</del> <b>detail</b> of components <del>related</del> to the construction and assembly of a design.	Produce a <del>precise</del> set of related instrumental working drawings showing exterior and interior detail of components that <del>explains</del> the construction and assembly of a design.	Produce a precise and <del>cohesive</del> set of related instrumental working drawings through the <del>appropriate selection of views and modes</del> that <del>enable</del> the construction and/or assembly of a design.
Demonstrate an ability to use <del>drawing conventions and presentation techniques</del> to communicate details of a complex design.	Demonstrate an ability to <del>accurately apply</del> drawing conventions and presentation techniques to <del>clearly</del> communicate details of a complex design.	Demonstrate an ability to accurately apply drawing conventions and presentation techniques to clearly communicate <del>production</del> details of a complex design.

Commentary: **This submission is assessed at Achievement.**

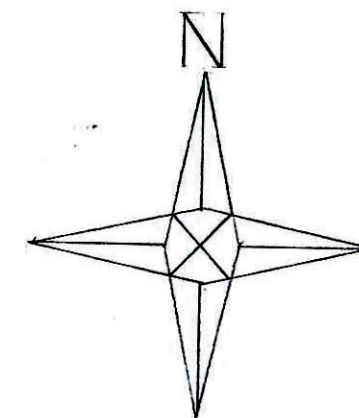
This submission shows plans for a retirement home.

It is a related set of drawings of the multiple components required for a complex design. It incorporates drawing conventions such as numbering each drawing as part of the set, uses recognised scales and is appropriately numbered.

The set of drawings includes:

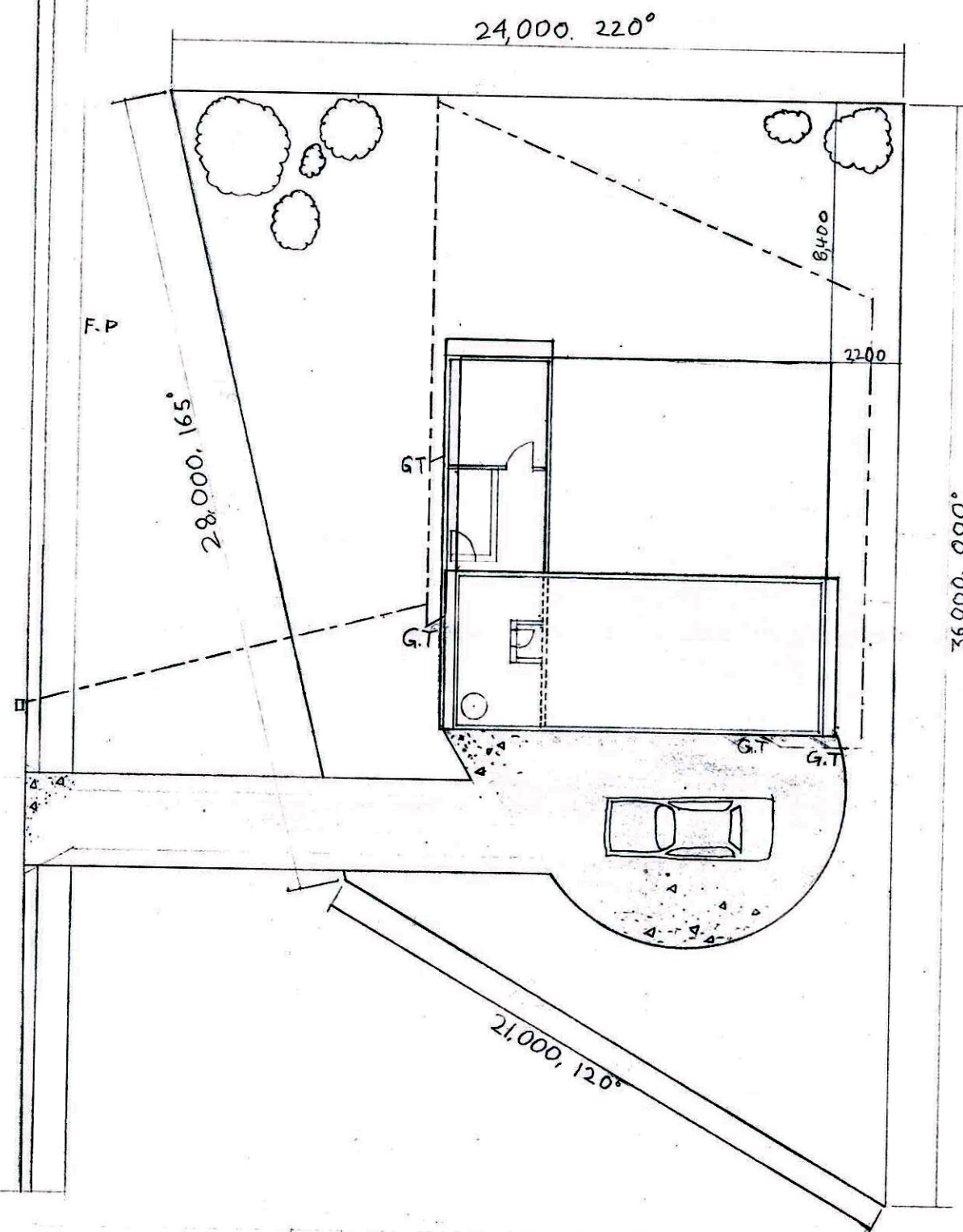
- A site plan that is dimensioned, uses a recognised scale and includes the North symbol.
- Floor plans of each level of the home including interior detail consisting of labelled and dimensioned rooms. One floor is sectioned.
- Each elevation including labelled construction material.
- A section view that includes three construction detail pull-outs.
- Pull-out details drawn in greater detail.
- An isometric projection of interior detail.

The drawings are drawn by hand and are accurate meeting the precision criterion. However the detail of components does not meet the “explains the construction and assembly of a design.” The pull-out detail of the foundation is not contextualised to the house design, and the deck joists detail are missing in the deck construction pull-out. These errors also affect the “clearly communicate details of a complex design”.



LOT No. 89  
DPS 381050  
AREA 637.08 sqm

MARX STREET



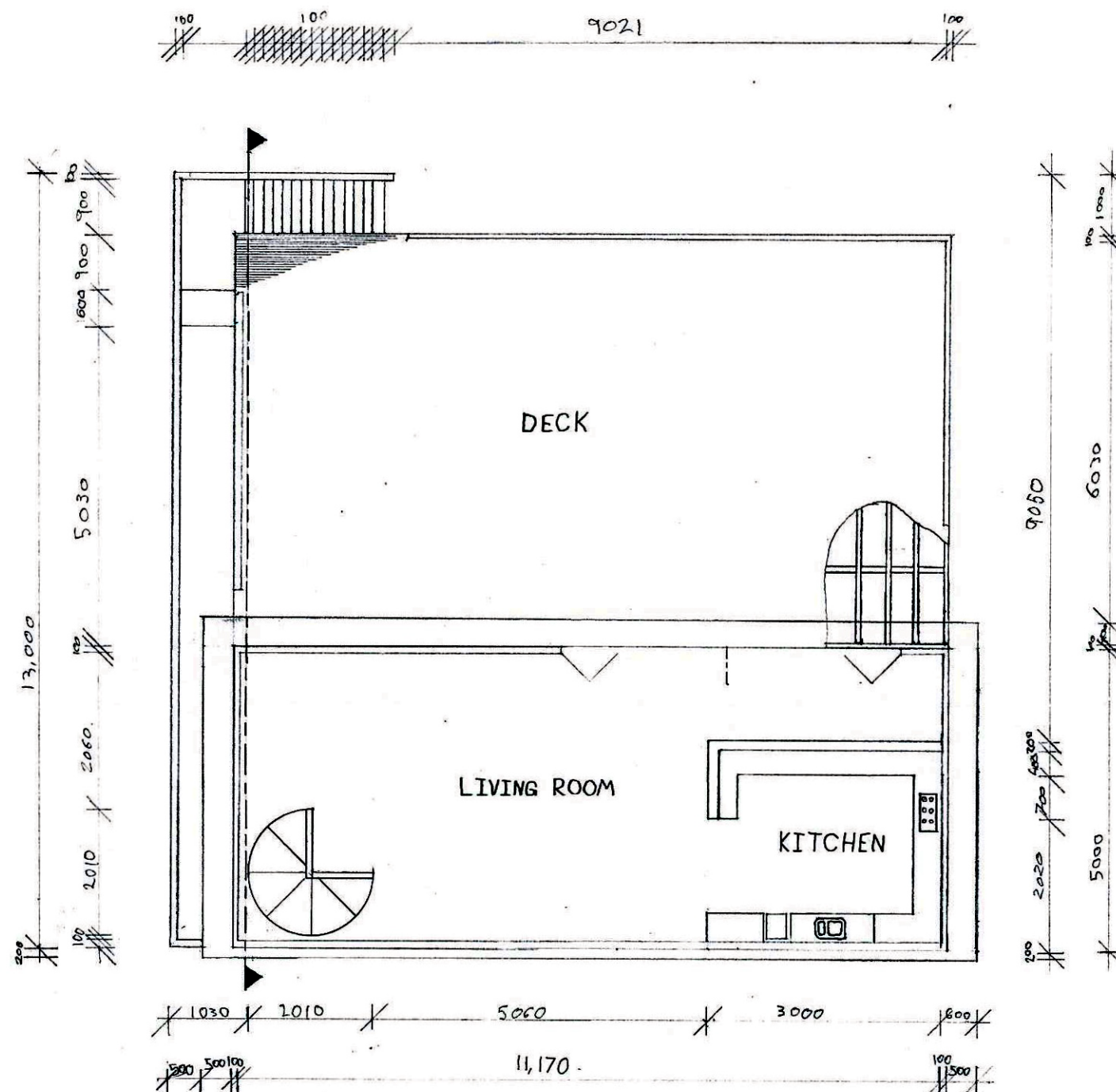
SCALE 1/200

HOLIDAY HOME-SITE PLAN

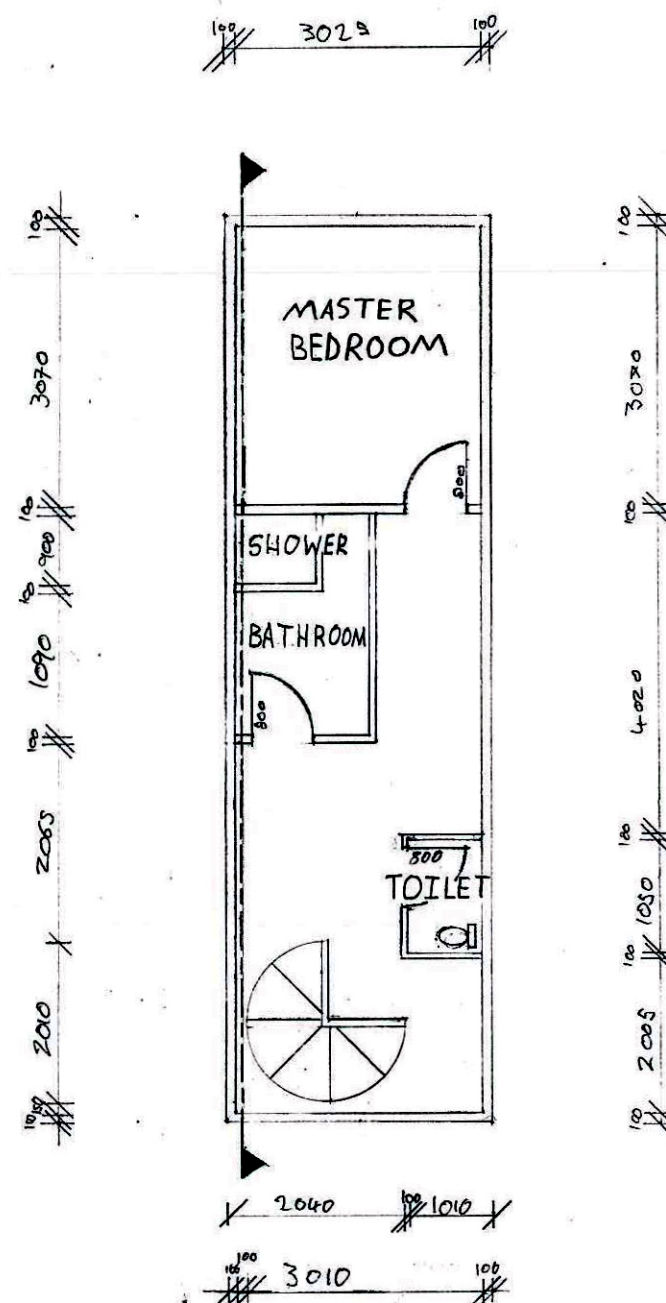
DATE 25/05/2015

SHEET 1/9

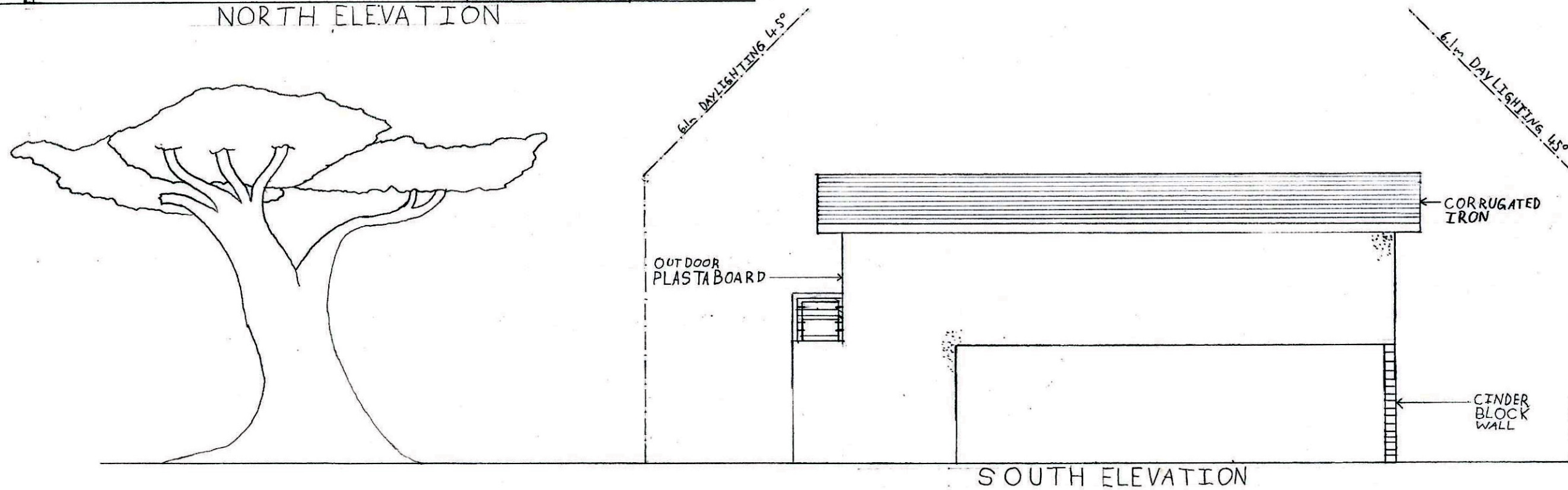
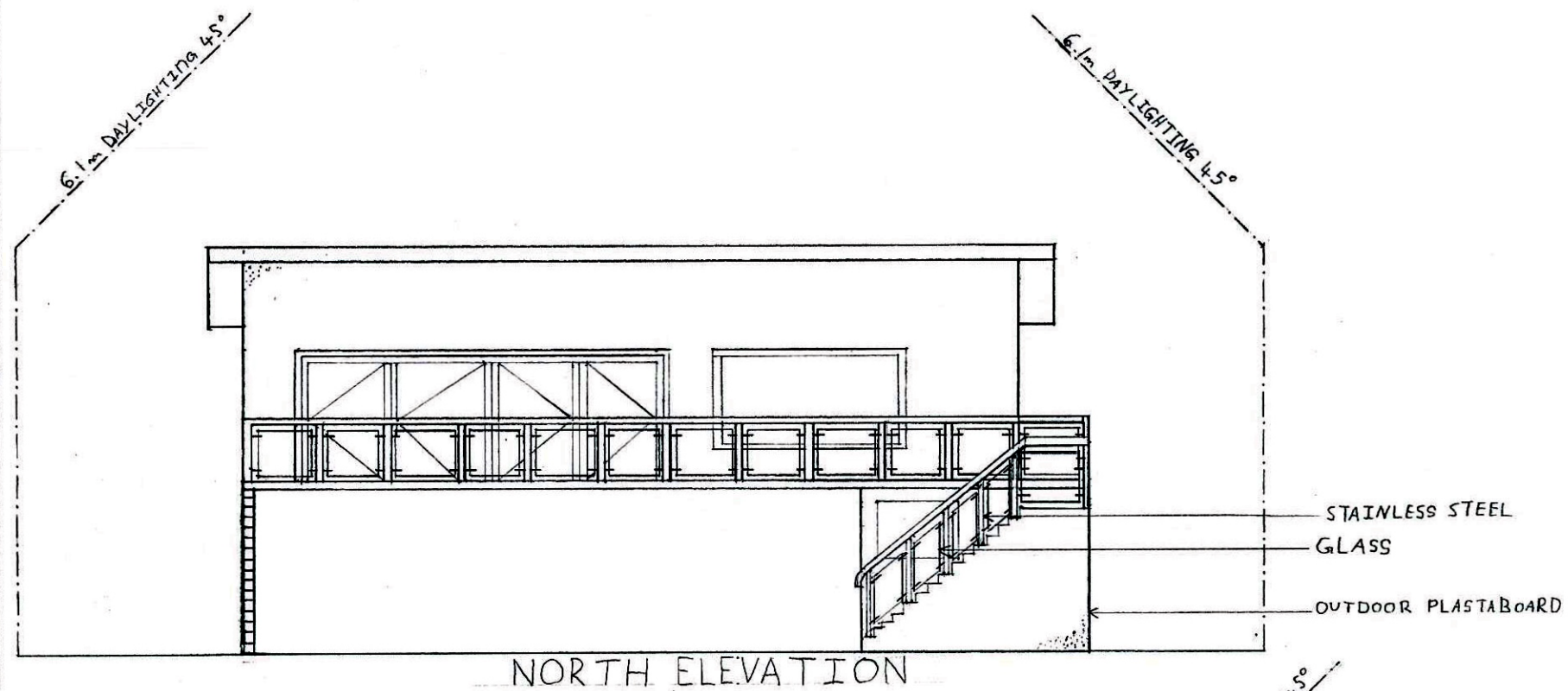
DIMENSIONS IN MILLIMETERS

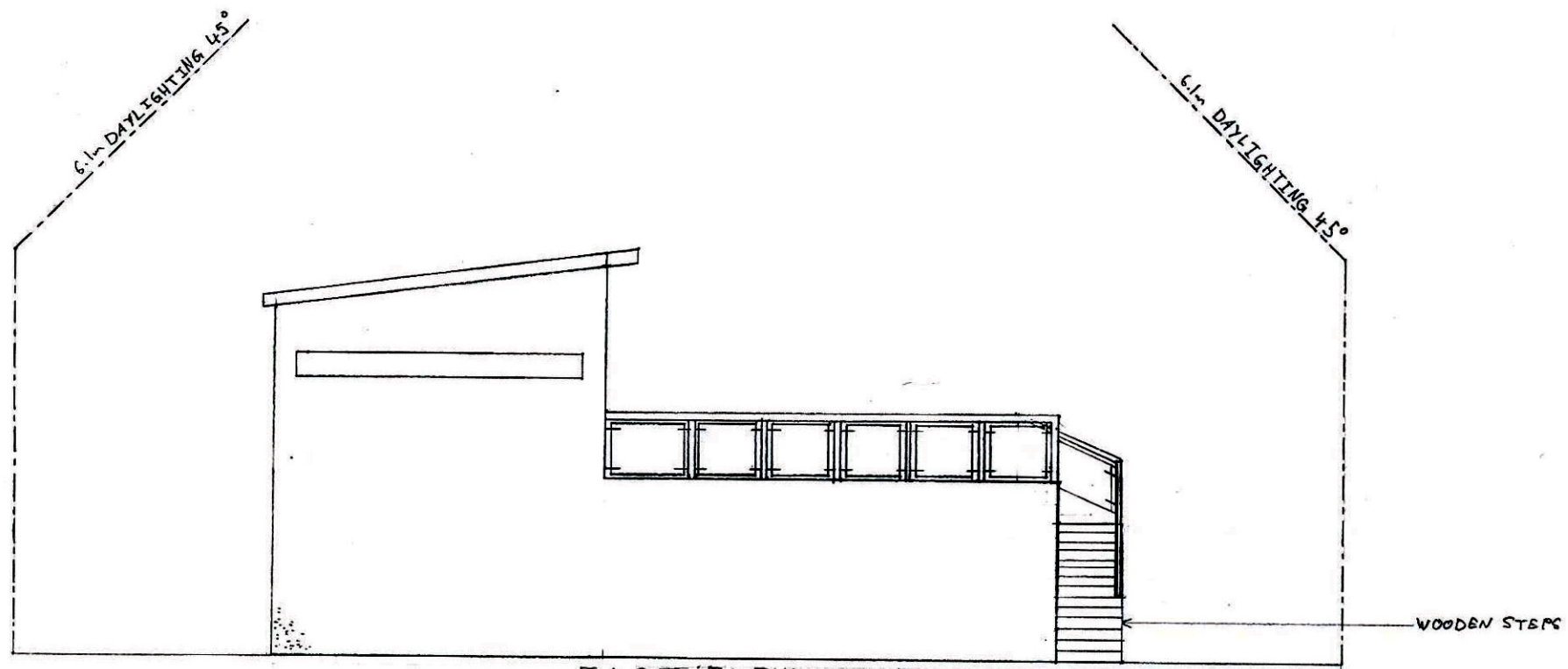




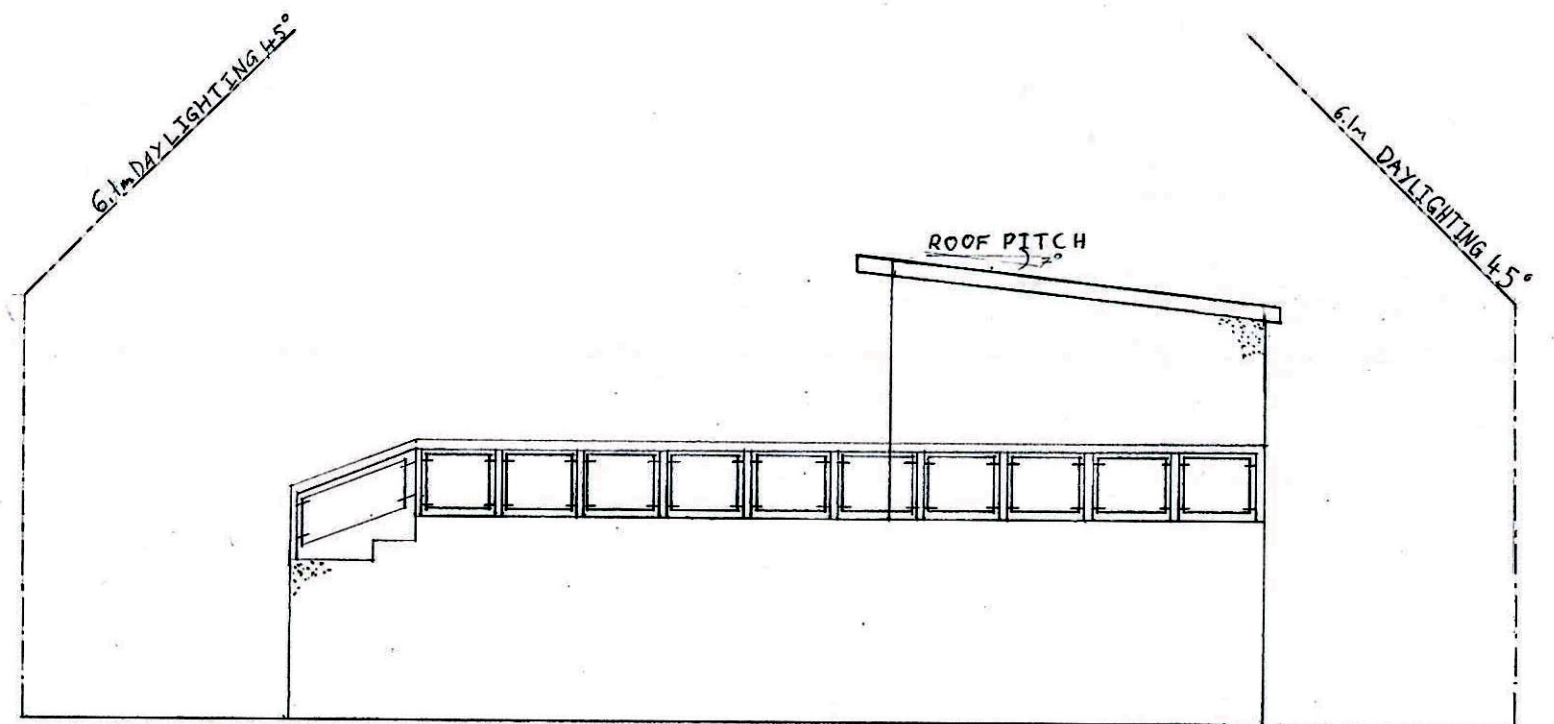






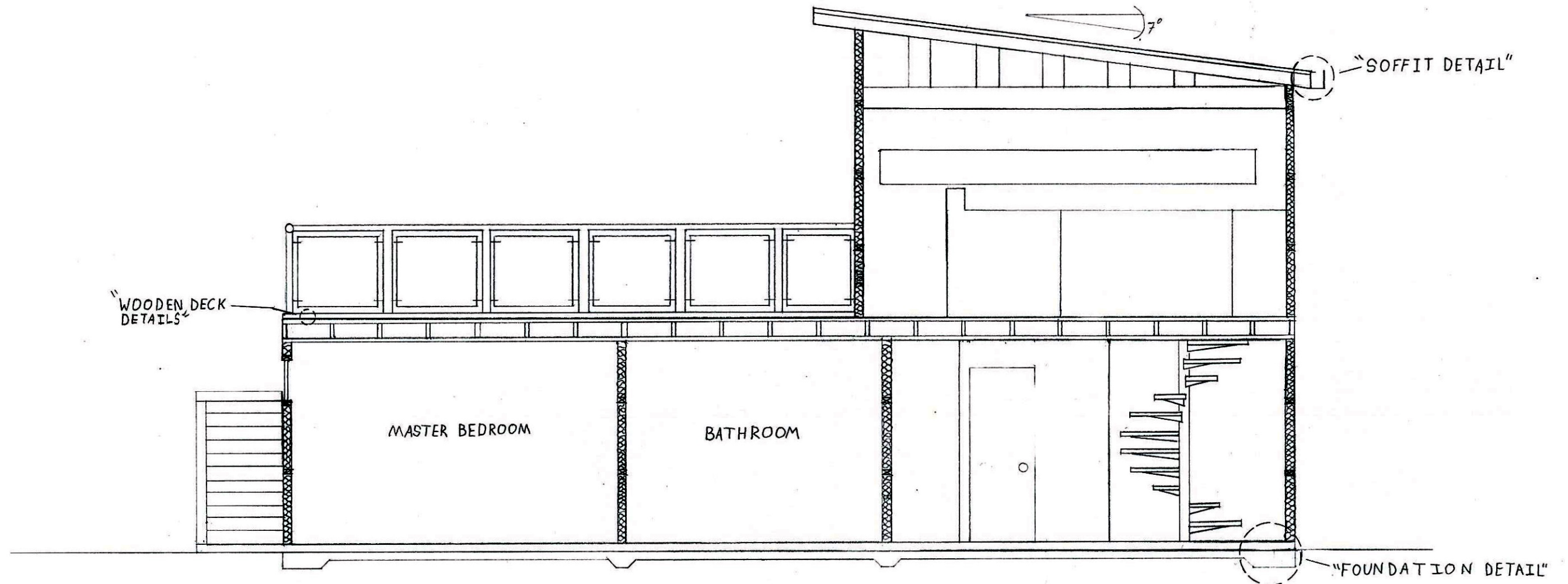


EAST ELEVATION

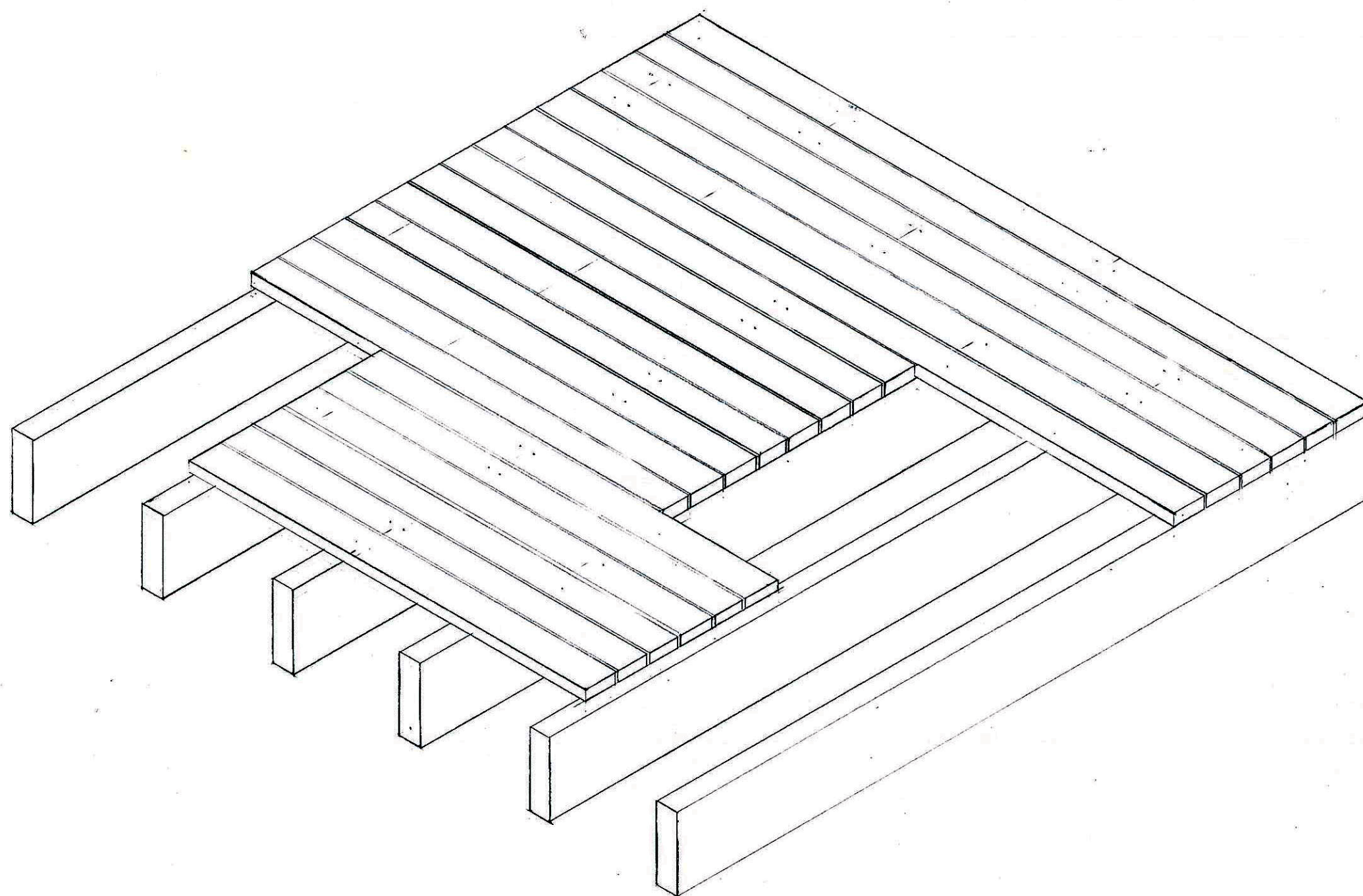


WEST ELEVATION







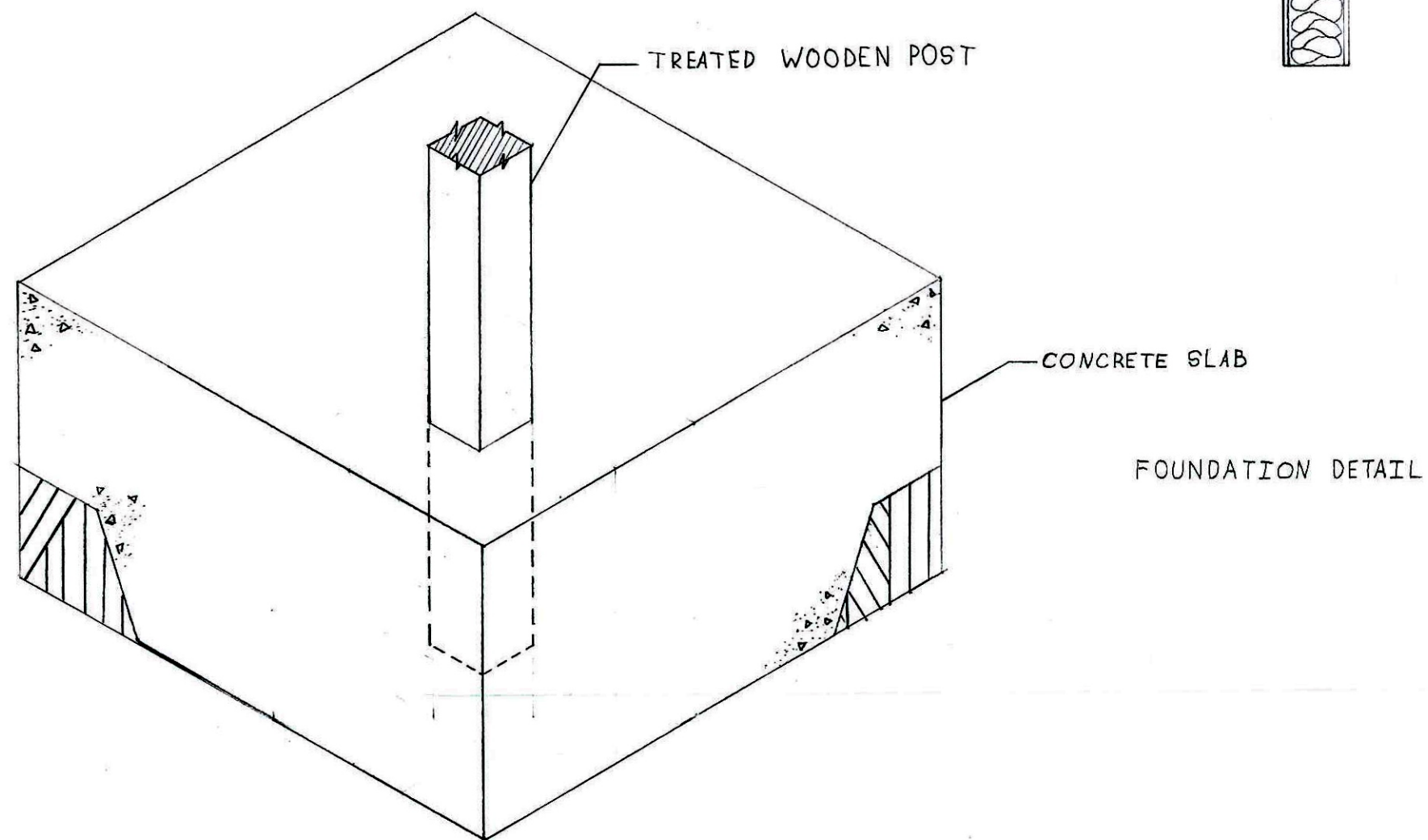
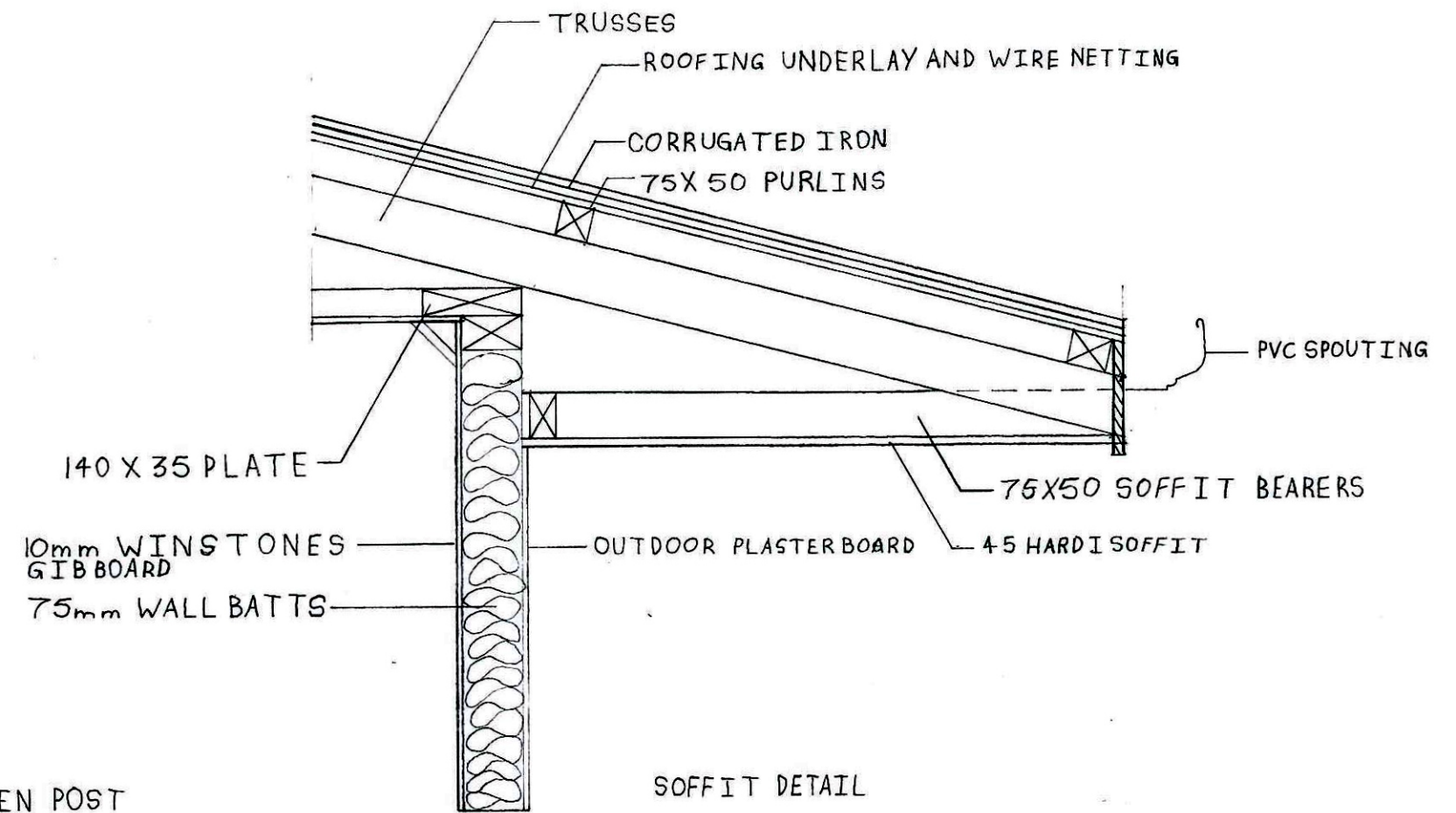


SCALE 1/10

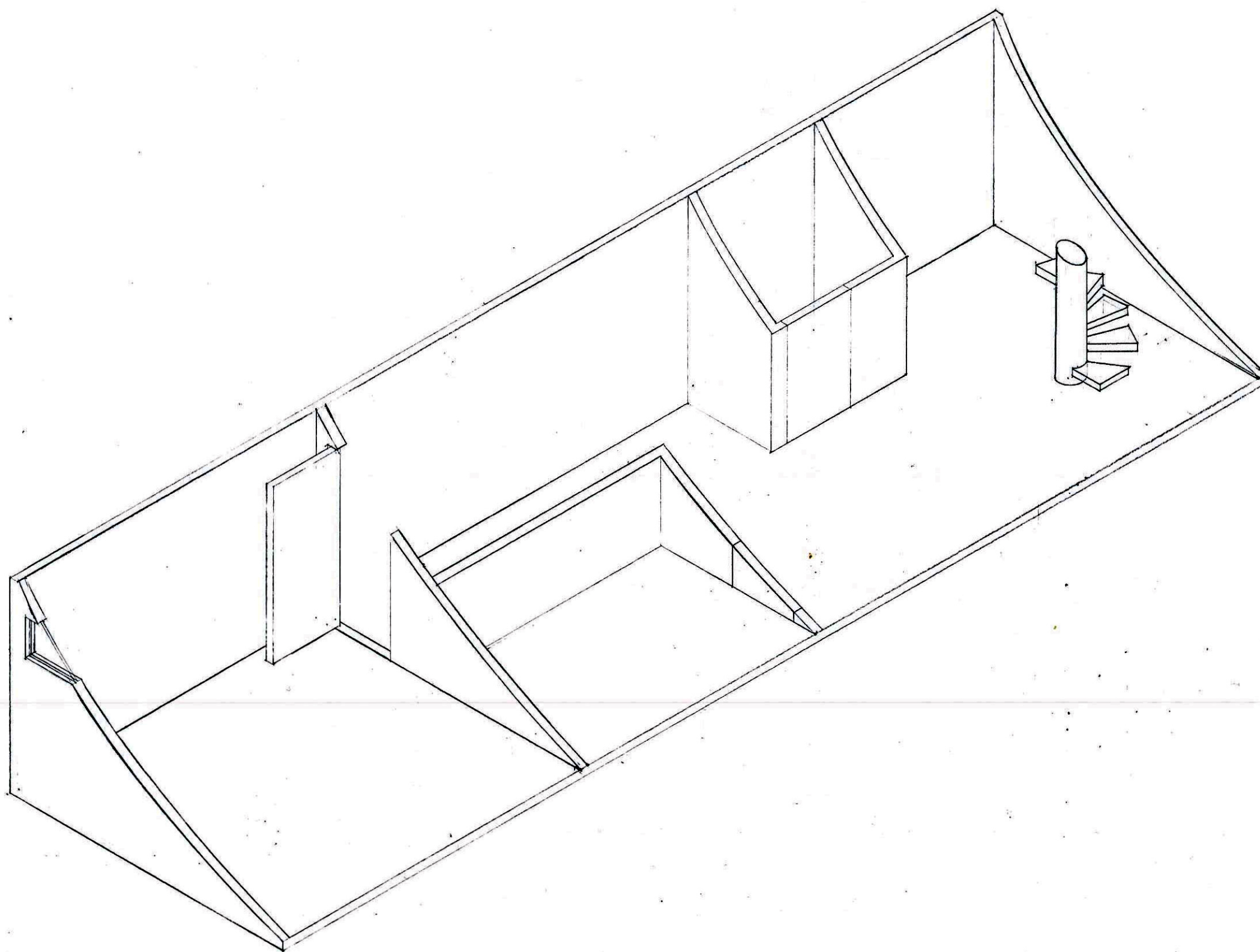
WOODEN DECK - DETAILS

DATE 25/06/2015

SHEET 7/9







SCALE 1/50

ISOMETRIC PRESENTATION

DATE 05/07/2015 SHEET 9/9