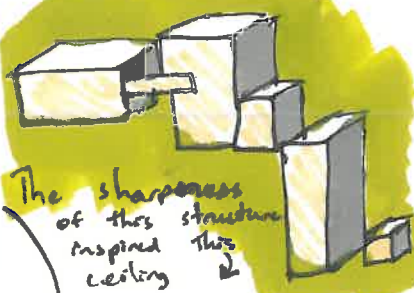


A minimalist window or glass door usually looks like this



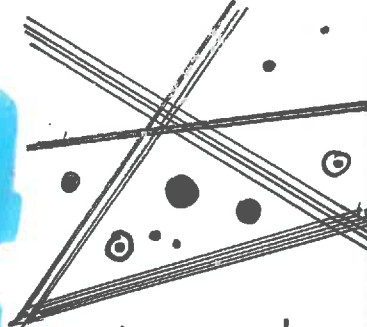
I liked the random assortment of triangular prisms



The sharpness of this structure inspired this ceiling

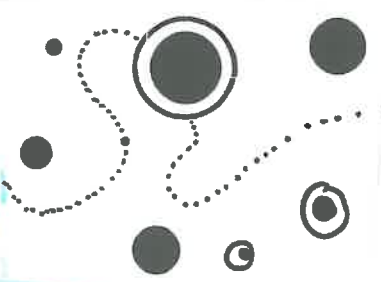
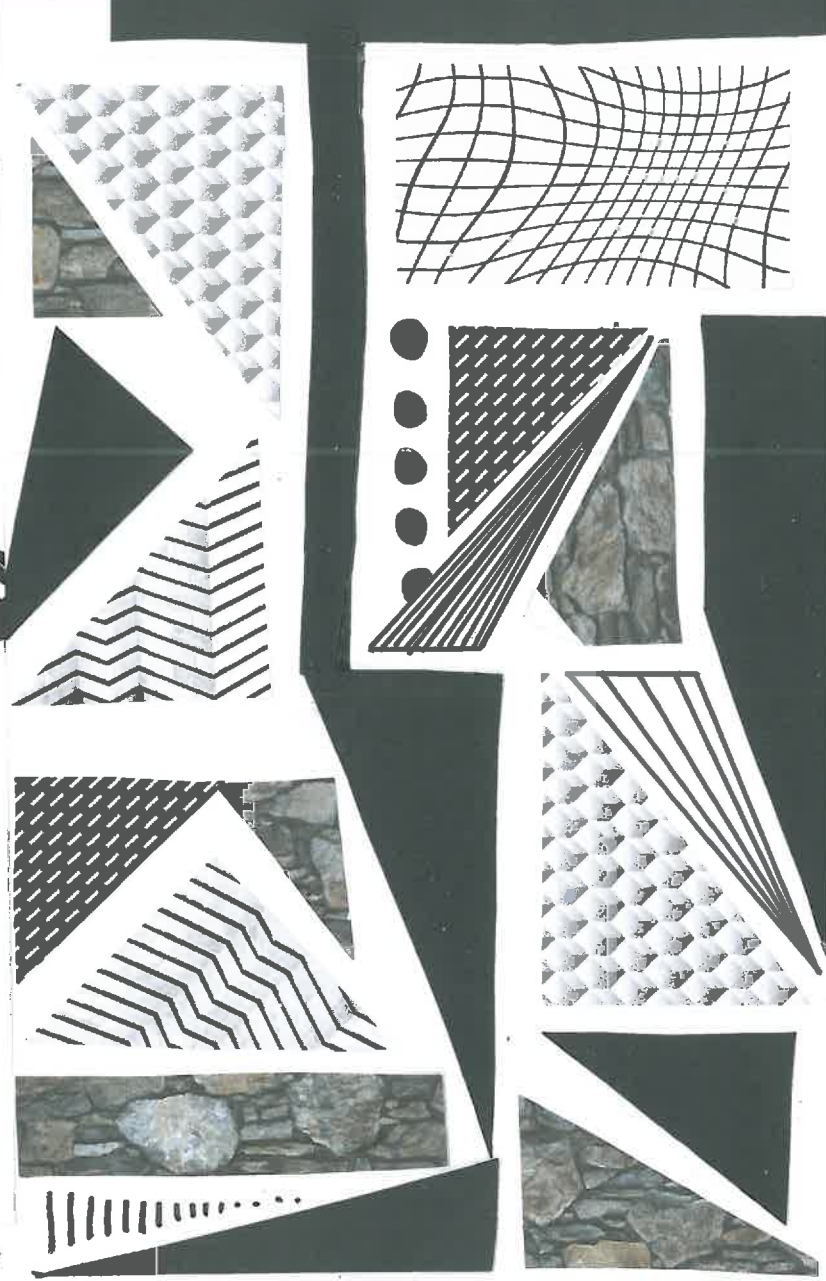
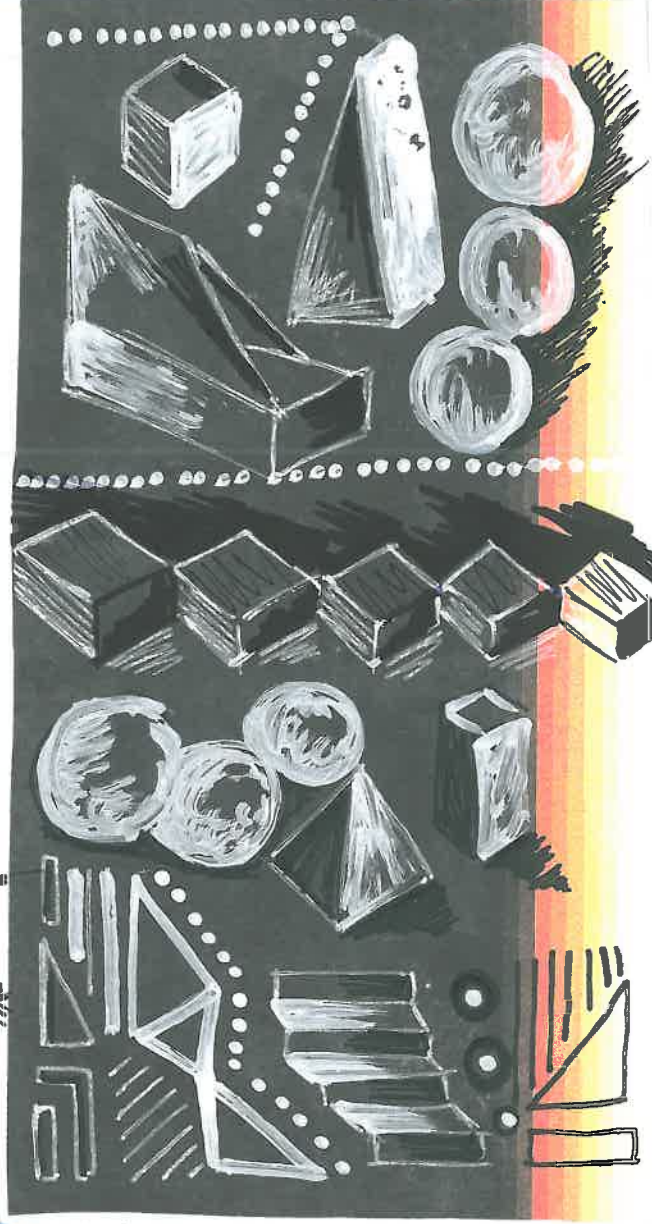
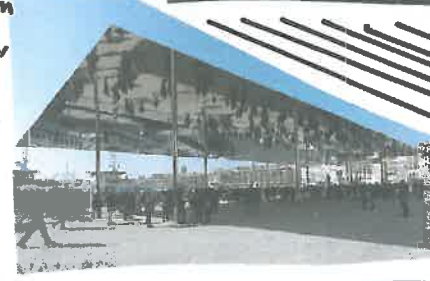


I like the angles of this structure



It also inspired the mirrored surface here

This pavilion has a mirrored sharp roof which inspired this shape

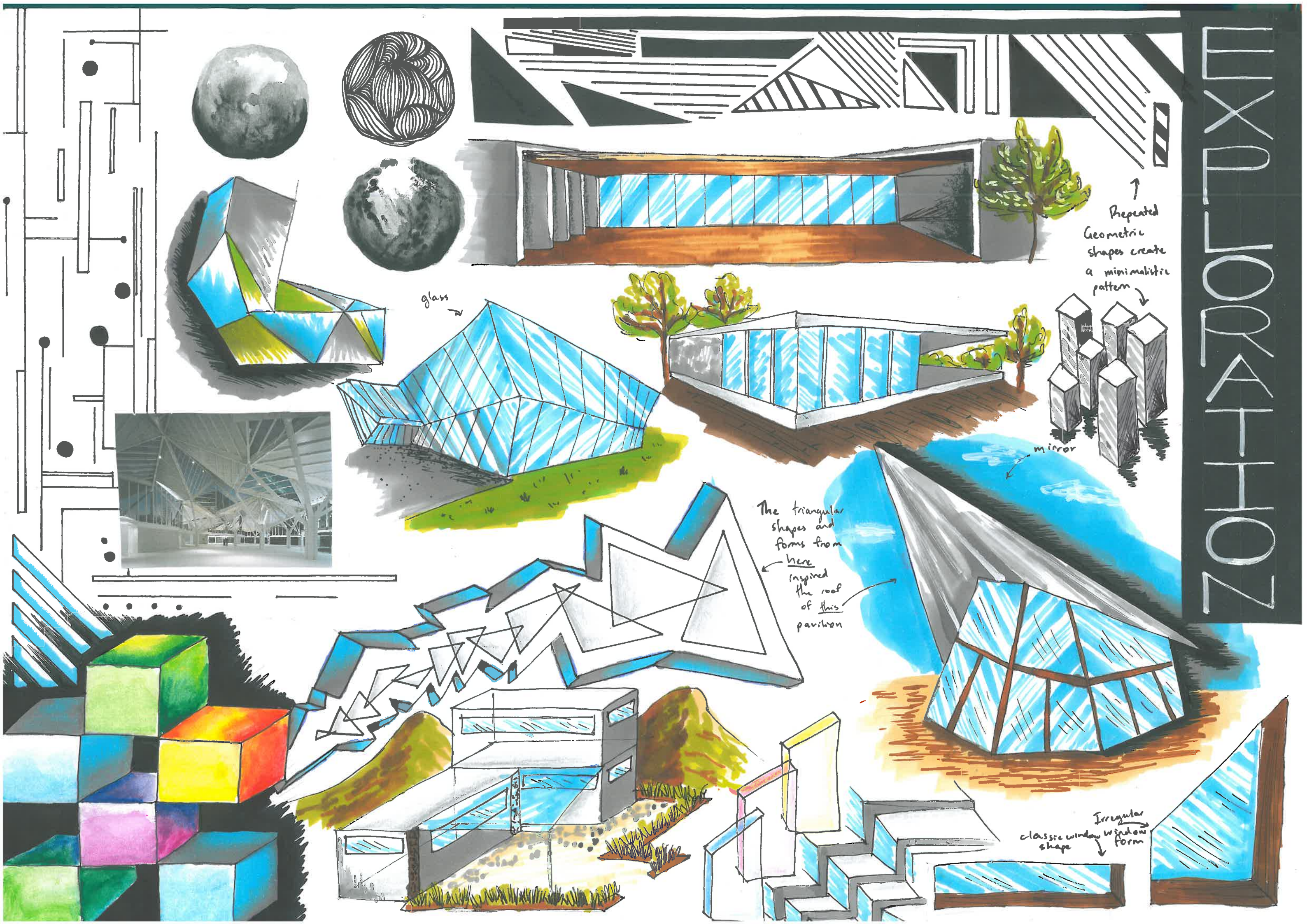


Either shiny surface or matte white surface

EXPLORATION

SHAPES & FORMS

EXHIBITION ZONE



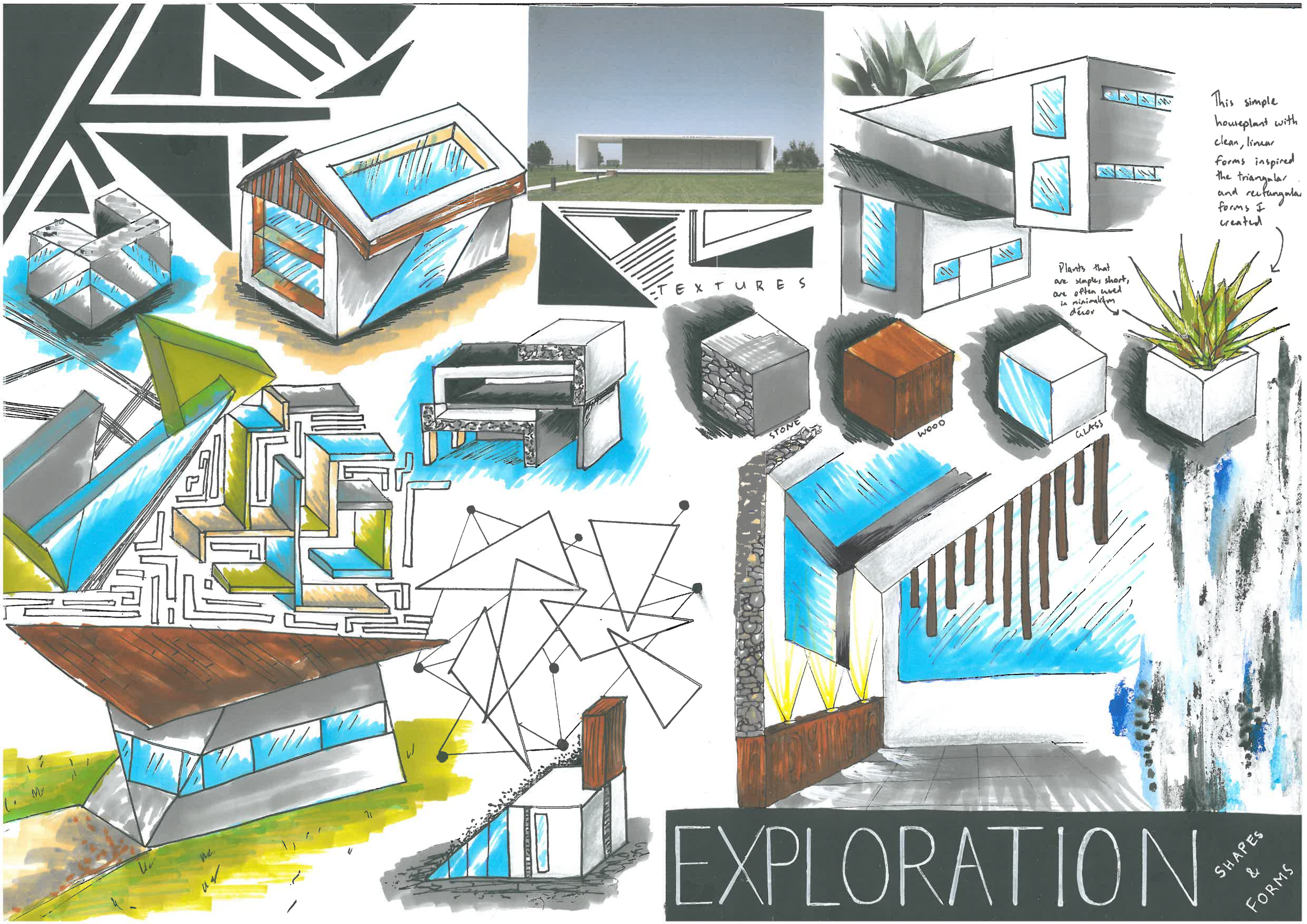
Repeated
Geometric
shapes create
a minimalist
pattern

mirror

The triangular
shapes and
forms from
here
inspired
the roof
of this
pavilion

Irregular
classic window
shape

glass



This simple houseplant with clean, linear forms inspired the triangular and rectangular forms I created

Plants that are simple, short, are often used in minimalist decor

TEXTURES

STONE

WOOD

GLASS

EXPLORATION SHAPES & FORMS

The main concept of these designs is to set up an exhibition pavilion next to the war Memorial Museum at the Auckland Domain

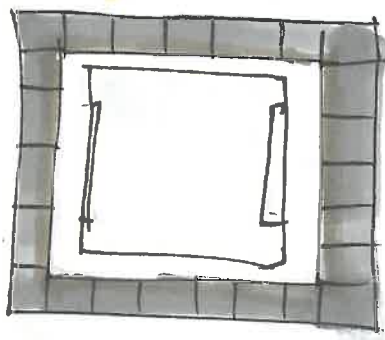
The pavilion will be a public space for a Summer programme of film screenings, presentations and exhibitions.

MUSEUM-PAVILION PLACEMENT PLAN:



My Pavilion design

FLOORPLAN



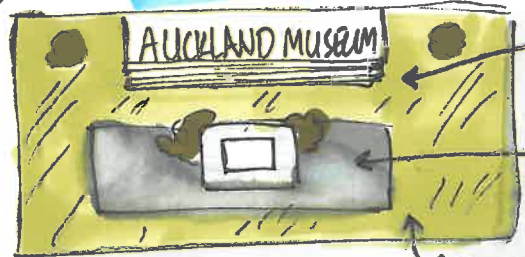
Floor will also be made of randomly placed wood panels. Creates cohesiveness and flow between ceiling design feature and flooring in slightly subtle yet very effective way.

Open space for different activities to take place

Makes it more versatile
Increases market value.

AUCKLAND DOMAIN

SITE PLAN:



Existing stairs

Existing concrete ground

Rectangular shape which complements square shaped pavilion

Grass to contrast the 'all concrete/glass' and fairly unnatural design

Wooden panning framing projector screen

FRONT VIEW



Floors lined with wooden panels (all one direction) for a minimal, cohesive look

- Type of wood that'll be used:
- Pine?
 - Pimu?
 - Oak?

(concrete slabs or tiles)

Drywall

Info about whoever's film this is (credits)
- producers
- directors
- actors
- artists

Glass

Promoting producers, films, artists

Concrete slabs through walkway

open door

View of DNG of the spaces

Both sides are symmetrical, each space is identical

Randomly placed wooden panelled ceiling with thin segments
- Creates interesting visual aesthetic
- eye catching feature
- Will create unique, pleasing shadows when natural sunlight filters through

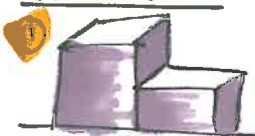
Film Screening

Corner of space where glass panel and drywall (for the film screenings) meet.

Simple geometrical shaped design to create minimalist look

Purposefully simple

Minimalistic and geometric designs that could be used:



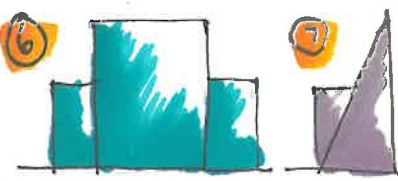
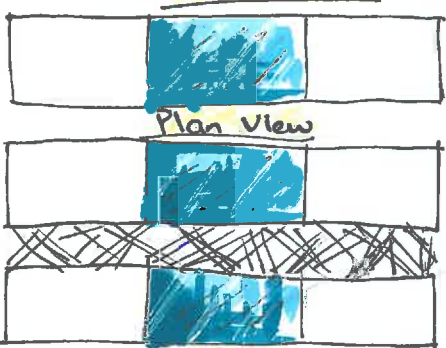
Glass

Drywall (interior)

SIDE VIEW

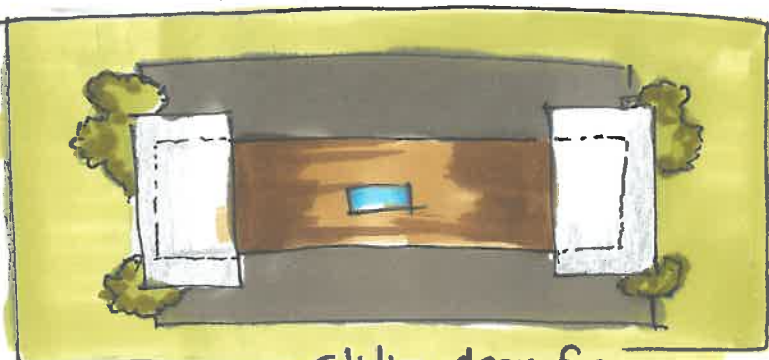
Front View

Plan View



INITIAL IDEAS 1

FLOOR PLAN



Sliding doors for entrance on either side - I'll blend seamlessly into glass panelling

Projector for film screenings

Sliding doors symmetrical to other side

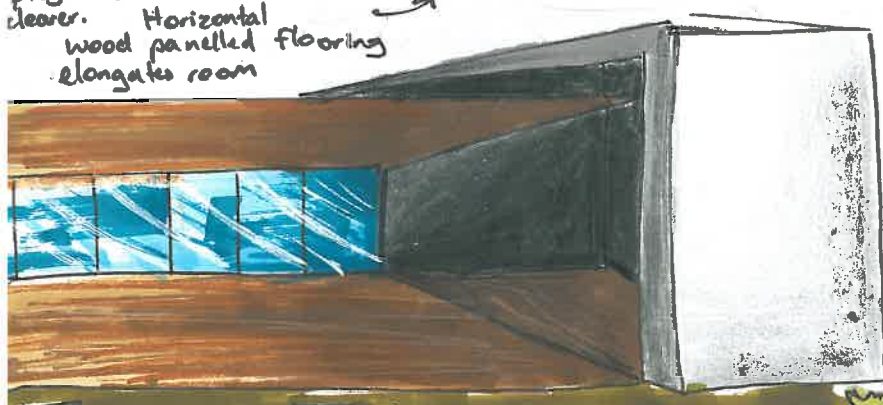
Exhibitional works of art, sculptural pieces can easily be put on and removed from the flat wood surface people to sit and watch the film screening

Wooden beam along bottom of doors for LED lights

Projectors fixed on either side of pavilion so film screenings can be displayed

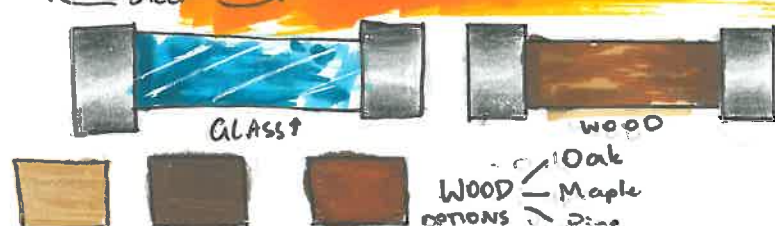
Double glazed glass - semi sound proof

Decided to add extensions on either side of pavilion. Since both longest sides are completely glass, so lots of light is let in. So I added solid extensions on those sides so film screenings from projectors will be seen clearer. Horizontal wood panelled flooring elongates room



(PLAN VIEW)

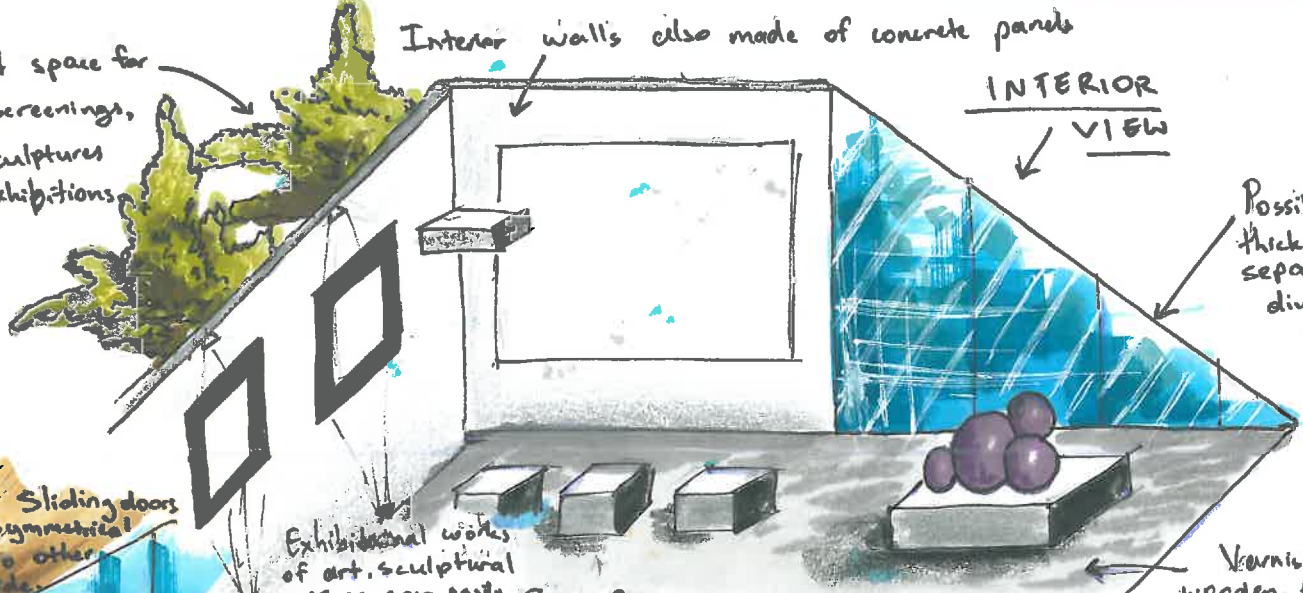
ROOF OPTIONS - MATERIALS



Perfect space for film screenings, art, sculptures and exhibitions

Interior walls also made of concrete panels

INTERIOR VIEW



Possibly thicker separation/divider lengths

INITIAL IDEAS 2

Entrance possibly on this side

Varnished wooden floors
Possibly Dark Oak wood colour + type

FLOOR PLAN



Exterior maybe made of concrete wall panelling advantages
→ pre-made
→ temporary
→ Easy assembly

Front panels of possible glass feature



(Possible feature)

Skylight to let in lots of natural light.

PLAN VIEW

Concrete panels (2D Triangular shaped) Top view

RIGHT HAND SIDE VIEW

FRONT VIEW

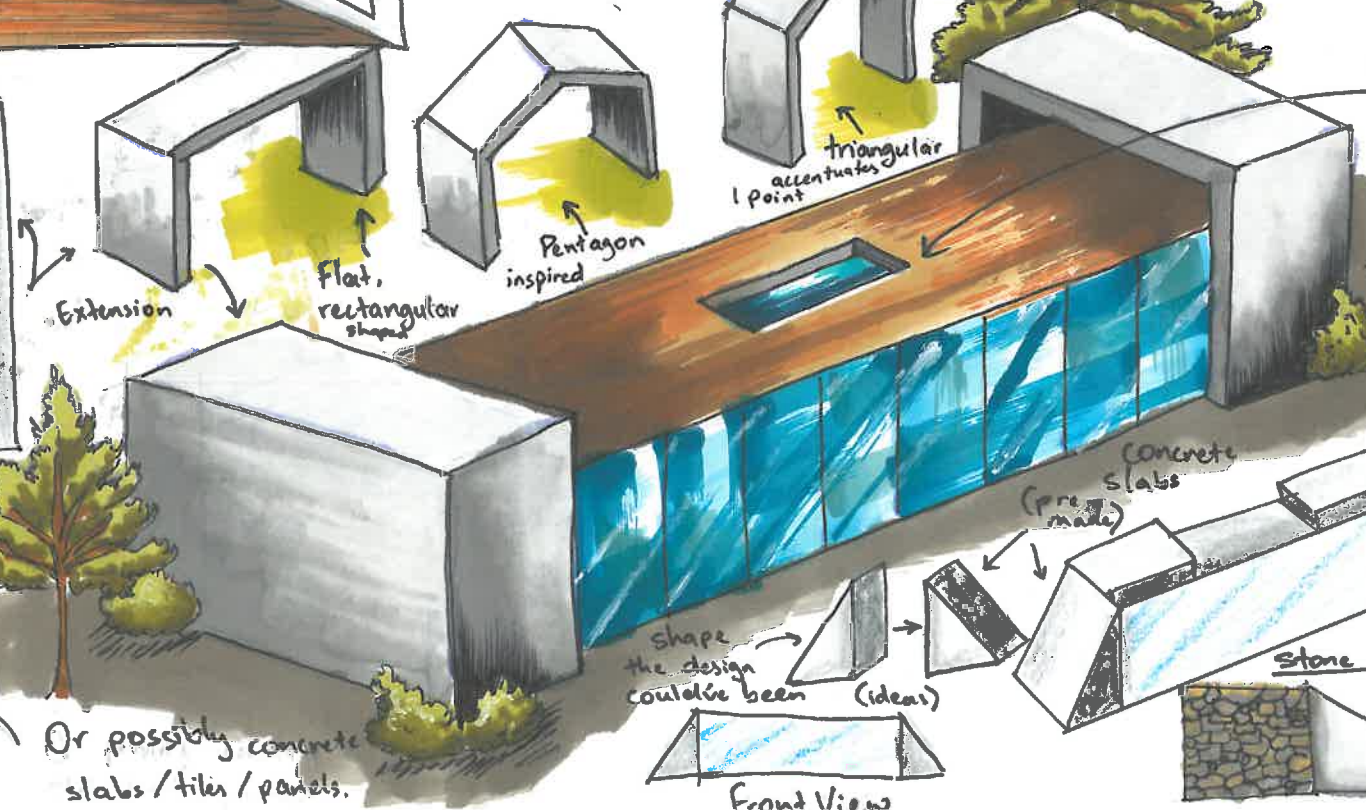
LEFT HAND SIDE VIEW

I chose to opt for a cement board exterior materials as it adds to the minimalist feel/look

Flatpack and foldable screens can create division in the space if ever needed for a specific event like a speech room.

ALTERNATIVES

For extensions off of the wall



Shape the design could've been (ideas)

Front View

Stone

Wood

Brick

Or possibly concrete slabs/tiles/panels.

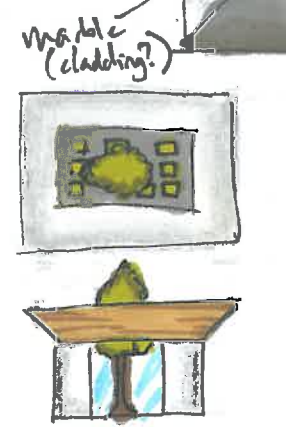
INITIAL IDEAS 3

Started roof also let's natural fresh rain water nourish the tree which cuts down on water & energy costs. Water & energy efficient.

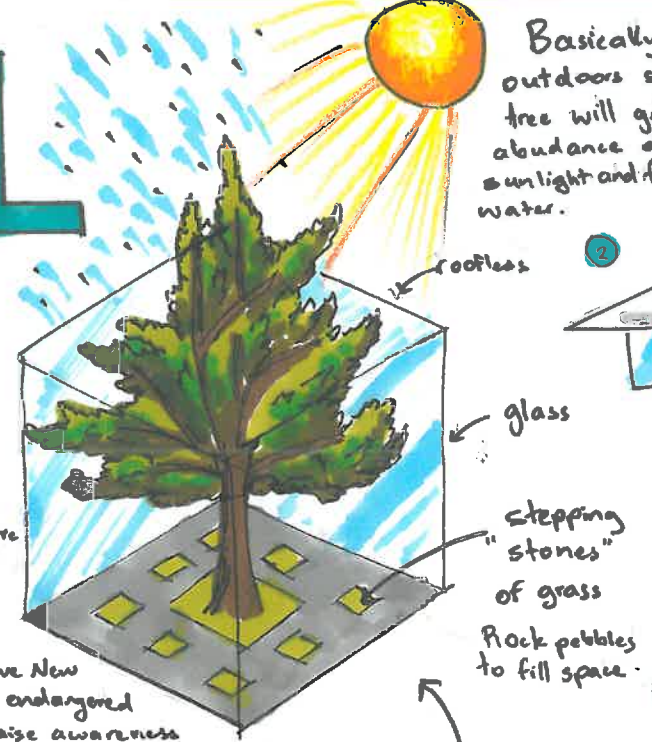
Slanted roof sloping towards centre feature of pavilion draws attention to indoor/outdoor focal area

Same wood design on the underside

Possible materials:
- light coloured, concrete panels
- drywall
- marble cladding

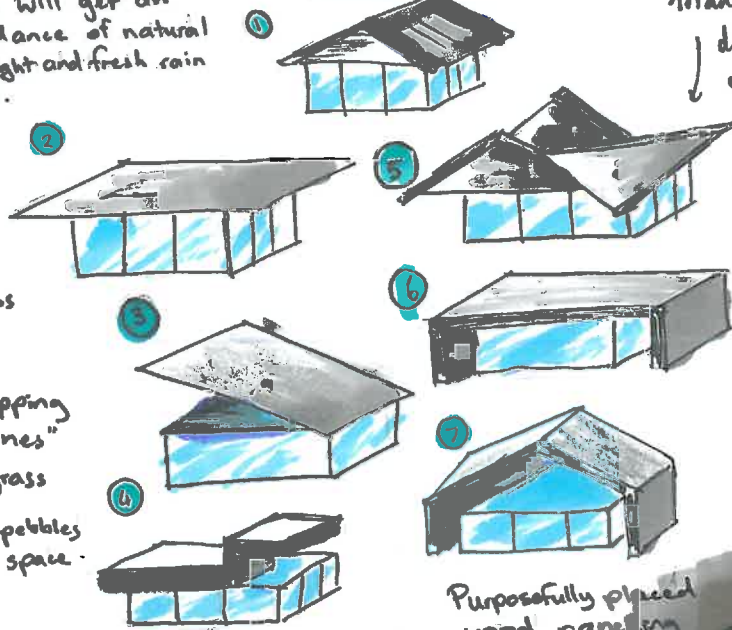


I thought this was an extremely interesting feature to add to the centre of my pavilion. I creates a modern indoor/outdoor feel and will let in a lot of natural light since it's roofless. It'll be a native New Zealand tree and possibly enlarged like a kawri tree to raise awareness for it.



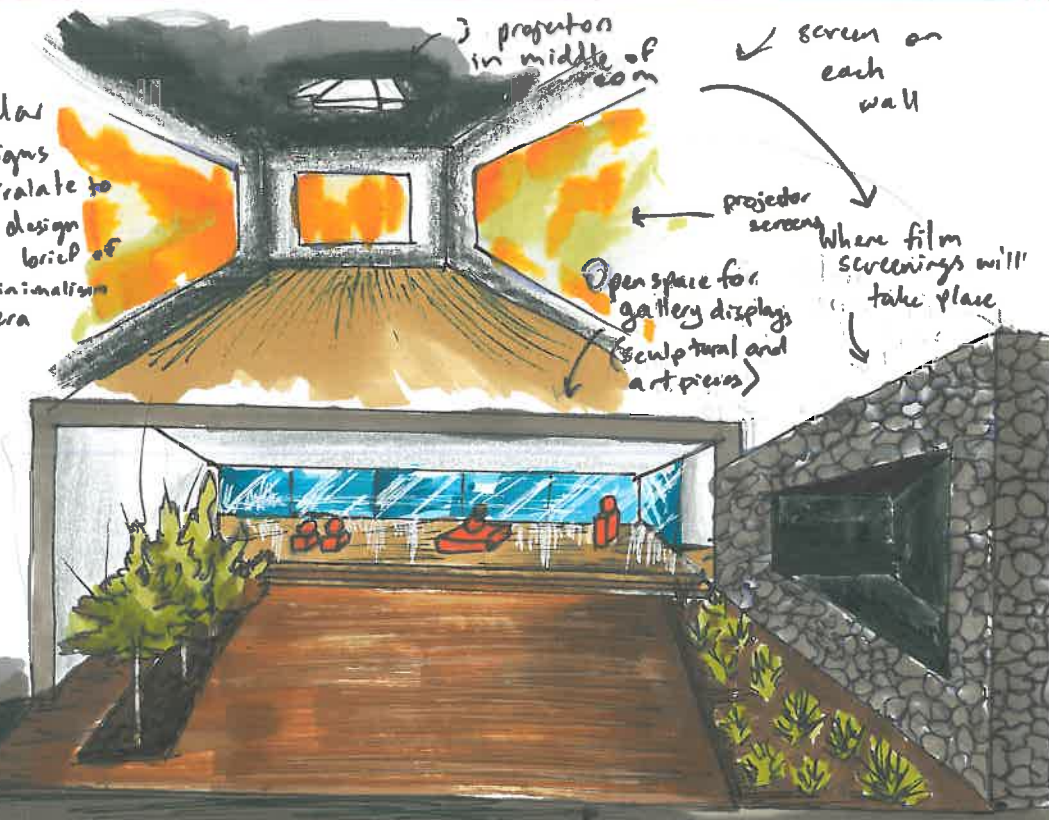
Basically completely outdoors so the tree will get an abundance of natural sunlight and fresh rain water.

Possible roof Design



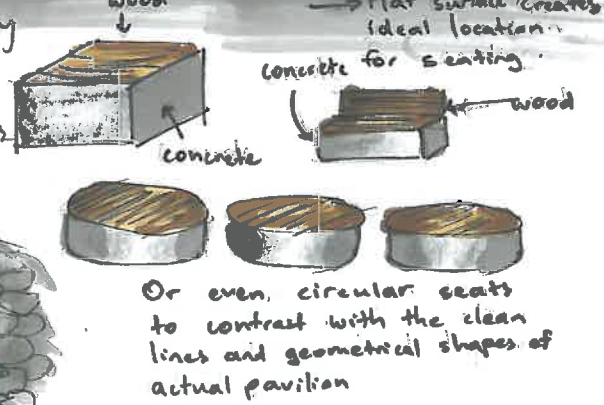
triangular designs correlate to design brief of minimalism era

Purposely placed wood paneling placed in certain directions that'll accentuate slanted roof shape of the modern pavilion



3 projection in middle of room
screen on each wall
projector screen
Open space for gallery display (sculptural and art pieces)
Where film screenings will take place

Possible seating area (outdoor)
→ Flat surface creates ideal location
concrete for seating
wood



Or even, circular seats to contrast with the clean lines and geometrical shapes of actual pavilion

view of pavilion without roof

Room specifically for film screenings

glass
Large, oversized concrete/cement tiling
oversized is modern and on trend

marble

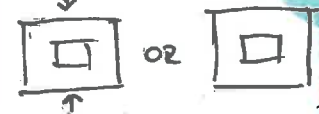
Decided to add a garden type feature so I could add greenery and landscaping to my design. Will go perfectly with New Zealand's (and specifically the Domain's lush, green foliage.

floor lighting in every corner

Exhibitional pieces

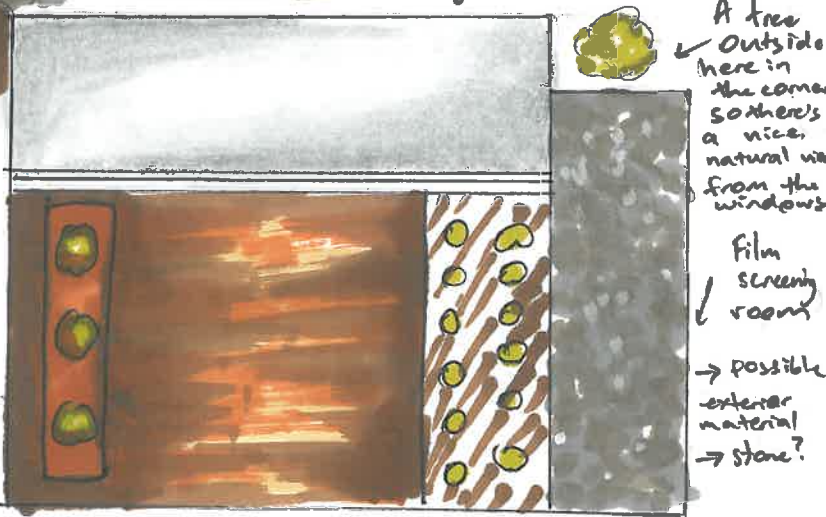
I took inspiration from this minimalist design of simple tiles of feature

Entrance maybe on only 1 or 2 sides → as in 2 pages
entrance



FLOOR PLAN

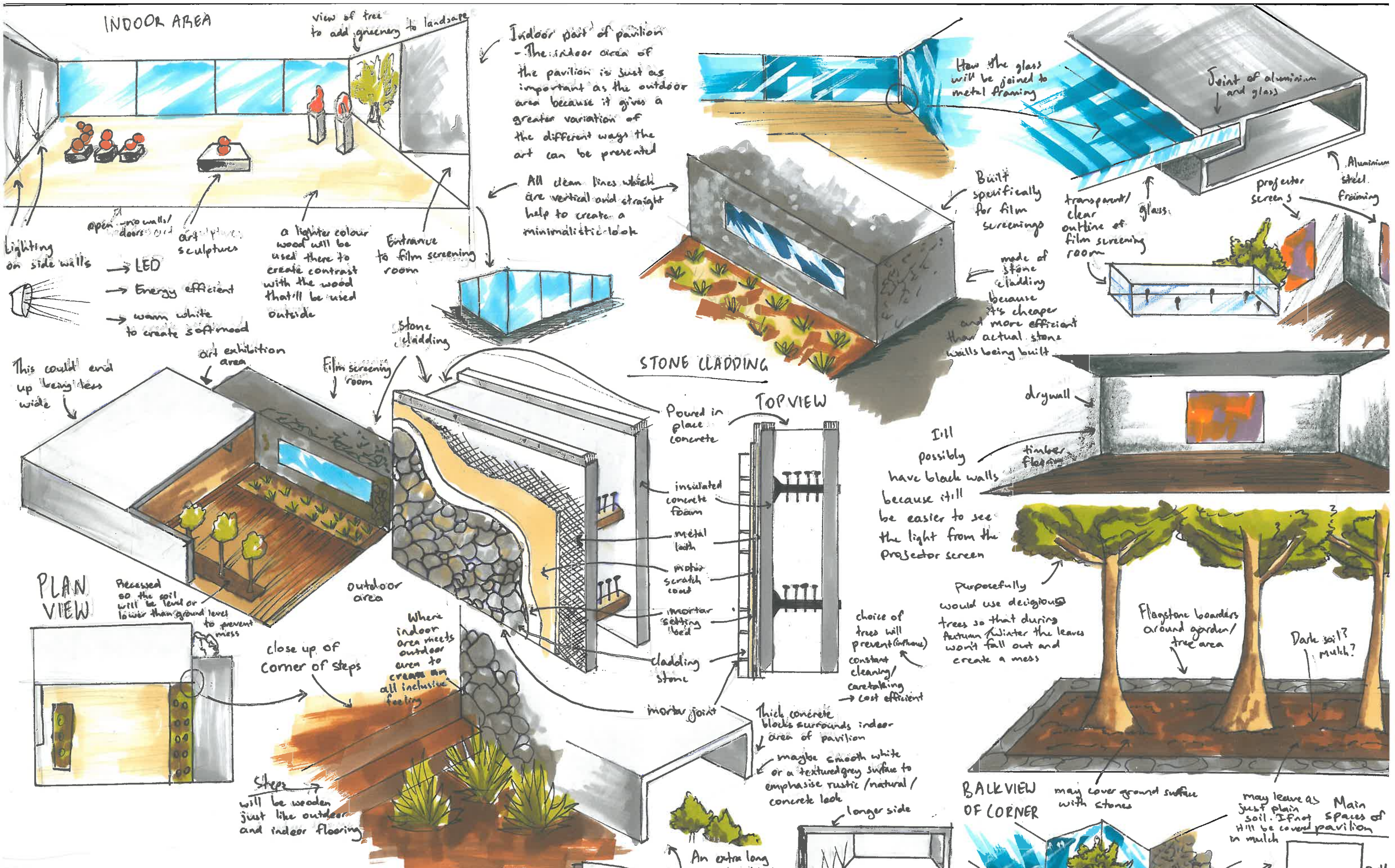
Art display/exhibitional/sculptural area



A tree Outside here in the corner so there's a nice, natural view from the windows

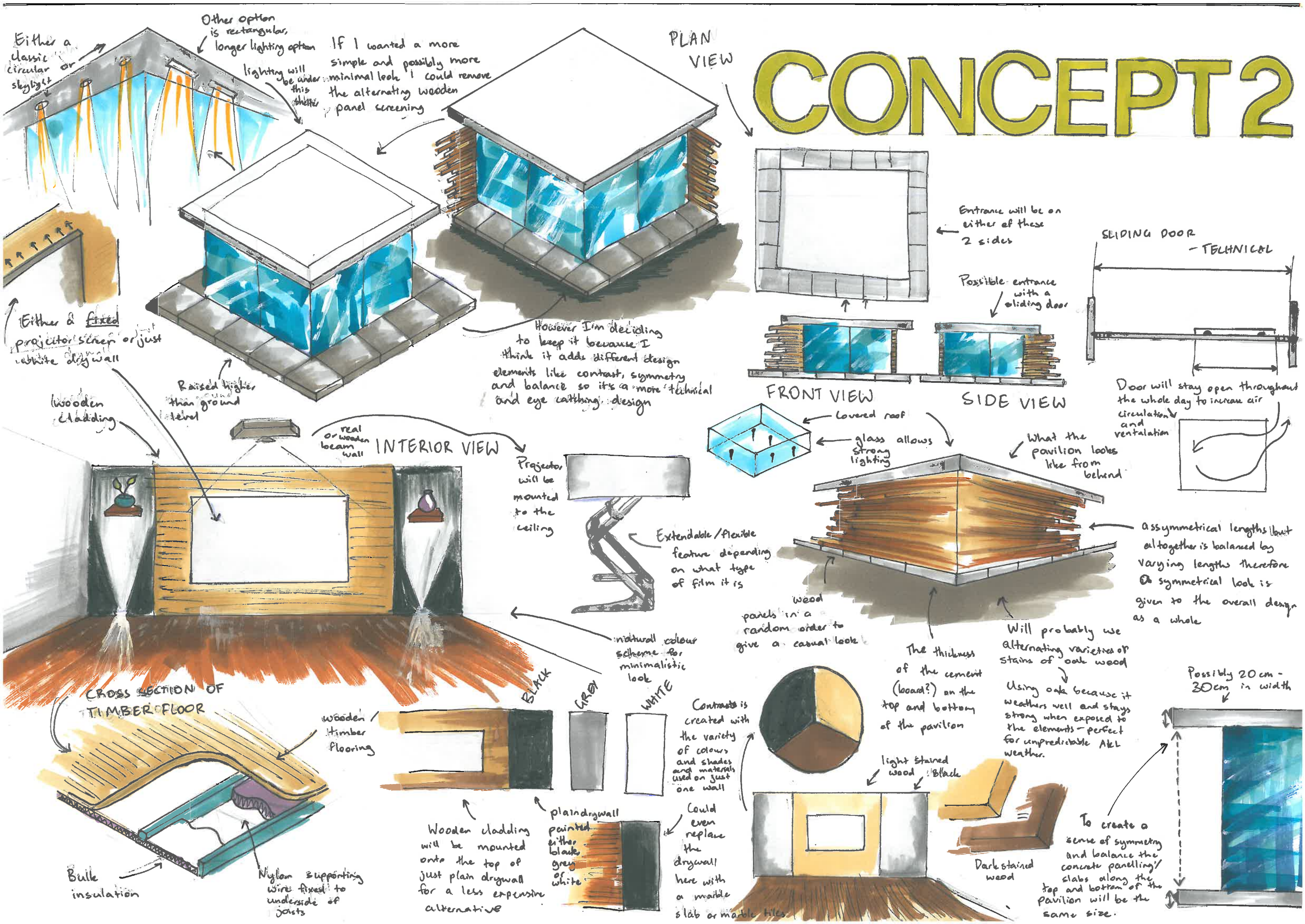
Film screening room
→ possible exterior material → stone?





CONCEPT 1

CONCEPT 2



CONCEPT 3

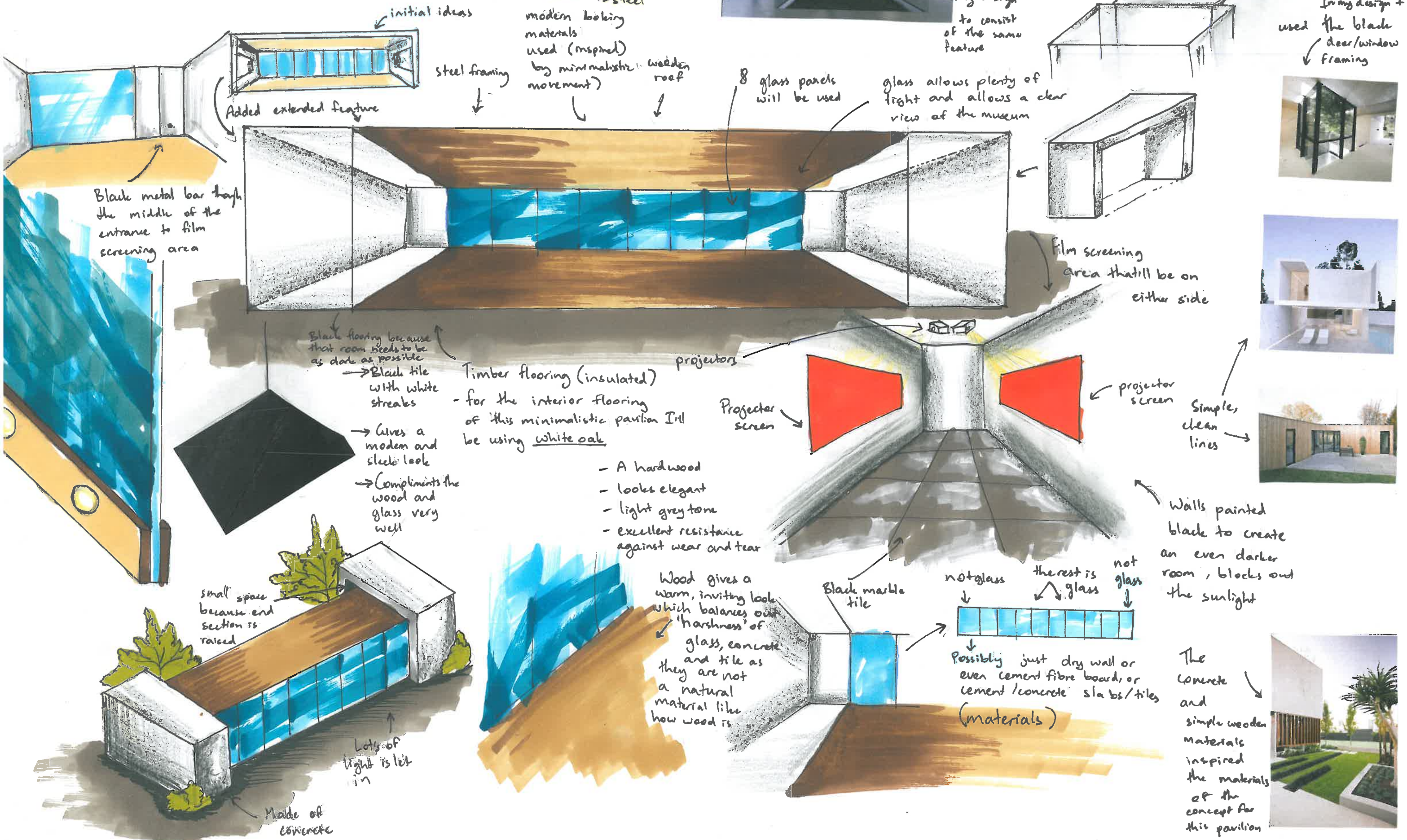
- cement
- glass
- wood
- steel



The elongated glass paneling along either length of this space inspired my design to consist of the same feature

Added in a skylight for visual interest in the ceiling and to let in sunlight in the centre of the pavilion

In my design I used the black door/window framing



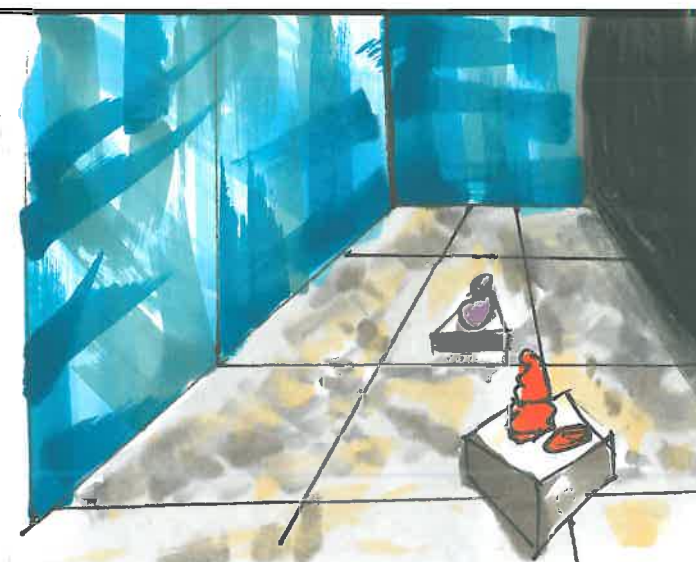
DEVELOPMENT 1

The disadvantages of tile is that it's expensive, and a time consuming, labour intensive installation process

Another cheaper and more time efficient flooring alternative to tiles is vinyl flooring

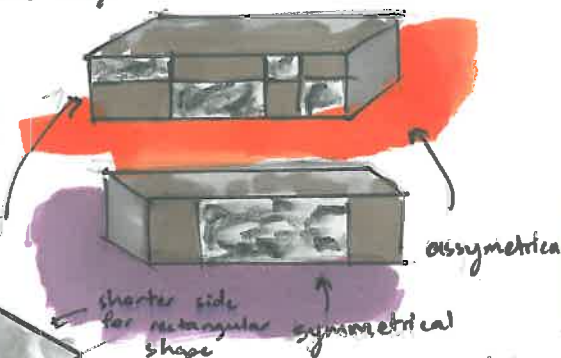
Advantages of Tile:

- Cold during the summer months which will be cooling in NZ heat
- Don't attract dirt, dust, pollen etc so allergy friendly
- Easy to clean which is particularly advantageous because it's a public space



Floor tile
Plywood subfloor
Backboard (for ceramic and stone tile)

Could arrange tiles differently



Because this is the film screening room, it makes more sense for it to be completely dark so the films or images will show clearly during the day

LED lighting

The flooring of the art exhibition area of my pavilion previously was going to be a light oak wood colour/shade

Would brighten up the area
Contrast is created with the dark wood against the white tile

I've decided that instead of using a light oak wood flooring material, I'm going to use tiles. Tiles will aesthetically look better and will be more cooling during the summer months.

Advantages

- water resistant
- stain resistant
- durable as it stands up well to heavy foot traffic
- comes in a large variety of colours, patterns including life-like wood grains
- Extremely inexpensive

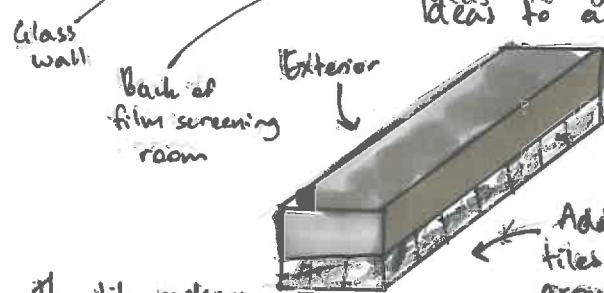
Looks too bland if I remove the window and don't find an aesthetic alternative

BACK VIEW OF RIGHT HAND SIDE



Removing the window from the film viewing room increases functionality and purpose of pavilion but looks much more bland and lacks interest

Ideas to add visual interest

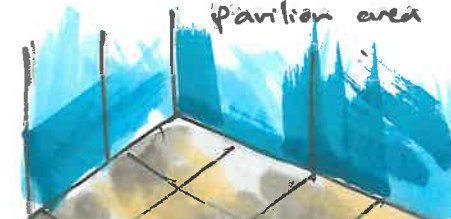


The tile replaces the windows to still keep the visual interest

Add black marble tiles along the ground perimeter of the room



The same tile on the exterior of the film viewing room could be used in the indoor / covered pavilion area



PLAN VIEW

White streaks within tile to give a marble, mader look
The black / dark tiling will create a seamless flow because there's black tile in the film screening room as well

Dark wood in outdoor area

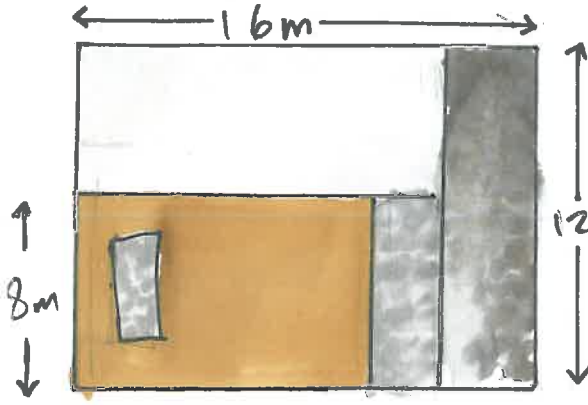


Black or dark tiles will balance out the darkness of the other 2 areas

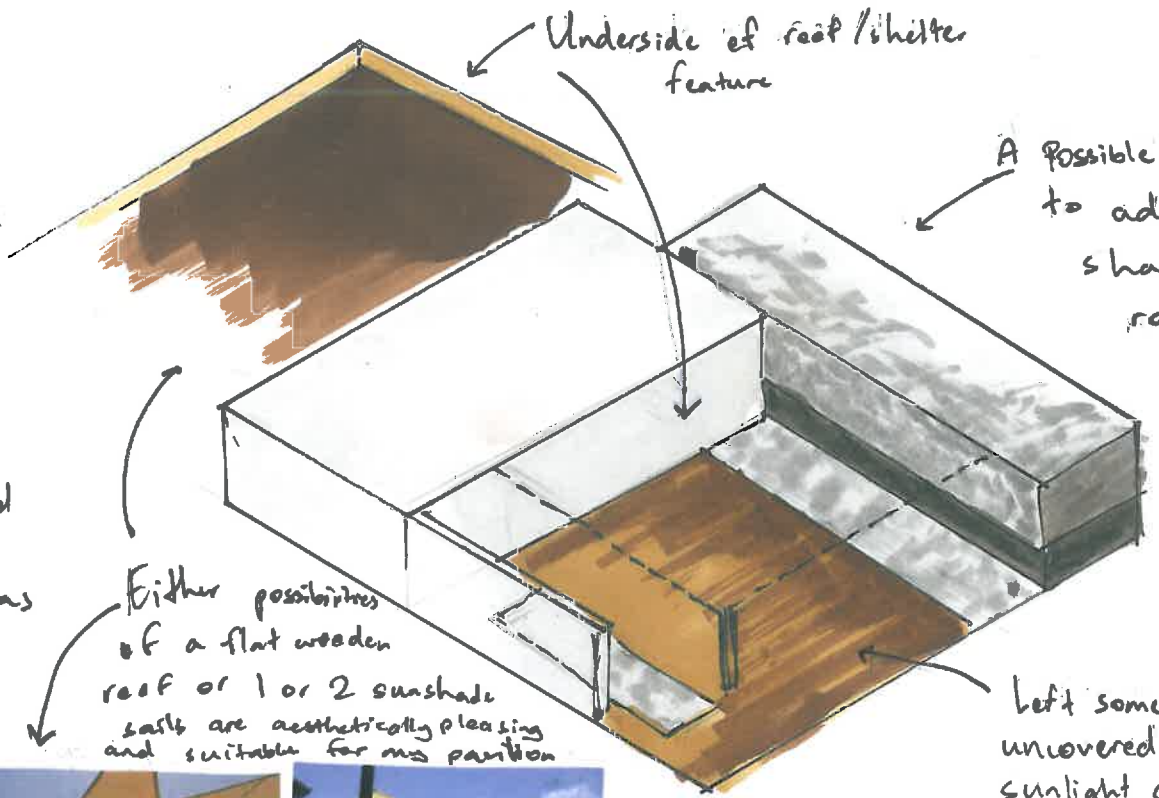


The brief states that the total area of the pavilion needs to be 200m²
 So I'm choosing to make my pavilion 16m x 12.5m

DEVELOPMENT 2



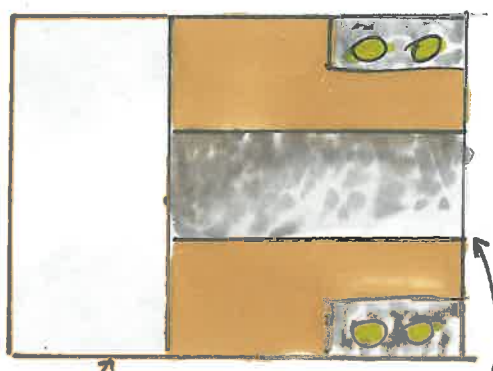
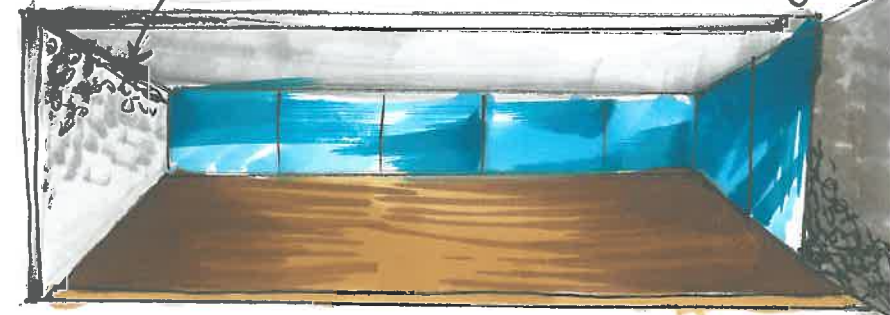
Current placement and division of space between sections



Underside of roof / shelter feature

A possible development is to add to provide a shaded area to a roof

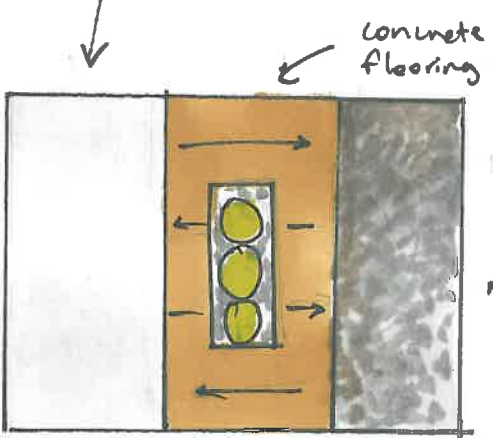
To create an even more cohesive look in my pavilion, I've decided that instead of having this wall be made of plain concrete, I would cover it with the same stone cladding as the exterior of the film screening room



This layout plan for the pavilion is another option and offers 2 separate outdoor / deck areas

art exhibitional area

Trees split up film screening room



concrete flooring

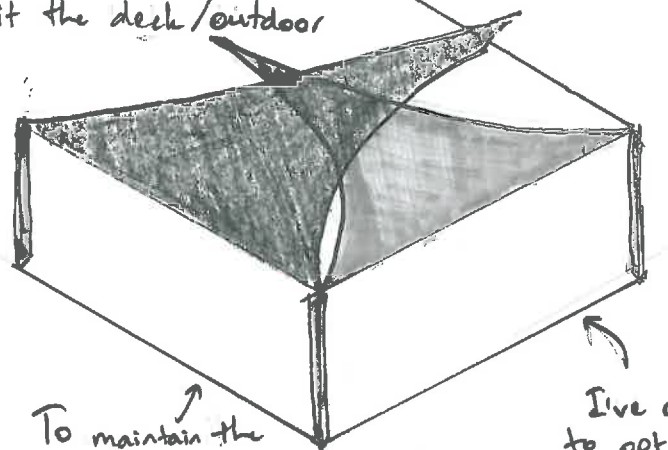
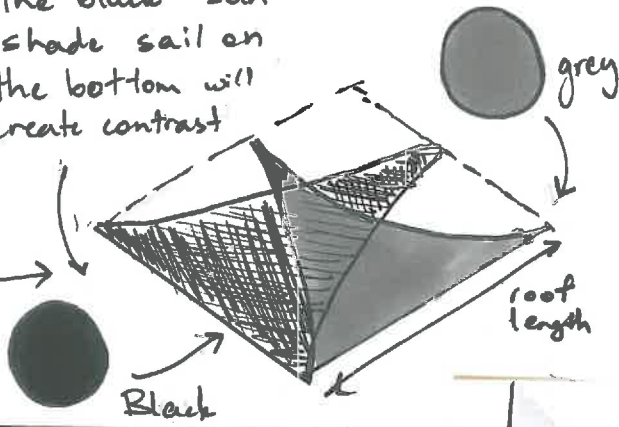
* Easier foot traffic with free flowing areas film screening room



The black sun shade sail on the bottom will create contrast



An interesting shape

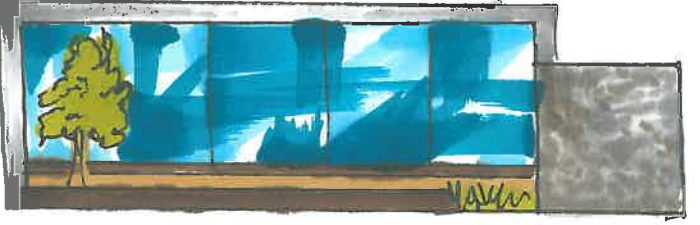


To maintain the minimalist look, it would be better not to add the shade cover as it would clutter the design

I've decided not to opt with the sunshade sail covers because I feel the design would suit a 'cleaner' look

Allows viewers to easily move from one area to the other

FRONT VIEW



The main art exhibitional space in my pavilion will be completely open in the entry as I want a flowing indoor / outdoor feel, and the open door and open plan will provide that effect

- However, I'll still need an actual door as there's valuable art that'll be stored in the pavilion

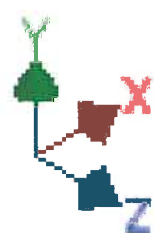
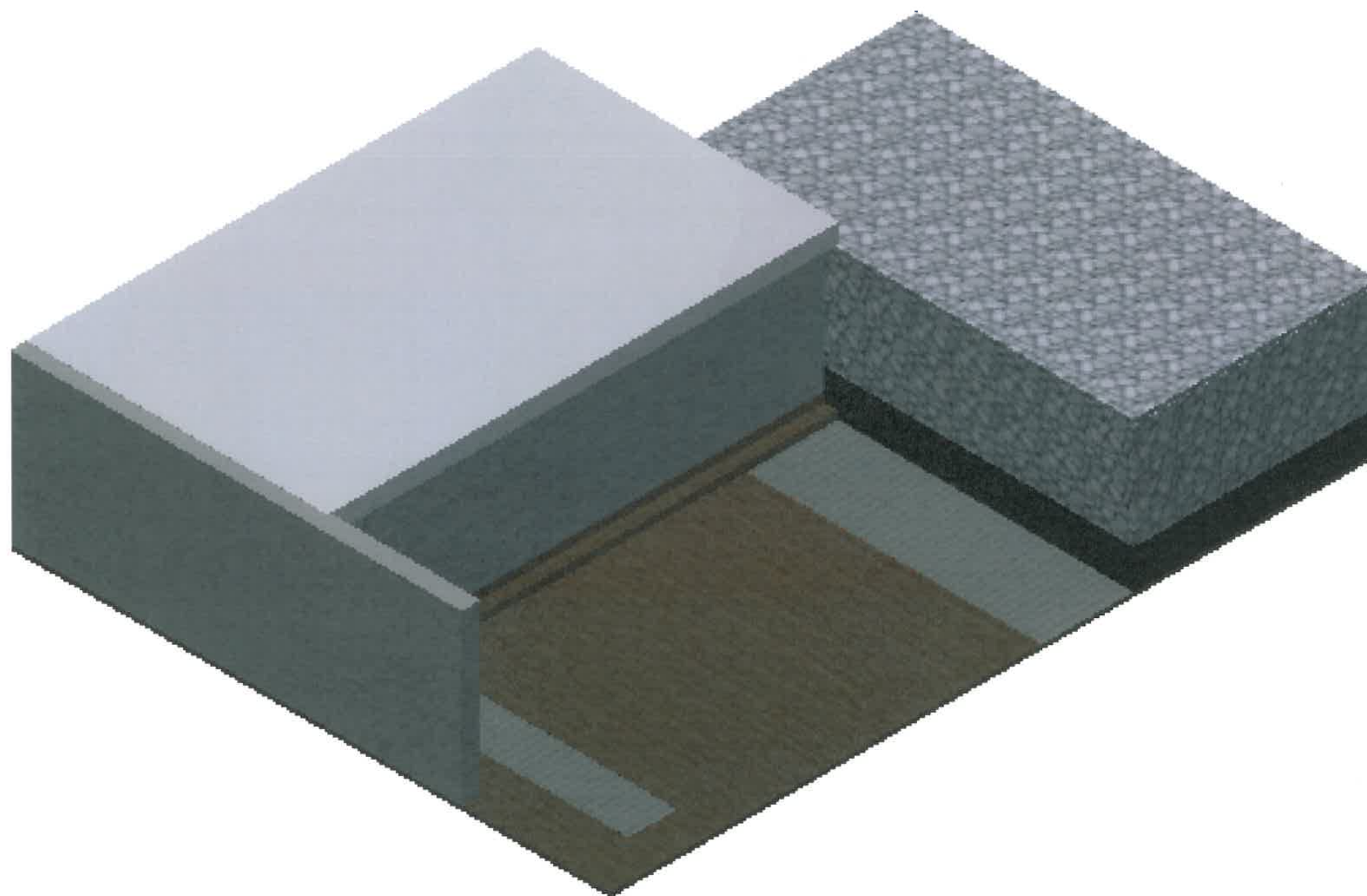


I've chosen to use glass folding doors as they're simple, sleek and clean look fits perfectly with my design

Glass with flexible joints will create the door (sliding)



The glass folding doors will be pushed to the side and remain in this position throughout the whole day or whenever the pavilion is open for viewing or in use.



Pavilion

AS 91337 (2.30): Use visual communication techniques to generate design ideas (3 credits).

Achievement	Achievement with Merit	Achievement with Excellence	Overall level of attainment for 91337
Use visual communication techniques to generate design ideas.	Use visual communication techniques skilfully to generate design ideas.	Use visual communication techniques effectively to generate design ideas.	
<ul style="list-style-type: none"> Visual communication techniques are used to generate ideas to show design qualities. Design ideas are produced that explore simple alternatives. 	<ul style="list-style-type: none"> Visual communication techniques are used skilfully to generate ideas to show design qualities with clarity through well-articulated visual means. Divergent design ideas are produced that explore challenging, creative or unusual alternatives. 	<ul style="list-style-type: none"> Visual communication techniques are used effectively to generate ideas to show design qualities with clarity and refined detailing. Divergent design ideas are produced that are explored and extended. 	M

Commentary:

Vis Com – M
Des Ideas – M

Divergent ideas are produced, that explore unusual forms in an architectural context.

Visual communication is skilful and clearly shows the aesthetics of the design idea and functional thinking through the diagrammatic use of details. For the visual communication to move into Excellence the work would need to communicate more detail about the arrangement and use of the space.