

Design and Visual Communication

AS 91338

Exemplar B - Excellence

AS91338: Produce working drawings to communicate technical details of a design (4 credits) 2016

Achievement	Achievement with Merit	Achievement with Excellence
<ul style="list-style-type: none">Produce working drawings to communicate technical details of a design.	<ul style="list-style-type: none">Produce working drawings to clearly communicate technical details of a design.	<ul style="list-style-type: none">Produce working drawings to effectively communicate technical details of a design.
Produce a set of related 2D instrumental working drawings that communicate technical details showing complex visual information .	Produce a set of working drawings that clearly communicate technical details showing complex visual information.	Produce a coherent set of working drawings that effectively communicate technical details showing complex visual information.
Demonstrate an ability to use drawing conventions in a working drawing.	Demonstrate an ability to apply drawing conventions appropriately to working drawings.	Demonstrate an ability to apply drawing conventions appropriately to the type of working drawing.

E

Comments:

This is an example of a coherent set of 2-D working drawings produced using manual drawing techniques. The drawings effectively communicate complex visual information. The drawings include site plan, plan views, elevations, cross section, and enlarged construction details at 1:10

The plan view communicates technical details in the form of room fittings, door swings and windows. The elevations indicate the exterior materials used, windows and doors. The cross section, drawn at 1:100 conveys information related to the construction of the building and is supported by four enlarged details drawn at 1:10 to help clarify more of the technical information on the cross section.

All the drawings are referenced and linked to one another to enable the drawings to be read as a coherent set of working drawings.

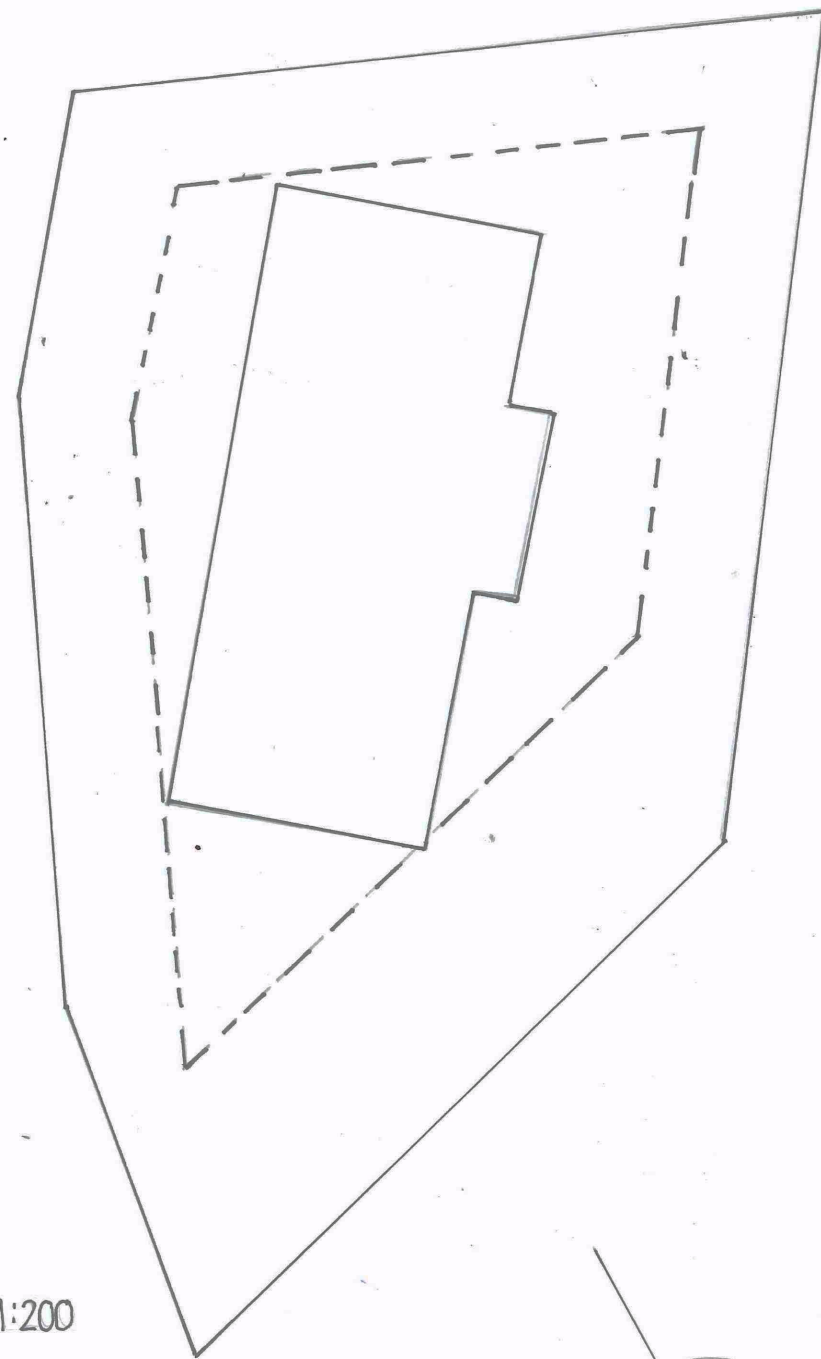
Conventions are shown correctly and enough are applied appropriately for this type of drawing.

The drawings have been drawn using standard scales: 1:200, 1:100 and 1:10.

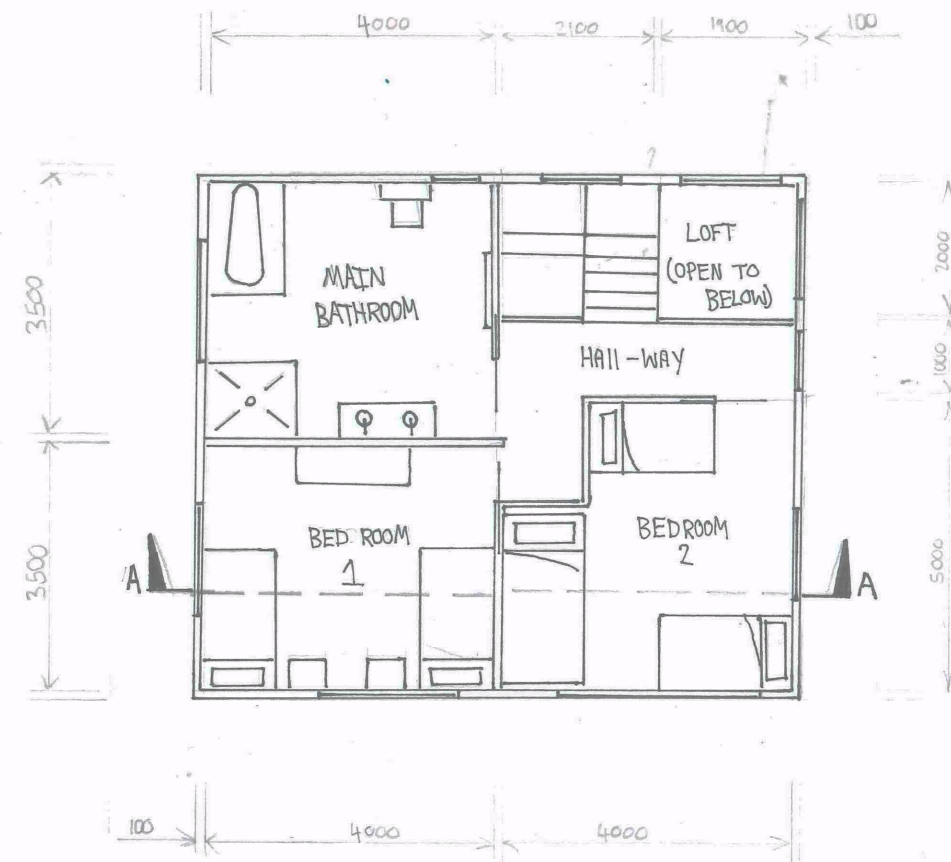
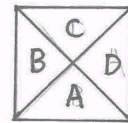
SKI CHALET

SITE PLAN & FLOOR PLANS

SHEET 1 OF 4



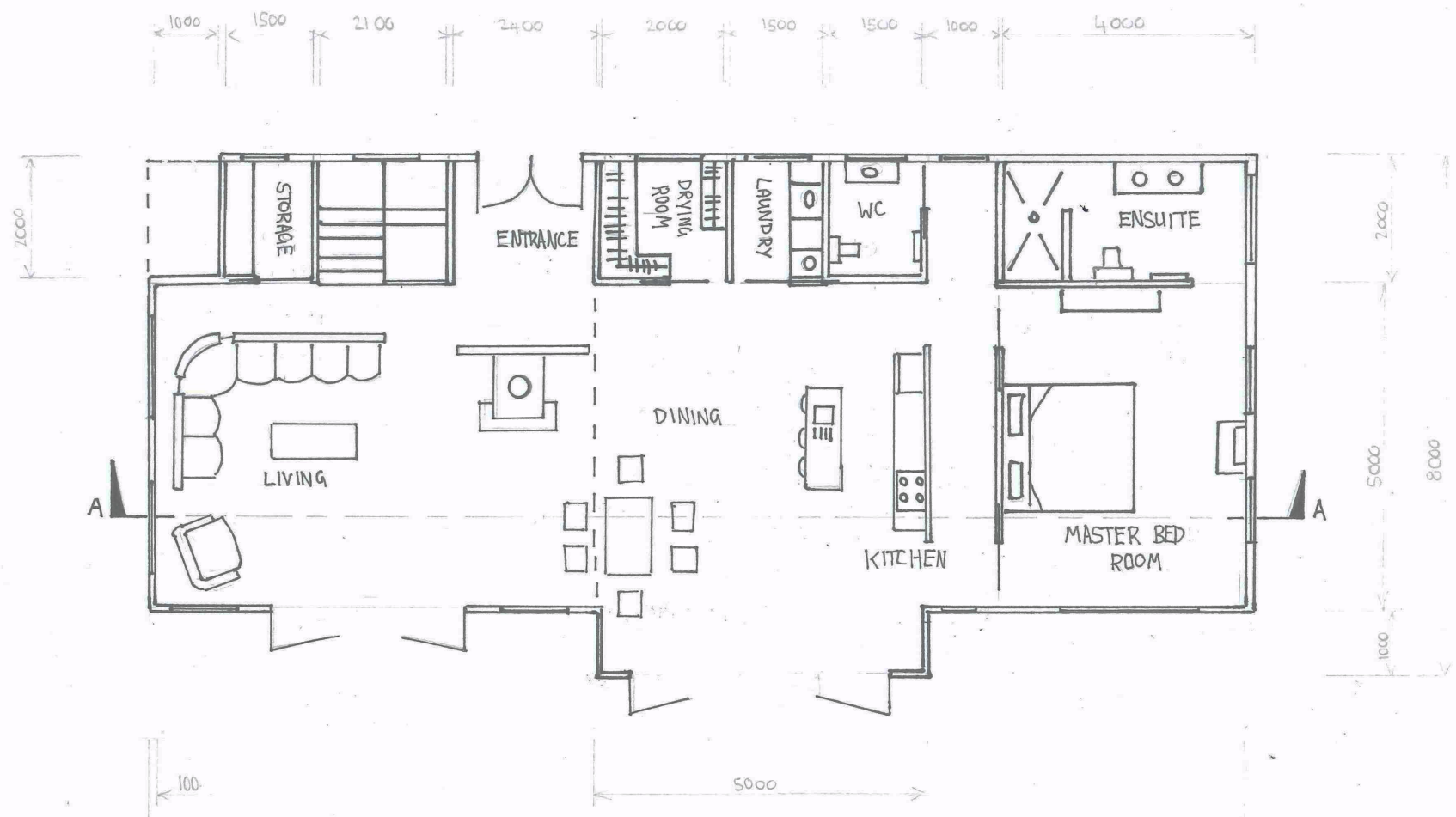
SCALE 1:200



FIRST FLOOR

ALL DIMENSIONS IN
mm

SCALE 1:100

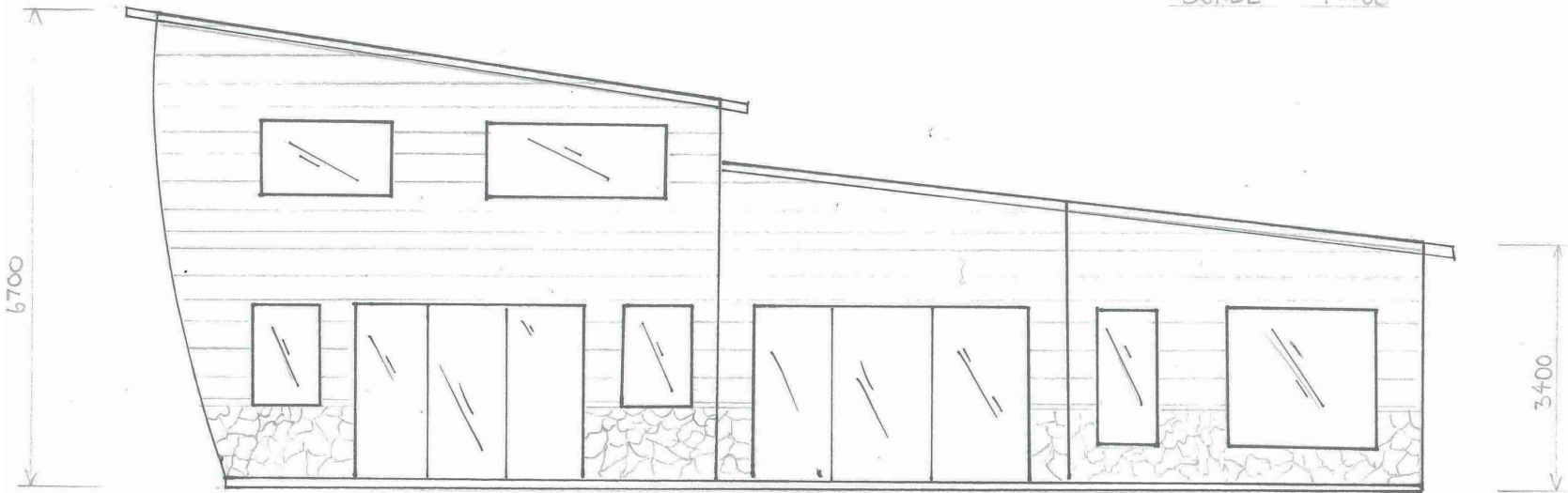


SKI CHALET

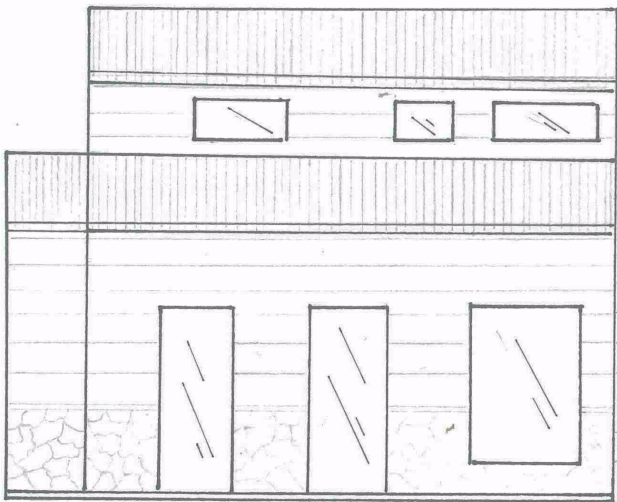
ELEVATIONS

SHEET 2 OF 4

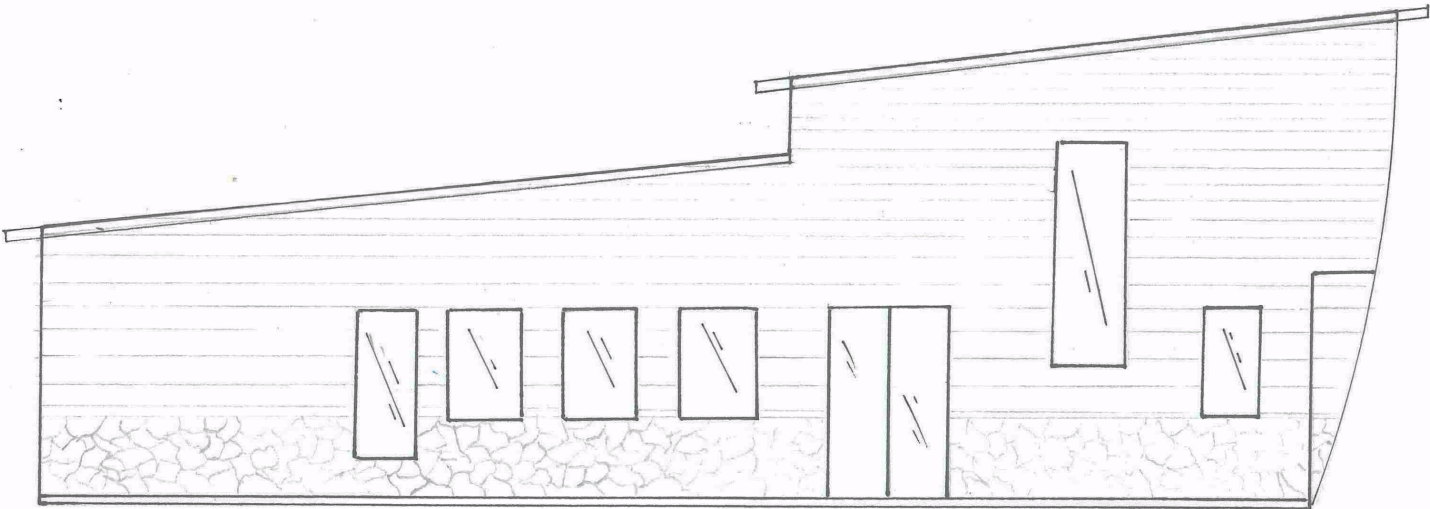
SCALE 1:100



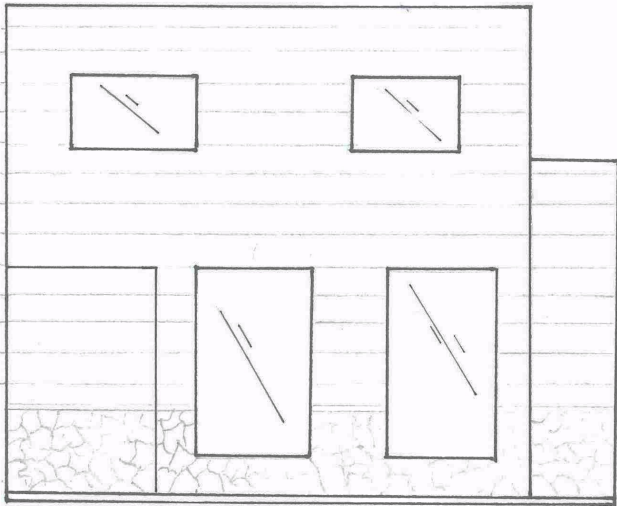
ELEVATION A



ELEVATION D



ELEVATION C



ELEVATION B

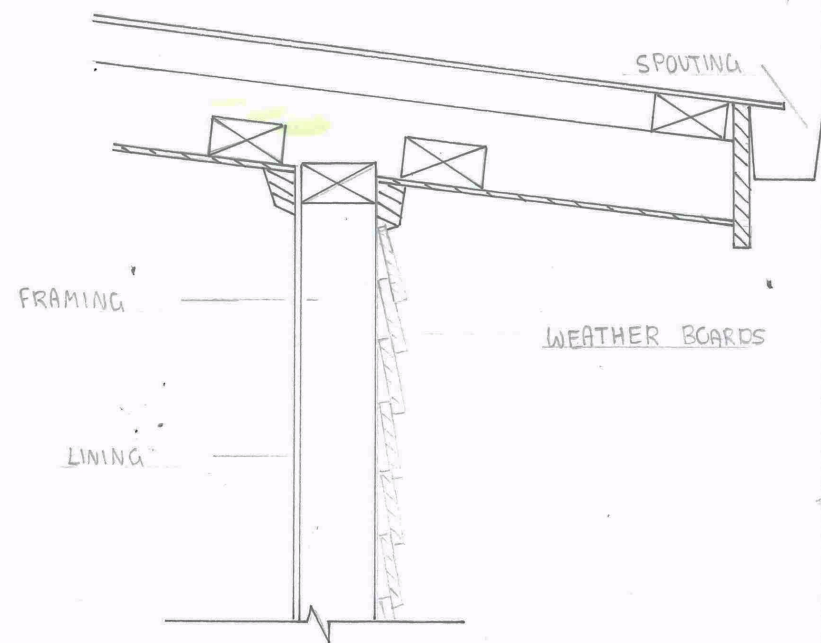
SKI CHALET

CROSS-SECTION & DETAILS

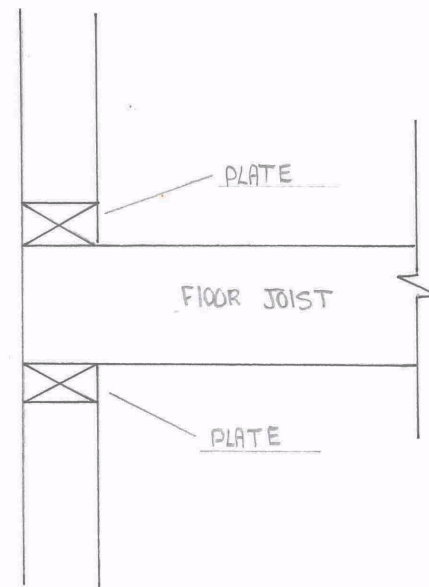
SHEET 3 OF 4

SCALE AS SHOWN
ALL IN DIMENSIONS
IN MM

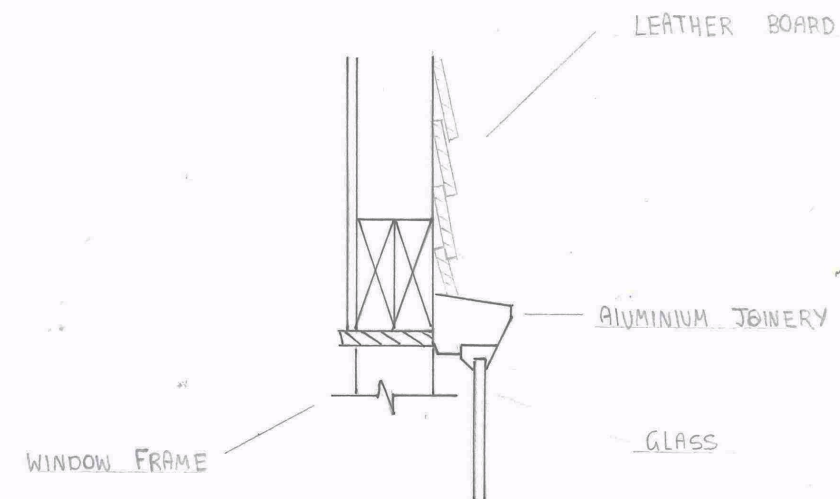
DETAIL 2 SCALE 1:10



DETAIL 1 SCALE 1:10



DETAIL 3 SCALE 1:10



DETAIL 4 SCALE 1:10

