

## Design and Visual Communication

AS 91339

### Exemplar C – Excellence

**AS91339: Produce instrumental perspective projection drawings to communicate design ideas (3 credits) 2016**

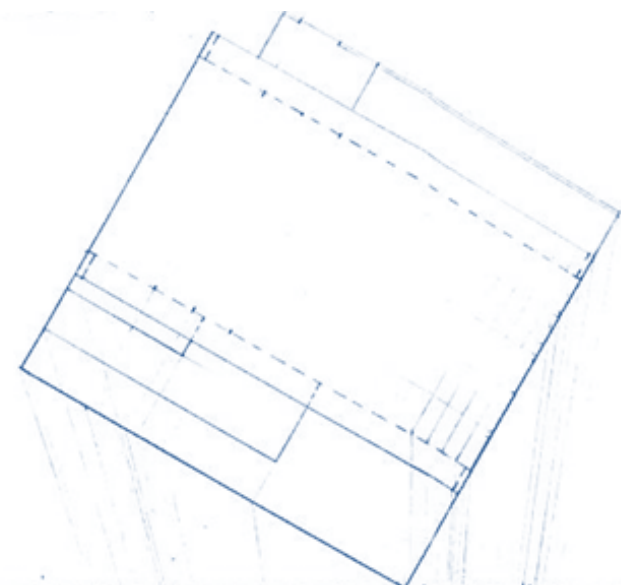
Achievement	Achievement with Merit	Achievement with Excellence
<ul style="list-style-type: none"> <li>Produce instrumental perspective projection drawings to communicate design ideas.</li> </ul>	<ul style="list-style-type: none"> <li>Produce instrumental perspective projection drawings to clearly communicate design ideas</li> </ul>	<ul style="list-style-type: none"> <li>Produce instrumental perspective projection drawings to effectively communicate design ideas.</li> </ul>
<p>Uses perspective projection drawing <b>techniques</b> to communicate complex visual information.</p>	<p>Uses perspective projection drawing techniques to <b>skilfully</b> communicate complex visual information.</p>	<p>Demonstrate an ability to <b>select a viewpoint</b> that enables complex visual information of the design to be <b>effectively</b> communicated.</p>
<p>The instrumental perspective drawing shows <b>design features</b>.</p>	<p>The instrumental perspective drawing <b>clearly</b> shows <b>detail</b> of the design features</p>	<p>The instrumental perspective drawing <b>accurately</b> shows <b>detail</b> of the design features that enhance the view.</p>

E

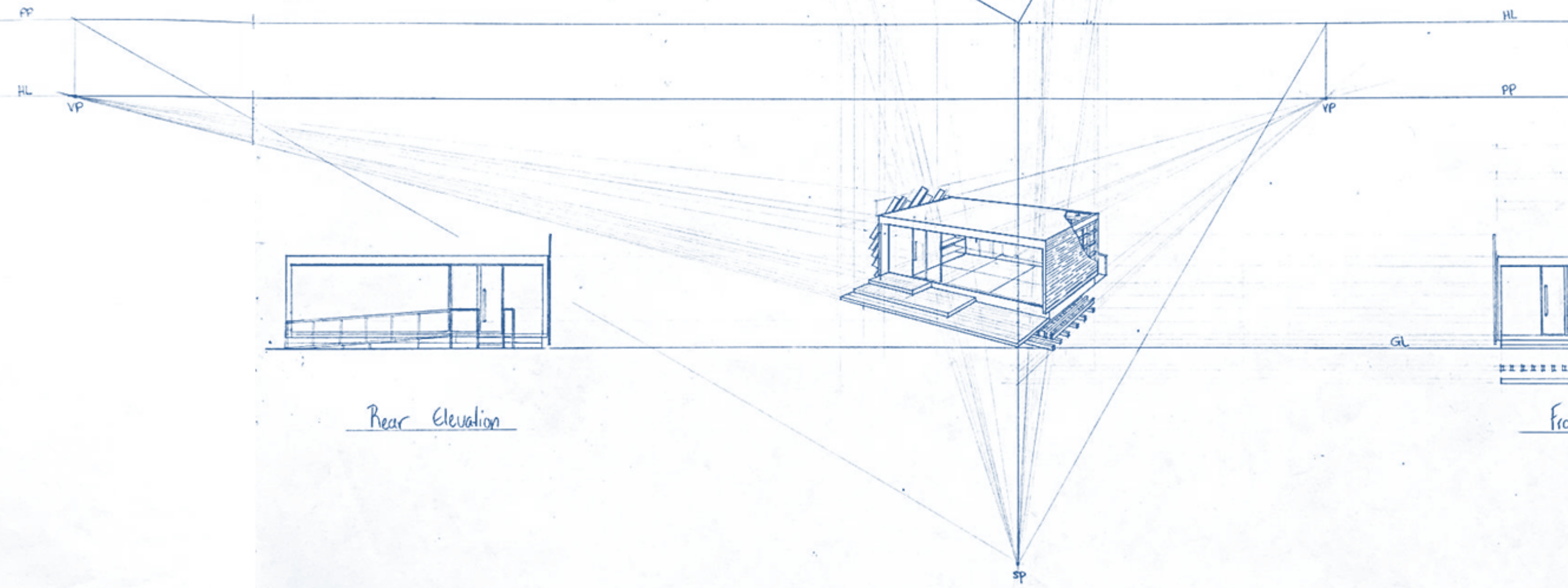
**COMMENTS:**

The perspective principles have been applied correctly and the view point has been chosen to allow complex visual information to be communicated effectively. All interior lines and curves have been plotted accurately.

Detail of the features, both internally and structurally, has been shown clearly, accurately and effectively.



Plan



Rear Elevation

Front Elevation

2 point perspective

Scale : 1 : 100



