

Design and Visual Communication

AS 91339

Exemplar B – Merit

AS91339: Produce instrumental perspective projection drawings to communicate design ideas (3 credits) 2016

Achievement	Achievement with Merit	Achievement with Excellence
<ul style="list-style-type: none"> Produce instrumental perspective projection drawings to communicate design ideas. 	<ul style="list-style-type: none"> Produce instrumental perspective projection drawings to clearly communicate design ideas 	<ul style="list-style-type: none"> Produce instrumental perspective projection drawings to effectively communicate design ideas.
Uses perspective projection drawing techniques to communicate complex visual information. <hr style="width: 20%; margin-left: 10%;"/>	Uses perspective projection drawing techniques to skilfully communicate complex visual information. <hr style="width: 20%; margin-left: 10%;"/>	Demonstrate an ability to select a viewpoint that enables complex visual information of the design to be effectively communicated. <hr style="width: 20%; margin-left: 10%;"/>
The instrumental perspective drawing shows design features . <hr style="width: 20%; margin-left: 10%;"/>	The instrumental perspective drawing clearly shows detail of the design features <hr style="width: 20%; margin-left: 10%;"/>	The instrumental perspective drawing accurately shows detail of the design features that enhance the view.

M

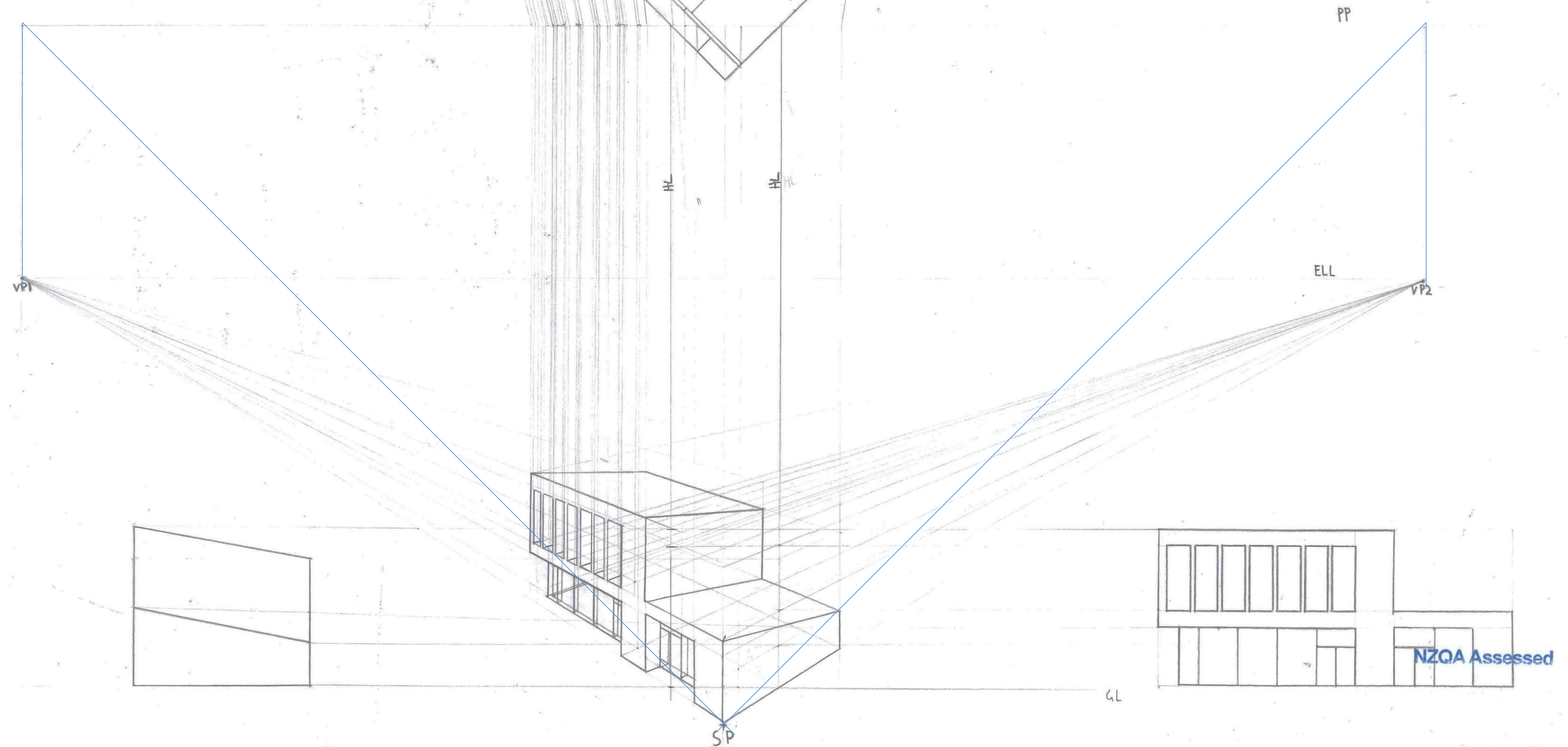
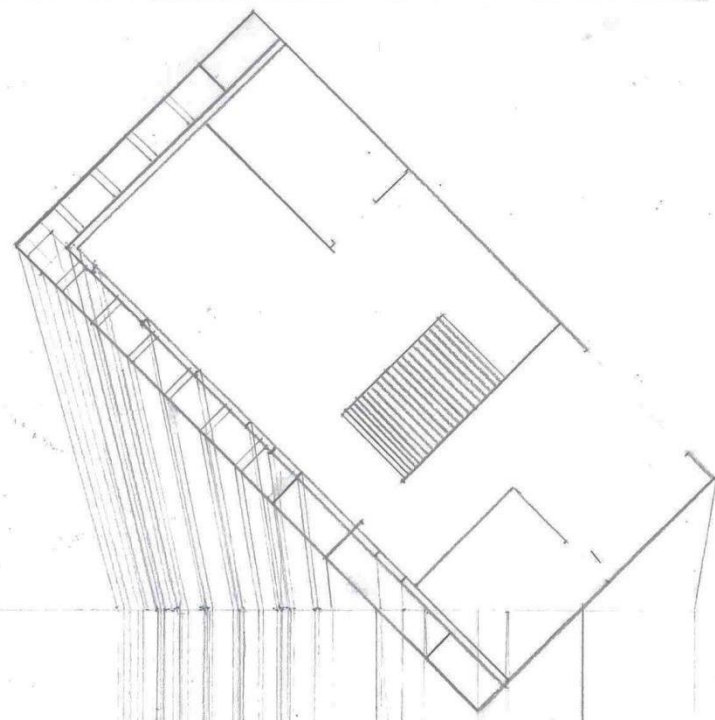
COMMENTS:

The perspective principles have been applied and the drawing shows complex visual information.

Complex visual information is shown within the shape and form of the spatial design.

Detail of the features is shown but lacks accuracy to enhance the view.

The design features show depth and detail enough for merit.



SKI CAFE PERSPECTIVE DRAWING

SCALE: 1:200

DATE: 27/10/16

NZQA Assessed