

TE PAPA MUSEUM



EMBRACING SPACE

NOW colour

INSPIRATION

NATURE BEHIND GLASS



WORLD OF WEARABLE ARTS

DISPLAY



MINIATURE 13 PRESERVATION



AUDIENCE SHELLS DURABILITY COLLECTIONS



TEXTURE

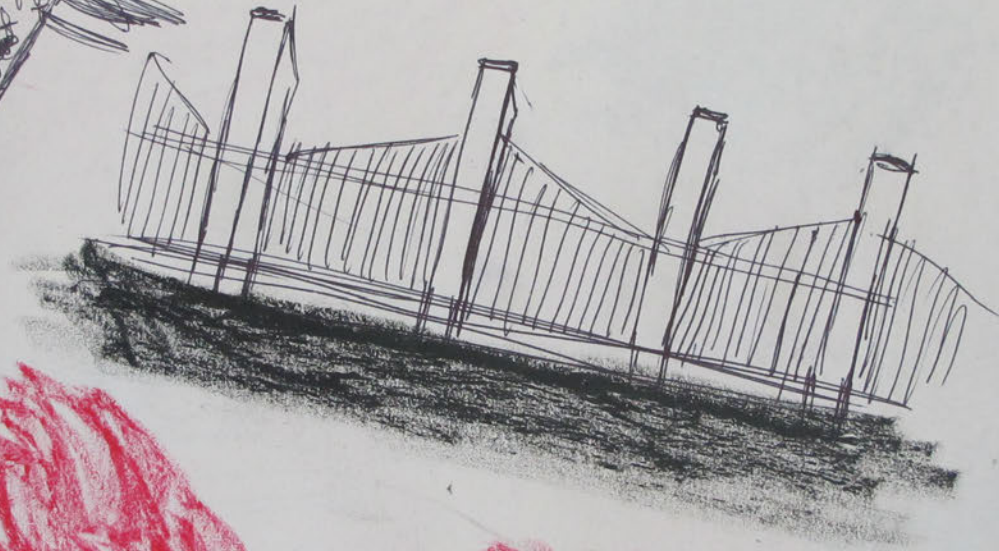
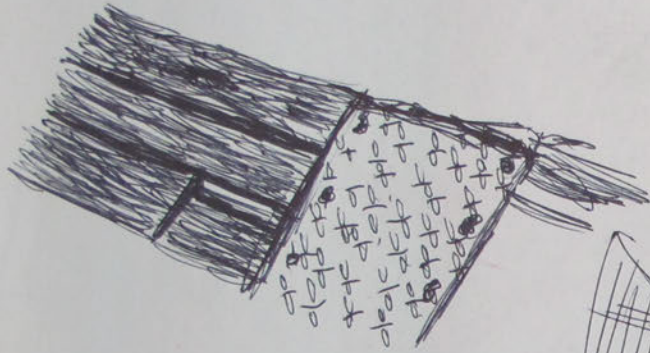
EXAMINATION MICROSCOPIC CLOSE UP



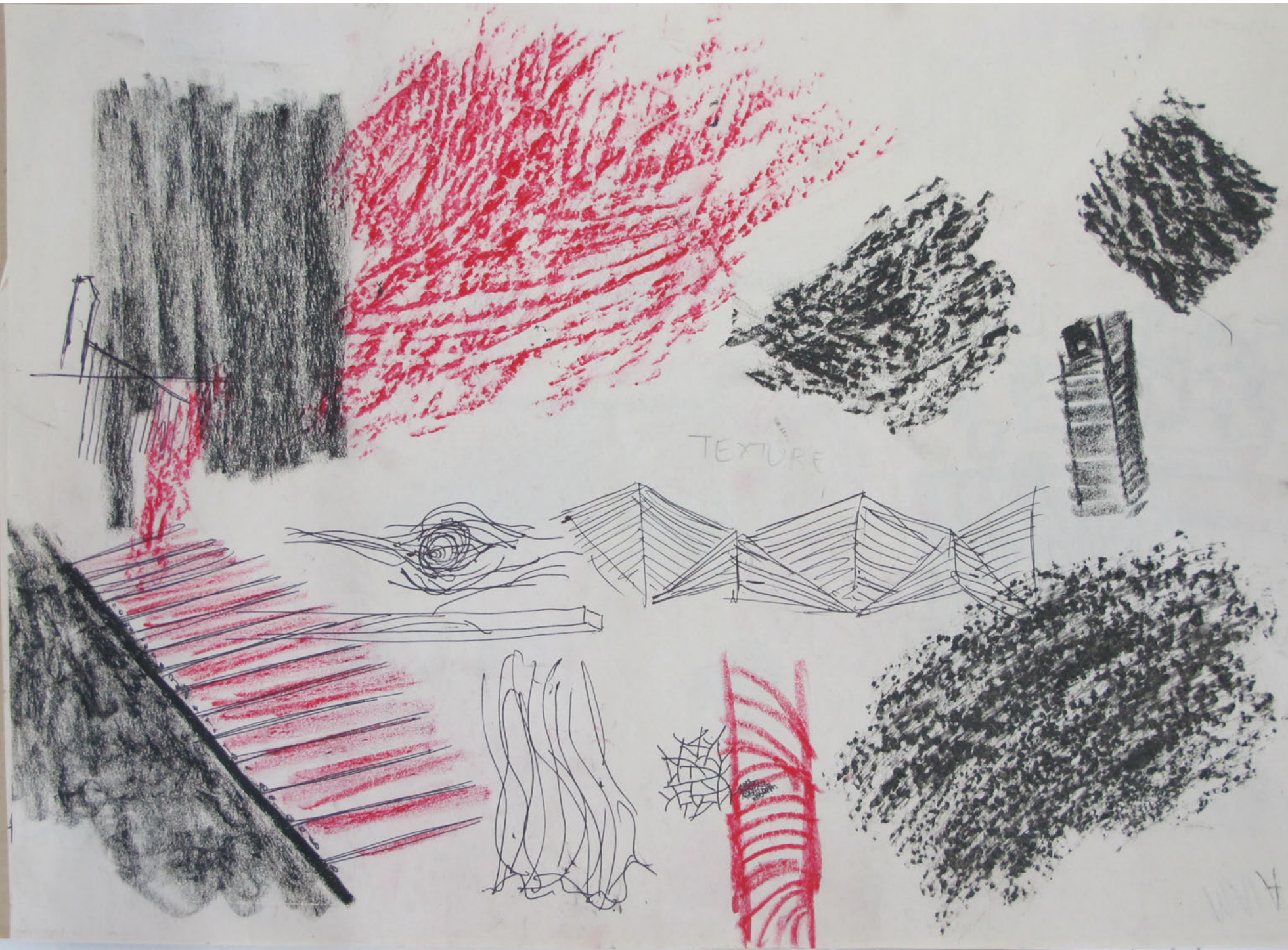
INSECTS



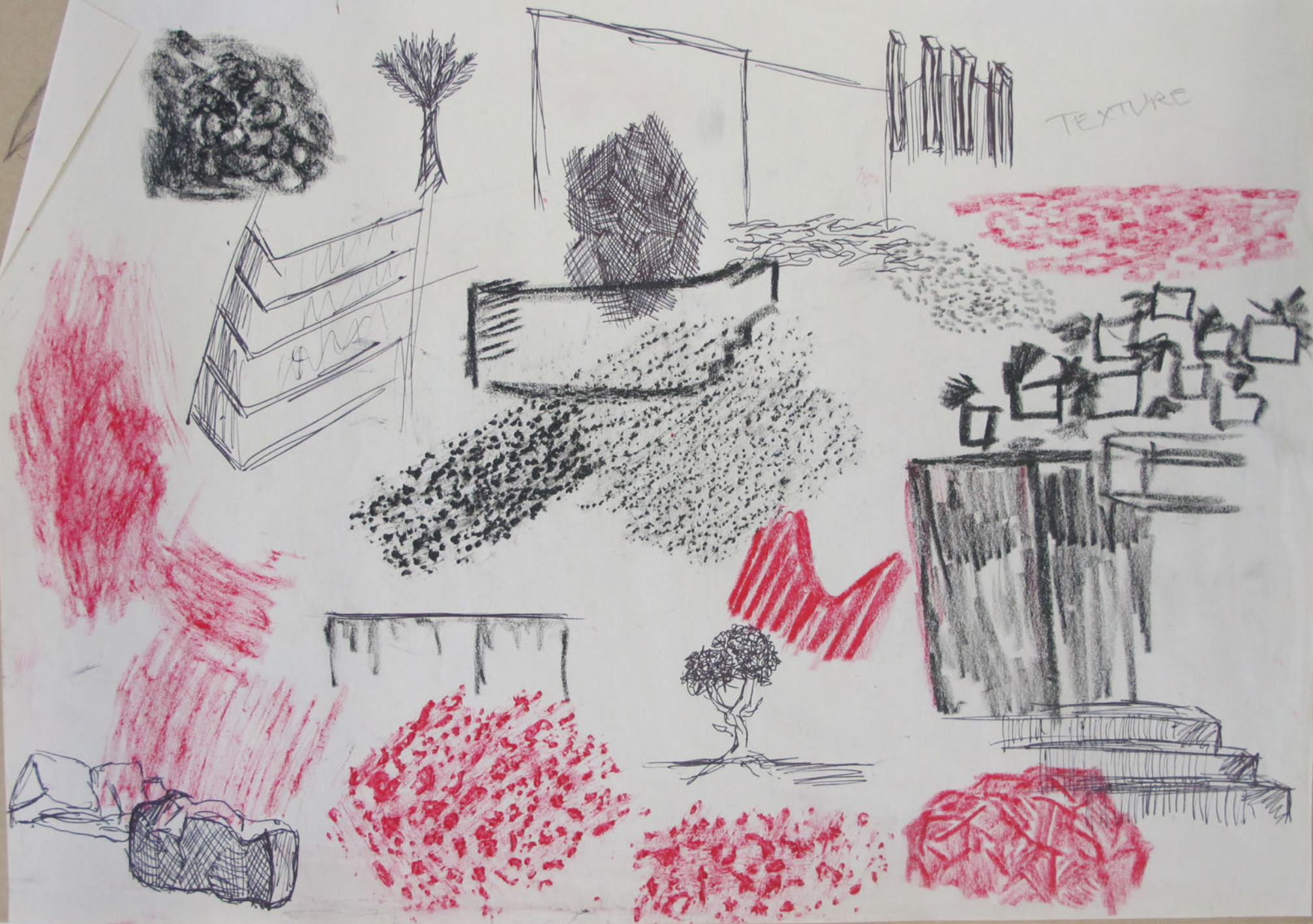
TEXTURE





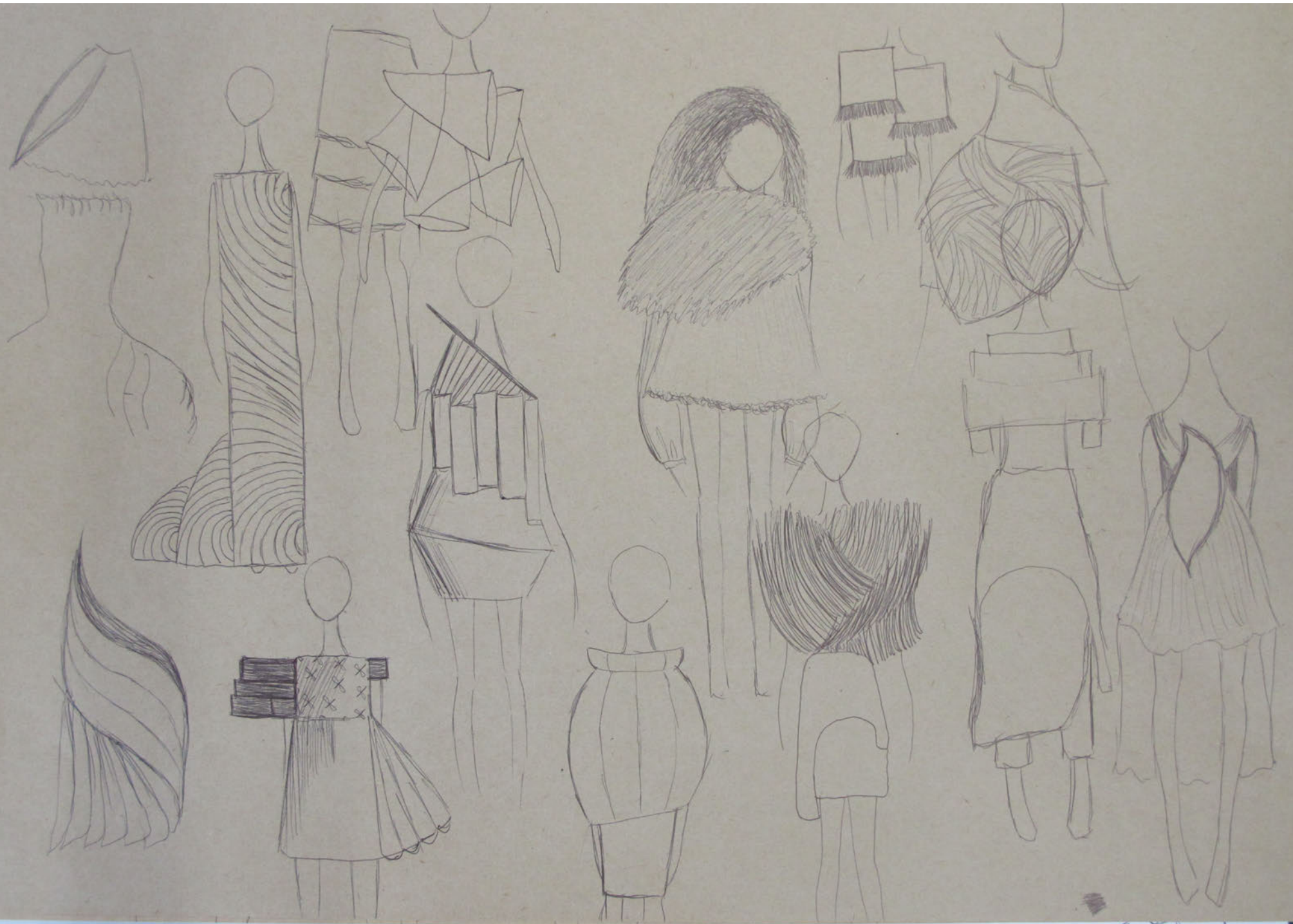




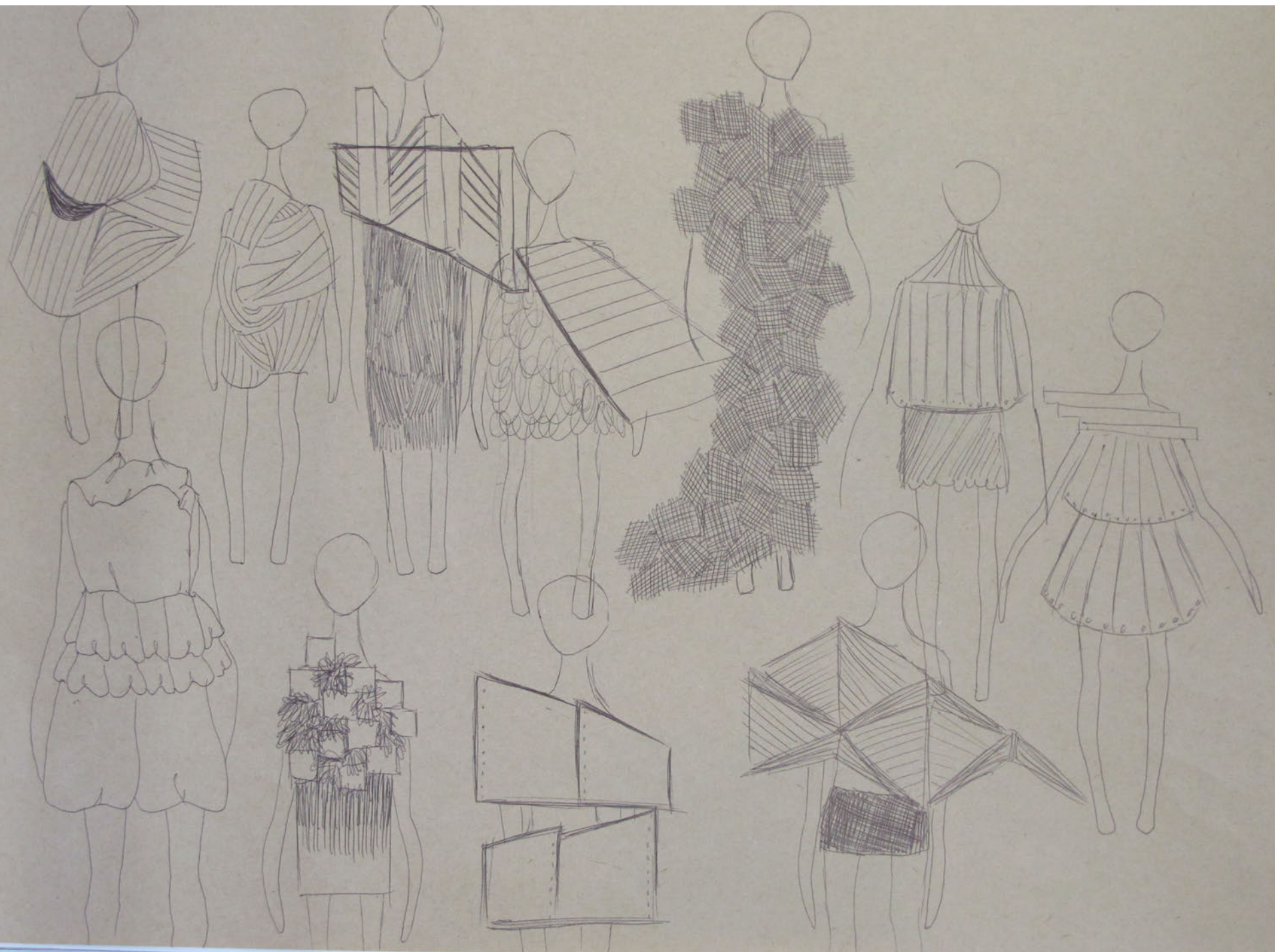


TEXTURE



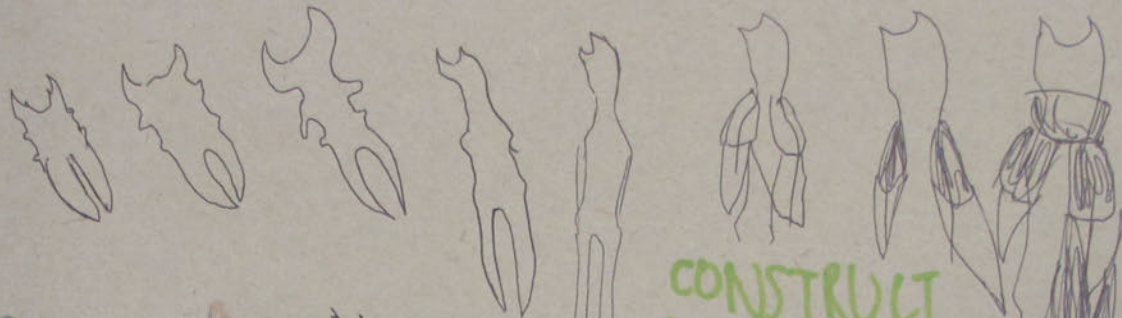












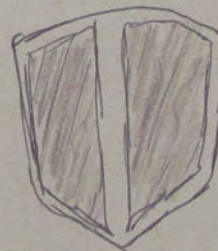
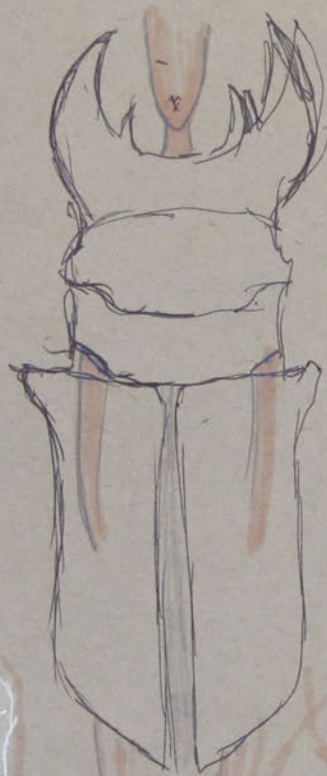
TOUGH

CONSTRUCT  
DEVELOP  
EVOLVE  
ADAPT

MORPH  
TRANSFORM

SHELL  
SKIN

EXOSKELETON  
BODY



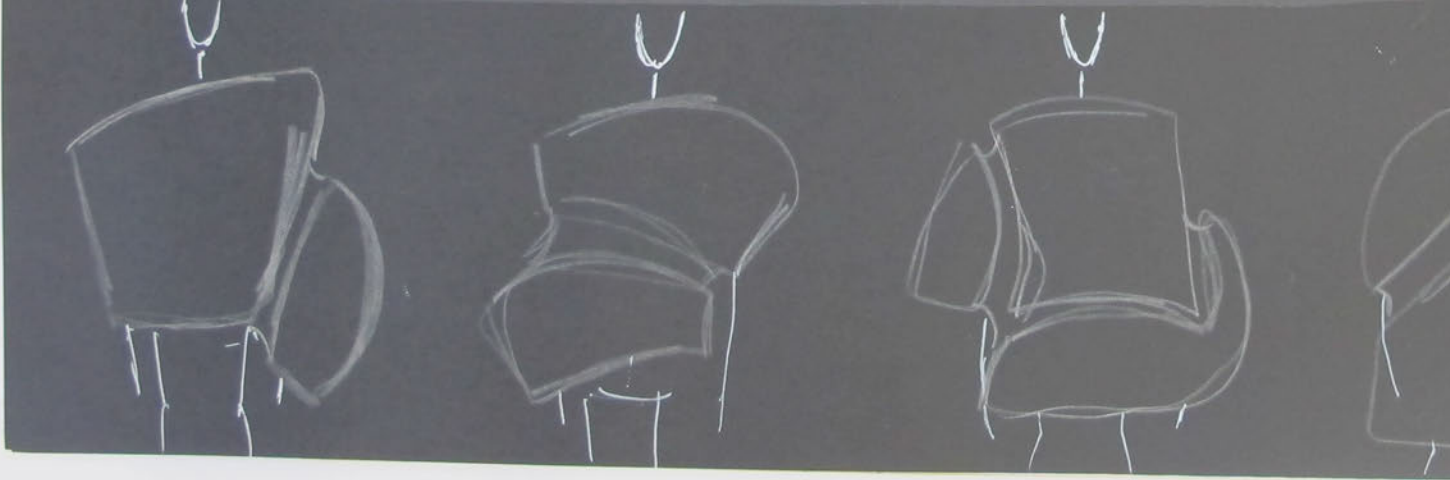
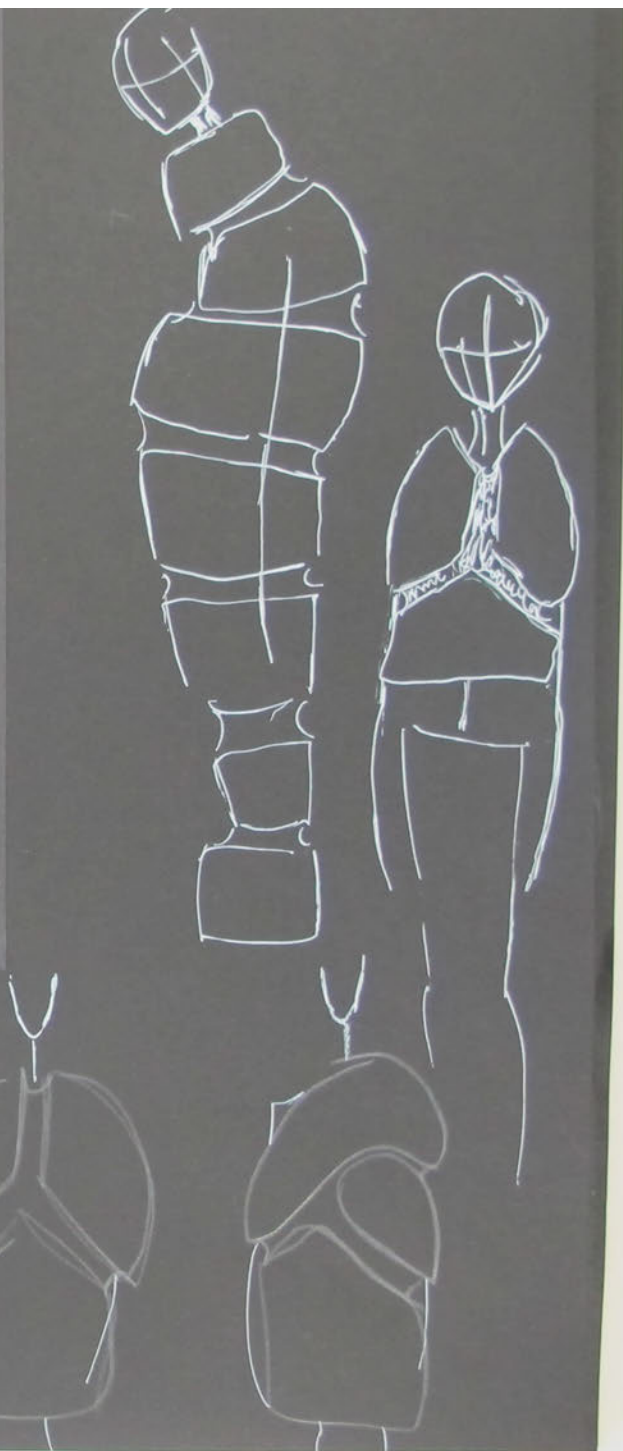
DEFENSE  
ARMOUR



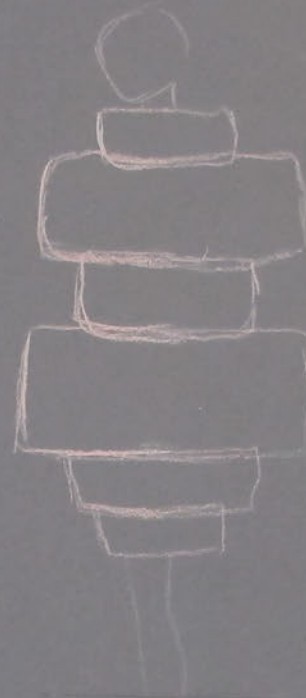
SHIELD



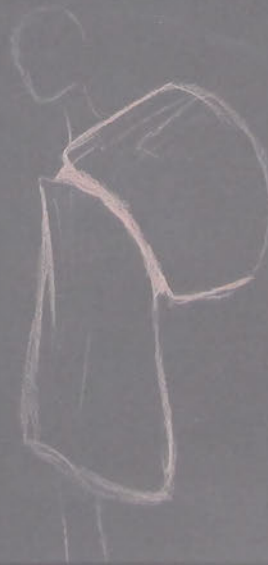
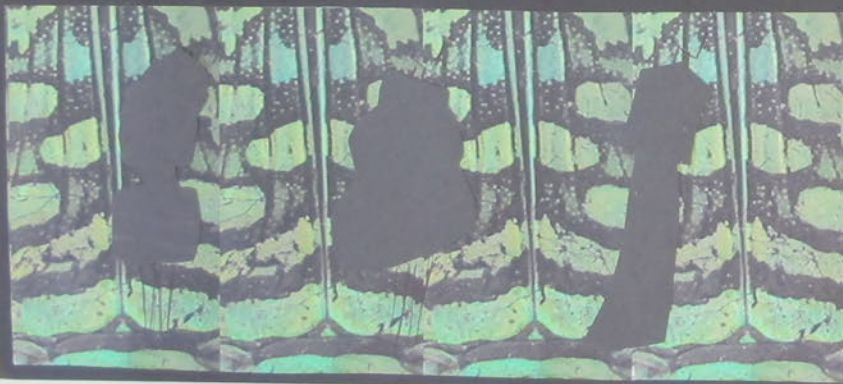








SILHOUETTE  
SHAPE



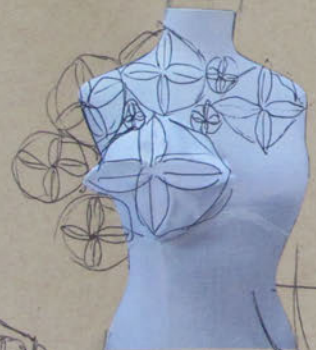
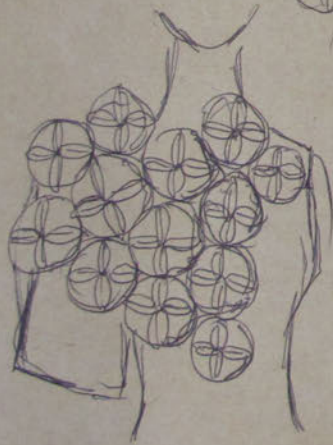














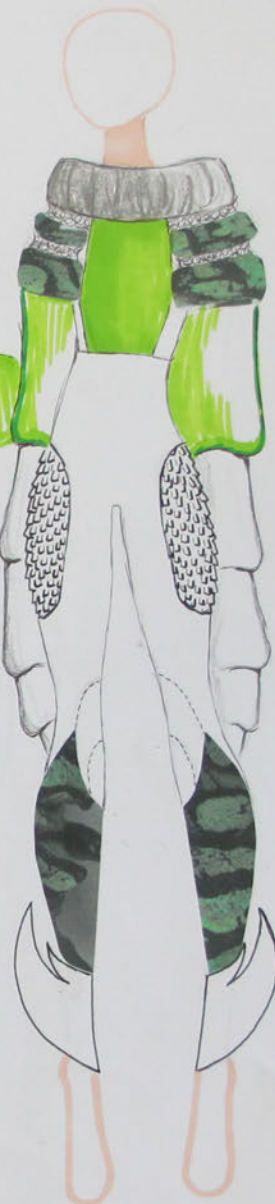
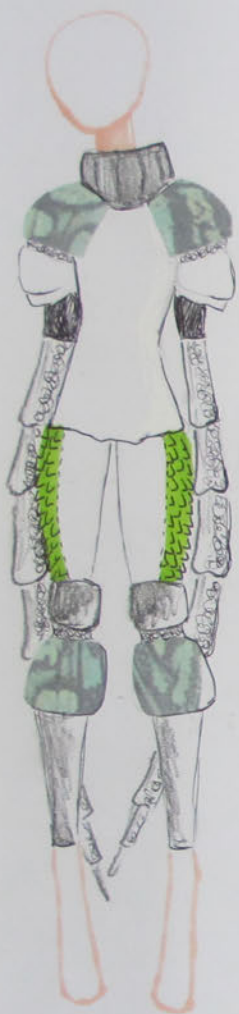






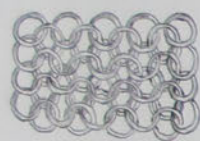


#50494528





To form the structure of the armour pieces, the under layer will be a fine metal netting. I will mold this to the desired shape then adhere the quilted makeup re-movers onto it, as seen on the right.



classic Tenzai - chainmaille made of small metal/plastic rings for the flexible parts of the 'limbs'.



Chainmaille joins on to the mesh frames of the shoulder and neck piece with small strong rings attaching to the tightly rolled edge of the netting.

Scales are sewn onto fabric, which are made of small ziplock bags with something like scrunched up newspaper inside, sewn in long rows, reflects roman armour of leather scales. The transparent plastic will also catch the light.



The garment will be put together in three parts, for ease of fitting, and also to the reflect the aesthetic and thematic idea of strapping on pieces of armour. The first piece will be the fitted jumpsuit, then the sleeve attachment, shown left, which is like a strap on set of sleeves. Then the last piece is the shoulder and chest piece, which slips straight over the head and into the other shoulders (shown right).



chainmaille is flexible & strong, providing easy movement.

topstitching or possibly cording

Simple and refined use of the printed vinyl emphasizes the already beautiful pattern and contrasts the small details with a large print.

zip to allow accurate fit of jumpsuit

jumpsuit fabric should be a flexible but shape holding material.

Strap on knee pads to break up the tight silhouette, and again following the theme of creating your own shell.

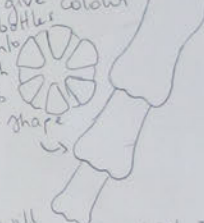
don't need to give simple forms to hips

The scaled hip pieces will be slightly 3D to give a feeling of dominance and structure



I was very inspired by the joints and finish of the longhorn beetle's shell. It felt connected to armour and the layering up of a shell of protection.

The exaggerated antennae inspired sleeves will be made of soda bottles, receding in size. Using paper mache on some sort of plaster to give colour and texture the bottles will be attached into each other through the bottom (right) to form the desired shape.



For the chest piece I will be using makeup remover pads, which I will be drying, and then quilting together as shown below. A wide & tight zigzag stitch will be used.

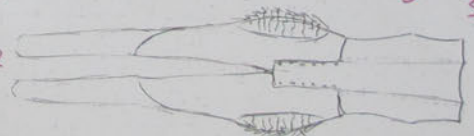


Some sort of footwear or cover for the mannequin's feet would be an improvement.









extend panel  
down from  
top



FINAL CHOICE

[illegible]



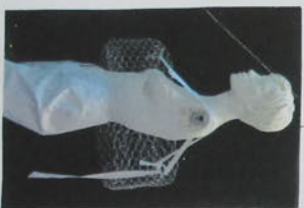




# BUILDING BASE



exploring

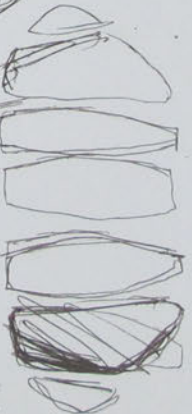


I then covered in the long strips and to prevent the cut edges catching, and to create the rounded natural

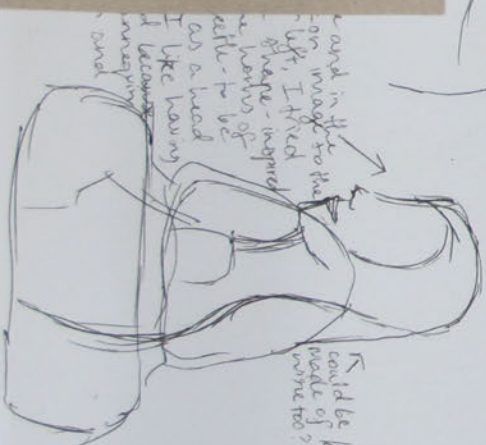


position of my design

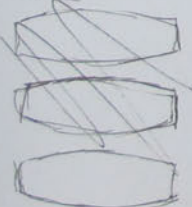
For the shoulder an organic piece of cardboard with curves in it to achieve a quite hand the second shoulder identical and possible shapes of the view the 2 parts, I know 2 independent



Some 2D ideas on how to cut and some fabric to fit to the 3D shape of the shoulder shape. Working off a circular pattern I think I would alter the curves



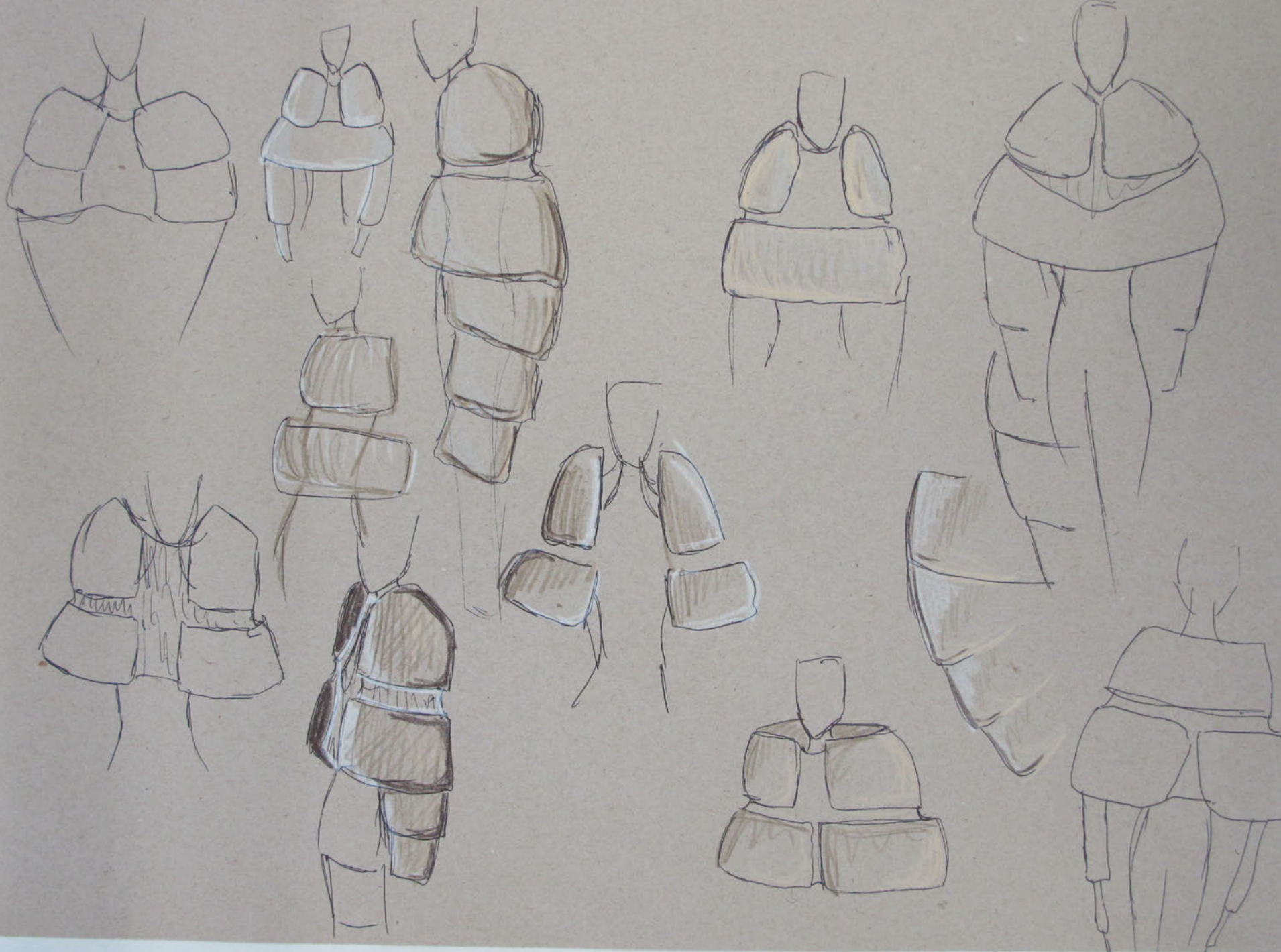
could be made of wire too?













## Excellence

### PRODUCT : Fashion

23 pages in total

AS 91627 (3.30): Initiate design ideas through exploration (4 credits)

Achievement	Achievement with Merit	Achievement with Excellence	Overall level of attainment for 91627
Initiate design ideas through exploration.	Initiate design ideas through insightful exploration.	Initiate design ideas through extensive exploration.	
<ul style="list-style-type: none"> <li>Use starting experiences and visual communication strategies to <u>explore alternatives and variations</u> to <u>expand design thinking</u>.</li> <li>Ideas are <u>re-generated</u> from alternatives and variations which <u>lead towards</u> design ideas.</li> </ul>	<ul style="list-style-type: none"> <li>Use visual communication strategies to show <u>considered</u> alternatives and variations for the purpose of <u>analysing and re-interpreting</u> ideas.</li> <li>Ideas identify an <u>emerging train of thought</u> that <u>informs</u> design ideas.</li> </ul>	<ul style="list-style-type: none"> <li>Use visual communication strategies to show <u>divergent and perceptive</u> alternatives and variations.</li> <li>Train of thought ideas <u>extend and transform</u> design ideas.</li> </ul>	E

Pages 1-10 demonstrate evidence of a starting experience of the interior and exterior of Te Papa Museum environment, architecture and collections. A range of frottage, photographs, describing words, and observational drawings are used as starting points to generate and explore textures and shapes. Exploration of abstract alternatives and variations to expand thinking with possible shapes and silhouettes on the body come from the beetle.

Pages 11-15 show regeneration of conception around the beetle elements and lead towards more focused design ideas and structural thinking. A train of thought is strongly emerging and showing informed design ideas forming. The analysis and considered alternative variations is forming by remixing elements around and introducing more defined ideas that are garments.

Pages 16-17 have evidence of re-interpreting and analysis on specific considered elements of the design. There is apparent knowledge of how it will come together with materials and construction so the design thinking shows clarity and insightful considered and purposeful exploration.

Pages 18-23 has evidence of divergent and perceptive ongoing awareness of thought. This is seen in the variations and extension of the ideas. Further focused transformations of the idea continue to evolve and shows unpredictable further development of individual elements.

Ideation has occurred before the establishment of a brief and specifically determined garment. This has allowed for creative and a non predictable outcome of design ideas that could be wearable art or avant garde.

Visual communication strategies of sparing use of design marker to indicate material sections, use of collage integrated into the freehand fashion illustration sketching techniques is effective. Technical thinking skills of possible construction are apparent and show consideration of pages 17, 19, and 21.