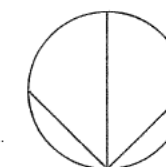
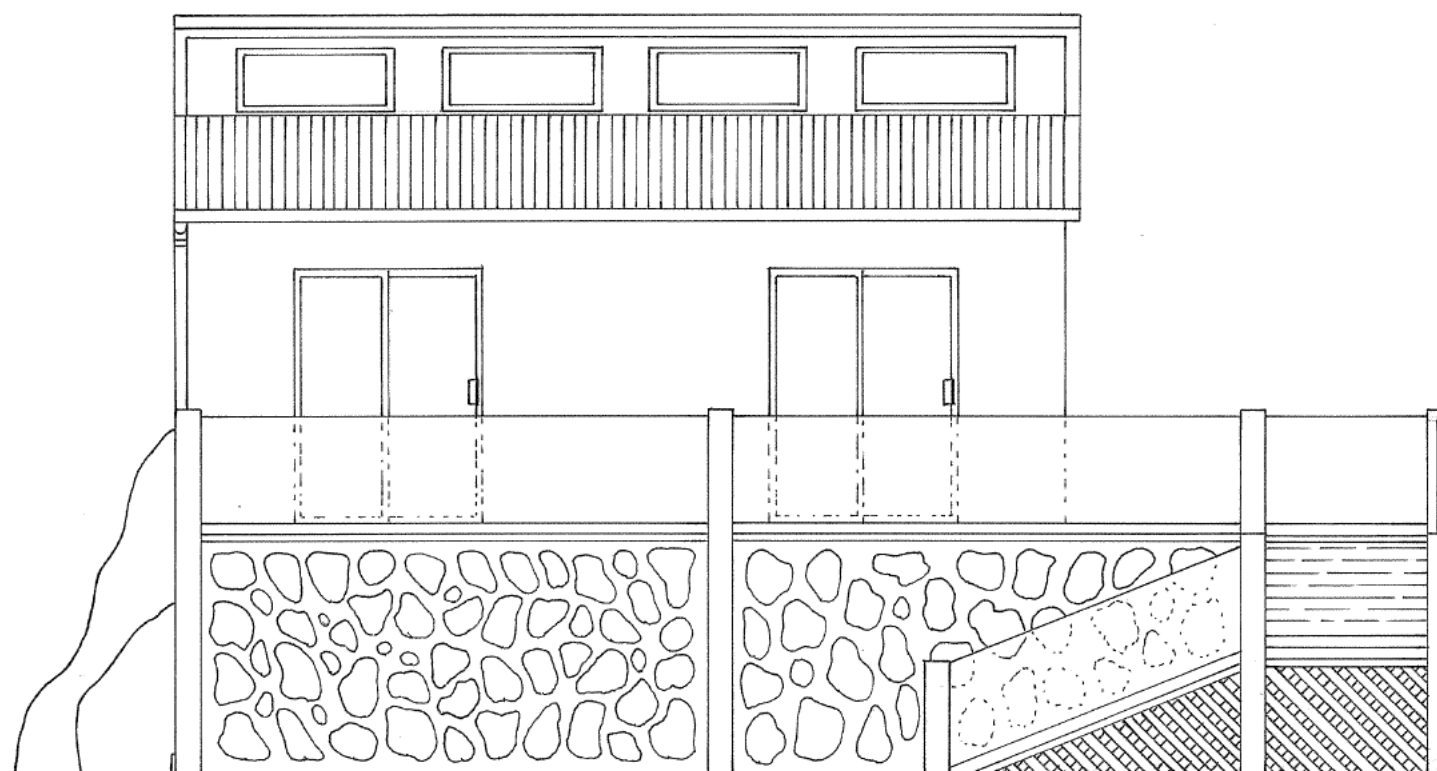


PLAN



MOUNT MAUNGANUI SURF CLUB

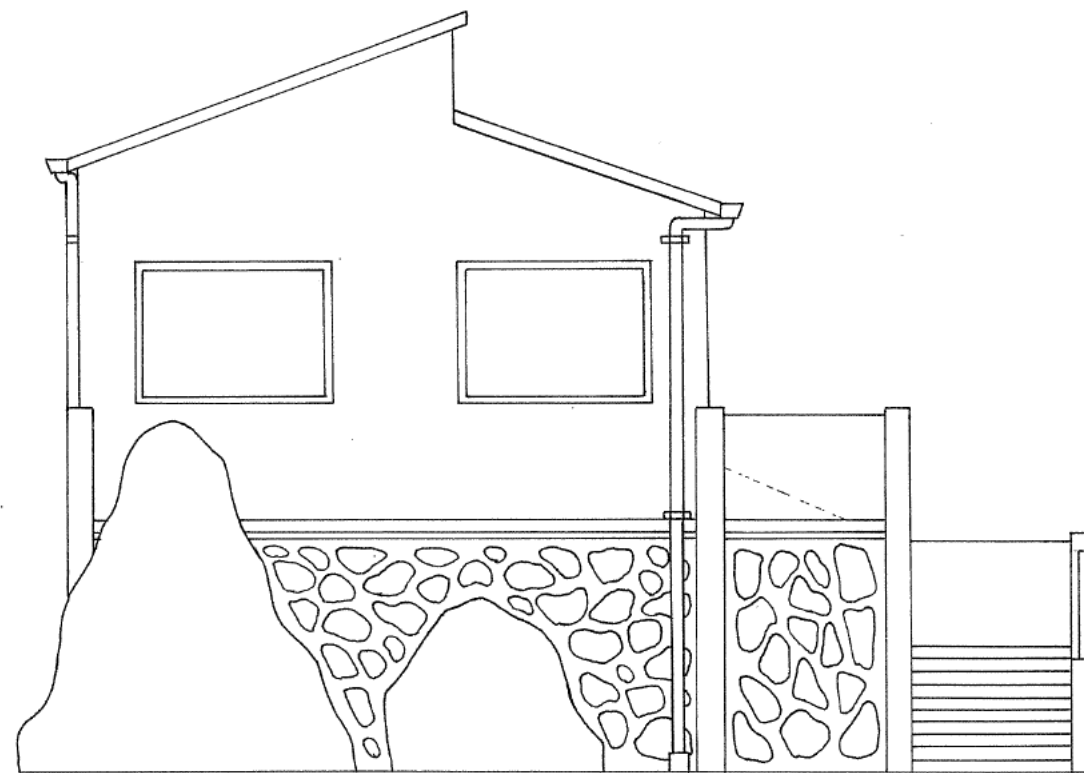
SCALE 1:50



NORTH ELEVATION

MOUNT MAUNGANUI SURF CLUB

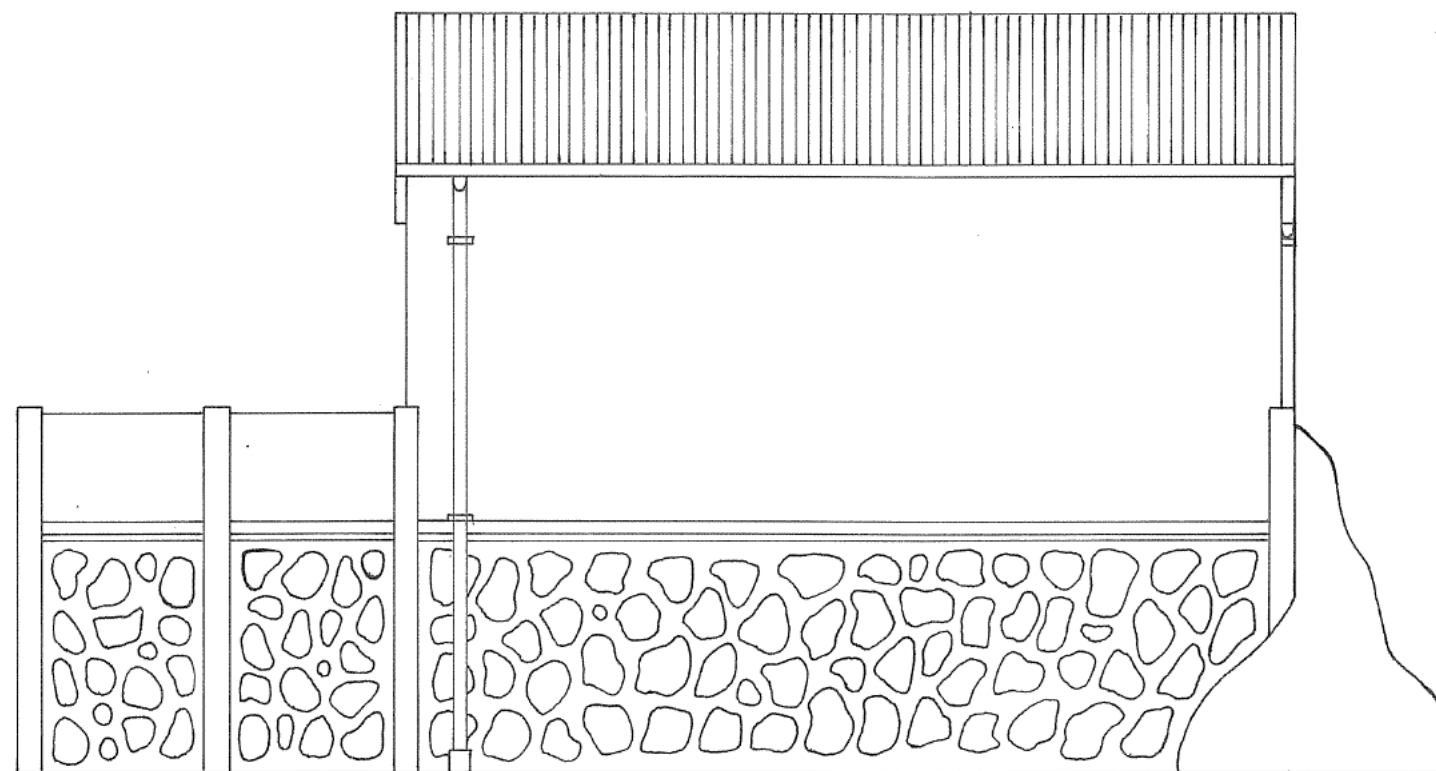
SCALE 1:50



EAST ELEVATION

MOUNT MAUNGANUI SURF CLUB

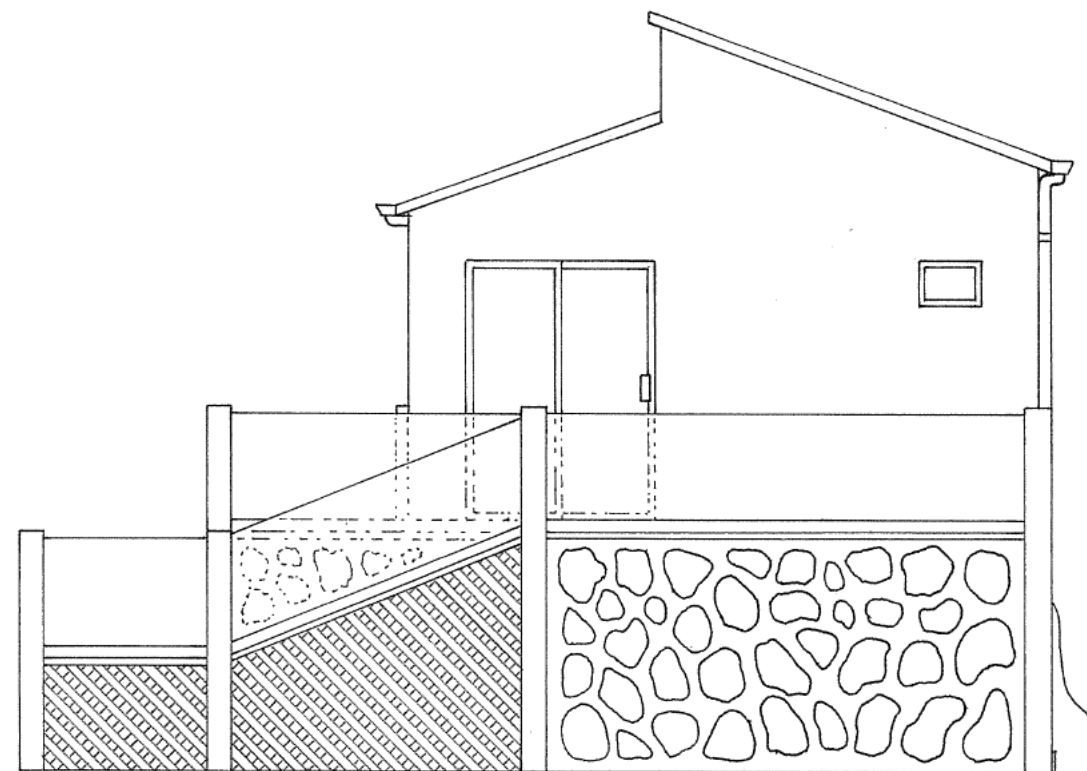
SCALE 1:50



SOUTH ELEVATION

MOUNT MAUNGANUI SURF CLUB

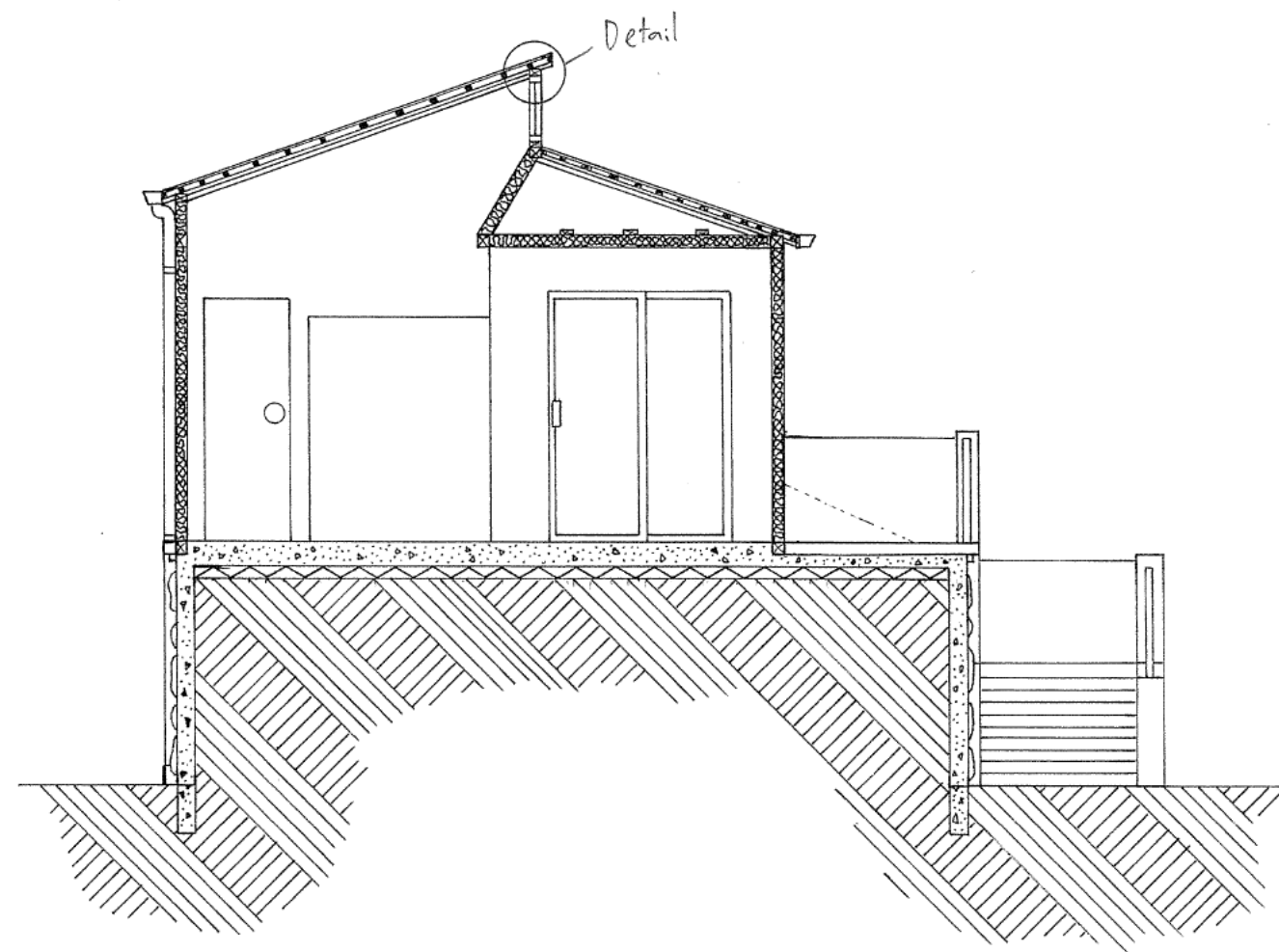
SCALE 1:50



WEST ELEVATION

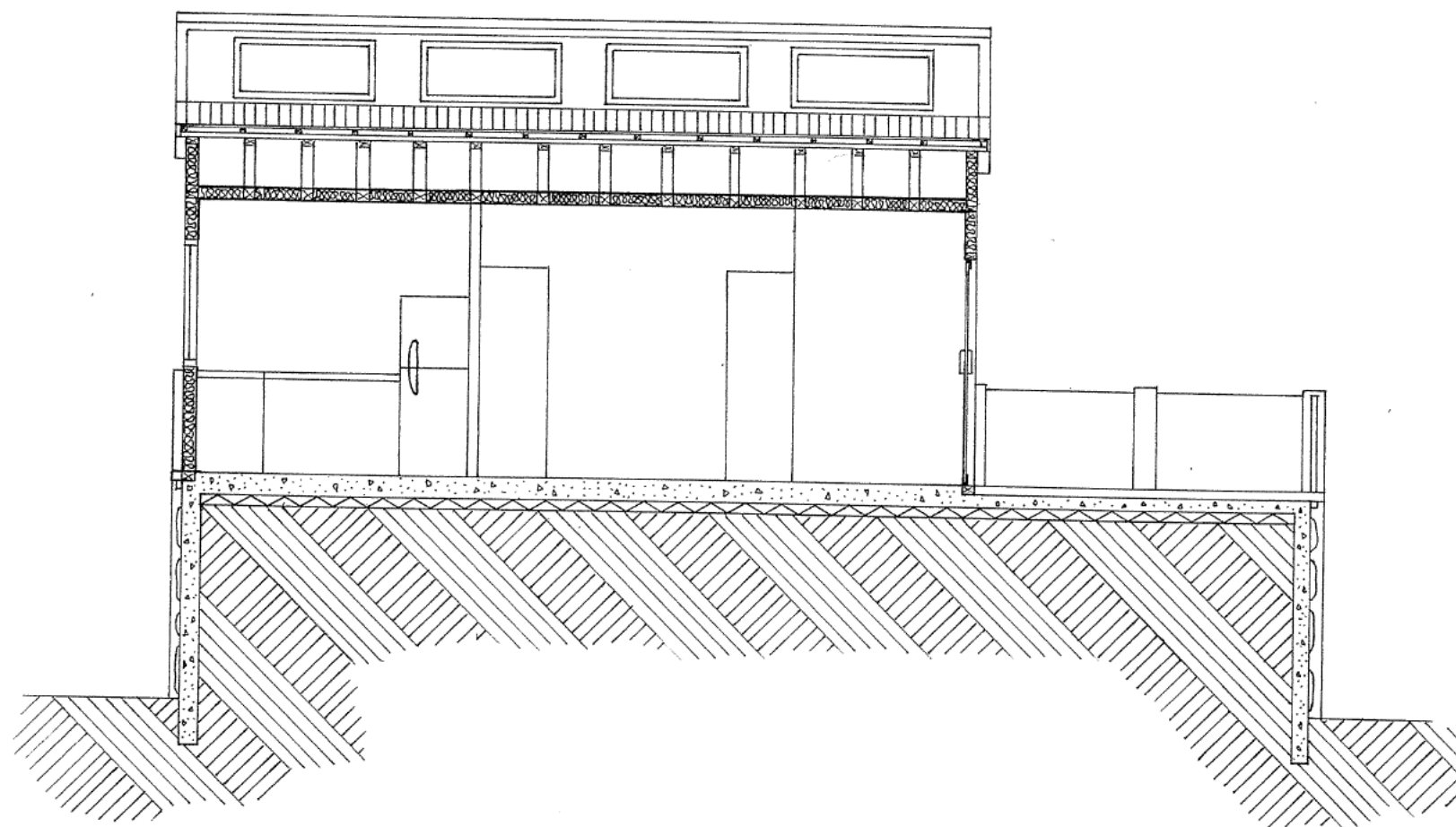
MOUNT MAUNGANUI SURF CLUB

SCALE 1:50



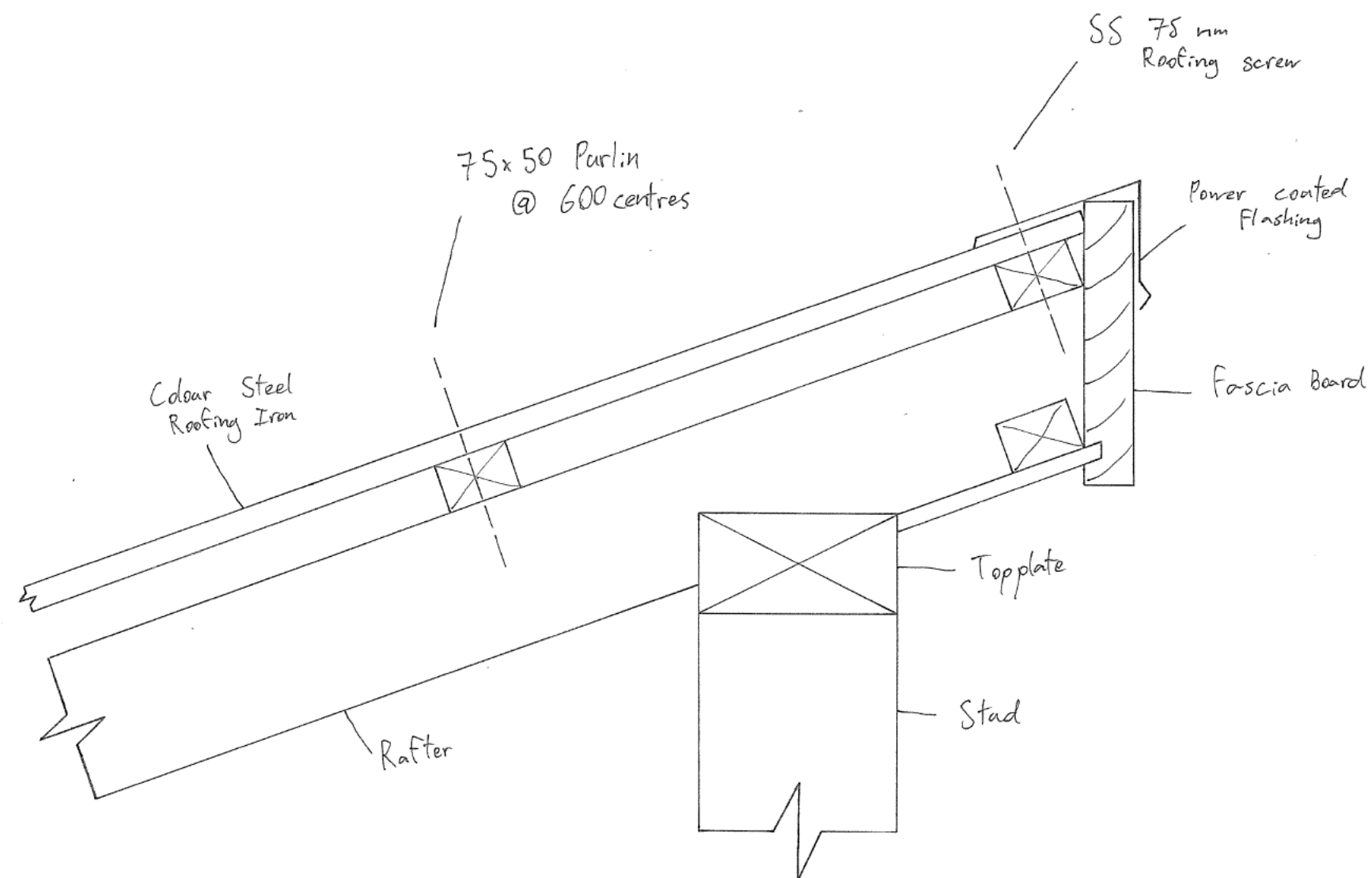
MOUNT MAUNGANAI SURF CLUB - SECTION BB

SCALE 1:50



MOUNT MAUNGANZI SURF CLUB - SECTION AA

SCALE 1:50



MOUNT MAUNGANUI SURF CLUB - Detail

SCALE 1:5



AS 91631 (3.34): Produce working drawings to communicate production details for a complex design (6 credits)

Achievement	Achievement with Merit	Achievement with Excellence
Produce working drawings to communicate production details for a complex design.	Produce working drawings to clearly communicate production details for a complex design.	Produce working drawings to effectively communicate production details for a complex design.
<ul style="list-style-type: none"> <li>Produce a <u>set of related instrumental</u> working drawings showing <u>exterior and interior detail</u> of components <u>related</u> to the construction and assembly of a <u>complex</u> design.</li> <li>Demonstrate an ability to use <u>drawing conventions and presentation techniques</u> to communicate details of a complex design.</li> </ul>	<ul style="list-style-type: none"> <li>Produce a <u>precise</u> set of related instrumental working drawings showing exterior and interior detail of components that <del>explains</del> the construction and assembly of a complex design.</li> <li>Demonstrate an ability to <u>accurately apply</u> drawing conventions and presentation techniques to <del>clearly</del> communicate details of a complex design.</li> </ul>	<ul style="list-style-type: none"> <li>Produce a precise and <u>cohesive</u> set of related instrumental working drawings through the <del>appropriate selection of views and modes</del> that enable the construction and/or assembly of a complex design.</li> <li>Demonstrate an ability to accurately apply drawing conventions and presentation techniques to clearly communicate <u>production</u> details of a complex design.</li> </ul>

Commentary: This submission is assessed at Achievement.

It shows a set of related complex plans for a surf club building and has been produced using conventional hand drawn mode.

This includes (helping it meet this grade):

- hand drawn plans showing precision and accuracy
- a dimensioned floor plan with north point symbol, room space information and correct use of labelling
- a set of corresponding elevations matching the north point orientation shown on the plan
- two sectional views showing good detail and matching the orientation indicated in the plan.
- the correct use of drawing conventions such as recognised scales, dimensioning and symbols.
- one call-out detail as indicated on the cross section.

This submission could have scored a higher grade with a greater number of detail call-outs. Perhaps the inclusion of a foundation/footing detail would have helped meet the “clearly communicate details of a complex design” and the “explains the construction and assembly of a design” requirements.