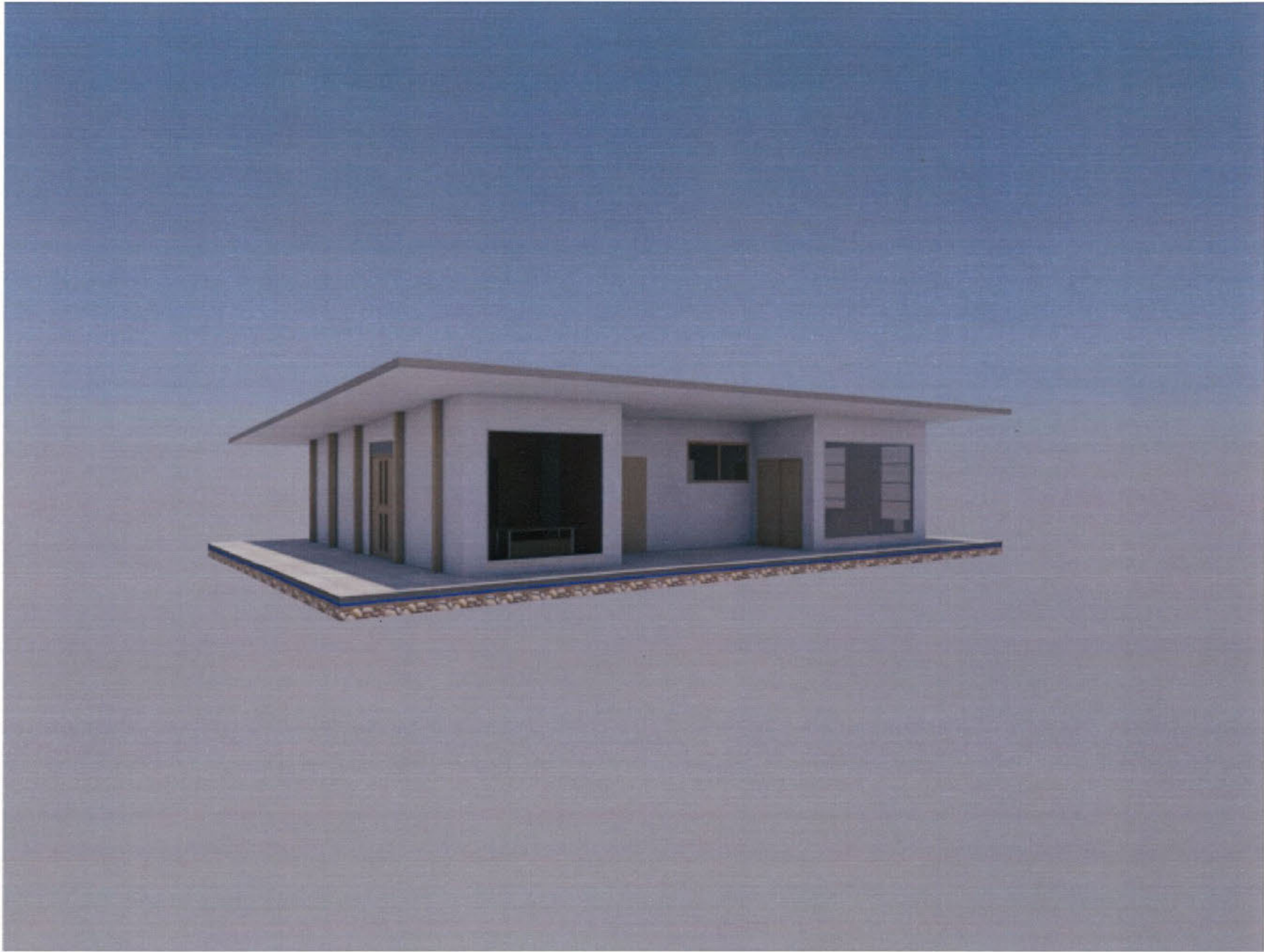
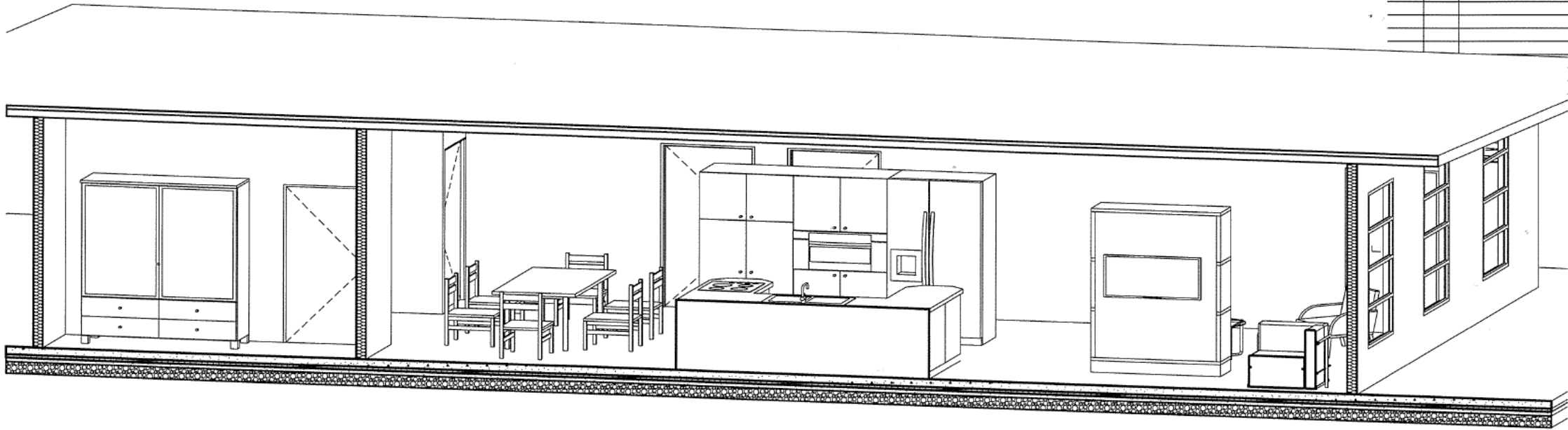


RevID	ChID	Revision	Date



RETREAT PRESENTATION	
31/10/2017	SHEET 1

RevID	CHID	Revision	Date



3 3D CUTAWAY (1) 1:50



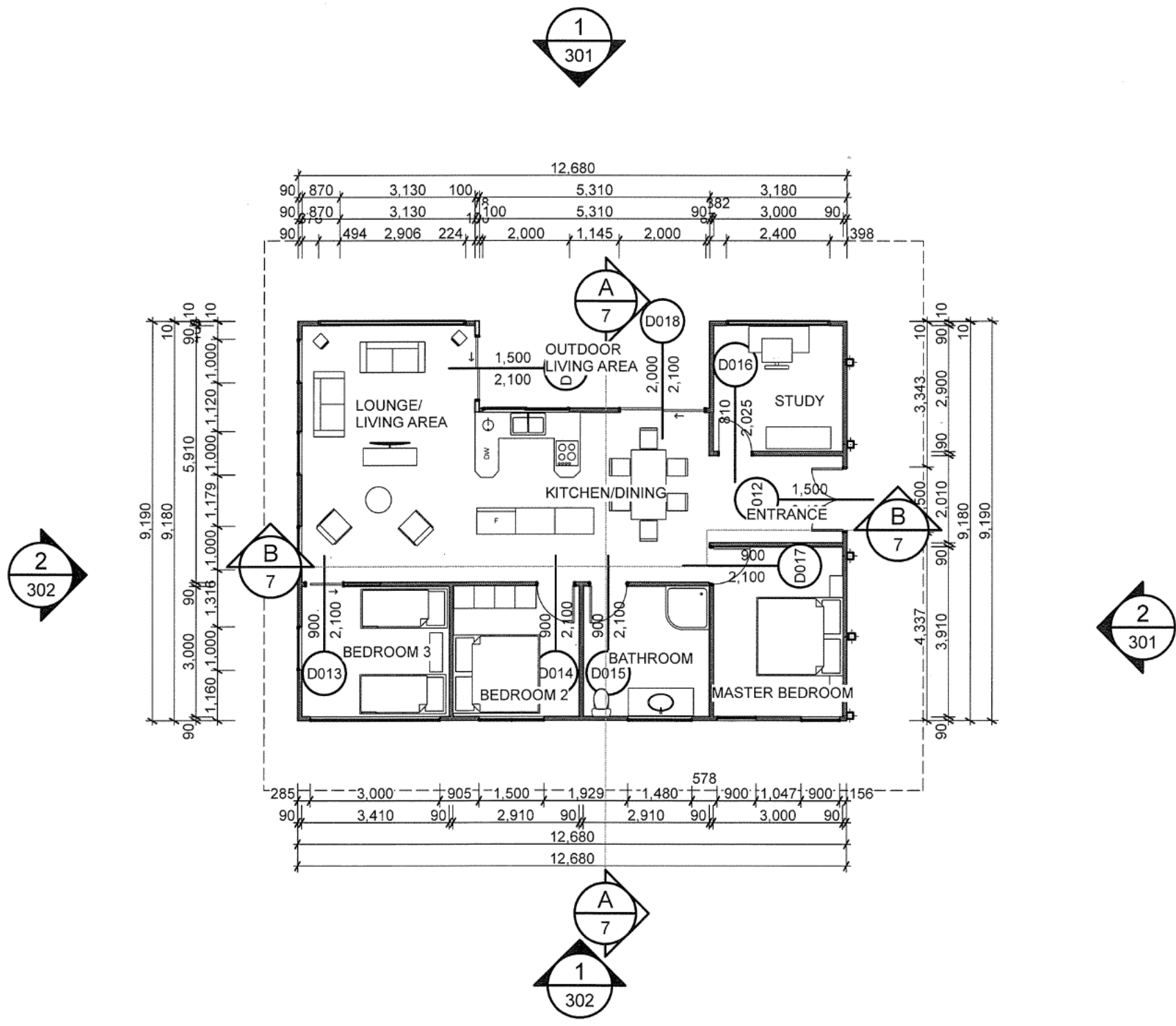
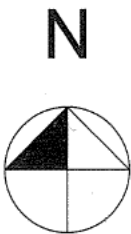
1 EXTERIOR VIEW (1) 1:100



2 INTERIOR KITCHEN/DINING 1:100

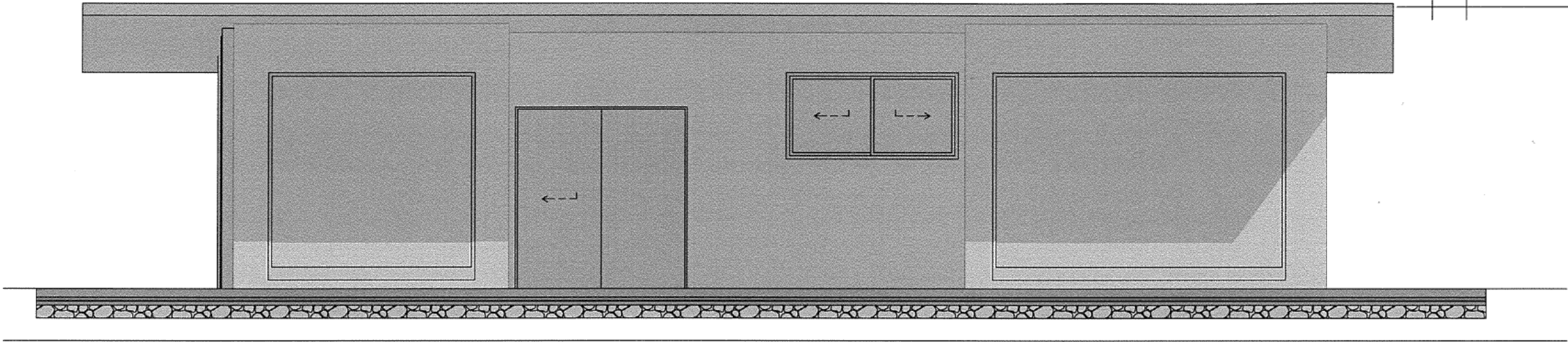
PRESENTATION DRAWINGS	
	SCALE AS SHOWN
31/10/2017	SHEET 2

RevID	CHID	Revision	Date

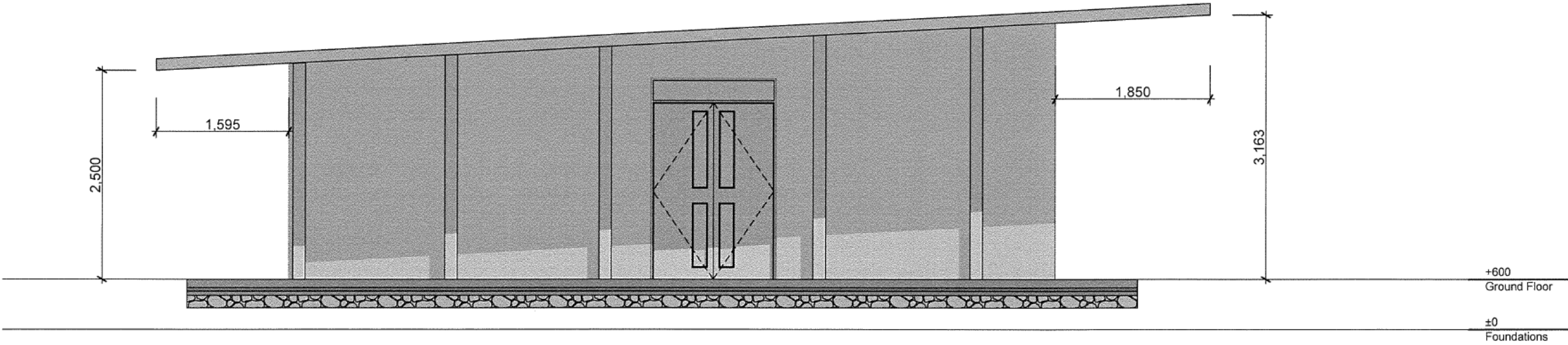


RETREAT FLOOR PLAN	
	SCALE 1:100
31/10/2017	SHEET 3

RevID	ChID	Revision	Date



1 North Elevation 1:50

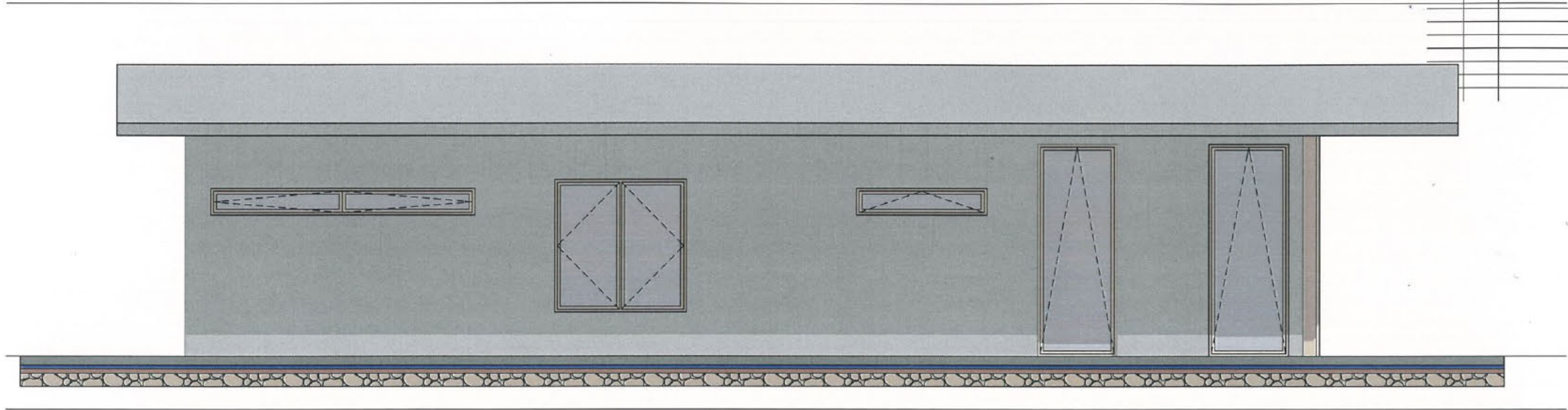


2 East Elevation 1:50

ELEVATION VIEW	
	SCALE 1:50
31/10/2017	SHEET 4



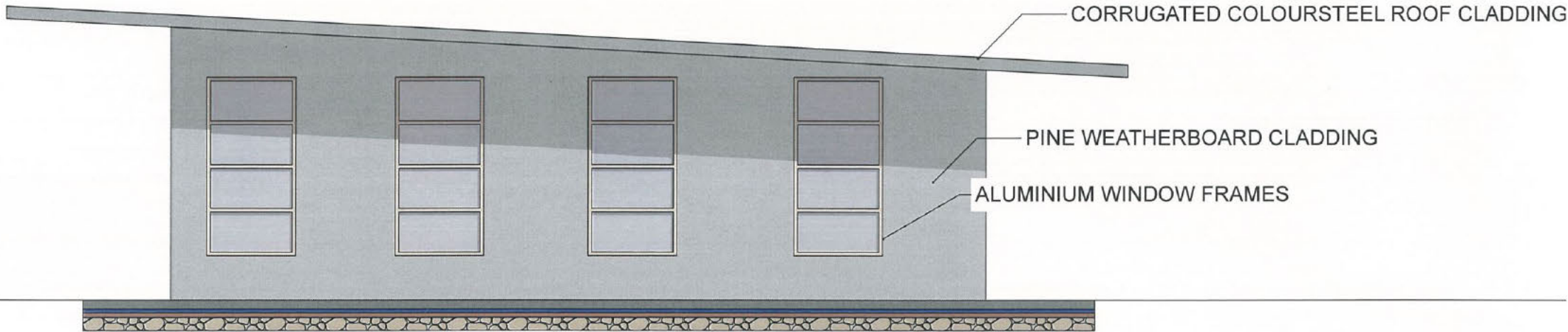
RevID	ChID	Revision	Date



1

South Elevation (1)

1:50

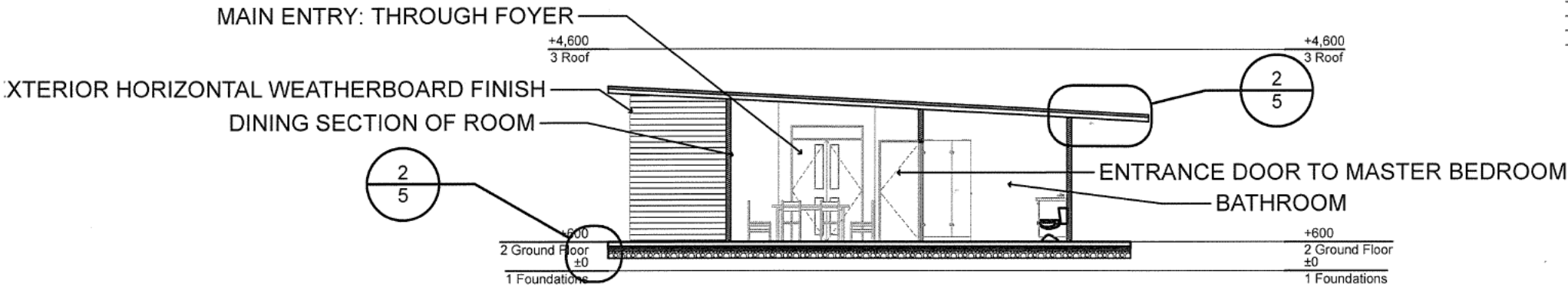


West Elevation

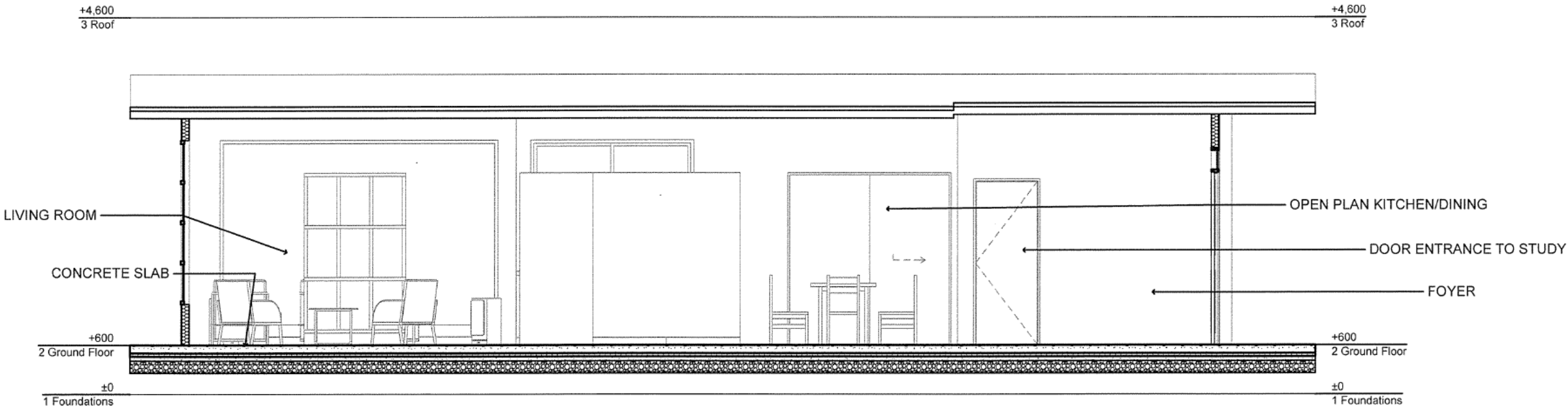
1:50

ELEVATION VIEW	
	SCALE 1:50
31/10/2017	SHEET 5

RevID	ChID	Revision	Date

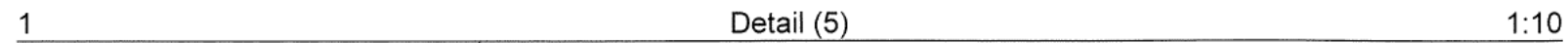
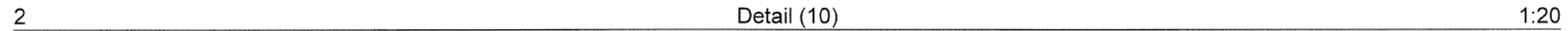


Section AA (2) 1:100



2 Section BB (1) 1:50

SECTIONS	
	SCALE AS SHOWN
31/10/2017	SHEET 6



CONSTRUCTION DETAILS	
	SCALE AS SHOWN
31/10/2017	SHEET 7



AS 91631 (3.34): Produce working drawings to communicate production details for a complex design (6 credits)

Achievement	Achievement with Merit	Achievement with Excellence
Produce working drawings to communicate production details for a complex design.	Produce working drawings to clearly communicate production details for a complex design.	Produce working drawings to effectively communicate production details for a complex design.
<ul style="list-style-type: none"> <li>Produce a <u>set of related instrumental</u> working drawings showing <u>exterior and interior detail</u> of components <u>related</u> to the construction and assembly of a <u>complex</u> design.</li> <li>Demonstrate an ability to use <u>drawing conventions and presentation techniques</u> to communicate details of a complex design.</li> </ul>	<ul style="list-style-type: none"> <li>Produce a <u>precise</u> set of related instrumental working drawings showing exterior and interior detail of components that <del>explains</del> the construction and assembly of a complex design.</li> <li>Demonstrate an ability to <u>accurately apply</u> drawing conventions and presentation techniques to <del>clearly</del> communicate details of a complex design.</li> </ul>	<ul style="list-style-type: none"> <li>Produce a precise and <u>cohesive</u> set of related instrumental working drawings through the <del>appropriate selection of views and modes</del> that enable the construction and/or assembly of a complex design.</li> <li>Demonstrate an ability to <del>to</del> accurately apply drawing conventions and presentation techniques to clearly communicate <u>production</u> details of a complex design.</li> </ul>



Commentary: This submission is assessed at Achievement.

It shows a set of related complex plans for a small dwelling and has been produced using CAD.

This includes (helping it meet this grade):

- precision and accuracy helped by the use of CAD
- a series of pictorial illustrative views to help visualise the design
- a fully dimensioned floor plan with north point symbol, room space information and correct use of labelling
- a set of corresponding elevations matching the north point orientation shown on the plan
- two sectional views which match the orientation shown on the plan.
- the correct use of drawing conventions such recognised scales, dimensioning and titling.
- two call-out details as indicated on the cross section.

This submission could have scored a higher grade with a better selection of details i.e. detail “2” does not show any valuable information at all. Perhaps a foundation/footing detail would have been better and would have meet the “clearly communicate details of a complex design” and the “explains the construction and assembly of a design” requirements.

Section AA could have shown more information if it had also been drawn to the same scale as BB i.e. 1:50

The labelling on the sectional view does not match those shown on the details.