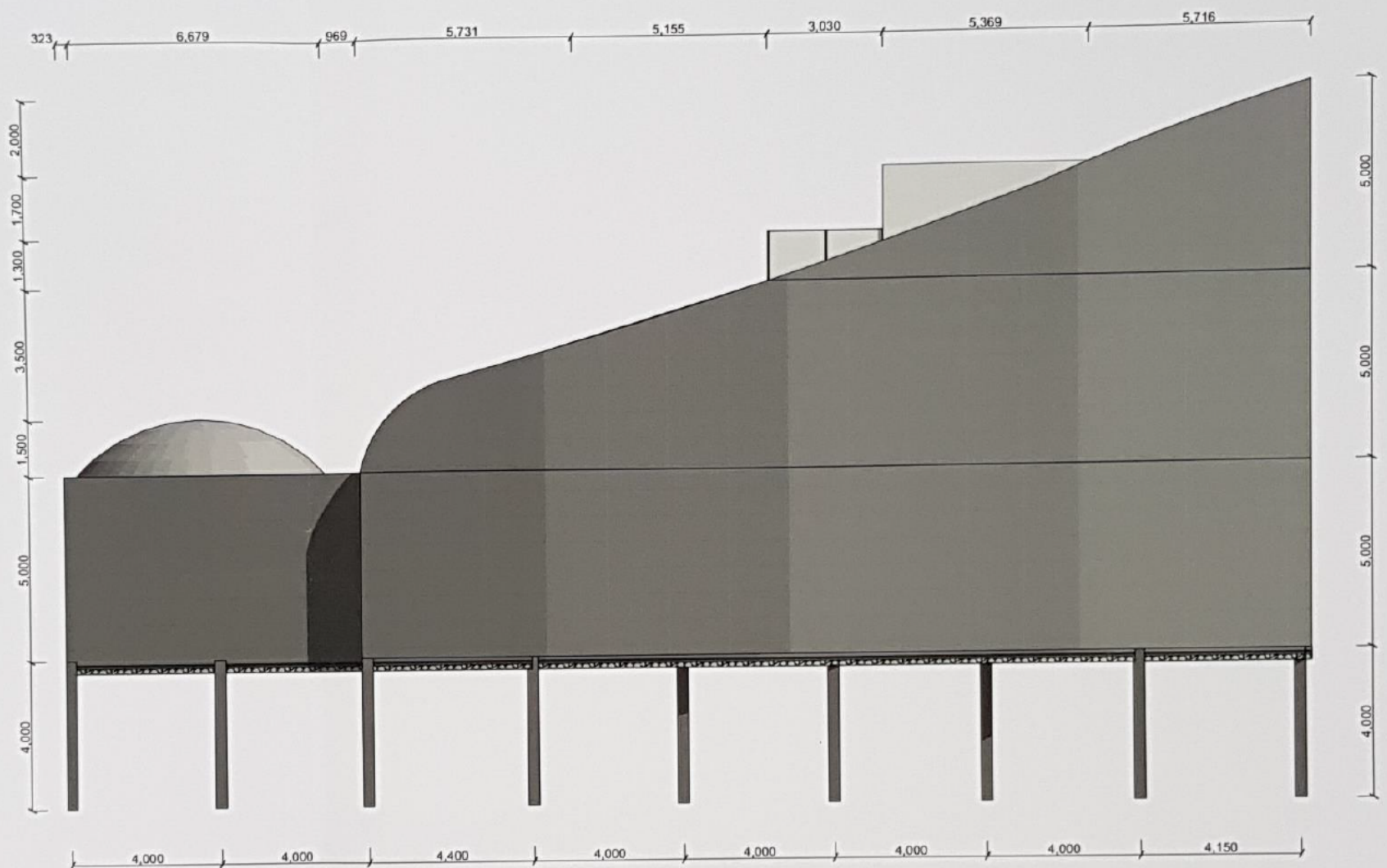


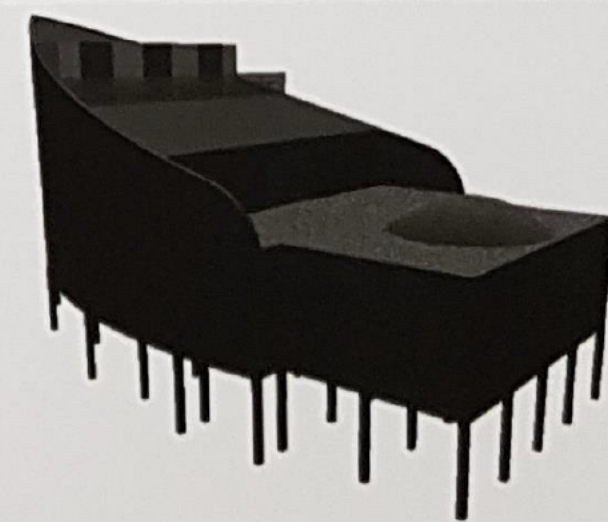
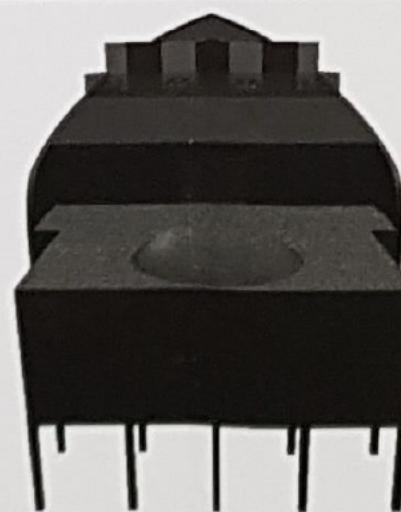
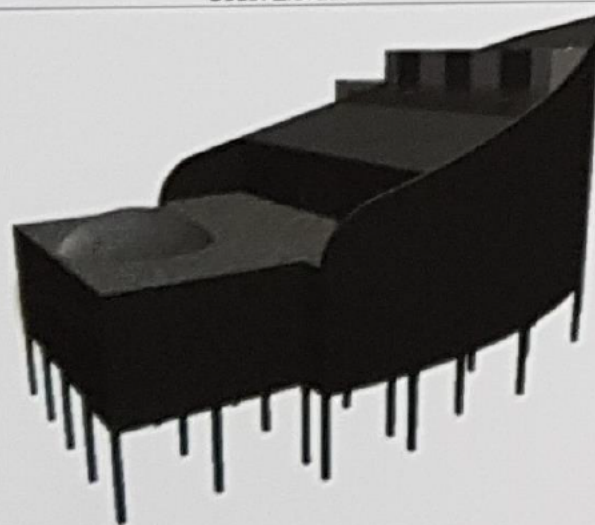
South Elevation

1:100



East Elevation (2)

1:100



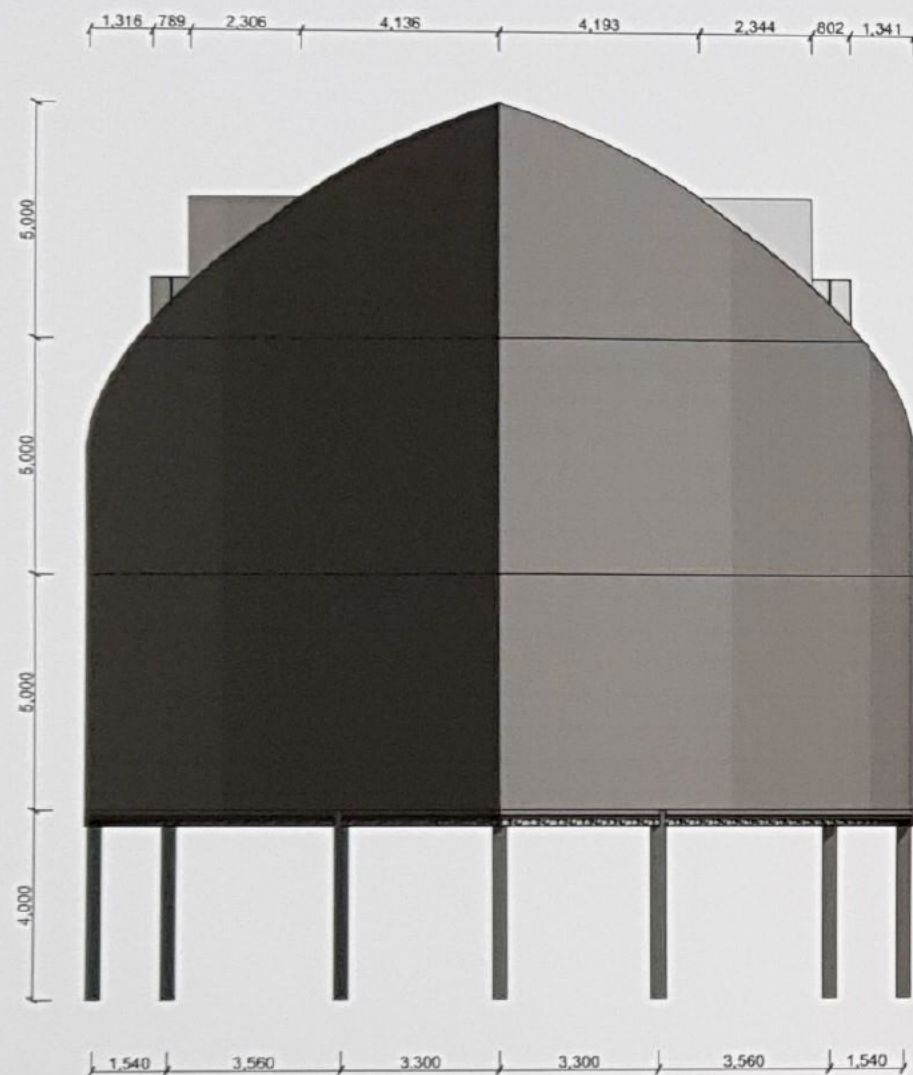
2017- Cafe Planetarium Project

Student: [Redacted]
Program: ArchiCAD

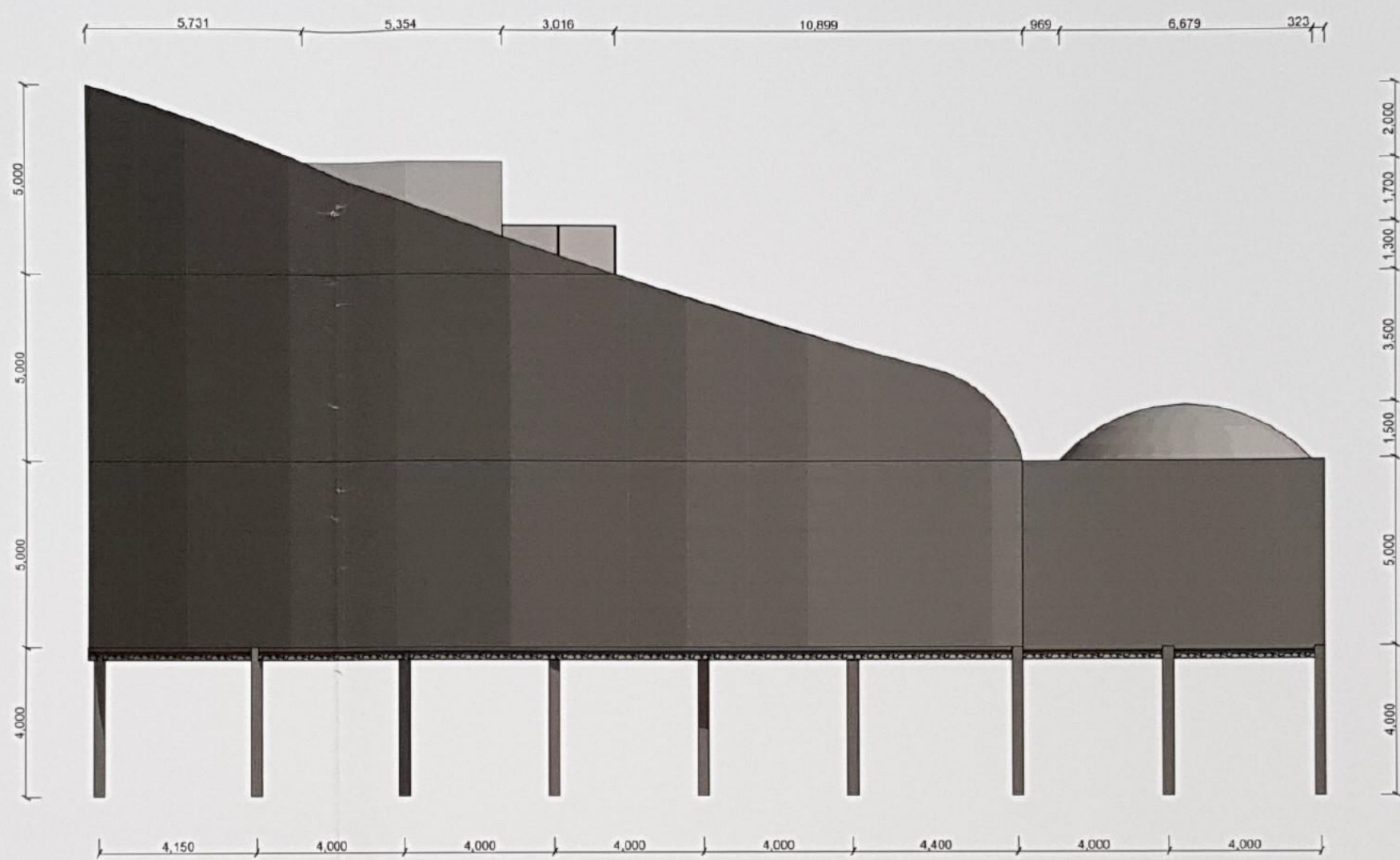
Drawing Title
Formal Drawing - Eveluation 1

Scale
1:100

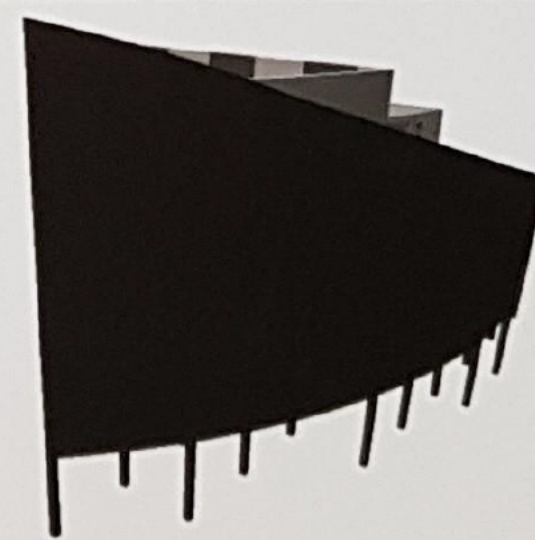
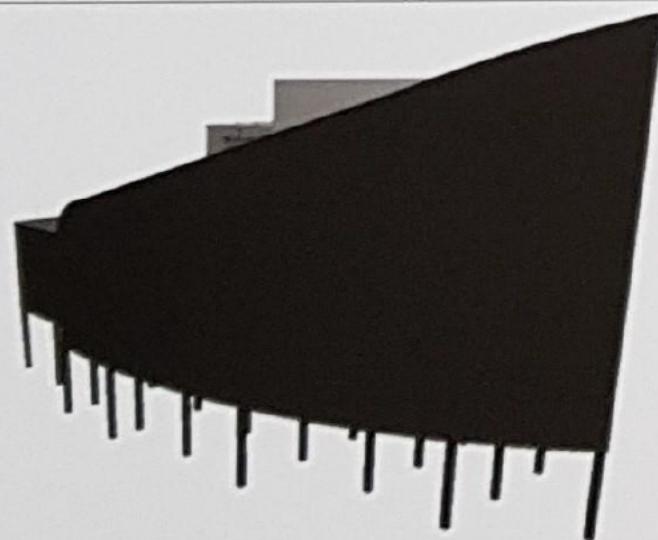
Drawing Number
P4 - P5



1 North Elevation (2) 1:100



2 West Elevation 1:100



2017- Cafe Planetarium Project

Student:
Program: ArchiCAD

Drawing Title
Formal Drawing - Eveluation 2

Scale
1:100

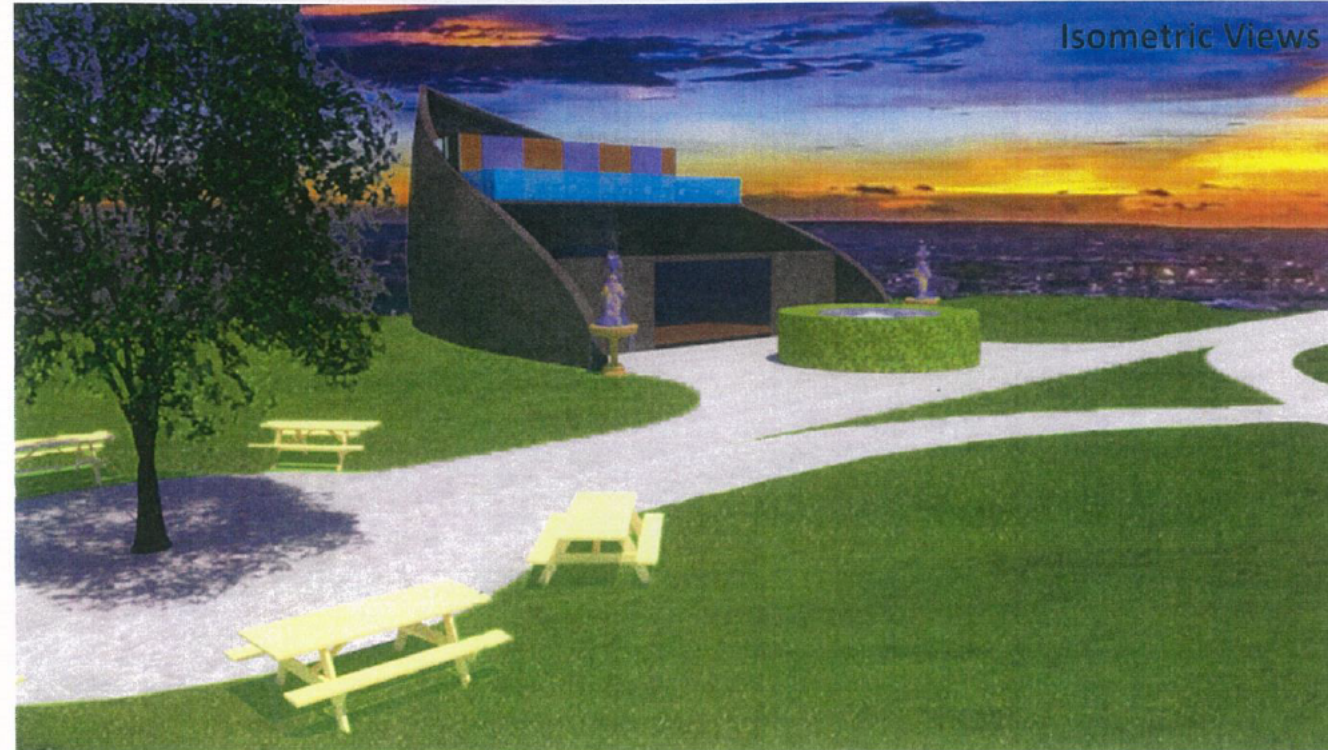
Drawing Number
P6 - P7

Final Design

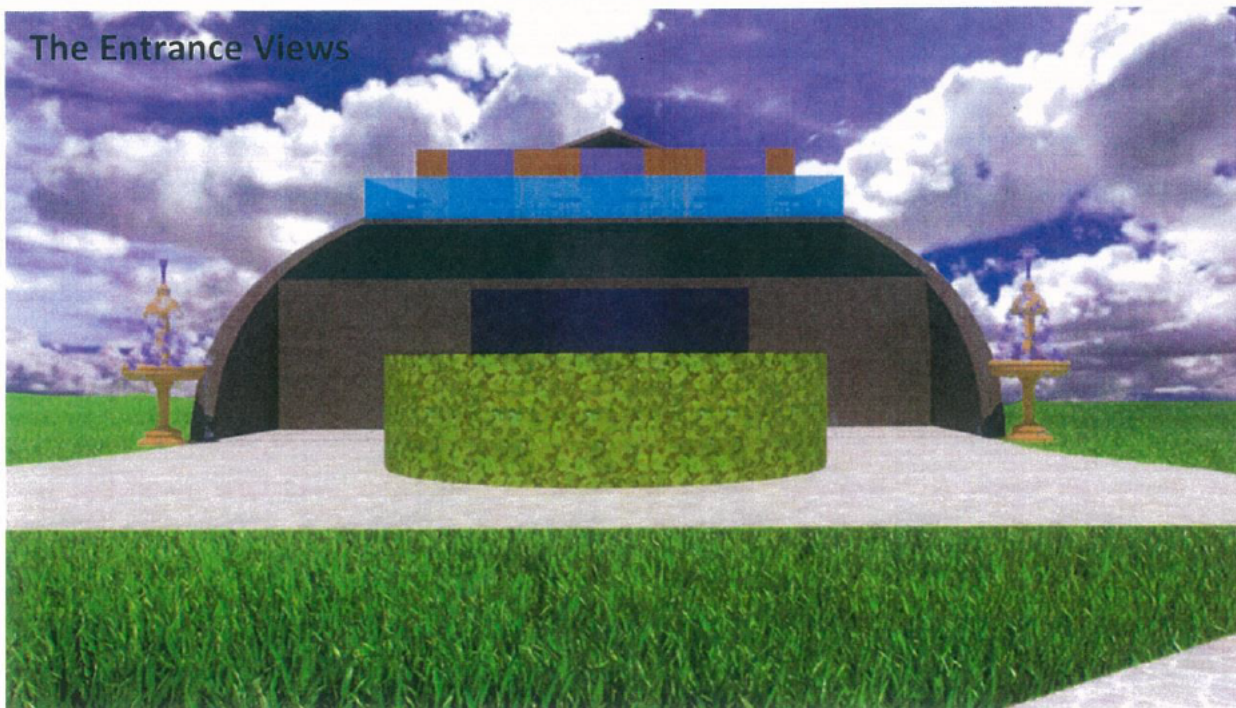
The Bird Views



Isometric Views

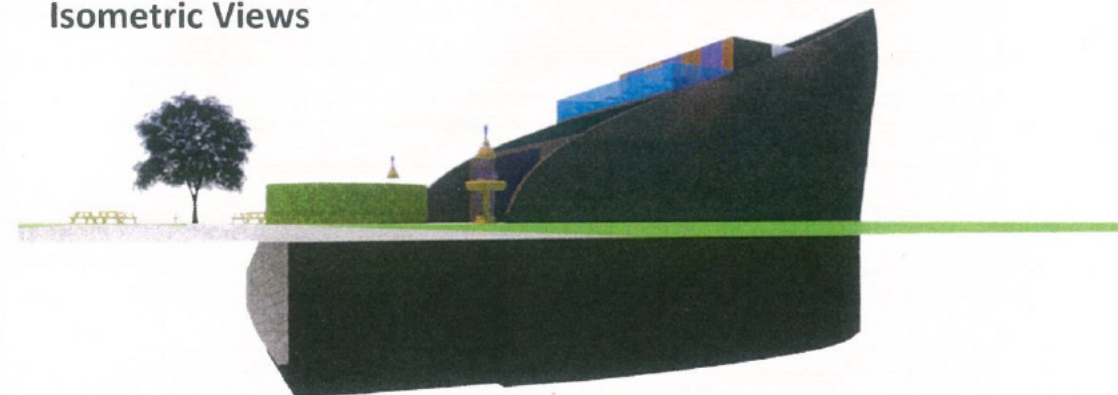


The Entrance Views

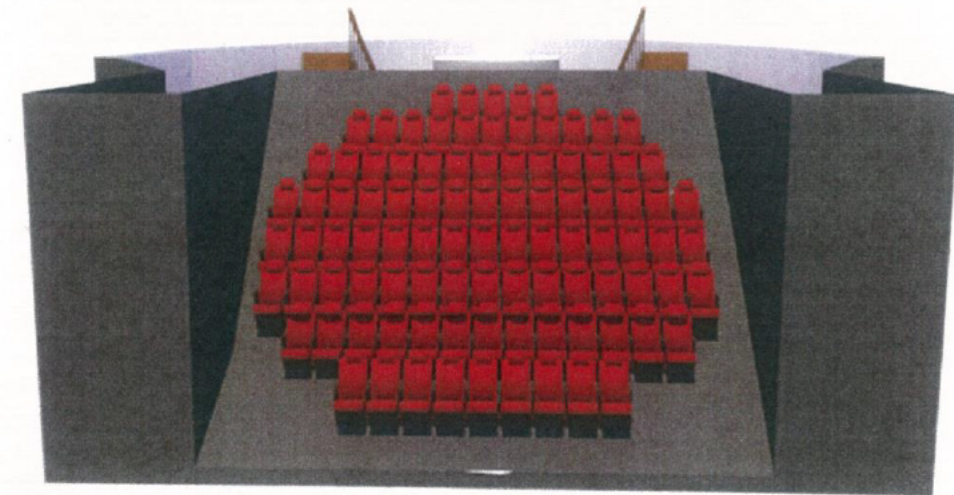
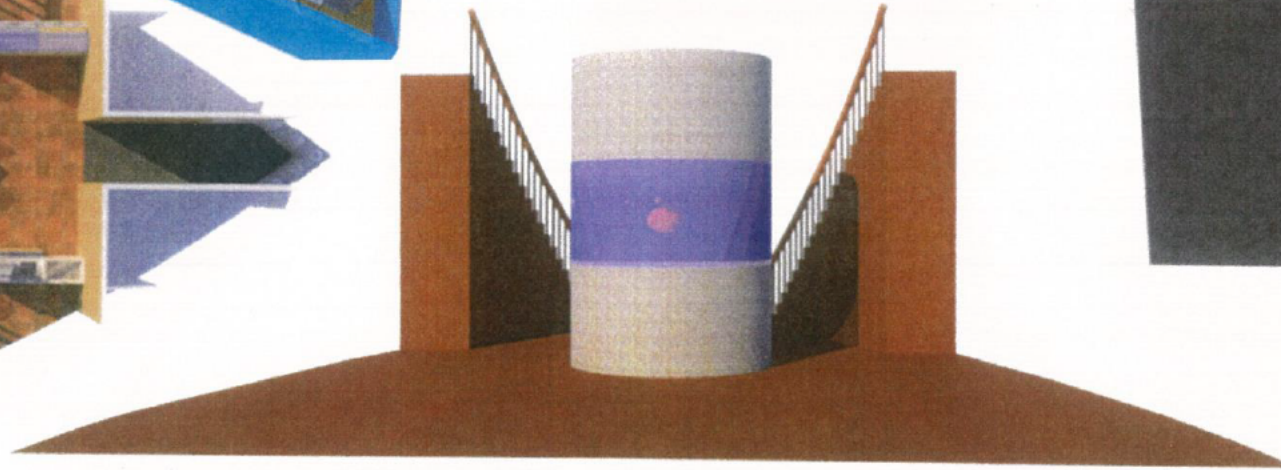
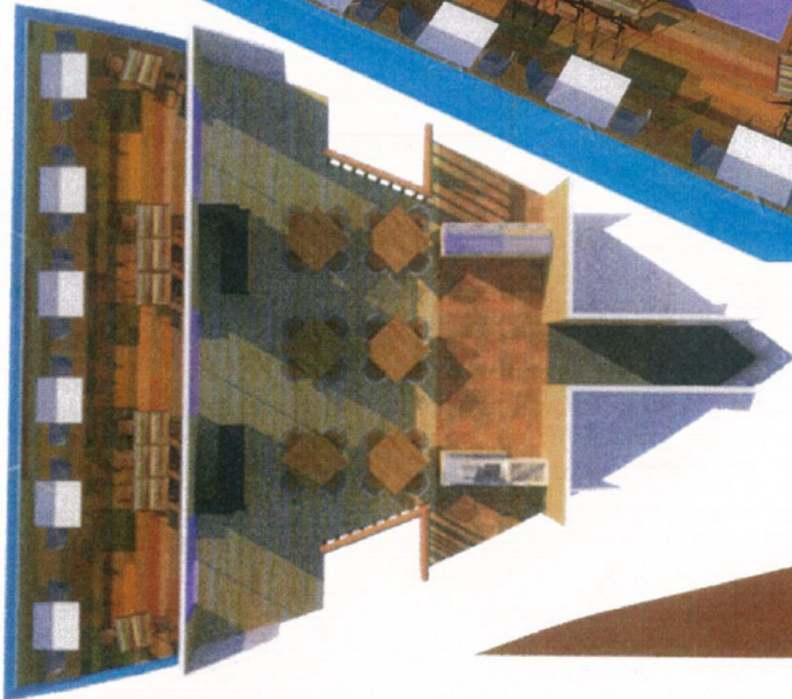
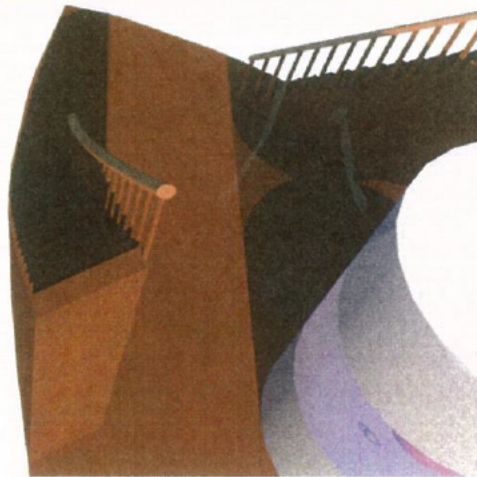
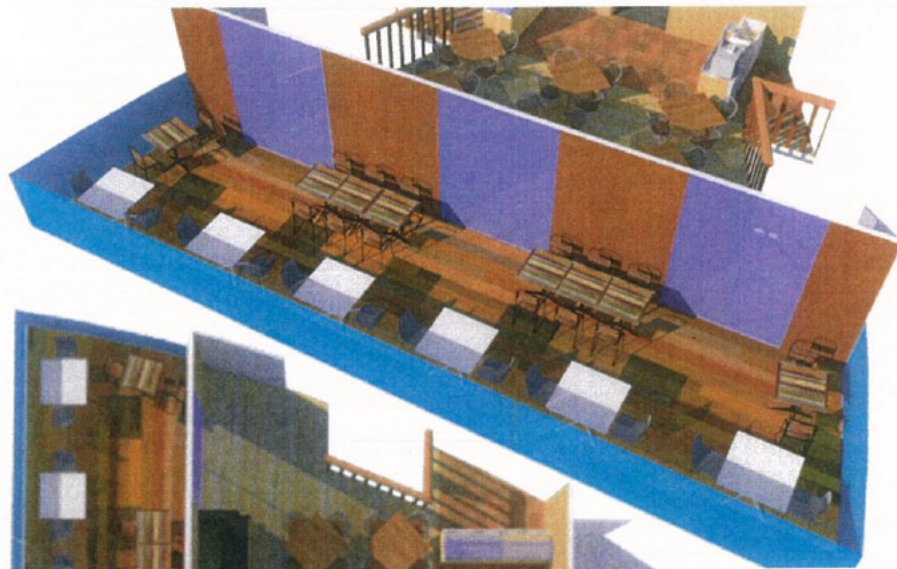
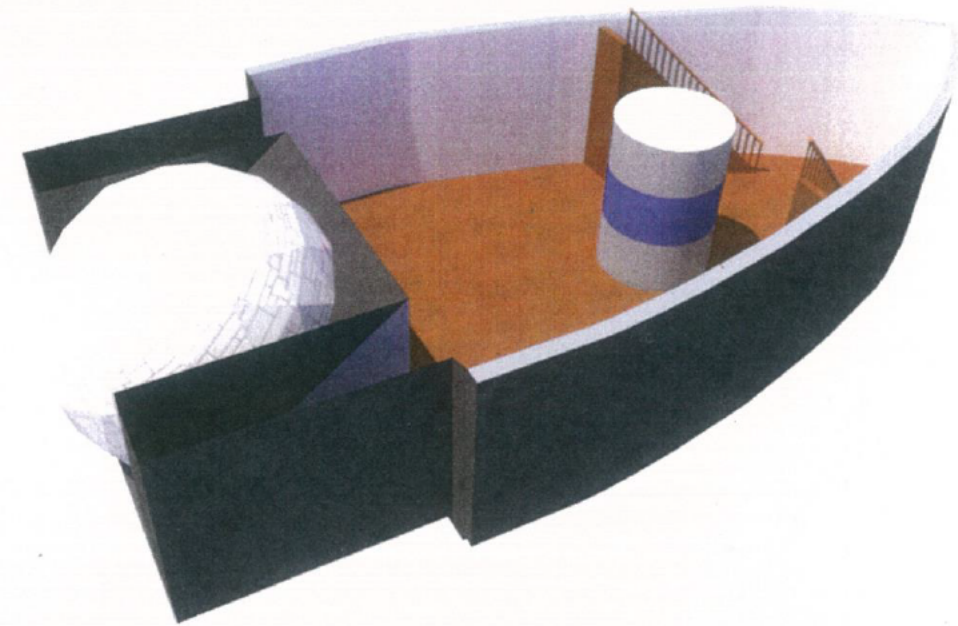
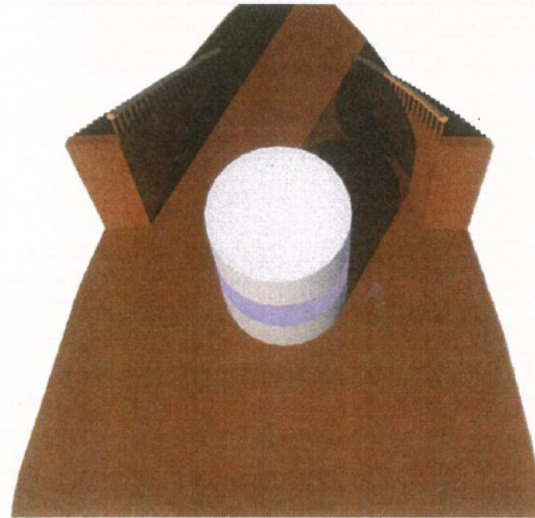
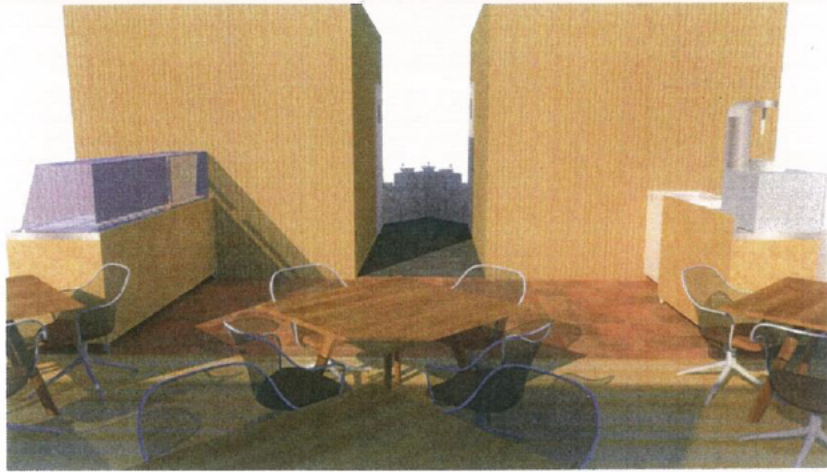


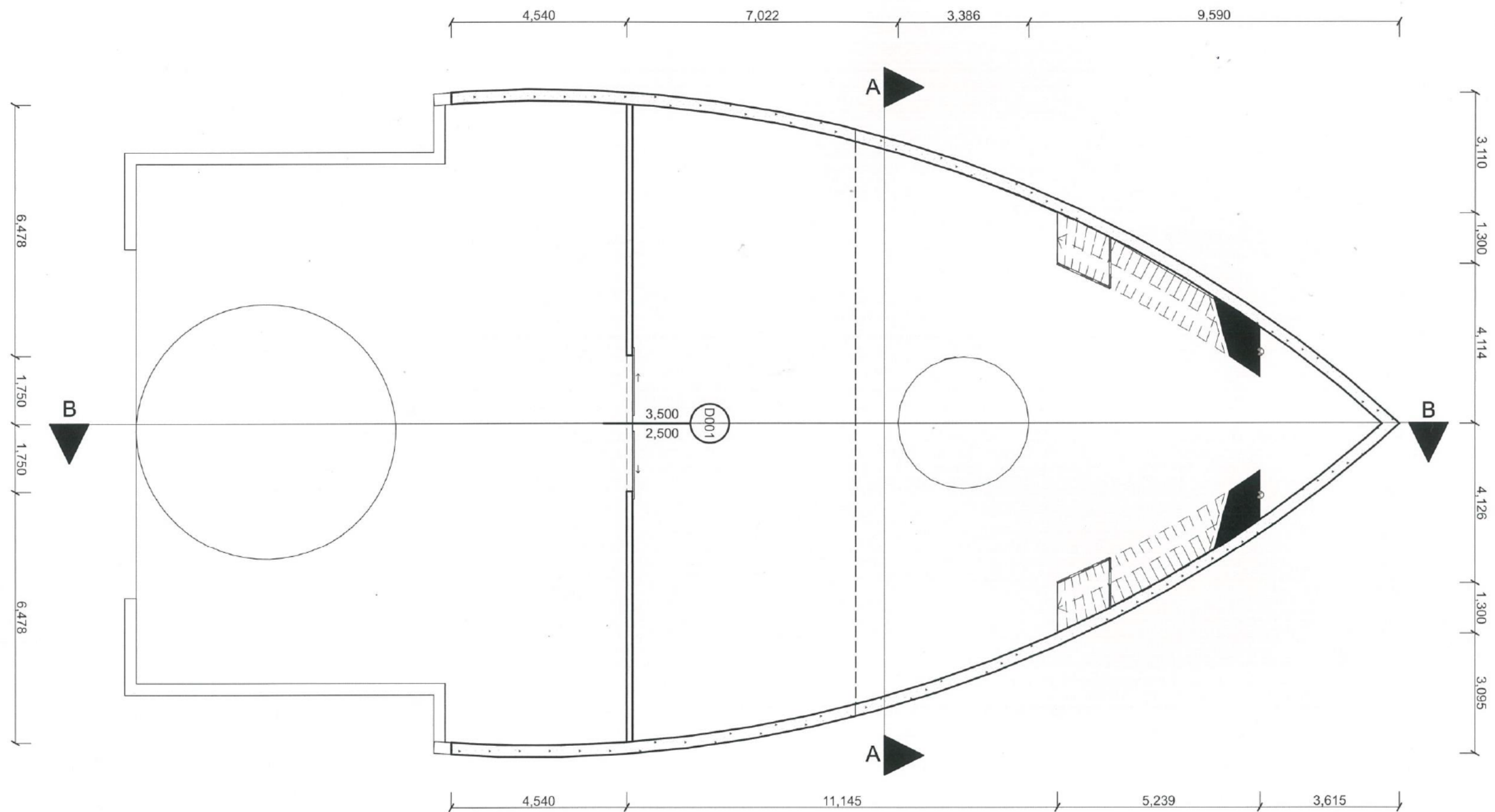
These are all the different views for my final design. It's the planetarium café, there is a café at the second floor and underground planetarium dome. I develop the design lots of times and used the special design knowledge solved all the issues and the specifications.

Isometric Views

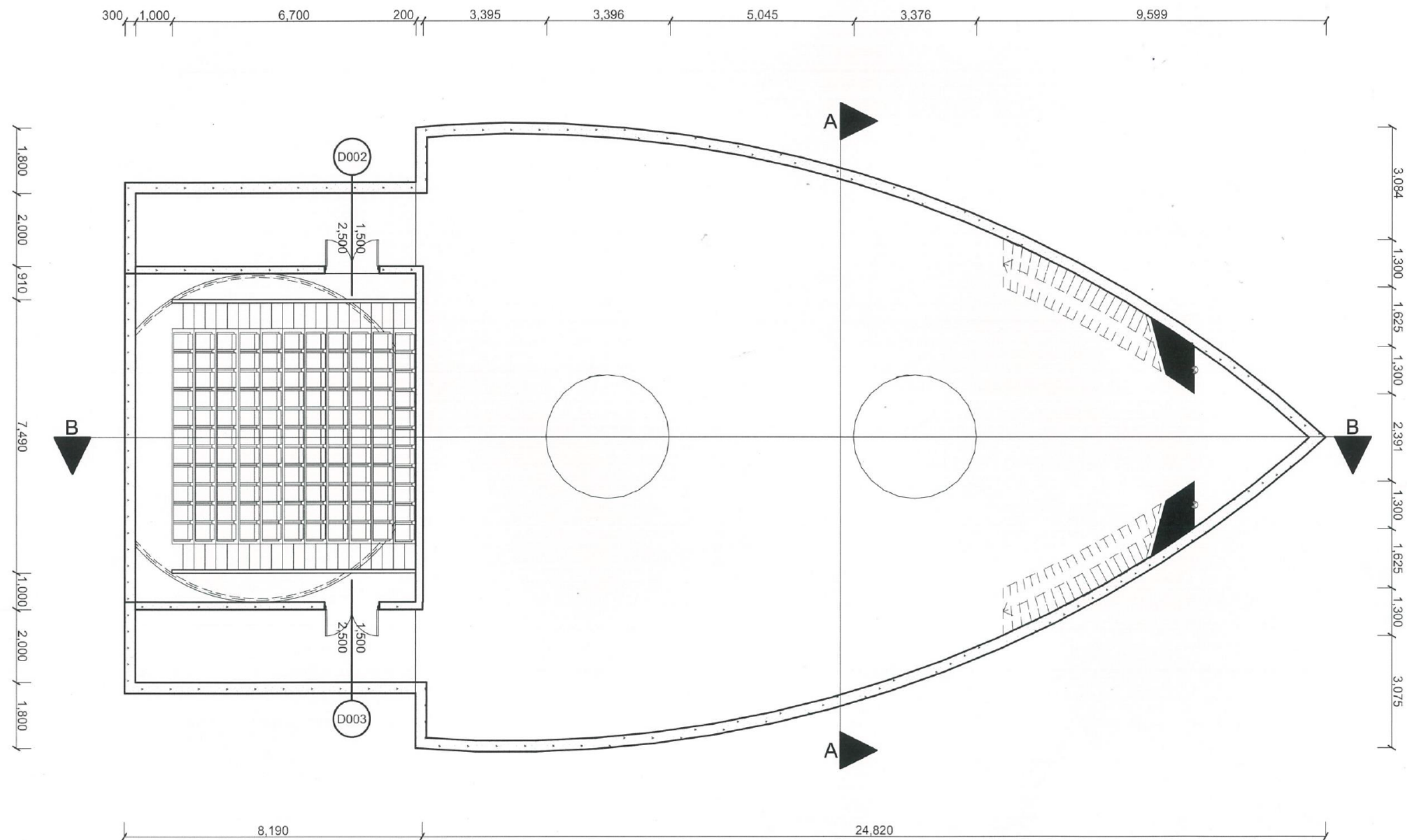


Final Design





	2017- Cafe Planetarium Project	Student: Program: ArchiCAD	Drawing Title Formal Drawing - Floor Plan 2	Scale 1:100	Drawing Number P2
--	---------------------------------------	-------------------------------	---	-----------------------	-----------------------------



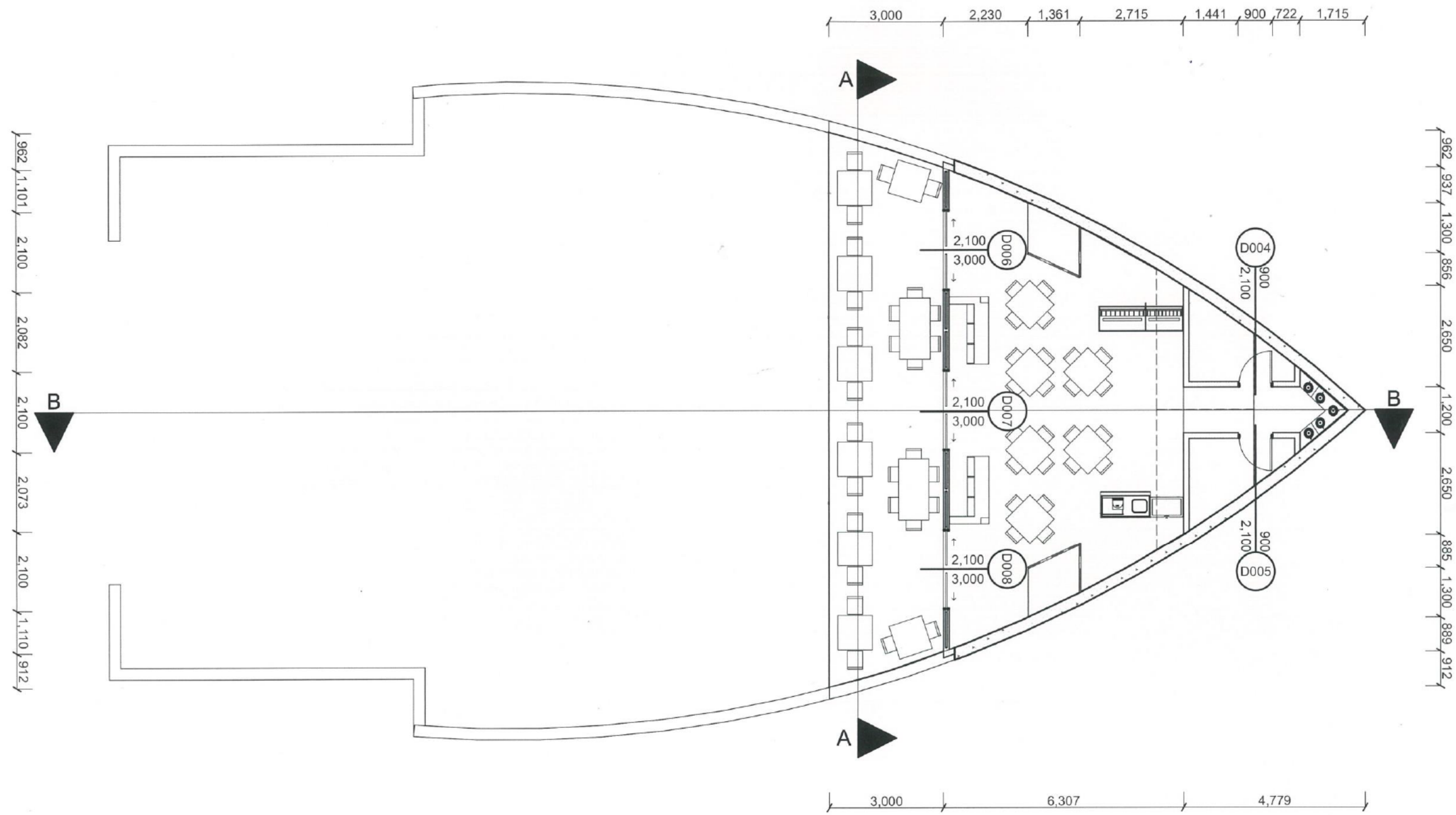
2017- Cafe Planetarium Project

Student:
Program: ArchiCAD

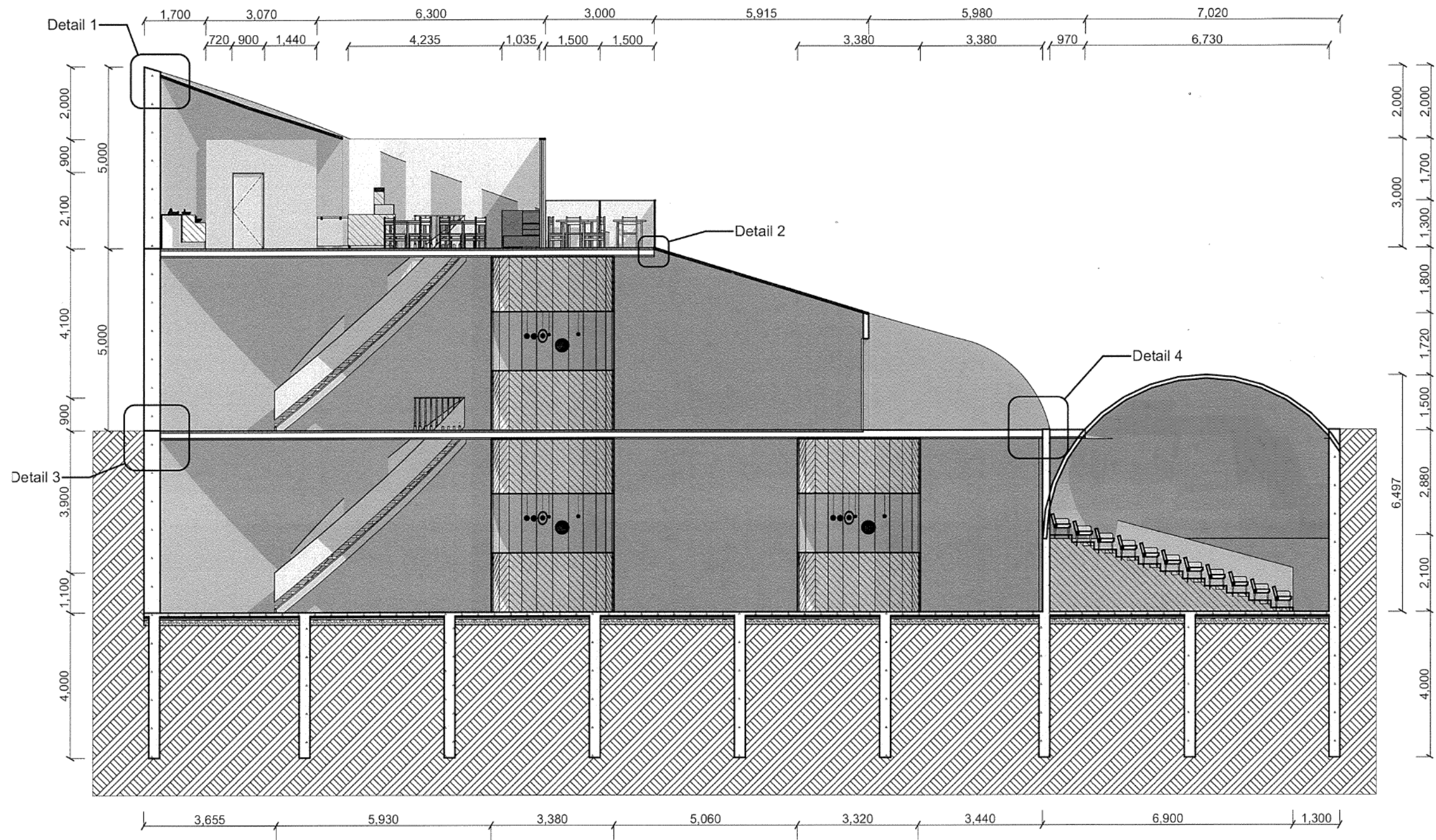
Drawing Title
Formal Drawing - Floor Plan 1

Scale
1:100

Drawing Number
P1



	2017- Cafe Planetarium Project	Student: Program: ArchiCAD	Drawing Title Formal Drawing - Floor Plan 3	Scale 1:100	Drawing Number P3
--	---------------------------------------	-------------------------------	---	-----------------------	-----------------------------

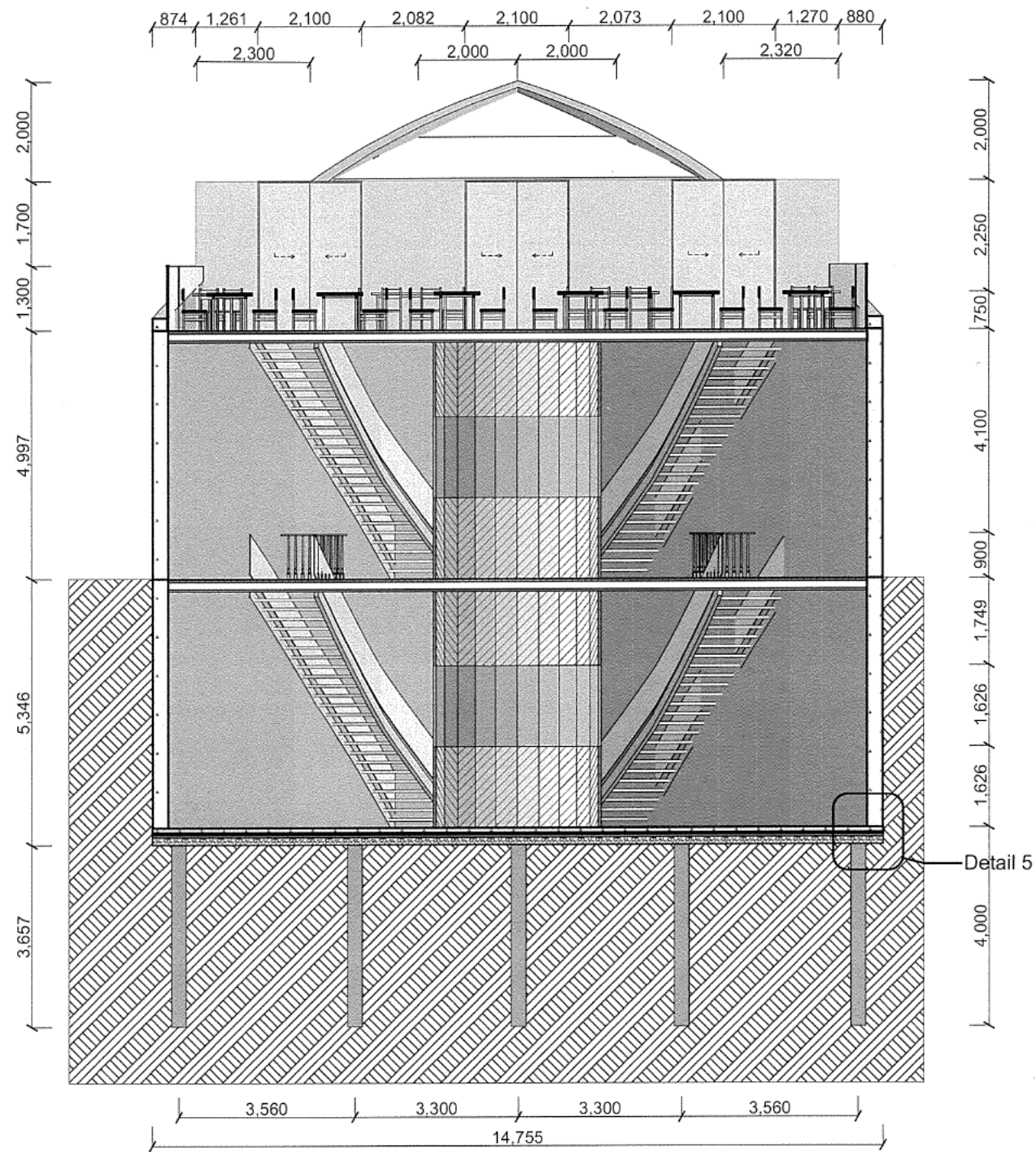


1

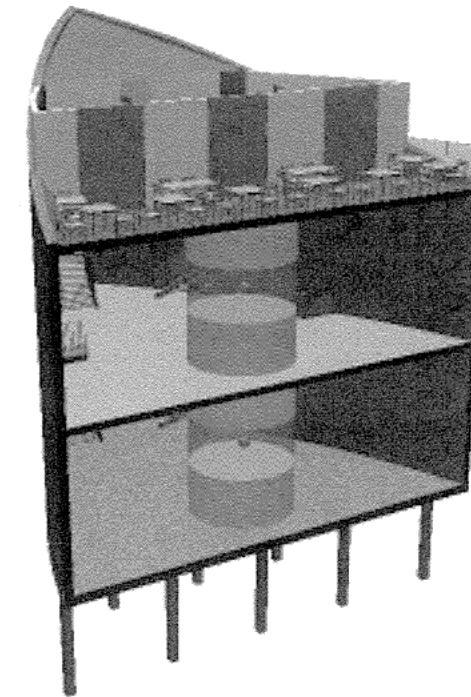
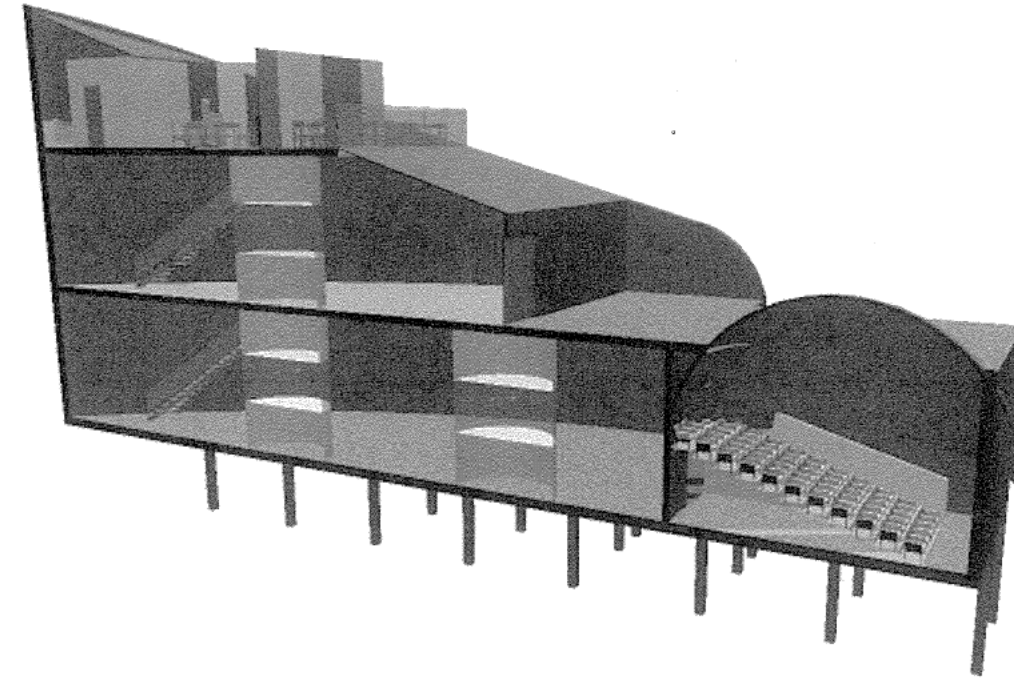
Cross Section BB

1:100

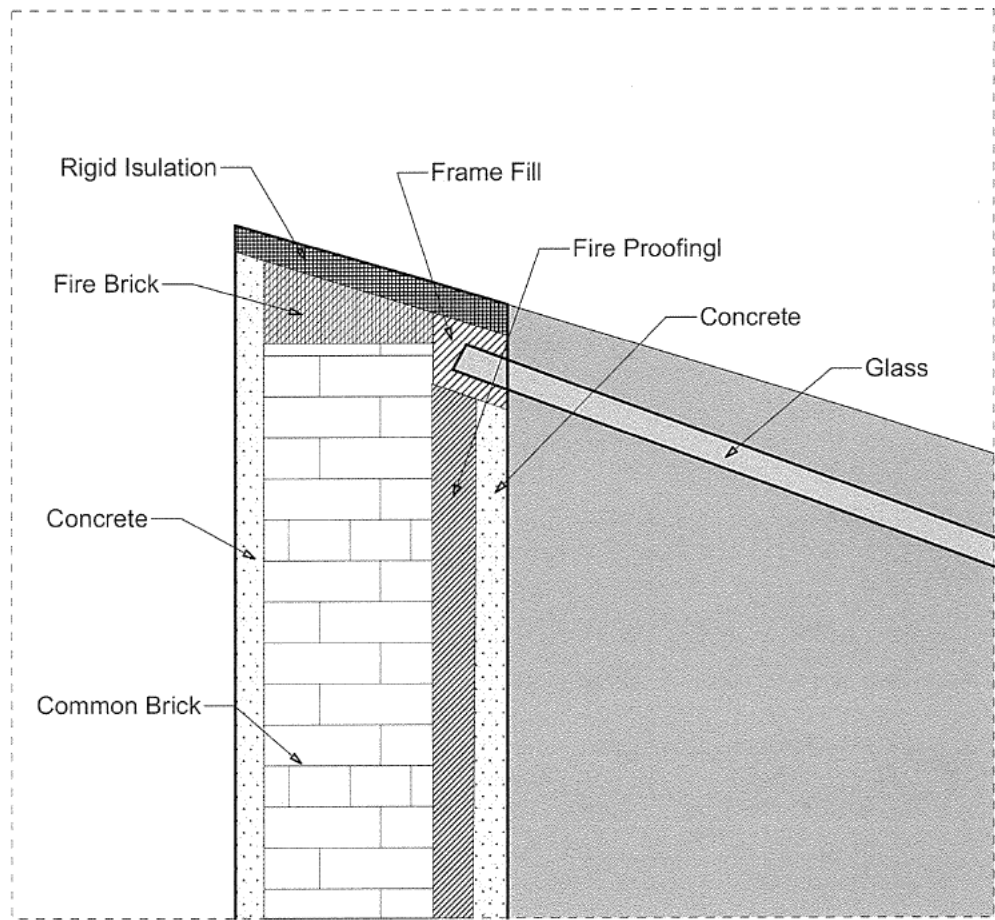
	2017- Cafe Planetarium Project	Student: Program: ArchiCAD	Drawing Title Formal Drawing - Cross Section	Scale 1:100	Drawing Number P9
--	---------------------------------------	-------------------------------	--	-----------------------	-----------------------------



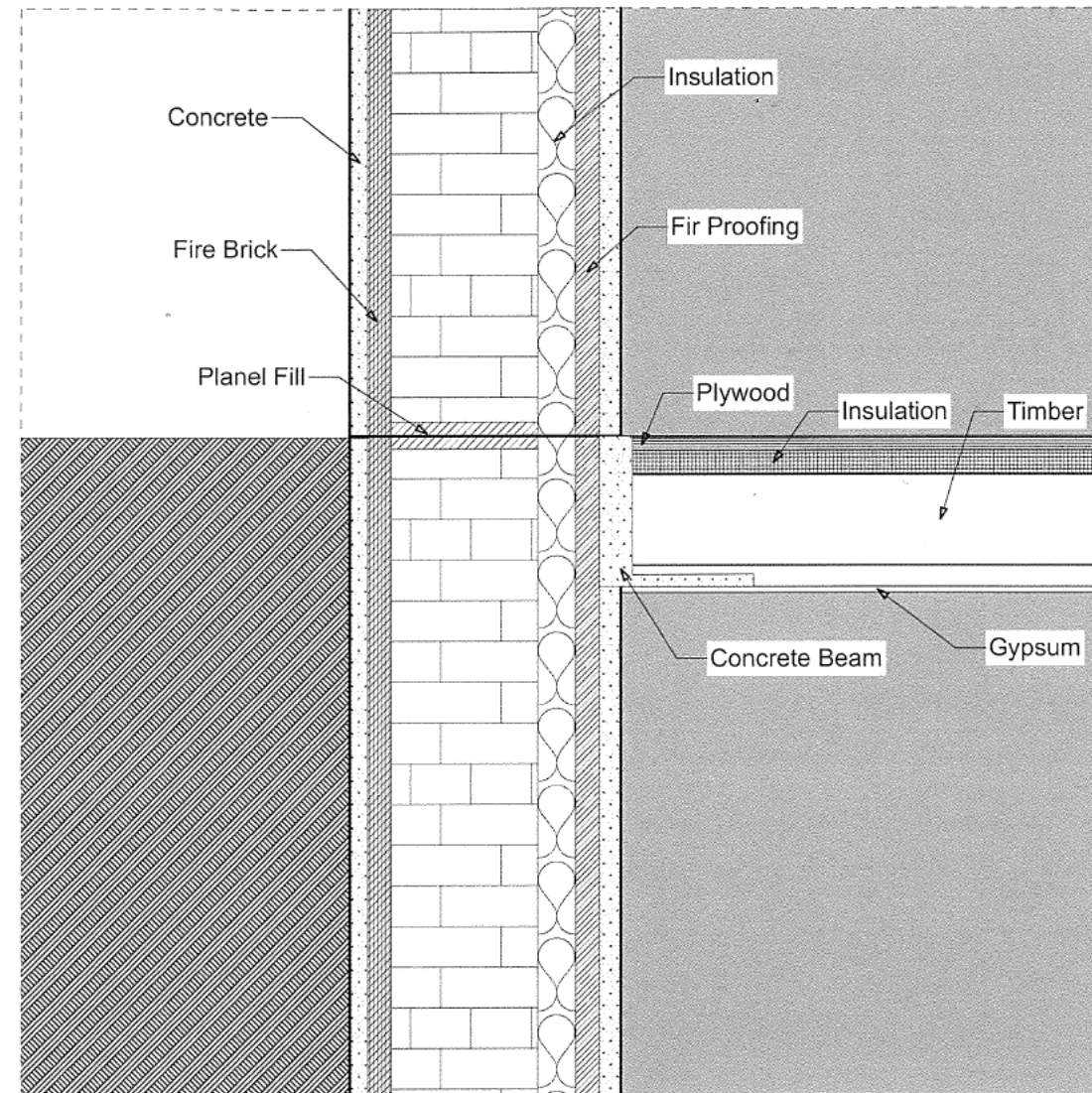
1 Cross Section AA 1:100



	2017- Cafe Planetarium Project	Student: Program: ArchiCAD	Drawing Title Formal Drawing - Cross Section 2	Scale 1:100	Drawing Number P10
--	---------------------------------------	-------------------------------	--	-----------------------	------------------------------

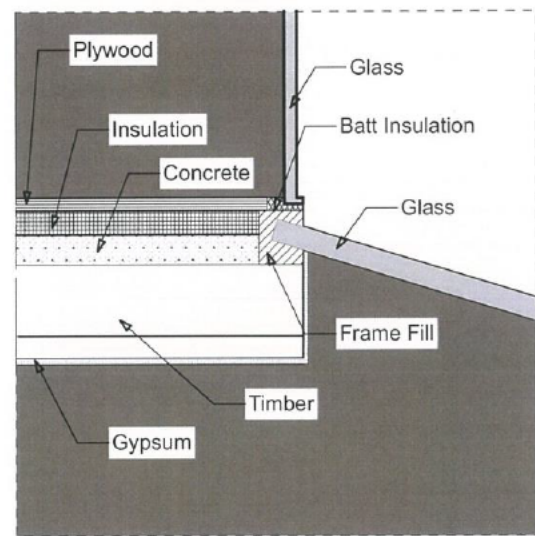


1 Detail 1 1:10

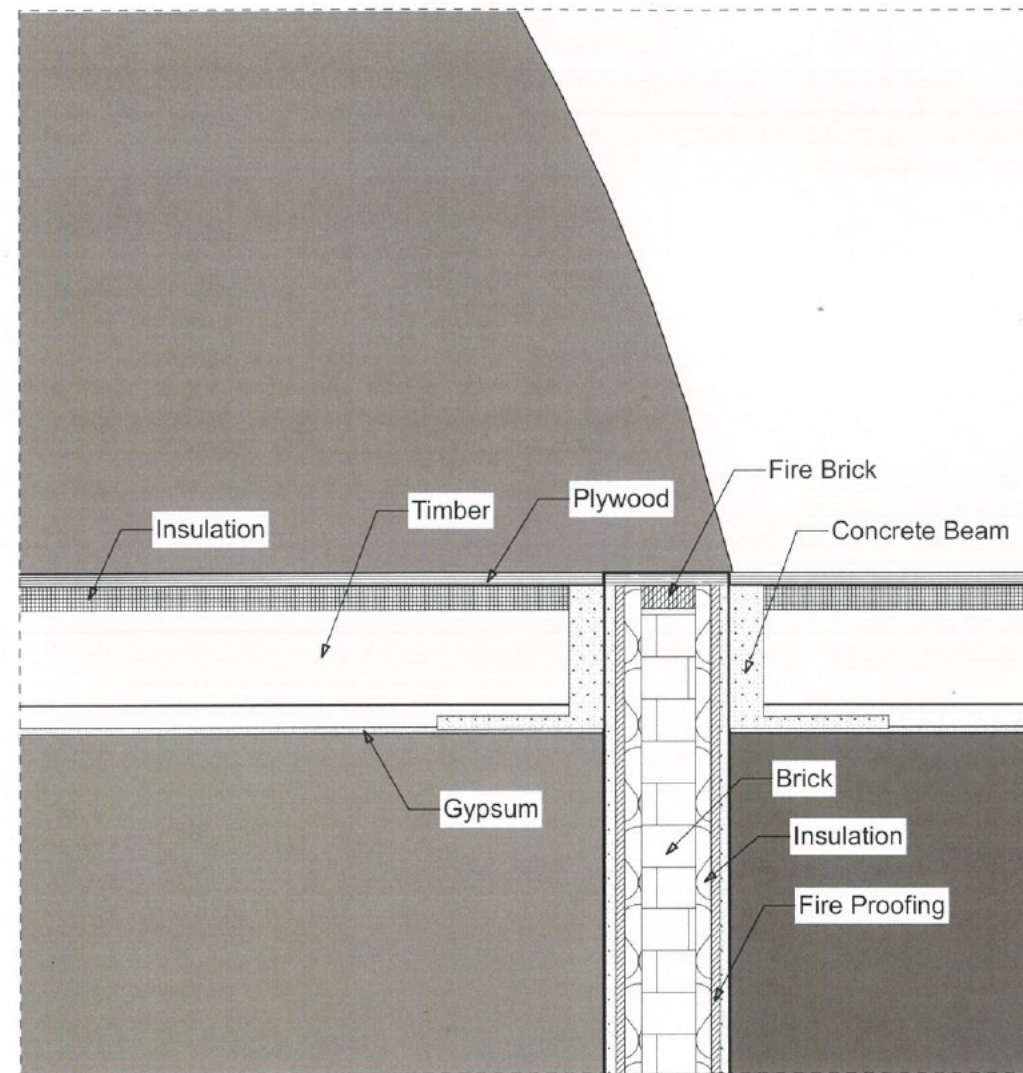


3 Detail 3 1:10

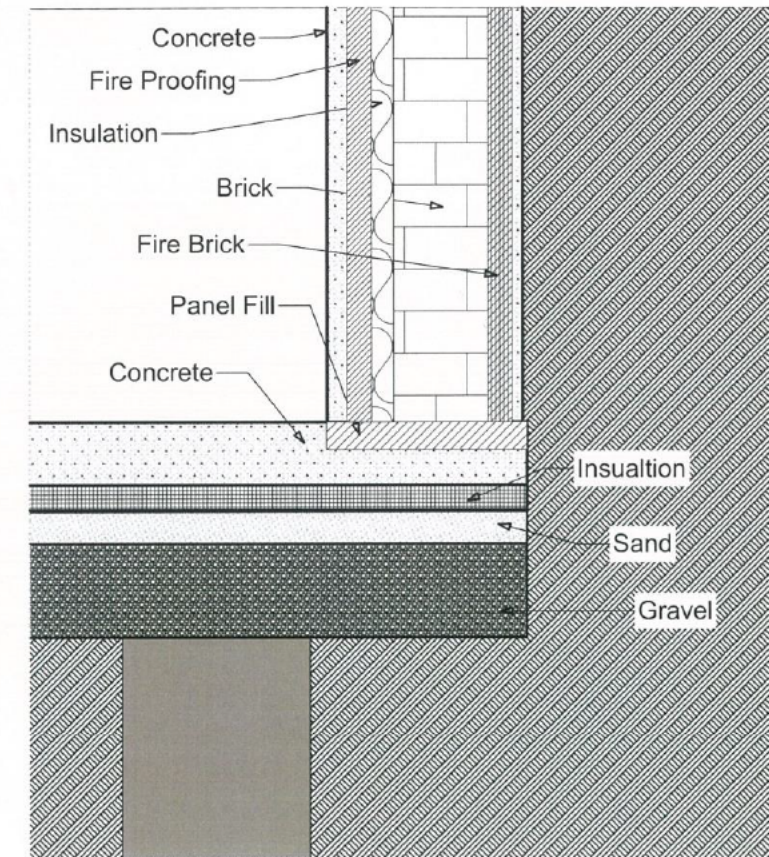
	2017- Cafe Planetarium Project	Student: Program: ArchiCAD	Drawing Title Formal Drawing - Detail	Scale 1:10	Drawing Number P11
--	---------------------------------------	-------------------------------	---	----------------------	------------------------------



2 Detail 2 1:10

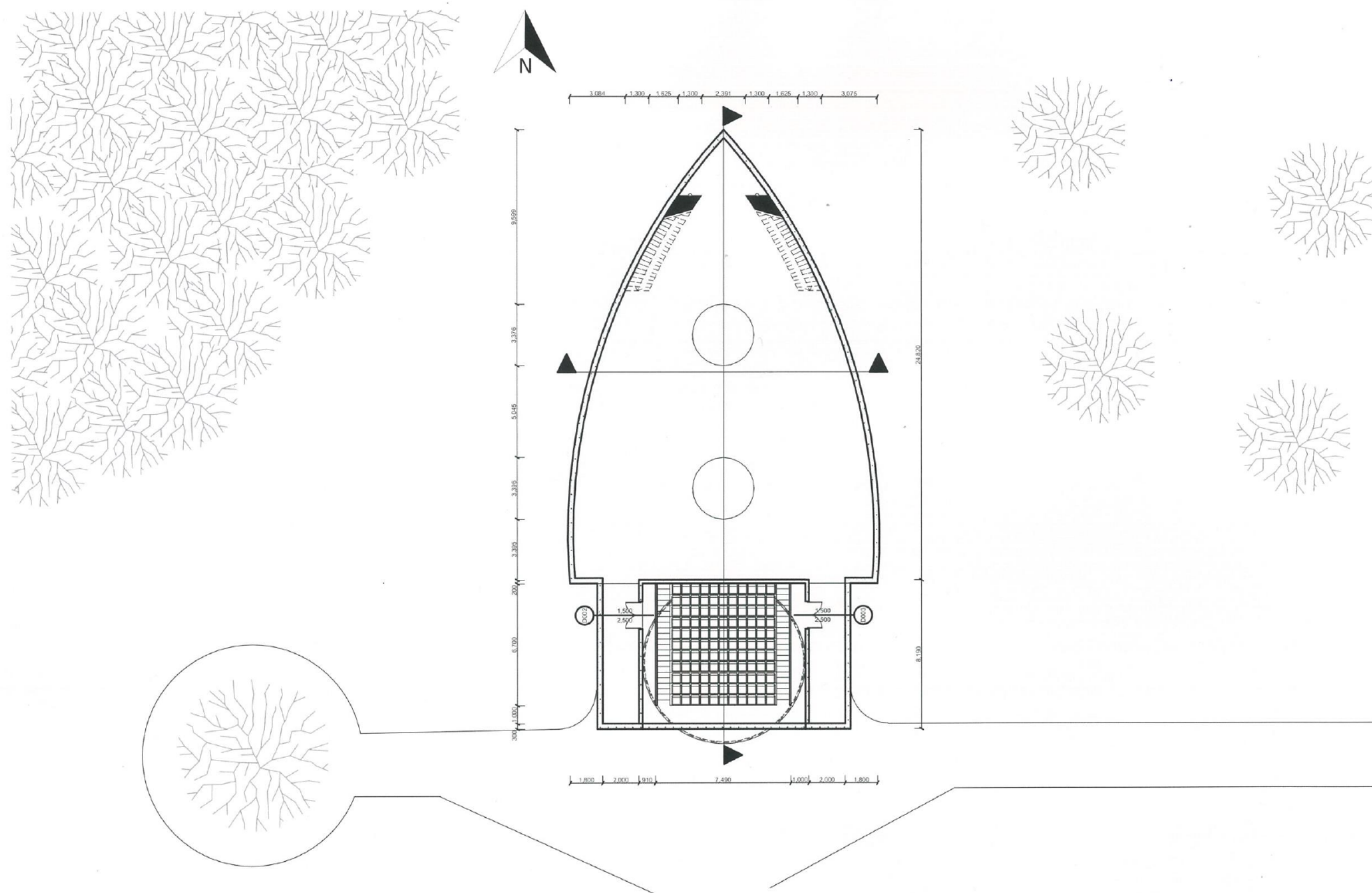


4 Detail 4 1:10



5 Detail 5 1:10

	2017- Cafe Planetarium Project	Student: Program: ArchiCAD	Drawing Title Formal Drawing - Details 2	Scale 1:10	Drawing Number P12
--	---------------------------------------	-------------------------------	--	----------------------	------------------------------



	2017- Cafe Planetarium Project	Student: Program: ArchiCAD	Drawing Title Formal Drawing - Site Plan	Scale 1:200	Drawing Number P8
--	---------------------------------------	-------------------------------	--	-----------------------	-----------------------------

AS 91631 (3.34): Produce working drawings to communicate production details for a complex design (6 credits)

Achievement	Achievement with Merit	Achievement with Excellence
Produce working drawings to communicate production details for a complex design.	Produce working drawings to clearly communicate production details for a complex design.	Produce working drawings to effectively communicate production details for a complex design.
<ul style="list-style-type: none"> Produce a <u>set of related instrumental</u> working drawings showing <u>exterior and interior detail</u> of components <u>related</u> to the construction and assembly of a <u>complex</u> design. Demonstrate an ability to use <u>drawing conventions and presentation techniques</u> to communicate details of a complex design. 	<ul style="list-style-type: none"> Produce a <u>precise</u> set of related instrumental working drawings showing exterior and interior detail of components that <u>explains</u> the construction and assembly of a complex design. Demonstrate an ability to <u>accurately apply</u> drawing conventions and presentation techniques to <u>clearly</u> communicate details of a complex design. 	<ul style="list-style-type: none"> Produce a precise and <u>cohesive</u> set of related instrumental working drawings through the appropriate selection of views and modes that enable the construction and/or assembly of a complex design. Demonstrate an ability to <u>accurately apply</u> drawing conventions and presentation techniques to clearly communicate production details of a complex design.

Commentary: This submission is assessed at Merit.

It shows a set of related complex plans for a Café Planetarium and has been produced using CAD.

This includes (meeting the grade given):

- CAD drawings showing precision and accuracy
- a series of pictorial illustrative views to help visualise the design
- floor plans showing some dimensioning with north point symbols, room space information and correct use of labelling
- a set of corresponding elevations matching the north point orientation indicated on the plan
- two sectional views which also match the orientation shown on the plan. Unfortunately the scale selected prohibited detailed information being displayed. Perhaps partial sections would have helped.
- the correct use of drawing conventions such as recognised scales, dimensioning and titling.
- call-out details as indicated on the cross section. However, the symbols used on the details did not show any constructional information other than labels i.e. the symbols used to not show correct connections or positions of components.

Even though this submission comprises a very complex design it did not meet the cohesive construction criterion.