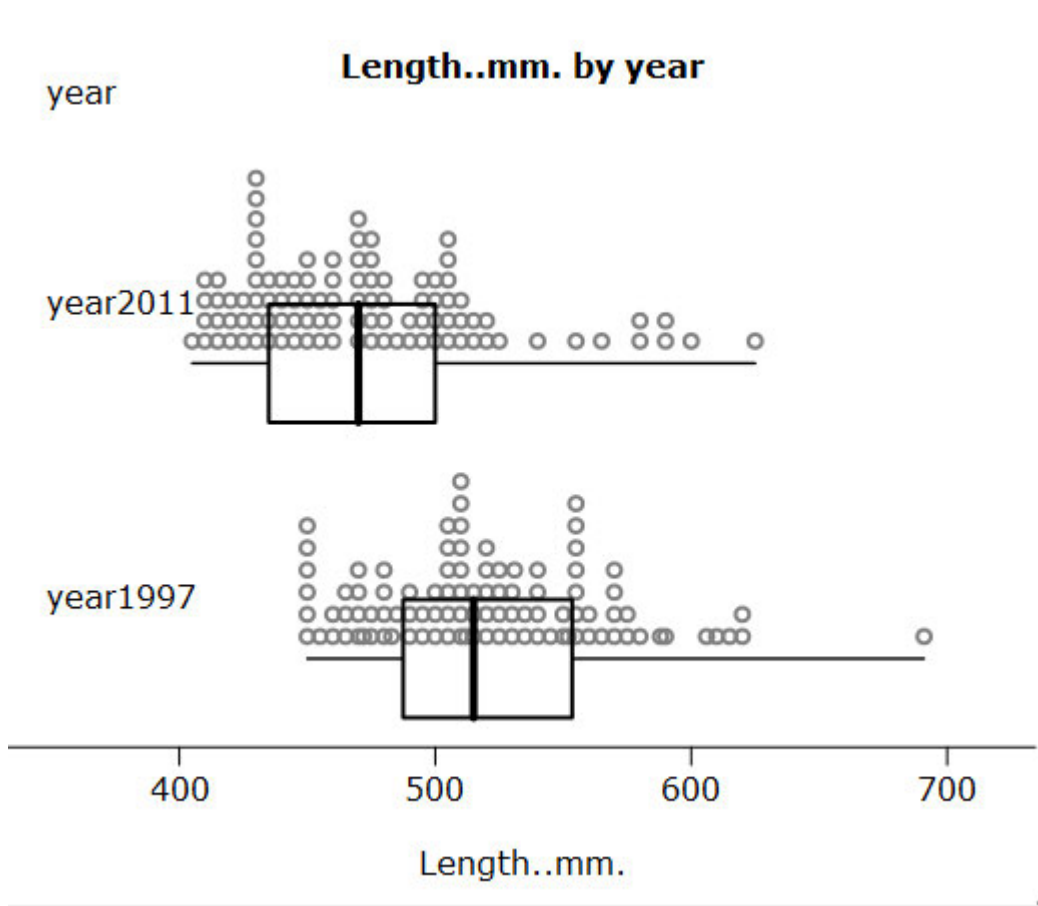


My dad says that the trout have got smaller in Lake Taupo. I wonder if this is correct? I wonder if trout in Lake Taupo tended to be larger in 1997 than 2011? I am going to look at a set of data I was given by my dad from 1997 and 2011

1



2

Trout are longer in 1997 than in 2011 because the median was 515mm and now it is 470mm. The mean also says this as it was 520.8mm in 1997 and 471.9mm in 2011

The longest trout in 1997 was 691mm and the longest in 2011 was 625mm.

This all tells me dad was right this time for once. Lake Taupo trout did tend to be longer in 1997 than in 2011.

4

| Summary of Length..mm. by year | | | | | | | | |
|--------------------------------|------|---------|--------|-------|---------|------|---------|-------------|
| | Min. | 1st Qu. | Median | Mean | 3rd Qu. | Max. | Std.dev | Sample.Size |
| year1997 | 450 | 487.5 | 515 | 520.8 | 553.5 | 691 | 45.780 | 99 |
| year2011 | 405 | 435.0 | 470 | 471.9 | 500.0 | 625 | 47.086 | 100 |

3