

No part of the candidate's evidence in this exemplar material may be presented in an external assessment for the purpose of gaining an NZQA qualification or award.



Mana Tohu Mātauranga o Aotearoa
New Zealand Qualifications Authority

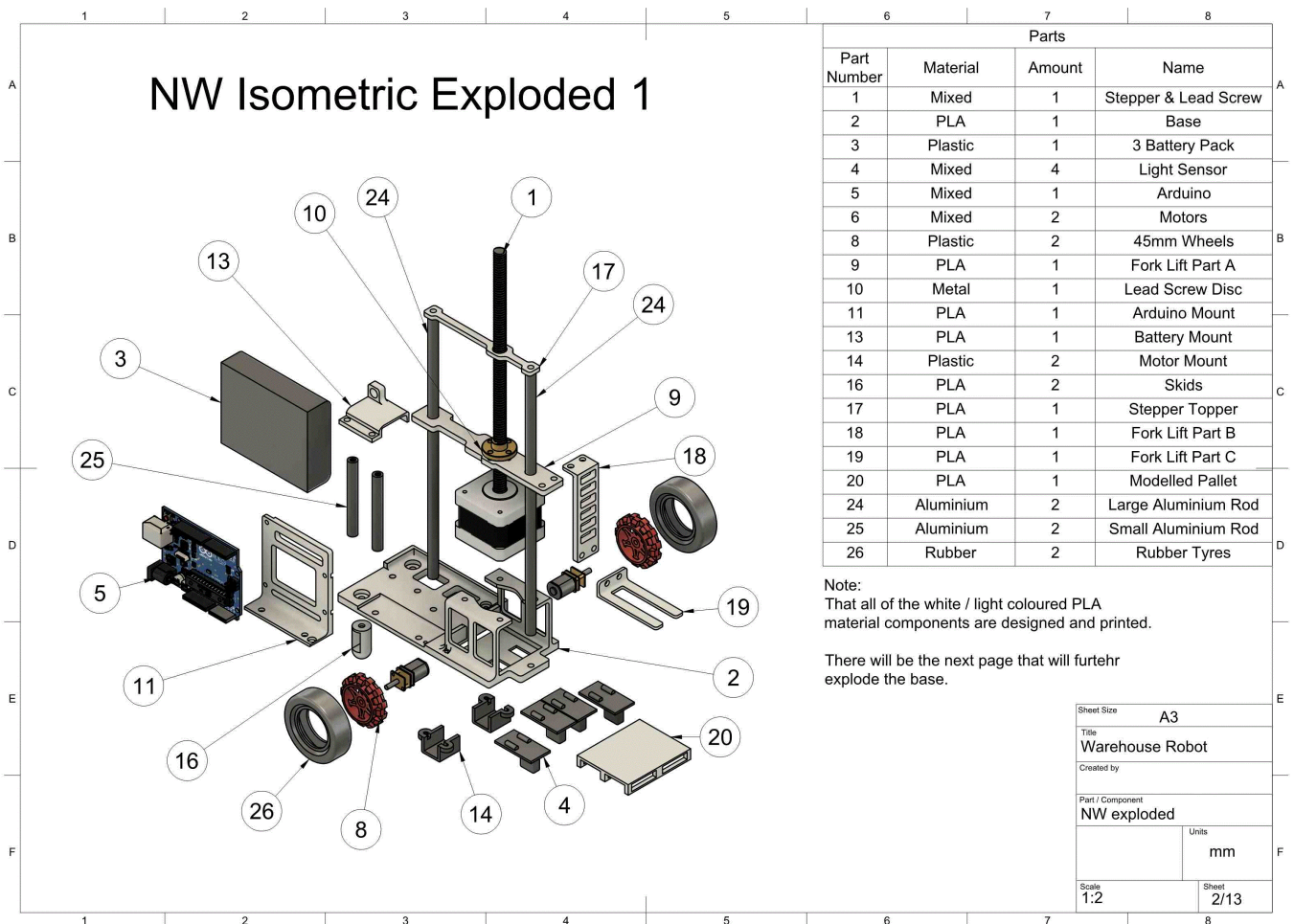
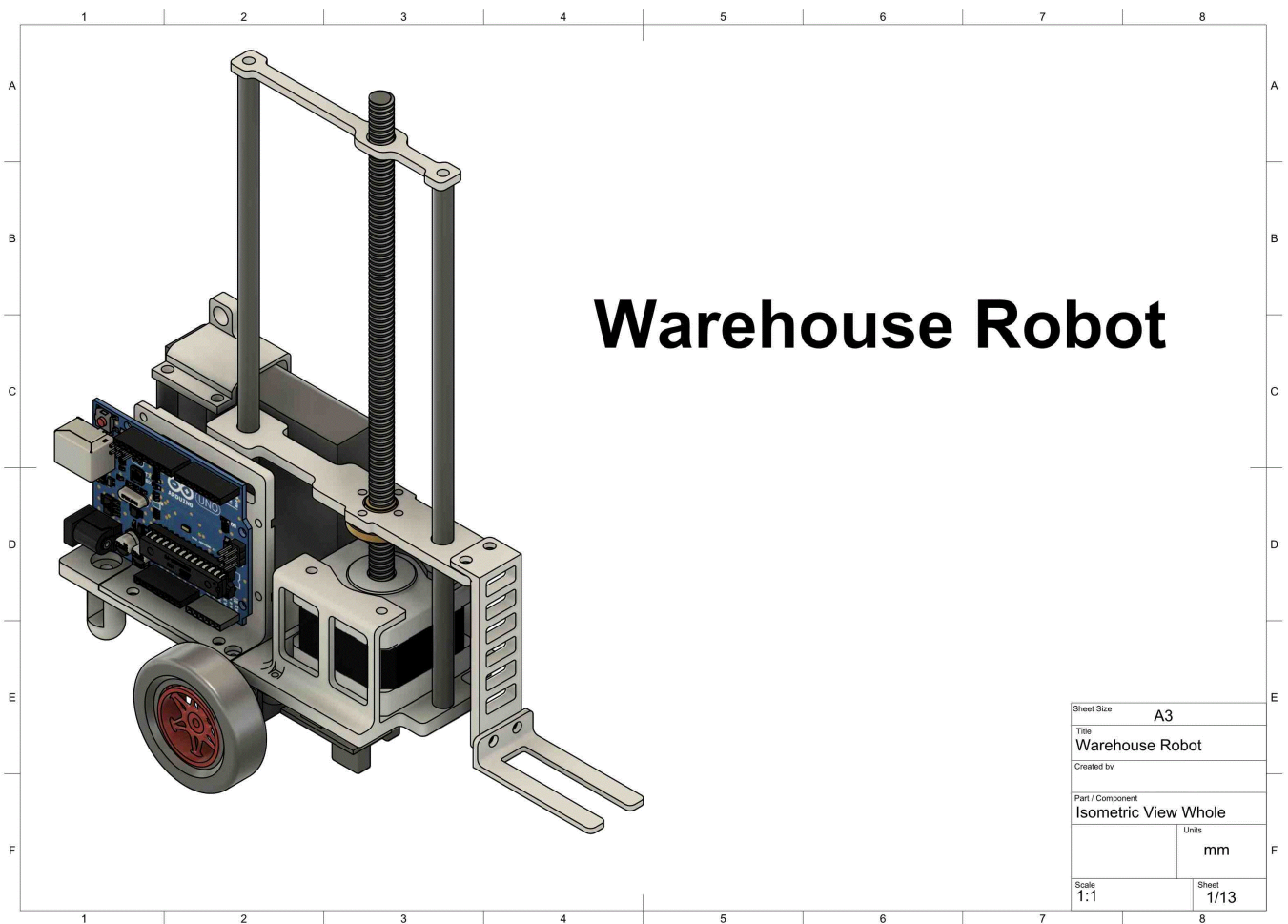
Level 3 Design and Visual Communication 2023

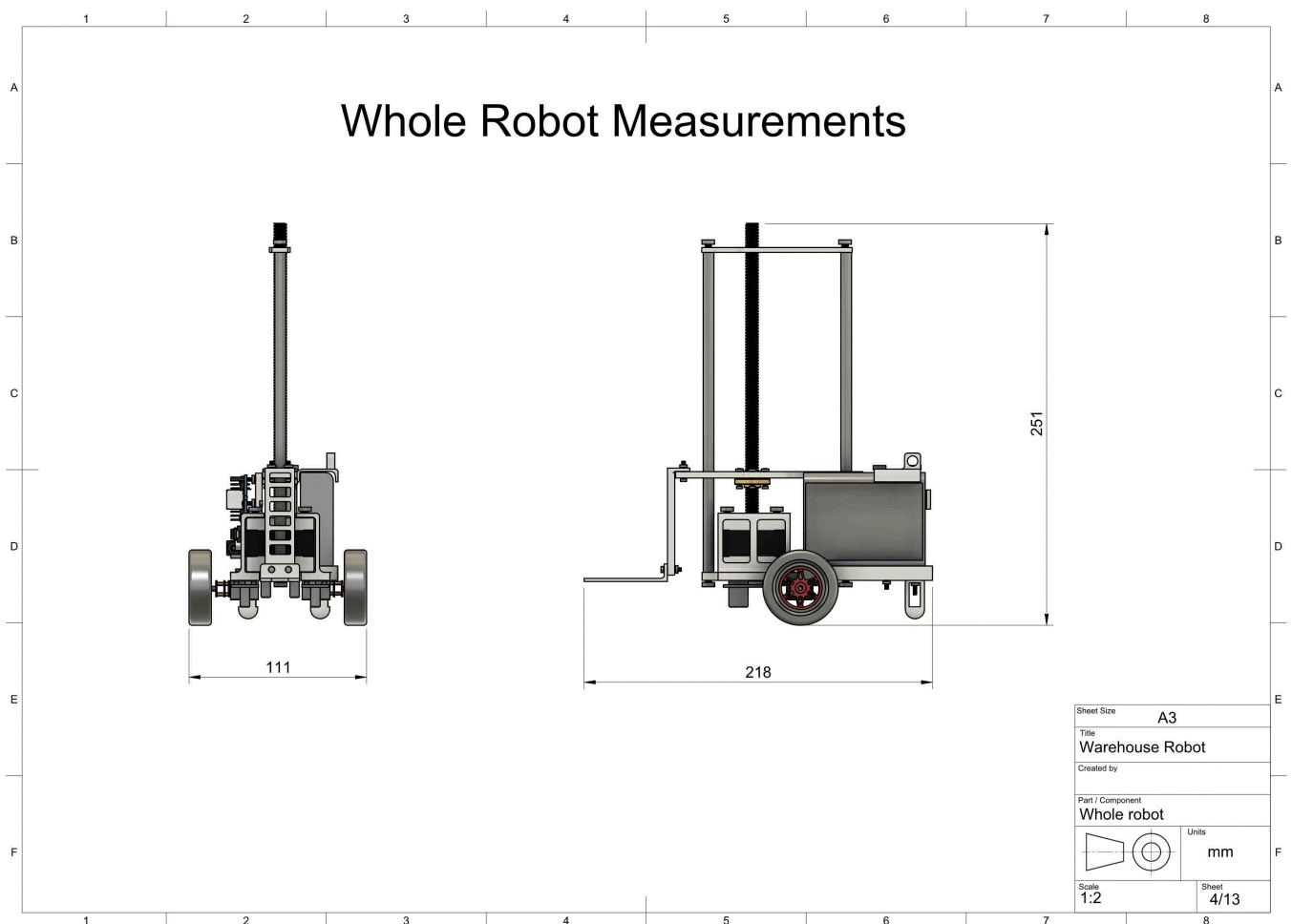
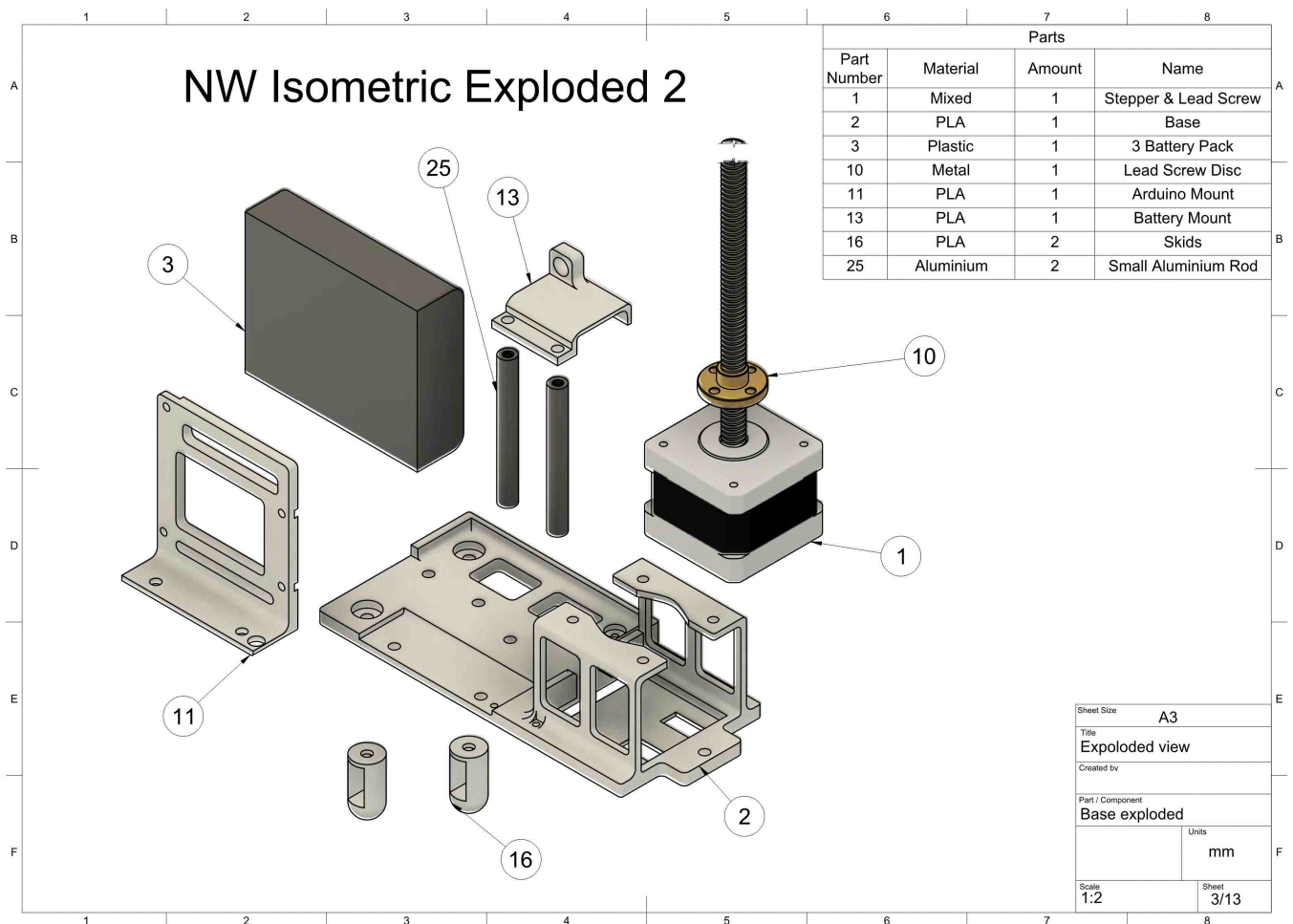
**91631 Produce working drawings to communicate
production details for a complex design**

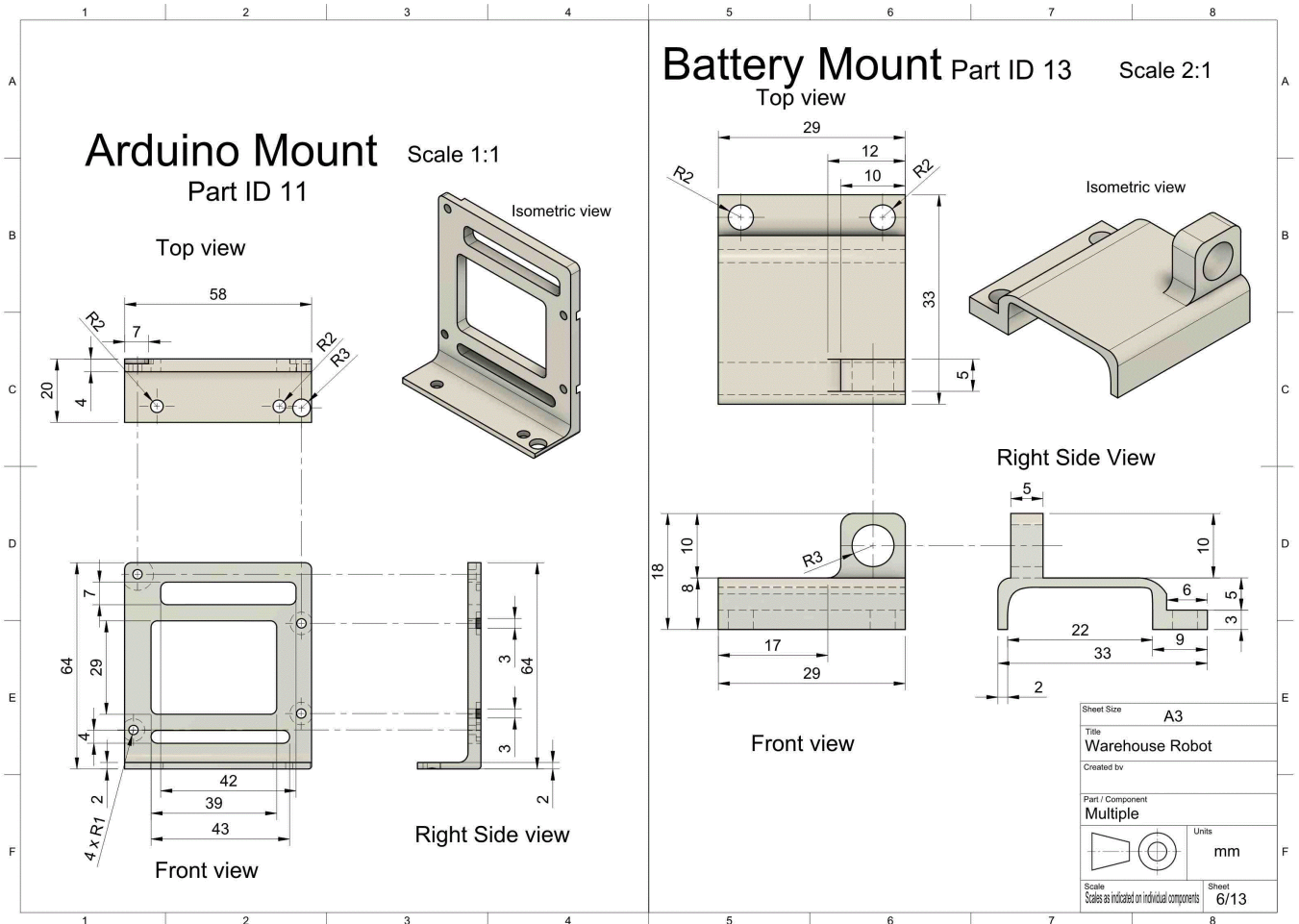
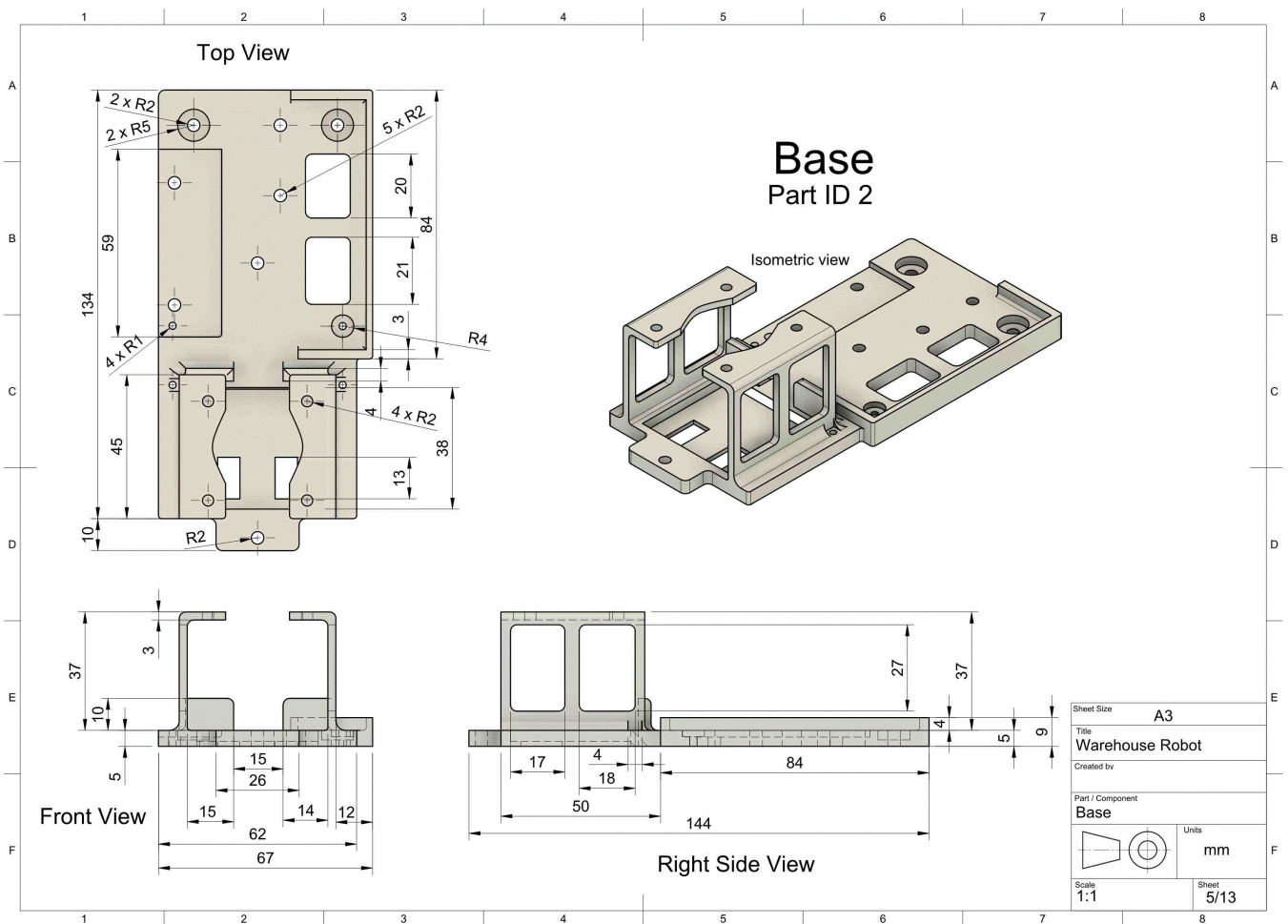
EXEMPLAR

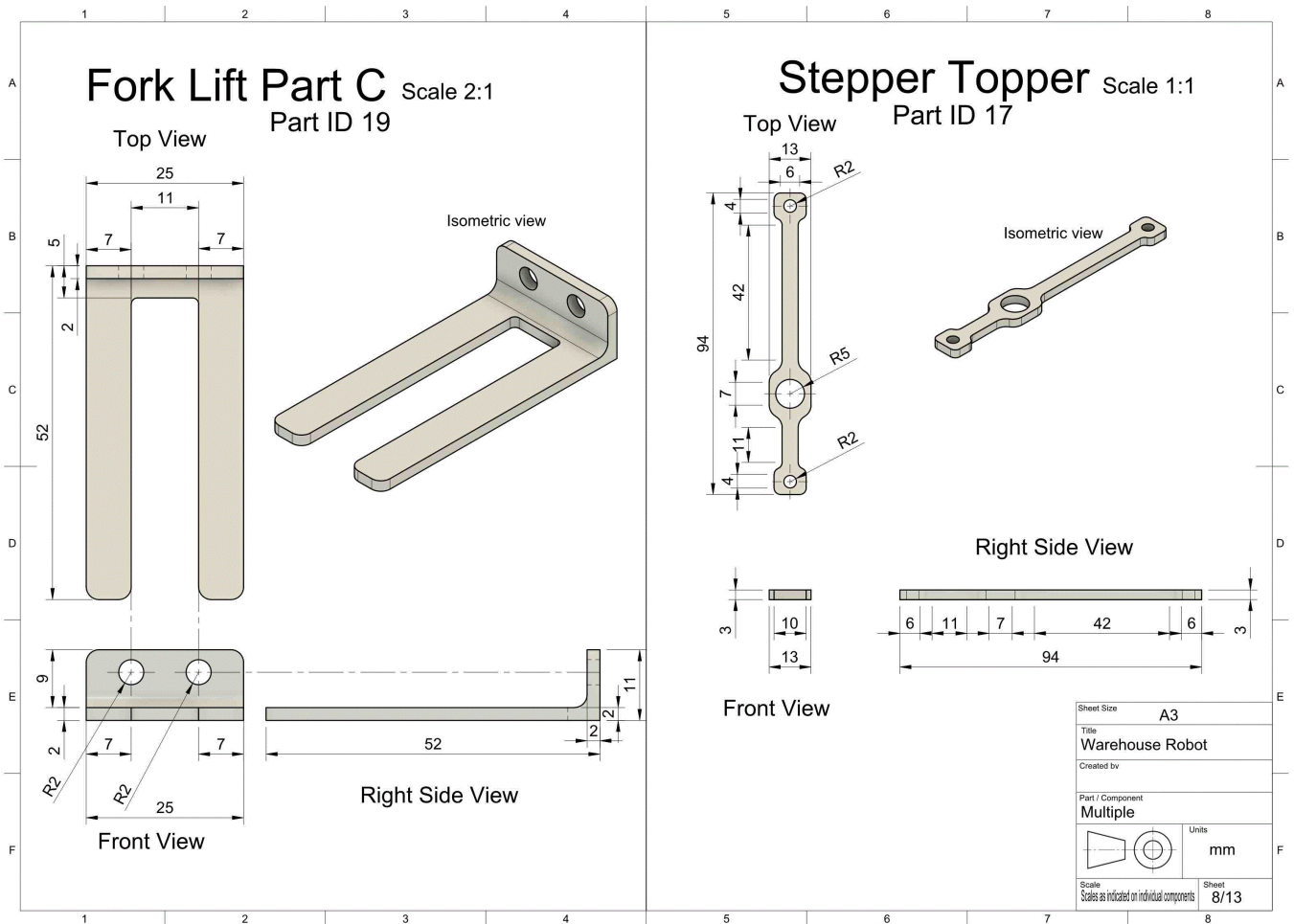
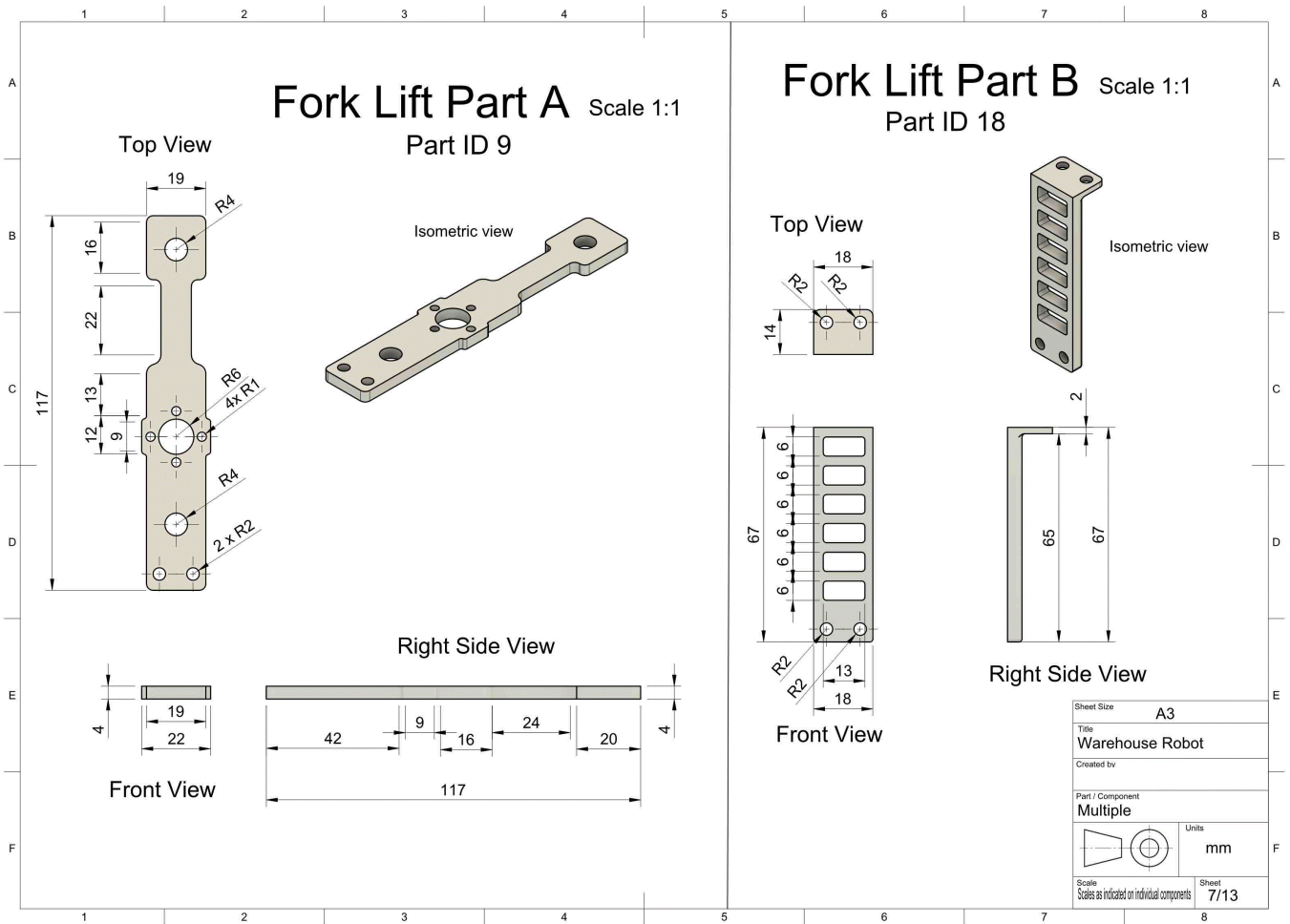
Excellence

TOTAL E

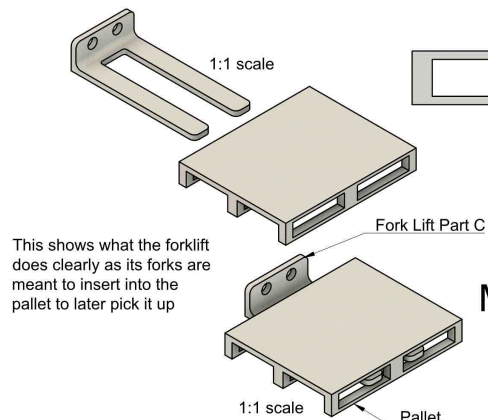
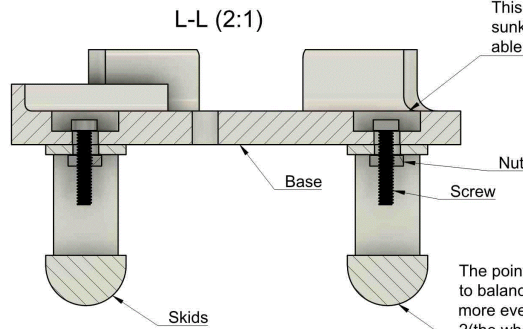
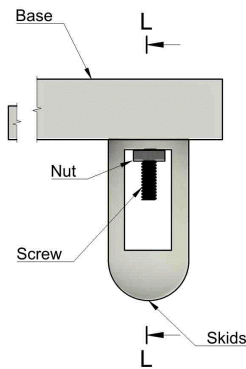




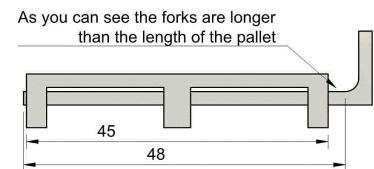
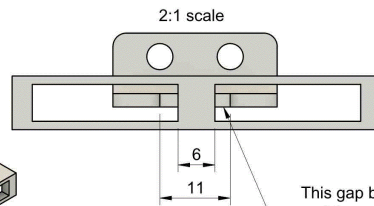




Skids Mount Assembly scale 2:1 Part ID's 2,16

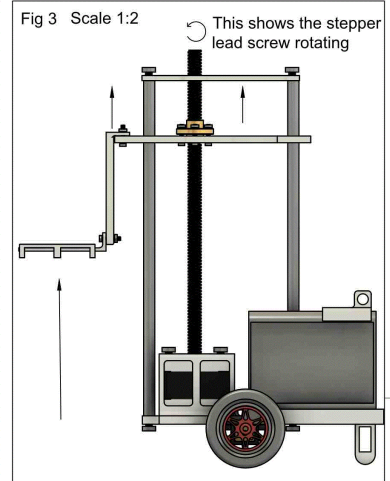
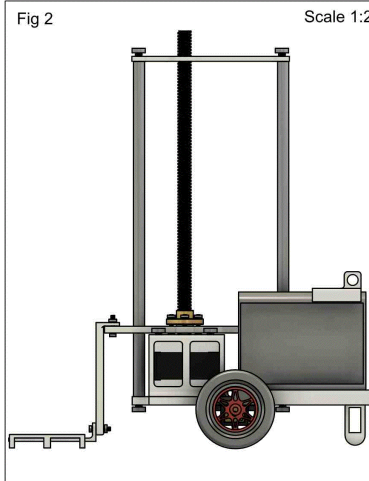
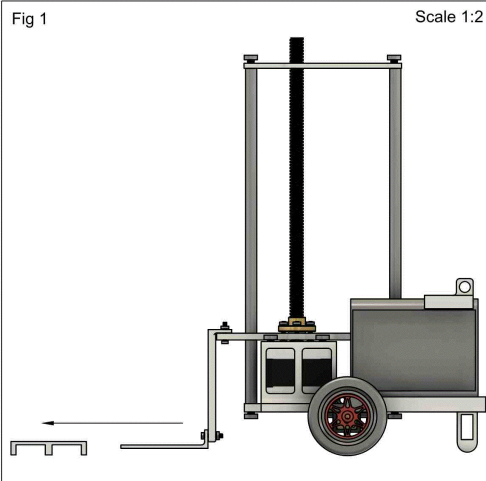


Modelled Pallet and Fork lift Part C interaction Part ID's 19,20



Sheet Size	A3
Title	Warehouse Robot
Created by:	
Part / Component	Connection between components
Units	mm
Scale	Scales as indicated on individual components
Sheet	11/13

How the Robot Prototype Functions



The figure above shows the upward movement of the stepper disc and the forklift taking along with it the pallet as the inserts forks are meant to act as a means to move the pallet and the package that could be placed a top it.

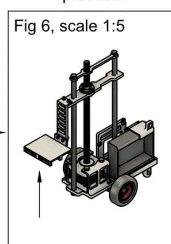
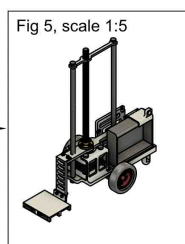
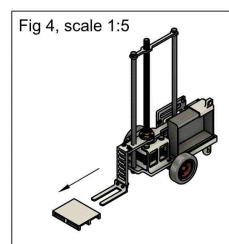


Figure 4,5,6 are shown to show a NE isometric view of this same process in a smaller view and scale of 1:5.

Sheet Size	A3
Title	Warehouse Robot
Created by:	
Part / Component	Prototype functionality
Units	mm
Scale	Scales as indicated on individual components
Sheet	13/13

Excellence

Subject: Design and Visual Communication

Standard: 91631

Marker commentary
<p>This submission is assessed at Excellence.</p> <p>It shows a set of related complex drawings of a warehouse robot and has been produced using CAD.</p> <p>This includes (meeting grade given):</p> <ul style="list-style-type: none">• illustrative assembled and exploded pictorial views to help visualise the design and explain constructional and function details• drawings showing precision and accuracy• extensive dimensioning of overall robot and components• a set of individual drawings cross referenced against the exploded views• well selected and informative sectional views and detailing i.e. enlarged views were used to help explain features• good use of call-out details to show constructional detail and functions• the correct use of drawing conventions such as recognised scales, dimensioning, and symbols• correct use of all page, labelling and drawing referencing.