

91286



912860



NEW ZEALAND QUALIFICATIONS AUTHORITY  
MANA TOHU MĀTAURANGA O AOTEAROA

QUALIFY FOR THE FUTURE WORLD  
KIA NOHO TAKATŪ KI TŌ ĀMUA AO!

2

SUPERVISOR'S USE ONLY

Tick this box if you  
have NOT written  
in this booklet

☐

## Level 2 Te Reo Māori 2022

91286 Pānui kia mōhio ki te reo o te ao torotoro

Credits: Six

Paetae	Kaiaka	Kairangi
Pānui kia mōhio ki te reo o te ao torotoro.	Pānui kia mārama ki te reo o te ao torotoro.	Pānui kia mātau ki te reo o te ao torotoro.

Check that the National Student Number (NSN) on your admission slip is the same as the number at the top of this page.

**You should attempt ALL the questions in this booklet.**

Answer in your choice of te reo Māori or English. If you need more room for any answer, use the extra space provided at the back of this booklet.

Check that this booklet has pages 2–12 in the correct order and that none of these pages is blank.

Do not write in any cross-hatched area (X). This area may be cut off when the booklet is marked.

**YOU MUST HAND THIS BOOKLET TO THE SUPERVISOR AT THE END OF THE EXAMINATION.**

## PĀTAI TUATAHI / QUESTION ONE

Pānuihia mai te Īmēra ki te kapa haka, ā, hei taunaki i ō whakaaro, tīpakohia ngā kōrero kei te tuhinga hei whakautu i te Pātai Tuatahi.

*Read the email to the kapa haka group, and refer to it in your answer to Question One.*

### Kuputaka / Glossed vocabulary

whakaharatau	practise / practice
paramanawa	morning / afternoon tea
whakapaipai	to tidy up

### Noho Marae o te Rōpū Kapa Haka

**Kaupapa:** He pānui mō te noho marae

**Nā:** Te Kaiako o Ngā Manu Tīori <piripi@kapa.ac.nz>

**Ki:** Te Rōpū Kapa Haka o Ngā Manu Tīori <nmt@kapa.ac.nz>

Tēnā koutou e te whānau whānui,

Mōhio pai ana koutou ka tū te noho marae tuatahi o te tau ā te mutunga wiki e heke mai nei, hei whakarite i te rōpū mō Te Whakataetae Kapa Haka ā-Rohe. Pānuihia tēnei Īmēra kia mōhio ai koutou he aha ngā whakaritenga mō tō tātou noho marae.

### Ngā whakaritenga

**Ā hea:** Ko te Pōmere te 7 o Kohitātea (hei te 5 karaka i te pō) ki te Rātapu te 9 o Kohitātea (hei te 3 karaka i te ahiahi)

**Kei hea:** Te Marae o Te Whānau Kotahi

**Te utu:** \$150

Mauria mai e koutou:

- He pera
- He paraikete
- He tāora
- He kākahu pai mō te nekeneke
- He koha: He keke, he pihikete, he moni rānei.

### Anei te mahere mō ngā rā

#### Te Pōmere te 7 o Kohitātea

Ka tū te pōwhiri hei te rima karaka i te pō, kātahi, ka kai tātou. Hei te whitu karaka, ka tīmata tātou ki te ako i te waiata-ā-ringa. Mēnā ka ako pai koutou i te waiata-ā-ringa, ka whakatā hei te waru karaka. He āhua uaua te haka, nō reira kotahi hāora me te hāwhe te roanga o te whakaharatau haka (hei te haurua mai i te waru karaka ki te tekau karaka). Kātahi, ka moe tātou.



Lined writing area with horizontal lines.

**This page has been deliberately left blank.  
The examination continues on the following page.**

## PĀTAI TUARUA/ QUESTION TWO

Pānuihia mai te rangitaki a Hine, ā, hei taunaki i ō whakaaro, tīpakohia ngā kōrero kei te tuhinga hei whakautu i te Pātai Tuarua.

*Read Hine's blog, and refer to it in your answer to Question Two.*

### Kuputaka/ Glossed vocabulary

rangitaki	blog
hīkaka	eager/keen
whakakorengia	put off/cancelled
maumahara	to remember

### www.hine.rangitaki.com



Kia ora, e hoa mā! Nau mai, hoki mai ki taku rangitaki kapa haka! Kāore i tua atu i te kapa haka.

Ko te kaupapa o tēnei rā, ko Te Whakataetae Kapa Haka ā-Rohe! Kei Tāmaki Makaurau ahau mō ngā rā e toru e heke mai nei, hei

whakanui i te kapa haka. Hīkaka katoa mātou o te ao haka nō te mea i whakakorengia te whakataetae i tērā tau nā te Mate Kowheori-19.

Ia rua tau, tū ai te whakataetae ki wāhi kē o te rohe hei whakanui i tēnei kaupapa. I maumahara ahau ki te whakataetae o te tau rua mano tekau mā waru. He mīharo ngā rōpū me te kounga o te kapa haka, te reo Māori hoki, engari he makariri rawa, he roa hoki ngā rā.

I tēnei tau, ka tū Te Whakataetae Kapa Haka ā-Rohe ki Ngā Ana Wai (arā ko Eden Park). Kua hokona e ahau tētahi poraka (waru tekau tara te utu), me tētahi heru ātaahua (whā tekau tara te utu). Kāore e kore, he reka ngā kai. Kua kainga e ahau tētahi hāngī. Mauria mai āu moni mēnā ka haere mai koutou, nō te mea, he maha ngā kai me ngā taonga rawe!

Kua tū te kapa haka 'Ka Mau Te Wehi' i runga i te atamira i tēnei ata. He tino hōhonu te kaupapa o te rōpū, ko te hauora Māori te kaupapa matua o tēnei rōpū. Ko ngā wāhanga rawe ki ahau, ko te whakaeke me te haka. Kua rangona te ihi me te wehi kei waenganui i a rātou.

Nō reira, e hoa mā, mēnā e wātea ana koutou i tēnei mutunga wiki, haere mai ki Ngā Ana Wai, ki te pito o Tāmaki Makaurau hei whakanui i a Tānerore rāua ko Hine Te Rēhia.

Image source: <https://hail.to/bishopdale-school/publication/PG2P4U4/article/Ug6RsZp1>

*Describe Hine's experiences at the Regional Kapa Haka competitions she has attended. What are the benefits and downsides of attending the event for Hine?*

## PĀTAI TUATORU / QUESTION THREE

Pānuihia mai te uiuinga, ā, hei taunaki i ō whakaaro, tīpakohia ngā kōrero kei ngā tuhinga nei hei whakautu i te Pātai Tuatoru.

*Read the interview, and refer to it in your answer to Question Three.*

### Kuputaka / Glossed vocabulary

atamira	stage
maumahara	to remember
kounga	quality / standard
horohoroi	to have a shower

### He uiuinga

E aku nui, e aku rahi. Nau mai ki te reo irirangi o Ngākau nui. Kei Tāmaki Makaurau ahau mō Te Whakataetae Kapa Haka ā-Rohe. Kei konei a Mikaere, te kaitātaki tāne o te kapa, Ka Mau Te Wehi! Kei te pēhea koe, Mikaere?



Tēnā koe, Mārama. Kua pau te hau. Inā tata nei, i tū mātou kō tōku kapa, Ka Mau Te Wehi, i runga i te atamira.



Koia kei a koe, Mikaere! I pēhea tō wheako hei kaihaka i tēnei tau?



Kua roa te haerenga ki te whakarite i a mātou anō kia tū i tēnei tau. Engari ahakoa ngā piki me ngā heke, he taonga te mahi i tēnei mahi.



I rangona e ahau te mōteatea e pā ana ki tō tupuna. Nā wai i tito te waiata rā?







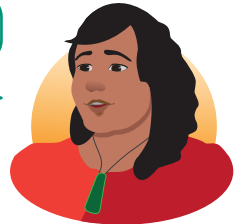
Ngā mihi, Mārama. Nā ō mātou kaiako i tito. He taonga te waiata nō te mea, he tohu maumahara mō tō mātou tupuna. He uaua ki ahau te ako i ngā kupu katoa o tēnei mōteatea.

Mauri ora! Ko tēnei tō tau tuatahi hei kaihaka i Te Whakataetae Kapa Haka ā-Rohe?



Kāo. Kua tū ahau hei kaihaka mō ngā whakataetae e toru. Ahahoa e ako tonu ana ahau. Hei tērā whakataetae e pīrangi ahau ki te tito i tētahi waiata mō tō mātou kapa.

Mīharo kua kitea e koe ētahi atu rōpū?



Āe, he tino pai te kounga o ngā kapa i tēnei tau. Engari hikaka katoa ahau ki te mātaki i te rōpū, Ngā Wawata.

Ko tāua, tāua, e hoa. Kua tū koe, nō reira ka aha koe i tēnei ahiahi?



I te tuatahi, ka horohoroi, kātahi ka kai ahau. Hei te pō nei, ka haere mātou ko tōku kapa ki tētahi pāti.

Please turn the page ➤

*In your opinion, is Mikaere an experienced performer? Provide evidence from the interview to support your answer.*



Extra space if required.  
Write the question number(s) if applicable.

QUESTION  
NUMBER

91286