

1

90929M



909295



NEW ZEALAND QUALIFICATIONS AUTHORITY
MANA TOHU MĀTAURANGA O AOTEAROA

SUPERVISOR'S USE ONLY

Koiora, Kaupae 1, 2014

90929M Te whakaatu māramatanga ki ngā ariā koiora e pā ana ki te whāngote hei kaikame

2.00 i te ahiahi Rāhina 17 Whiringa-ā-rangi 2014
Whiwhinga: Toru

Paetae	Kaiaka	Kairangi
Te whakaatu māramatanga ki ngā ariā koiora e pā ana ki te whāngote hei kaikame.	Te whakaatu māramatanga hōhonu ki ngā ariā koiora e pā ana ki te whāngote hei kaikame.	Te whakaatu māramatanga matawhānui ki ngā ariā koiora e pā ana ki te whāngote hei kaikame.

Tirohia mehemea e ōrite ana te Tau Ākongā ā-Motu (NSN) kei tō pepa whakauru ki te tau kei runga ake nei.

Me whakautu e koe ngā pātai KATOĀ kei roto i te pukapuka nei.

Ki te hiahia koe ki ētahi atu wāhi hei tuhituhi whakautu, whakamahia te (ngā) whārangi kei muri i te pukapuka nei, ka āta tohu ai i ngā tau pātai.

Tirohia mehemea kei roto nei ngā whārangi 2–19 e raupapa tika ana, ā, kāore hoki he whārangi wātea.

HOATU TE PUKAPUKA NEI KI TE KAIWHAKAHAERE HEI TE MUTUNGA O TE WHAKAMĀTAUTAU.

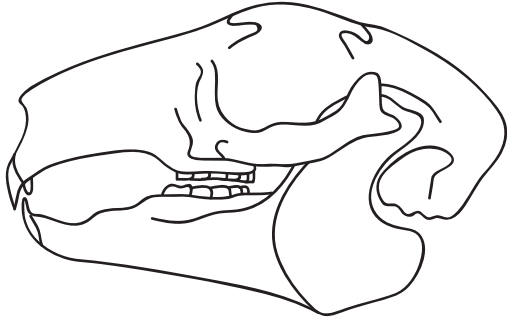
TAPEKE



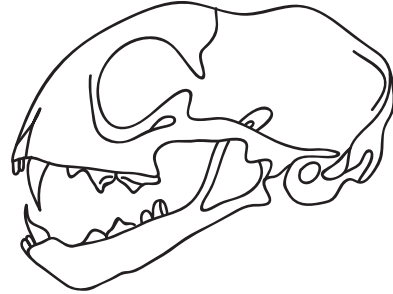
MĀ TE KAIMĀKA ANAKE

PĀTAI TUATAHI: TE NAKUNAKU¹ ŌKIKO

Mō te hipa o te kai mai i te waha ki te puku, he maha ngā tukanga ka mahi. Ko tētahi o ēnei tukanga ko te **nakunaku ōkiko**, e wāwāhi haerehia ai ngā korakora kai e ngā niho. E whakaatu ana ngā hoahoa e rua i raro i ngā angaanga² o tētahi kaiota me tētahi kaikiko. He rerekē ngā niho o ngā whāngote **kaiota** i ō ngā **kaikiko** i te mea he rerekē ā rātou momo kai.



Angaanga A



Angaanga B

Mātāpuna (he mea urutau): H. Poletti rāua ko R. McGowan, *Year 11 Biology, NCEA Level 1: Achievement Standard Biology 1.5 Demonstrating understanding of biological ideas relating to a mammal as a consumer* (Kirikiriroa: ABA Books Ltd, 2011), wh. 19.

- (a) Tautohua ko tēhea te angaanga o te kaiota, ā, ko tēhea te angaanga o te kaikiko.

Tuhia he pūtake mō ō kōwhiringa.

Angaanga A: _____

Pūtake: _____

Angaanga B: _____

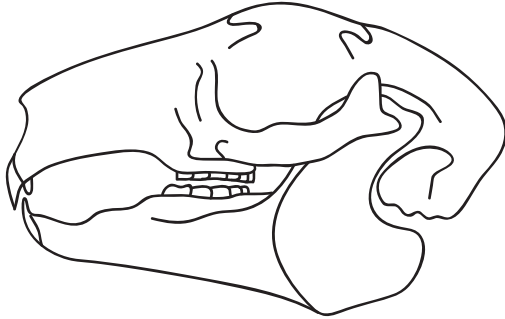
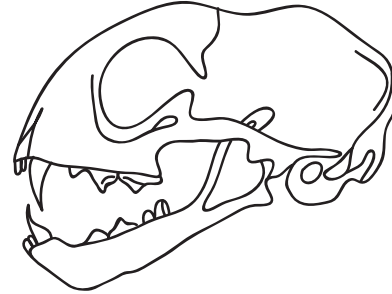
Pūtake: _____

¹ kūnatutanga

² pārihirihi

QUESTION ONE: PHYSICAL DIGESTION

For food to pass from the mouth to the stomach, several processes need to occur. One of these processes is **physical digestion**, where food particles are mechanically broken down by the teeth. The two diagrams below show skulls of a herbivore and a carnivore. The teeth of **herbivore** and **carnivore** mammals are different because they eat different types of food.

**Skull A****Skull B**

Source (adapted): P. Poletti & R. McGowan, *Year 11 Biology, NCEA Level 1: Achievement Standard Biology 1.5 Demonstrating understanding of biological ideas relating to a mammal as a consumer* (Hamilton: ABA Books Ltd, 2011), p 19.

- (a) Identify which skull belongs to a herbivore, and which skull belongs to a carnivore. Give reasons for your choices.

Skull A: _____

Reason: _____

Skull B: _____

Reason: _____

English translation of the wording on the front cover

Level 1 Biology, 2014

90929 Demonstrate understanding of biological ideas relating to a mammal(s) as a consumer(s)

2.00 pm Monday 17 November 2014

Credits: Three

Achievement	Achievement with Merit	Achievement with Excellence
Demonstrate understanding of biological ideas relating to a mammal(s) as a consumer(s).	Demonstrate in-depth understanding of biological ideas relating to a mammal(s) as a consumer(s).	Demonstrate comprehensive understanding of biological ideas relating to a mammal(s) as a consumer(s).

90929M

Check that the National Student Number (NSN) on your admission slip is the same as the number at the top of this page.

You should attempt ALL the questions in this booklet.

If you need more space for any answer, use the page(s) provided at the back of this booklet and clearly number the question.

Check that this booklet has pages 2–19 in the correct order and that none of these pages is blank.

YOU MUST HAND THIS BOOKLET TO THE SUPERVISOR AT THE END OF THE EXAMINATION.