

1

91008



910080



NEW ZEALAND QUALIFICATIONS AUTHORITY
MANA TOHU MĀTAURANGA O AOTEAROA

QUALIFY FOR THE FUTURE WORLD
KIA NOHO TAKATŪ KI TŌ ĀMUA AO!

SUPERVISOR'S USE ONLY

Level 1 Geography, 2015

91008 Demonstrate geographic understanding of population concepts

9.30 a.m. Thursday 12 November 2015
Credits: Four

Achievement	Achievement with Merit	Achievement with Excellence
Demonstrate geographic understanding of population concepts.	Demonstrate in-depth geographic understanding of population concepts.	Demonstrate comprehensive geographic understanding of population concepts.

Check that the National Student Number (NSN) on your admission slip is the same as the number at the top of this page.

You should attempt ALL the questions in this booklet.

If you need more room for any answer, use the extra space provided at the back of this booklet.

Check that this booklet has pages 2–12 in the correct order and that none of these pages is blank.

YOU MUST HAND THIS BOOKLET TO THE SUPERVISOR AT THE END OF THE EXAMINATION.

TOTAL

ASSESSOR'S USE ONLY

INSTRUCTIONS

In the box below, name a **region, country (or countries)** that you will use for your population case study.

Name of **region, country (or countries) population** case study:

You should provide detailed case study material from this region, country (or countries) when answering ALL of the questions in this booklet.

QUESTION ONE: Population Distribution

Read the geographic concept below and refer to it when answering this question.

Geographic Concept

Patterns are a distinctive arrangement of things or objects. Geography studies spatial patterns (the arrangement of features on the earth's surface), and temporal patterns (how characteristics, trends, and features change over time).

Distribution of World Population by Country

Equator

For copyright reasons, this resource cannot be reproduced here.

Source (adapted): http://en.wikipedia.org/wiki/File:World_population.svg#mediaviewer/File:World_population.svg

Study the map of world population distribution on page 2, and refer to it when answering (a).

- (a) Describe the distribution of population in the northern and southern hemispheres.

Northern hemisphere: _____

Southern hemisphere: _____

- (b) In the box below, draw an annotated map or diagram to show the distribution of population in your chosen region, country (or countries).

Title:	

Key:

QUESTION TWO: Population Change

Read the geographic concept below and refer to it when answering this question.

Geographic Concept

Change involves any alteration to the natural or cultural environment. Change can be spatial and / or temporal. Change is a normal process in both natural and cultural environments. It occurs at varying rates, at different times, and in different places. Change can bring about further change.

The Demographic Transition Model

For copyright reasons, this resource cannot be reproduced here.

Source (adapted): <http://2012books.lardbucket.org/books/regional-geography-of-the-world-globalization-people-and-places/s04-04-globalization-and-development.html>

The **Demographic Transition Model** shows five stages of change in a population over time.

(a) Fully describe what **Stage 2** and **Stage 4** of the model show.

You should refer to the model and the concept of change.

Stage 2: _____

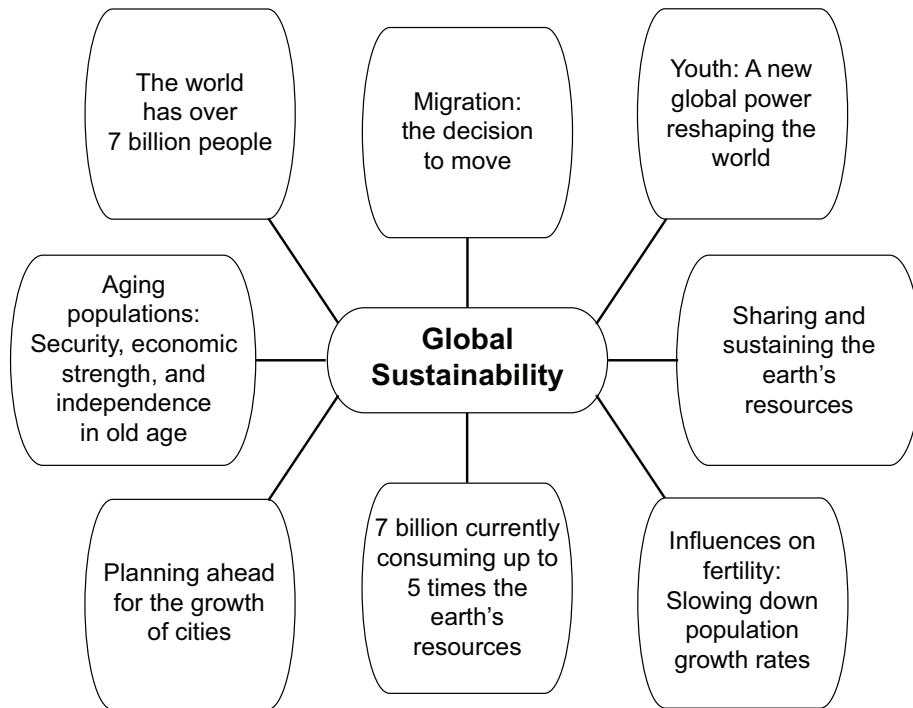
QUESTION THREE: Sustainability

Read the geographic concept below and refer to it when answering this question.

Geographic Concept

Sustainability involves adopting ways of thinking and behaving that allow individuals, groups, and societies to meet their needs and aspirations without preventing future generations from meeting theirs.

Many countries are finding it difficult to meet the needs of their populations and to plan for future generations.



Source (adapted): <http://www.unfpa.org/sites/default/files/pub-pdf/EN-SWOP2011-FINAL.pdf>

Study the diagram above of global sustainability and refer to it when answering (a).

(a) (i) Explain what is meant by the term “fertility”.

(ii) How could a change in fertility rates slow down population growth rates?
