

91146R



NEW ZEALAND QUALIFICATIONS AUTHORITY  
MANA TOHU MĀTAURANGA O AOTEAROA

QUALIFY FOR THE FUTURE WORLD  
KIA NOHO TAKATŪ KI TŌ ĀMUA AO!

## Level 2 Sāmoan, 2017

**91146 Demonstrate understanding of a variety of written and/or visual Sāmoan text(s) on familiar matters**

9.30 a.m. Friday 1 December 2017  
Credits: Five

### RESOURCE BOOKLET

Refer to this booklet to answer the questions for Sāmoan 91146.

Check that this booklet has pages 2–6 in the correct order and that none of these pages is blank.

**YOU MAY KEEP THIS BOOKLET AT THE END OF THE EXAMINATION.**

## FIRST TEXT: 'Āiga o ananafi ma 'Āiga o aso nei

Faitau le Tusitusiga o lo'o i lalo. Fa'aaogā e tali ai le Fesili Muamua.  
Read the text below and on page 3. Use it to answer Question One.

### 'Āiga o ananafi



O le fa'amatalaga lenei a le tama o Ioane na soifua i Sāmoa i le 1900:

O le mātou 'āiga potopoto sa nonofo, taumamafa ma gālulue fa'atasi. O le tele o a mātou galuega sa fai tele e tagata uma o le 'āiga; o le fa'amamāina o le lau'ele'ele, o le fausia o maota ma laoa, ma le tausiga o tagata o le 'āiga, e pei o le matai ma mātua tausī i aso ta'itasi. O tama o le 'āiga, na mātou faia galuega tetele e pei o le galulue i le ma'umaga fa'apea ma le saunia o umu ma isi mea taumafa (i le umukuka i fafo). O lo'u tuafafine, o ia o le tamsā ma e ta'u o le feagaiga. Na te lē faia ni galuega mamafa, 'auā e fa'apelepele i ai le mātou 'āiga. O aso uma lava, o a'u e saunia lana mea'ai ma 'ou te fa'atali fo'i se'ia uma ona ia 'ai, fa'ato'ā 'ou 'ai lea.

Sa sili ona tāua i o mātou mātua le a'oa'oina o i mātou ina ia mātou iloa tū ma aga o le aganu'u fa'apea le 'āiga. Mai le mātou lāiti sa fafaga i mātou i 'upu ma tala: "Fa'atulou pe 'ā e savali i luma o tagata. 'Aua le tautala tū. 'Aua le 'ai savali. 'Aua le pisa i luma o le fale o le matai. O taimi o taumafataga, sa 'a'ai muamua tagata mātutua fa'ato'ā 'ai ai lea o lo'u tuafafine, 'ae 'a'ai mulimuli mātou o tama. Na matuā sā fo'i ona mātou 'a'ai i se mea'ai na totoe mai a o mātou mātua.

Sa nonofo felagolagoma'i 'āiga uma. E māsani ona fa'apea mai lo'u tamā, "Tamo'e e fa'anoi le sāmala a Tui". A 'ou o'o i le fale o Tui, 'ou te nofo fa'alelei i lalo ma fa'apea atu iā te ia, "Fa'amolemole lau tōfā Tui, malie lou finagalo, pe mafai ona fa'aaogā e lo'u tamā lau sāmala toe 'aumi ai?"

Text source (adapted): Fofu I.F. Sunia, *Lupe o le Foaga* (1997), pp. 1–5.

Image source: [http://www.everyculture.com/images/ctc\\_01\\_img0022.jpg](http://www.everyculture.com/images/ctc_01_img0022.jpg).

## FIRST TEXT (continued)

### ‘Āiga o aso nei



O le fa’amatalaga lenei a le tama o Peteru o lo’o soifua i Sāmoa i le 2017:

E to’aono le mātou ‘āiga. E to’afā i mātou o le fānau ma o mātou mātua. Mātou te nonofo i le mātou fale pālāgi – e tolu potu moe, o le potu mālōlō, o le umukuka ma le fale tā’ele. E soso’o le mātou fale ma le fale o le ‘āiga o le uso o le mātou tinā. O le mātou ma’umaga e i uta o le mātou nu’u. Ma te ō i ai ma lo’u tamā pe ‘ā mālōlō a’oga ma galuega i le tele o Aso To’ona’i e tāpena mai ai mea mo le umu i le Aso Sa, ‘aemaise se ta’ita’i mo le faife’au.

E fa’alogo ma fa’aaloalo uma le mātou ‘āiga i le matai, o le Sa’o – o ia e faia fa’ai’uga mo le ‘āiga potopoto. E to’alāiti tagata o le mātou ‘āiga potopoto ‘auā o le to’atele o lo’o nonofo mamao i isi nu’u fa’apea atunu’u i fafo. E fa’ato’ā potopoto le to’atele o le ‘āiga pe a tutupu ni fa’alavelave pe fai se talanoaga.

O aso uma, e kuka lava e o’u tuafāfine po’o lo’u tinā le mea’ai o le afiafi i le ogāumu kesi i le umukuka o le fale. O lo’u tuafafine la’itiiti na te laulauina le mea’ai. A uma le mātou lotu afiafi, ona fai lea o le mātou mea’ai. E ‘a’ai fa’atasi le mātou ‘āiga i le laulau ‘ai se’i vaganā ua i ai ni mālō o lo’o asiasi mai, po’o se fa’atasiga a lo mātou ‘āiga potopoto, ona mātou ‘a’ai mulimuli lea pe ‘ā uma ona ‘a’ai tagata mātutua.

O le tele o ‘āiga ua i ai a lātou lava mea tōtino, e pei o televise, moa vao, ma ta’avale ‘auā ua maua tupe mai galuega ma ua faigofie fo’i ona lafo mai mea tōtino mai ‘āiga i fafo o Sāmoa.

Text source (adapted): Fofu I.F. Sunia, *Lupe o le Foaga* (1997), pp. 1–5.

Image source: <https://i.pinimg.com/236x/b3/5e/0c/b35e0cdf528381cd85b7d8dd3670020--samoa-polynesian-culture.jpg>

### Glossed vocabulary

soifua	<i>live/exist</i>
matua tausī	<i>elderly people who are cared for</i>
felagolagoma’i	<i>supportive/collectively</i>

**The resources continue  
on the next page.**

## SECOND TEXT: O vāega tāua e lima fa'asino i taumafa saogalēmū

Faitau fa'amatalaga o lo'o tūsia i pusa o lo'o i lalo ma le itūlau e 5. Fa'aaogā e tali ai le Fesili e Lua. Read the information in the tables below and on page 5, and use it to answer Question Two.

### O le iloa = Puipuia

Ia tū mamā	Aiseā?
<ul style="list-style-type: none"> <li>✓ Fufulu mamā lima a'o le'i <u>tagofia</u> taumafa fa'apea ma le taimi o lo'o <u>gāseseina</u> ai taumafa.</li> <li>✓ Fufulu mamā lima pe 'ā uma ona e fa'aaogā le fale'ese.</li> <li>✓ Fufulu ma fa'amamā uma mea e fa'aaogā i le gāseseina o taumafa.</li> <li>✓ Puipui le umukuka ma mea uma e gāsese ai taumafa mai <u>manu nini'i</u>, <u>meaola nini'i fa'alāfuā</u>, ma isi meaola.</li> </ul>	<p>O le tele o meaola nini'i fa'alāfuā o lo'o fe'āvea'i i lima, ie'ie, solo lima ma mea e fa'aaogā e fai ai kuka, e pei o laupapa e tipi ai mea taumafa, laulau ma fata o mea taumafa.</p>

Tu'u 'ese'ese mea taumafa mata ma mea taumafa vela	Aiseā?
<ul style="list-style-type: none"> <li>✓ Tu'u 'ese'ese mea taumafa e le'i fa'avelaina, pei o <u>'a'ano o manufasi</u>, moa, ma taumafa mai le sami mai isi taumafa.</li> <li>✓ Fa'aailoga 'ese mea faigaluega e pei o naifi ma laupapa e tipi ai mea taumafa e fa'aaogā i le gāseseina o mea taumafa mata.</li> <li>✓ Teu taumafa i ni ipu ua ufitā'i lelei ina ia 'aua ne'i <u>fefiloj</u> mea taumafa mata ma mea taumafa ua fa'avelaina.</li> </ul>	<p>O mea 'ai mata, 'aemaise 'a'ano o manufasi, <u>'a'ano o manufelelei</u>, mea taumafa mai le sami, e maua ai meaola nini'i fa'alāfuā, e ono fe'āvea'i atu i isi mea taumafa i le taimi o lo'o gāseseina ai.</p>

Fa'avela lelei taumafa	Aiseā?
<ul style="list-style-type: none"> <li>✓ Fa'avela lelei taumafa 'aemaise 'a'ano o manufasi, 'a'ano o manufelelei, fuāmoa ma taumafa mai le sami.</li> <li>✓ Fa'apuna taumafa e i ai supo ma sitiū, ia o'o i le 70 tikerī le <u>fua</u> o le vevela. Mo 'a'ano o manufasi ma manufelelei, ia manino le sua 'ae lē o le lanu piniki. E sili ona fa'aaogā le <u>fuafiva</u>.</li> <li>✓ Ia matuā toe fa'avevela lelei taumafa sa fa'avela muamua.</li> </ul>	<p>O le fa'avela lelei o taumafa, e tapēina ai meaola nini'i fa'alāfuā uma. Afai e lē fa'avelaina lelei taumafa e o'o i le 70 tikerī, e ono maua ai i fa'ama'i e pei o le E-Coli, Salmonella ma le Listeria.</p>

## SECOND TEXT (continued)

Teu taumafa i le fua o le vevela <u>saogalēmū</u>	Aiseā?
✓ 'Aua le tu'uina taumafa vela i le fua vevela māsani o le fale, e sili atu ma le 2 itūlā.	E vave ona fa'aopoopoina meaola nini'i pe 'ā teuina taumafa i le fua māsani o le vevela o le fale. O le taofia o le fua o le vevela i lalo ifo o le 5 tikerī po'o luga atu fo'i o le 60 tikerī, e mafai ona taofia ai le fa'aopoopoina o meaola nini'i. O nisi meaola nini'i fa'alāfuā e mafai lava ona ola i le fua o le vevela i lalo ifo o le 5 tikerī celcius.
✓ Vave tu'u i le pusa 'aisa, taumafa vela, taumafa e ono pala ma 'a'ano o manufasi ma manufeleele e le'i fa'avelaina (ia i lalo o le 5 tikerī).	
✓ 'Aua le 'umi tele o teu taumafa tusa lava pe tu'u 'aisa.	
✓ 'Aua le fa'avaiina taumafa tu'u 'aisa i le fua māsani o le vevela o le fale.	

Fa'aaogā <u>suāvai</u> ma isi mea gāsese saogalēmū	Aiseā?
✓ Fa'aaogā suāvai saogalēmū po'o le fa'amamāina ina ia saogalēmū.	O suāvai ma 'aisa e mafai ona sao i ai meaola nini'i fa'alāfuā ma <u>vailā'au 'o'ona</u> . E maua fo'i <u>vailā'au 'o'ona</u> i taumafa ua mafu pe fa'aleagaina. O le fa'aeteeteina i le fufulu ma le fofo'e mamā o taumafa, e fa'aititia ai le fa'afitāuli.
✓ Filifili taumafa 'ato'atoa ma le fou.	
✓ Filifili taumafa ua uma ona fa'amamāina fa'apitoa mo le saogalēmū e pei o suāsusu ua uma ona fa'avevelaina.	
✓ Fufulu mamā fua ma lau o lā'au 'aemaise pe 'ā taumafa mata.	
✓ 'Aua le fa'aaogāina taumafa ua te'a le <u>aso fa'atūlagaina</u> sa tatau ona fa'aaogāina ai.	

Source (adapted): <http://www.who.int/>

### Glossed vocabulary

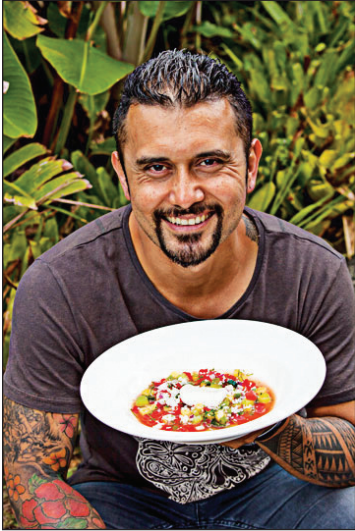
tagofia	<i>handle/handling</i>
gāseseina	<i>preparation</i>
manu nini'i	<i>insects</i>
meaola nini'i fa'alāfuā	<i>micro-organisms/bacteria</i>
'a'ano o manufasi	<i>meat</i>
fefiloi	<i>contact/mix</i>
'a'ano o manufeleele	<i>poultry/chicken</i>
fua	<i>temperature</i>
fuafiva	<i>thermometer</i>
saogalēmū	<i>safe</i>
suāvai	<i>water</i>
aso fa'atūlagaina	<i>expiry/due date</i>
vailā'au 'o'ona	<i>chemicals</i>

The resources continue on the next page.

### THIRD TEXT: *O Michael Meredith, o se ali'i kuka lauiloa i Niu Sila*

Faitau le tusitusiga o lo'o i lalo. Fa'aaogā e tali ai le Fesili e Tolu.

Read the text below. Use it to answer Question Three.



**Michael Meredith**

O Michael Meredith o sē tasi o tagata kuka e lauiloa ma talenia i le lalolagi. Ua lauiloa o ia i Niu Sila ma le lalolagi ona o le 'ese'ese ma le mānaia o itū'āiga mea taumafa ma taumafataga ua ia saunia.

Mai i lona la'itiiti a'o tuputupu a'e i Sāmoa, na māsani ai i le faiga o le umu fa'atasi ai ma le tapēina o pua'a ma moa mo le faiga o mea'ai a lo lātou 'āiga. O le valu o ona tausaga sa 'amata ai ona ia kukaina mea'ai ma lona tinā o Metita. Sa fai le fale 'aiga panikeke a lona tinā i le māketi i Apia ma sa ia a'oa'oina Michael ina ia iloa le tāua o mea'ai. Na ia fa'apea atu iā Michael, "Ia fa'aaogā fuālā'au 'aina ma meaola mai le tātou lava fanua. Ia fa'apelepele fo'i i mea'ai 'ae 'aua le fa'ama'imauna mea'ai 'auā sa faigatā le totōina ma le seleseleina."

I le sefulu tolu o ona tausaga, na tu'ua ai e Michael Sāmoa ma ona mātua 'ae malaga mai i Niu Sila e nonofo ma nisi o lona 'āiga potopoto, 'auā se lumana'i manuia. Sa lē māfaufauina o le 'ā 'avea o ia ma se tagata kuka 'ae peita'i ina ua uma ana a'oga, na ia faigaluega ai i le fale 'aiga o le Vinnies ma o i'inā na ia fiafia tele ai i le gāseseina o mea taumafa.

Sa a'oga i le Iunivesitē o le Auckland University of Technology ma na ia mauaina ai fo'i le sikolasipi e a'oga ai i le Culinary Institute o Amerika. I lana va'aiga i lenei matāfaioi o le kuka, sa ia fa'apea ai, "Ou te mafaia! E ui ina faigatā ma 'umi se taimi e a'oa'oina ai, 'ae 'ou te iloa e mafai ona 'ou 'ausia." Na va'aia le lelei ma le naunau o Michael ina ia taunu'u i se tulaga maualuga i mea tau kuka.

Ina ua ia toe fo'i mai i Niu Sila, ma ua fa'ateleina fa'ailoga tau kuka na maua e Michael, sa ia taumafai ina ia 'amata sona ia lava fale 'aiga. I le 2007, na tatalaina ai le fale 'aiga o le Meredith's. I le tausaga 2008, 2009, fa'apea ma le 2011 na maua ai e le Meredith's le fa'ailoga o le fale 'aiga sili i Niu Sila.

I le masina o Iuni i le tausaga lenei, na āmana'iaina ai le tautua a Michael o lo'o fai pea mo alo ma fānau i Niu Sila. Sa fa'ae'eina i ai le fa'ailoga a le tupu tama'ita'i o Elisapeta (ONZM). O le tautua a Michael mo isi, na te foa'iina tupe e maua mai i lona fale 'aiga fa'apea fo'i ma mea'ai o le mālōloga, mo tamaiti a'oga i le itū i saute o Aukilani. O le to'atele o nei tamaiti e lē o maua ni a lātou mea'ai mo le a'oga.

Ua telē le 'ese'esega o le tulaga o le ōlaga o Michael i le taimi lenei, mai le tulaga sa i ai i taimi o fesoasoani ai i le fale 'aiga panikeke a si ona tinā. 'Ae ui i lea, o lo'o tumau pea le fa'avae ma le mea na ia a'oa'oina mai i lona la'itiiti. O le tala a Michael, "Afai e te galue mālosi ma fa'asagatonu lou māfaufau i se mea lelei e te fia 'ausia, e fa'apēnā ona manuia lau taumafaiga. Ia 'aua fo'i ne'i galo le fa'avae o lou ōlaga mai ou mātua ma lou fa'asinomaga Sāmoa."

Text source (adapted): David Riley, *Samoan Heroes* (Midas Printing International, 2015), pp. 95–97.

Image source: <http://noted-cdn.azureedge.net/uploads/listener/2013/09/MichaelMeredith1.jpg>.



