

91146R



Mana Tohu Mātauranga o Aotearoa
New Zealand Qualifications Authority

Level 2 Samoan 2023

91146 Demonstrate understanding of a variety of written and/or visual Samoan text(s) on familiar matters

Credits: Five

RESOURCE BOOKLET

Refer to this booklet to answer the questions for Samoan 91146.

Check that this booklet has pages 2–4 in the correct order and that none of these pages is blank.

YOU MAY KEEP THIS BOOKLET AT THE END OF THE EXAMINATION.

TEXT A: O se tala mai se mekasini (A magazine article)

This is a magazine article about social media use.

Glossed vocabulary

fa'afesāga'i	face to face (in person)
initaneti	internet
tekenolosi	technology

A'afiaga o tupulaga talavou ona o feso'ota'iga ma isi i luga o tekenolosi

O lo'o popole nisi tagata popoto ona o le fa'aaogāina e tupulaga talavou o tekenolosi e feso'ota'i ai ma isi tagata. Ua a'afia ai o latou mafaufau ma lē fiafia ai e pupula lelei i tagata pe ā fa'afesāga'i. Ua misia le talanoa fa'afesāga'i, e malamalama lelei ai le tasi tagata i lagona o le isi. O taimi nei, e lagona le fefe e toe talanoa pe ā fa'afesāga'i.

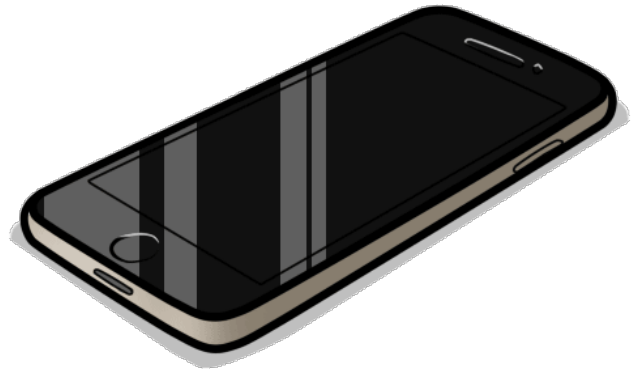
O nisi e lagona le lē fiafia iā i latou lava pe ā va'ai atu i le mananaia o ata o nisi i luga o le initaneti. Ona taumafai lea e fa'atusatusa a latou ata ma fa'asoa atu. Ae peita'i, a lē mafai ona fa'afetaui a latou fa'amatalaga o lo'o fa'asalalauina ma lagona moni, ona lē fiafia lea ma fa'anoanoa.

O le mea moni, a'o le'i iai se Instagram, na fa'aaogā e tupulaga telefoni e talanoa ai ma uō, pe talanoa fo'i pe ā ō e tafafao. O nei tafaoga, e na o le feoa'i solo lava, ae sa maua ai e tupulaga le avanoa e talanoa ai i so'o se tagata. O le

tulaga lea o lo'o misia e tupulaga o aso nei.

E tatau i mātua ona a'oa'o fanau i le fa'aaogāina tatau o tekenolosi mo feso'ota'iga. Ia iai ni tulāfono i le fa'aaogāina i totonu o āiga ma ia tele fo'i se taimi o mātua e mafuta ai ma fanau.

Ia taumafai fo'i e ave fanau i ta'aloga ma nisi mea e fiafia iai, ina ia ave'esea ai le matafefe ma lagona fa'atusatusa i isi.



TEXT B: Laupepa fa'alauiloa (Brochure)

This is a brochure that contains three Samoan attractions.

Glossed vocabulary

āna	cave
pipisi	splash out
māse'ese'e	slippery
apefa'i	ladder

Matāfaga o Lalomanu (Lalomanu Beach)

O le matāfaga o Lalomanu i Upolu e fiafia tele tagata tafafao mai fafo ma tagata Sāmoa lava latou e asiasi iai. E iai faleo'o e mālōlō iai pe ā vevela le lā, ma o lo'o ola ai niu ma la'au i autafa e aumaia le 'ea mālū. E manaia mo tā'elega i le sami lanu moana. Pe ta'a'alo fo'i i luga o le matāfaga. O se nofoaga o lo'o malu puipuia lelei mo le tele o 'ia ma nisi meaola o le sami. Mo tagata e fiafia i ia vāega, e tatau lava ona e asiasi iai.

O Pupū o Alofa'aga (Alofa'aga Blowholes)

O se mata'aga lauiloa mo tagata tafafao i le nu'u o Tāga i Savai'i. E 'ōmai i uta galu tetelē ma malolosi ma ō atu i totonu o le āna ona pipisi mai lea i fafo o le suāsami i pupū o lo'o iai. E mafai ona o'o atu le maualuluga o le suāsami i le 20 mita pe sili atu fo'i. Ia fa'aeteete pe ā savavali i luga o papa māse'ese'e. E iai le tupe e totogi muamua i le nu'u ona fa'atoā mafai lea ona e asiasi iai.

Tō Sua (Ocean Trench)

O sē tasi nei o mata'aga i totonu o le nu'u o Lotofaga i Upolu. O se vaitā'ele e manino, ma e ola ai le tele o la'au lanu meamata i 'autafa. E maualalō le vai, ae e iai le apefa'i e ō ai aga'i i lalo mo ni tā'elega. O nisi fo'i tagata e taunu'u loa i lalo mai le apefa'i ona fa'apa'u'ū loa lea i totonu o le vai. Ia fa'aeteete pe ā fa'aaogāina le apefa'i auā e māse'ese'e pe ā susū.

TEXT C: Tusitusiga fa'asolo (Blog)

This is a blog post from a young woman about doing her chores.

Glossed vocabulary

puletasi	female Samoan attire
'ote	growl

☰
🏠

O le faiga o fe'au

Na su'i e lo'u tinā matua le puletasi mo a'u e ofu i mea fai a le āiga e pei o ni maliu, auā e masani ona matou faia fe'au a matai. O lo'u tinā na te va'aia le 'au fai fe'au ma e matuā ote lava. E fai mai lava, "Fai lelei ou lavalava! Va'ai sa'o i le mea e te savali iai."

O isi taimi pe tusa ma le itulā ma le 'afa o fai pea fe'au ma ou te lagona le matuā lē lavā ma fia 'ai. "Mata 'ata'ata ae aua le mana'o fua mata i mea'ai." O upu lava nei a tinā e fai mai pea. Ae e faigatā tele iā te a'u ona 'ata'ata pe ā 'ou le lavā ma fia 'ai. Ae ui lava i lea, ou te fiafia pe ā fa'alogo atu o fa'apea mai se toea'ina, "Lelei tele le teine lea, na te iloa lelei ona fai fe'au." O lo'u tina fo'i e lelei tele lana kuka ma ou te fiafia e matamata ma a'oa'o le kukaina o mea'ai ina ia 'ou iloa fo'i ona fai i le lumana'i.

O le iloa ona fai o fe'au o se vāega tāua tele lea i olaga o fānau Sāmoa. Auā e lē tatau i tagata matutua ona tula'i e fai a latou fe'au, ma o fānau o latou tiute ia e fai. O fe'au masani ia o le olaga fa'asāmoa.

Mai lava i le amataga na a'oa'o matou e mātua ina ia iloa fai fe'au i taimi o taumafataga i lo matou fale fa'apea foi i le lotu. A matou matutua ane, ae ua lava le malamalama i mea e tatau ona fai pe ā fa'atasi āiga pe tali fo'i ni mālō.

❤️
💬 0
📤
🛑

Acknowledgements

Material from the following sources has been adapted for use in this assessment:

Text B

<https://www.agoda.com/lalomanu-beach/maps/lalomanu-ws.html?cid=1844104>

<https://www.travelinc.co.nz/content/news/pacific-islands/item/7022-unesco-geoparks-in-pacific>

<https://www.tripzilla.com/photo-to-sua-ocean-trench/10111>