

L2-ARTR



Mana Tohu Mātauranga o Aotearoa
New Zealand Qualifications Authority

Level 2 Art History 2023

91180, 91181, and 91182

RESOURCE BOOKLET

Refer to this booklet to answer the questions for Art History 91180, 91181, and 91182.

Check that this booklet has pages 2–21 in the correct order and that none of these pages is blank.

YOU MAY KEEP THIS BOOKLET AT THE END OF THE EXAMINATION.

INSTRUCTIONS

This booklet contains the plates for Art History 91180, 91181, and 91182.

There are six plates for each of the Level 2 areas of study:

- **Aspects of Gothic Art (c.1120–1420):** Plates 1–6 (pages 3–8)
- **Towards Modernism (c.1780–1900):** Plates 7–12 (pages 9–14)
- **Art in Aotearoa (c.1800–1980):** Plates 13–18 (pages 15–20)

Read your chosen questions carefully before making your plate selections.

ASPECTS OF GOTHIC ART (c.1120–1420)

Plate 1: Giotto, *Madonna Enthroned (Ognissanti Madonna)*, 1300–1305, tempera and gold on panel, 325 × 204 cm, Uffizi Gallery, Florence, Italy

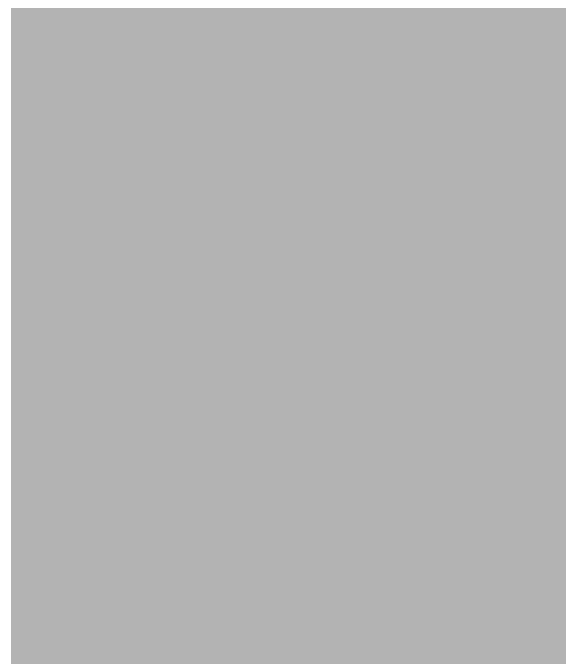


Plate 2: Chartres Cathedral (west façade), also known as the Cathedral of Our Lady of Chartres, partly built starting in 1145 and then reconstructed over a 26-year period after the fire of 1194, limestone, Chartres, France



Unknown artist, *Notre-Dame de la Belle-Verrière (The Blue Virgin)*, c.1180 and c.1225, height 2.25 m, stained glass and lead, located in the first bay of the choir after the south transept, Chartres Cathedral.

Plate 3: Simone Martini, *Maestà*, 1315–1321, fresco, 7.63 × 9.7 m, Palazzo Pubblico in Siena, Italy



Detail (99 × 85 cm).

Plate 4: Pietro Lorenzetti, *Entry of Christ into Jerusalem*, c.1320, fresco, dimensions unknown, Lower Basilica of San Francesco, Assisi, Italy



Plate 5: Unknown artist(s), *The Luttrell Psalter*, featuring farming scenes including winter ploughing, c.1320–1340, illuminated book of Psalms commissioned by Sir Geoffrey Luttrell, illustrated on parchment, British Library, London, England



Detail of the winter ploughing.

Plate 6: Limbourg Brothers, *June*, *Les Très Riches Heures du Duc de Berry* (The Very Rich Hours of the Duke of Berry), 1412–16, illumination on vellum (fine quality calfskin), 22.5 × 13.6 cm, Condé Museum, Oise, France



Sainte-Chapelle is in the background at the right.

TOWARDS MODERNISM (c.1780–1900)

Plate 7: Jacques-Germain Soufflot, Jean-Baptiste Rondelet, *The Panthéon*, 1757–1790, stone, marble, Paris, France



Exterior view.



Interior (panoramic) view.

Plate 8: Jean-Auguste-Dominique Ingres, *Mademoiselle Caroline Rivière*, 1806, oil on canvas, 100 × 70 cm, Louvre Museum, Paris, France

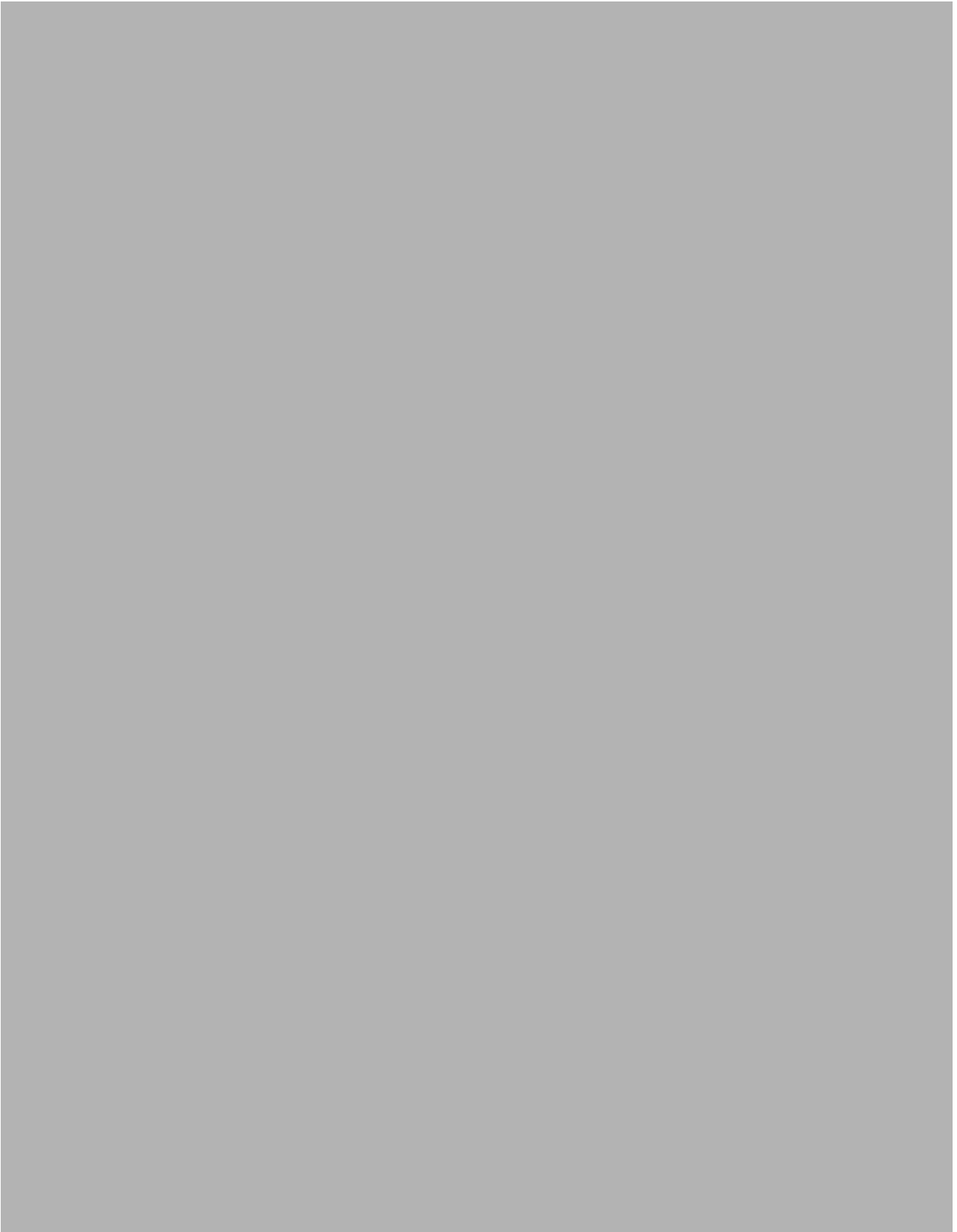


Plate 9: Gustave Courbet, *A Burial at Ornans*, 1849–50, oil on canvas, 315 × 668 cm, Musée d'Orsay, Paris, France



Plate 10: Édouard Manet, *Portrait of Emile Zola*, 1868, oil on canvas, 146.5 × 114 cm, Musée d'Orsay, Paris, France

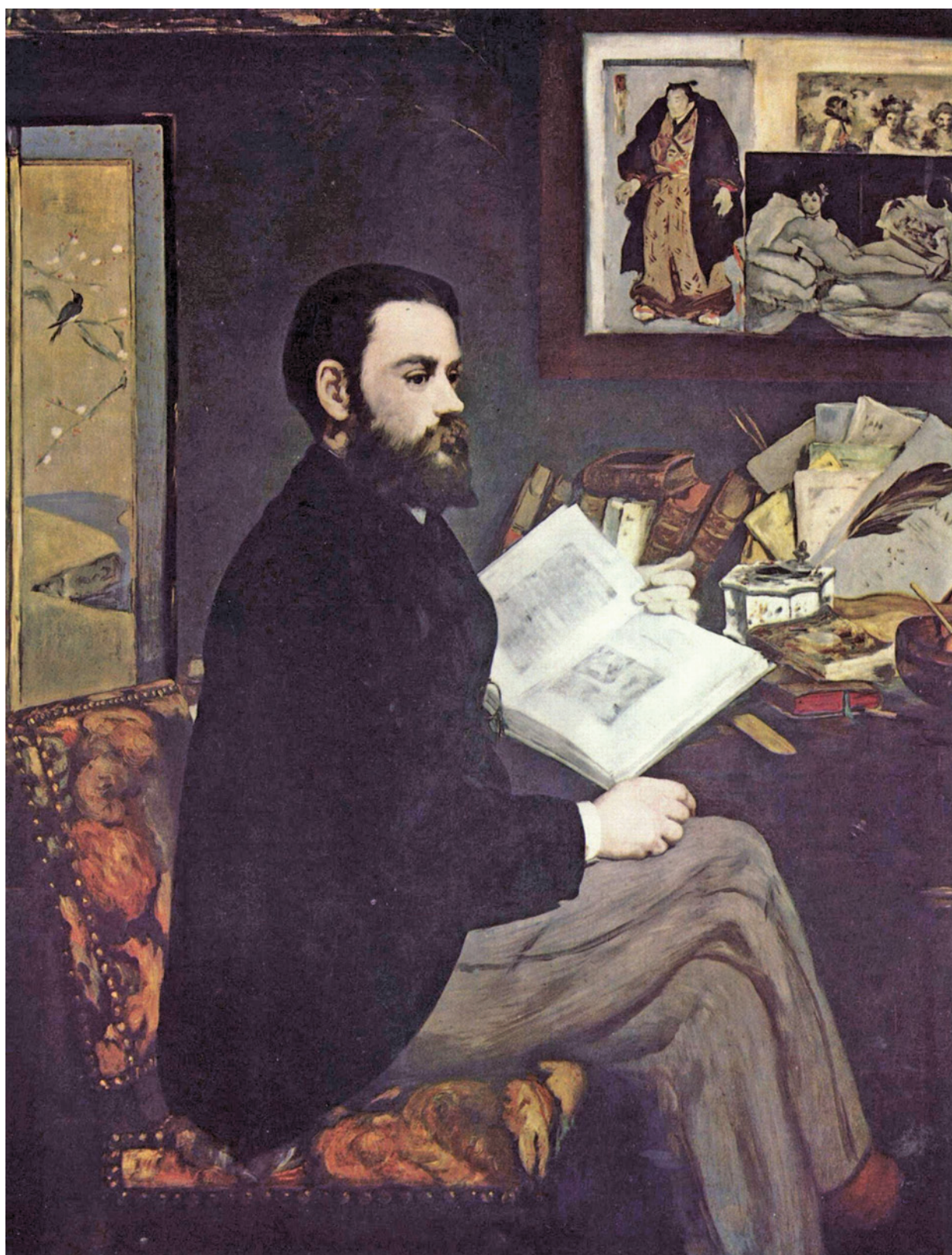


Plate 11: Claude Monet, *La Gare Saint-Lazare*, 1877, oil on canvas, 75 × 105 cm, Musée d'Orsay, Paris, France

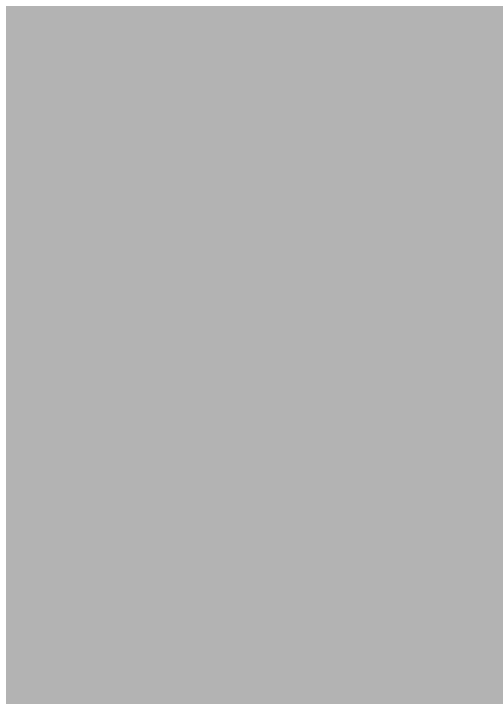


Plate 12: Georges Seurat, *The Circus*, 1891, oil on canvas, 186 × 152 cm, Musée d'Orsay, Paris, France



ART IN AOTEAROA (c.1800–1980)

Plate 13: Unknown weaver, *Korowai* (cloak), 1800/1900, muka (flax) or tī tōī (mountain cabbage tree) fibre, gold and black traditional dyes, 1020 × 1510 × 50 mm, Museum of New Zealand Te Papa Tongarewa, Wellington



Detail.

Plate 14: Gottfried Lindauer, *Ana Reupene Whetuki and Child (Ngāti Maru)* (also known as Heeni Hirini and Heeni Phillips), 1880, oil on canvas, 1025 × 885 × 90 mm, Christchurch Art Gallery Te Puna o Waiwhetū



Plate 15: Charles Frederick Goldie, *Memories: Ena Te Papatahi, a Chieftainess of the Ngāpuhi Tribe*, 1906, oil on canvas, 1270 × 1016 mm, Auckland Art Gallery Toi o Tāmaki

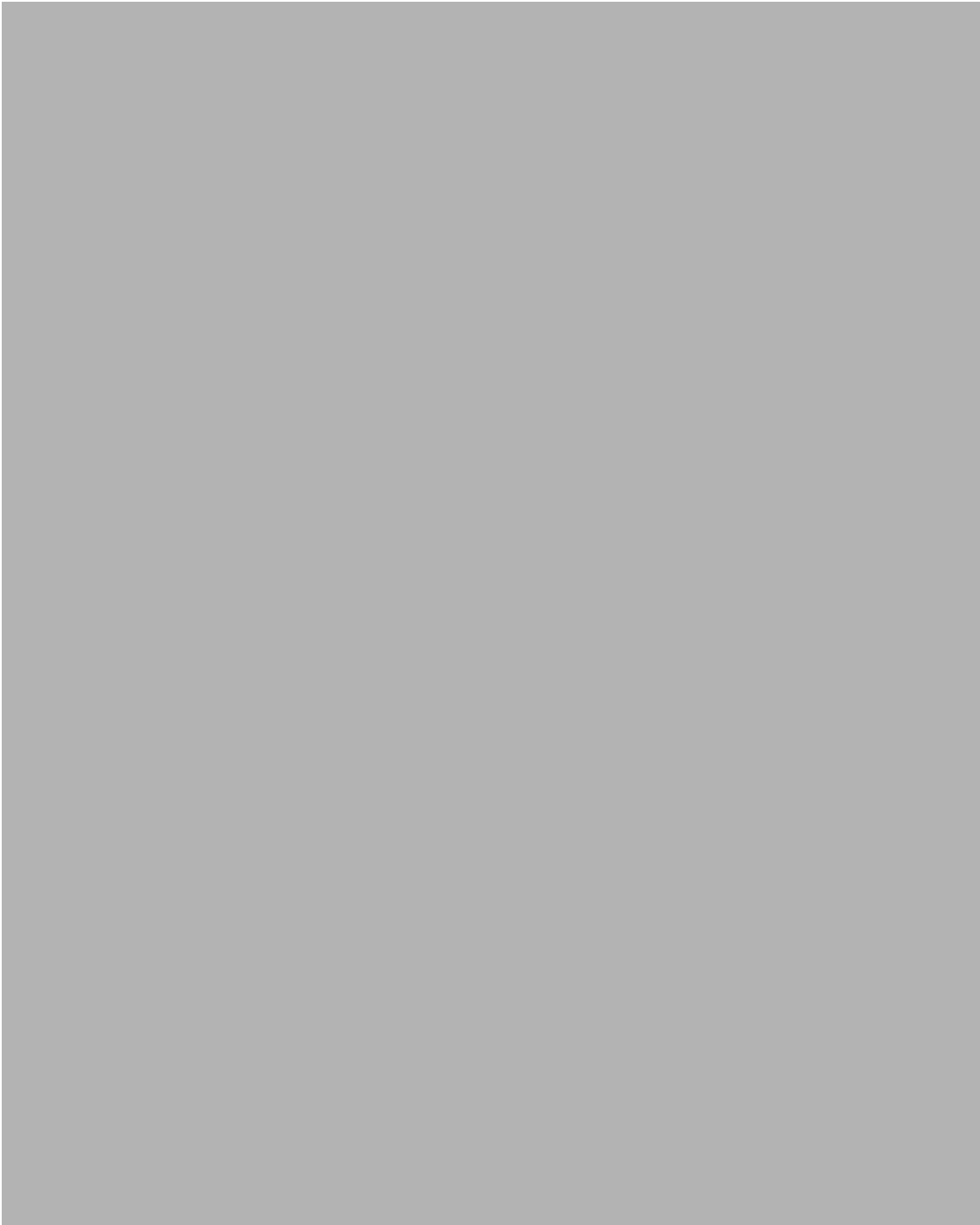


Plate 16: Colin McCahon, *The Angel of the Annunciation*, 1947, oil on cardboard, 647 × 521 mm, Museum of New Zealand Te Papa Tongarewa, Wellington



Plate 17: William A. Sutton, *Pastoral*, 1959, oil on canvas, 1371 × 1371 mm, Auckland Art Gallery
Toi o Tāmaki

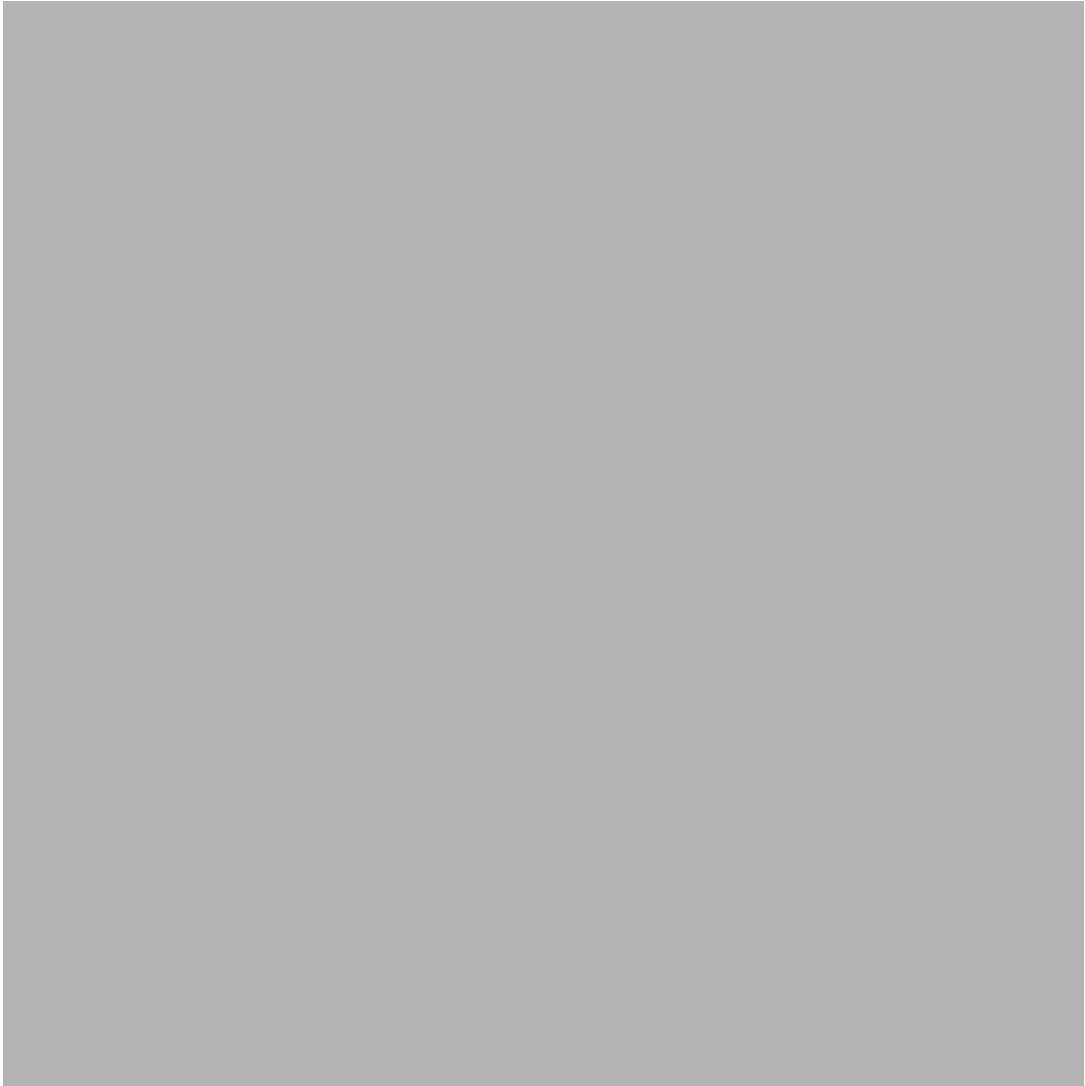


Plate 18: Doris Lusk, *Tahunanui, Nelson*, 1947, oil on board, 796 × 641 mm, Hocken Collections Uare Taoke o Hākena, University of Otago, Dunedin



Acknowledgements

Material from the following sources has been adapted for use in this assessment:

Plate 1

https://commons.wikimedia.org/wiki/File:Giotto_Madonna_In_Glory_Tempera_on_Panel_1305-10_582px.jpg. Public domain

Plate 2

https://en.wikipedia.org/wiki/Chartres_Cathedral#/media/File:Facade_cathedral.jpg. CC by SA 3.0
https://commons.wikimedia.org/wiki/File:Vitrail_Chartres_Notre-Dame_210209_1.jpg. Public domain

Plate 3

https://commons.wikimedia.org/wiki/File:Simone_Martini_-_Maest%C3%A0_-_Google_Art_Project.jpg. Public domain
https://commons.wikimedia.org/wiki/File:SIMONE_MARTINI_Maest%C3%A0_%28detail%29_1315.jpg. CC by 2.0

Plate 4

https://commons.wikimedia.org/wiki/File:Pietro_Lorenzetti_-_Entry_of_Christ_into_Jerusalem_-_WGA13502.jpg. Public domain

Plate 5

<https://www.bl.uk/turning-the-pages/?id=a0f935d0-a678-11db-83e4-0050c2490048&type=book>
<https://www.britannica.com/event/Dark-Ages>

Plate 6

https://commons.wikimedia.org/wiki/File:Les_Tr%C3%AAs_Riches_Heures_du_duc_de_Berry_juin.jpg. Public domain

Plate 7

https://commons.wikimedia.org/wiki/File:Panth%C3%A9on,_Paris_25_March_2012.jpg. CC by SA 3.0
https://commons.wikimedia.org/wiki/File:Panth%C3%A9on_wider_centered.jpg. CC by SA 3.0

Plate 8

https://commons.wikimedia.org/wiki/File:Jean-auguste-dominique_ingres,_ritratto_di_mademoiselle_caroline_rivi%C3%A9re,_1806,_01.jpg. CC by SA 3.0

Plate 9

https://commons.wikimedia.org/wiki/File:Gustave_Courbet_-_A_Burial_at_Ornans_-_Google_Art_Project_2.jpg. Public domain

Plate 10

https://commons.wikimedia.org/wiki/File:Edouard_Manet_049.jpg. Public domain

Plate 11

https://commons.wikimedia.org/wiki/File:La_Gare_Saint-Lazare_-_Claude_Monet.jpg. Public domain

Plate 12

https://commons.wikimedia.org/wiki/File:Georges_Seurat_-_The_Circus_-_Google_Art_Project.jpg. Public domain

Plate 13

<https://collections.tepapa.govt.nz/object/524885>

Plate 14

<https://christchurchartgallery.org.nz/collection/69-93/gottfried-lindauer/ana-reupene-whetuki-and-child>

Plate 15

<https://www.aucklandartgallery.com/explore-art-and-ideas/artwork/1907/memories-ena-te-papatahi-a-chieftainess-of-the-ngapuhi-tribe>

Plate 16

<https://collections.tepapa.govt.nz/object/42318>

Plate 17

<https://www.aucklandartgallery.com/explore-art-and-ideas/artwork/3584>

Plate 18

<https://otago.ourheritage.ac.nz/items/show/5456>

