

92034R



Mana Tohu Mātauranga o Aotearoa
New Zealand Qualifications Authority

Level 1 Gagana Sāmoa 2024

**92034 Demonstrate understanding of written
Gagana Sāmoa related to everyday contexts**

Credits: Five

RESOURCE BOOKLET

Refer to this booklet to answer the questions for Gagana Sāmoa 92034.

Check that this booklet has pages 2–4 in the correct order and that none of these pages is blank.

YOU MAY KEEP THIS BOOKLET AT THE END OF THE EXAMINATION.

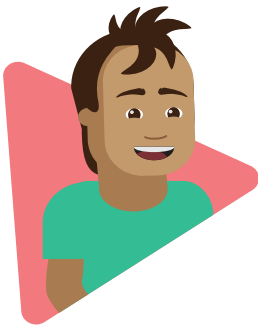
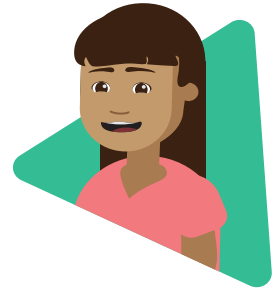
TEXT A: Meaalofa o le Kirisimasi (Gifts for Christmas)

Siutu and Paulo are shopping for Christmas gifts. Read the advertisements and their opinions below.

LĀEI SĀMOA			FALE TEKONOLOSI	FALE SE'EVAE
Aua ne'i e misia le pa'ū fa'apitoa lenei mo le Kirisimasi			Fa'atau nei sau telefoni fe'āvea'i, komipiuta po'o sau uati simati (smartwatch) i se tau taugofie	Pa'ū o le Kirisimasi
E 50% le pa'ū mo 'olua nei				A fa'atau lau pea se'evae muamua, e afa le tau o lau pea se'evae lona lua!
Puletasi	\$140	\$70		Vave mai loa, e fa'atau ni se'evae mo lou āiga atoa!
Alo'a	\$90	\$45	Afai e fai sau fa'atau, e tu'u lou suafa i le lūlū o le Kirisimasi mo le \$1,000	
Ie faitaga	\$48	\$24		
Sei	\$15	\$7.50		

SIUTU

Po'o le ā sa'u meaalofa e fa'atau mo lo'u tinā i le Kirisimasi? Ou te iloa, o lo'u tinā e fiafia tele i ana teuga fa'asāmoa, auā e fai mai o ia, e aulelei lava le teine Sāmoa i lana puletasi. E fiafia fo'i o ia e ta'alo i lana telefoni ma fai lana fa'atau i luga o le initaneti, auā e pisi tele i lana galuega.

**PAULO**

Po'o le ā sa'u meaalofa e fa'atau mo lo'u tamā i le Kirisimasi? O lo'u tamā e fa'ama'ima'i, ma ou te mana'o e fa'atau se meaalofa mo lona soifua maloloina, po'o se meaalofa e fa'afiafia ai lona loto. O lo'u tamā, o se tagata faigofie, e fiafia lava i so'o se meaalofa ou te fa'atauina mo ia.

TEXT B: *Tāfaoga ma o’u tausoga* (Hanging out with my cousins)

This is an overview of the writer’s day hanging out with their cousins.

Glossed vocabulary

fa’apisipisi	splash/splashing
fa’ata’amilo	around
masimelo	marshmallows

Sa matou tāfafao ma o’u tausoga i le fale o ō matou mātua matutua i le fa’aiuga o le vaiaso na te’a. Sa alu lo matou aso o tā’aalo ma tāmomo’e solo.

Tasi: Tāfaoga i tuāfale

Sa matou tāfafao i tua o le fale e amata ai le aso. Na ‘ai mea’ai e sili ona matou fiafia, e ‘ai ma fofola palanikeke felanulanua’i i luga o le mutia, matou te nonofo ai. Sa agi mai le savili ma susulu malosi mai le lā, ma mafanafana ai o matou tino.

Lua: Tā’elega i le vaitafe

Sa matou tā’e’ele i le vaitafe e latalata i le fale ona o le vevela o le aso. Sa matou a’au ma fa’apisipisi solo i le vai, ma atili ai lo matou fiafia.

Tolu: Tafu le afi

Sa matou potopoto fa’ata’amilo i se afi mu saesae ina ua goto le lā. Sa matou matamata i le vanimonimo ma fetū, ma talanoa, a’o fa’avevela masimelo e tui i le la’au ma tunu i le afi. Sa matou pepese ma taliē. O se mafutaga māfanafana ma le fiafia.

TEXT C: *Su'e ni tama ta'alo* (Looking for players)

This is a conversation between Levi and Tano.

Mālō Tano, e te fia ta'alo i le matou 'au kilikiti?
O lea e su'e ni tama ta'alo mo le matou 'au.

Mālō Levi, ua leva ona ou lē toe ta'alo i le kilikiti.

Sau pea e ta'alo. Tatou te fiafia fa'atasi ai ma fa'agaioi ai o tatou tino.

Ou te lē iloa po'o lelei pea la'u tā ma la'u fa'ate'a.

Aua le popole auā e fai tolēniga i le vaiaso e mafai ona fa'aleleia ai lau ta'alo.

Ae ou te pisi i le tele o taimi i la'u galuega ma feau o le āiga.

E lua tolēniga i le vaiaso. A e pisi, ua lava le tolēniga e tasi e te sau ai.
A o ta'aloga foi, e faia lea i le fa'aiuga o le vaiaso.

Ae ā, pe a leaga le 'au iā a'u?

Tano, aua e te mafaufau fa'apenā. O tama o le 'au kilikiti e faigofie lava.
Va'ai, e lē tāua le mālō, ae o le fa'amalosi tino ma le mafutaga ma uso.

Ia seki uso. A ou avanoa i se tolēniga, o le ā ou alu atu.

Ia manaia le tonu lenā uso.

**Acknowledgements**

Material from the following sources has been adapted for use in this assessment:

<https://stock.adobe.com/208267297>