

No part of the candidate evidence in this exemplar material may be presented in an external assessment for the purpose of gaining credits towards an NCEA qualification.

Design and Visual Communication

AS 91338

Exemplar A - Excellence

AS91338: Produce working drawings to communicate technical details of a design (4 credits) 2016

Achievement	Achievement with Merit	Achievement with Excellence
<ul style="list-style-type: none"><li>Produce working drawings to communicate technical details of a design.</li></ul>	<ul style="list-style-type: none"><li>Produce working drawings to clearly communicate technical details of a design.</li></ul>	<ul style="list-style-type: none"><li>Produce working drawings to effectively communicate technical details of a design.</li></ul>
Produce a set of <b>related</b> 2D instrumental working drawings that communicate technical details showing <b>complex visual information</b> .	Produce a set of working drawings that <b>clearly</b> communicate technical details showing complex visual information.	Produce a <b>coherent</b> set of working drawings that <b>effectively</b> communicate technical details showing complex visual information.
Demonstrate an ability to <b>use</b> drawing conventions in a working drawing.	Demonstrate an ability to <b>apply</b> drawing conventions appropriately to working drawings.	Demonstrate an ability to apply drawing conventions appropriately to the type of working drawing.

E

Comments:

This is an excellent example of a coherent set of 2-D working drawings produced using a CAD programme. The drawings include plan views, elevations, cross section, and enlarged construction details at 1:10. The drawings effectively communicate complex visual information.

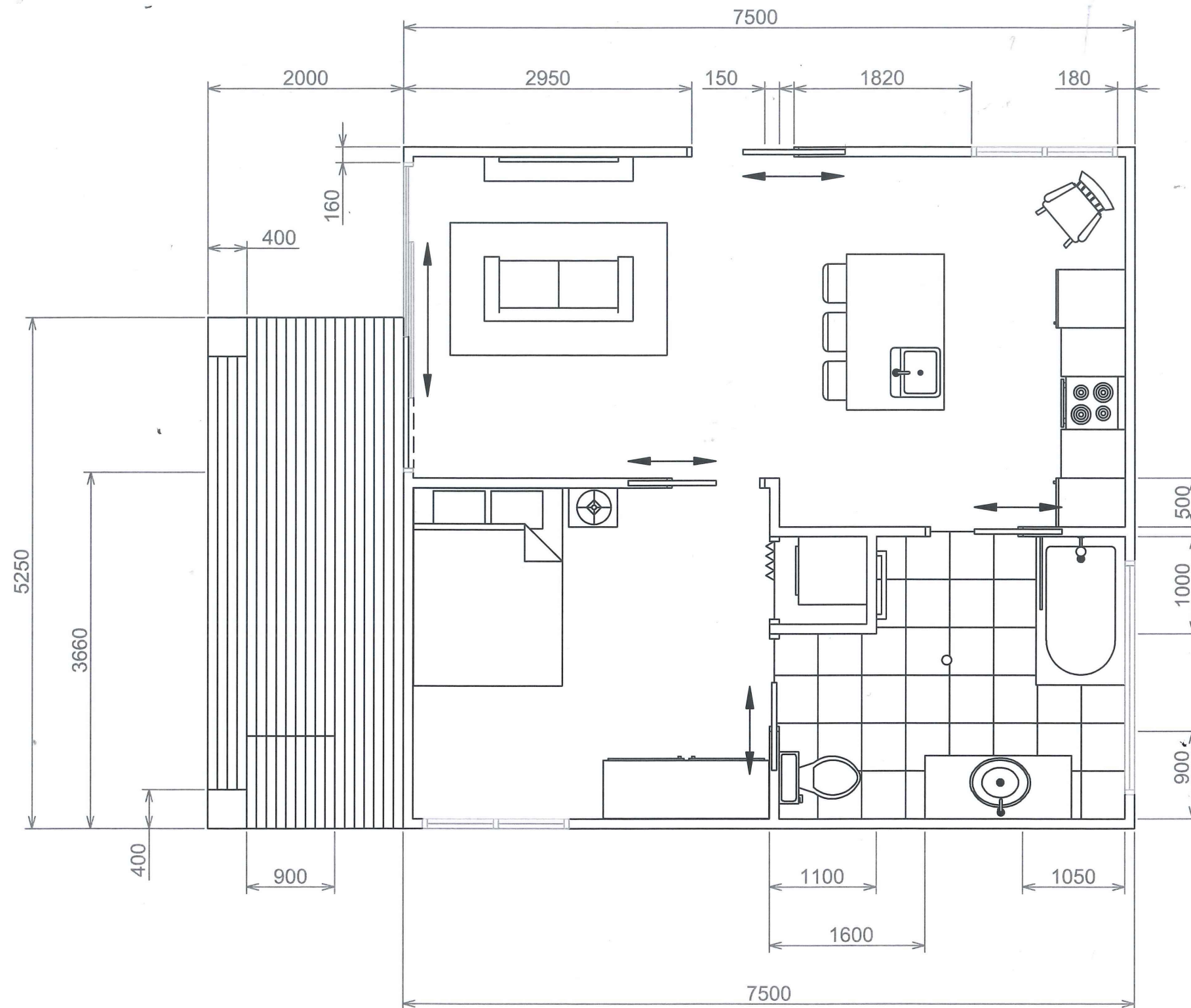
The plan view communicates technical details in the form of room fittings, door swings and windows. The elevations indicate exterior materials, windows and doors. The cross section, drawn at 1:50 conveys the technical details clearly and is supported by two enlarged details drawn at 1:10 to help clarify effectively more of the technical information on the cross section.

All the drawings are referenced and linked to one another to enable the drawings to be read as a coherent set of working drawings.

Conventions are shown correctly and enough are applied appropriately for this type of drawing.

The drawings have been drawn using standard scales: 1:100, 1:50, and 1:10.

NORTH



TITLE

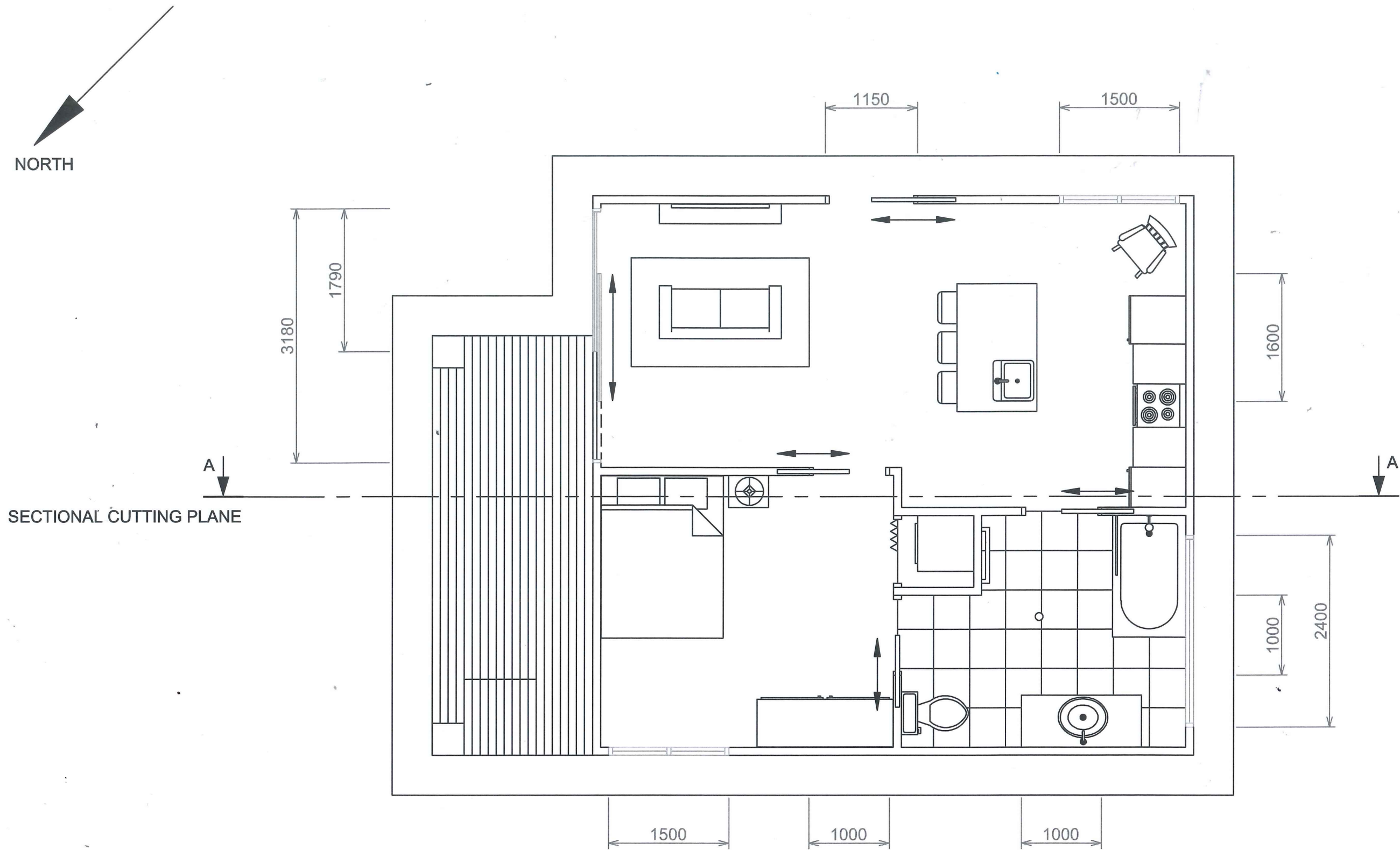
COTTAGE PLAN

A3

SCALE 1:50

DATE 25/08/17

SHEET 1



TITLE

COTTAGE PLAN AND ROOF CHAIN

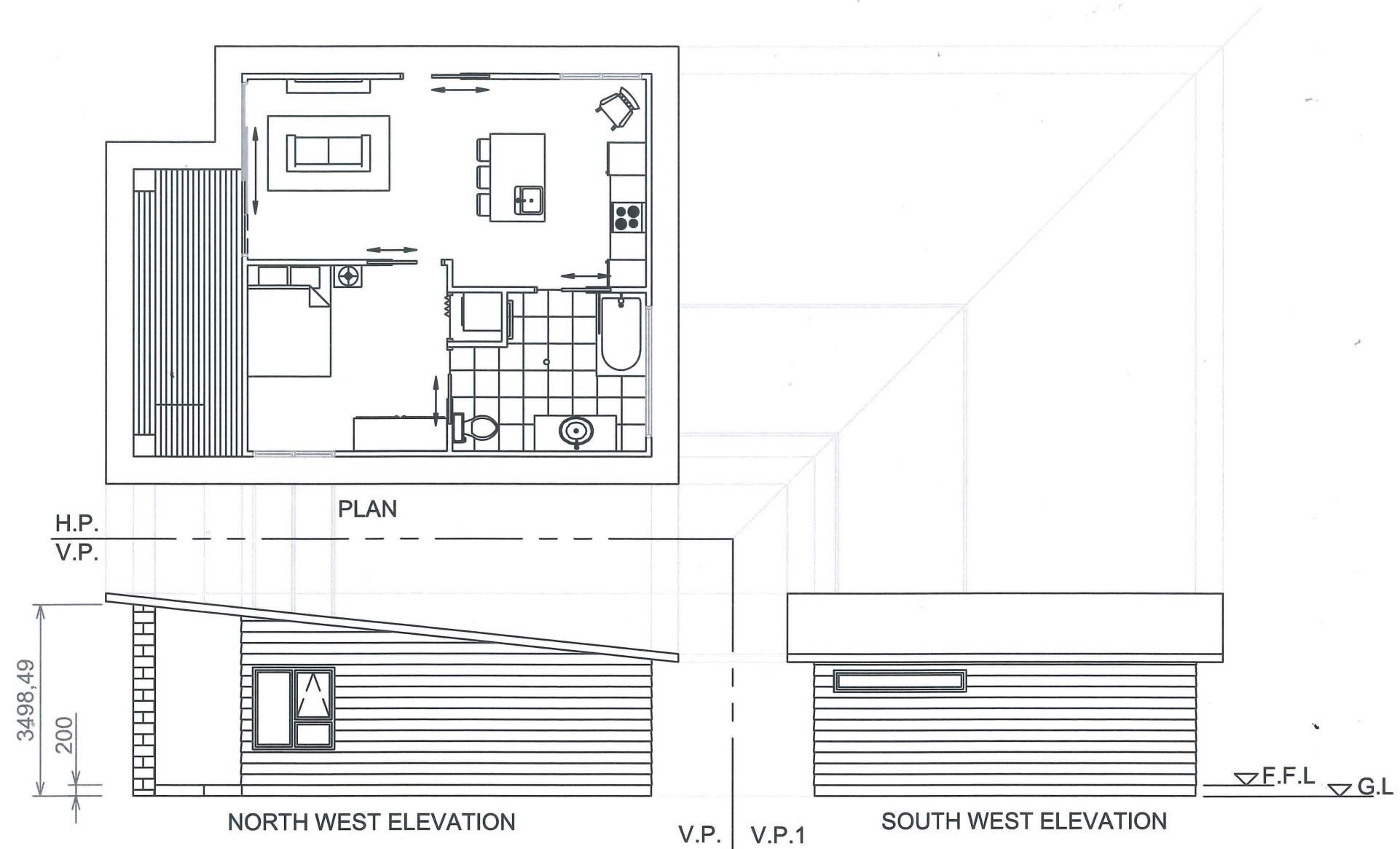
A3

C

SCALE 1:50

DATE 25/08/17

SHEET 2



TITLE

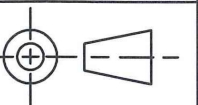
COTTAGE ELEVATIONS 1 OF 2

A3

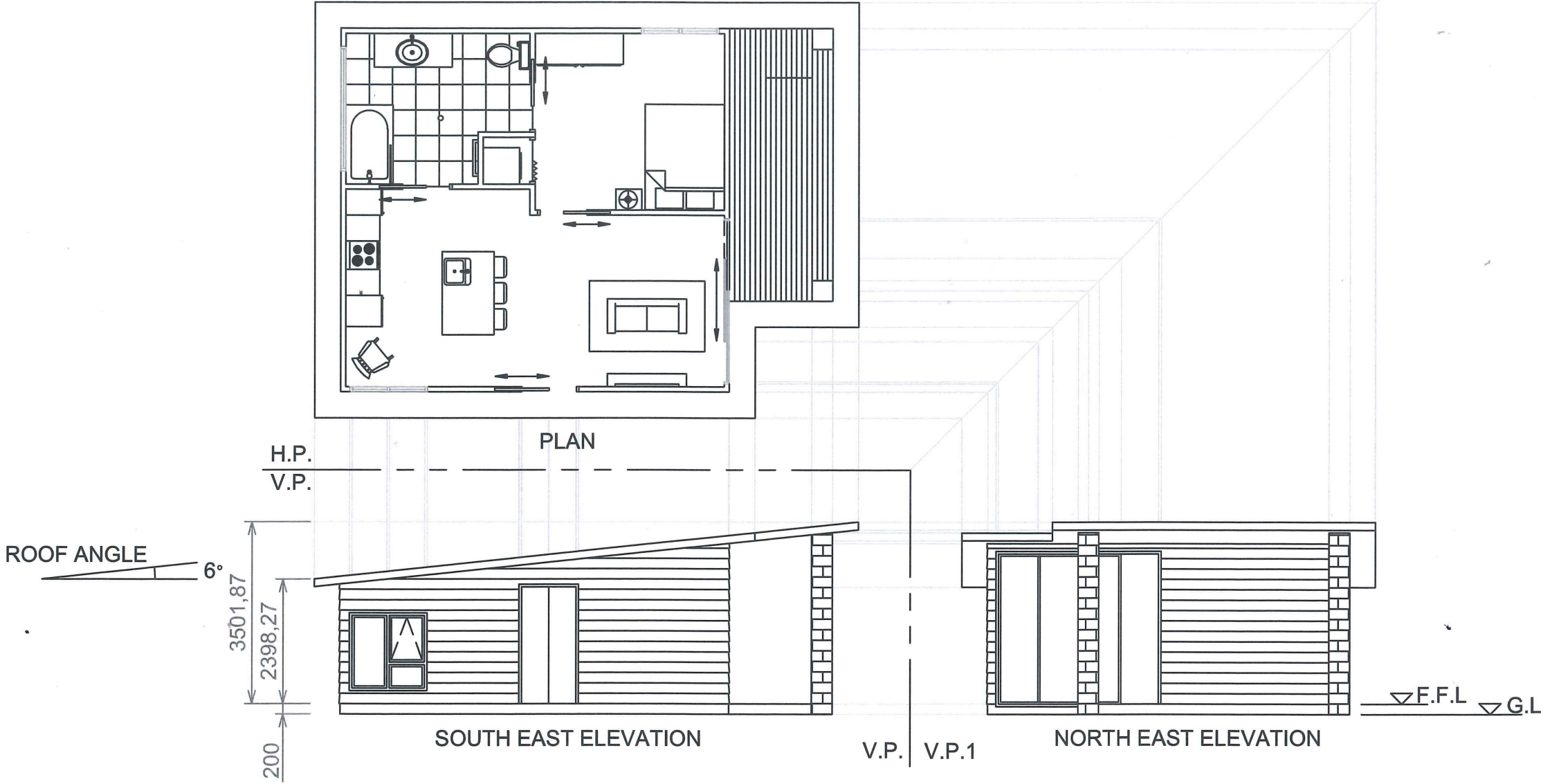
SCALE 1:100

DATE 25/08/17

SHEET 3







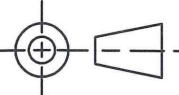
TITLE

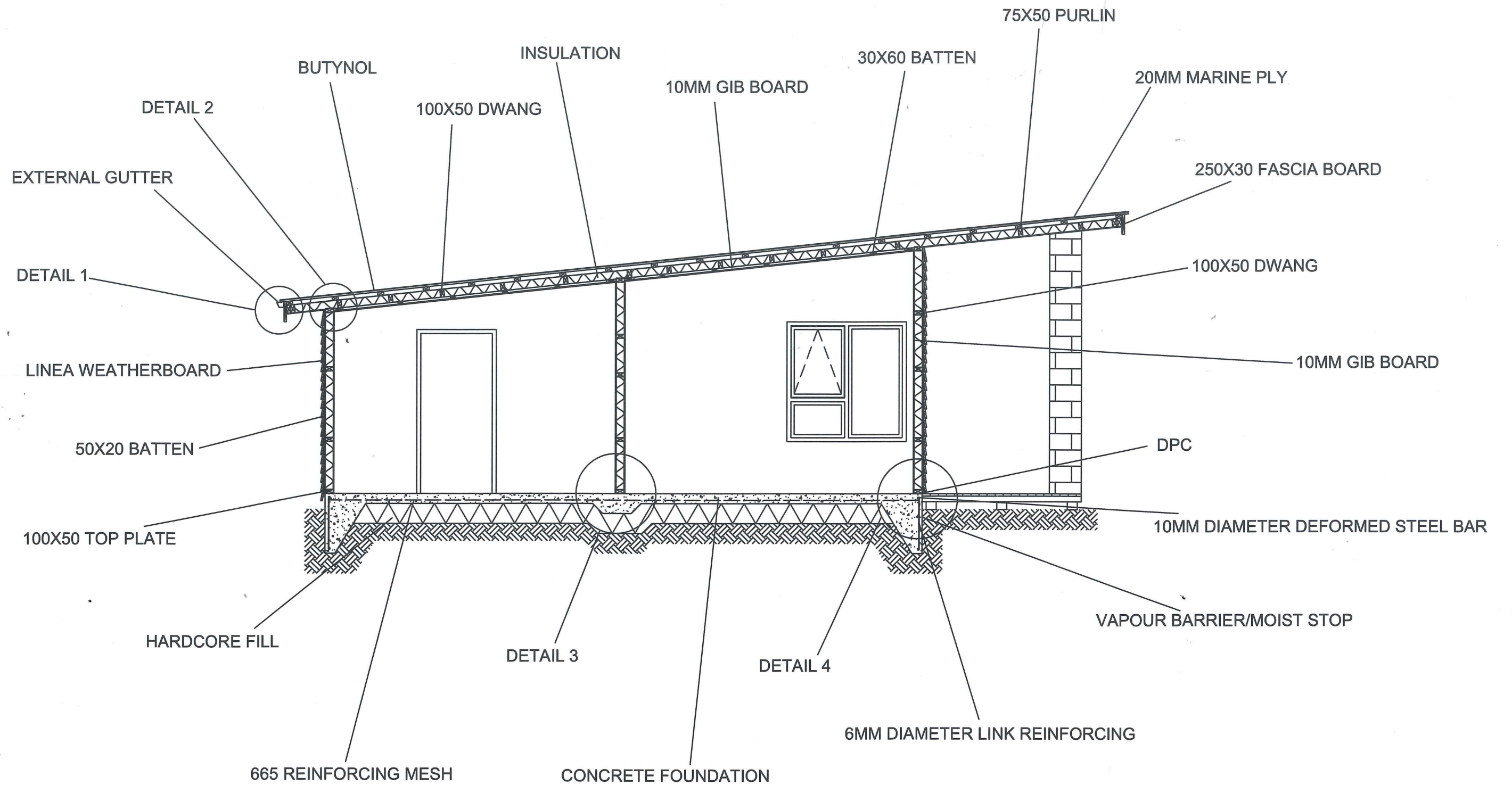
COTTAGE ELEVATIONS 2 OF 2

A3

SCALE 1:100 | DATE 25/08/17

SHEET 4





TITLE

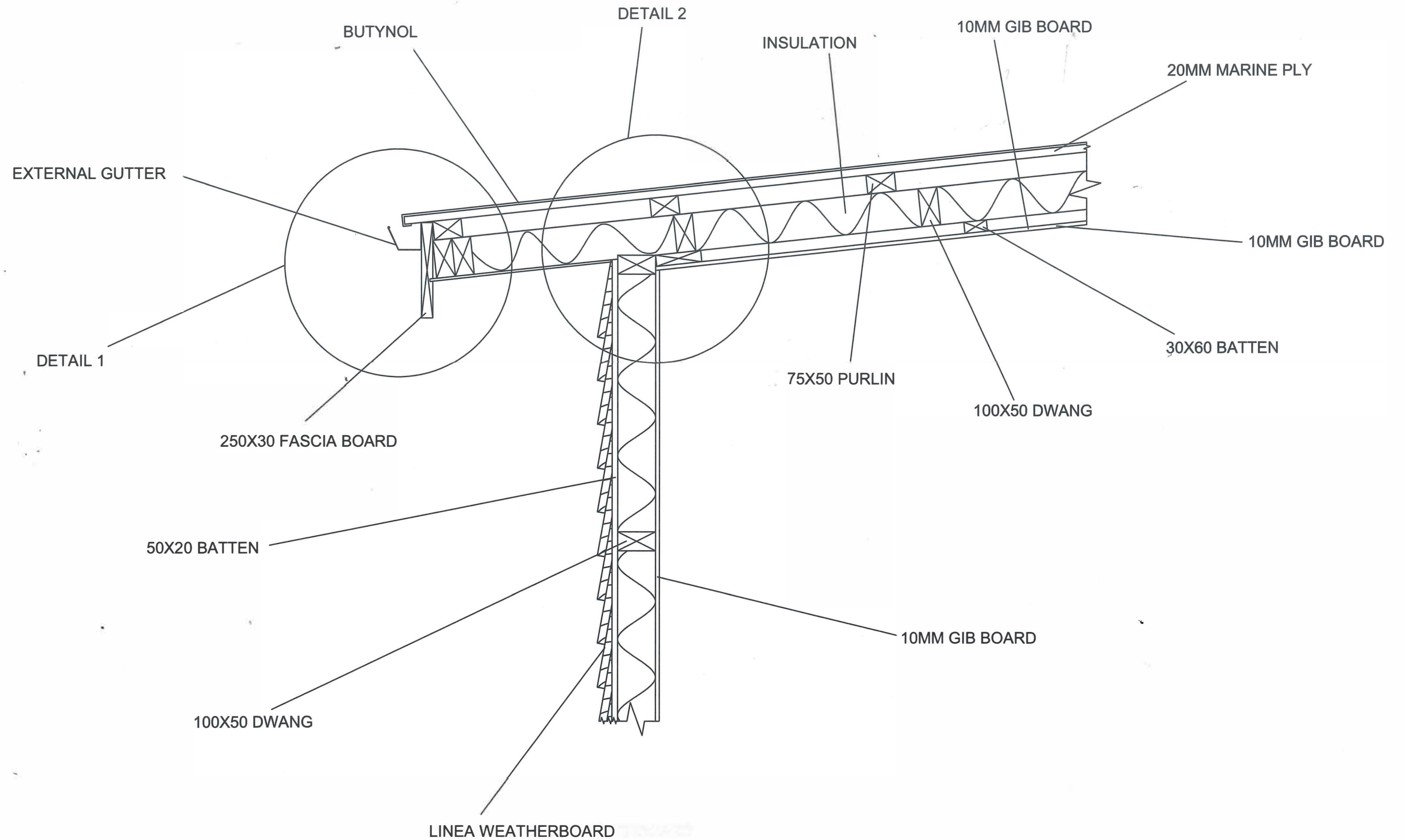
## COTTAGE CROSS SECTION AA

A3

SCALE 1:50

DATE 25/08/17

SHEET 5



TITLE

COTTAGE ROOF DETAIL 1 AND 2

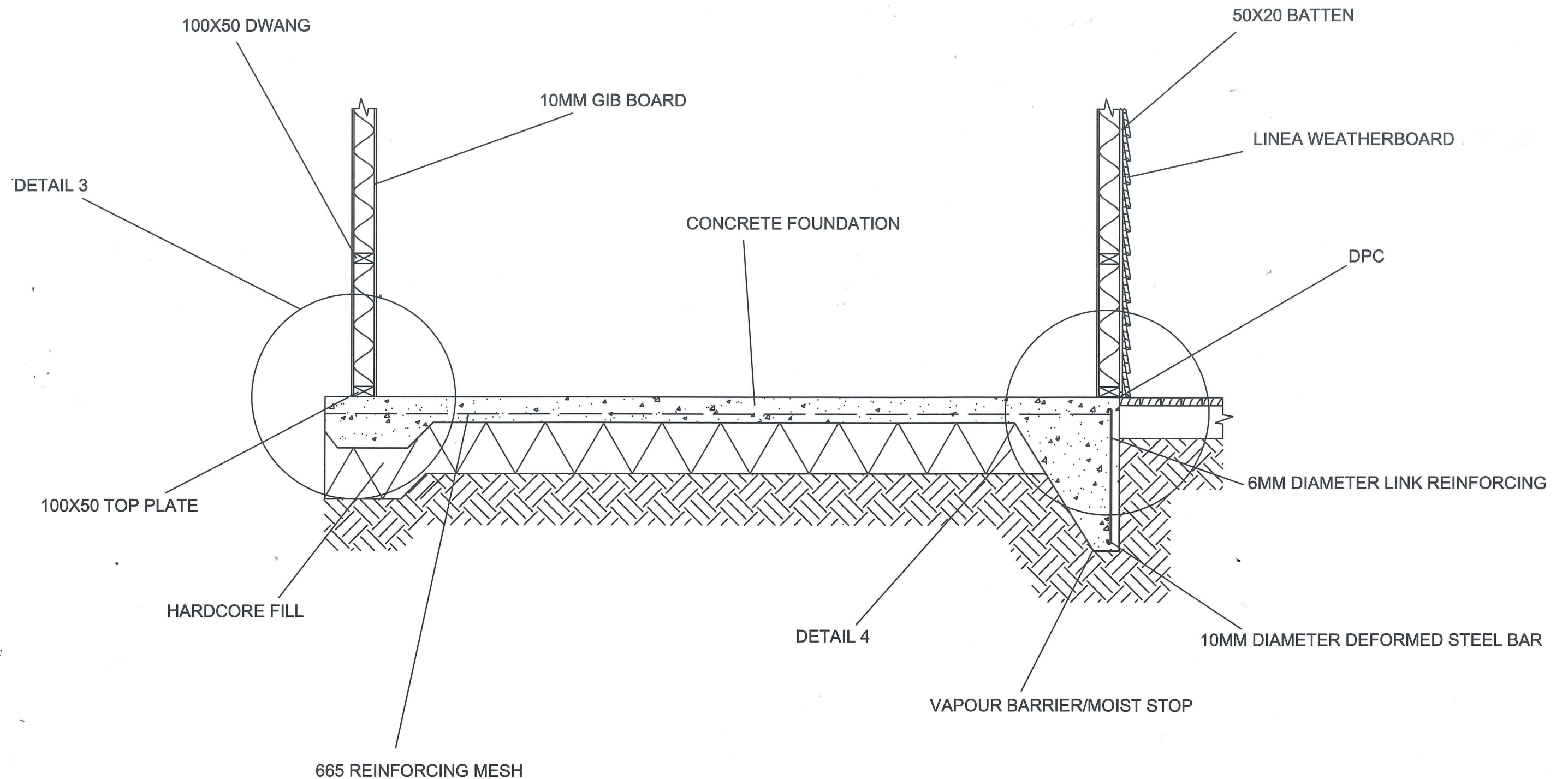
A3

SCALE 1:10

DATE 25/08/17

SHEET 6





TITLE

COTTAGE FOUNDATION DETAIL 3 AND 4

A3

SCALE 1:20

DATE 25/08/17

SHEET 7