

No part of the candidate's evidence in this exemplar material may be presented in an external assessment for the purpose of gaining an NZQA qualification or award.



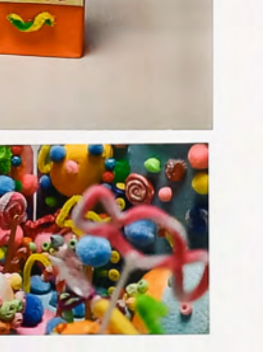
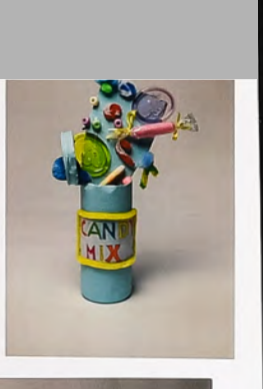
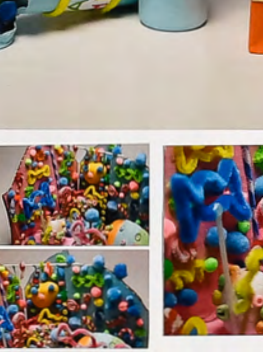
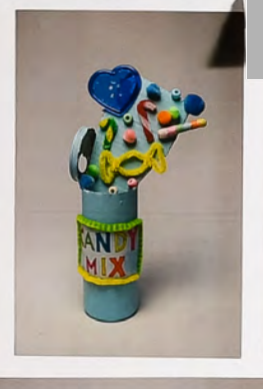
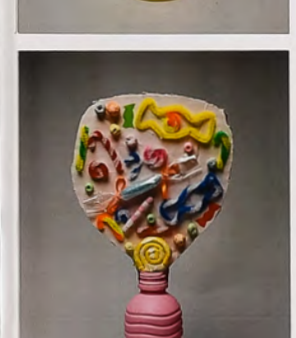
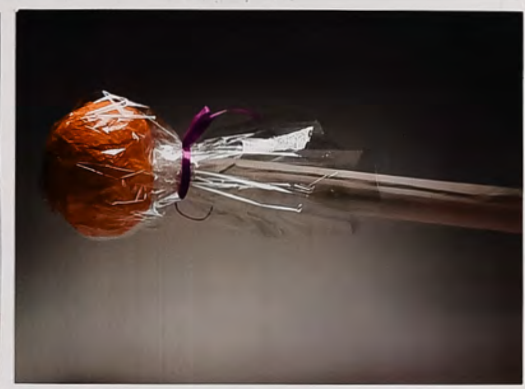
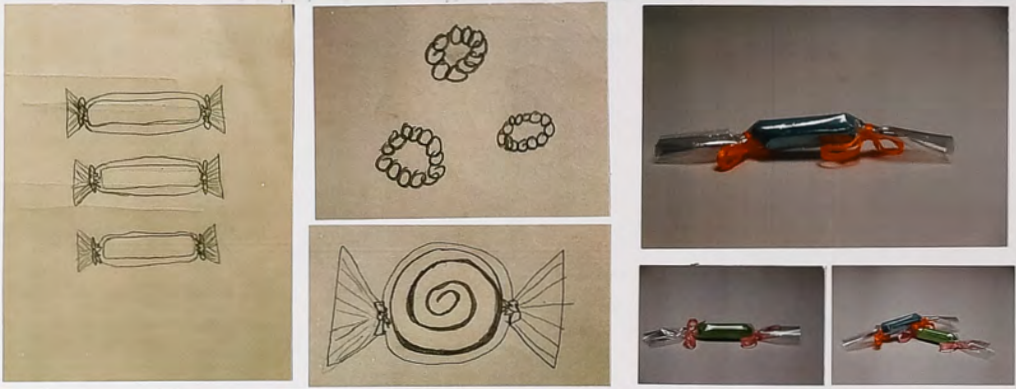
Level 3 Visual Arts 2023

91459 Produce a systematic body of work that integrates conventions and regenerates ideas within sculpture practice

EXEMPLAR

Achievement

TOTAL A



Achievement

Subject: Visual Arts – Sculpture

Standard: 91459

Marker commentary

This submission presents a body of thematically linked sculptural practice that explores the subject of confectionery. Traditional sculptural devices such as scale shift, material shift, and assemblage are used to investigate formal and narrative suggestions playfully. Replications of simple confectionery items are created, in real scale, from simple, readily available materials. The candidate then investigates larger-scale versions of wrapped lollies and lollipops which celebrate the colour and visual appeal of these items. Humour is deployed in these works as the absurd size of these lollies becomes clear when human-scale is included in the photo documentation. The candidate then creates small-scale colourful objects which investigate the formal properties of the subject in a lively and engaging manner. New materials such as polystyrene and coloured pipe cleaners are introduced to regenerate ideas of a narrative aligned with the confectionery theme. The suggestion of an explosion of candy is investigated in a cartoon-like manner that references the established practice of Tony Cragg's or Tom Friedman's colourful assemblage works from the early 2000's. The submission builds in intensity and detail that regenerates ideas linked to an explosive invasion of colourful confectionery beyond the control of its human maker.

For this submission to be awarded Merit, it would have needed to investigate further scale or material shifts in the context of a vivid colour world or candy takeover. It would have benefitted from an examination of specific sculptural conventions that engage with colour and its relationship to form and surface. The highly coloured landscape installations of Tanya Schultz would have helped this candidate understand the appropriate conventions to investigate within this area of sculptural practice.