

No part of the candidate's evidence in this exemplar material may be presented in an external assessment for the purpose of gaining an NZQA qualification or award.



Mana Tohu Mātauranga o Aotearoa
New Zealand Qualifications Authority

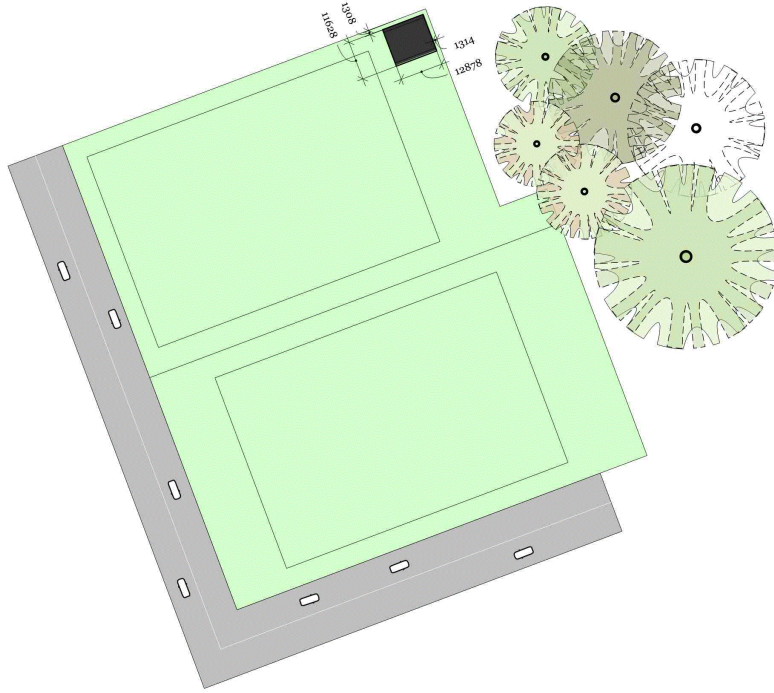
Level 3 Design and Visual Communication 2023

91631 Produce working drawings to communicate
production details for a complex design

EXEMPLAR

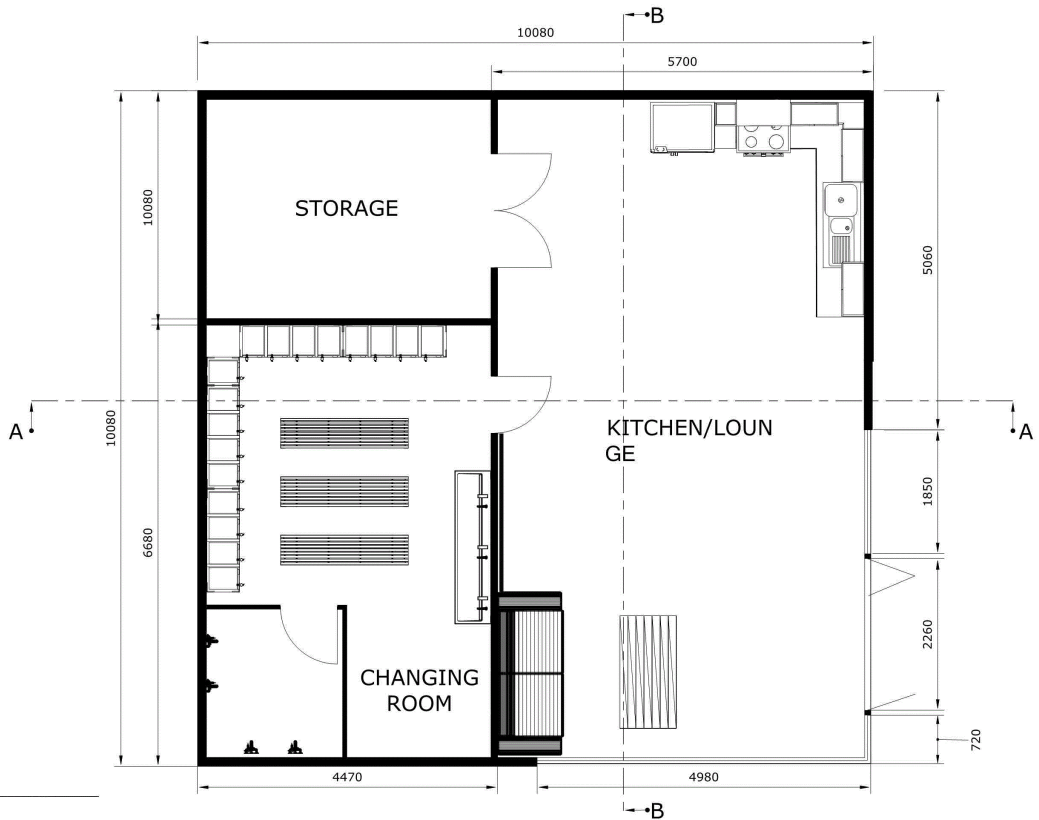
Achievement

TOTAL **A**



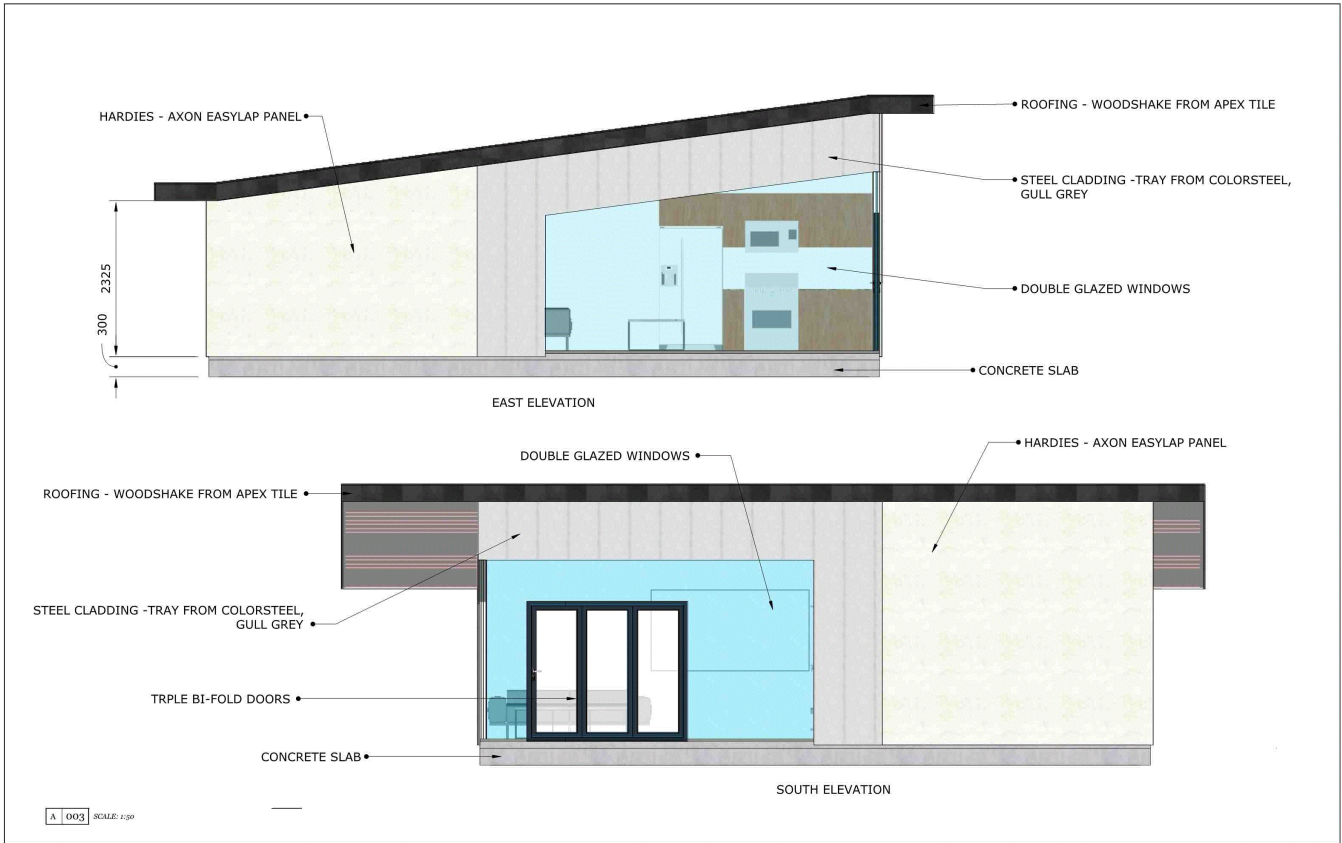
A 001 SCALE: 1:1000

SITE PLAN	SPORTS PAVILION	SCALE	1:1000	A 1
		DATE	ALL DIMENSIONS IN MILLIMETERS	

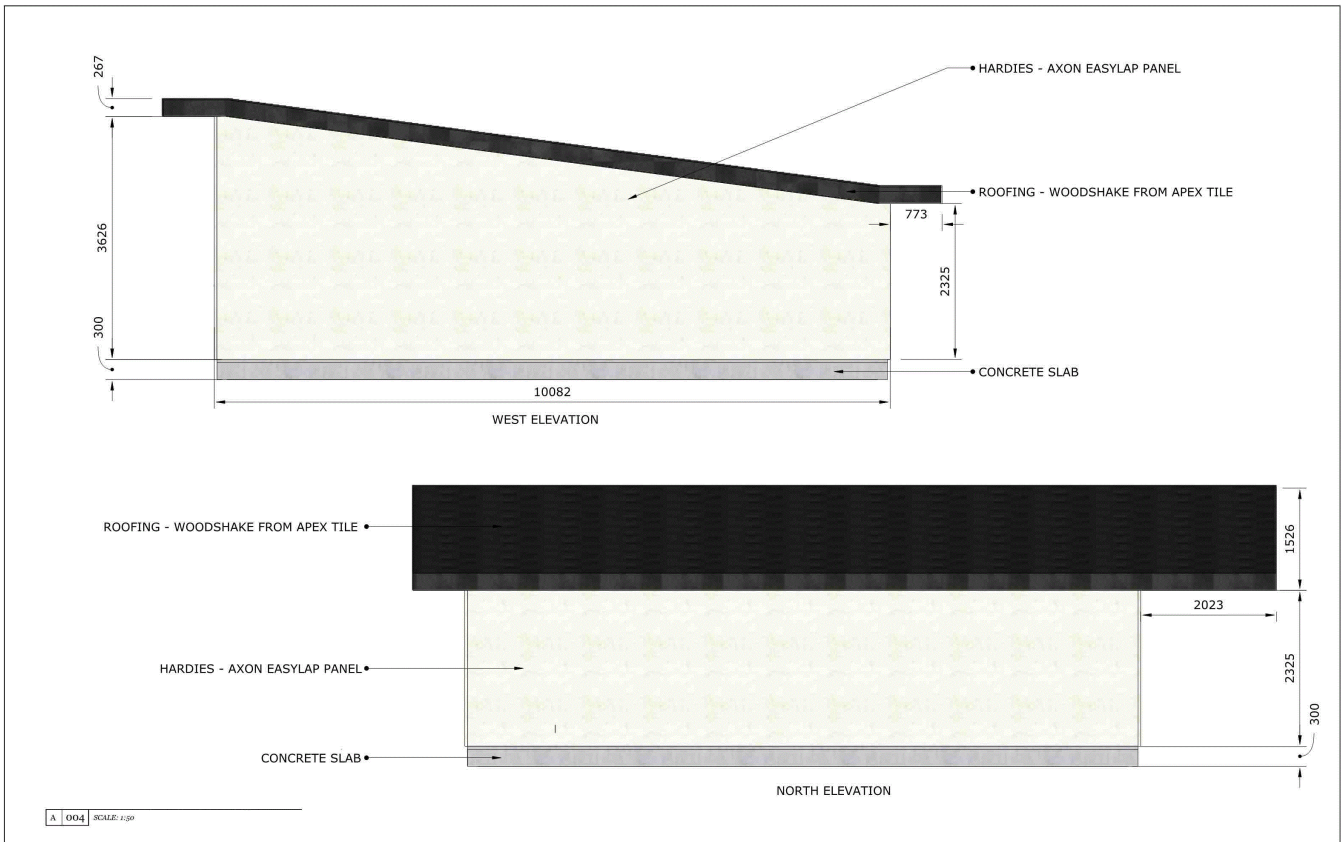


A 002 SCALE: 1:50

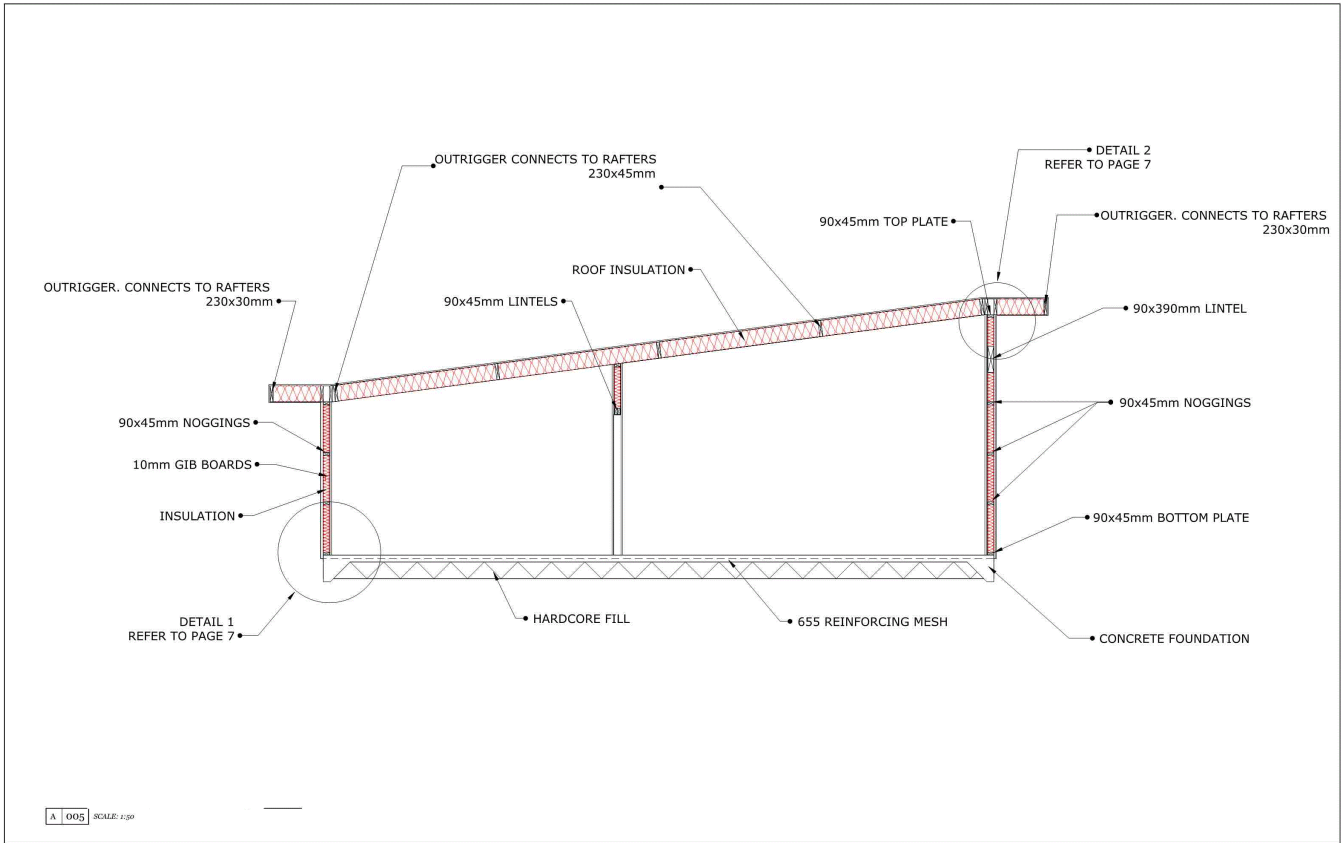
FLOOR PLAN	SPORTS PAVILION	SCALE	1:50	A 2
		DATE	ALL DIMENSIONS IN MILLIMETERS	



SOUTH AND EAST ELEVATIONS	SPORTS PAVILION	SCALE	1:50	A 3
		DATE	ALL DIMENSIONS IN MILLIMETERS	

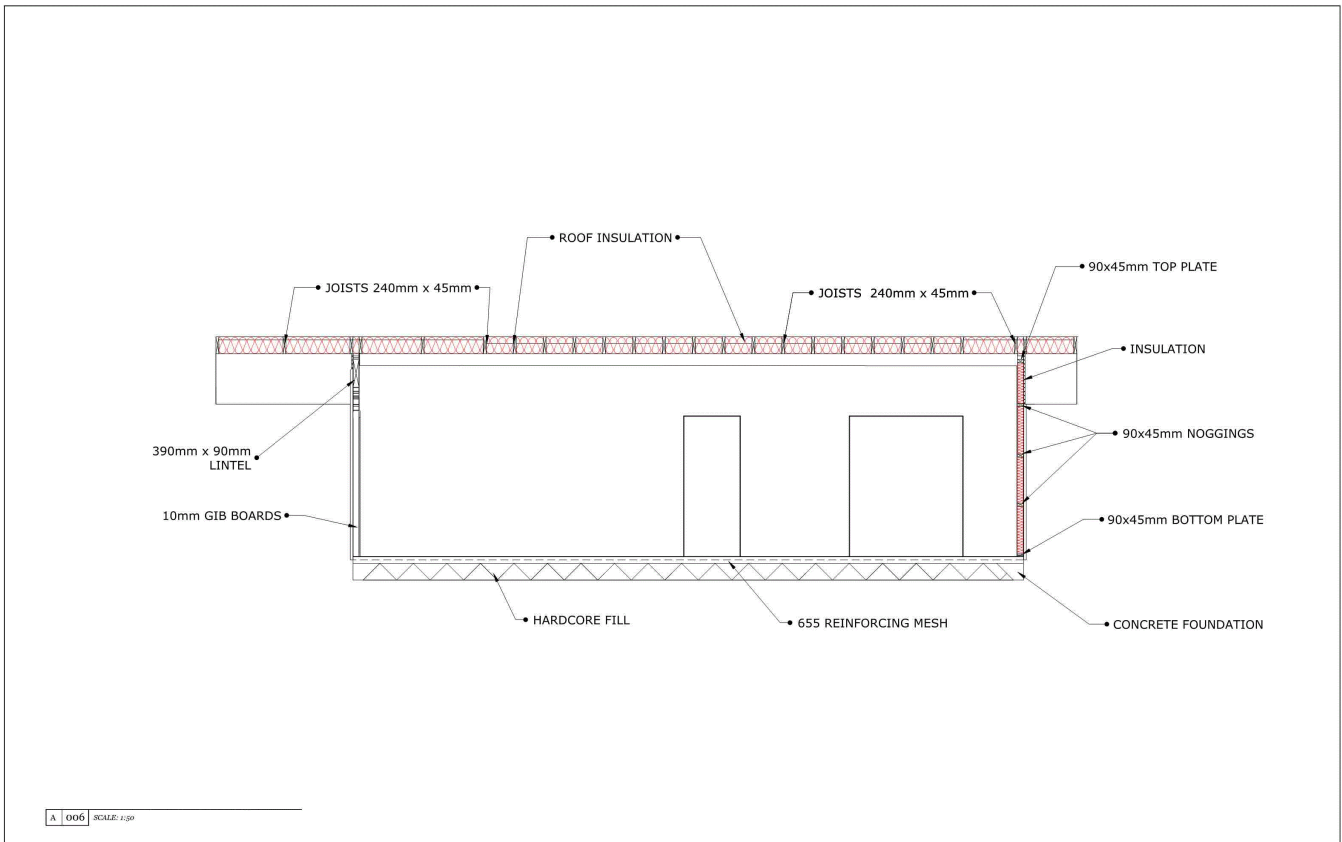


NORTH AND WEST ELEVATIONS	SPORTS PAVILION	SCALE	1:50	A 4
		DATE	ALL DIMENSIONS IN MILLIMETERS	



A 005 SCALE: 1:50

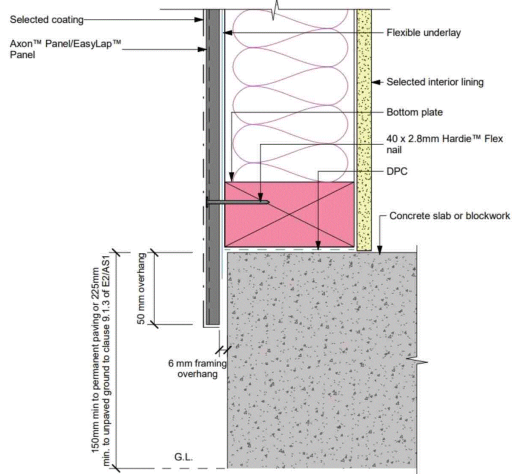
SECTION A - A	SPORTS PAVILION	SCALE	1:50	A 5
		DATE	ALL DIMENSIONS IN MILLIMETERS	



A 006 SCALE: 1:50

SECTION B - B	SPORTS PAVILION	SCALE	1:50	A 6
		DATE	ALL DIMENSIONS IN MILLIMETERS	

Figure 3: Direct fixed foundation detail

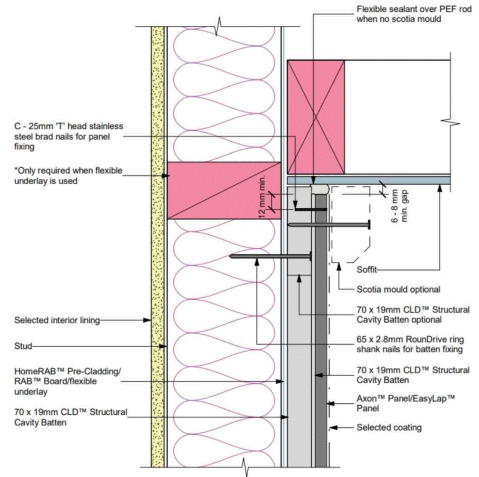


DETAIL 1

A 007 SCALE: NTS

DETAIL 2

Figure 35: Soffit detail



DETAIL VIEWS 1 AND 2

SPORTS PAVILION

SCALE

NTS

DATE

ALL DIMENSIONS IN MILLIMETERS

7

A

Achievement

Subject: Design and Visual Communication

Standard: 91631

Marker commentary

Commentary: This submission is assessed at Achievement.

It shows a set of related complex plans for a sports pavilion and has been produced using CAD.

This includes (helping it meet this grade):

- CAD drawings showing precision and accuracy
- a dimensioned floor plan with north point symbol, room space information and correct use of labelling
- a set of corresponding elevations matching the north point orientation shown on the floor plan
- two sectional views showing good detail and matching the orientation indicated on the plan
- the correct use of drawing conventions such as recognised scales, dimensioning, and symbols
- call-out information indicated on the cross sections explaining materials.

Even though this submission has indicated two details on Section AA, the corresponding enlarged detail drawings do not show as much as is indicated.

No part of the candidate's evidence in this exemplar material may be presented in an external assessment for the purpose of gaining an NZQA qualification or award.



Mana Tohu Mātauranga o Aotearoa
New Zealand Qualifications Authority

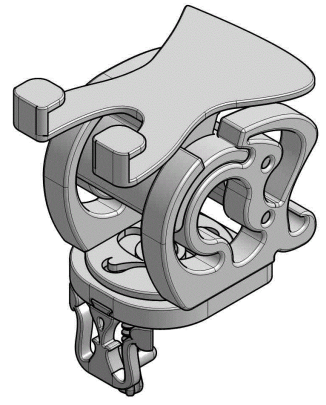
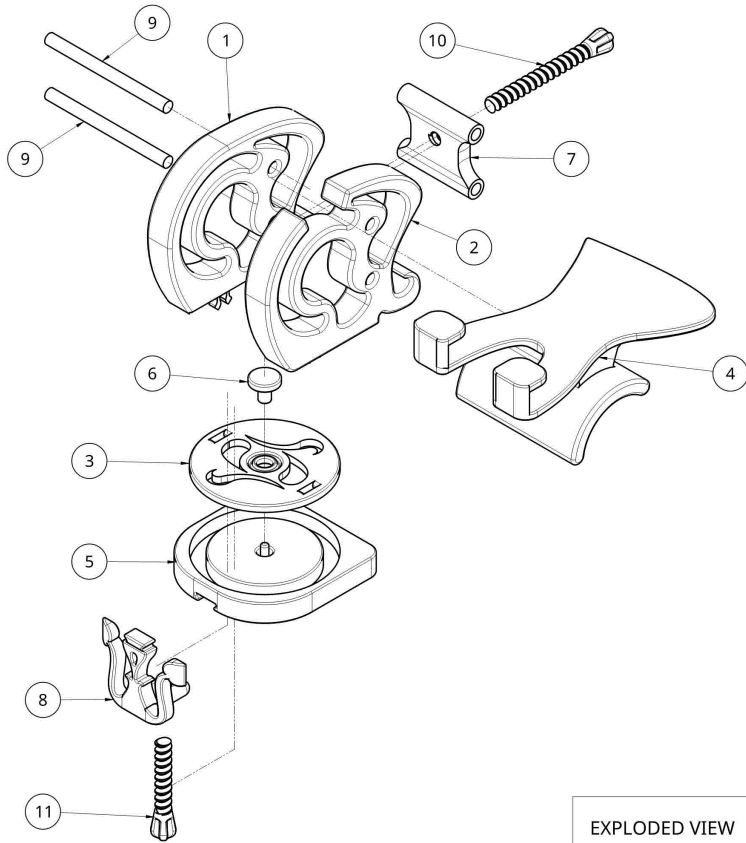
Level 3 Design and Visual Communication 2023

91631 Produce working drawings to communicate
production details for a complex design

EXEMPLAR

Achievement

TOTAL **A**

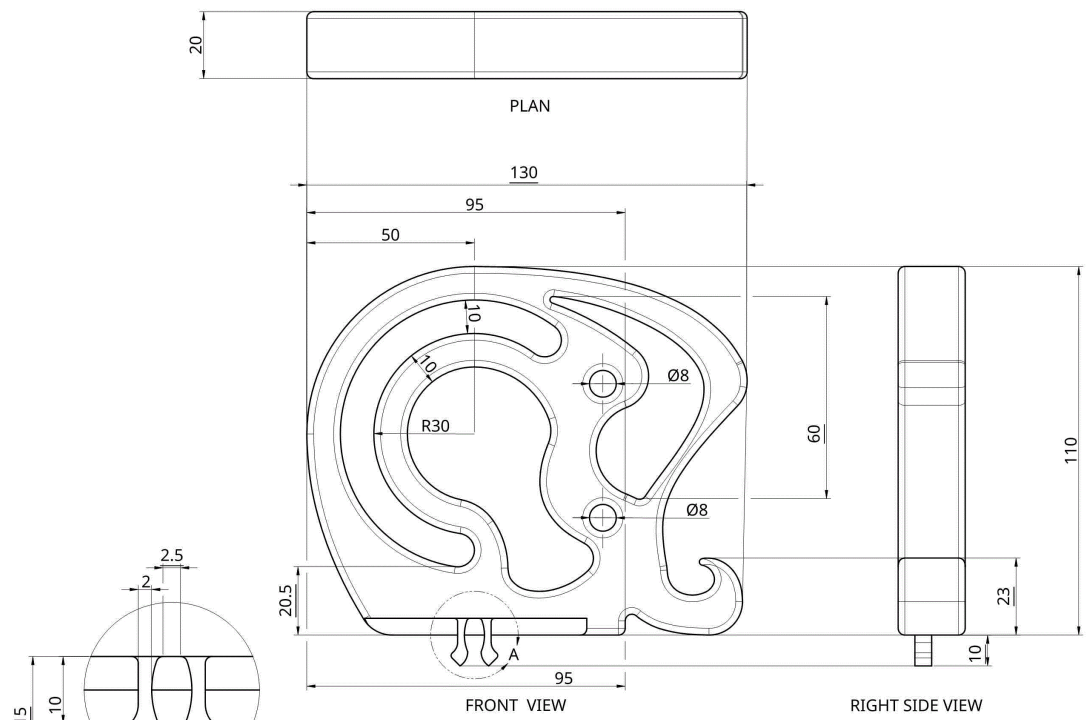


SCALE 1:2

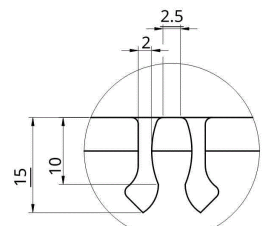
Item	Quantity	Description
1	1	Side Piece A
2	1	Side Piece B
3	1	Swivel
4	1	Phone Support
5	1	Base
6	1	Swivel Pin
7	1	Hinge Bracket
8	1	Clamp Frame
9	2	Hinge Pins
10	1	Stabiliser Screw
11	1	Clamp Screw

EXPLODED VIEW	SCALE 1:2 UNLESS OTHERWISE STATED	
DRAWN BY-	SHEET- 1/11	ALL DIMENSIONS IN MM UNLESS OTHERWISE STATED

ALL FILLETS 1MM
UNLESS OTHERWISE STATED



ISOMETRIC VIEW
SCALE 1:2

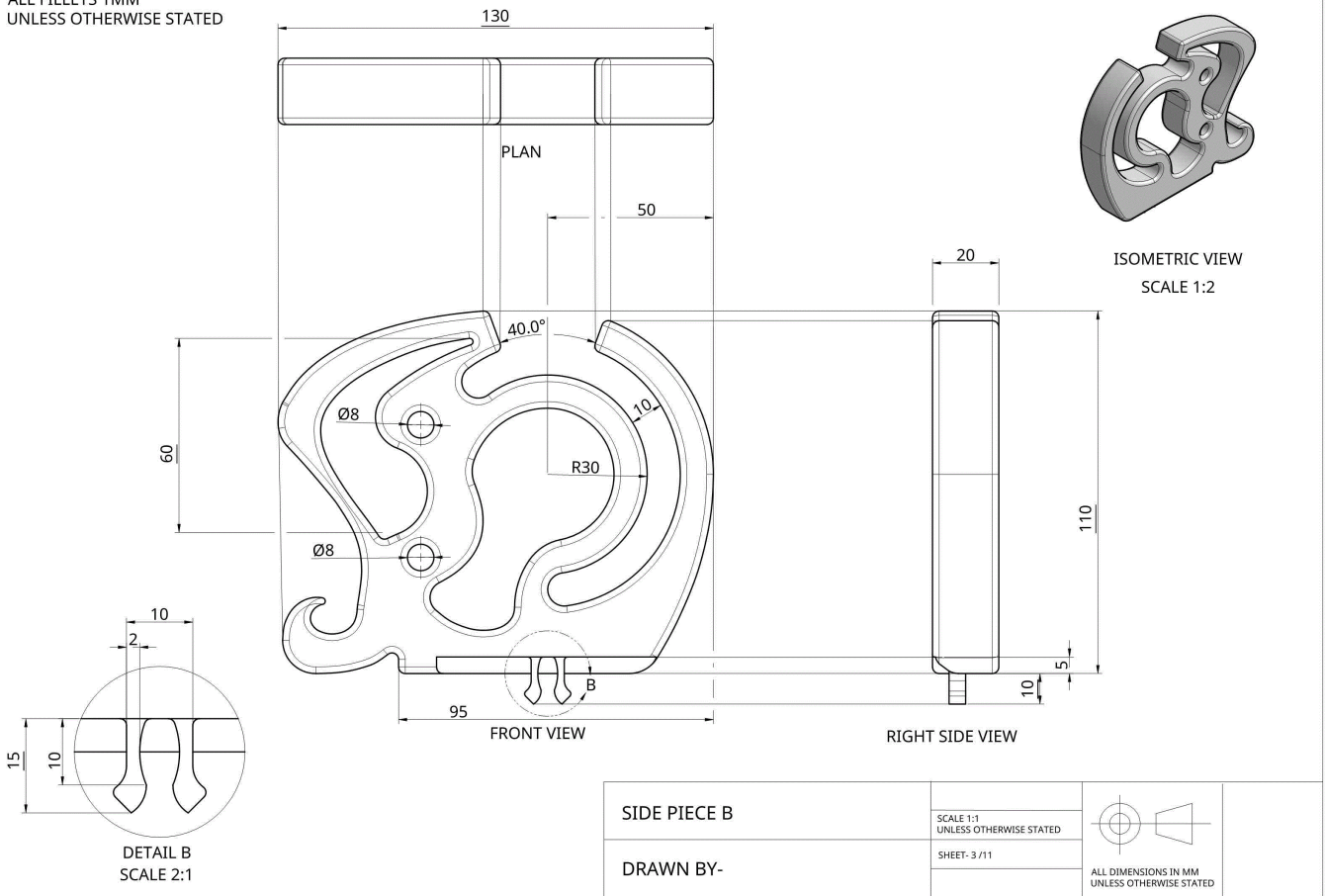


DETAIL A
SCALE 2:1

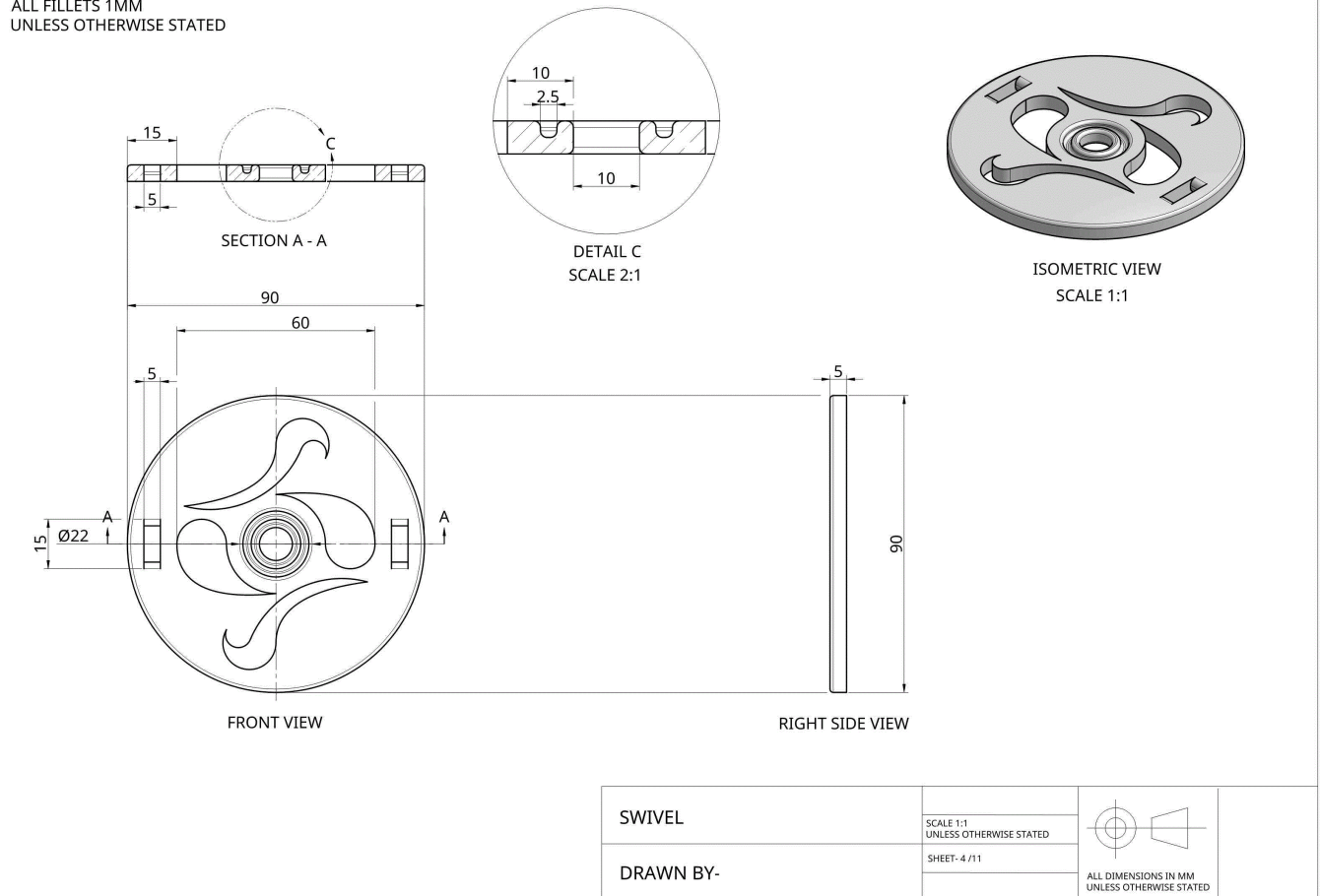
SIDE PIECE A	SCALE 1:1 UNLESS OTHERWISE STATED	
DRAWN BY-	SHEET- 2/11	

ALL DIMENSIONS IN MM
UNLESS OTHERWISE STATED

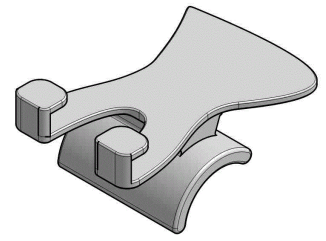
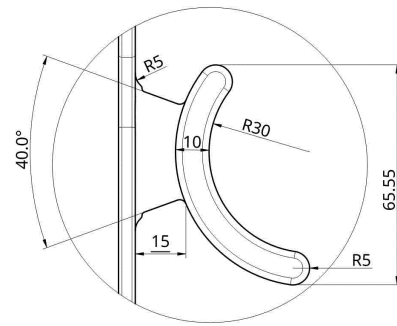
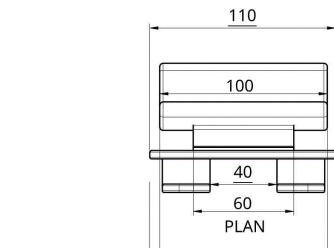
ALL FILLETS 1MM
UNLESS OTHERWISE STATED



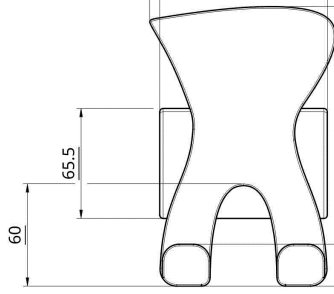
ALL FILLETS 1MM
UNLESS OTHERWISE STATED



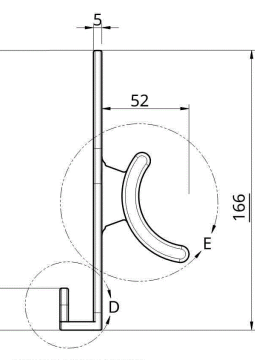
ALL FILLETS 1MM
UNLESS OTHERWISE STATED



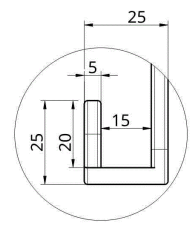
ISOMETRIC VIEW
SCALE 1:2



FRONT VIEW



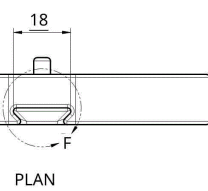
RIGHT SIDE VIEW



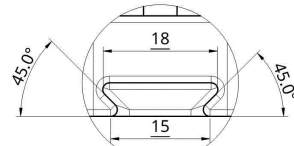
DETAIL D
SCALE 1:1

PHONE SUPPORT	SCALE 1:2 UNLESS OTHERWISE STATED		ALL DIMENSIONS IN MM UNLESS OTHERWISE STATED
DRAWN BY-	SHEET- 5 /11		

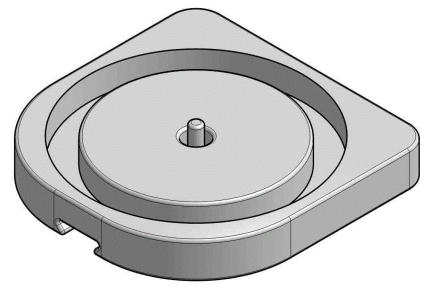
ALL FILLETS 1MM
UNLESS OTHERWISE STATED



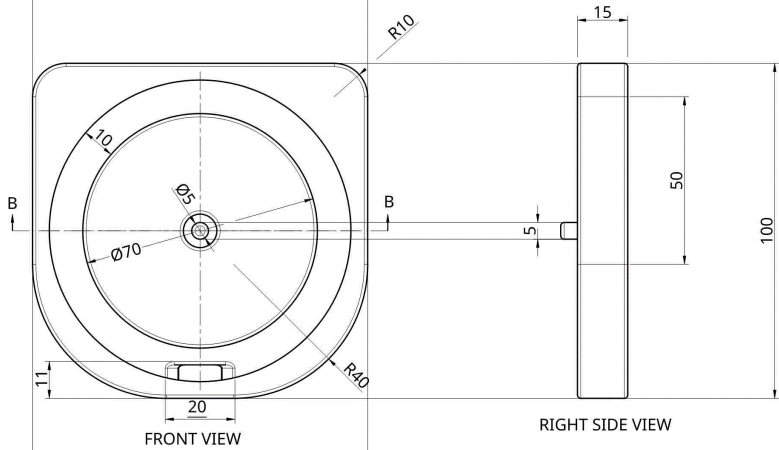
PLAN



DETAIL F
SCALE 2:1

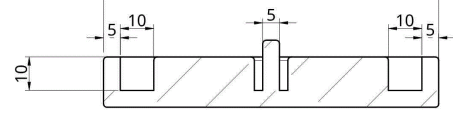


ISOMETRIC VIEW
SCALE 1:1



FRONT VIEW

RIGHT SIDE VIEW



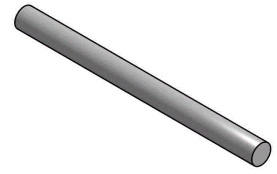
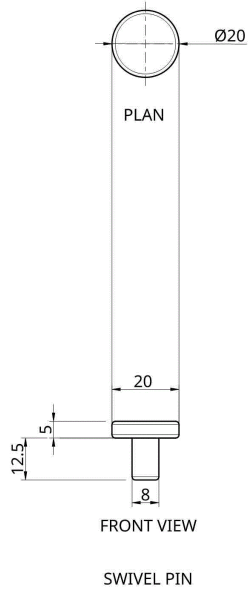
SECTION B - B

BASE	SCALE 1:1 UNLESS OTHERWISE STATED		ALL DIMENSIONS IN MM UNLESS OTHERWISE STATED
DRAWN BY-	SHEET- 6 /11		

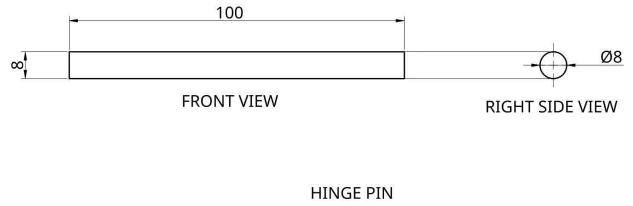
ALL FILLETS 1MM
UNLESS OTHERWISE STATED



ISOMETRIC VIEW
SCALE 1:1



ISOMETRIC VIEW
SCALE 1:1

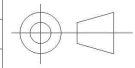


SWIVEL PIN AND HINGE PIN

DRAWN BY-

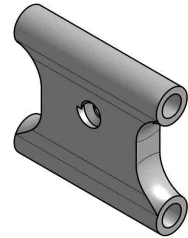
SCALE 1:1
UNLESS OTHERWISE STATED

SHEET- 7 /11

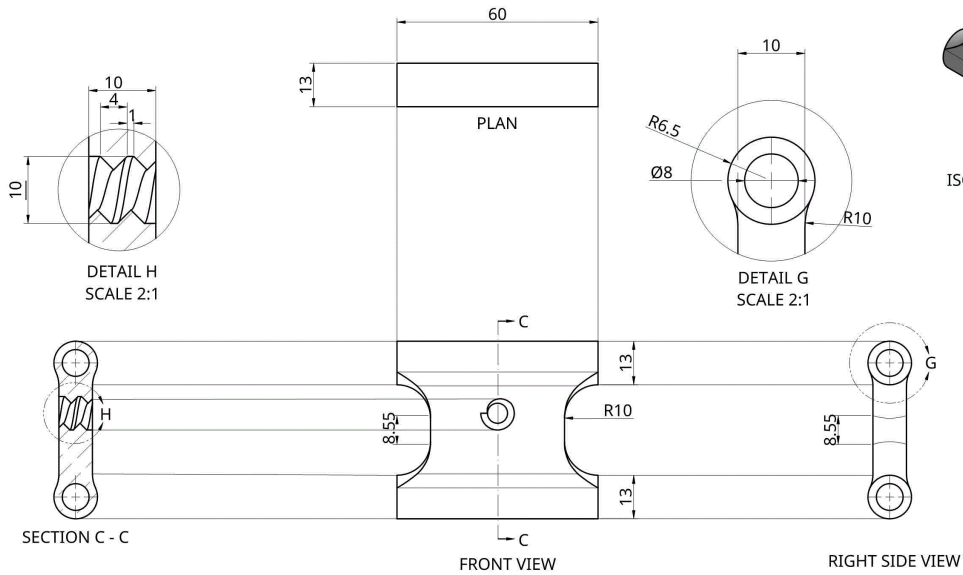


ALL DIMENSIONS IN MM
UNLESS OTHERWISE STATED

ALL FILLETS 1MM
UNLESS OTHERWISE STATED



ISOMETRIC VIEW
SCALE 1:1

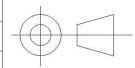


HINGE BRACKET

DRAWN BY-

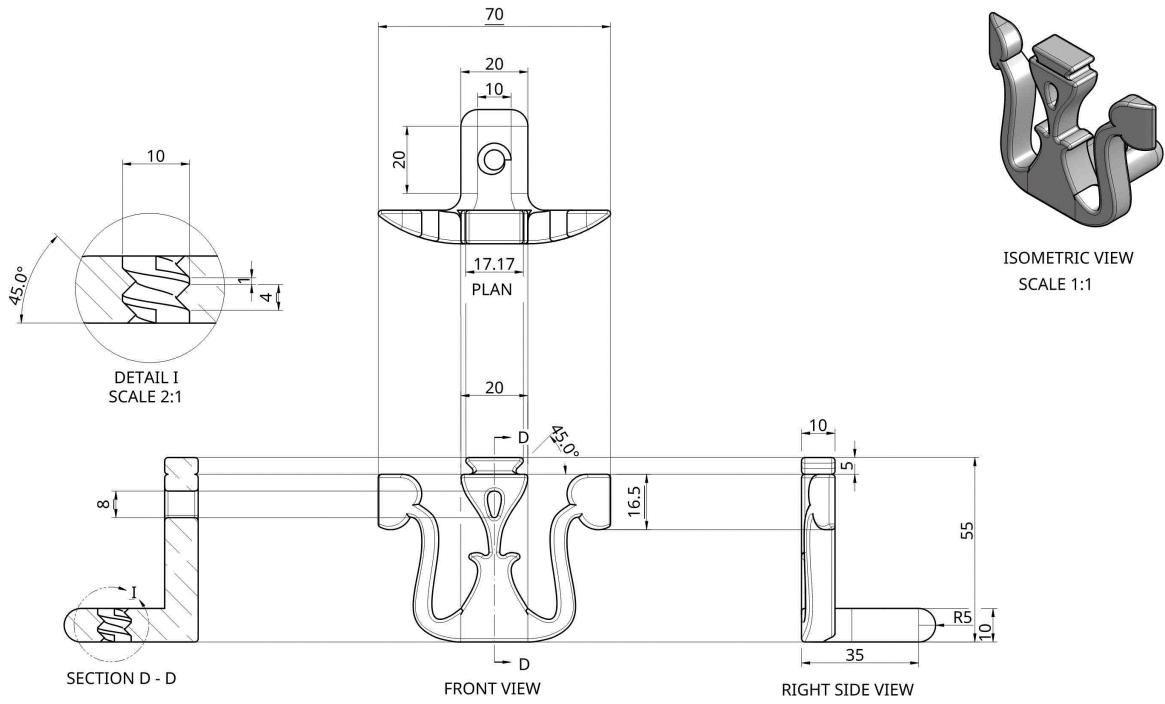
SCALE 1:1
UNLESS OTHERWISE STATED

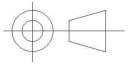
SHEET- 8 /11



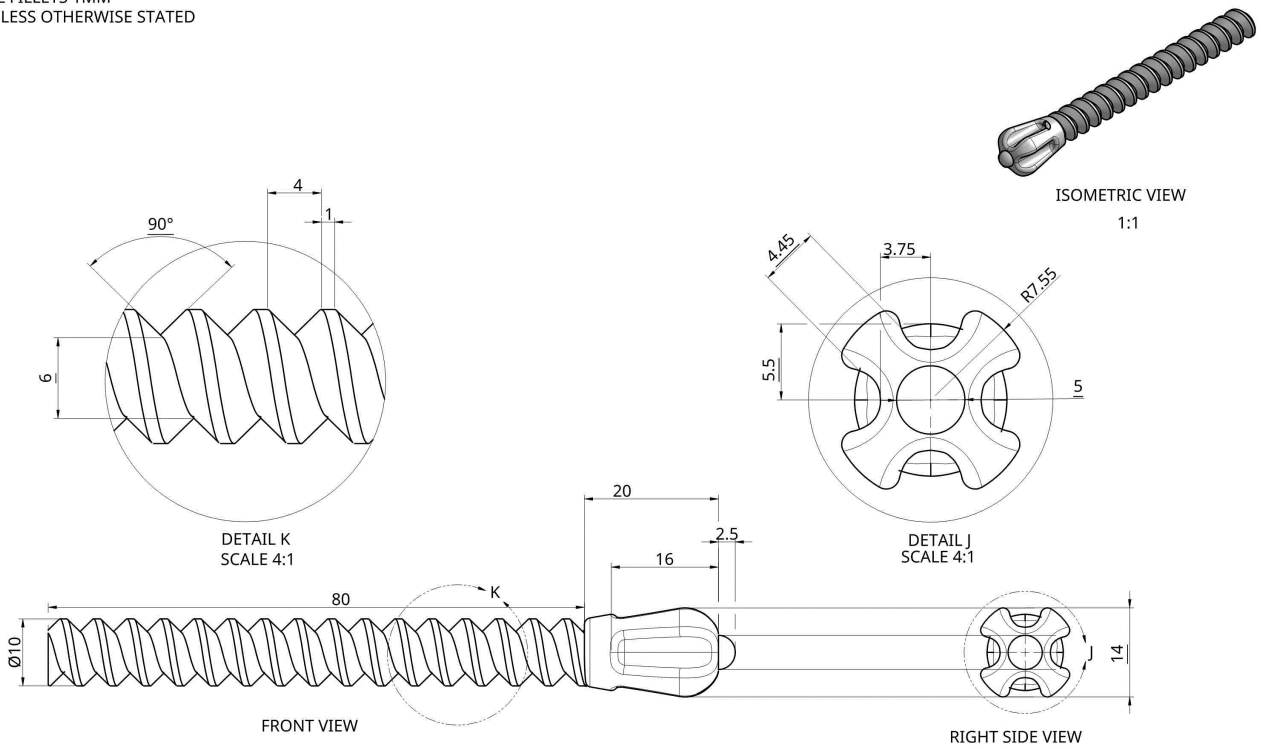
ALL DIMENSIONS IN MM
UNLESS OTHERWISE STATED

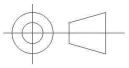
ALL FILLETS 1MM
UNLESS OTHERWISE STATED



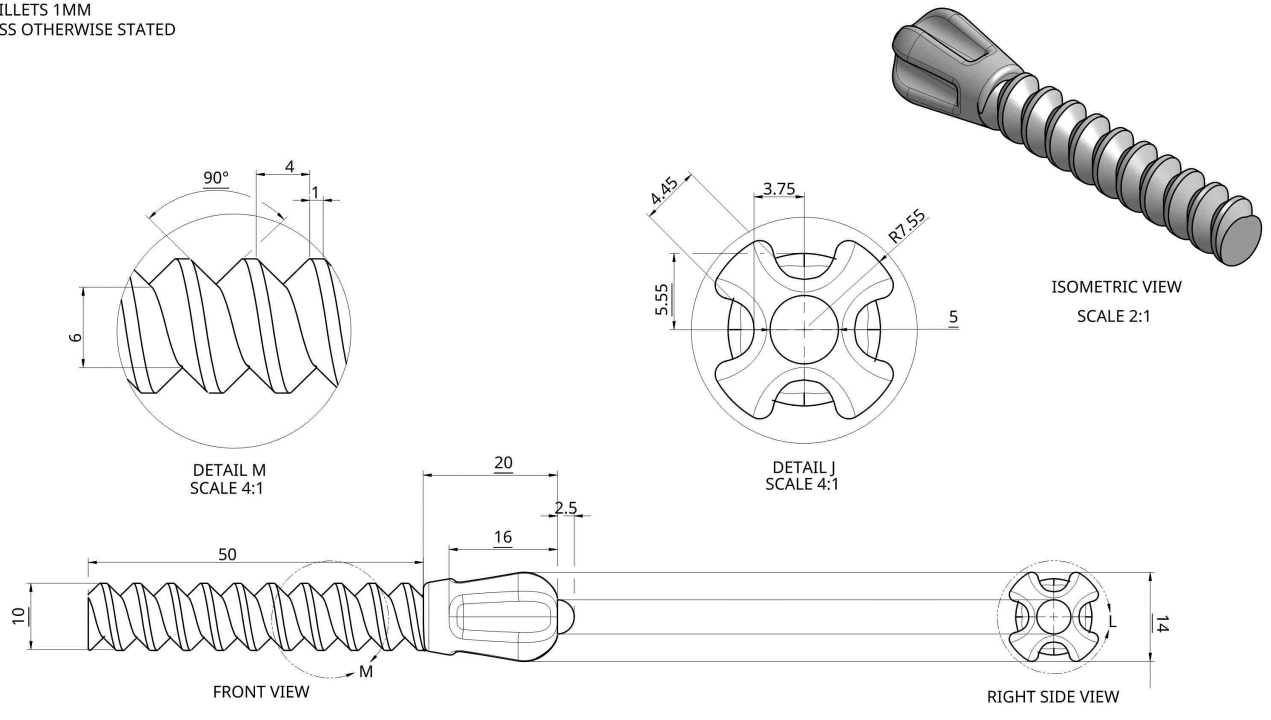
CLAMP FRAME	SCALE 1:1 UNLESS OTHERWISE STATED	 ALL DIMENSIONS IN MM UNLESS OTHERWISE STATED
DRAWN BY-	SHEET- 9/11	

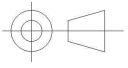
ALL FILLETS 1MM
UNLESS OTHERWISE STATED



STABILISER SCREW	SCALE 2:1 UNLESS OTHERWISE STATED	 ALL DIMENSIONS IN MM UNLESS OTHERWISE STATED
DRAWN BY-	SHEET- 10 /11	

ALL FILLETS 1MM
UNLESS OTHERWISE STATED



CLAMP SCREW	SCALE 2:1 UNLESS OTHERWISE STATED	
DRAWN BY:	SHEET- 11 /11	

ALL DIMENSIONS IN MM
UNLESS OTHERWISE STATED

Achievement

Subject: Design and Visual Communication

Standard: 91631

Marker commentary

This submission is assessed at High Achievement.

It shows a set of related complex plans for a product and has been produced using CAD.

This includes (helping it meet this grade):

- a set of related complex drawings of multiple components
- CAD drawings that help meet precision and accuracy
- the use of drawing conventions such recognised scales, dimensioning, and titling
- excellent use of exploded and assembly pictorial views to help explain constructional details
- orthographic views of each component with extensive dimensioning, cross section, and enlarged detail views.

Unfortunately, this submission has been let down by not actually stating what it is or what it is used for. Nor does it show the overall length, height, and width of the assembled product.