

No part of the candidate's evidence in this exemplar material may be presented in an external assessment for the purpose of gaining an NZQA qualification or award.



Mana Tohu Mātauranga o Aotearoa  
New Zealand Qualifications Authority

## Level 3 Design and Visual Communication 2023

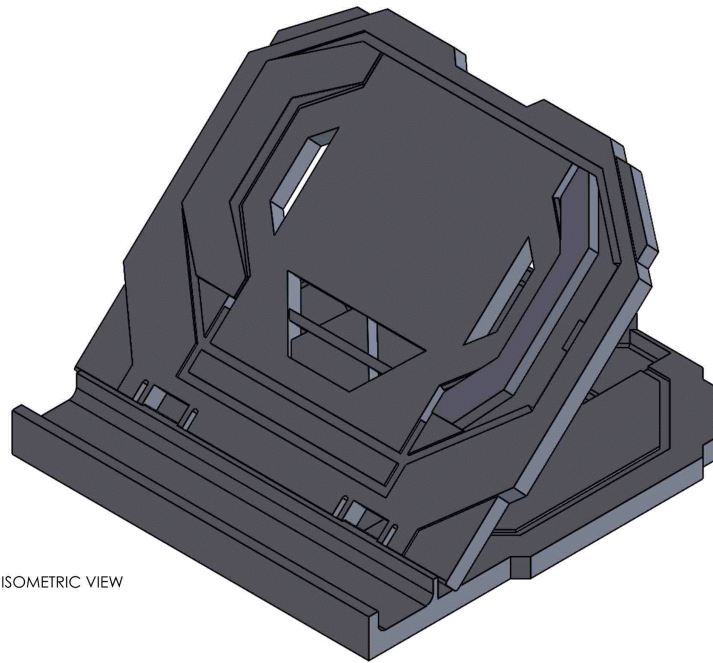
91631 Produce working drawings to communicate  
production details for a complex design

# EXEMPLAR

Merit

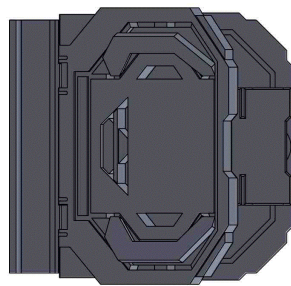
TOTAL **M**

0137855444

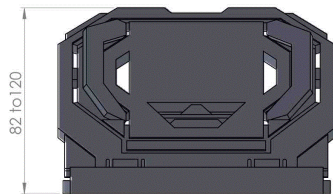


ISOMETRIC VIEW

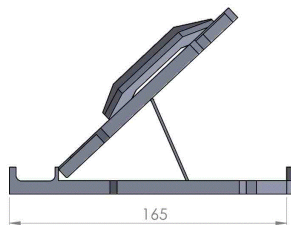
NAME	SIGNATURE	DATE	UNLESS OTHERWISE SPECIFIED, DIMENSIONS ARE IN MILLIMETERS	TITLE	A3
			DO NOT SCALE DRAWING	Folding Device Stand	
			SCALE:1:1	SHEET 1 OF 8	



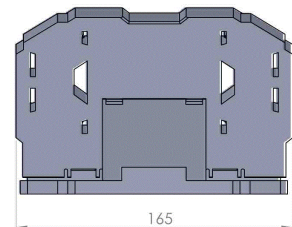
TOP VIEW



FRONT VIEW



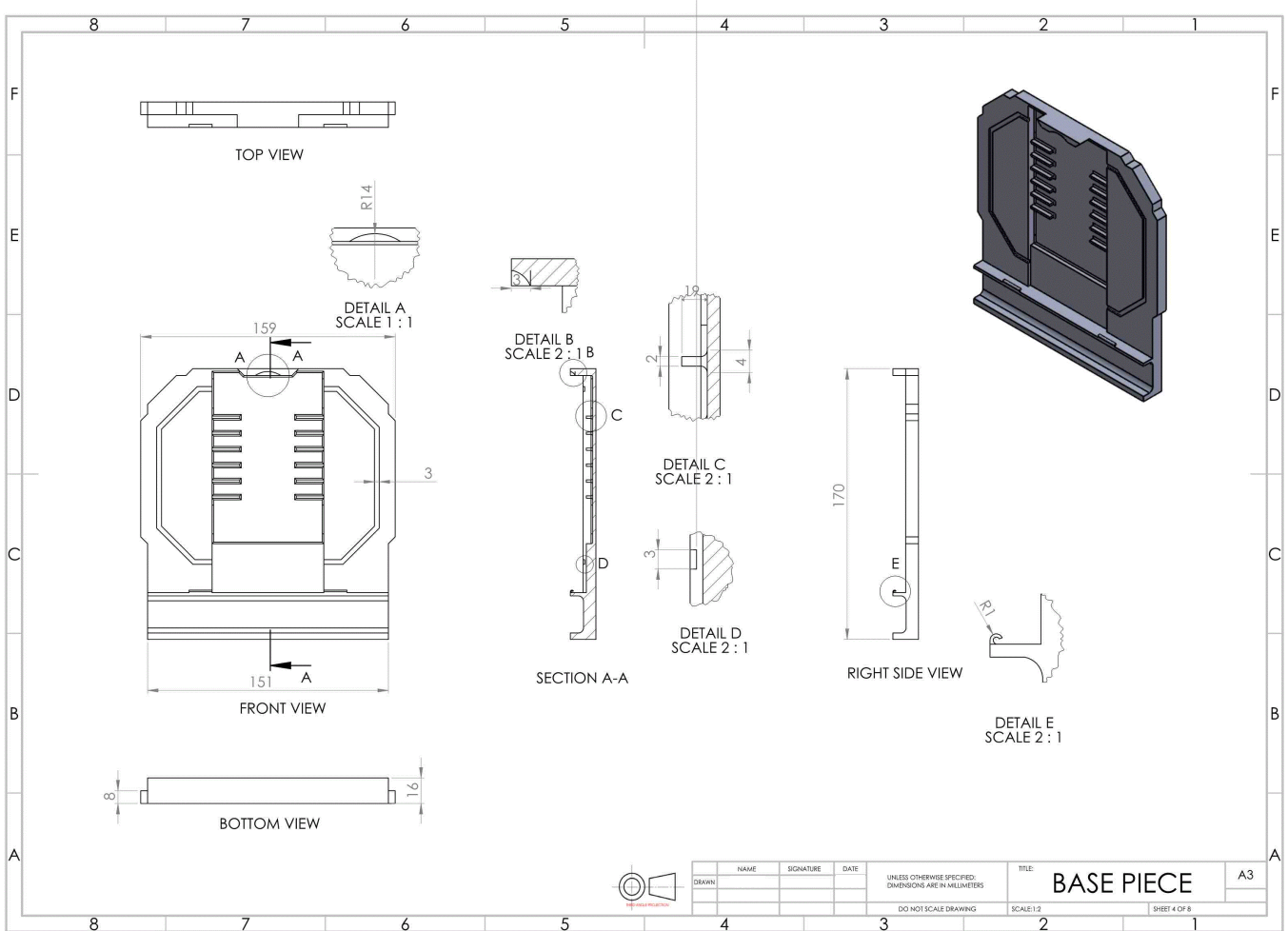
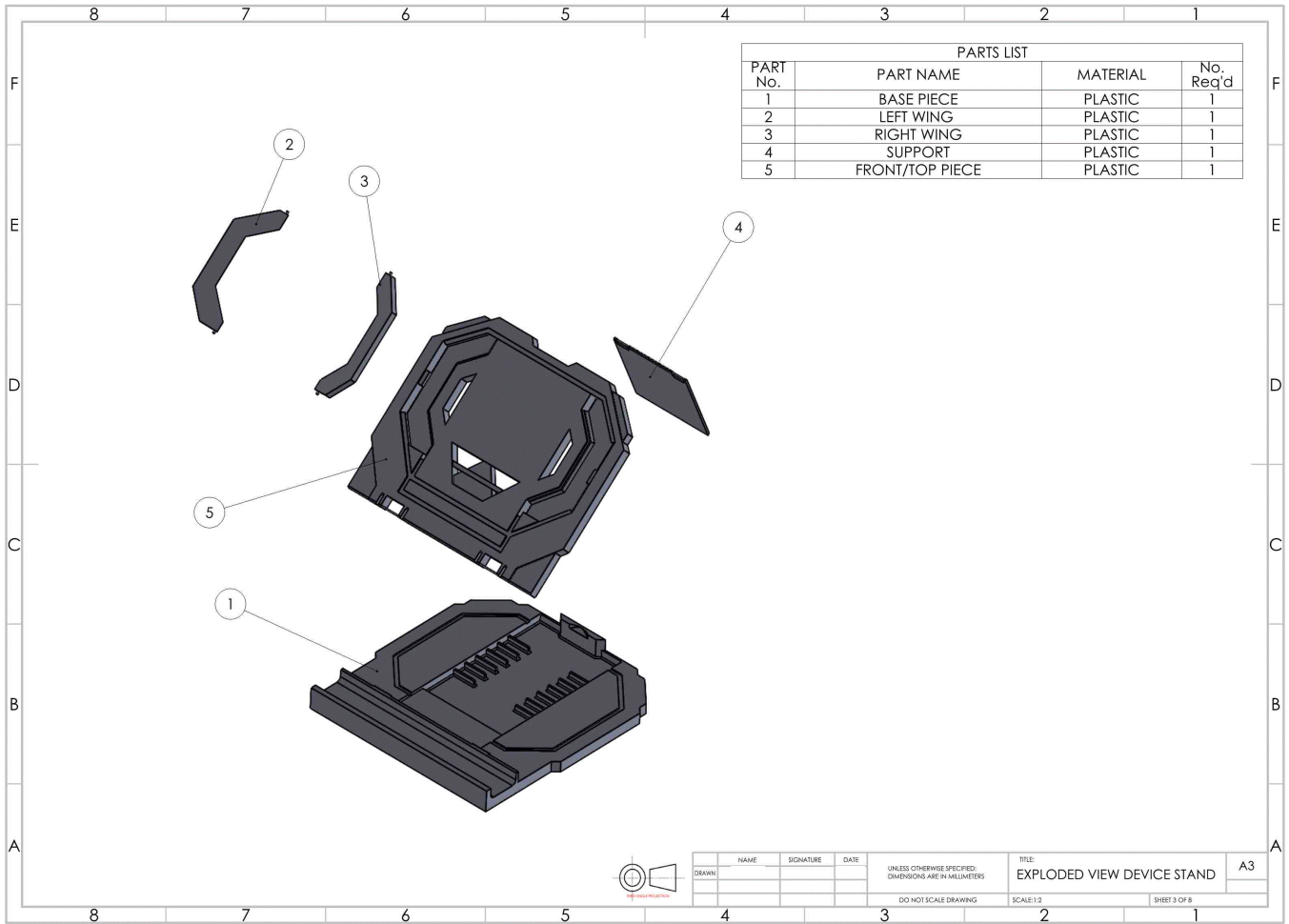
RIGHT VIEW

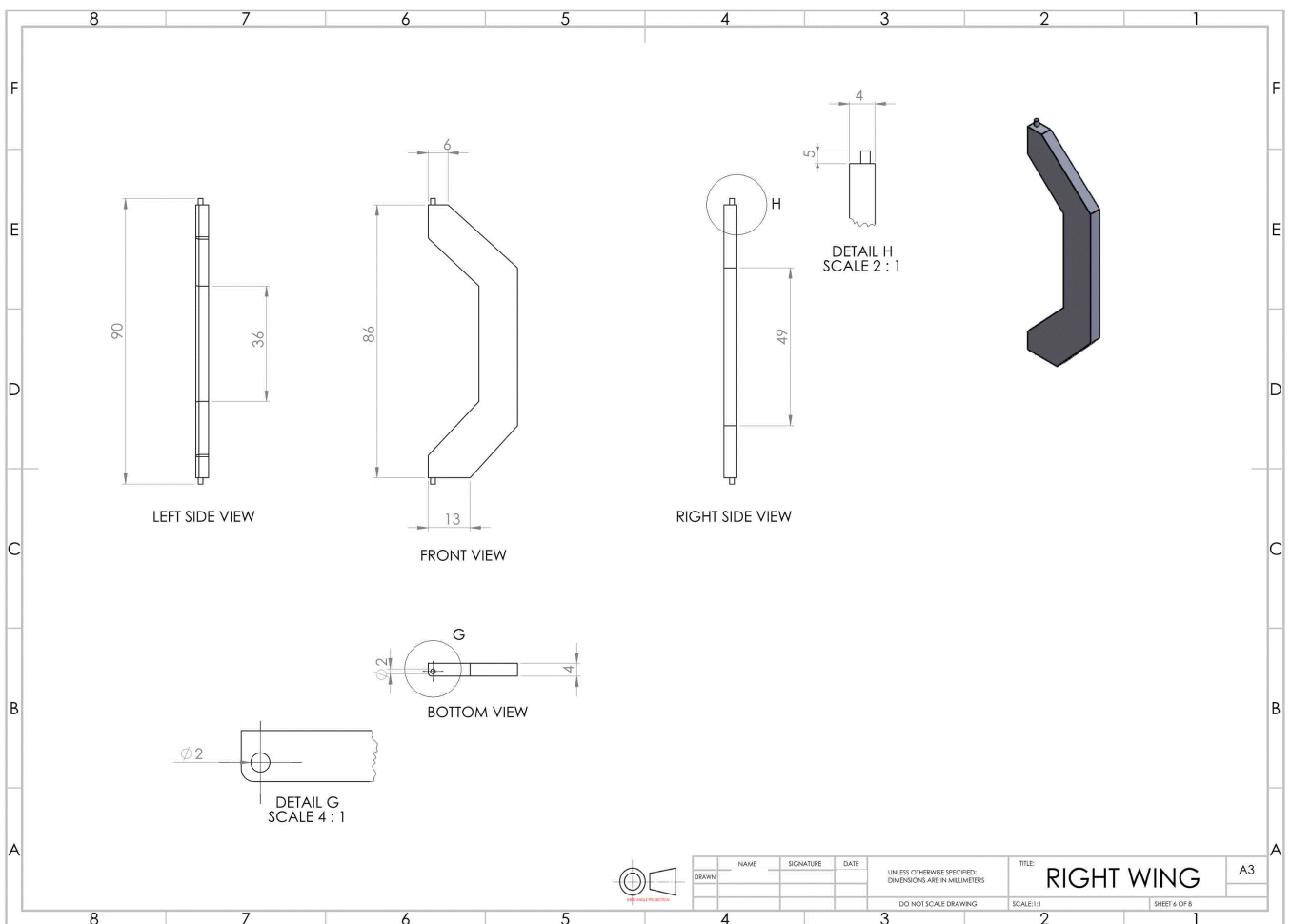
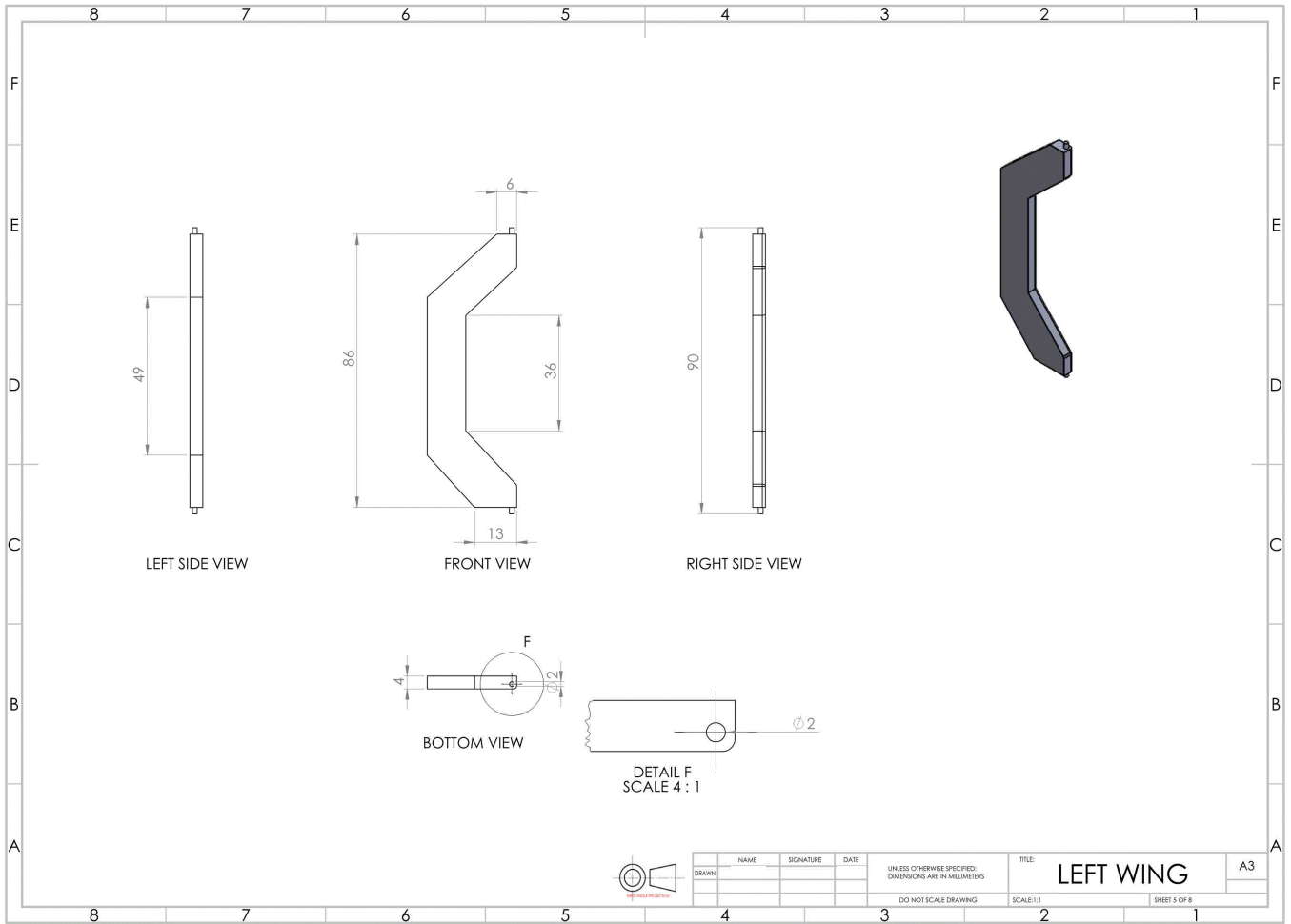


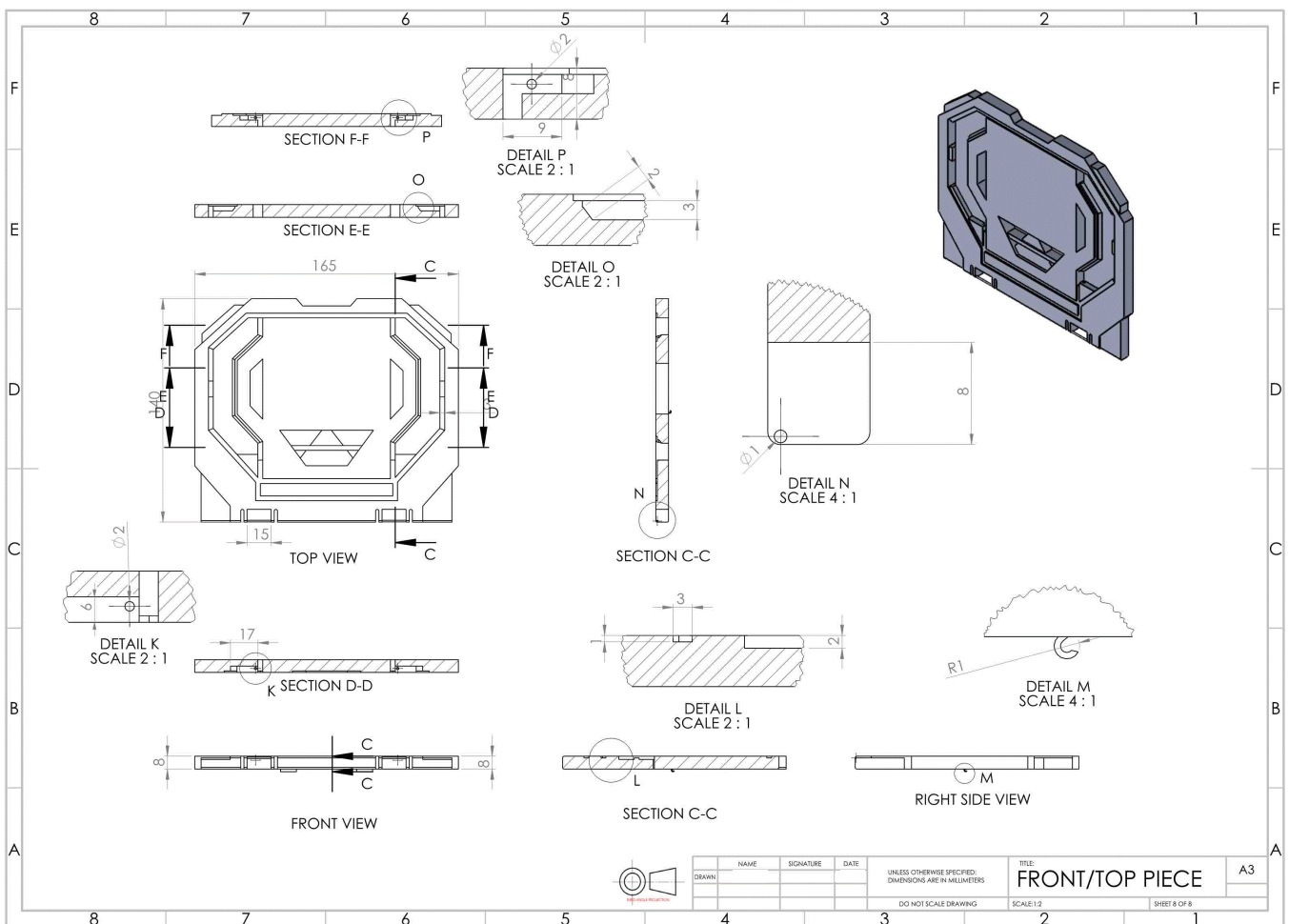
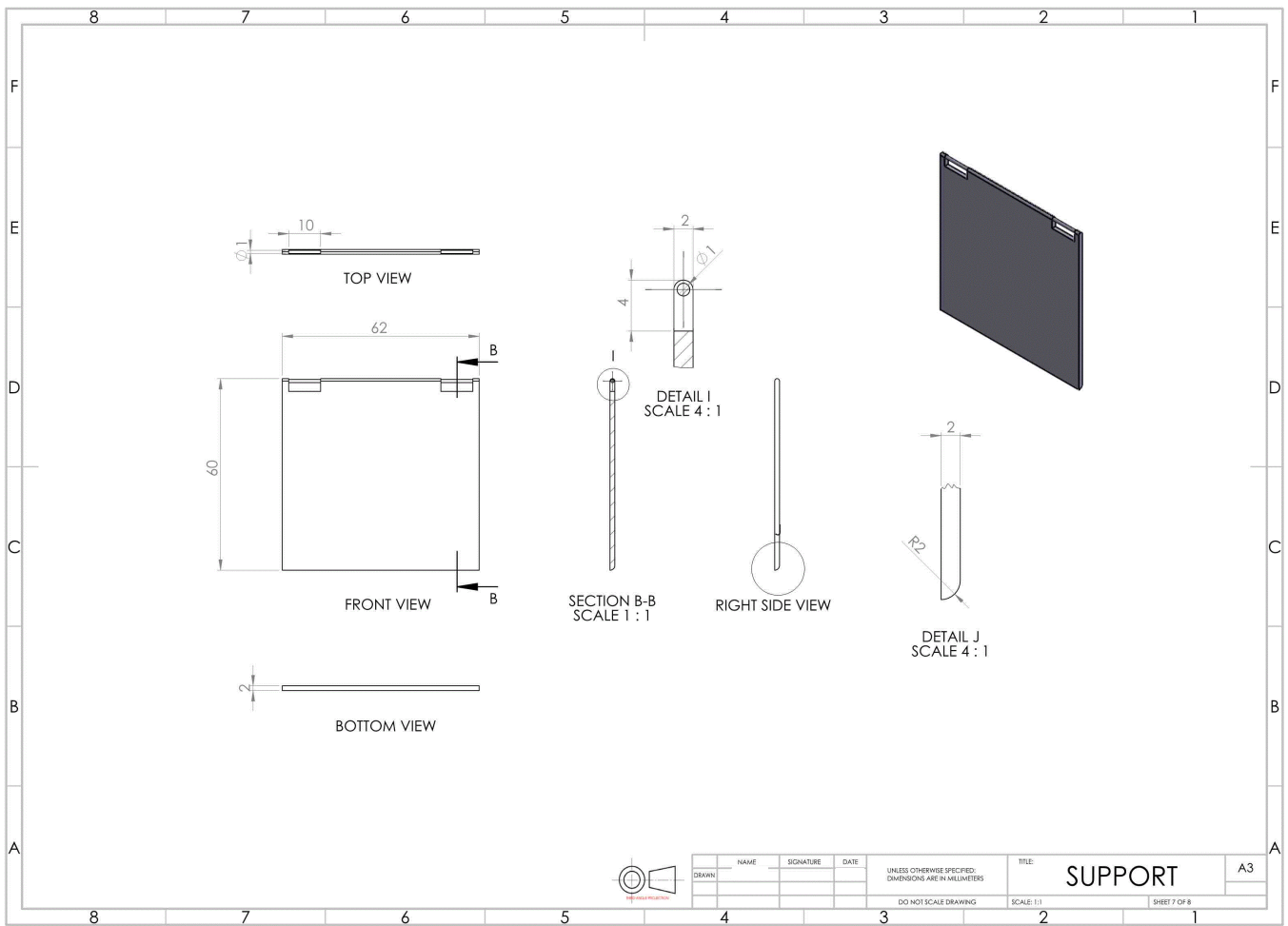
BACK VIEW



NAME	SIGNATURE	DATE	UNLESS OTHERWISE SPECIFIED, DIMENSIONS ARE IN MILLIMETERS	TITLE	A3
			DO NOT SCALE DRAWING	Views	
			SCALE:1:2	SHEET 2 OF 8	







## Merit

**Subject:** Design and Visual Communication

**Standard:** 91631

### Marker commentary

This submission is assessed at Merit.

It shows a set of related complex plans for a folding device stand and has been produced using CAD.

This includes (meeting the grade given):

- CAD drawings showing precision and accuracy
- A series of assembled and exploded pictorial illustrative views to help visualise the design.
- A set of corresponding drawings of the assembled stand and individual components with some cross referencing back to the exploded drawing.
- Some sectional and detail views to help explain small areas. Unfortunately, the selected scales have not added or explained these areas any better. Spacing out the drawings and increasing the scale of the detailed enlargements would have gained a higher grade.

Even though this submission comprises a fairly complex design, it did not meet the cohesive construction criterion.