

This assessment is based on a now-expired version of the achievement standard and may not accurately reflect the content and practice of external assessments developed for 2024 onwards. No part of the candidate's evidence in this exemplar material may be presented in an external assessment for the purpose of gaining an NZQA qualification or award.



# Level 1 Design and Visual Communication RAS 2023

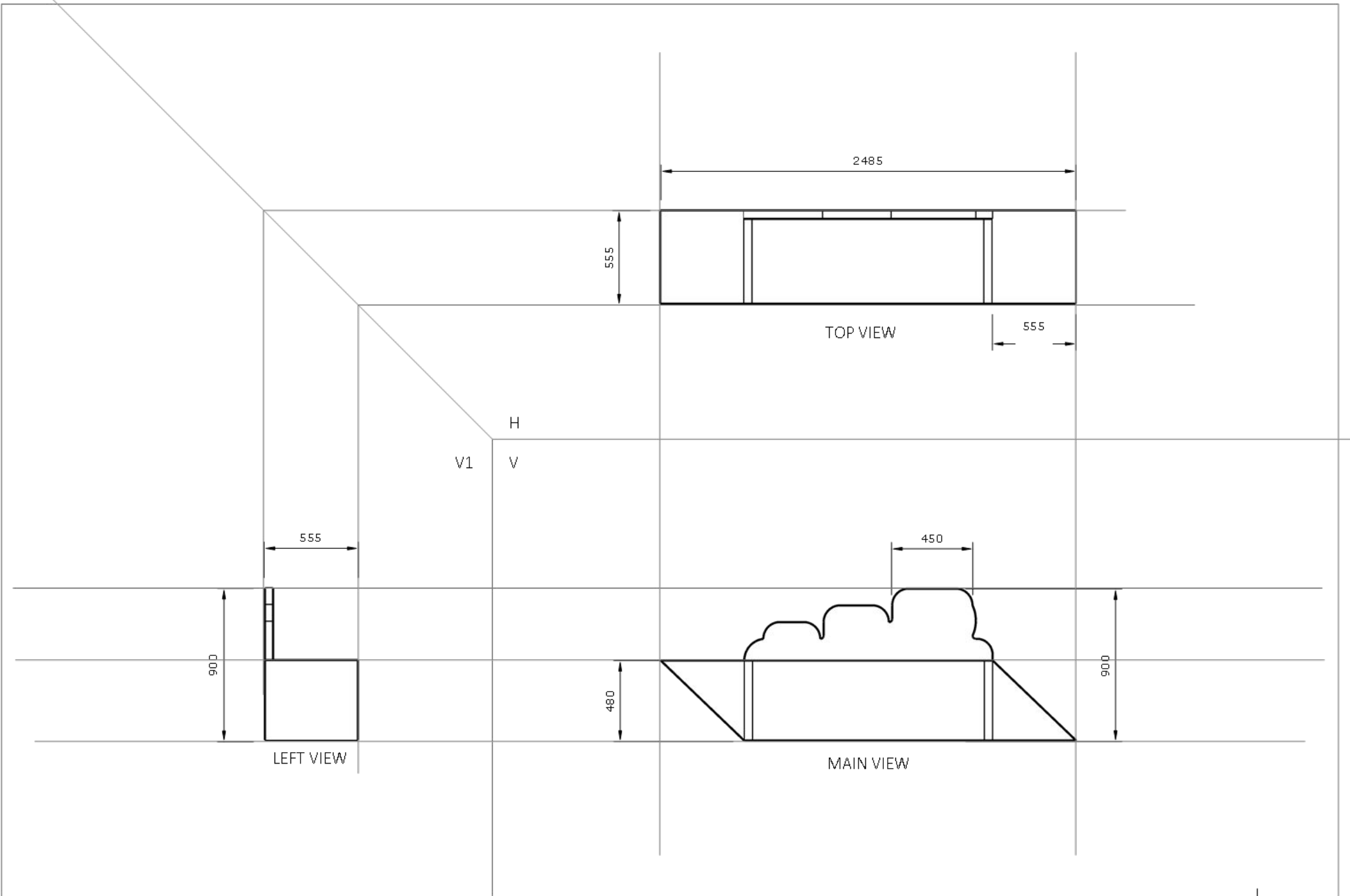
**92003 Use instrumental drawing techniques  
to communicate own product or spatial design  
outcome**

## **EXEMPLAR**

**Excellence**

**TOTAL 07**



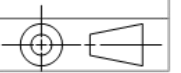


SCALE 1:20

OUTDOOR CHAIR ORTHOGRAPHIC DRAWING

\_\_\_\_\_

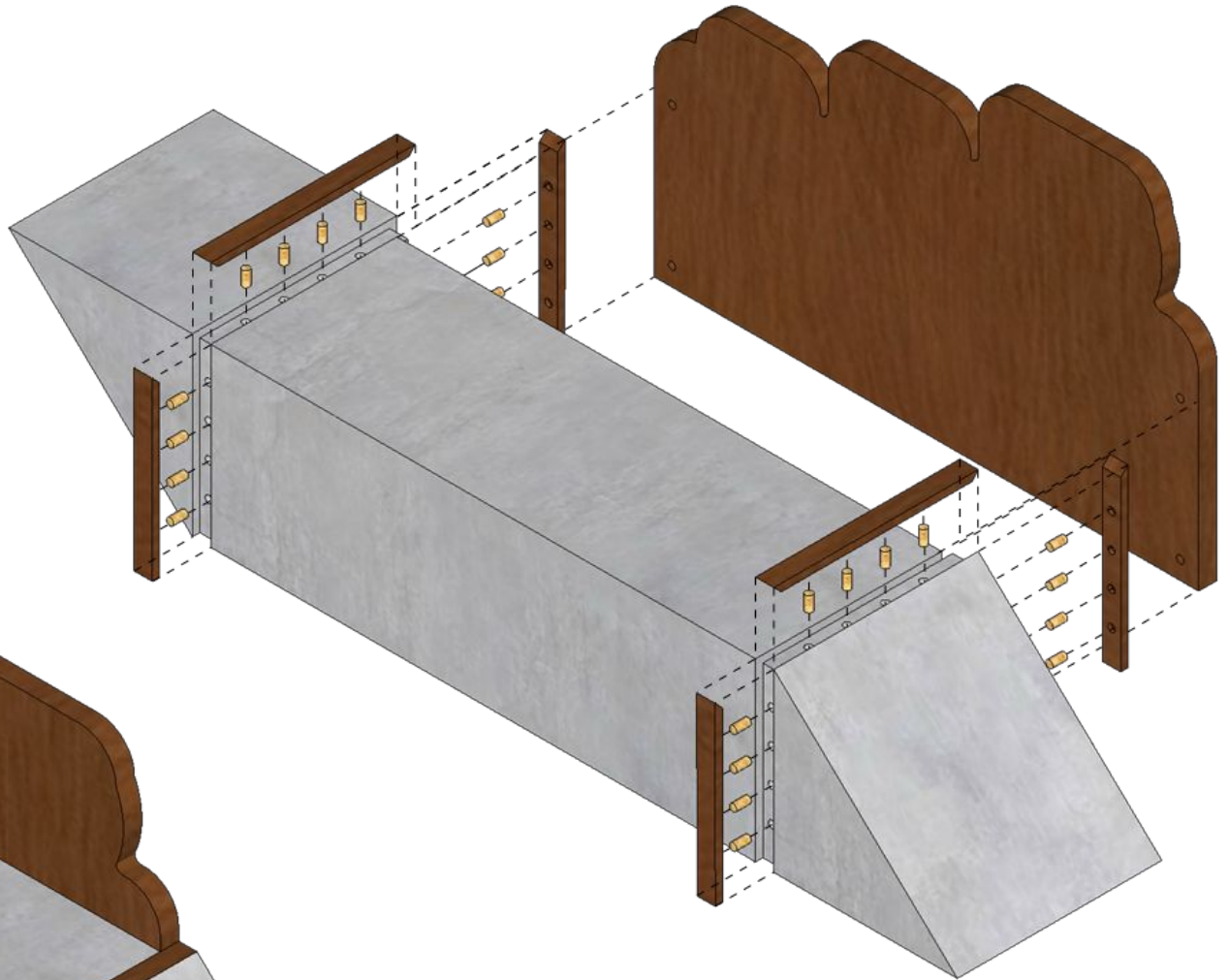
\_\_\_\_\_

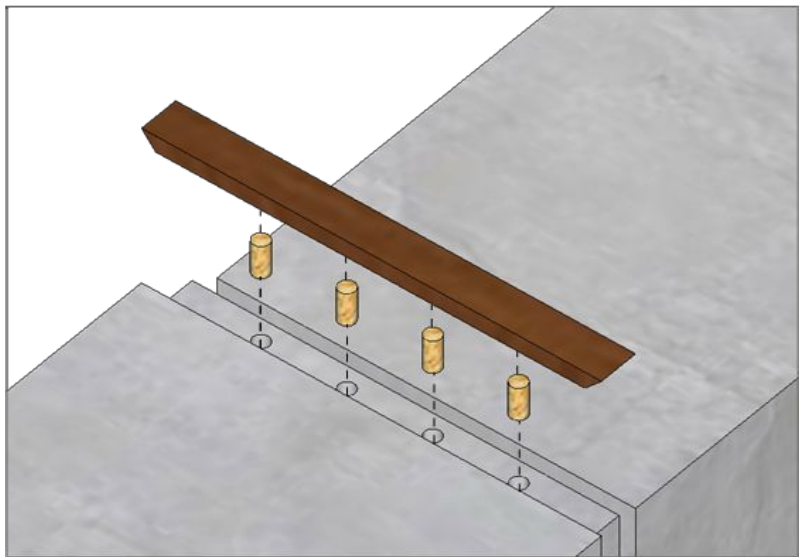
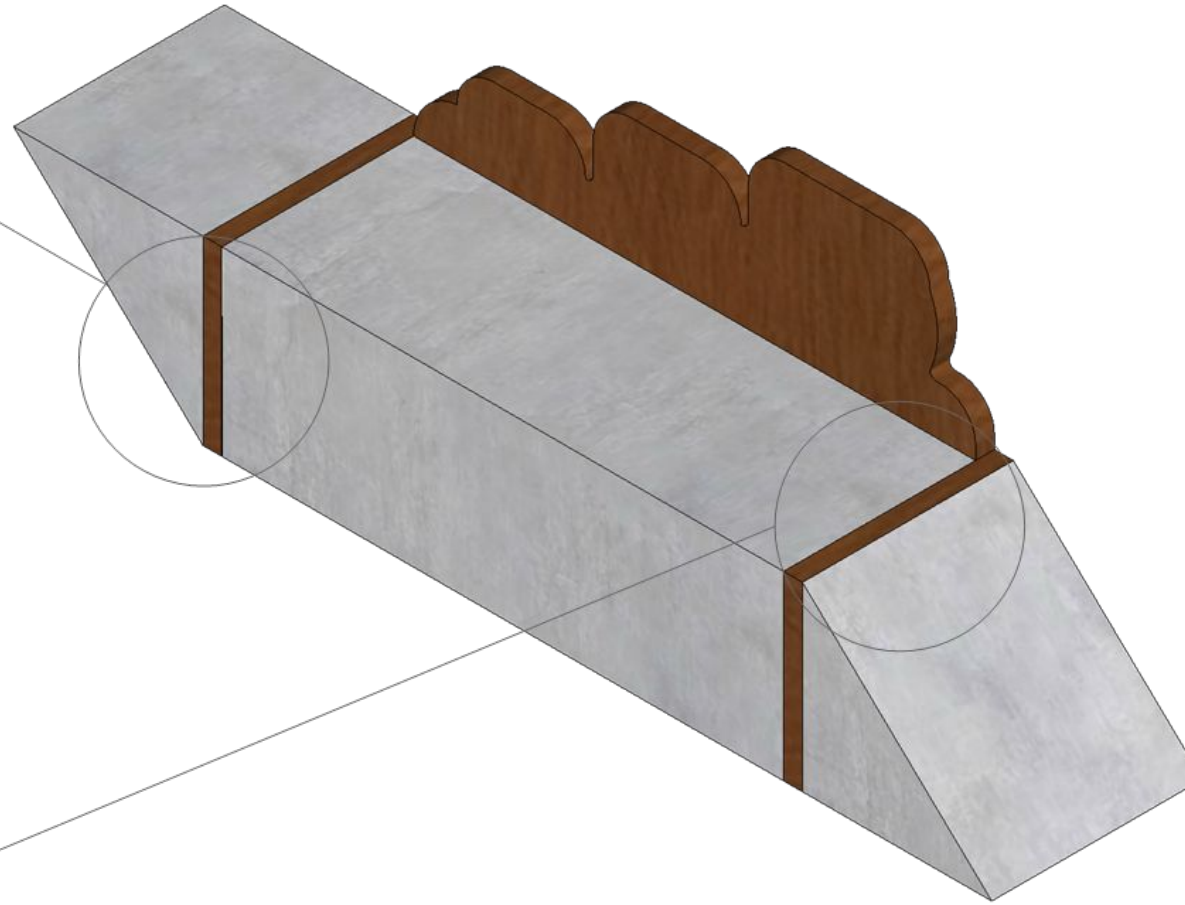
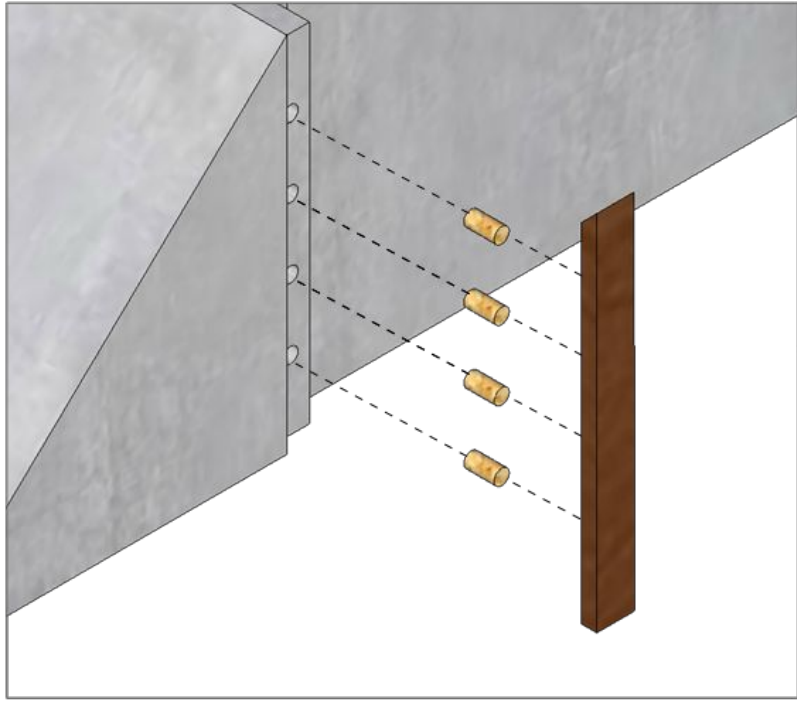


Assembled Isometric 1:10



Exploded Isometric 1:10





## Excellence

**Subject:** Design and Visual Communication

**Standard:** 92003

**Total score:** 07

Grade score	Marker commentary
E7	<p>This submission clearly communicates an outdoor chair design. An orthographic drawing and a number of isometric drawings have been produced digitally using CAD.</p> <p>The orthographic drawing shows three views in correct arrangement that show the form and surface features of the chair. Dimensions have been shown correctly and a suitable scale and tile block used. Projection lines have been added and, while unnecessary, do not interfere with the communication of the views. No hidden detail has been shown.</p> <p>The next page shows two isometric drawings that communicate some assembly information about the design. The recessed grooves are revealed and the method of connecting the parts can be seen. Connecting dowels and the holes they fit into have been shown. Accurate linework can be seen. Rendering is not usually recommended on an instrumental drawing but does give an indication of materials. The dark wood colour is at risk of concealing line clarity and thus diminishing the clarity of communication.</p> <p>The final page shows useful detail drawings that add clarity to the construction information. These details are related clearly to the assembled seat.</p>

This assessment is based on a now-expired version of the achievement standard and may not accurately reflect the content and practice of external assessments developed for 2024 onwards. No part of the candidate's evidence in this exemplar material may be presented in an external assessment for the purpose of gaining an NZQA qualification or award.



# Level 1 Design and Visual Communication RAS 2023

**92003 Use instrumental drawing techniques  
to communicate own product or spatial design  
outcome**

## **EXEMPLAR**

**Excellence**

**TOTAL 07**

# SUMMARY

## Inspiration

The architectural influence for my house design came from Belinda George Architects. Belinda George studies the history of her sites in order to create meaningful connections through her architecture and that is something that I enjoyed about her work. I am very fond of her minimalistic, rustic style when it comes to the houses she has designed.

The creation story of Ranginui and Papatuanuku is another aspect that inspired my building design. The two parts of the house symbolise the separation between the parents (Ranginui and Papatuanuku) and I have used a number of windows throughout my house to represent the coming of light when they were separated from one another.

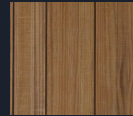
## Purpose

This home is designed to house a family of three. It is situated in the Lake Okareka area in the North Island of New Zealand. This house is positioned to face the lake to allow beautiful views of the water for the family, as well as the mountains and greenery surrounding it.



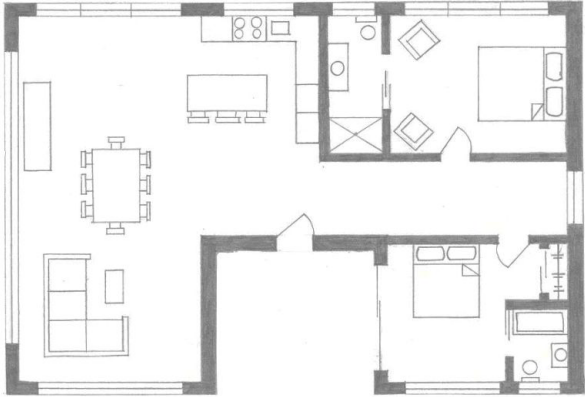
## Materials

The house interior walls (frame) will be made from timber wood, a common material used to build homes in New Zealand. The exterior of the house will have dark grey fibre-cement cladding on it, however there is a bit on the front of the home which is done with natural oak wood. I chose this as it is a sustainable material that will go very well with the natural surroundings of the house. The wood will be painted with epoxy paint, a type of resin that will make the wood weatherproof as well as ensure the colour does not fade overtime as the North Island tends to get very hot.





# FLOORPLAN



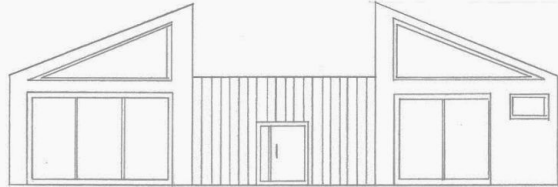
SCALE 1:100

LAKE HOUSE

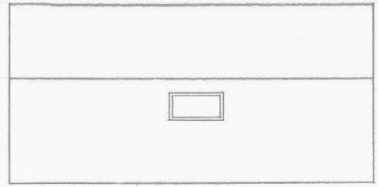
\_\_\_\_\_

\_\_\_\_\_

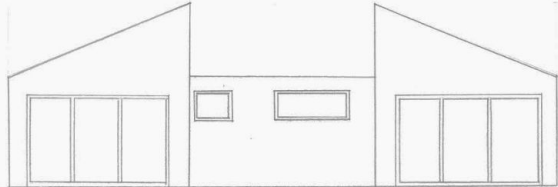
# ELEVATIONS



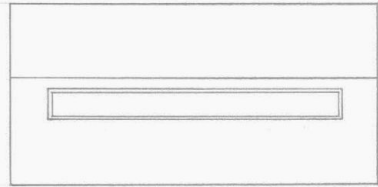
NORTH



WEST



SOUTH



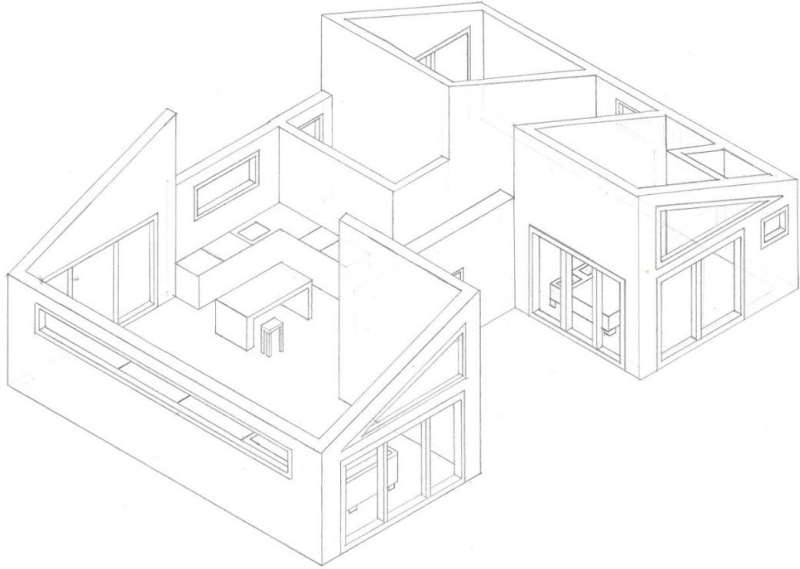
EAST

SCALE 1:100

LAKE HOUSE



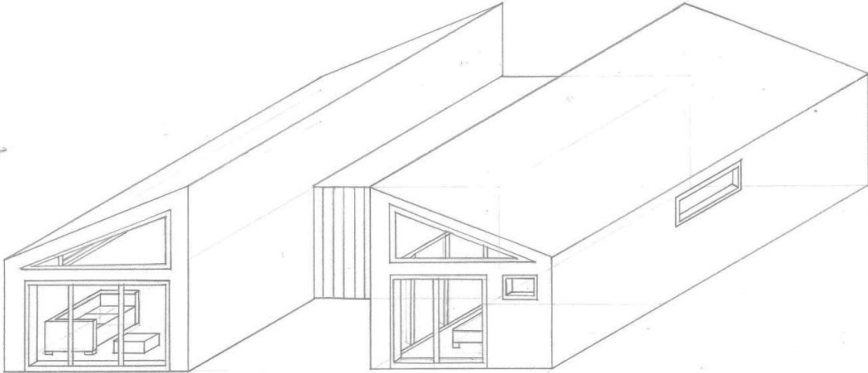
ISOMETRIC  
INTERIOR



SCALE 1:100

LAKE HOUSE

OBLIQUE  
EXTERIOR



SCALE 1:100

LAKE HOUSE

## Excellence

**Subject:** Design and Visual Communication

**Standard:** 92003

**Total score:** 07

Grade score	Marker commentary
E7	<p>This submission presents a design for a lake house. Both orthographic views and paraline drawings have been hand drawn using manual instruments.</p> <p>A floorplan and four orthographic views have been presented. The orthographic views are labelled to indicate their orientation and a suitable scale has been used. No dimensions have been added but the scale used is stated. The elevations shown surface features of the house clearly with door and window frames drawn accurately. The floor plan uses conventional representation symbols well to communicate information about the interior spatial relationships. Conventional symbols for doors and windows are used correctly and furniture symbols give further information about the interior space. An indication of North would be useful to add to help relate the floor plan easily to the elevations on the next page.</p> <p>A very detailed and precise isometric drawing of the house has been constructed. The roof is removed to show details about the internal spatial relationships of the building. The variation in wall height gives an indication of spatial volumes. The depth of window and door frames have been shown accurately.</p>