

No part of the candidate's evidence in this exemplar material may be presented in an external assessment for the purpose of gaining an NZQA qualification or award.



Mana Tohu Mātauranga o Aotearoa
New Zealand Qualifications Authority

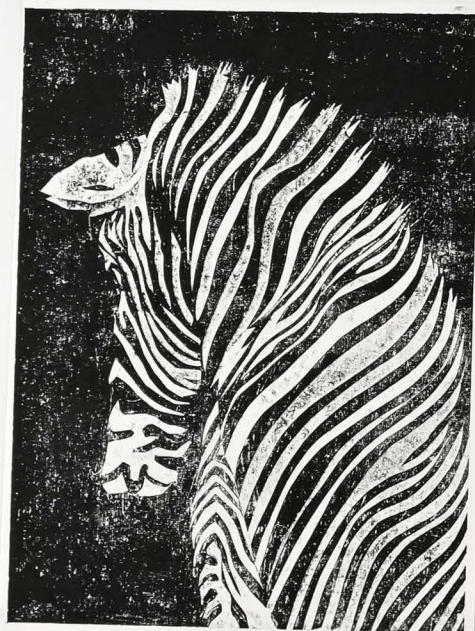
Level 2 Visual Arts 2024

**91323 Produce a body of work to show
understanding of art-making conventions
and ideas within printmaking**

EXEMPLAR

Excellence

TOTAL E



Excellence

Subject: Visual Arts – Printmaking

Standard: 91323

Marker commentary

This portfolio was verified and placed in the lower end of the Excellence grade range as it clearly fulfils the criteria by:

- strongly establishing an investigation into the idea of people, politics, culture, and place in a range of ways on Panel 1, and expresses culture and pride; shifting this in Panel 2 to a distinct focus on the politics of place, expressing tension and trauma in distinctly different ways in each work
- highly purposeful use of processes, materials, and techniques right from the start of Panel 1, creating numerous etching and wood-/linocut print blocks, a sufficient number of which are prepared and printed to show fluency
- a regeneration of ideas that quietly begins in the final work, where the candidate makes a shift in the way they are expressing ideas and the experience of political power.

To sit more securely in the Excellence range, the portfolio would need more evidence of:

- fluency in the use of dry-point etching techniques on Panel 2
- regenerating ideas more strongly by reflecting on and revisiting the best options from earlier works, to express final ideas in new and diverse directions
- more careful consideration to the layout and sizing of works on Panel 2 prior to making, so the works can be read as driving forward in a highly sequential way, avoiding a semi-vertical reading.