

No part of the candidate's evidence in this exemplar material may be presented in an external assessment for the purpose of gaining an NZQA qualification or award.



Mana Tohu Mātauranga o Aotearoa
New Zealand Qualifications Authority

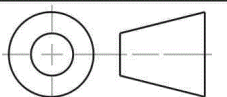
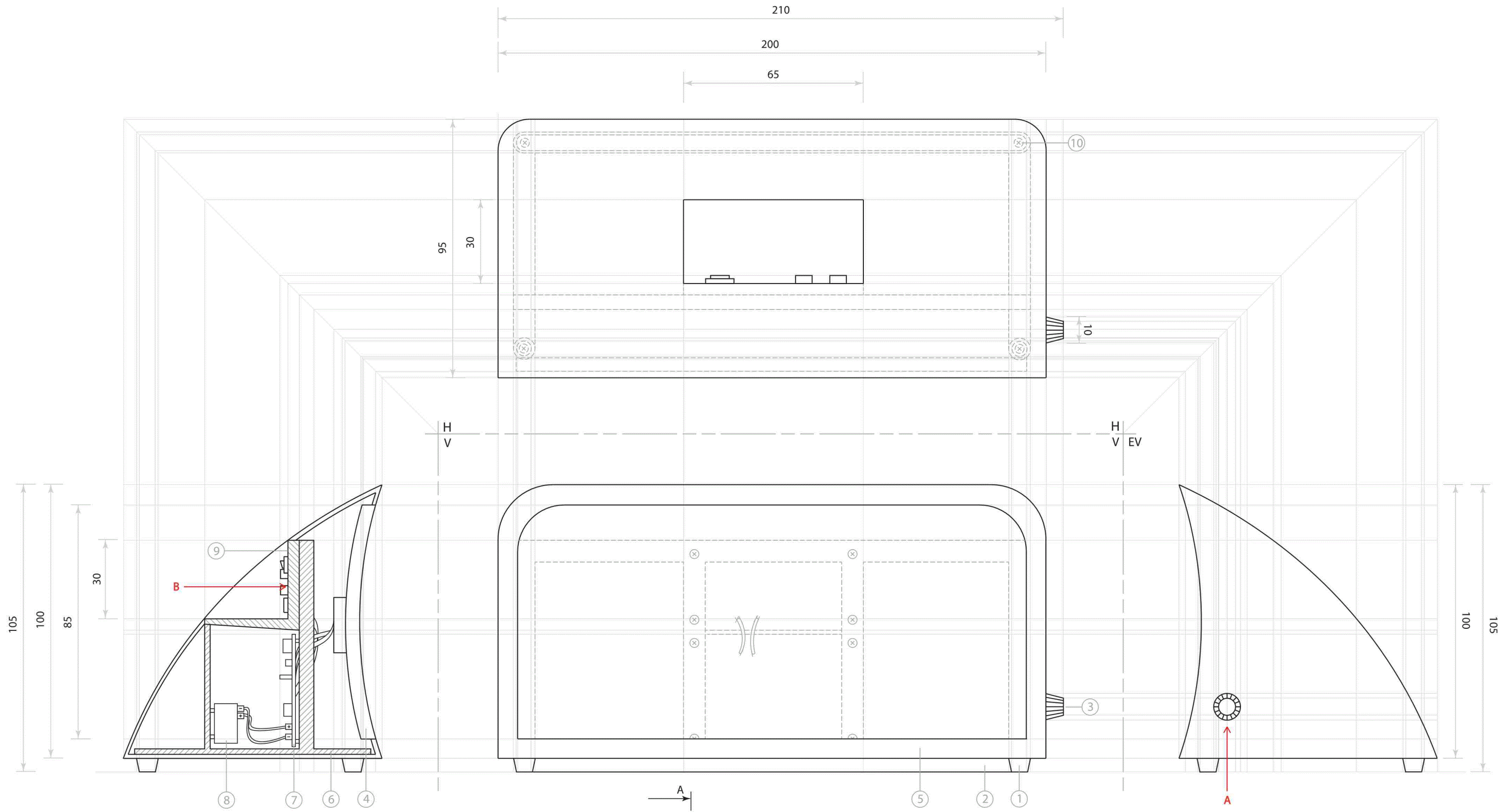
Level 2 Design and Visual Communication 2024

91338 Produce working drawings to communicate technical details of a design

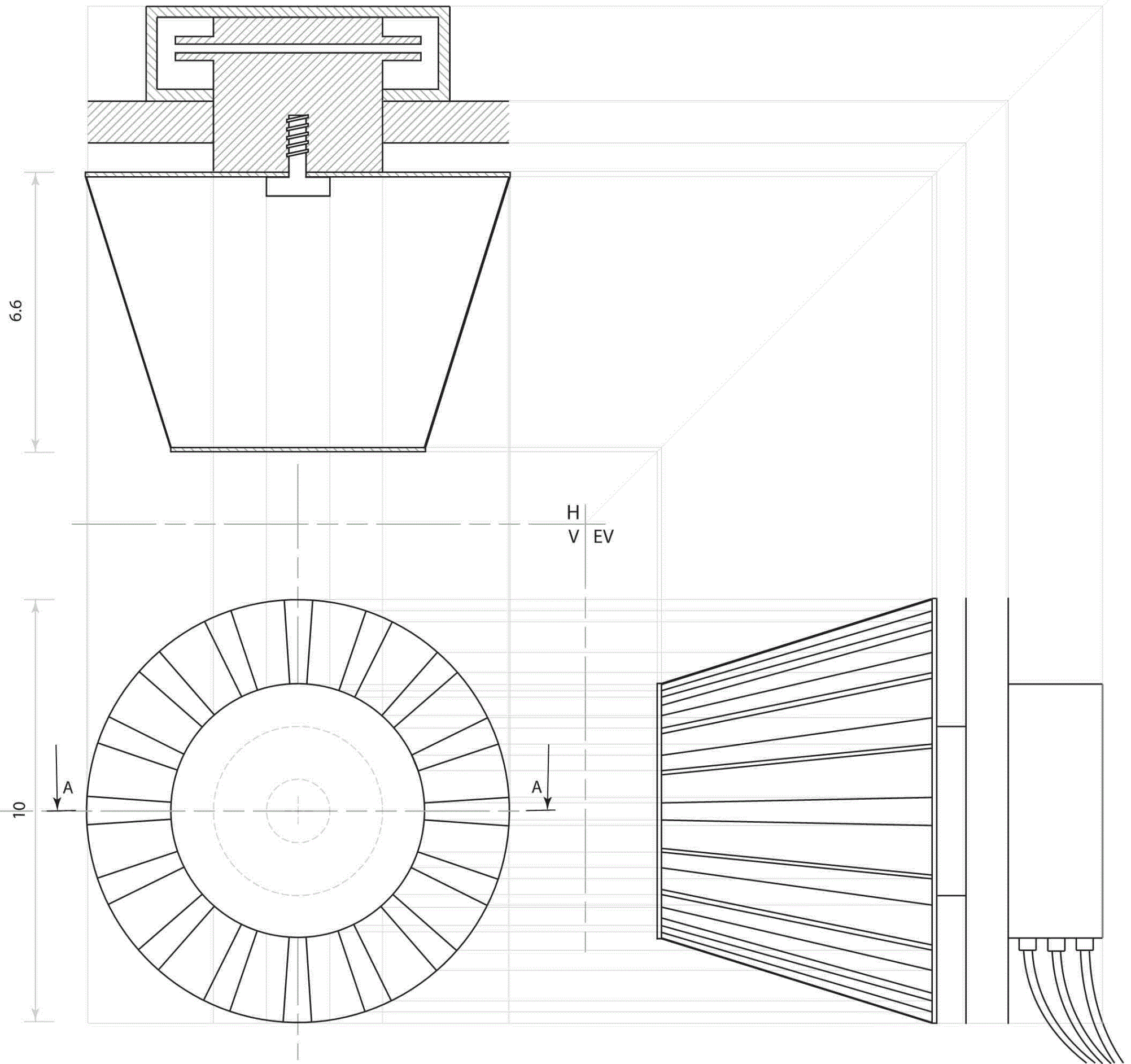
EXEMPLAR – PRODUCT DESIGN

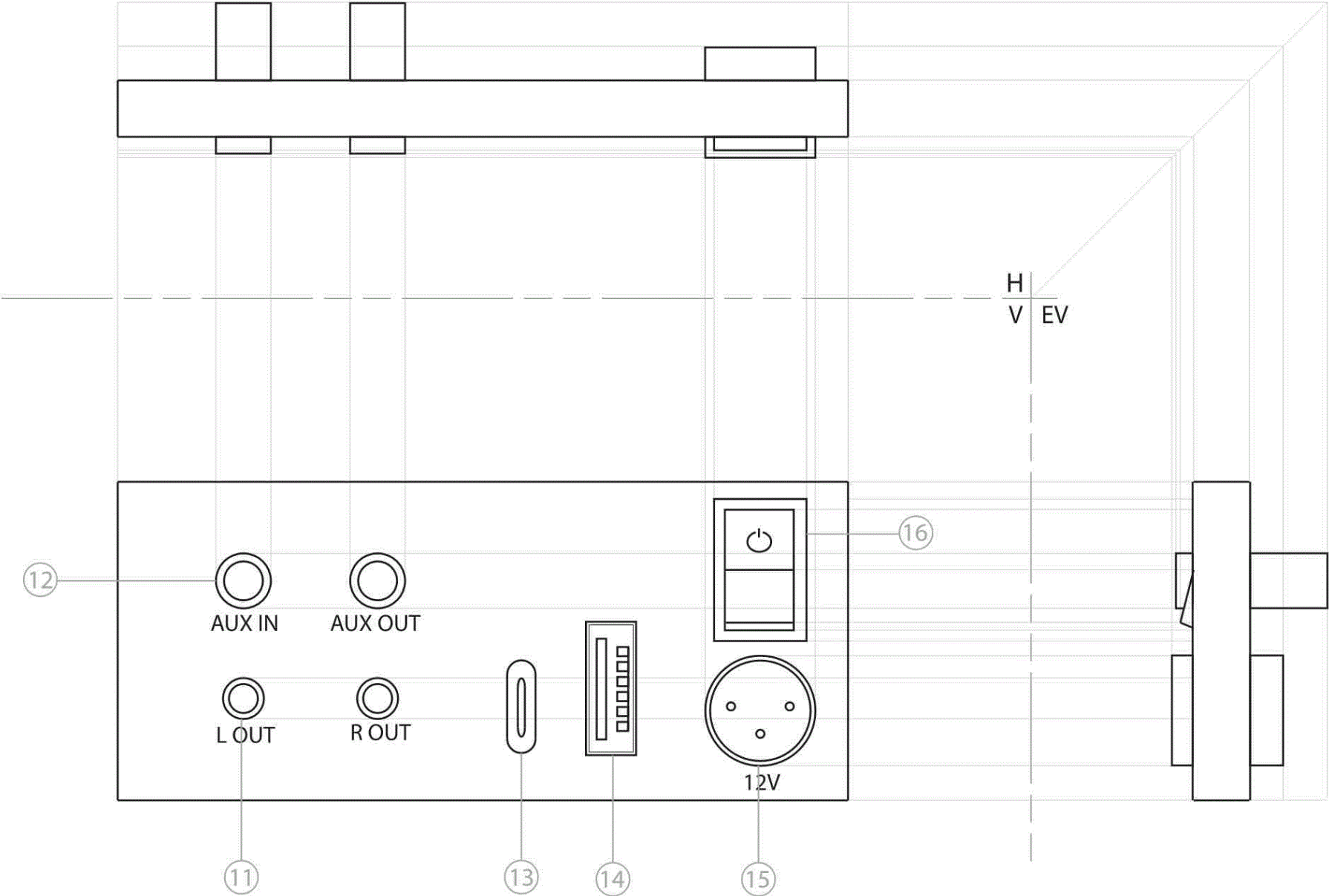
Achievement

TOTAL 03



16	ON/OFF SWITCH	1	PLASTIC AND STEEL
15	12V UNIT ADAPTER PLUG	1	INSULATED STEEL
14	USB OUTPUT PLUG	1	INSULATED STEEL
13	USB TYPE-C CHARGER	1	INSULATED STEEL
12	3.5mm AUX IN/OUT	2	INSULATED STEEL
11	RCA OUTPUT	2	INSULATED STEEL
10	SCREW	14	STEEL
9	PLUG BOARD	1	MULTIPLE COMPONENTS
8	BATTERY UNIT	1	MULTIPLE COMPONENTS
7	CIRCUIT BOARD	1	MULTIPLE COMPONENTS
6	UNIT FRAMING	1	ALIMUNUM
5	UNIT CASING	1	PLASTIC MOULD
4	LCD SCREEN	1	MULTIPLE COMPONENTS
3	VOLUME KNOB	1	STEEL
2	BACK GRIP STRIP	1	RUBBER COATED STEEL
1	FRONT GRIP PEG	2	RUBBER COATED STEEL
ITEM	NAME	QTY	MATERIAL





Achievement – product design

Subject: Design and Visual Communication

Standard: 91338

Total score: 03

Grade score	Marker commentary
A3	The evidence for this Standard is most identifiable in the page containing the orthographic projection of the plan, elevations, and cross section. The shape and form of the object can be taken from these views; however, the small size of the section view and lack of sectioning conventions being applied correctly stops it from receiving a higher grade. The additional pages that include the volume knob and plug-board contribute little to the communication.

No part of the candidate's evidence in this exemplar material may be presented in an external assessment for the purpose of gaining an NZQA qualification or award.



Mana Tohu Mātauranga o Aotearoa
New Zealand Qualifications Authority

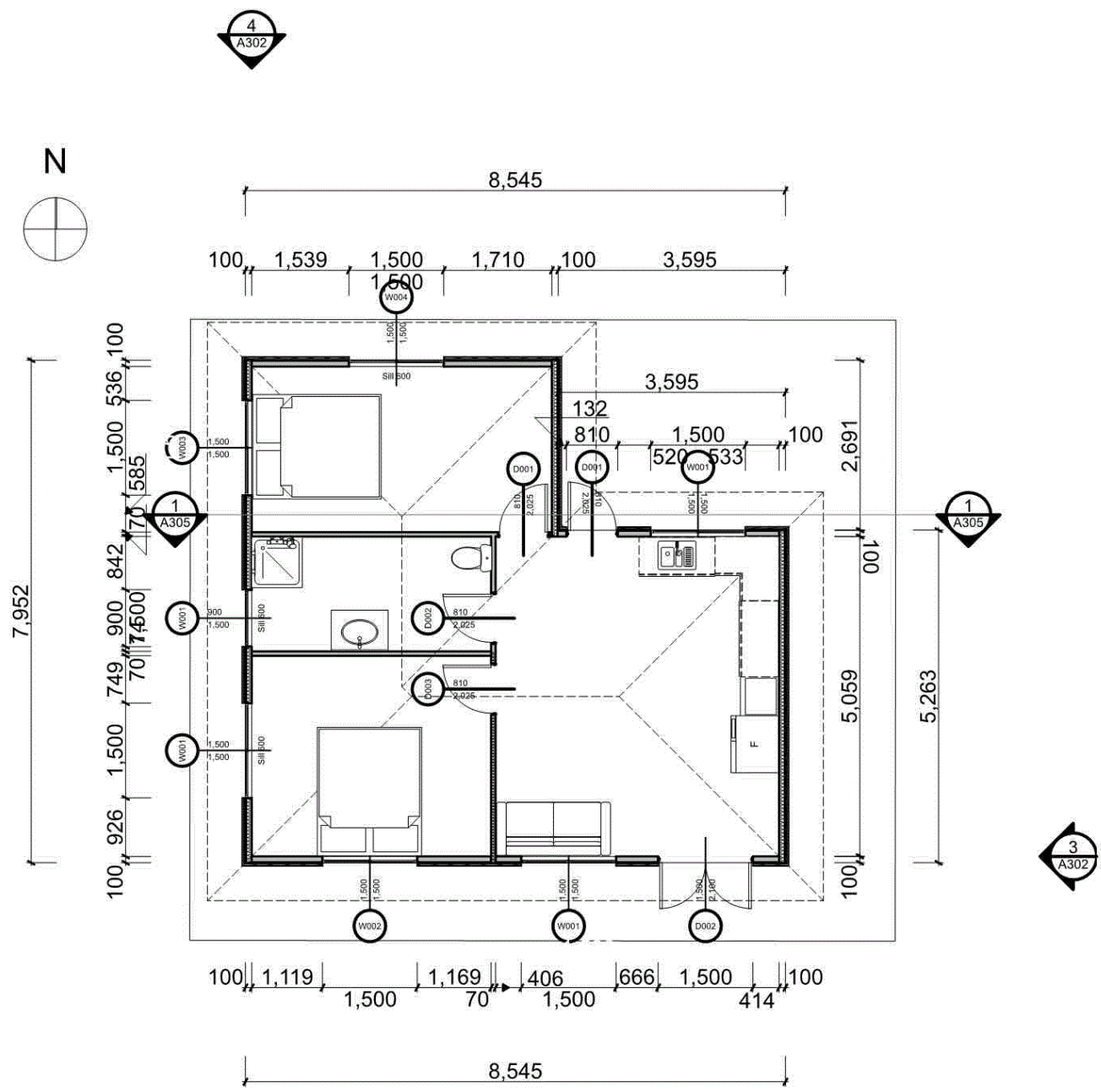
Level 2 Design and Visual Communication 2024

91338 Produce working drawings to communicate technical details of a design

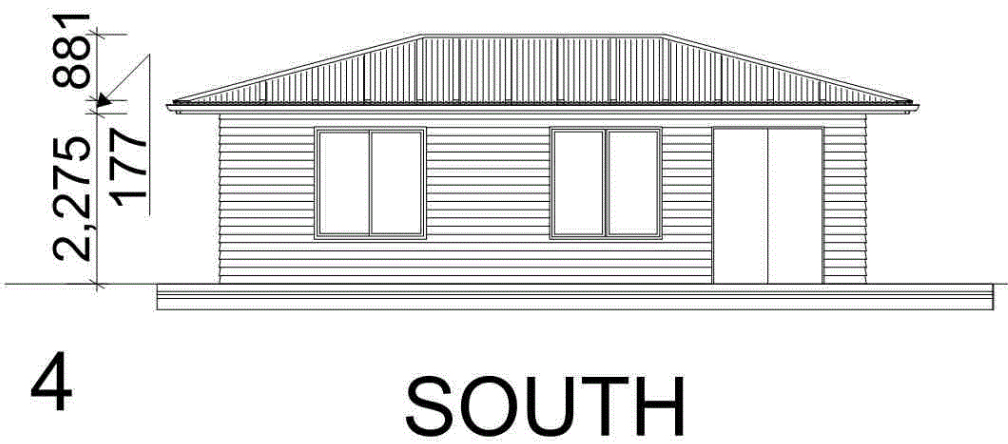
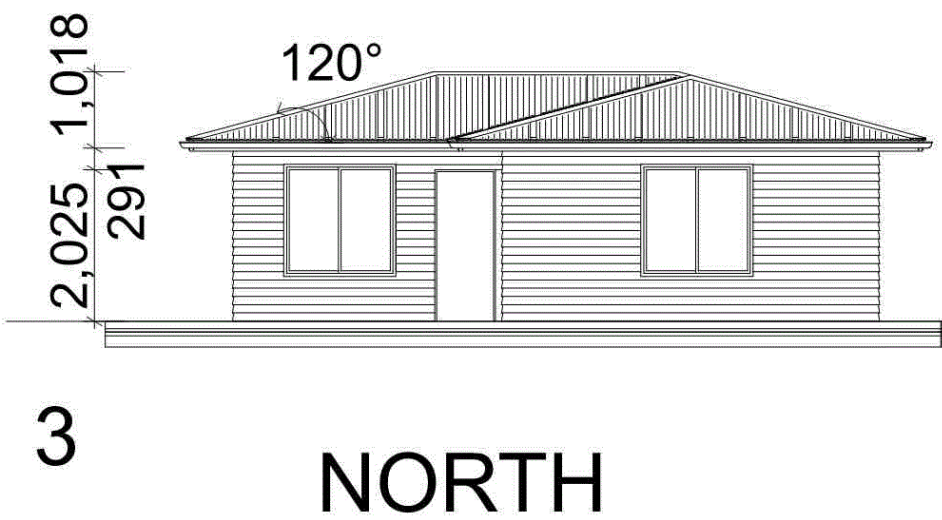
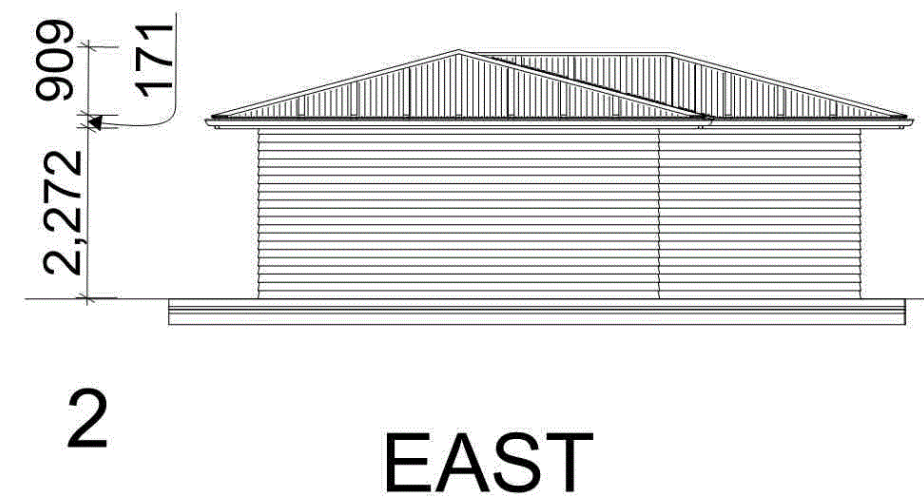
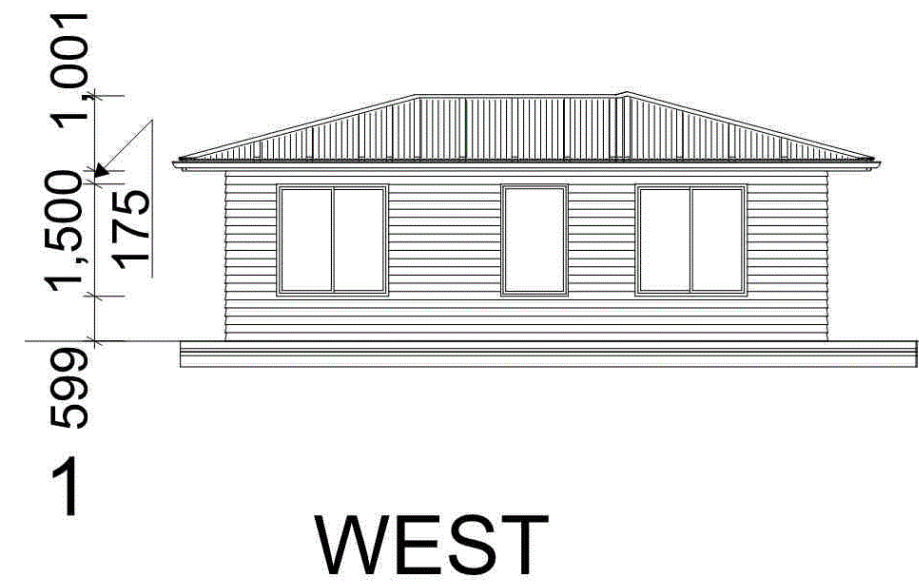
EXEMPLAR – SPATIAL DESIGN

Achievement

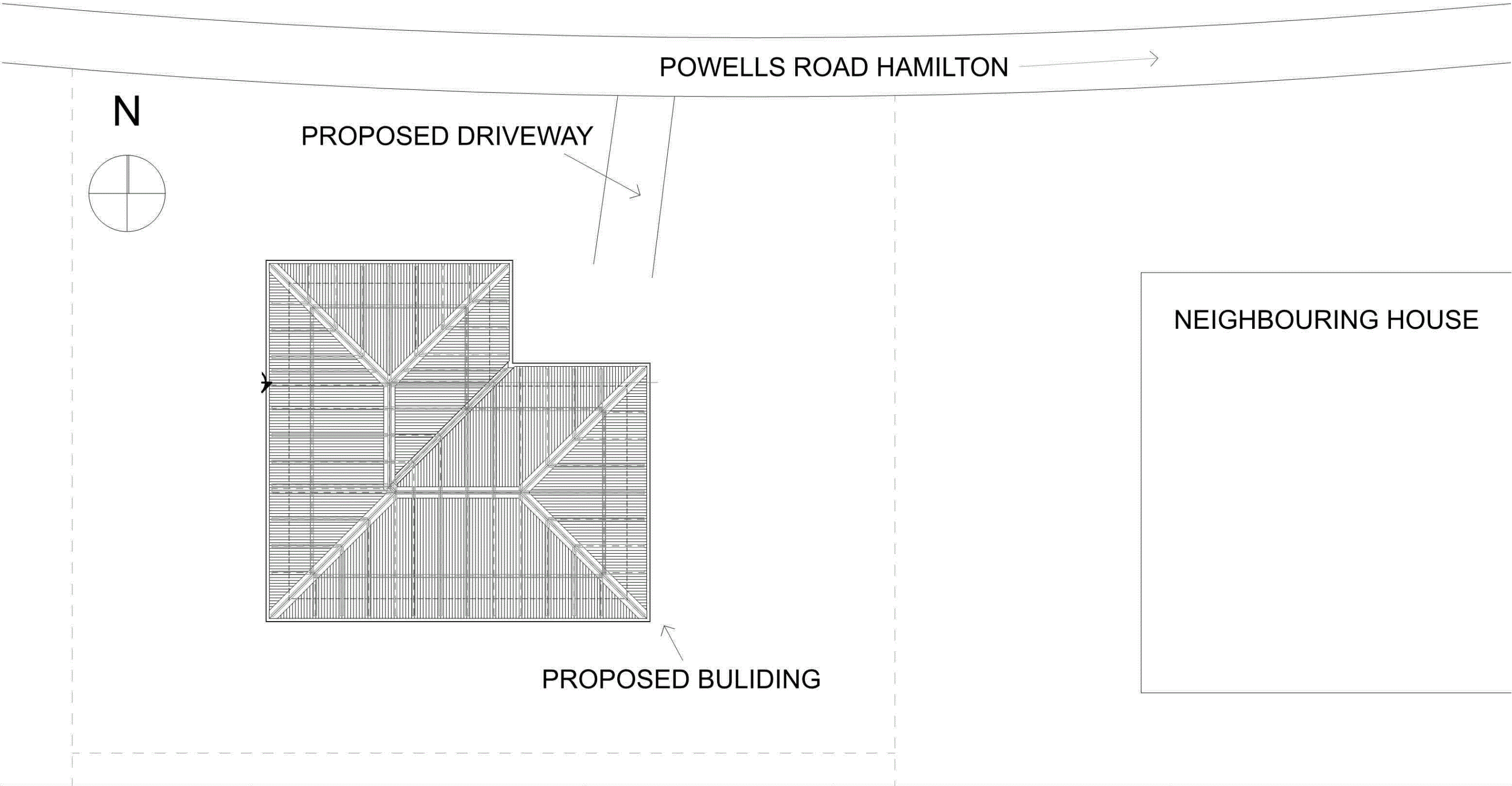
TOTAL 03



	EMERGENCY HOUSING	16/09/2024	SCALE 1: 100	DRAWING 1 OF 7
		ROOF CHAIN FLOOR PLAN		



	EMERGENCY HOUSING	16/09/2024	SCALE 1: 100 ELEVATIONS	DRAWING 2 OF 7
--	----------------------	------------	----------------------------	-------------------



EMERGENCY
HOUSING

16/09/2024

SCALE 1: 100
SITE PLAN

DRAWING 3
OF 7

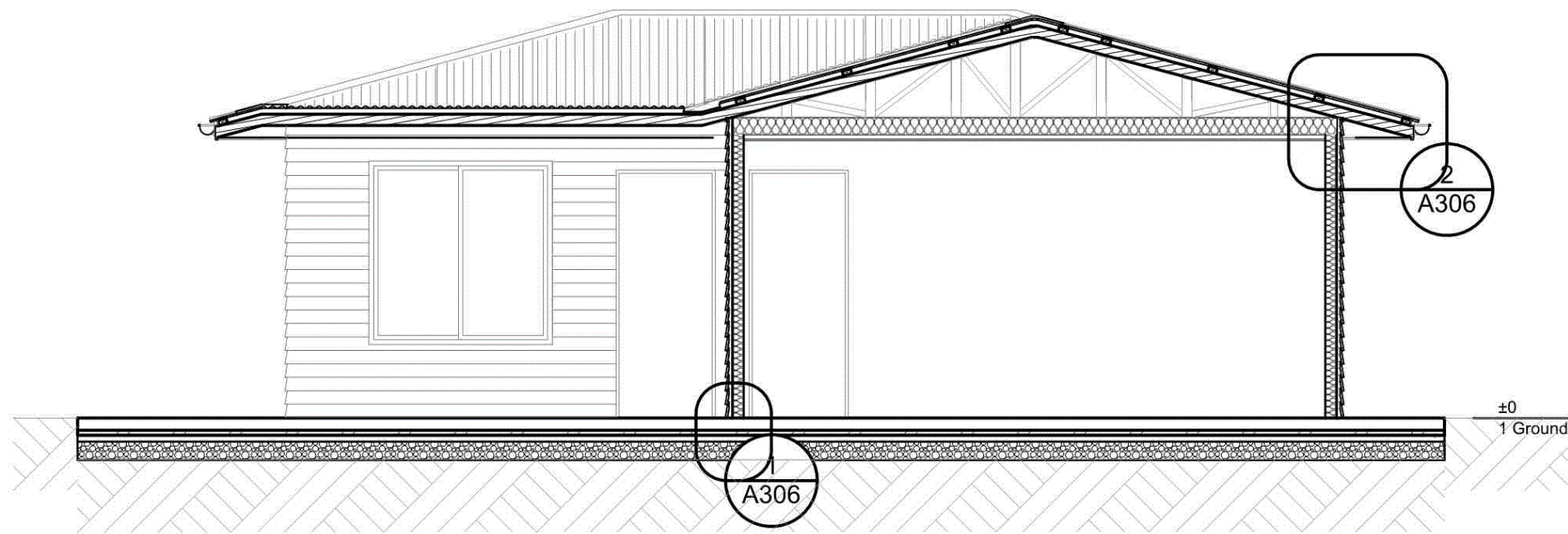


EMERGENCY
HOUSING

16/09/2024

3D PHOTOS

DRAWING 4
OF 7



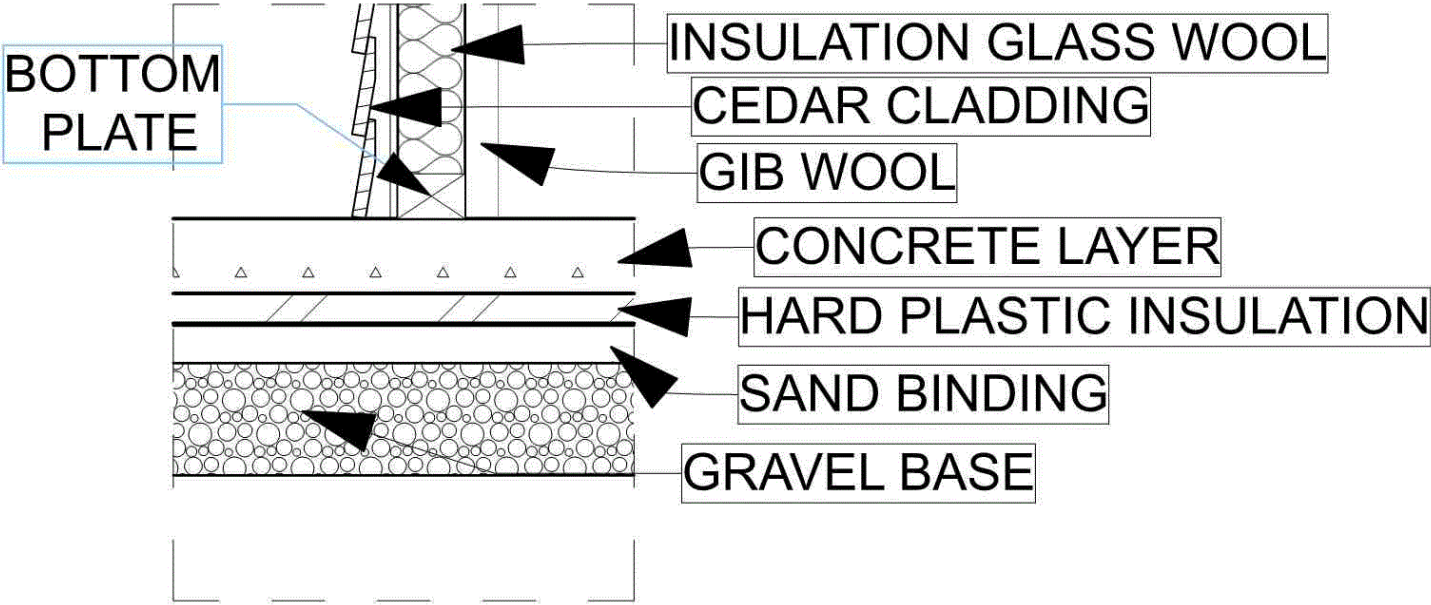
1

Section A

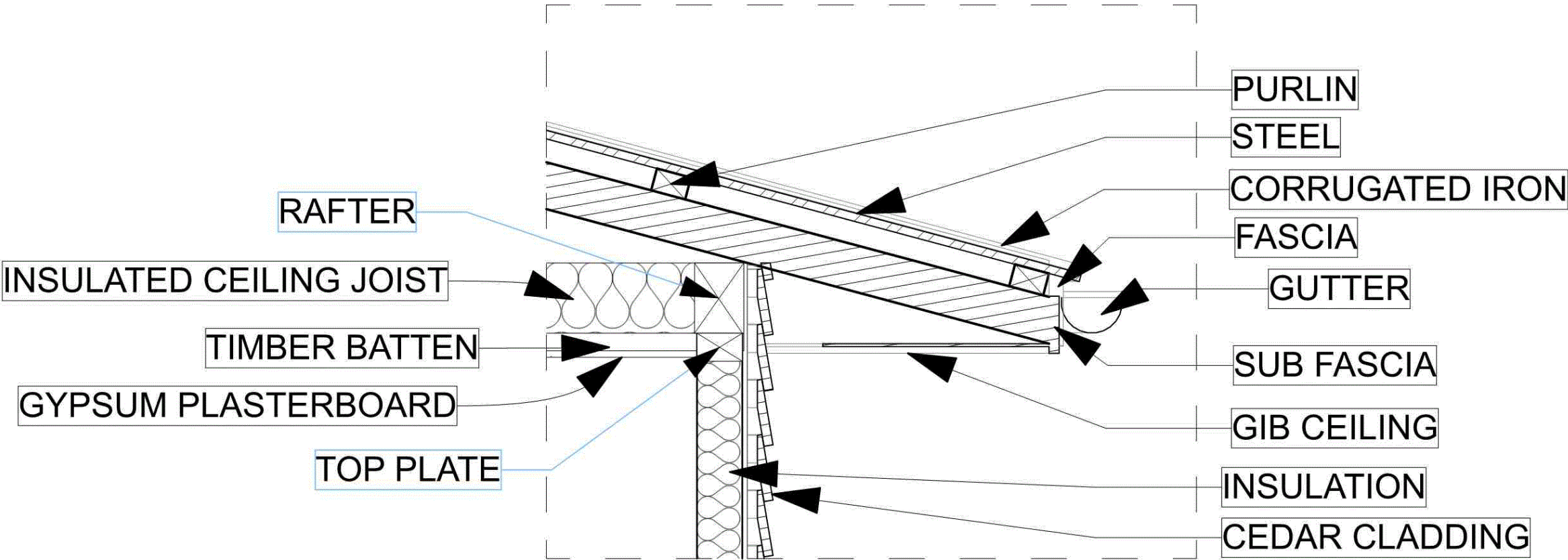
1:50

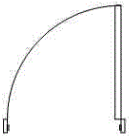
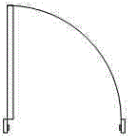
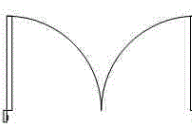
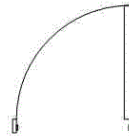
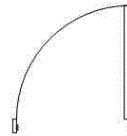


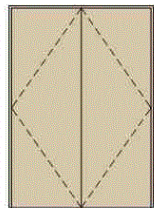


EMERGENCY HOUSING	16/09/2024	SCALE 1: 50 SECTION VIEW	DRAWING 5 OF 7
----------------------	------------	-----------------------------	-------------------

SECTION 1



SECTION 2






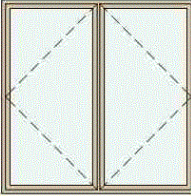
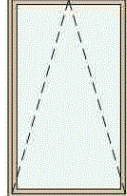
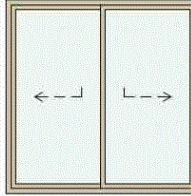
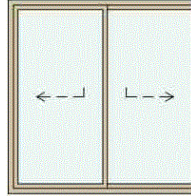
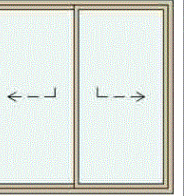


Door Schedule					
ID	D001	D001	D002	D002	D003
2D Symbol					
Elevation (Opening Side)					
Location					
Unit Size (WxH)	810×2,025	810×2,025	1,500×2,100	810×2,025	810×2,025
Rough Opening Size (WxH)	810×2,025	810×2,025	1,500×2,100	810×2,025	810×2,025
Leaf Size (WxH)	760×2,000	760×2,000	1,450×2,075	760×2,000	760×2,000
Orientation	L	R	L	L	L
Sill Height	0	0	0	0	0
Head Height	2,025	2,025	2,100	2,025	2,025
Quantity	1	1	1	1	1

1

Door Schedule

1:1

Window Schedule					
ID	W001	W002	W003	W004	W004
2D Symbol					
Elevation (Opening Side)					
Location					
Unit Size (WxH)	1,500×1,500	900×1,500	1,500×1,500	1,500×1,500	1,500×1,500
Rough Opening Size (WxH)	1,500×1,500	900×1,500	1,500×1,500	1,500×1,500	1,500×1,500
Orientation					
Sill height	600	600	600	600	600
Head height	2,100	2,100	2,100	2,100	2,100
Quantity	3	1	1	1	1

2

Window Schedule

1:1

Achievement – spatial design

Subject: Design and Visual Communication

Standard: 91338

Total score: 03

Grade score	Marker commentary
A3	<p>This set of drawings is at an Achievement grade. The site plan clearly shows the building positioned on the site with a north point orientating the building. The plan view is drawn well, using the correct conventions and communicates the technical details in the form of room fittings, door swings, and windows. It also shows the north point orientated correctly.</p> <p>The elevations are drawn correctly, showing windows and doors and exterior materials. The labelling of the elevations is correctly linked to the floor plan view. However, the proportion of the dimensioning on the elevations is too big and is not showing the application of dimensioning conventions.</p> <p>The candidate has some understanding of how to use CAD and though the pages are linked through the title and page numbers, the sequence of pages is a little jumbled. It is important to reference and link all of the drawings to one another to enable them to be read as a coherent set of working drawings.</p> <p>To allow this set of drawings to achieve at a higher level, there is a need to communicate the technical details more clearly and effectively. The cross section drawn to a larger scale would have allowed it to communicate the visual information more effectively. Also, the linking between the section and the details are not accurate or clearly indicated for the features to avoid ambiguity.</p>