

No part of the candidate's evidence in this exemplar material may be presented in an external assessment for the purpose of gaining an NZQA qualification or award.



## Level 2 Design and Visual Communication 2024

**91339 Produce instrumental perspective projection drawings to communicate design ideas**

**Excellence**

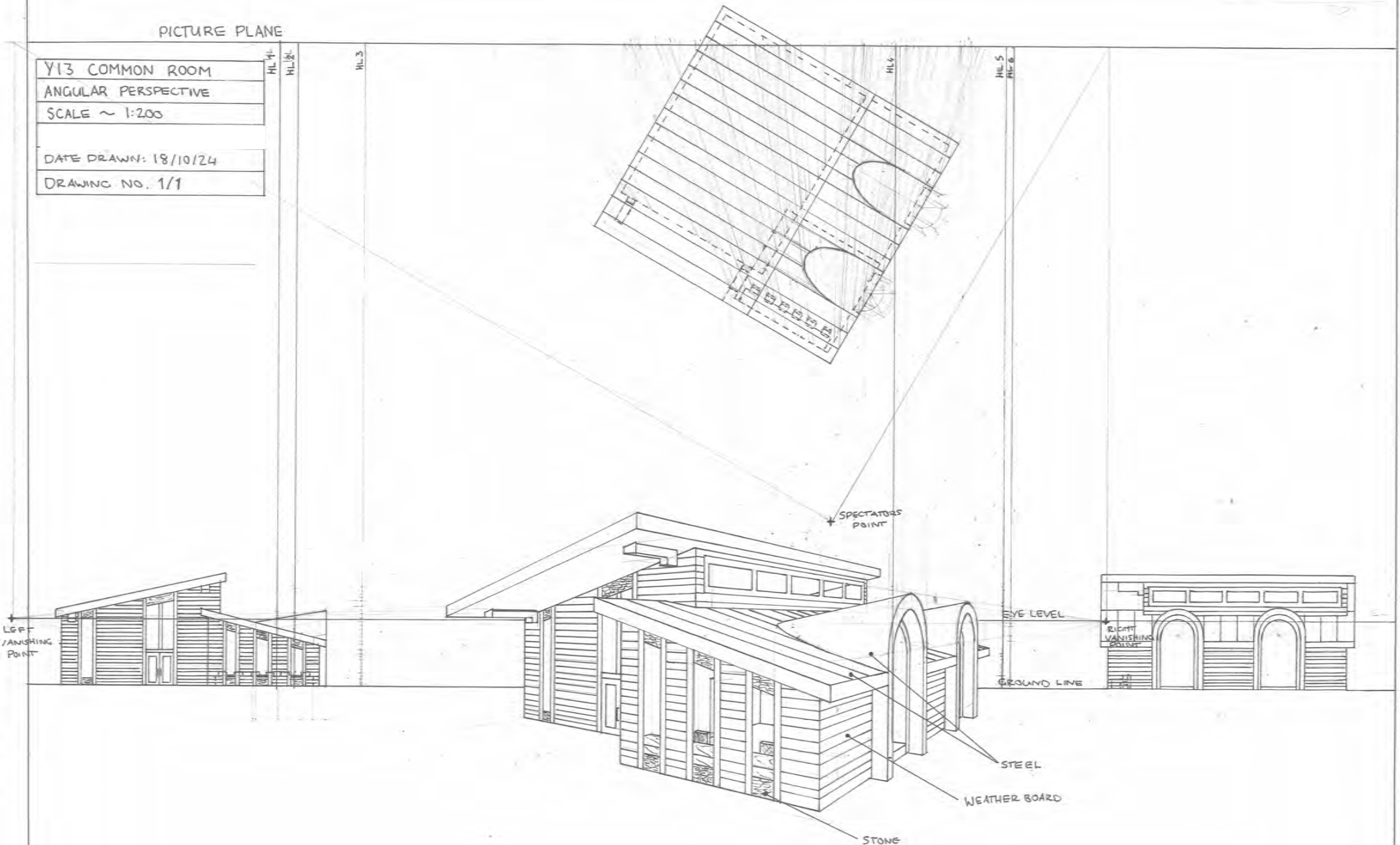
**TOTAL 07**

PICTURE PLANE

Y13 COMMON ROOM  
ANGULAR PERSPECTIVE  
SCALE ~ 1:200

DATE DRAWN: 18/10/24

DRAWING NO. 1/1



## Excellence

**Subject:** Design and Visual Communication

**Standard:** 91339

**Total score:** 07

Grade score	Marker commentary
E7	The perspective principles have been applied correctly, and the viewpoint has been chosen to allow the details of the design features and visual information to be shown effectively. All lines and curves have been plotted accurately, and the exterior features of the building have been shown clearly, accurately, and effectively. The placement of the picture plane towards the back of the plan has enhanced the effectiveness and clarity of the projected view; however, the thickness of the window and door reveals have not been added, meaning that this drawing is not at the high end of the Excellence grade.