

No part of the candidate's evidence in this exemplar material may be presented in an external assessment for the purpose of gaining an NZQA qualification or award.



## **Level 2 Design and Visual Communication 2024**

**91339 Produce instrumental perspective projection drawings  
to communicate design ideas**

**Merit**

**TOTAL 05**

Year 13 Common Room  
Angular Perspective  
Scale ~ 1:200

Date: 16/10/2024  
Drawing NO: 01

Picture Plane

Plan

+ Spectators Point

Height Line

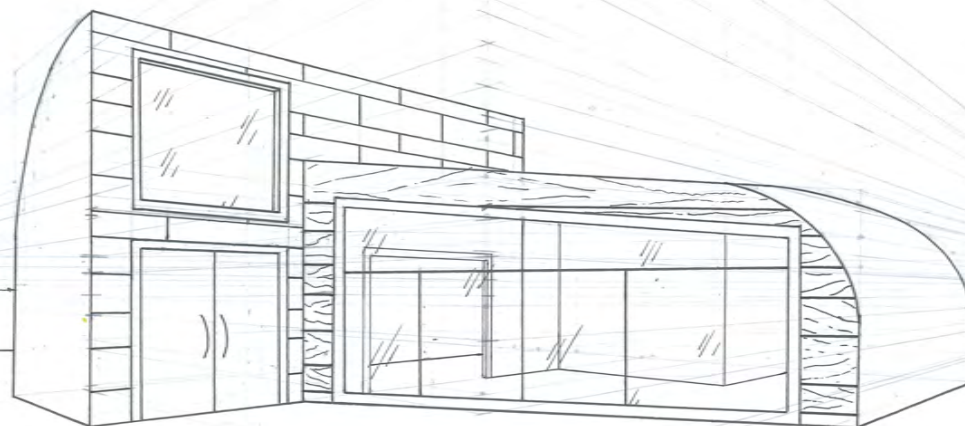
Left  
Vanishing Point

Right  
Vanishing Point

Eye Level

Elevation

Ground Line Elevation



## Merit

**Subject:** Design and Visual Communication

**Standard:** 91339

**Total score:** 05

Grade score	Marker commentary
M5	The perspective principles have been applied correctly, and the direction and height of the viewpoint have been used accurately to achieve a larger drawing. This enables the communication of the design and shows some detail of the design features. However, not all features are shown with depth or thickness, meaning that not all the key detail is enhanced. For this size of drawing, more features could have been shown.