

No part of the candidate's evidence in this exemplar material may be presented in an external assessment for the purpose of gaining an NZQA qualification or award.



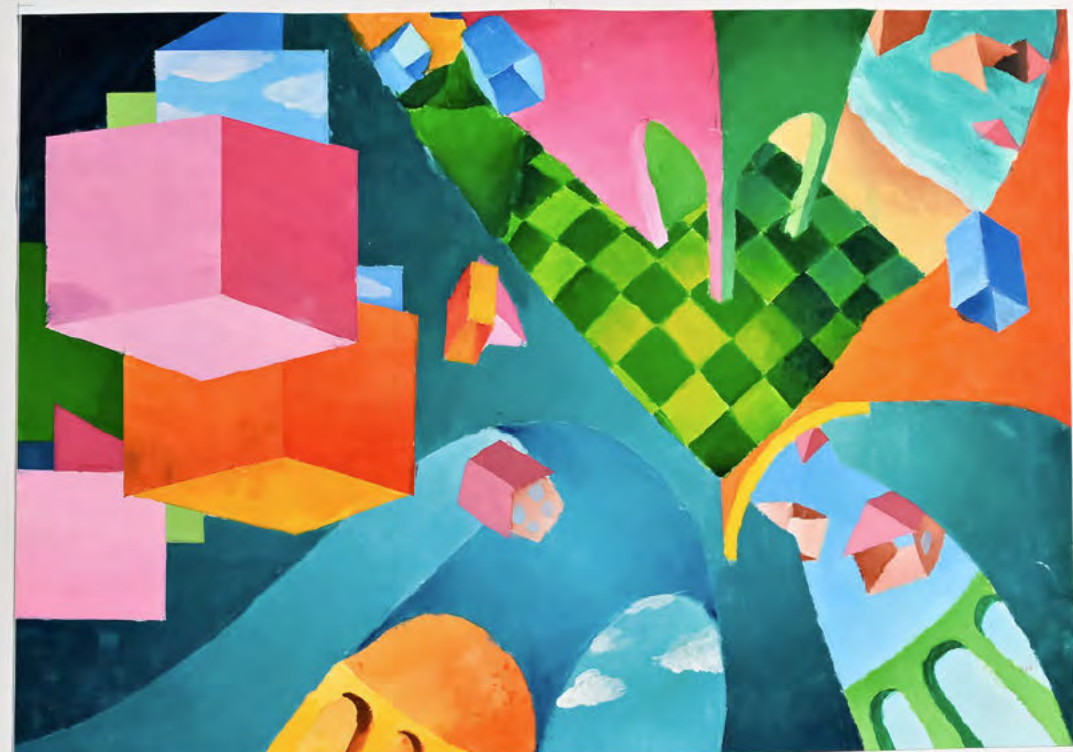
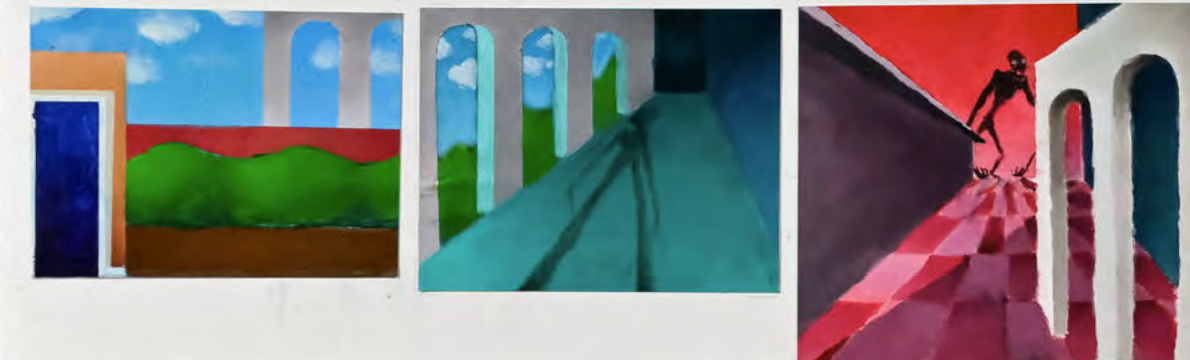
Level 3 Visual Arts 2024

91456 Produce a systematic body of work that integrates conventions and regenerates ideas within painting practice

EXEMPLAR

Achievement

TOTAL A



Achievement

Subject: Visual Arts – Painting

Standard: 91456

Marker commentary

This portfolio considers how architectural space can be developed and understood via clear stages of production and invention using different points of view as a driver for creative problem solving. Working with appropriate skills in painting, the portfolio shows a sustained investigation over a number of artworks, consistent with a year's study.

The initial sequence of works shows an uncomplicated entry point, considering architectural forms, by looking at, along, and through the pictorial space. This is further enhanced by an investigation into colour combinations which render the treatment of space, form, and light in more abstract modes. The body of work continues via explicit reference to artist practice to create a sense of tension and unease in the viewer before cleverly exploiting space, scale, and point-of view in a playful combination of forms, shapes, and colour as the candidate's invented world disassembles.

Panel 1 begins with initial pen and wash studies, combining simplified viewpoints on a poured ground before moving towards investigations into blended paint approaches, based in interior space. A sense of disquiet is achieved with the inclusion of a silhouetted figure, threatening hand, and distorted shadow. The candidate has considered De Chirico as an appropriate artist practice with the inclusion of archways, the simplified horizon, and forced perspective.

Panels 2 and 3 continue with the established motifs, combining these with their earlier discovery of a poured ground in a series of larger works dealing with illusory, surrealistic space where multiple points of view and shifting perspectives lead the eye around the canvas.

Overall, this submission presents an authentic linear journey where the candidate has discovered successful modes of production by referencing relevant artist models and combining their approaches to inform pictorial and technical development. Initial sketch works inform the inception of the practice while the inclusion of the figure, exploration of colour, and paint application offer some control and refinement of technique. Editing and sequencing in the early stages would offer more opportunity for analysis, offering a clearer path to Merit.