

No part of the candidate's evidence in this exemplar material may be presented in an external assessment for the purpose of gaining an NZQA qualification or award.



Mana Tohu Mātauranga o Aotearoa
New Zealand Qualifications Authority

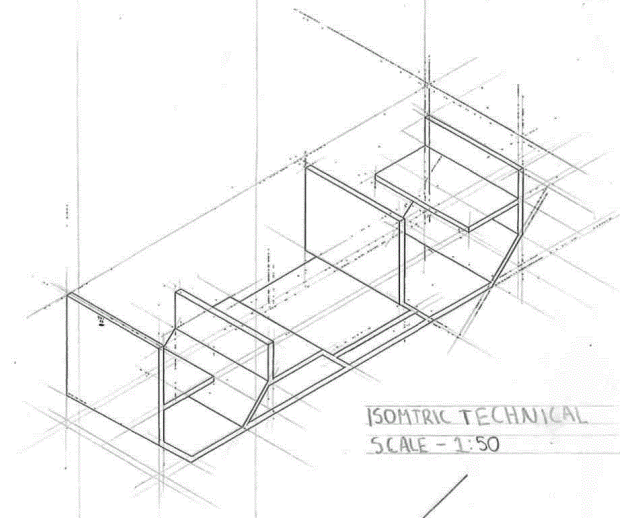
Level 1 Design and Visual Communication 2024

92003 Use instrumental drawing techniques to communicate own product or spatial design outcome

EXEMPLAR – PRODUCT DESIGN

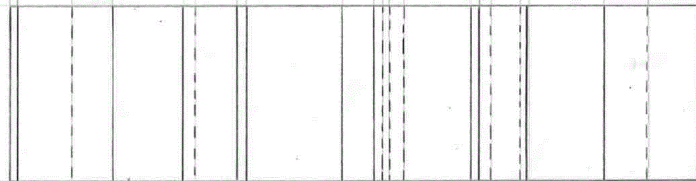
Achievement

TOTAL 03

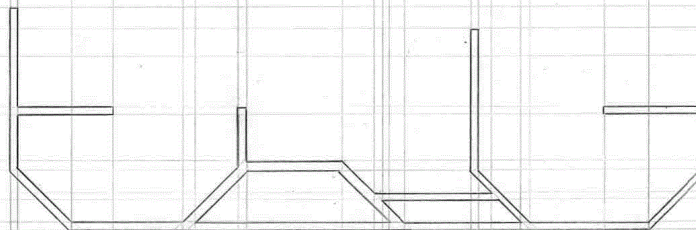


ISOMETRIC TECHNICAL
SCALE - 1:50

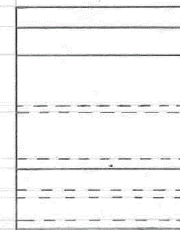
TOP VIEW



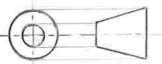
SIDE VIEW - LEFT

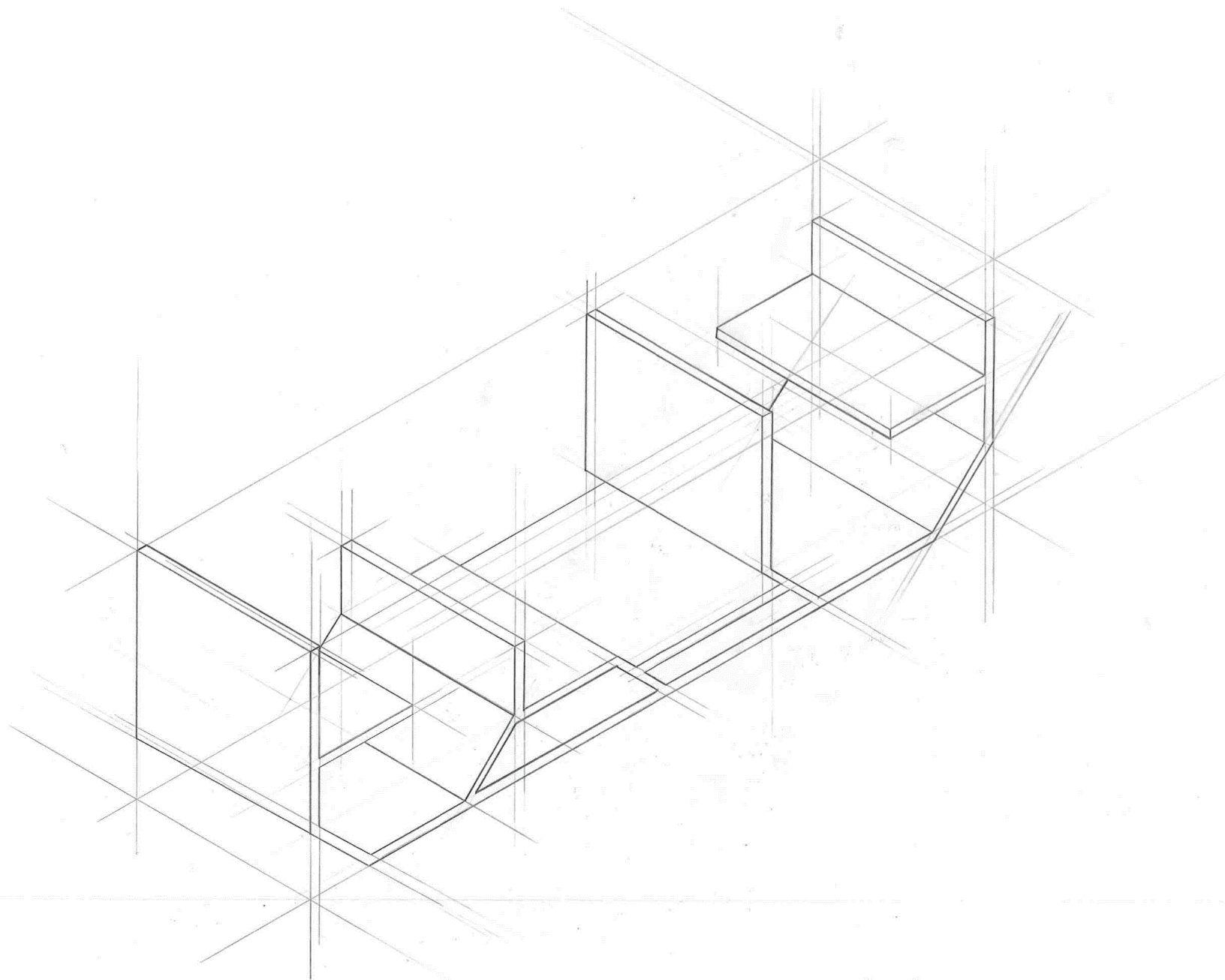


FRONT VIEW



SIDE VIEW - RIGHT





ISOMETRIC TECHNICAL - OUTDOOR SEATING

SCALE 1:20

25/09/2024

Achievement – product design

Subject: Design and Visual Communication

Standard: 92003

Total score: 03

Grade score	Marker commentary
A3	This submission is for an outdoor seating project. The candidate has constructed a third angle orthographic, showing size through use of a scale. The symbol is drawn correctly although the labelling layout is not accurate. The isometric of the chair shows good understanding of form as well as the different surface areas of the chair. Construction is done accurately but there is no further information in either the paraline or orthographic which shows further understanding of construction or hidden detail.

No part of the candidate's evidence in this exemplar material may be presented in an external assessment for the purpose of gaining an NZQA qualification or award.



Mana Tohu Mātauranga o Aotearoa
New Zealand Qualifications Authority

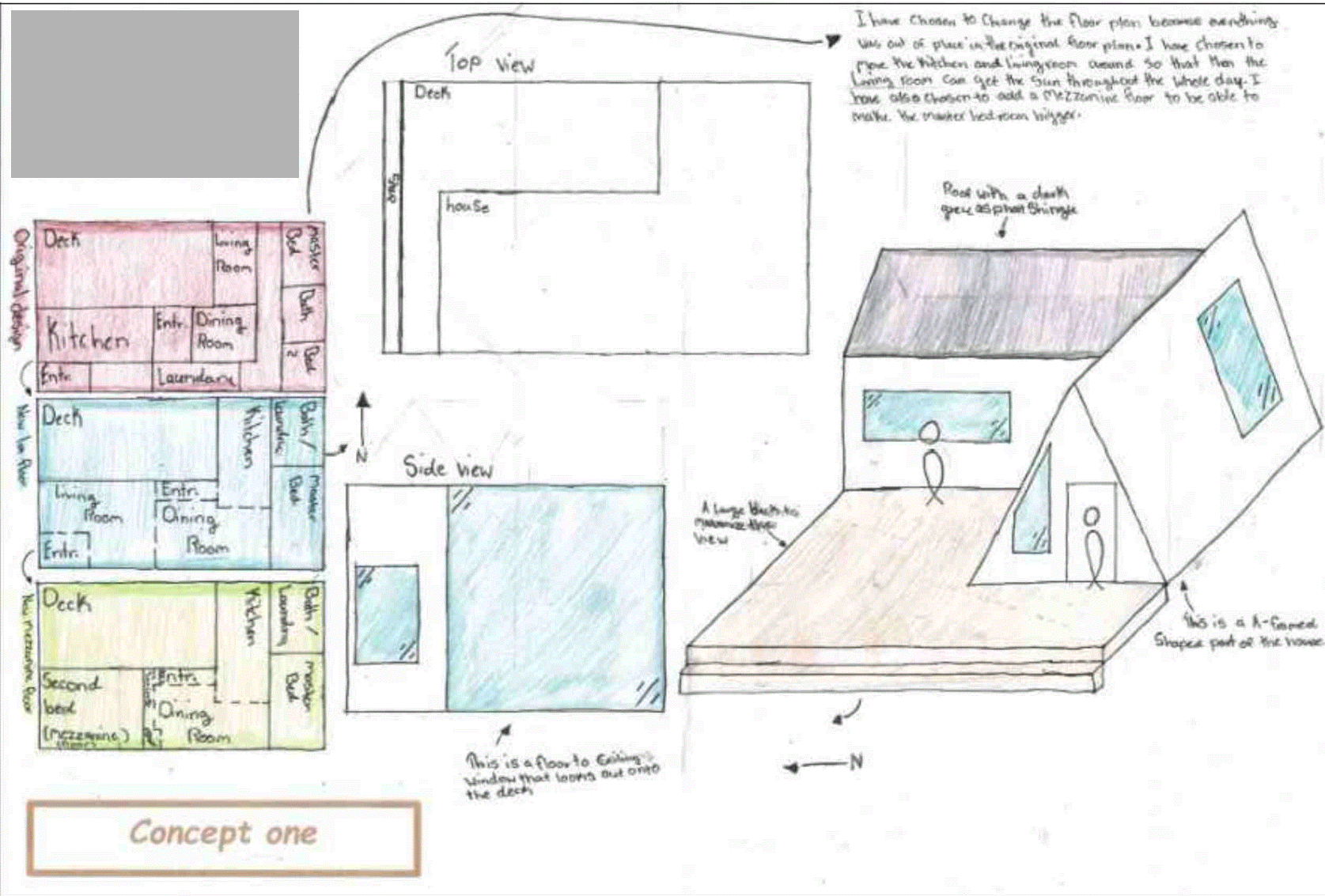
Level 1 Design and Visual Communication 2024

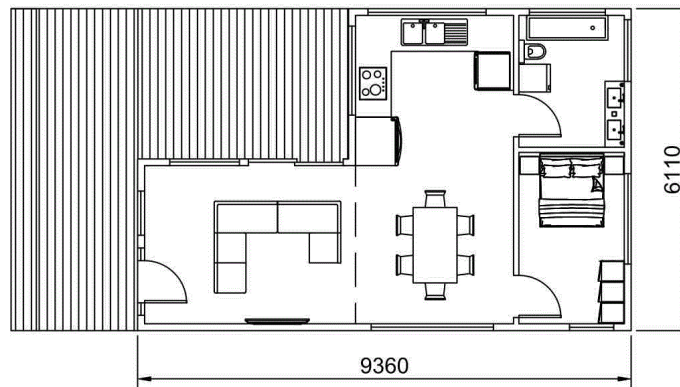
92003 Use instrumental drawing techniques to communicate own product or spatial design outcome

EXEMPLAR – SPATIAL DESIGN

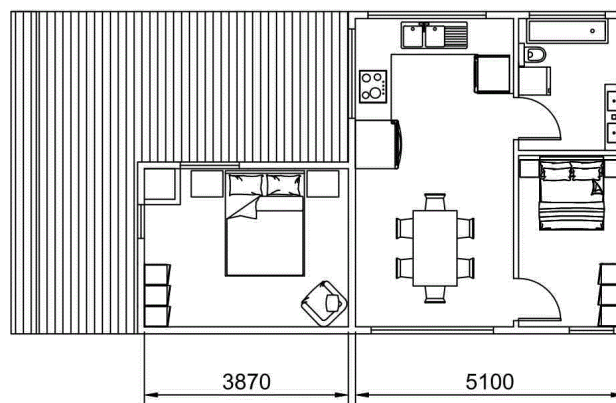
Achievement

TOTAL 03



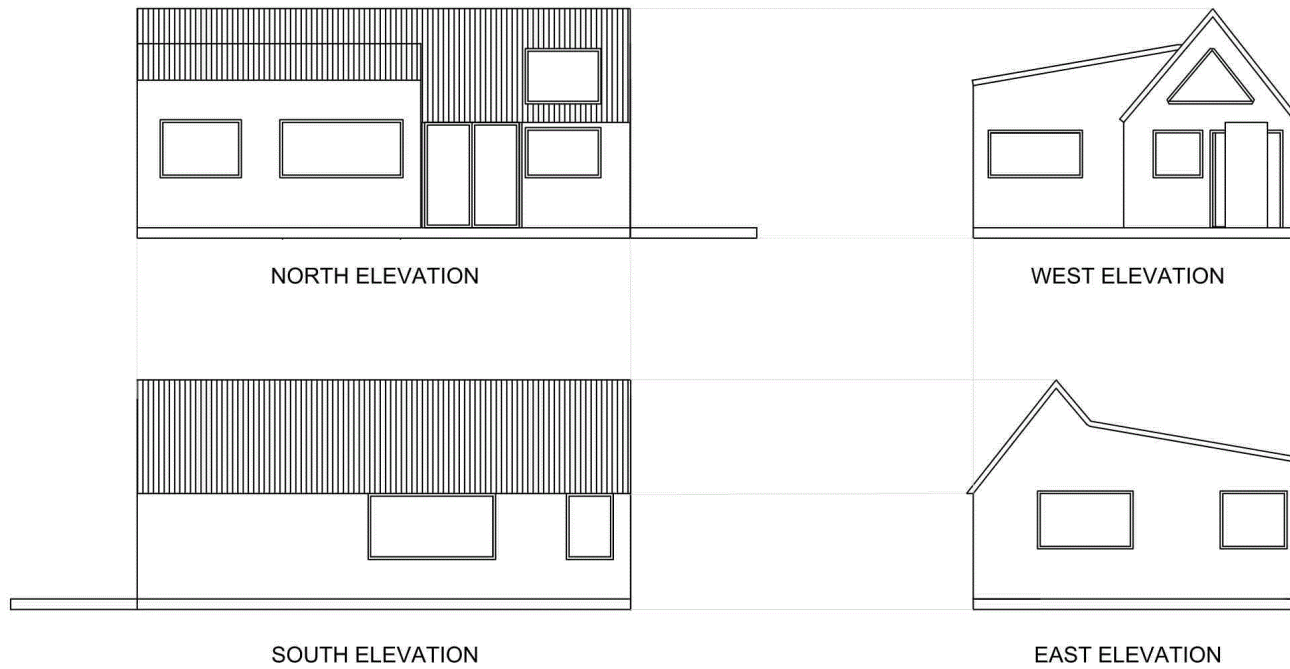


GROUND FLOOR

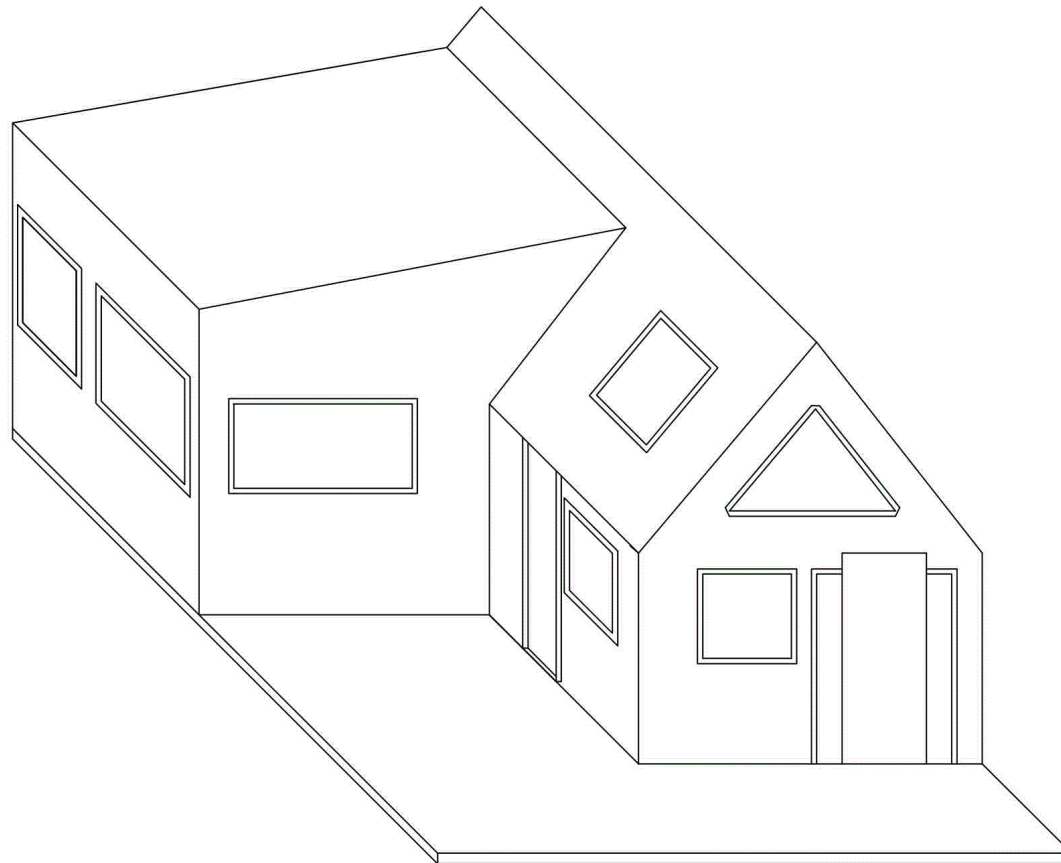


MEZZANINE FLOOR

TITLE LAKE CABIN	
FLOOR PLAN	
DRAWN BY	DATE 18/10/2024
SCALE 1:100	DWG No. 1 of 3



TITLE LAKE CABIN	
ELEVATIONS	
DRAWN BY	DATE 18/10/2024
SCALE 1:100	DWG No. 2 of 3



TITLE LAKE CABIN	
OBLIQUE CABINET VIEW	
DRAWN BY	DATE 18/10/2024
SCALE 1:50	DWG No. 3 of 3

Achievement – spatial design

Subject: Design and Visual Communication

Standard: 92003

Total score: 03

Grade score	Marker commentary
A3	<p>This submission presents a design for a lake cabin. The drawings show conventions for instrumental drawing, with a title block, scale, and some measurements, in the correct format of mm. A floorplan and four orthographic views have been presented with the elevations aligned. The orthographic views are labelled to indicate their orientation, and a suitable scale has been used. An oblique view of the cabin has been drawn to scale that shows the form and some surface features. To achieve a higher grade, further information of interior views or construction details would be expected.</p>