

No part of the candidate's evidence in this exemplar material may be presented in an external assessment for the purpose of gaining an NZQA qualification or award.



Mana Tohu Mātauranga o Aotearoa
New Zealand Qualifications Authority

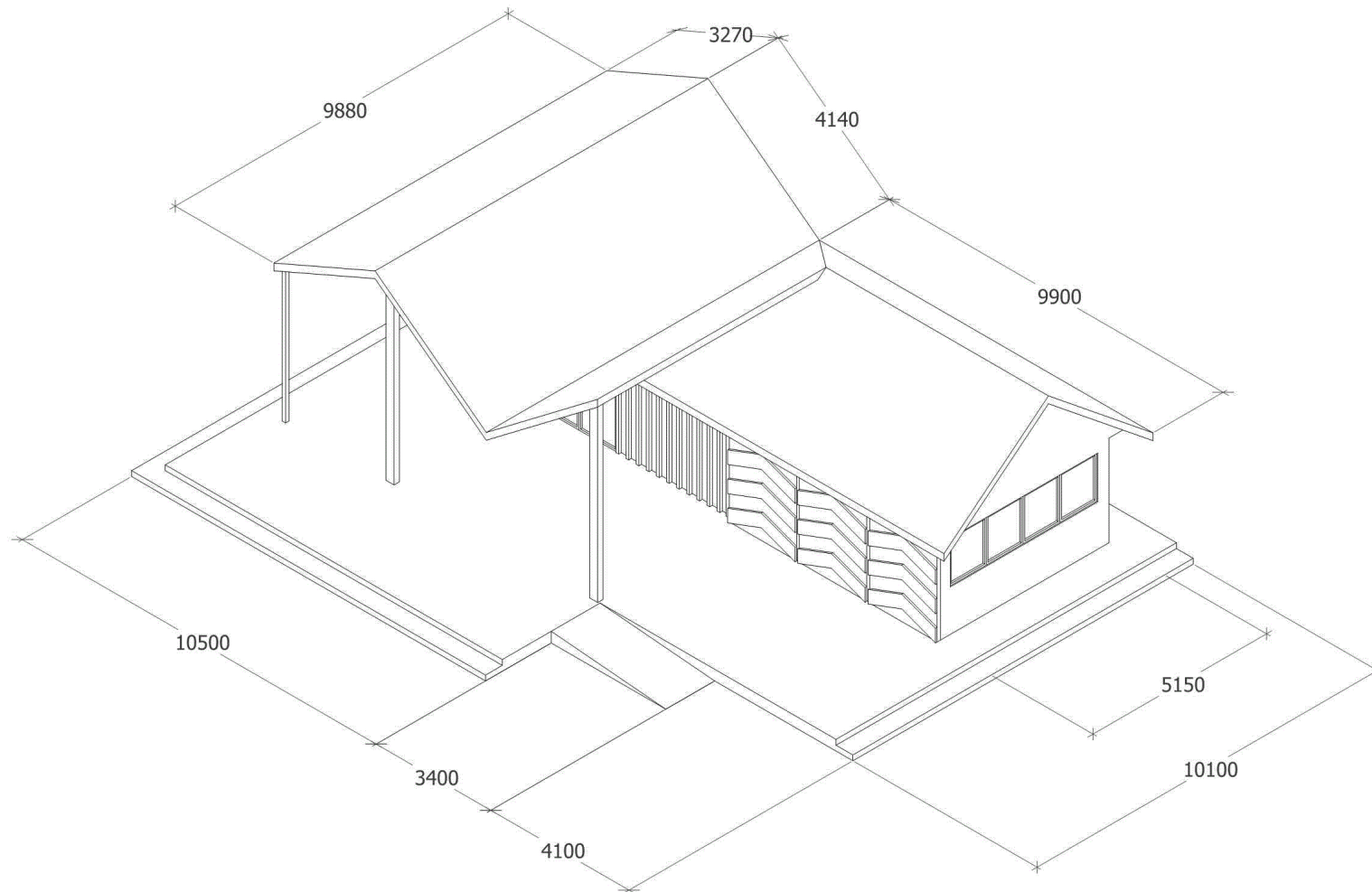
Level 1 Design and Visual Communication 2024

**92003 Use instrumental drawing techniques to communicate
own product or spatial design outcome**

EXEMPLAR – SPATIAL DESIGN

Excellence

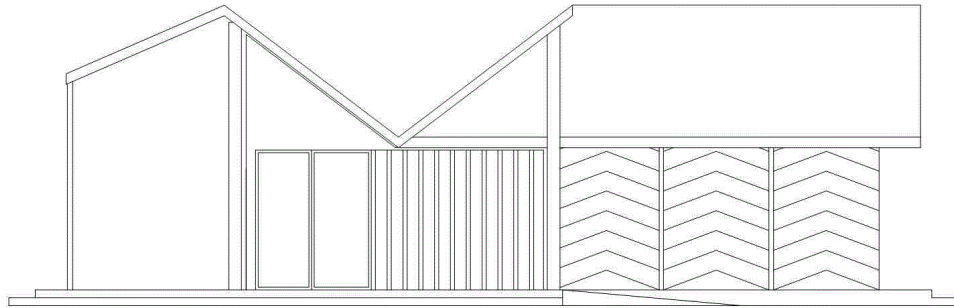
TOTAL 08



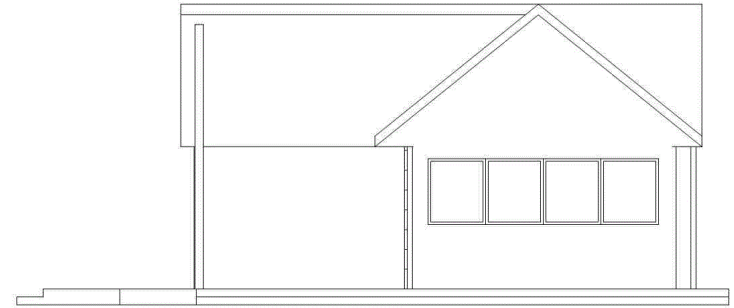
ALL DIMENSIONS IN MM

LEARNING HUB ISOMETRIC VIEW WITH DIMENSIONS

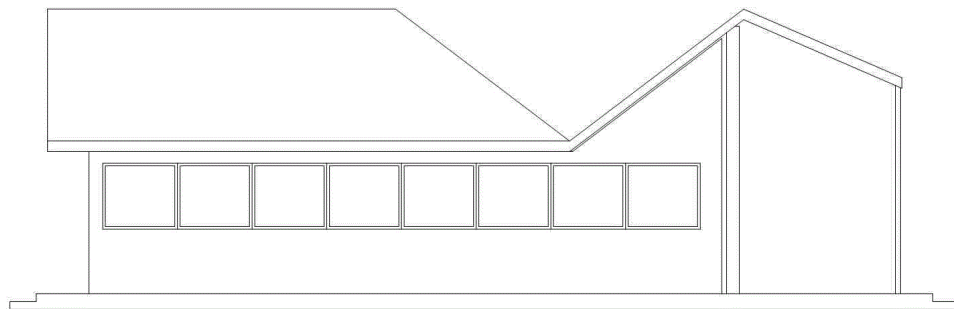
SCALE 1:100



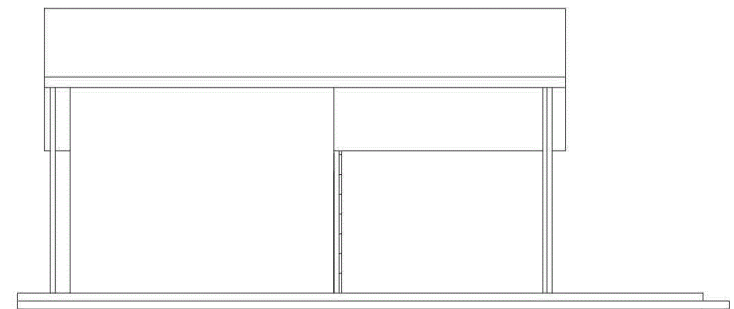
NORTH ELEVATION



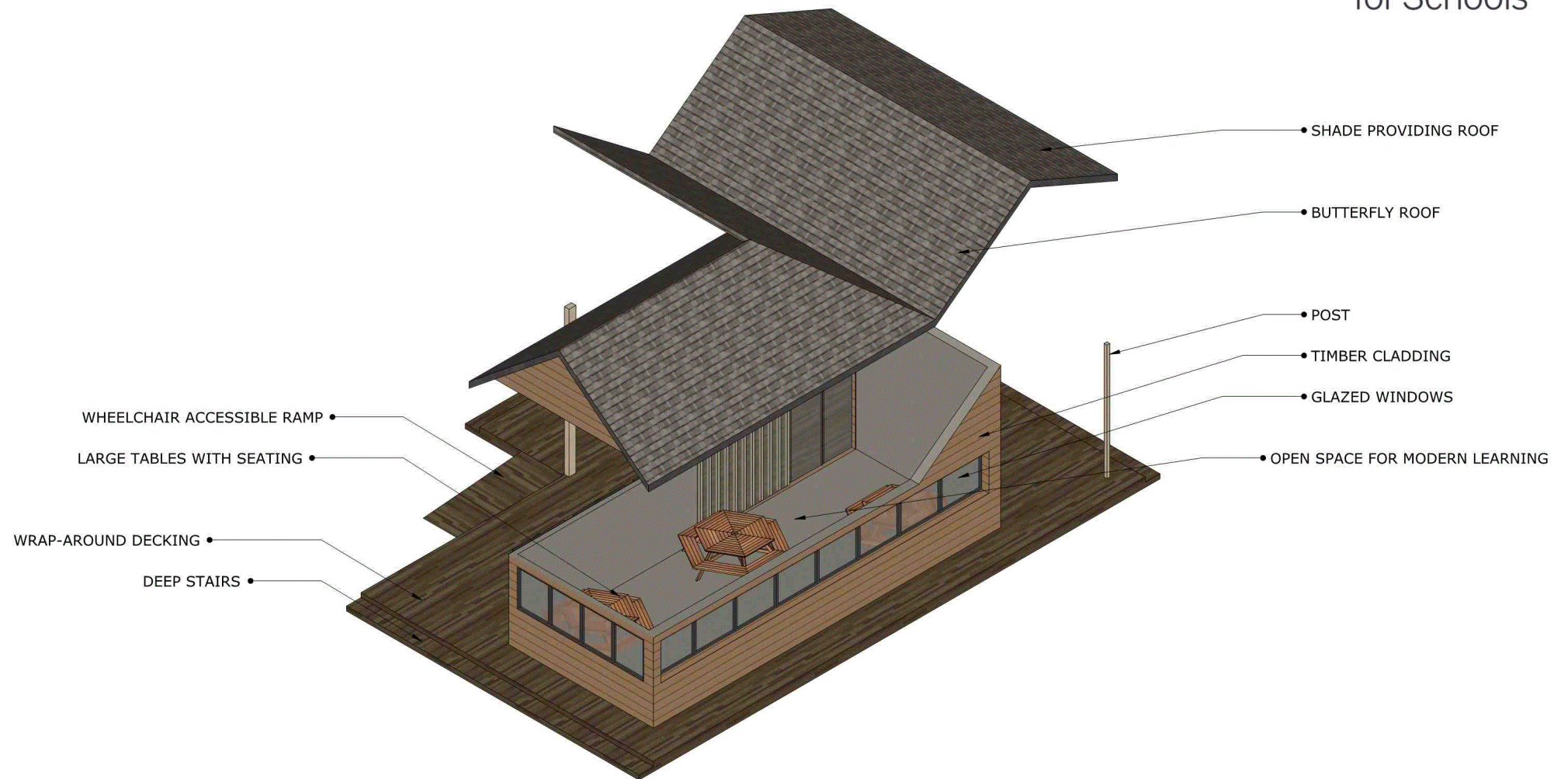
WEST ELEVATION



SOUTH ELEVATION

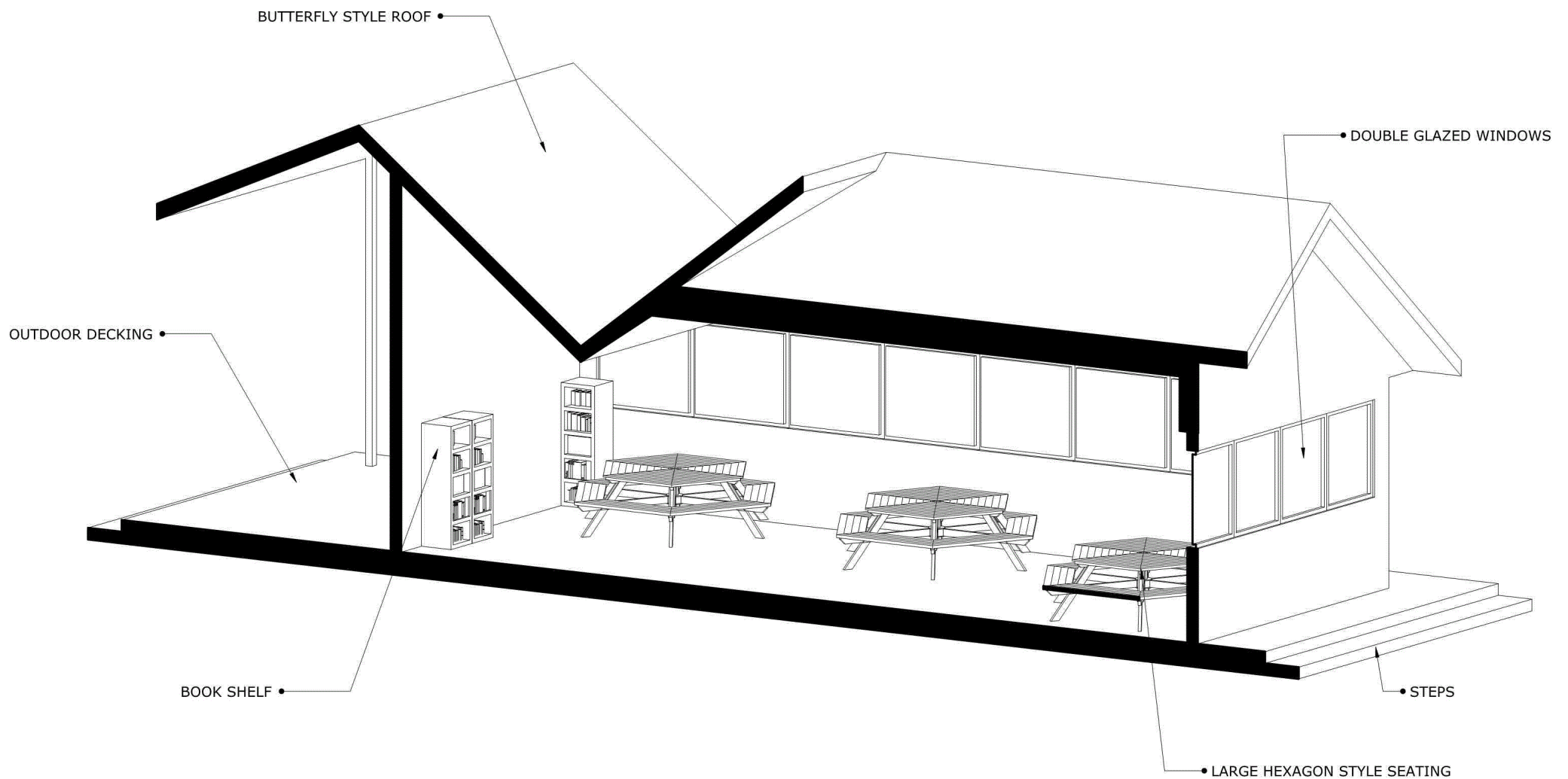


EAST ELEVATION



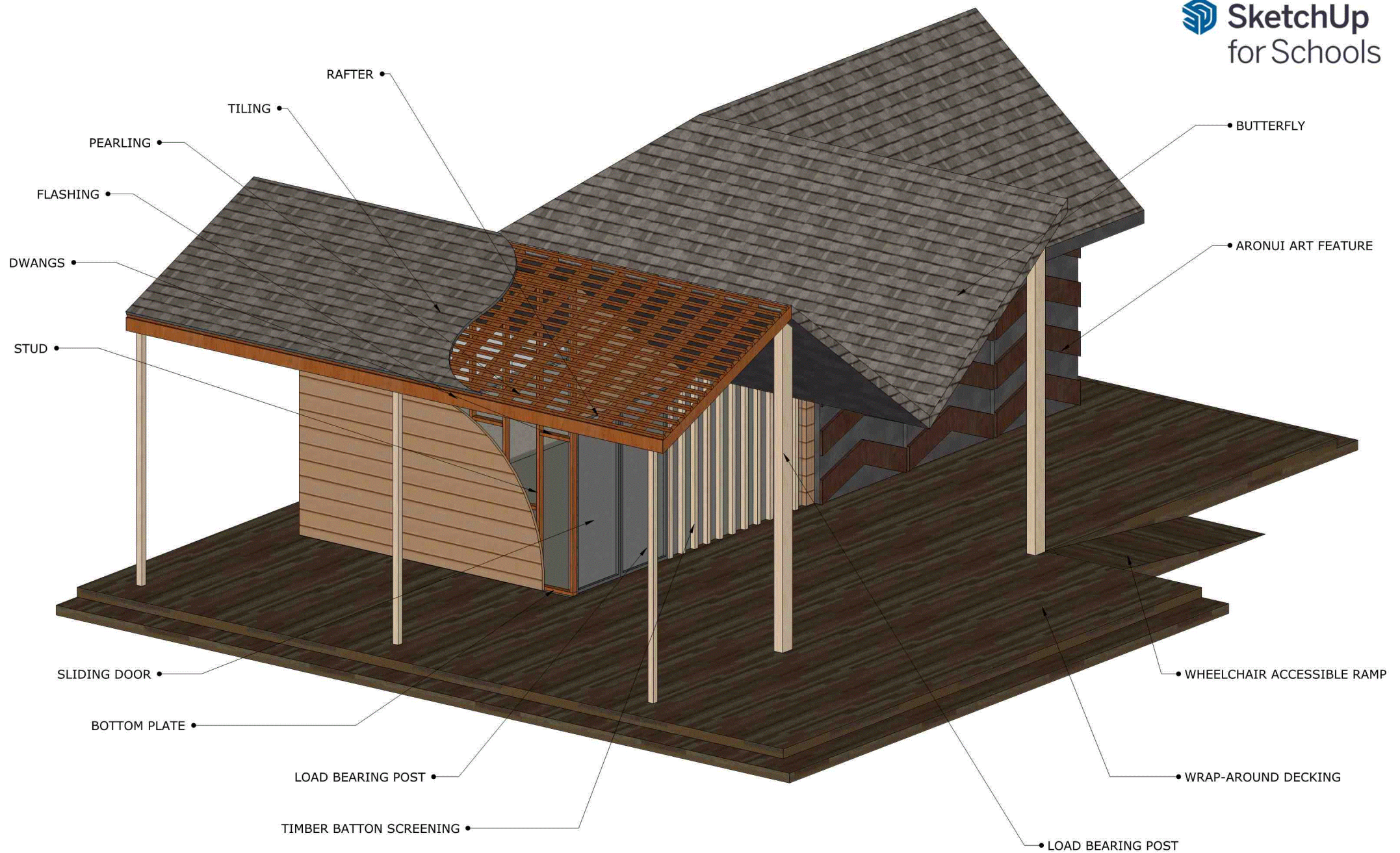
LEARNING HUB ISOMETRIC VIEW WITH ROOF LIFTED

SCALE 1:100



LEARNING HUB TRIMETRIC VIEW WITH VERTICAL SECTION PLANE

SCALE 1:50



LEARNING HUB TRIMETRIC CONSTRUCTION VIEW

SCALE 1:50

Excellence – spatial design

Subject: Design and Visual Communication

Standard: 92003

Total score: 08

| Grade score | Marker commentary |
|-------------|--|
| E8 | <p>This submission is for a learning hub. The candidate has used a CAD program to complete the work and has consistent title blocks across all drawings with accurate descriptions for each drawing and providing a scale. The measurements on the paraline drawing provide a clear indication of size. Although there is no plan view, the elevations are clearly labelled and aligned. The annotated exploded paraline shows interior space but also offers information about the materials. Page four shows more information of the interior and page five includes a detailed understanding of potential construction of a building.</p> <p>Although candidates do not need to complete both internal space information and construction information, for a simple building structure such as in this submission it allows a full understanding of the building layout and potential construction to be shown clearly and precisely.</p> |

No part of the candidate's evidence in this exemplar material may be presented in an external assessment for the purpose of gaining an NZQA qualification or award.



Mana Tohu Mātauranga o Aotearoa
New Zealand Qualifications Authority

Level 1 Design and Visual Communication 2024

92003 Use instrumental drawing techniques to communicate own product or spatial design outcome

EXEMPLAR – PRODUCT DESIGN

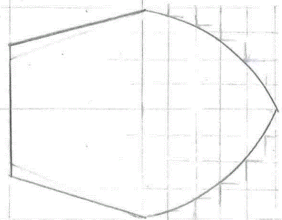
Excellence

TOTAL 08

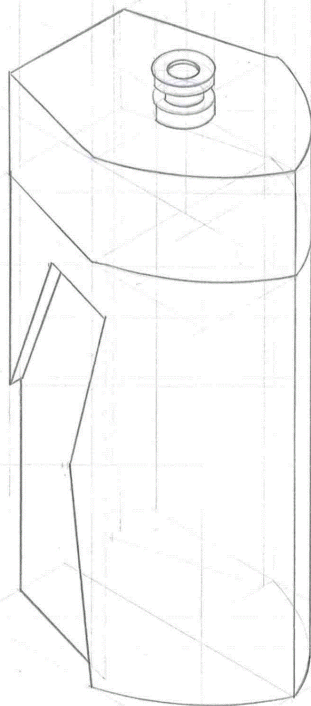
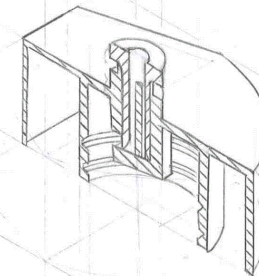
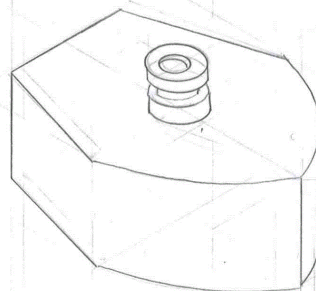
AERO BIKE DRINK BOTTLE

TRIATHLON & CYCLING

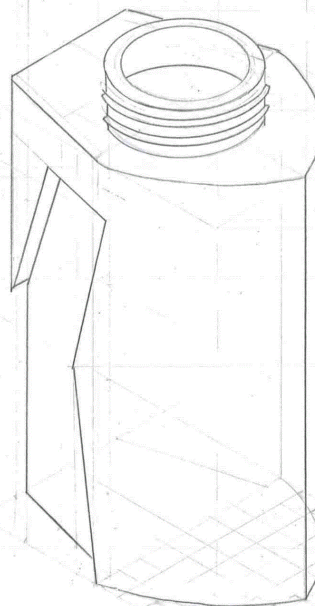




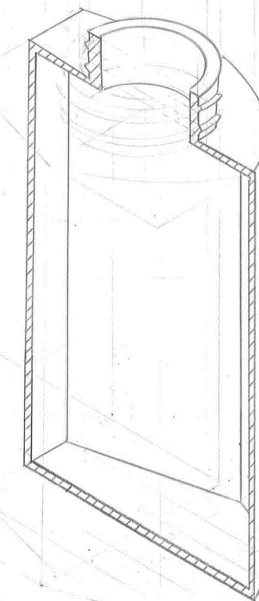
CURVE PLOT



ISOMETRIC



EXPLODED ISOMETRIC

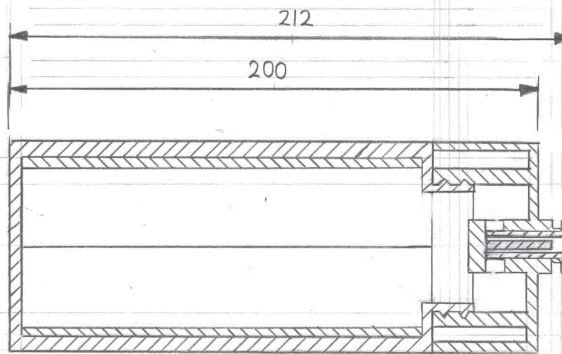
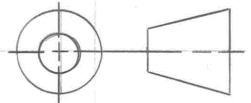


SECTIONAL ISOMETRIC

PARALINE DRAWING OF AERO BIKE DRINK BOTTLE

SCALE: 1:2

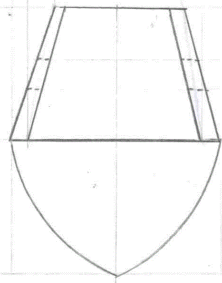
DATE: 27/08/24



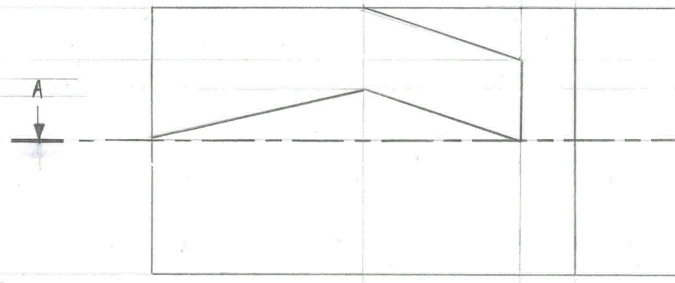
SECTION AA

HP
VPI VP

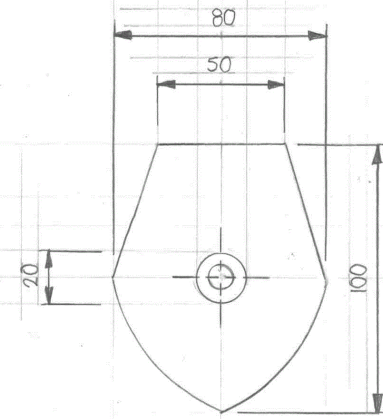
VP2



LEFT HAND ELEVATION



FRONT ELEVATION



RIGHT HAND ELEVATION

Excellence – product design

Subject: Design and Visual Communication

Standard: 92003

Total score: 08

| Grade score | Marker commentary |
|-------------|---|
| E8 | <p>This submission is for a drink bottle. The candidate has produced a clear and accurate third angle orthographic, with measurements, symbol, title block, and labelling. The paraline drawings are precise and show both the internal shape of the bottle as well as elements of the thread and sipper part that match the information on the orthographic. The ordinates have been clearly thought through to ensure the shape of the bottle is consistent in the paraline drawings.</p> |