

No part of the candidate's evidence in this exemplar material may be presented in an external assessment for the purpose of gaining an NZQA qualification or award.



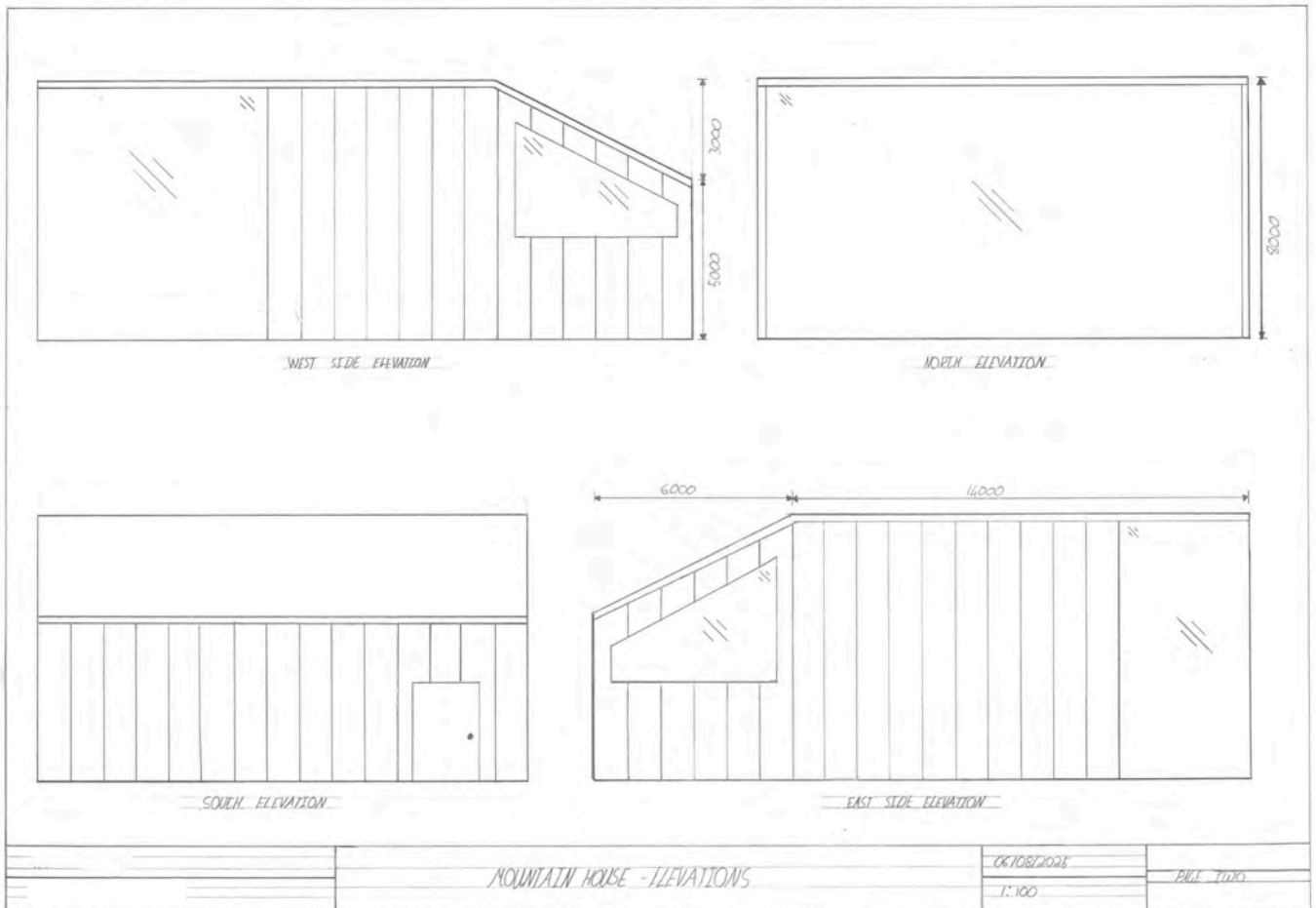
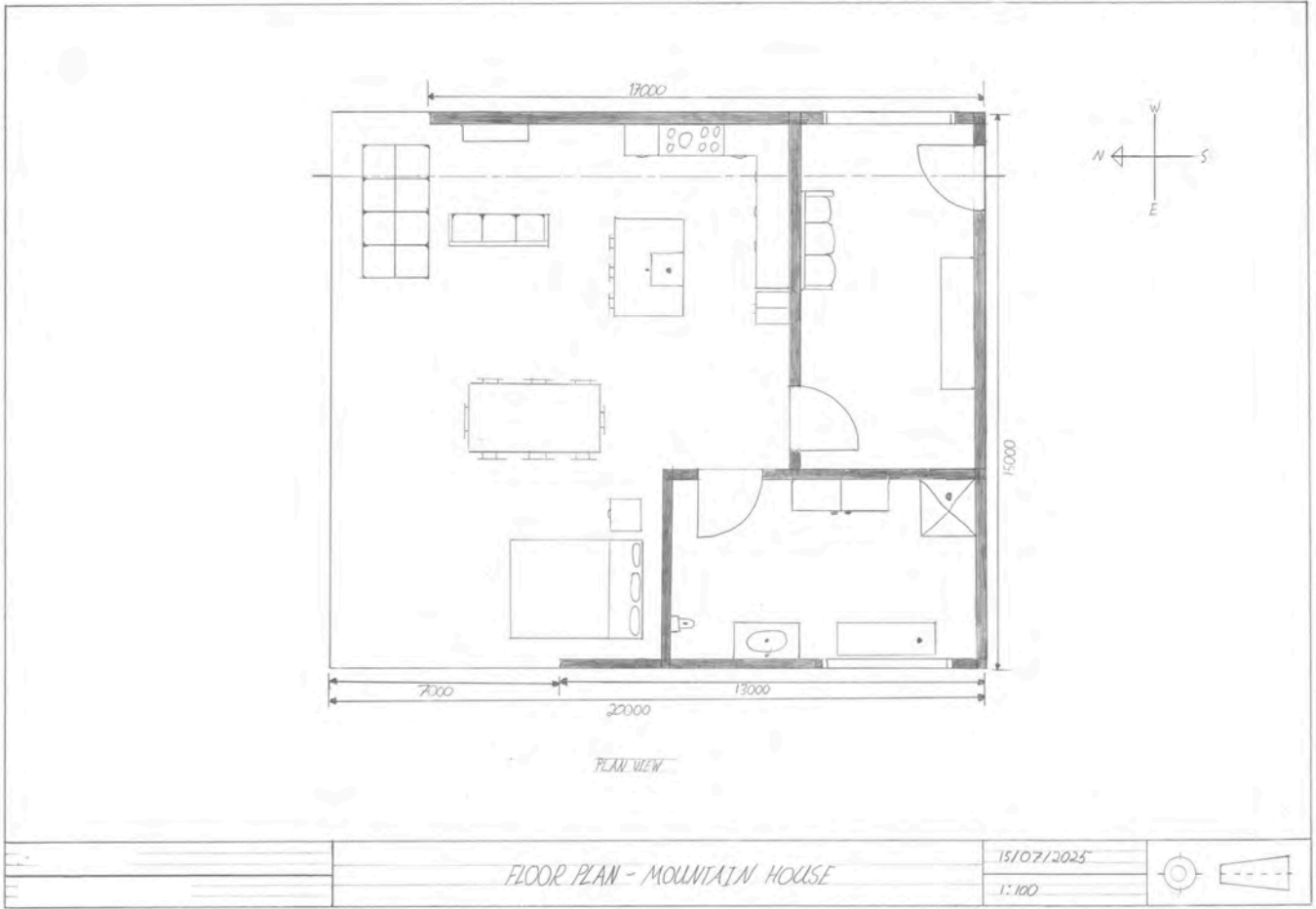
Mana Tohu Mātauranga o Aotearoa
New Zealand Qualifications Authority

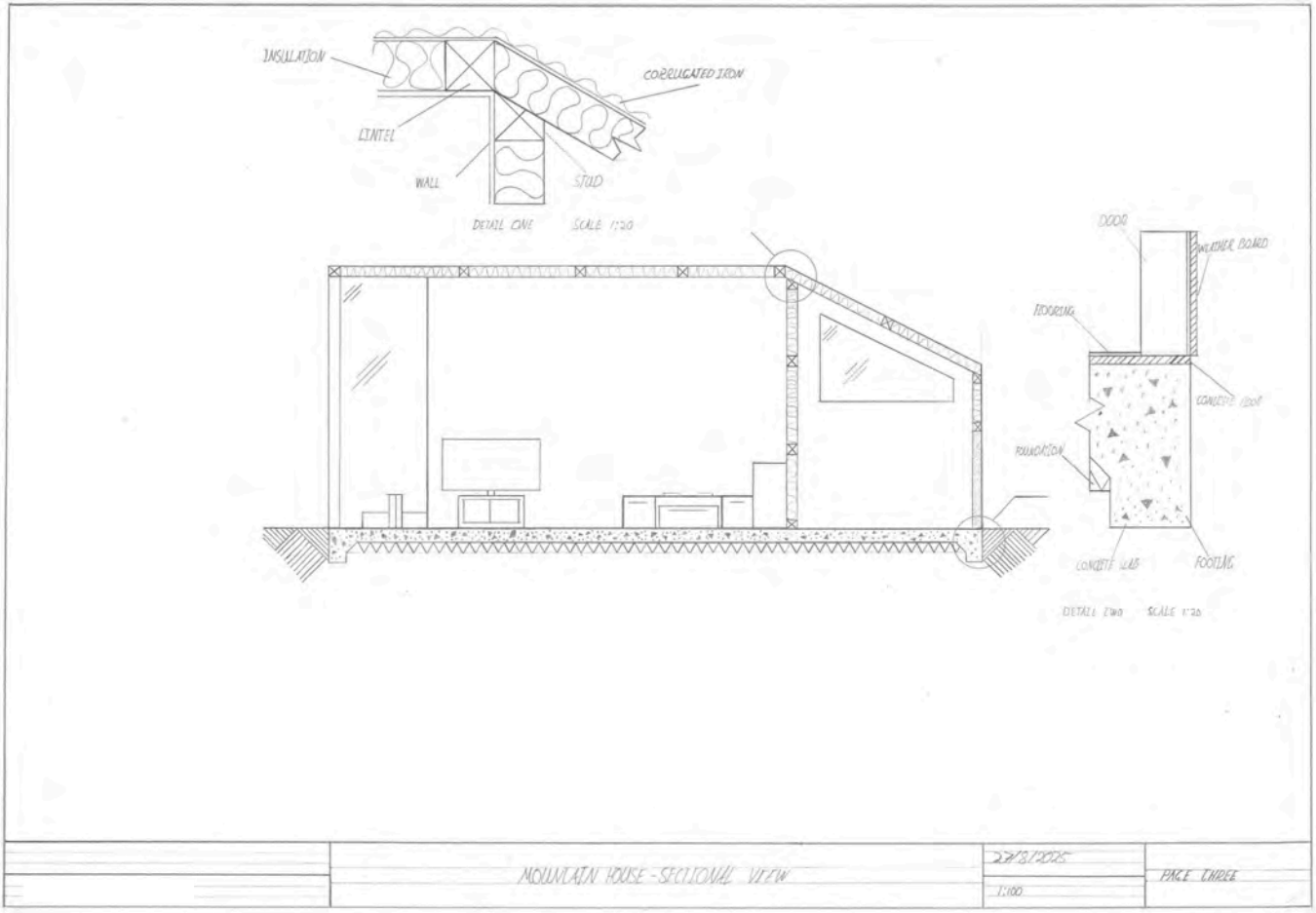
Level 2 Design and Visual Communication 2025

**91338 Produce working drawings to communicate
technical details of a design**

EXEMPLAR – SPATIAL DESIGN

Achievement



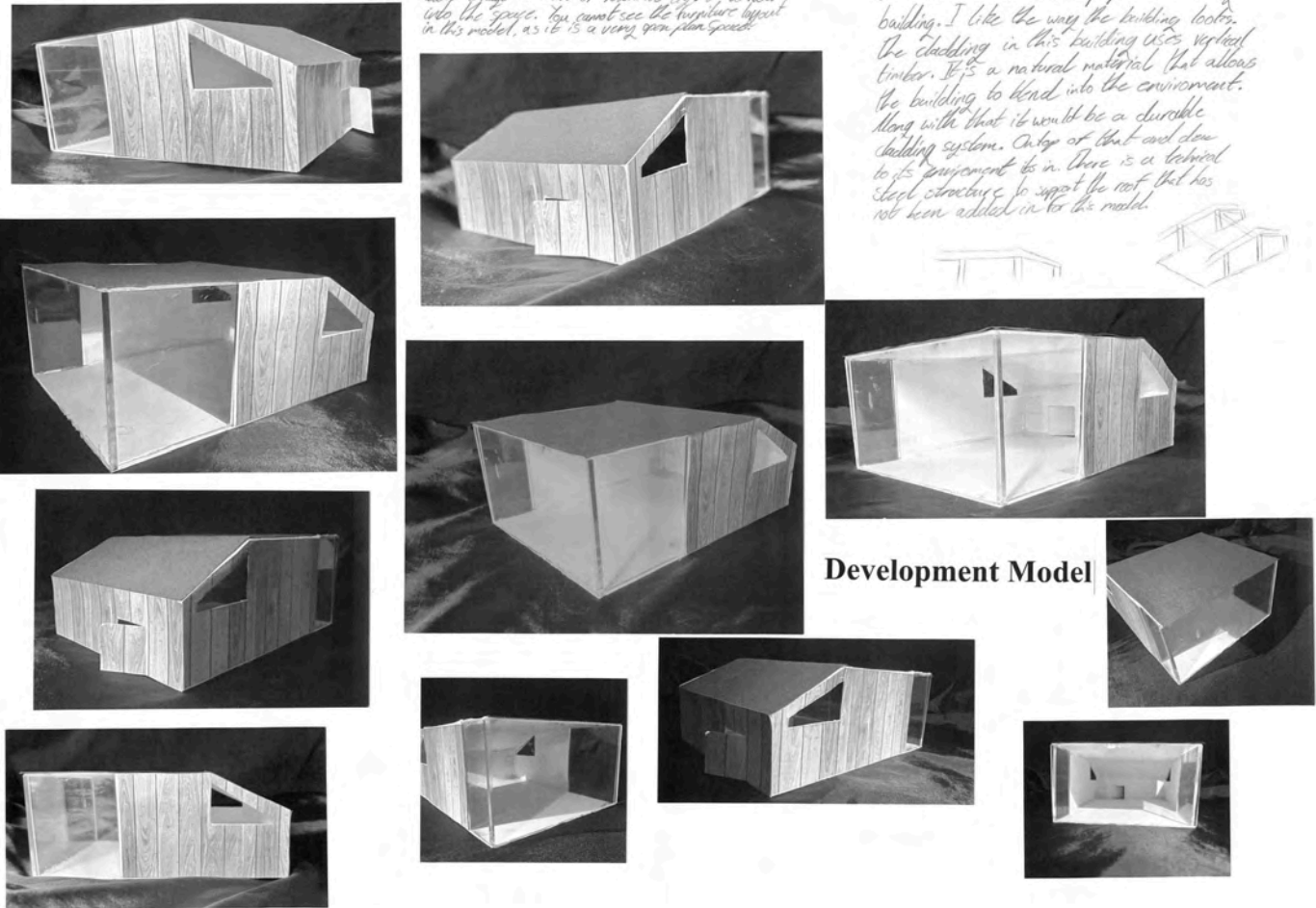


The massive windows work well on this design. They allow a huge amount of natural light to flow into the space. You cannot see the furniture layout in this model, as it is a very open plan space.

This model confirms the proportions of my building. I like the way the building looks. The cladding in this building uses vertical timber. It's a natural material that allows the building to blend into the environment. Along with that it would be a durable cladding system. On top of that and due to its component to it there is a technical steel structure to support the roof that has not been added in for the model.



Development Model



Achievement

Subject: Design and Visual Communication

Standard: 91338

Total score: 03

Marker commentary

This set of spatial design drawings are linked through the name in the title block and the north symbol indicated on the floor plan, which is correct to the labelled elevations. There is a cross-section provided but this doesn't link to the floor plan. There is a centre line through the floor plan, but this isn't indicated as being a cutting plane. The floor plan conventions leave some ambiguity as to what is happening with the northern wall, which might be glass. Given that the cross-section doesn't link to the floor plan, the details, especially the footing, do not show the correct cladding that might be connected back to the elevations.

No part of the candidate's evidence in this exemplar material may be presented in an external assessment for the purpose of gaining an NZQA qualification or award.

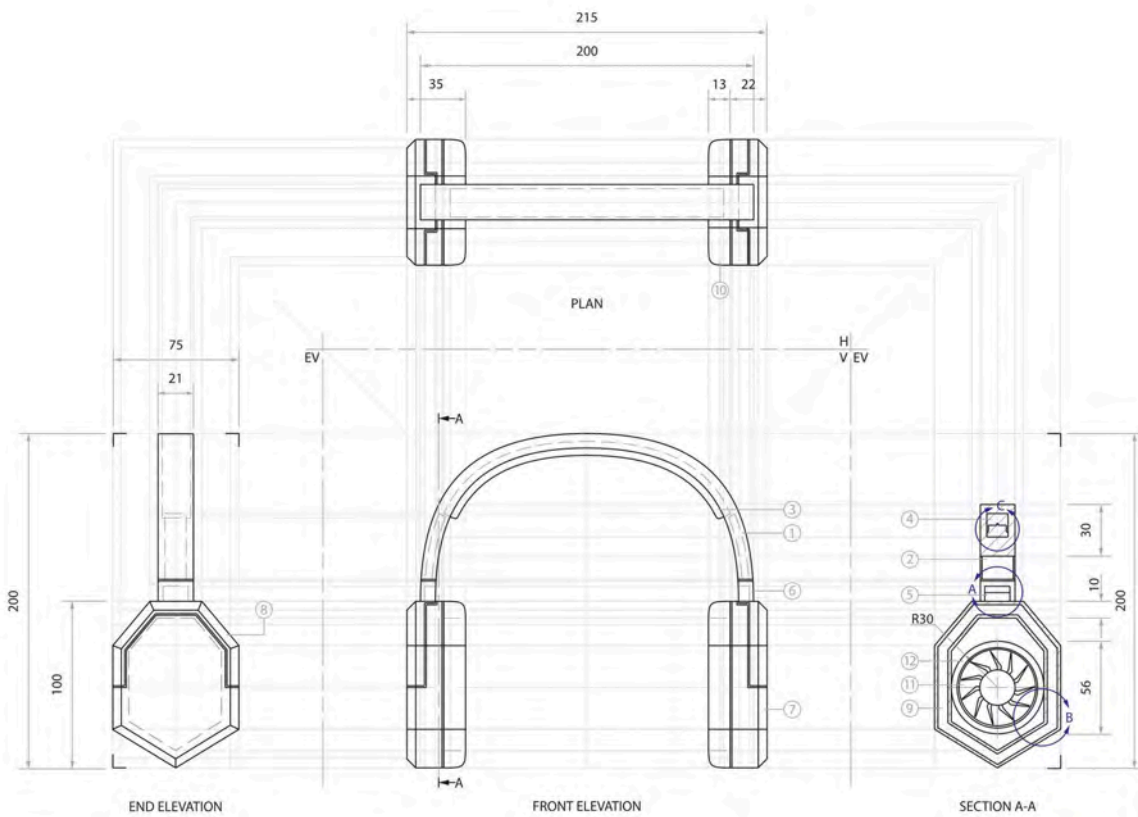


Level 2 Design and Visual Communication 2025

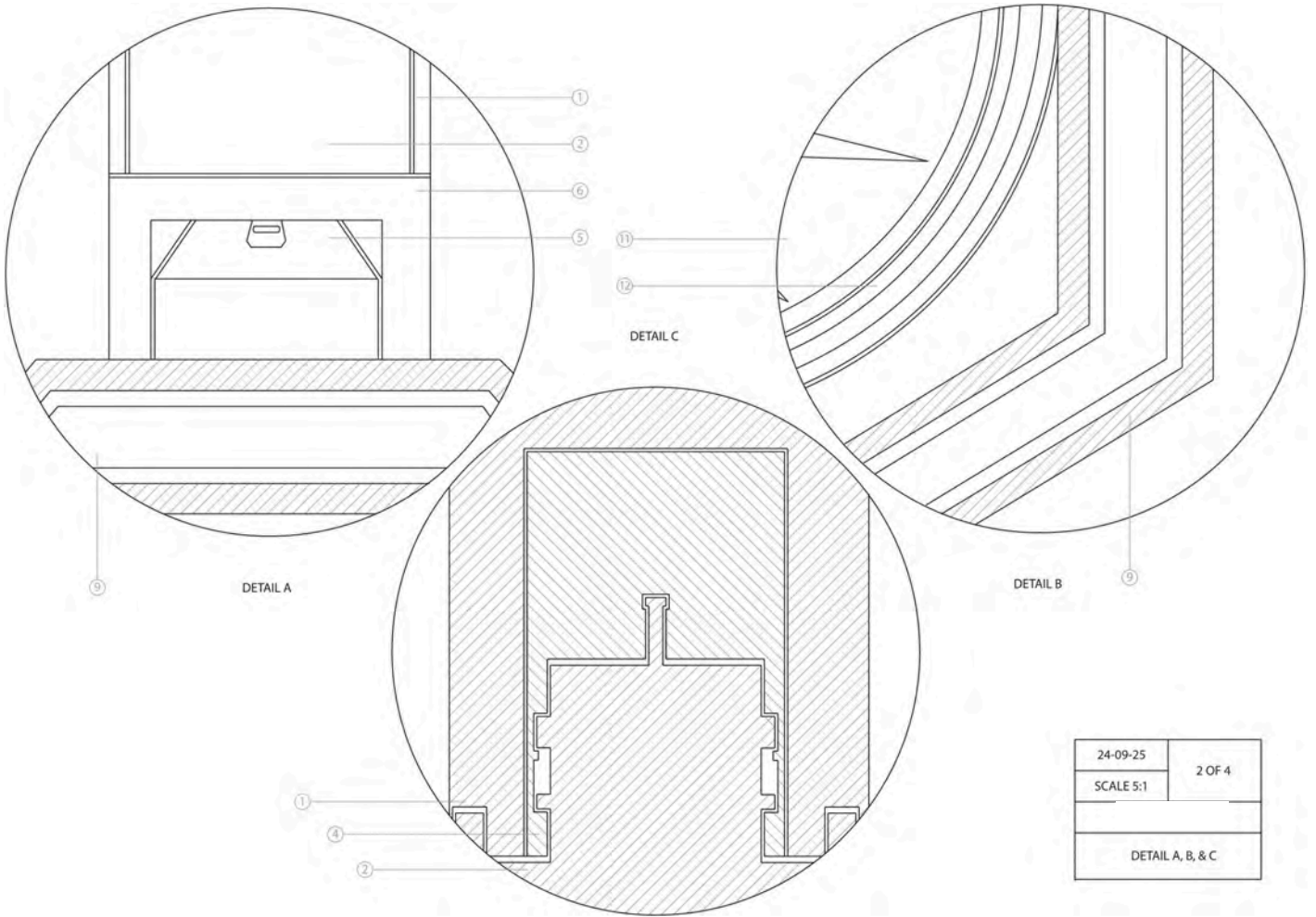
**91338 Produce working drawings to communicate
technical details of a design**

EXEMPLAR – PRODUCT DESIGN

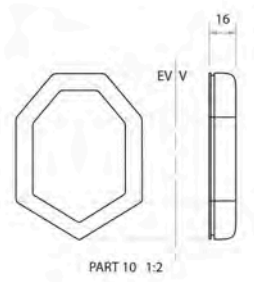
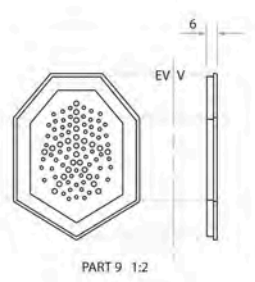
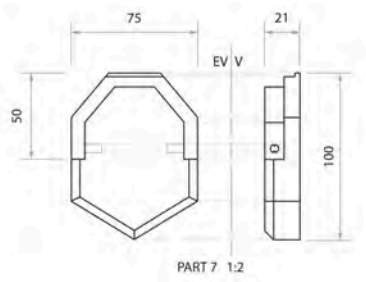
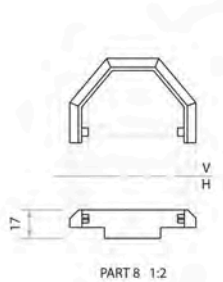
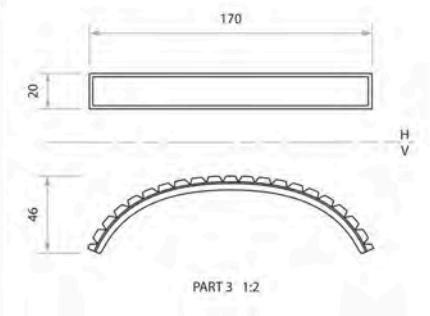
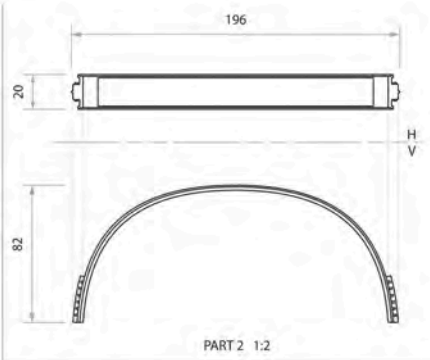
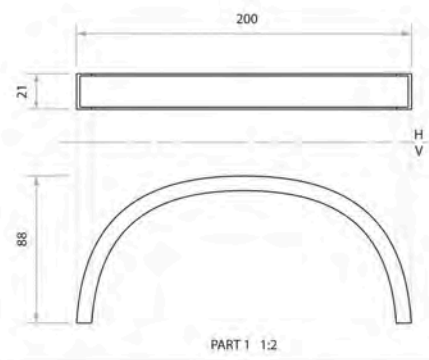
Achievement



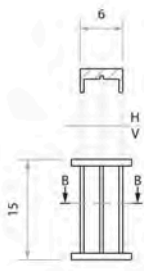
04-08-25	1 OF 4
SCALE 1:2	
ORTHOGRAPHIC PROJECTION HEADPHONES	



24-09-25	2 OF 4
SCALE 5:1	
DETAIL A, B, & C	

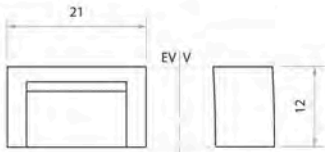


03-10-25	3 OF 4
SCALE 1:2	
PARTS DRAWINGS	

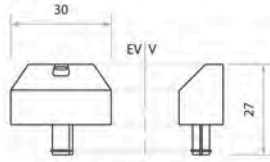


PART 4 1:1

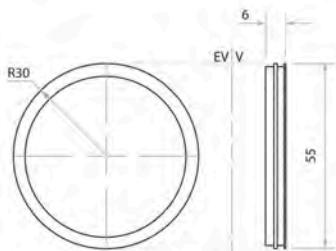
13	BATTERY	1	LITHIUM ION
12	DRIVER SUSPENSION	2	RUBBER
11	DYNAMIC DRIVER	2	BERYLLIUM
10	EAR PADDING	2	MEMORY FOAM
9	INNER EAR CASING	2	POLYCARBONATE
8	CONNECTING ARM	2	POLYCARBONATE
7	OUTER EAR CASING	2	POLYCARBONATE
6	JOINT CASING	2	POLYCARBONATE
5	JOINT	2	POLYCARBONATE
4	HEADBAND EXTENDER	2	POLYCARBONATE
3	HEADBAND PADDING	1	MEMORY FOAM
2	INNER HEADBAND CASING	1	POLYCARBONATE
1	OUTER HEADBAND CASING	1	POLYCARBONATE
ITEM	PART NAME	QTY	MATERIAL



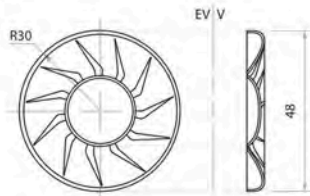
PART 6 2:1



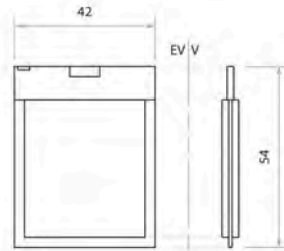
PART 5 2:1



PART 12 1:1



PART 11 1:1



PART 13 1:1

09-10-25	4 OF 4
SCALE VARIED	
PARTS DRAWINGS	

Achievement

Subject: Design and Visual Communication

Standard: 91338

Total score: 03

Marker commentary
<p>This is a related set of drawings linked through the page sequence in the title block. The first page is well drawn showing the plan and elevations of the headphones. This page also includes a section view, but this and the subsequent details don't add anything to the set to make them informative or clarifying information about the construction or assembly. The components don't really add anything more than what is seen in the elevations.</p>