

No part of the candidate's evidence in this exemplar material may be presented in an external assessment for the purpose of gaining an NZQA qualification or award.



Mana Tohu Mātauranga o Aotearoa
New Zealand Qualifications Authority

Level 1 Design and Visual Communication 2025

**92002 Develop product or spatial design ideas
informed by the consideration of people**

EXEMPLAR

Merit

TOTAL 05

O = Considerations of people

Concept One



Corrugated iron is used for the roofing because it is very durable, lightweight, and has a long life span. All these things make it easy to transport to building site, last a long time/not needing repaired and help the drainage of precipitation.

2 walls between beds 1-2 and 3-4 this is to save space but also allow people to not climb over each other when getting into a top bunk.



Floor Plan

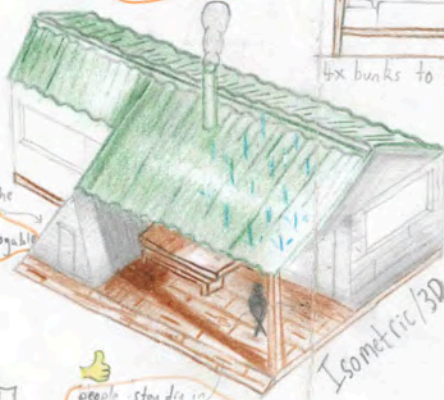


Fireplace

A fireplace is conveniently positioned next to the dining table where people are likely to be when they are out of their warm beds/sleeping bags. This keeps everyone warm at all times and helps everyone enjoy their time.



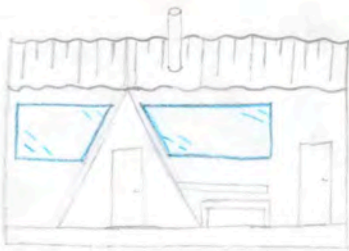
An entryway for walkers to take off and store the equipment so that inside the main room stays clean. This lets everyone have an enjoyable and clean stay.



Isometric/3D



people stay dry in wet weather when eating outside or hanging out on the deck because of the overhanging roof.



Main Elevation

Materials for outside walls:

Colour Steel



- Low maintenance
- Handle weather very well.
- Durable
- Fire resistant
- Lightweight

Timber weatherboards



- Provides good insulation
- Aesthetically pleasing
- Easy to repair
- Breathable material
- Sustainable

Hardiflex / Cement board



- Durable
- Handle weather very well
- Rot-proof
- Fire resistant
- Provide sound-proofing

O = Considerations of people

Concept Two

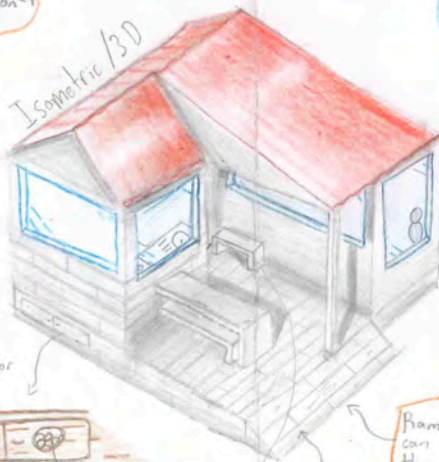
Uncovered table and seats on the deck so people can hang out or enjoy meals in nice weather.



Kitchen and dining area are close together so people don't have to carry their food a long way.



Isometric/3D



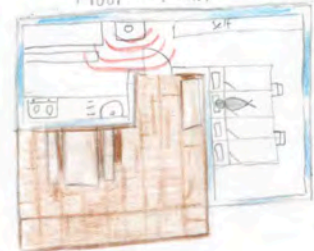
Fire-wood storage for inside fire-place



Enlargement a section

Ramp so tired walkers can get inside easier than going up stairs.

Floor Plan



Fireplace for extra warmth near the kitchen and dining space to keep people warm when they are out of their beds/sleeping bags.

Main Elevation



Possible materials for the roofing:

Colour Steel



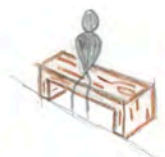
- Fire resistant
- Lightweight
- Weather resistant
- Low Maintenance

Corrugated Iron



- Lightweight
- Durable
- Great drainage
- Weather resistant

Seat placed by door undercover so trampers can sit undercover, not get wet and take their boots off so that they don't make a mess inside the hut.



O = Considerations of people



Main Elevation

Concept Three

Steep roof to allow for easy snow or rain run-off/drainage

Isometric / 3D

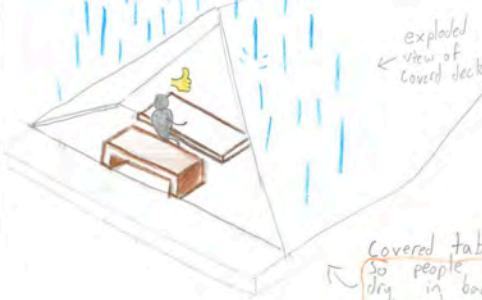


Section view

4x bunks to sleep 8 people



Raised deck and so trampers can sit and take their dirty boots off so that the inside of the hut stays clean and tidy.



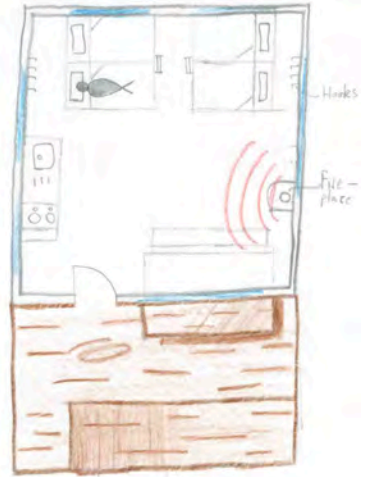
exploded view of covered deck

Ramp because its easier for tired trampers to walk up then stairs.



Covered table on deck so people can stay dry in bad weather and eating outside

Floor Plan



O = Considerations of people

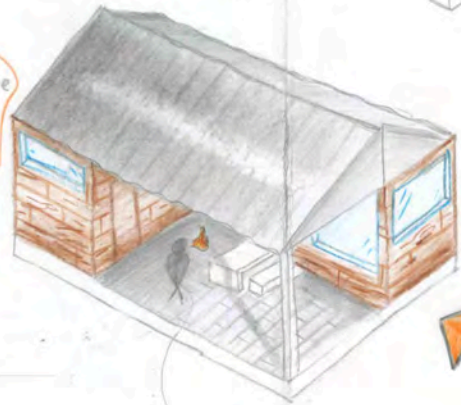
Concept Four



stays asleep when people enter - late

There are 2 doors in this hut 1, near the beds and the other closer to the kitchen/dining area. This is so that if people come in late they can use the door away from the sleeping people so they don't wake anyone.

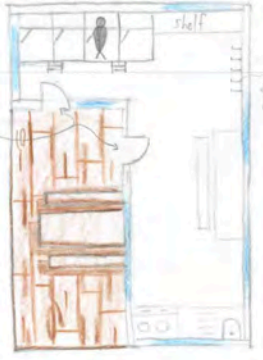
Isometric / 3D



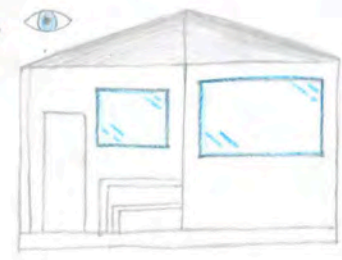
- Timber weather boards on outside walls because:
 - provides natural and good insulation
 - Aesthetically pleasing
 - Easy to repair
 - Breathable material
 - Sustainable

The beds are away from the dining/kitchen area so if people are up late cooking they don't wake sleeping people. Also you don't have to carry your food far to eat it on the table.

Floor Plan



Main Elevation



Covered deck so people can stay dry while eating or hanging out with others. This is also a space to take boots off in the dry so inside can stay clean and people can stay in a clean environment.



O = Considerations of people

kitchen away from beds so people up late don't wake sleeping people.

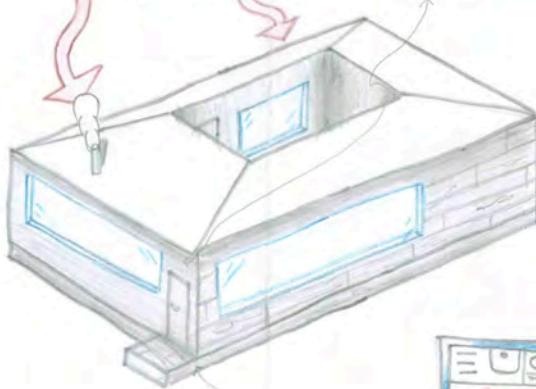
Concept Five

Kitchen is placed close to the inside and outside tables so people don't have to carry their food or drink far.

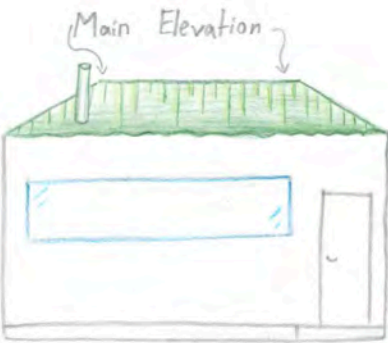


There is a fire place near the kitchen to keep people warm and also near hooks to dry wet jackets or other clothing.

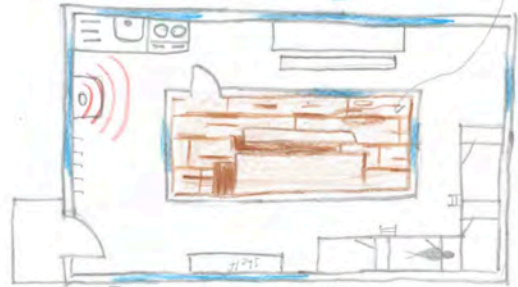
Isometric/3D



Deck in the middle of the building to prevent wind from disturbing people



Cement boards on low skirting because they are "rot-proof". So they will last long while on the damp ground.



Floor Plan

O = Considerations of people

4 bunks to sleep 8 people with hooks and shelves to keep equipment.

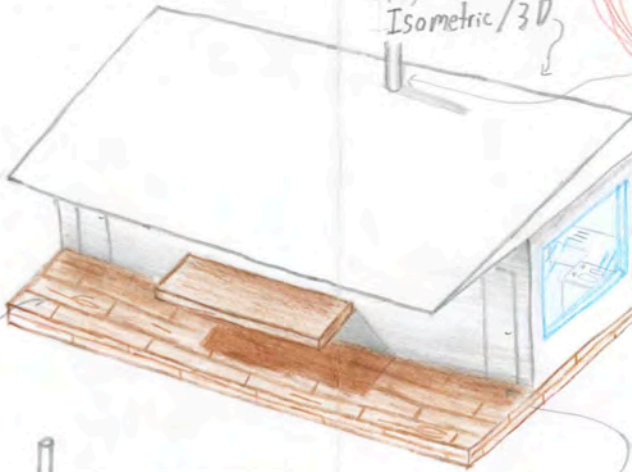
Concept Six

Fireplace with wood storage close to keep people warm while they are out of their sleeping bag or in the kitchen/eating area.



Covered deck so people can eat or hang-out outside in bad weather.

Isometric/3D



Floor Plan

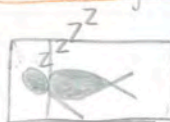


2 doors with one away from the beds so if people come in late they don't wake anyone.

Section view



Main Elevation



Walls

Final choice: The tramping hut will be cement board on the lower level because it is rot-proof against the damp ground. Then just off the ground will be painted and protected timber so there will be little maintenance and the deck will look good. Also the deck will be made from timber.

Options

Development of concept
Final choice of design exterior materials

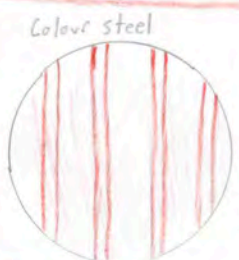
Roofing

Final choice: The roof of the hut will be colour steel because of its amazing weather resistance, longer life span, and lower maintenance needs.

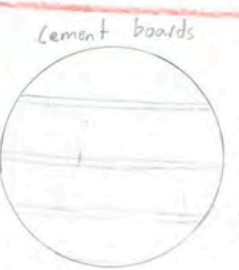
Options



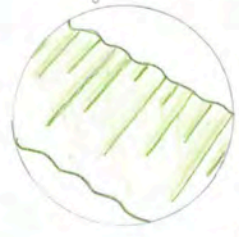
- Natural insulation
- Light weight/easy to work with
- Sustainable
- Easy to replace or repair
- Can be painted
- Aesthetically pleasing



- Durable
- Weather resistant
- Low maintenance
- Light weight/easy to work with
- Fire resistant
- Resistant to animal damage
- Colours that fit surrounding areas



- Rot-proof
- Fire resistant
- Pest-proof
- Low maintenance
- Strong
- Environmentally stable
- Looks good



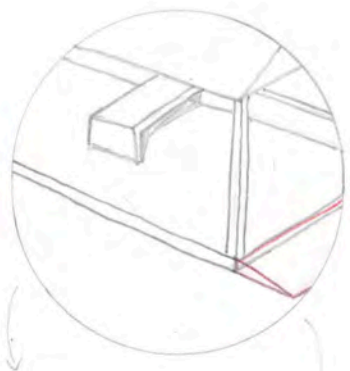
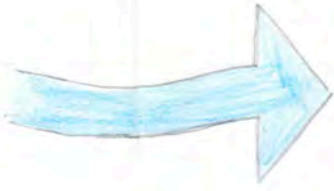
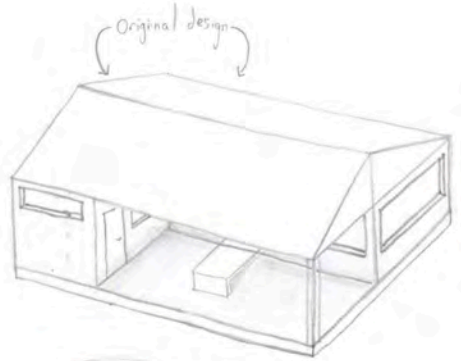
- Durable - so people don't have to repair it often.
- Lightweight - easy for installation.
- Easy drainage - The bumps help collect rain water.
- Cheap - cheap and reliable material that requires low maintenance.
- Fire resistant



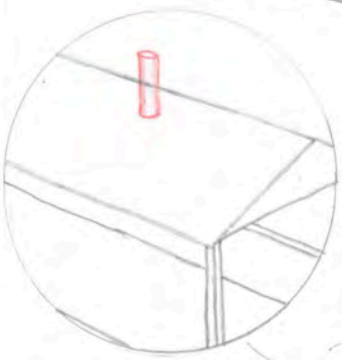
- Protection against rust
- Long lasting and low maintenance - so people don't have to replace it often.
- Aesthetically pleasing - blends in with bush
- Safe for rainwater collection
- Light weight - easy for building with
- Fire resistant

Development of concept
Final choice of design exterior

○ = considerations of people



Problem: Step onto deck
Fix: By adding a ramp it is easier for tired walkers to access this tramping hut. This allows the hut to be more functional and easy to use by tired or handicapped people.

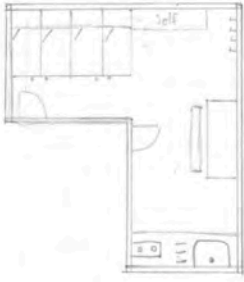


Problem: No extra warmth
Fix: By adding a fireplace inside it provides extra warmth for people while they are out of their sleeping bag. This helps everyone stay warm and happy.



Also going to raise the deck a little bit to allow more of an "excluded from the bush" feel and possibly a better view. This modification lets the user have a more pleasant experience.

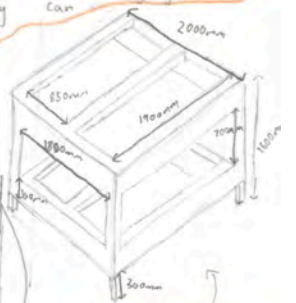
Original floor plan
1:100 scale



Development of concept 4
Final choice
of design
interior

Moving table to other side
so that people can look
out to the deck and
a better view than before
to make people
happy and have a
more enjoyable time

Leaving a gap in the middle of the
bunks for more space and putting a self
and some hooks for wet jackets and bags
which lets people have dry gear and
enjoy their stay.



Beds at just under a single
bed size, with a divider
between so people can
have private time in
a reasonably sized bed.

Kitchen bench at 900mm
to utilise the light from
the window and at hip
height so people comfortably
cook, eat, and clean on it.

Final floor Plan
1:50 scale



Adding 2 doors by the beds and
by the kitchen so if people are
coming in late they can use
the kitchen door so they don't
wake anyone. Also if people
make food they can walk quickly
onto the deck to eat instead
of walking all the way around
with their food.

Adding a fire place
with wood storage beside.
conveniently placed next to kitchen and dining
area so people can stay warm while out
of their sleeping bags.



x2

O = Considerations
of people

Considerations of People

Final design -

Exterior

Chimney to allow a fire place side
to keep people warm while out of
their sleeping bags to improve their
overall experience.

Window above bunks to
catch morning sun when
rising in the East
to allow tramps to wake
in the warm sun.

Window in kitchen, facing the
west to get evening sun into dining
room and kitchen so that
people can enjoy nice, warm sun
while enjoying a meal or just
hanging up.

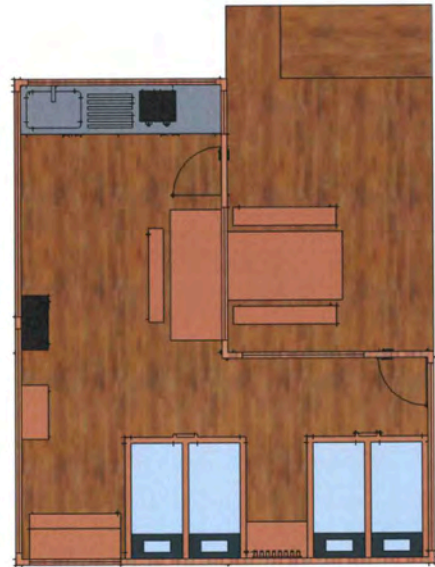
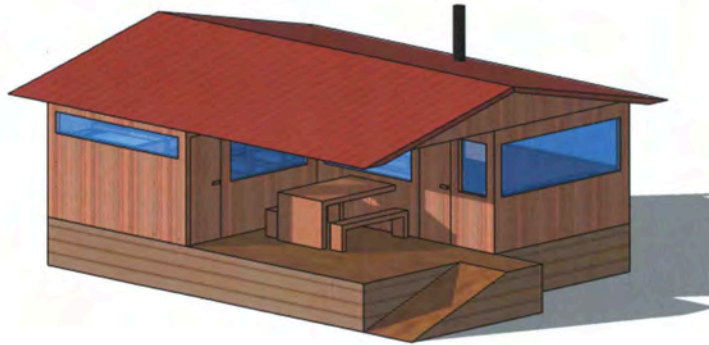
Corrugated iron on the roof to
allow for easy water run-off.
Also to be durable so people
don't need to replace it to maintain
very often.



A ramp to allow tent
tramps and disabled to
have an easier way into
the hut that is less
tiring.

A deck placed in between the
kitchen and the bunks with doors
near both to allow people to
come in late and not disturb
sleeping people.





Final Design of Tramping Hut

Considerations of People: The window on the left is positioned just above the beds and is conveniently placed on the East side of the building so it can catch the early morning sun and so the kitchen and dining can have the night sun. This works because it allows people to get to sleep in dark and to wake up in the morning in nice sun and it also lets people have the evening sun while they cook or dine.

Merit

Subject: Design and Visual Communication

Standard: 92002

Total score: 05

Marker commentary

This submission's main visual communication technique is freehand 2D and 3D sketches. The final design is presented using a digitally produced model.

Multiple design ideas are explored and are related to the context of a tramping hut and show people interacting in the space.

The chosen design shows progression by adding features that are connected to the way people use the design. The connections to people and the context are mostly made clear through the notes rather than the visual communication.

To move this submission towards an Excellence, the progression of the design and the improvement of the user experience needs to be shown more clearly using visual techniques rather than relying on written notes. The features and details of the design needed to be communicated visually to effectively show the user experience and the context.